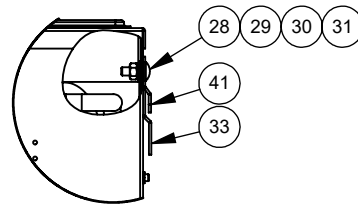
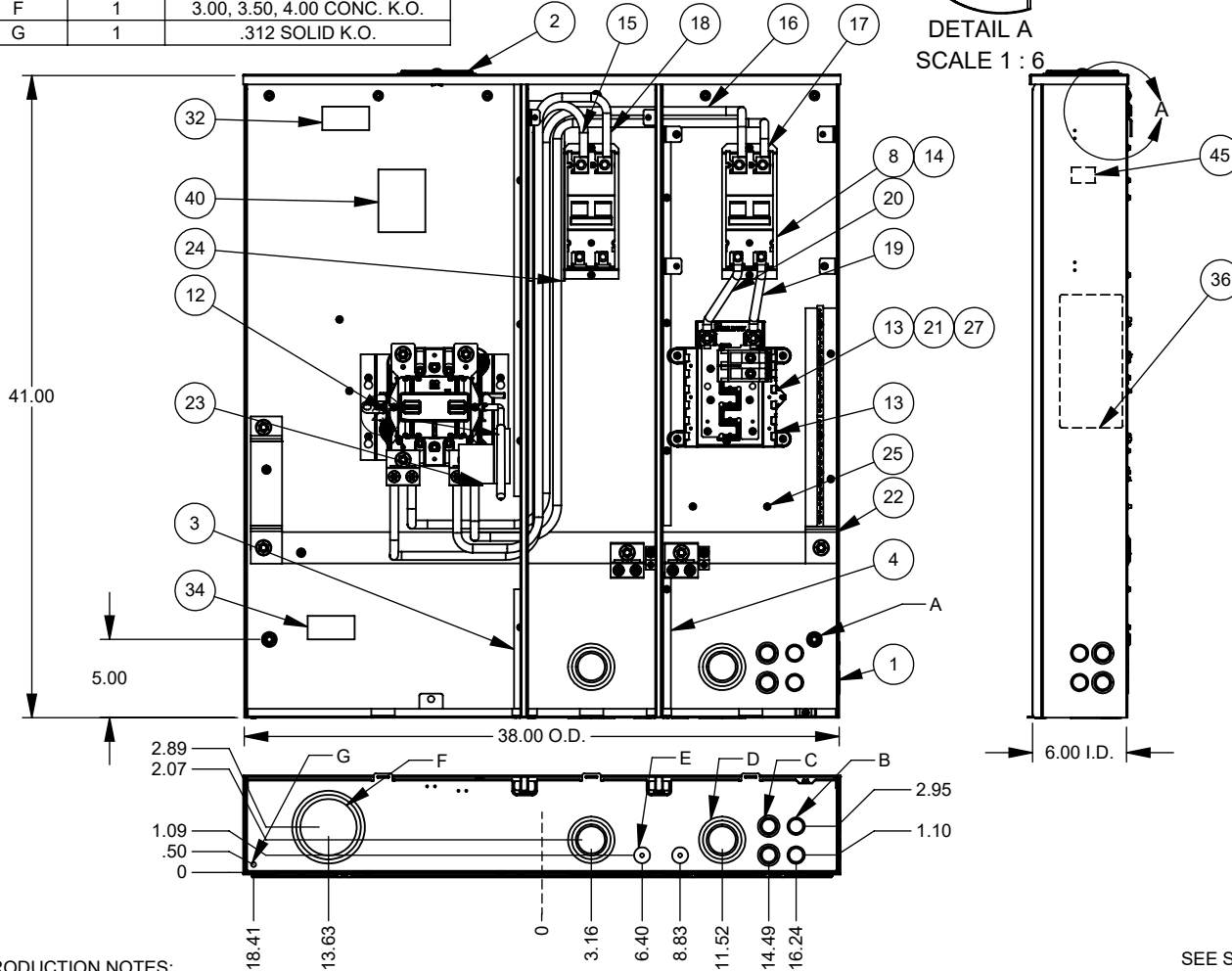


FEATURE TABLE		
ITEM	QTY.	DESCRIPTION
A	2	STD. MOUNTING EMBOSS
B	6	.50, .75 CONC. K.O.
C	6	.50, .75, 1.00 CONC. K.O.
D	4	1.25, 1.50, 2.00, 2.50 CONC. K.O.
E	2	.25, .50 CONC. K.O.
F	1	3.00, 3.50, 4.00 CONC. K.O.
G	1	.312 SOLID K.O.



DETAIL A  
SCALE 1:6



ITEM	QTY.	PART NUMBER	DESCRIPTION
1	1	1222636	SHELL WELDMENT
2	1	1001186	LARGE CLOSING PLATE
3	1	1225022	BARRIER WELDMENT
4	1	1225019	BARRIER WELDMENT
5	1	1221497	LEFT FRONT ASSEMBLY
6	1	1225046	MIDDLE FRONT ASSY
7	1	1225043	RIGHT FRONT ASSY
8	2	1220509	RISER
9	1	1229357	RIGHT DEADFRONT
10	1	1224339	LEFT DEADFRONT
11	1	1225114	DISTRIBUTION PANEL COVER
12	1	1224197	BRIDGE & BLOCK ASSY
13	1	1122660	INTERIOR ASSY
14	2	1047697	C/B 2P 200A 120/240 22K
15	1	1222730	50.0" 3/0 BLK COPPER WIRE
16	1	1222728	56.5" 3/0- BLK COPPER WIRE
17	1	1222732	55.0" 3/0- BLK COPPER WIRE
18	1	1222733	46.0" 3/0 BLK COPPER WIRE
19	1	1225025	7.5" 3/0 COPPER WIRE
20	1	1225066	8.0" 3/0 COPPER WIRE
21	1	1047008	SUB-FEED LUG KIT
22	1	1225003	NEUTRAL/GROUND BUS ASSY
23	1	1223706	INSULATOR
24	1	1223950	INSULATOR
25	20	1000183	SCREW 12-24 x 5/16
26	7	1001290	SCREW, 10-32 X 5/16
27	4	1156422	SCREW 12-24 x 1/2
28	6	1047010	CARR. BOLT 1/4-20X3/4 SS
29	6	1002131	1/4" FLAT SAE WASHER SS
30	6	1025009	WASHER 1/4" SPLIT LOCK
31	6	1025026	NUT, 1/4-20 HEX
32	1	1000044	LABEL, HUB OPENING
33	1	1225178	MOUNTING ANGLE
34	1	1025203	LABEL, KEEP CLEAR
35	2	1216354	LABEL EMERGENCY DISCONNECT
36	1	1233390	LABEL, RATING
37	3	1000064	LABEL, DANGER
38	2	1025027	LABEL, ON/OFF TRIP
39	2	1025109	LABEL, CIRCUIT BREAKER
40	1	1001272	LABEL, BY-PASS INSTR.
41	1	1229000	MOUNTING ANGLE
42	1	1225214	MOUNTING ANGLE BAG ASSEMBLY (NOT SHOWN)
43	1	1000158	PAD WIREMAN, 8.37 x 7.50
44	1	1225179	CARTON 1-PER (NOT SHOWN)
45	1	1047140	LABEL, U/L PANELBOARDS

PRODUCTION NOTES:

- PLACE AND TAPE BAG ASSEMBLY #1225214 INSIDE UNIT.
- TAPE MOUNTING ANGLE (33) IN PLACE AS SHOWN

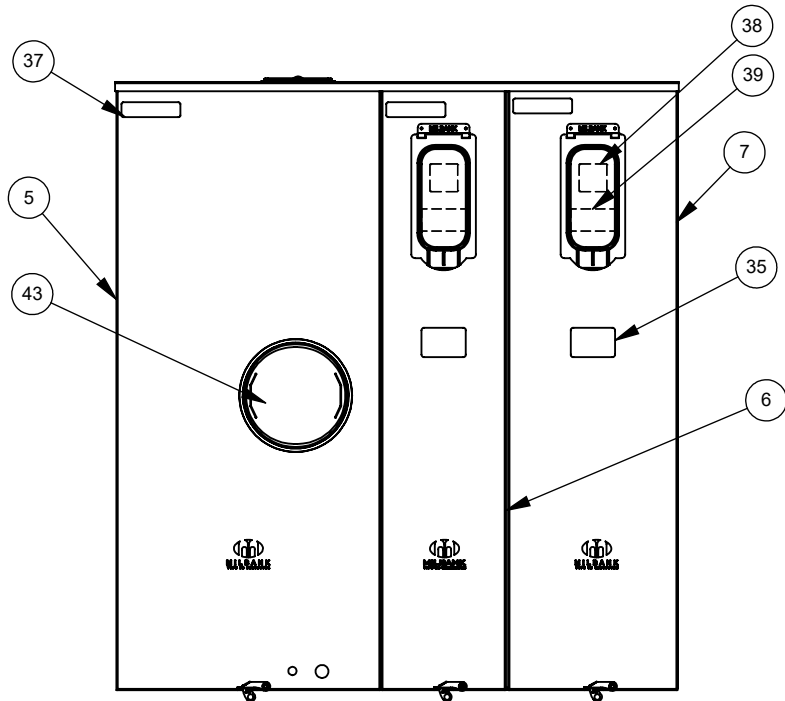
SALES NOTES:

- FOR BYPASS JUMPER KIT ORDER CATALOG KIT #K8180
- FOR FIELD INSTALLED FIFTH TERMINAL ASSY. ORDER CATALOG KIT #K3865
- LEVER SUPPLIES CLAMPING ACTION ON METER SPADES AND ALSO OPERATES BYPASS DEVICE
- UNIT IS SUPPLIED WITH 3/8-16 HEX HEAD NUTS WITH BELLEVILLE WASHERS FOR
  - SINGLE LUG CONNECTOR KIT ORDER #K1540L
  - TWIN LUG CONNECTOR KIT ORDER #K1350L

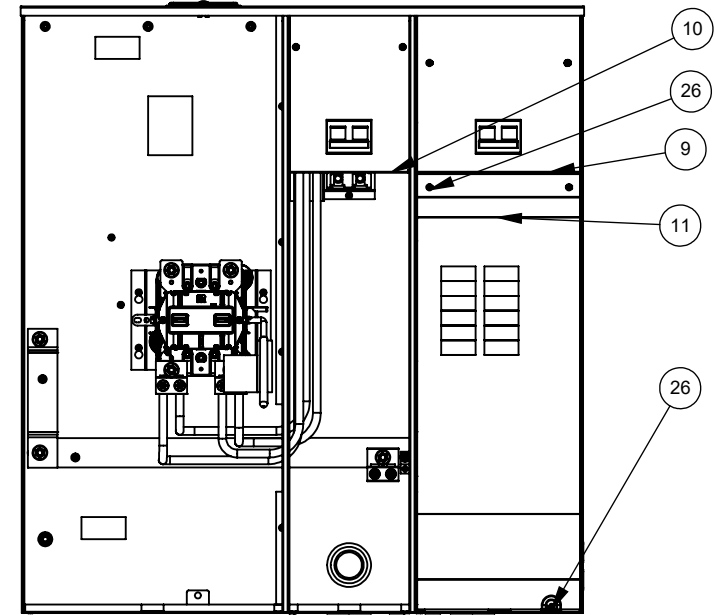
SEE SHEET 2 FOR ADDITIONAL VIEWS  
SEE SHEET 3 FOR WIRING DIAGRAM

REV.	DATE	DESCRIPTION	ECO No.	BY
**	9/29/20	NEW	046383	SO

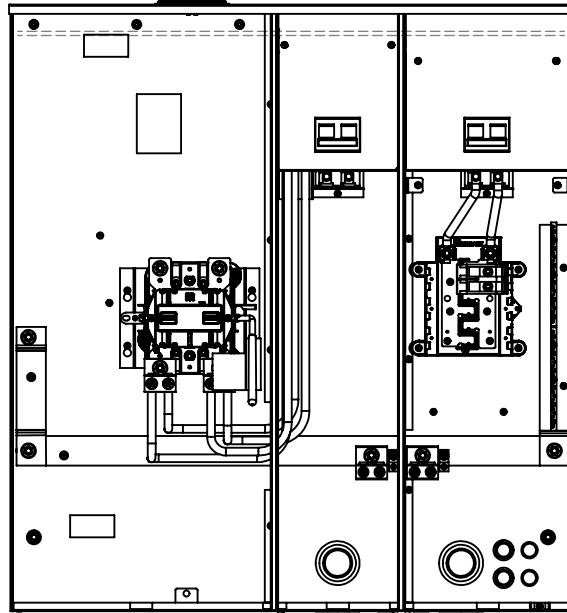
Material: 14 GA. GALV. STEEL		<p>KANSAS CITY, MO USA</p>
Shear/Die No.:	~	
Finish:	MILBANK LIGHT GRAY	Title: 320A SIDE-BY-SIDE OH/UG H.D. 3/8 STUD, METER MAIN 4 OR 5 TERM
Part Wt.:	144 LBS. EA.	
Square Inches:	~	Catalog No.: U6601-X-2/200-MLK-BL
Tolerances:	Unless Specified Otherwise X.X ±.1 X.XX ±.03 X.XXX ±.015 X" ±2"	
Scale:	NTS	Third Angle 
Checked By:		
Approved By:		Customer:
Drawn By:	SO	Drawing No.:
		Date:
		Sheet:



OUTER FRONTS SHOWN



OUTER FRONTS NOT SHOWN  
DEAD FRONTS SHOWN



DEAD FRONTS SHOWN  
PANEL COVER NOT SHOWN


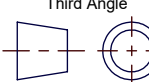
PRODUCTION NOTES:

1. PLACE AND TAPE BAG ASSEMBLY #1225214 INSIDE UNIT.
2. TAPE MOUNTING ANGLE (33) IN PLACE AS SHOWN

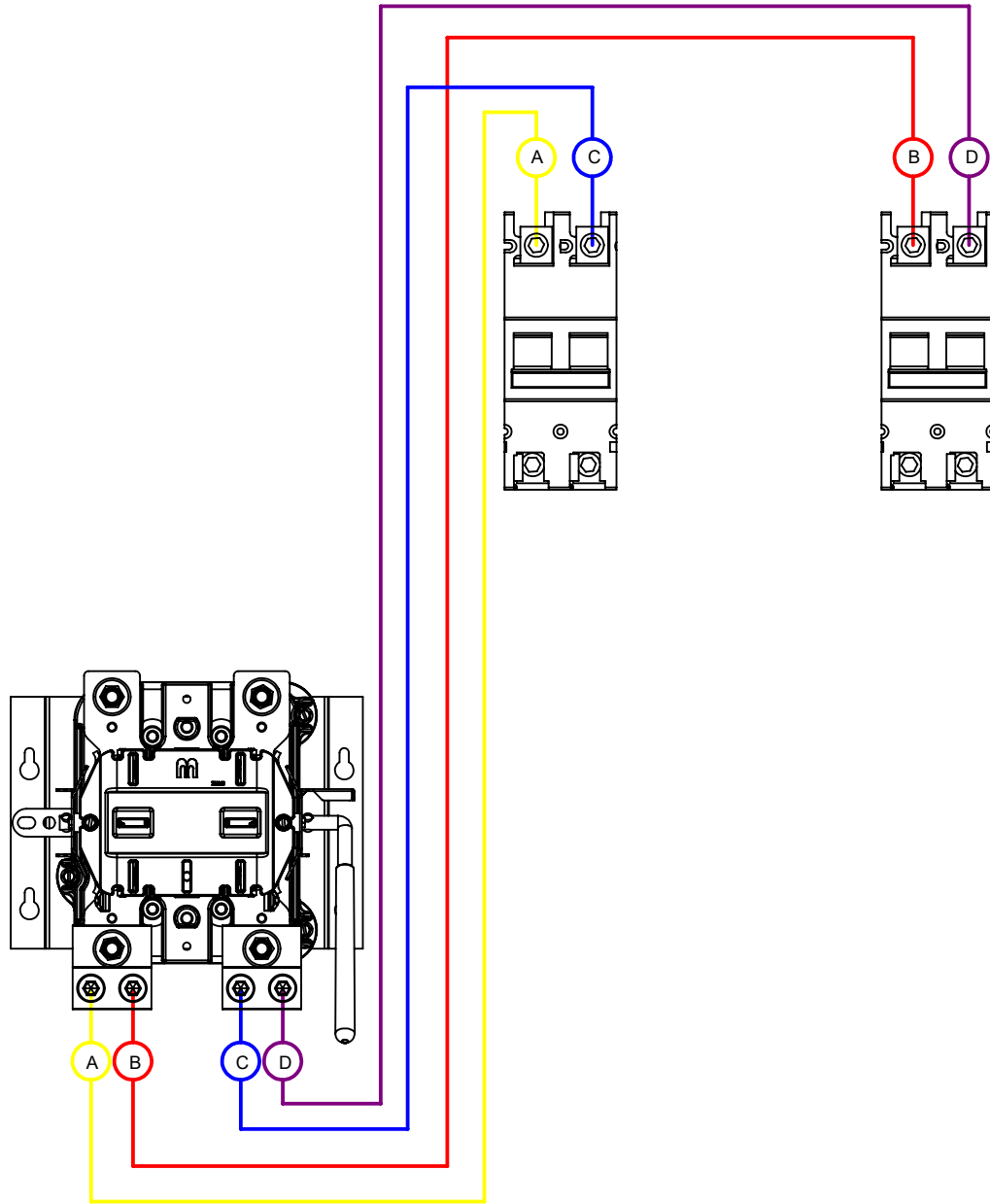
SALES NOTES:

1. FOR BYPASS JUMPER KIT ORDER CATALOG KIT #K8180
2. FOR FIELD INSTALLED FIFTH TERMINAL ASSY. ORDER CATALOG KIT #K3865
3. LEVER SUPPLIES CLAMPING ACTION ON METER SPADES AND ALSO OPERATES BYPASS DEVICE
4. UNIT IS SUPPLIED WITH 3/8-16 HEX HEAD NUTS WITH BELLEVILLE WASHERS FOR
  1. SINGLE LUG CONNECTOR KIT ORDER #K1540L
  2. TWIN LUG CONNECTOR KIT ORDER #K1350L

REV.	DATE	DESCRIPTION	ECO No.	BY
**	9/29/20	NEW	046383	SO

Material:	14 GA. GALV. STEEL	 <p>KANSAS CITY, MO USA</p>	
Shear/Die No.:	~		
Finish:	MILBANK LIGHT GRAY		
Part Wt.:	144 LBS. EA.		
Square Inches:	~	Title:	320A SIDE-BY-SIDE OH/UG H.D. 3/8 STUD, METER MAIN 4 OR 5 TERM
Tolerances: Unless Specified Otherwise	X.X ±.1 X.XX ±.03 X.XXX ±.015 X" ±2"	Catalog No.:	U6601-X-2/200-MLK-BL
Scale:	NTS	Customer:	
Third Angle		Drawing No.:	1224366
Checked By:		Date:	09-24-20
Approved By:		Sheet:	2 of 3

**INSTALL WIRES RIGHT TO LEFT  
STARTING AT BREAKERS**



**PRODUCTION NOTES:**


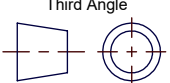
1. PLACE AND TAPE BAG ASSEMBLY #1225214 INSIDE UNIT.
2. TAPE MOUNTING ANGLE (33) IN PLACE AS SHOWN

**SALES NOTES:**

1. FOR BYPASS JUMPER KIT ORDER CATALOG KIT #K8180
2. FOR FIELD INSTALLED FIFTH TERMINAL ASSY. ORDER CATALOG KIT #K3865
3. LEVER SUPPLIES CLAMPING ACTION ON METER SPADES AND ALSO OPERATES BYPASS DEVICE
4. UNIT IS SUPPLIED WITH 3/8-16 HEX HEAD NUTS WITH BELLEVILLE WASHERS FOR
  1. SINGLE LUG CONNECTOR KIT ORDER #K1540L
  2. TWIN LUG CONNECTOR KIT ORDER #K1350L

LETTER	PART NO.	WIRE COLOR
A	1222730	YELLOW
B	1222728	RED
C	1222733	BLUE
D	1222732	PURPLE

WIRES ENDS TO BE MARKED WITH PAINT PEN DURING FINAL ASSEMBLY.

Material:	14 GA. GALV. STEEL	 <p><b>MILBANK</b> ENERGY AT WORK KANSAS CITY, MO USA</p>	
Shear/Die No.:	~		
Finish:	MILBANK LIGHT GRAY		
Part Wt.:	144 LBS. EA.		
Square Inches:	~	Title:	320A SIDE-BY-SIDE OH/UG H.D. 3/8" STUD, METER MAIN 4 OR 5 TERM
Tolerances: Unless Specified Otherwise X.X ±.1 X.XX ±.03 X.XXX ±.015 X" ±2"		Catalog No.:	U6601-X-2/200-MLK-BL
Scale: NTS Checked By:		Customer:	
Third Angle 		Drawing No.:	1224366
Drawn By:	SO	Date:	09-24-20
Approved By:		Sheet:	3 of 3

REV.	DATE	DESCRIPTION	ECO No.	BY
**	9/29/20	NEW	046383	SO