

ENGINEERING DATA



Model: FCMC

Fresh Command Multi-Family Control

Part No. 602612300



DESCRIPTION

The Fresh Command Multi-Family Control (FCMC) is designed to meet ASHRAE 62.2 ventilation requirements and energy codes. With its innovative features and userfriendly design, this control unit ensures optimal ventilation and occupant comfort while reducing callbacks for comfort issues.

ITEMS INCLUDED IN KIT

- Fresh Command Multi-Family Control (FCMC)
- Mounting Hole Template
- Instruction Manual

SHIPPING INFORMATION

Dimensions 5-13/16" x 5" x 2-1/4"
Weight 2 lbs

FCMC FEATURES

- Complies to ASHRAE 62.2 with built-in calculations for easy setup and installation
- Auto-senses 8 key factors at startup to balance temperature and humidity regardless of climate zone
- Built-in temperature and humidity sensors with no additional wiring needed
- Quick-Start Test feature for an immediate test cycle
- Fast Click, lock cover deters tenant or renter interference
- Seeks to ventilate with a heating or cooling call for optimal comfort and efficiency
- One dial to adjust intermittent ventilation
- On/off switch with easy access that does not require cover removal

FCMC PRODUCT SPECIFICATIONS

Power Requirements (Class 2 Appliance)

Power	
Input Voltage	16-32 VAC
Full Load Power	1.28W 27.4VAC
Idle Power	270mW @ 27.4 VAC
Wiring Requirements	18-22 AWG, 24 VAC (Min)
Operating Temperature Range	10°F to 160°F
Operating Humidity Range	5 to 95% RH (non-condensing)

Outputs	
Fan Output GF (Maximum Load Current)	8A inductive @30VAC
Vent (V,V) (Maximum Load Current)	8A inductive @30VAC, or 30ADC



Field Controls
2630 Airport Road
Kinston, NC 28504

252 522-3031
Fax: 1 (800) 367-7942

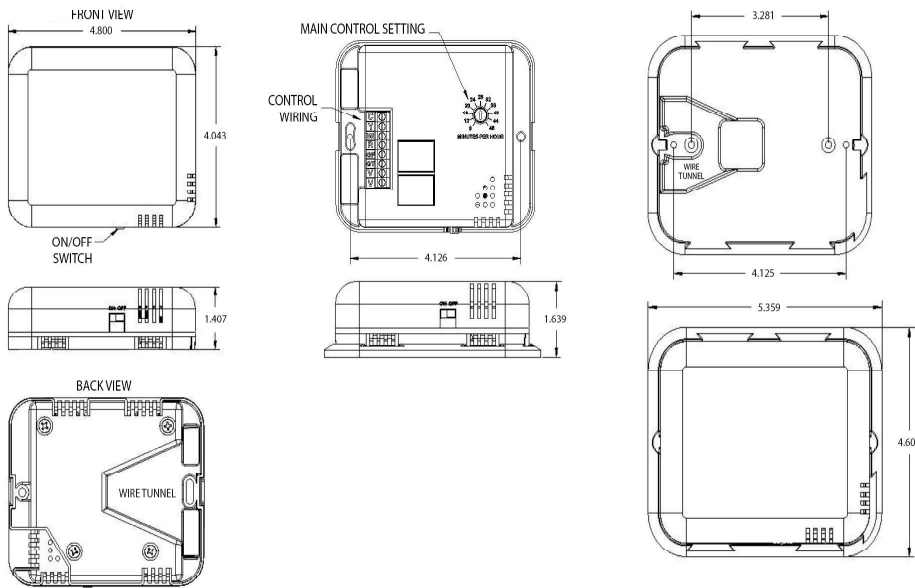
Visit us at: www.fieldcontrols.com



Field Controls LLC reserves the right to modify a product, without prior notice, whether in design, color or specifications, in order to offer at all times a quality product that is highly competitive. Please consult your national and local building codes to find out whether the installation of electrical products requires the services of a certified technician or electrician. Field Controls is a registered Trademark used under license by Field Controls LLC. All rights reserved.

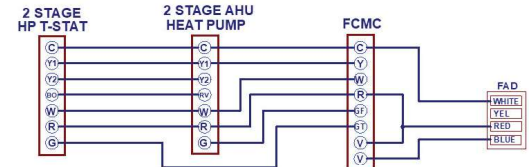
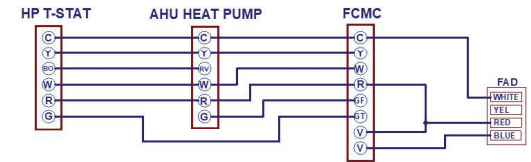
ENGINEERING DATA FCMC

DIMENSIONAL DATA

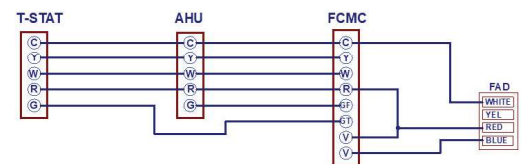


FAD WIRING

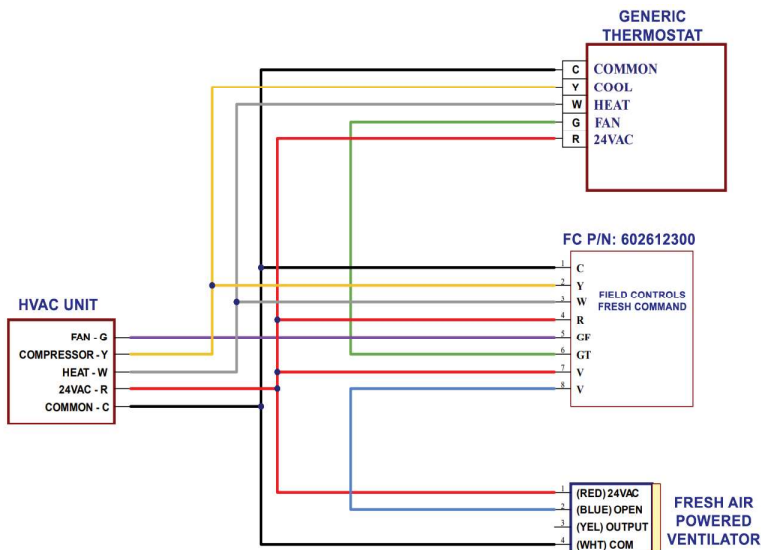
GENERIC HEAT PUMP WIRE DIAGRAM



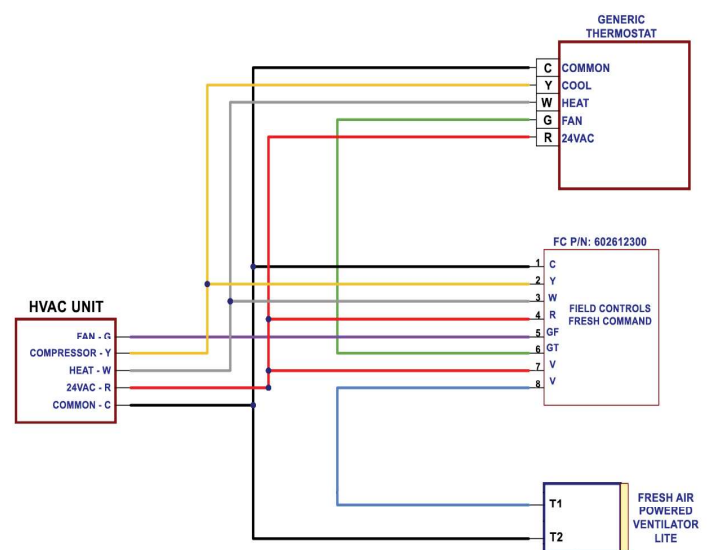
CONVENTIONAL HEAT/COOL WIRE DIAGRAM



WIRING DIAGRAM OF TYPICAL FAPV INSTALLATION



WIRING DIAGRAM OF FAPV-L INSTALLATION



Field Controls
2630 Airport Road
Kinston, NC 28504
252 522-3031
Fax: 1 (800) 367-7942



Visit us at: www.fieldcontrols.com

PROJECT INFORMATION

Quoted by:	Date:
Project:	Remarks:
Quantity:	
Model:	
Site:	
Architect:	
Engineer:	
Contractor:	