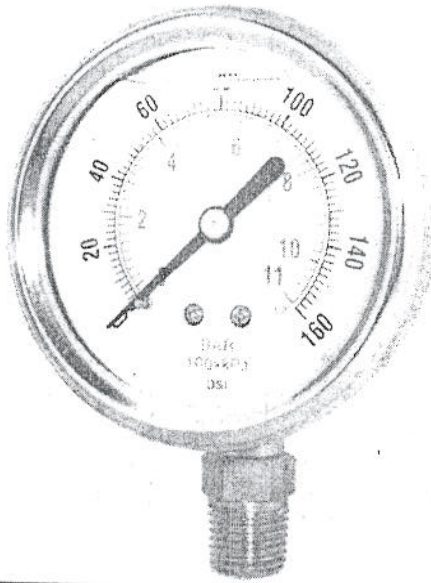


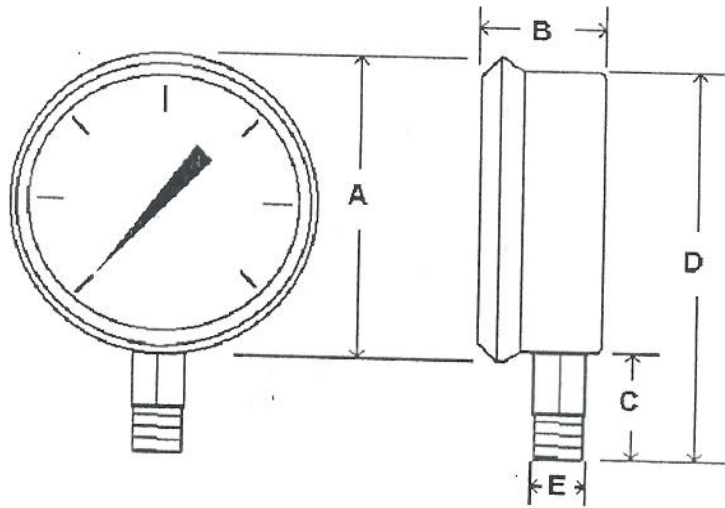
4" Part #

80-463



2 1/2" part #

- 80-061
- 80-062
- 80-063
- 80-064
- 80-065
- 80-066
- 80-067
- 80-068
- 80-069
- 80-100
- 80-101
- 80-102
- 80-103
- 80-104
- 80-080



		A	B	C	D	E
2 1/2" Dial	In	2.80	1.28	1.07	3.55	1/4"
	MM	71	33	27	90	NPT
4" Dial	In	4.17	1.73	1.34	5.12	1/4"
	MM	106	44	34	130	NPT

\*Dimensions subject to change