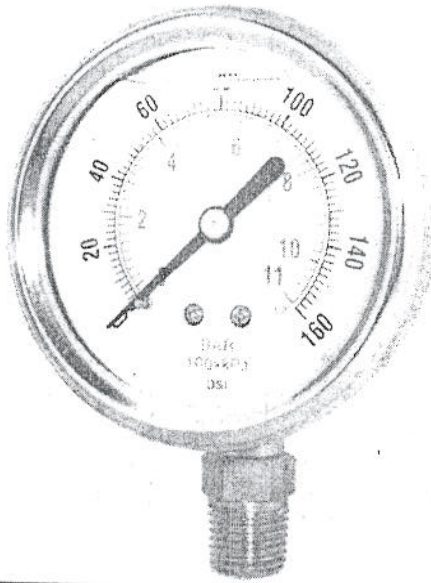


4" Part #

80-463



2 1/2" part #

80-061

80-062

80-063

80-064

80-065

80-066

80-067

80-068

80-069

80-100

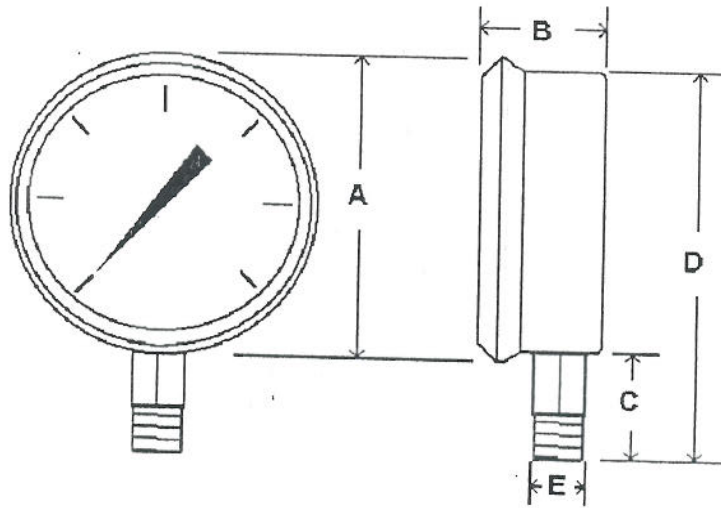
80-101

80-102

80-103

80-104

80-080



		A	B	C	D	E
2 1/2" Dial	In	2.80	1.28	1.07	3.55	1/4"
	MM	71	33	27	90	NPT
4" Dial	In	4.17	1.73	1.34	5.12	1/4"
	MM	106	44	34	130	NPT

*Dimensions subject to change