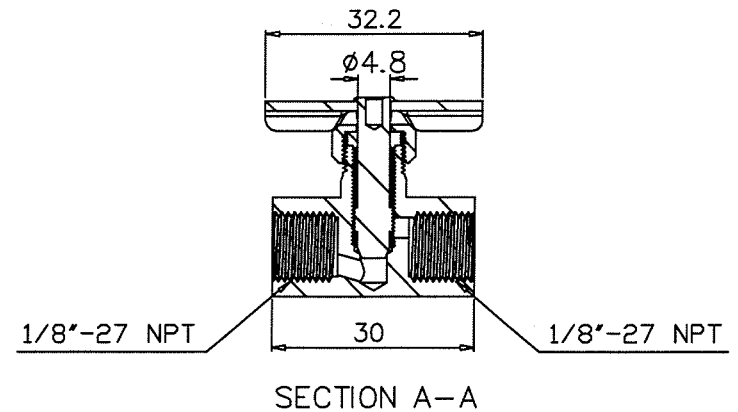
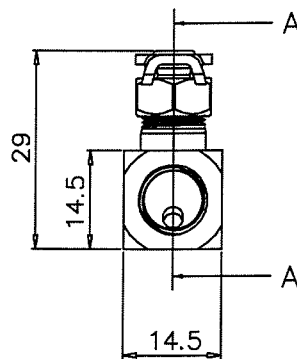
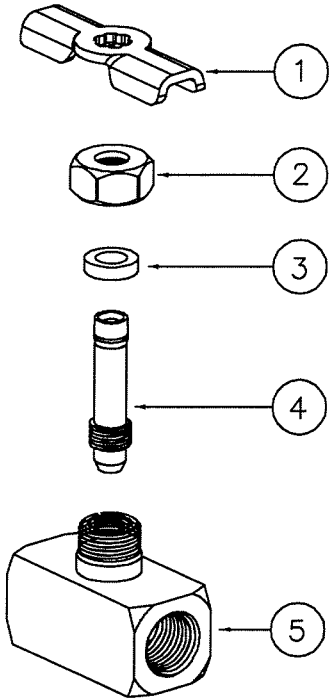


NO.	PART NO.	PART TITLE	MATERIAL	REAL Q'TY	WETTED AREA Q'TY	AREA(IN) ² /PER UNIT	
1	1605	HANDLE	STEEL YZP	1			
2	1710	NUT	BRASS (3604)	1			
3	1209	SEAT	NBR (SN-719F)	1	1	0.091	
4	1404	STEM	BRASS (C3601)	1	1	0.345	
5	1186	BODY	BRASS C36000	1	1	0.882	
				1/8" FIP X 1/8" FIP		TOTAL AREA:	1.318



<p>"This drawing contains proprietary and confidential information of Midland Metal Mfg., Co. and shall not be reproduced, copied, loaned, or submitted to outside parties for examination without our consent"</p>				Date:		UNIT:	INCH	Material:	
				Drawn:		Scale:	1=1	Part Title:	1/8 fip x fip needle valve
4				Checked:		PROJECT		PART NO.	46055
3				Approved:				DWG. NO.	
2				MIDLAND METAL MFG. CO. KANSAS CITY, MO					
1									
NO.	PCA	Date	Revision	TOLERANCES ARE: DECIMALS. .X:±0.03 .XX:±0.01 .XXX:±0.005 ANGLES:±1° FRACTIONS ± 1/8					