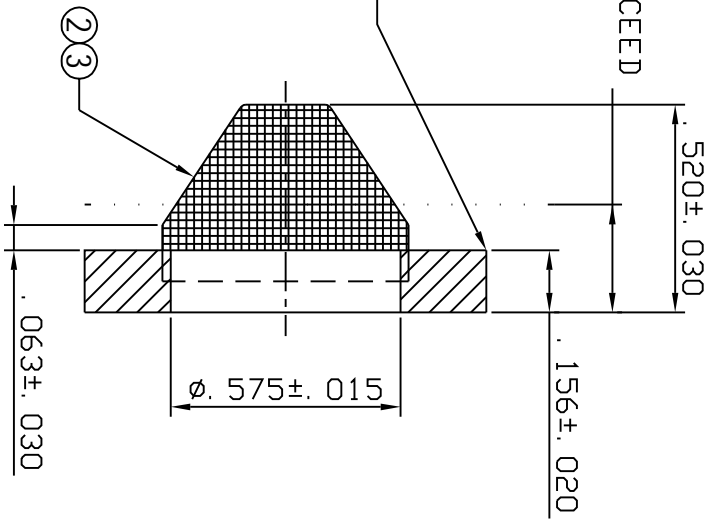
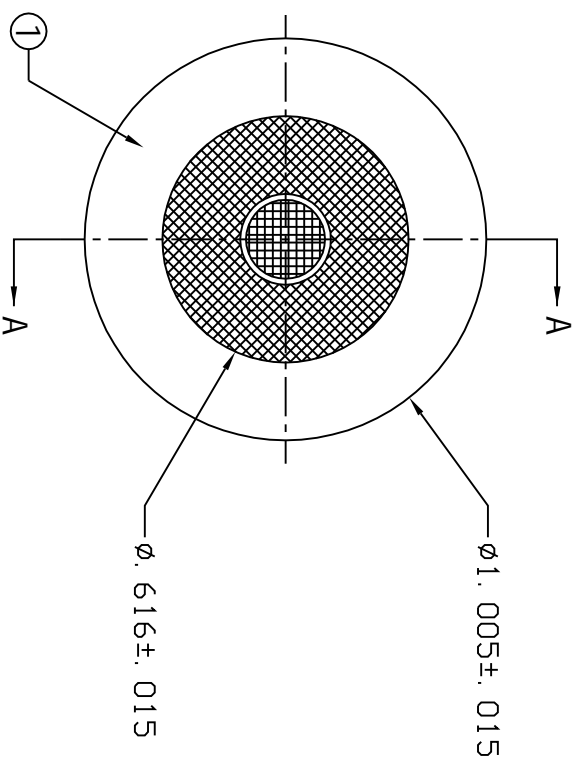


CAPILLARY NOT TO EXCEED  
 .270 FROM BASE  
 .520±.030  
 .156±.020

FLASH ON TOP OUTER  
 EDGE NOT TO EXCEED  
 .015 PROJECTION



SECTION A-A



NOTE: #16269 COIL STOCK IS MADE FROM  
 MAT'L #10159, 60\*50 .0065 STAINLESS.

"This drawing contains proprietary and confidential information of Midland Metal Mfg., Co. and shall not be reproduced, copied, loaned, or submitted to outside parties for examination without our consent"

4			TOLERANCES ARE: DECIMALS
3			.X± 0.03
2			.XX± 0.01
1		A	.XXX± 0.005
NO.	PCA	Date	Revision

Date:	11/20/03	UNIT:	INCH
Drawn:	Rita Sue	Scale:	2=1
Checked:		PROJECT	
Approved:			

Material:	
Part Title:	FINE MESH FILTER WASHER
Part No.:	30180F
DWG. No.:	

3	10372	COMPONENT SCREEN
2	16269	COIL STOCK
1	10027	FDA BLACK PVC 70 DURO A
ITEM	PART NUMBER	DESCRIPTION

MIDLAND METAL MFG. CO.  
 KANSAS CITY, MO