

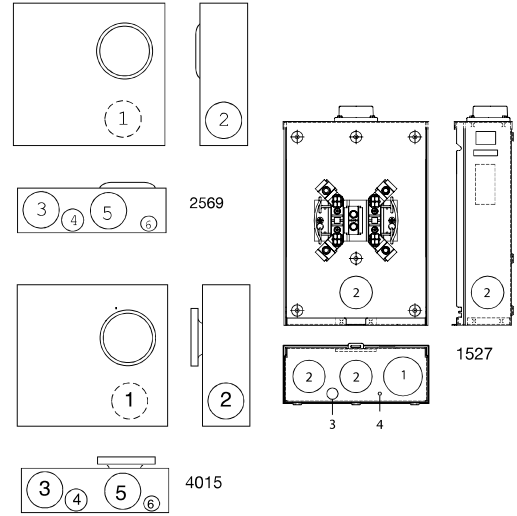
200 AMP – 4 & 5 TERMINAL – SINGLE POSITION – RINGLESS / RING TYPE – 600 VAC



U2569-0



U4015-0



200 AMP – SINGLE POSITION – 4 TERMINAL – RINGLESS

SERVICE	CATALOG NUMBER	HUB	CONNECTORS		DIMENSIONS			CONCENTRIC KO'S					
			CU/AL		D"	W"	H"	1	2	3	4	5	6
UG	U1527-XL	C.P.	#2-350		4 1/8	11	15 1/2	2	2	2	2 1/2	1/4, 1/2	1/4

FIFTH TERMINAL: For field mounted fifth terminal order catalog number **K5T** to fit into square opening at the 9 o'clock position.
HUBS: For proper hub selection see the hub suffix chart on accessory page.
CONNECTORS: Extruded aluminum connectors are tin plated.

200 AMP – SINGLE POSITION – 4 TERMINAL – SIDE WIREWAY – RINGLESS

SERVICE	CATALOG NUMBER	HUB	CONNECTORS CU/AL		DIMENSIONS			CONCENTRIC KO'S					
			LINE	LOAD	D"	W"	H"	1	2	3	4	5	6
UG	U2569-0	BLANK	3/8-16 STUDS	#2-350	4 1/2	13	19	2 1/2	2 1/2	3	1 1/2	2 1/2	1/4, 1/2

200 AMP – SINGLE POSITION – 4 TERMINAL – RING TYPE

SERVICE	CATALOG NUMBER	HUB	CONNECTORS		DIMENSIONS			CONCENTRIC KO'S					
			CU/AL		D"	W"	H"	1	2	3	4	5	6
UG	U4015-0	BLANK	#6-350		6	14	16 1/2	2 1/2	2 1/2	3	1 1/2	2 1/2	1/4, 1/2

FIFTH TERMINAL: For field mounted fifth terminal order catalog number **K5T** to fit into square opening at the 9 o'clock position.
HUBS: For proper hub selection see the hub suffix chart on the accessory page.
CONNECTORS: Extruded aluminum connectors are tin plated.
SEALING RINGS: The above ring type units are supplied with an **MR-4** screw type sealing ring as standard.

Utility requirements for this equipment may vary. Always consult the serving utility for their requirements before ordering or installing equipment in this catalog.

