

SINCE



1920

VERMONT GLOVE

RANDOLPH, VERMONT



FORMERLY GREEN MOUNTAIN GLOVE

HANDMADE IN RANDOLPH, VT SINCE 1920.

WE MAKE EXCEPTIONAL GLOVES FOR UTILITY PROFESSIONALS, BECAUSE YOUR HANDS ARE THE MOST IMPORTANT TOOL ON THE JOB.

Made out of supple goat leather, our gloves are designed to work as hard as you do. We are deeply reverent of our long heritage & history as a family-owned & operated company. We are stubborn as hell and committed to functional design and the highest quality materials and methods. We value social and environmental sustainability as much as we value hard work, and are madly committed to using natural, sustainable, renewable materials. We aspire to use our enterprise as a platform to advocate for environmental stewardship, economic equity and social responsibility.



A LEGACY OF INNOVATION

In 1920, German immigrant Richard Haupt took over a failing silk dress glove company in Randolph, VT. He quickly discovered that lineworkers needed a durable and safe glove to work on the powerlines that were rapidly being built across rural America. Haupt developed a glove of unparalleled quality & construction, and built a company around it that was passed down through 4 generations of Haupt.

Today, Vermont Glove continues the long tradition of forward-thinking ingenuity and quality craftsmanship that Haupt started nearly 100 years ago. Operating our factory in Randolph, VT on 100% renewable energy, we marry our extreme quality standards with an iron-clad environmental and social ethic. Every day since 1920, and for the next 100 years, we stitch like we give a shit, because your hands are the hardest working tool on the job.

THEY WORK WELL BECAUSE THEY'RE MADE RIGHT.

Actually Made In Vermont.

We Stitch Like We Give A Shit.

We Cut, Sew & Ship Every Glove.

Goat Leather For Performance.

Sewn by High Value Employees.

Powered by 100% Renewable Energy.



P1109G

OUR FLAGSHIP PROTECTOR

Our flagship high voltage leather protector is a workhorse, just like you. They keep your hands safe and dextrous through the highest voltage and the longest days.



PROTECTORS



P1109G

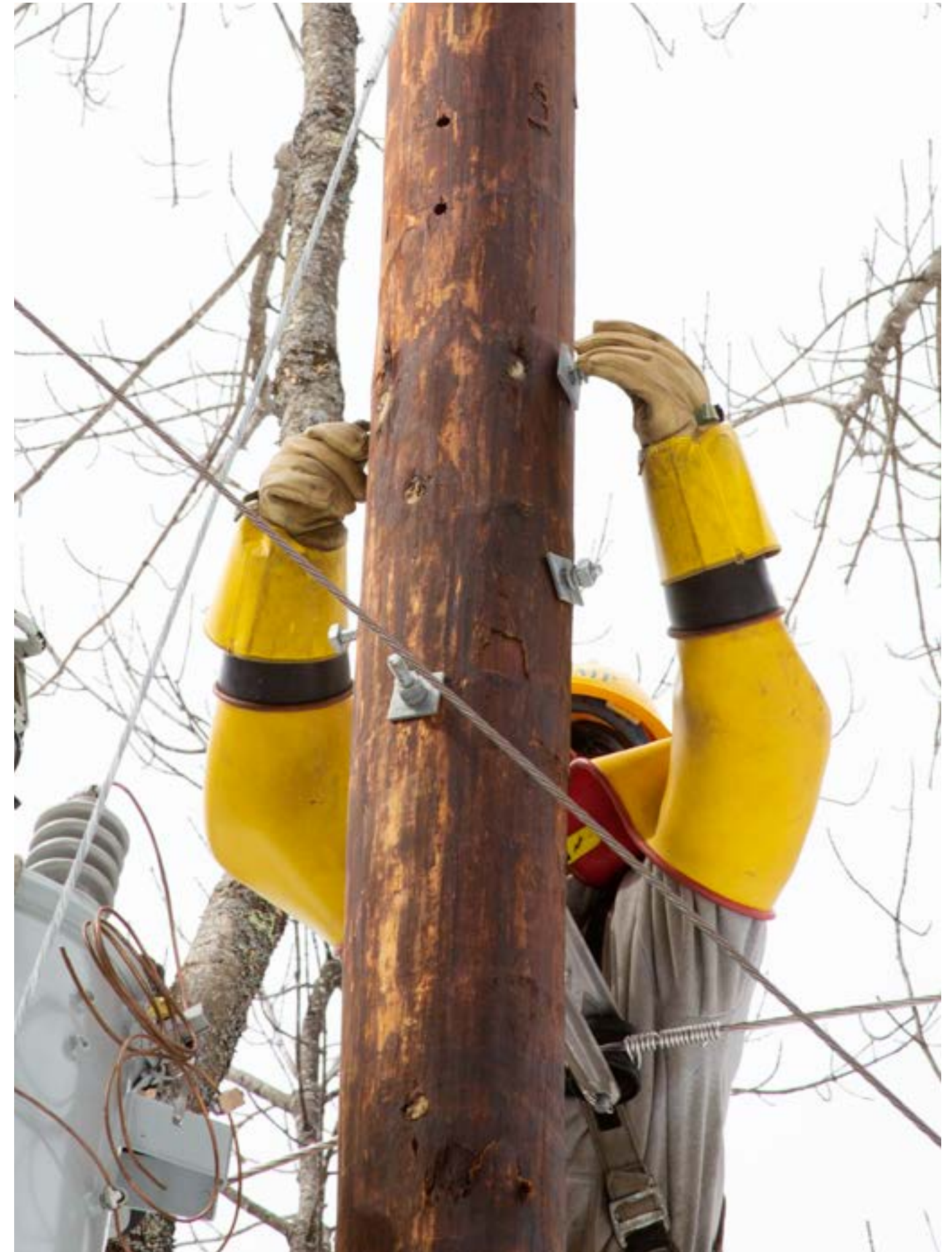
Flagship high voltage leather protector with exclusive thumb construction. Goat leather cover for 20,000 volt rubber.

- Available with 4, 5, 6, 7, and 8 inch yellow or orange vinyl cuffs.
- Available with straight, bell or contour cuffs.
- Standard with Strap and buckle.

M46

Low voltage protector. Goat leather cover for 10,000 volt rubber

- Available with no cuff or with 4, 5, 6, 7, and 8 inch yellow or orange vinyl cuffs.
- Available with straight, bell, or contour cuffs.



XL39G

OUR FLAGSHIP HEAVY DUTY WORK GLOVE WITH 2" CUFF





HEAVY DUTY

OUR HEAVY DUTY WORK GLOVES ARE MADE WITH 4oz.*
GOAT LEATHER FOR DURABILITY AND COMFORT



XL39G

Our flagship heavy duty work glove with leather cuff, available in 2" or 4"



XL58G

Our flagship heavy duty work glove with black vinyl cuff, available in 2" or 4"



T64

Heavy duty work glove. Available with 2" or 4" leather cuff.



CHOPPER'S MITT

Heavy duty work mitten.

HEAVY DUTY WORK GLOVE FEATURES



 MADE IN U.S.A.



 MADE IN U.S.A.

AG47RO

OUR GENERAL USE GLOVE WITH 2" CUFF



GENERAL USE

OUR GENERAL USE WORK GLOVES ARE MADE WITH 3oz.* GOAT LEATHER FOR DEXTERITY AND COMFORT



AG47R

Our flagship heavy duty work glove with leather cuff, available in 2" or 4"

AG47RO

Our flagship heavy duty work glove with leather cuff, available in 2" or 4"



OF76

One finger mitt. Available with 2" or 4" leather cuff.

WOOL LINER

For use in any of our gloves.

 MADE IN U.S.A.



 MADE IN U.S.A.



 **MADE IN U.S.A.**

GENERAL USE WORK GLOVE FEATURES



 **MADE IN U.S.A.**

HOW TO MEASURE YOUR HAND

OUR GLOVES COME IN 24 SIZES BECAUSE YOU CAN'T AFFORD TO DROP THAT WRENCH.



Pinch a tape measure between your thumb and pointer finger knuckle. Let the tape hang over the top of your knuckles.



Wrap the tape around the top of your knuckles, back around the inside of your palm, and to the beginning of the tape.



Your glove size is the number of inches this measurement reads.

SIZING CHART

SIZE	INCHES	CENTIMETERS
7 (XS)	6½" - 7½"	16.5 - 19
8 (S)	7½" - 8½"	19 - 21.5
9 (M)	8½" - 9½"	21.5 - 24
10 (L)	9½" - 10½"	24 - 26.7
11 (XL)	10½" - 11½"	26.7 - 29.5
12 (XXL)	11½" - 12½"	29.5 - 33

WHY GOAT LEATHER?

DURABILITY, DEXTERITY & LONGEVITY.

We have made our gloves out of goat leather since the beginning. It has the durability of cowhide, is supple & soft like deerskin, and will dry soft & malleable once wet. That means you don't have to work for 20 minutes before you can actually bend your fingers.

Goat hides are more challenging to work with, because they are smaller and more dynamic than cow hides. That means it's less profitable to work with, and requires more skilled workers to properly utilize the leather. But it works harder and lasts longer, so we've never been tempted to move away from goat leather. After all, we're motivated by performance and quality, not profit, so using goat leather is a no-brainer for us.

*Leather is a non-uniform product and thickness is subject to variation



 **MADE IN U.S.A.**

 **MADE IN U.S.A.**



ACTUALLY MADE IN RANDOLPH, VT

WE DON'T FOLLOW THE HERD. WE'VE BEEN HAND MAKING GLOVES
AT OUR OWN CUT & SEW OPERATION, IN THE U.S.A. SINCE 1920.



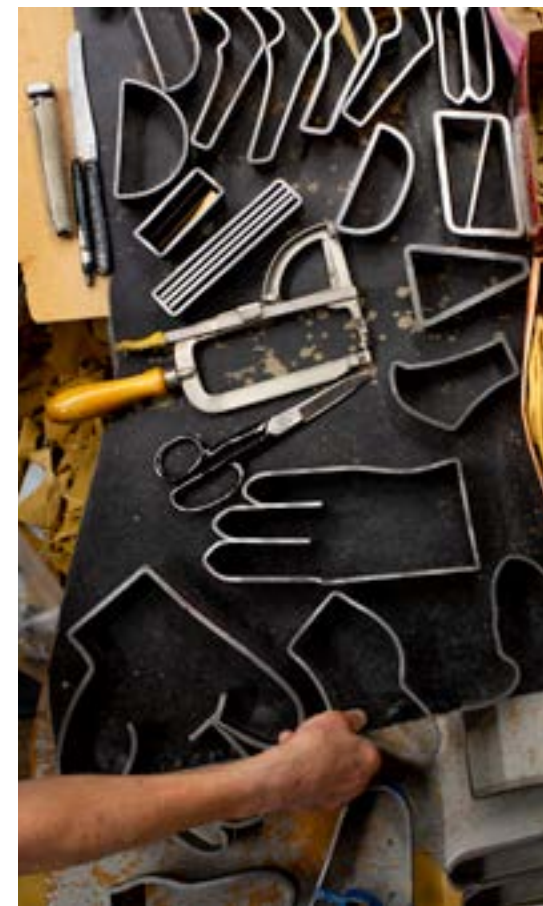
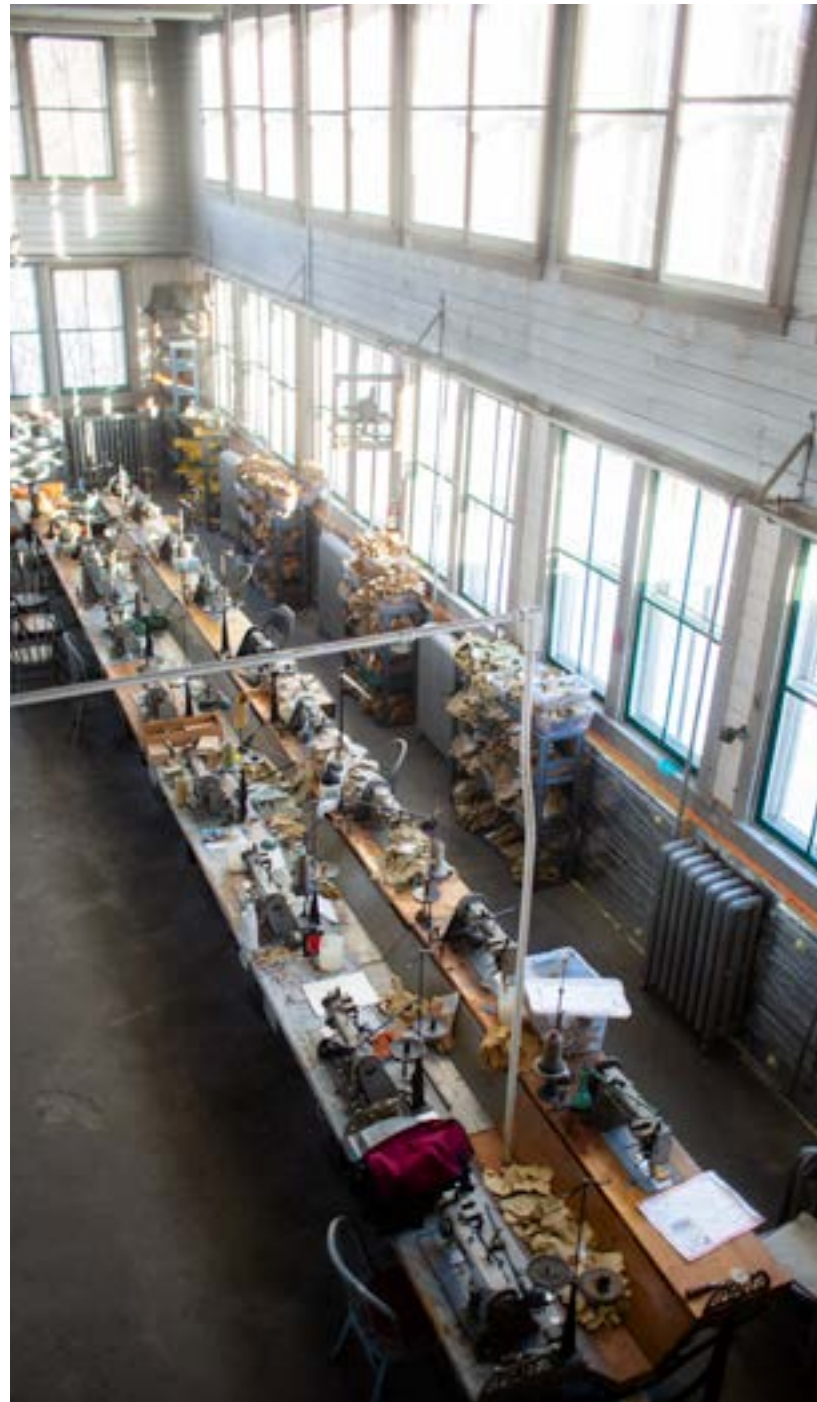
PURPOSE & RESPONSIBILITY

DRIVEN BY OUR MISSION, NOT OUR PROFITS.

We make gloves to protect people's lives and hands. We have a strong social and environmental ethic. By employing sustainable energy, renewable materials and sensible designs, we make better gloves with a lower carbon footprint. Gloves that will last, so you won't have to buy another pair for a really long time.

We are supporting our local, rural Vermont economy by building a thriving, profitable business and creating meaningful, equitable jobs.

We use our business as a tool to make a difference in our community, promote sustainability and environmental stewardship, and support the active lifestyles that are supported by hard-working, mission-driven gloves.





SINCE

1920

VERMONT GLOVE

RANDOLPH, VERMONT