

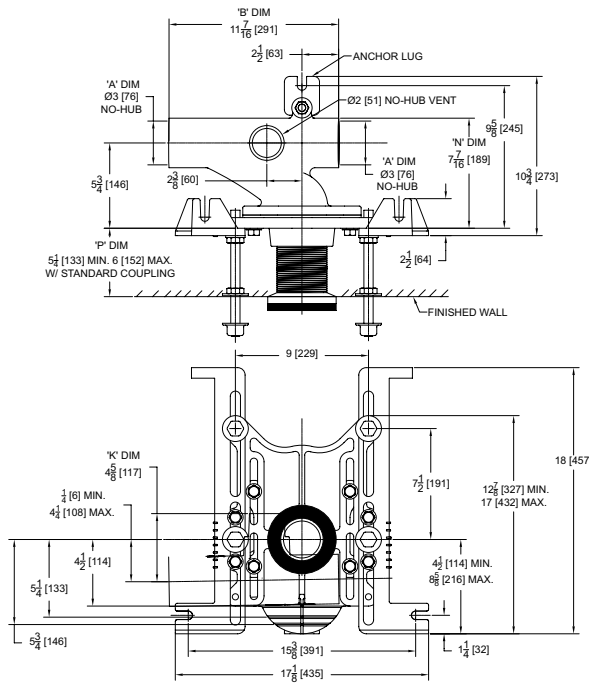


**Z1201-N\_3**  
**EZCARRY® ADJUSTABLE HORIZONTAL HIGH PERFORMANCE**  
**SIPHON JET NO-HUB WATER CLOSET CARRIER SYSTEM**

SPECIFICATION SHEET

TAG \_\_\_\_\_

Design and Dimensional Data (inches and [ mm ]) are Subject to Manufacturing Tolerances and Change Without Notice



Product Number	Approx. Wt. lbs [kg]
Z1201-NL3	55 [25]
Z1201-NR3	

**Note:**

1. Z coupling, Min. 'P' Dim Obtainable=2 [51]. ZQ coupling, Min. 'P' Dim. Obtainable=5 [127]. EZ-Set™ Coupling, Min. 'P' Dim. Obtainable=4-1/4 [108] or 2-1/16 [52] for 12 [305] NPT.
2. Feet bolted to floor using min. 1/2 [13] dia. anchors.
3. Rear anchor foot required for secure installation.

Z1201-NR3 Illustrated

**ENGINEERING SPECIFICATION: ZURN Z1201-N\_3**

EZCarry® horizontal siphon jet water closet carrier system with high performance waterway and 3" [76mm] no-hub connections. System includes Dura-Coated cast iron main fitting with hydro-mechanically optimized sweep and extended 2" [51mm] vent, adjustable gasketed faceplate, floor mounted pre-fab slotted foot supports with top anchoring pre-fab support base, heavy-duty 1/2" [13mm] rear anchor tie down, fixture bolts, trim, stud protectors, bonded "Neo-Seal" gasket, and corrosion resistant, adjustable 3" [76mm] dia. X 6" [152mm] coupling with integral test cap designed to increase flow velocity and line carry. EZCarry® system complies with the requirements of ASME A112.6.1M up to a 500 lbs [227 kg] static load rating.

**OPTIONS (Check/specify appropriate options)**

- \_\_\_ Z1201-NL3      3 [76] No-Hub Left Hand Inlet with Flow to Right  
 \_\_\_ Z1201-NR3      3 [76] No-Hub Right Hand Inlet with Flow to Left

**PREFIXES**

- \_\_\_ Z    D.C.C.I. System with Zurn ZZ Adjustable Coupling\*  
 \_\_\_ ZQ   D.C.C.I. System with NPT Faceplate, Non-Adjustable Coupling

**SUFFIXES**

- |                                                                                                                       |                                                                             |
|-----------------------------------------------------------------------------------------------------------------------|-----------------------------------------------------------------------------|
| ___ -A    Auxiliary Support Assembly<br>(For 'P' Dim. Greater than 18 [457])                                          | ___ -F    Floor Mounted, Back Outlet Fixture Support                        |
| ___ -CC   Corrosion Resistant Cast Iron Coupling<br>(2-1/4 [57] to 12 [305])                                          | ___ -G    Galvanized Cast Iron                                              |
| ___ -CE   EZ-Set™ Coupling (NPSM 6 [152] , 12 [305] or custom)<br>(NPT 12 [305] or custom)                            | ___ -M    Auxiliary Foot Support<br>(for 'P' Dim. 7 thru 18 [178 thru 457]) |
| ___ -CL   Custom Length Standard Coupling with Integral TestCap<br>(Specify Length 4, 8, 10, 12 [102, 203, 254, 305]) | ___ -RYK17   One Piece Unistrut Pre-Fab Foot                                |
| ___ -CS   2-1/4 [57] Polymer Coupling with Integral Test Cap                                                          | ___ -VP    Vandal-Proof Trim                                                |
|                                                                                                                       | ___ -X2    2 [51] Carrier Foot Extension Assembly                           |
|                                                                                                                       | ___ -X3    3 [76] Carrier Foot Extension Assembly                           |
|                                                                                                                       | ___ -45    Finishing Frame for Siphon Jet System                            |
|                                                                                                                       | ___ -50    Flush Valve Supply Support for Water Closets                     |

\* Regularly furnished unless otherwise specified.

**⚠ WARNING: Cancer and Reproductive Harm - [www.P65Warnings.ca.gov](http://www.P65Warnings.ca.gov)**

**⚠ ADVERTENCIA: Cáncer y daño reproductivo - [www.P65Warnings.ca.gov](http://www.P65Warnings.ca.gov)**

**⚠ AVERTISSEMENT: Cancer et effets néfastes sur la reproduction - [www.P65Warnings.ca.gov](http://www.P65Warnings.ca.gov)**

Zurn Industries, LLC | Specification Drainage Operation  
 1801 Pittsburgh Avenue, Erie, PA USA 16502, Ph. 855.663.9876

In Canada | Zurn Industries Limited  
 7900 Goreway Drive, Unit 10, Brampton, Ontario L6T 5W6, Ph. 877.892.5216

[www.zurn.com](http://www.zurn.com)

Rev.    N  
 Date:    01/02/23  
 C.N. No.    144897  
 Patent [zurn.com/patents](http://zurn.com/patents)  
 Prod. | Dwg. No. Z1201-N\_3