

Notice to Installer: Instructions must remain with installation.

Trusted. Tested. Tough.®

Product information presented here reflects conditions at time of publication. Consult factory regarding discrepancies or inconsistencies.



FM2573
1220
Supersedes
1116

MAIL TO: P.O. BOX 16347 • Louisville, KY 40256-0347
SHIP TO: 3649 Cane Run Road • Louisville, KY 40211-1961
TEL: (502) 778-2731 • 1 (800) 928-PUMP • FAX: (502) 774-3624

Visit our website:
zoellerpumps.com

MODEL 10-2614 APAK® ALARM SYSTEMS WITH AUXILLIARY CONTACTS WIRING INSTRUCTIONS



⚠ WARNING ELECTRICAL SHOCK HAZARD - Disconnect all power sources before servicing. Failure to do so could result in serious injury or death.

- 1) Remove the three screws from the back of the enclosure as shown in Fig. A.
- 2) Remove the back of the enclosure. Note the position of the power cord in the enclosure. The cord will need to be located in the same manner when the enclosure back is replaced.
- 3) Determine the location where the auxiliary contact wires will enter the housing. See Fig. B for recommended location. Before drilling the hole, loosen the circuit board mounting screw and remove the circuit board. See Fig. C.
- 4) At the selected location, drill a hole in the enclosure suitable for the strain relief that will be used (strain relief not included).
- 5) Install strain relief and reinstall the circuit board. Connect wires to the terminal block shown in Fig. C.
- 6) Markings on the circuit board show positions for Common (C), Normally Open (NO), and Normally Closed (NC).

- 7) Position the power cord into place as it was prior to removing the enclosure back as shown in Fig. C.
- 8) Reinstall the enclosure back and three screws.

⚠ CAUTION Do not over torque screws. Screw bosses may become stripped.
- 9) Note that while testing the installed product, the auxiliary alarm wired to the auxiliary contacts should activate in an alarm condition. The auxiliary alarm should also remain in alarm condition when the silence button is pushed.

Auxiliary Contacts Specifications

Voltage: 120 VAC
Current: 5 amps max. N/O
3 amps max. N/C

NOTE: This unit includes auxiliary contact option. Due to increased power consumption, if an alarm condition occurs while on battery backup power, this option will reduce the life of the battery.

Figure A

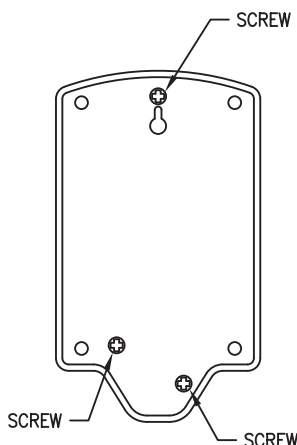


Figure B

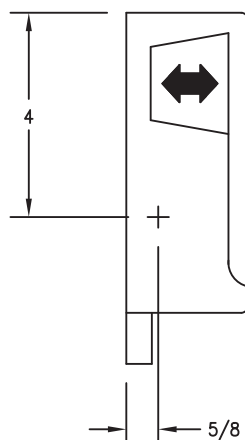
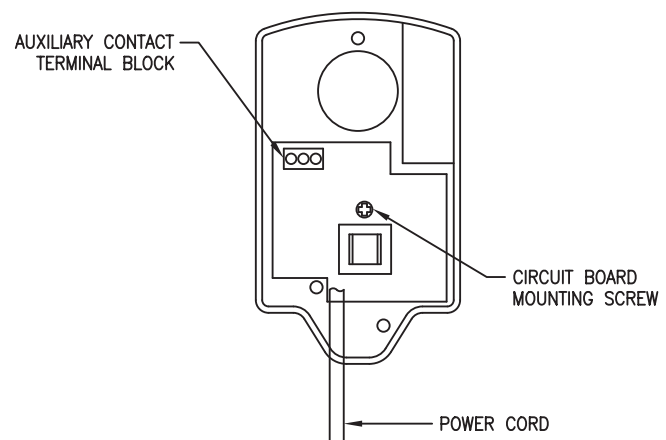


Figure C



⚠ WARNING

All electrical systems must be installed by a qualified licensed electrician according to the National Electrical Code and all other applicable codes.

SK2775

BELL ALARM SYSTEMS

TYPICAL INSTALLATION AND WIRING INSTRUCTIONS

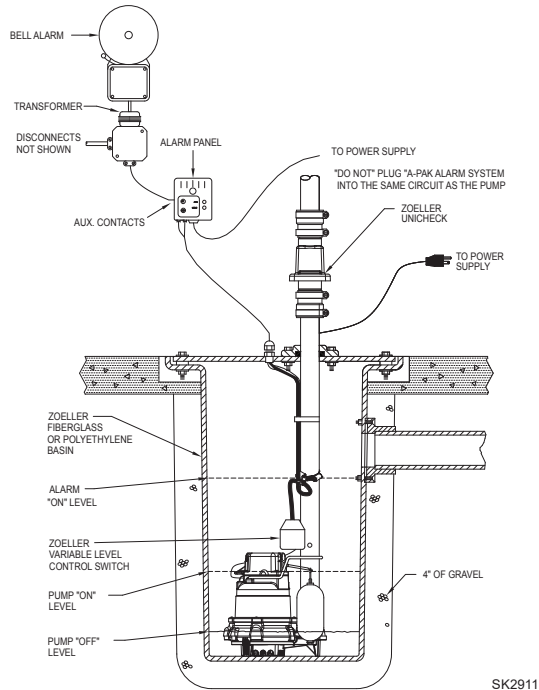
⚠ WARNING

All electrical systems must be installed by a qualified licensed electrician according to the National Electrical Code and all other applicable codes.

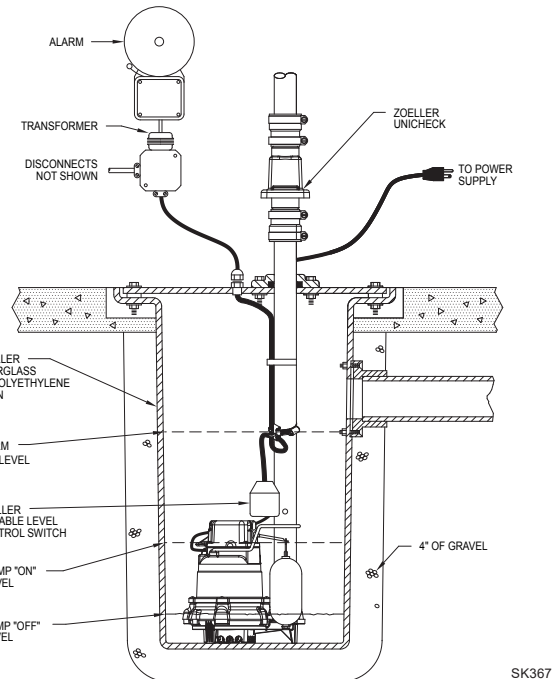
Model	Voltage	dB @ 10'	Bell	Transformer	Float
10-0015	115V	74	✓	✓	
10-0016	230V	74	✓	✓	
10-0028	115V	78	✓	✓	✓

NOTE: Utility box and cordage sold separately. Bell Alarms 10-0015 and 10-0016 are designed to be used with Alarm Pack 10-2614.

TYPICAL SIMPLEX SYSTEMS WITH BELL ALARM SYSTEM



SK2911



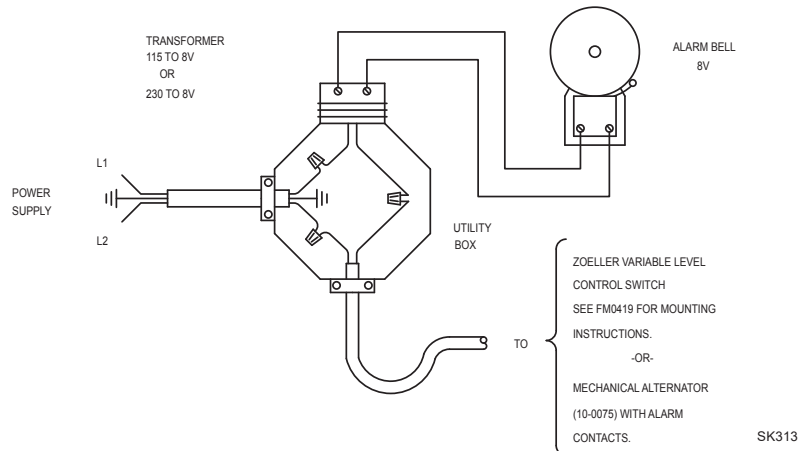
SK367

WIRING DIAGRAM

(10-0015)
(10-0016)
(10-0028)

DISCONNECT
NOT SHOWN

NOTE: ALARM SYSTEM SHOULD BE ON
A SEPARATE CIRCUIT FROM PUMPS.



MAIL TO: P.O. BOX 16347 • Louisville, KY 40256-0347
SHIP TO: 3649 Cane Run Road • Louisville, KY 40211-1961
(502) 778-2731 • 1 (800) 928-PUMP • FAX (502) 774-3624

Trusted. Tested. Tough.®

Visit our website:
zoellerpumps.com