

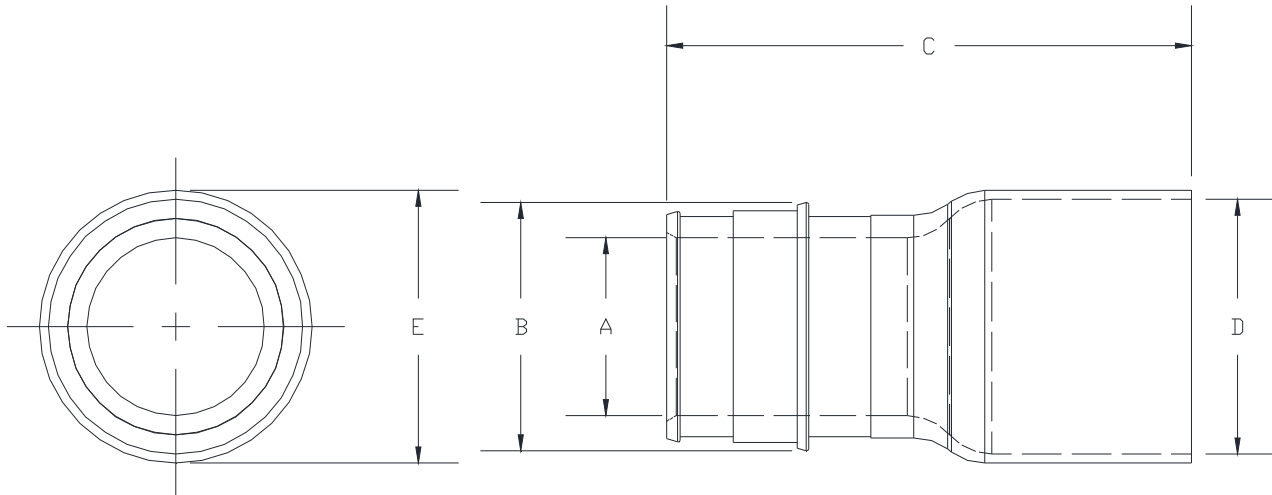
**QE_GX**

SPECIFICATION SHEET

XL BRASS F1960 EXPANSION PEX x FEMALE SWEAT ADAPTER

TAG _____

Dimensional Data (inches and [mm]) are Subject to Manufacturing Tolerances and Change Without Notice



Part Number	XL Brass F1960 Expansion PEX x Female Sweat Adapter Size	Dimensions in In [mm]				
		A	B	C	D*	E
QE750GX	1/2" EX PEX x 1/2" Female Sweat	0.38 [10]	0.61 [16]	1.24 [32]	1/2" CU FSWT	0.71 [18]
QE755GX	1/2" EX PEX x 3/4" Female Sweat	0.38 [10]	0.61 [16]	1.50 [38]	3/4" CU FSWT	0.96 [24]
QE770GX	3/4" EX PEX x 1/2" Female Sweat	0.60 [15]	0.87 [22]	1.50 [38]	1/2" CU FSWT	0.95 [24]
QE775GX	3/4" EX PEX x 3/4" Female Sweat	0.60 [15]	0.87 [22]	1.73 [44]	3/4" CU FSWT	0.96 [24]
QE778GX	3/4" EX PEX x 1" Female Sweat	0.60 [15]	0.87 [22]	1.91 [49]	1" CU FSWT	1.22 [31]
QE800GX	1" EX PEX x 1" Female Sweat	0.80 [20]	1.11 [28]	2.14 [54]	1" CU FSWT	1.22 [31]
QE812GX	1-1/4" EX PEX x 1-1/4" Female Sweat	0.96 [24]	1.36 [34]	2.50 [64]	1-1/4" CU FSWT	1.51 [38]
QE950GX	1-1/2" EX PEX x 1-1/2" Female Sweat	1.08 [28]	1.49 [38]	2.90 [74]	1-1/2" CU FSWT	1.78 [45]
QE1050GX	2" EX PEX x 2" Female Sweat	1.55 [39]	2.08 [53]	3.59 [91]	2" CU FSWT	2.31 [59]

*Fittings are designed to accept Nominal copper tubing size

Engineering Specification: Zurn PEX® XL-Low Lead Brass F1960 Expansion PEX x Female Sweat Adapter

The QE_GX is used with Zurn Non-Barrier Pex tubing in potable water applications. Not for use in reverse osmosis systems or in areas with known localized aggressive water chemistries. Manufactured from EcoBrass®, C69300. These fittings, as a system with Zurn PEX® tube and Zurn PEX reinforcing rings are pressure rated at 160 PSI at 73°F, 100 PSI at 180°F, and 80 PSI at 200°F. These fittings are 3rd Party certified as complying with the following standards: NSF/ANSI Standard 61, NSF/ANSI Standard 372 (Low Lead), ASTM F1960, CSA B137.5

Accessories

___	QER3X	1/2" PEX Expansion Reinforcing Ring w/Stop
___	QER4X	3/4" PEX Expansion Reinforcing Ring w/Stop
___	QER5X	1" PEX Expansion Reinforcing Ring w/Stop
___	QER6X	1-1/4" PEX Expansion Reinforcing Ring w/Stop
___	QER7X	1-1/2" PEX Expansion Reinforcing Ring w/Stop
___	QER8X	2" PEX Expansion Reinforcing Ring w/Stop
___	QEMT345	F1960 Manual Expansion Tool Kit - 1/2" to 1"