

Volume II: Xirtec® 140 PVC & Corzan® CPVC Dimensional Data & Weights

Industrial Technical
Manual Series

SECOND EDITION

IPEX XIRTEC® 140 PVC & CORZAN® CPVC

Dimensional Data and Weights



www.ipexinc.com

IPEX Xirtec[®] 140 PVC & Corzan[®] CPVC

Dimensional Data & Weights

Industrial Technical Manual Series

Vol. II, 2nd Edition

© 2006 by IPEX. All rights reserved. No part of this book may be used or reproduced in any manner whatsoever without prior written permission. For information contact: IPEX, Marketing, 2441 Royal Windsor Drive, Mississauga, Ontario, Canada, L5J 4C7.

The information contained here within is based on current information and product design at the time of publication and is subject to change without notification. IPEX does not guarantee or warranty the accuracy, suitability for particular applications, or results to be obtained therefrom.



About IPEX

At IPEX, we have been manufacturing non-metallic pipe and fittings since 1951. We formulate our own compounds and maintain strict quality control during production. Our products are made available for customers thanks to a network of regional stocking locations throughout North America. We offer a wide variety of systems including complete lines of piping, fittings, valves and custom-fabricated items.

More importantly, we are committed to meeting our customers' needs. As a leader in the plastic piping industry, IPEX continually develops new products, modernizes manufacturing facilities and acquires innovative process technology. In addition, our staff take pride in their work, making available to customers their extensive thermoplastic knowledge and field experience. IPEX personnel are committed to improving the safety, reliability and performance of thermoplastic materials. We are involved in several standards committees and are members of and/or comply with the organizations listed on this page.

For specific details about any IPEX product, contact our customer service department.



Safety Alerts

Engineered thermoplastics are safe inert materials that do not pose any significant safety or environmental hazards during handling or installation. However, improper installation or use can result in personal injury and/or property damage. It is important to be aware of and recognize safety alert messages as they appear in this manual.

The types of safety alert messages are described below.



This safety alert symbol indicates important safety messages in this manual. When you see this symbol be alert to the possibility of personal injury and carefully read and fully understand the message that follows.

WARNING

“WARNING” identifies hazards or unsafe practices that can result in severe personal injury or death if instructions, including recommended precautions, are not followed.

CAUTION

“CAUTION” identifies hazards or unsafe practices that can result in minor personal injury or product or property damage if instructions, including recommended precautions, are not followed.

Note:

The use of the word “NOTE” signifies special instructions which are important but are not related to hazards.

For the materials described in this manual, the following warning applies.

WARNING



NEVER use compressed air or gas in PVC/CPVC/PP/PVDF pipe fittings.

NEVER test PVC/CPVC/PP/PVDF pipe and fittings with compressed air or gas, or air-over-water boosters.

ONLY use PVC/CPVC/PP/PVDF pipe for water and approved chemicals.

Use of compressed air or gas in PVC/CPVC/PP/PVDF pipe and fittings can result in explosive failures and cause severe injury or death.

This page intentionally
left blank

CONTENTS

Process Piping Systems Dimensions Manual

About IPEX	
Safety Alerts	<i>i</i>

Section One: General Information

Overview	1
Material Description	1
Standard Schedule 80 Dimensions	2
Standard Schedule 40 Dimensions	3
National Pipe Thread Dimensions	4

Section Two: Schedule 80 Fittings

Manufacturer's Product Specification: Schedule 80 PVC CPVC.	5
Manufacturer's Product Specification: Schedule 80 PVC CPVC.	6
Couplings.	7
Reducing Couplings	9
Reducing Bushings	11
90° Elbows	15
45° Elbows	18
22.5° Elbows	20
Tees	21
Reducing Tees	24
Wyes	26
Reducing Wyes	26
Crosses	28
Flanges	29
Unions	34
Adapters	38
Nipples	42
Caps	47
Plugs	49

Section Three: Schedule 40 Fittings

Manufacturer's Product Specification: Schedule 40.	51
Couplings.	52
Reducing Bushings	54
90° Elbows	59
45° Elbows	64
Tees	65
Reducing Tees	68
Wyes	76
Crosses	78
Unions	78
Adapters	80
Reducing Adapters	83
Caps	84
Plugs	86
Saddles	88

OVERVIEW

This manual provides the most up-to-date dimensional information about vinyl process piping fittings produced by IPEX.

Only IPEX offers Xirtec®, a complete system of pipe, valves, and fittings engineered and manufactured to IPEX's strict quality, performance and dimensional standards.

Xirtec® (PVC) and Corzan® (CPVC) high performance systems feature outstanding resistance to photo degradation, creep stress and immunity to oxidation, and are exceptionally suited for use with a wide range of acids, alcohols, salts and halogens.

For comprehensive design and installation information regarding IPEX's Xirtec® and Corzan® systems, please refer to Volume 1 of the IPEX Industrial Technical Manual Series entitled, "*Vinyl Process Piping Systems*".

MATERIAL DESCRIPTION

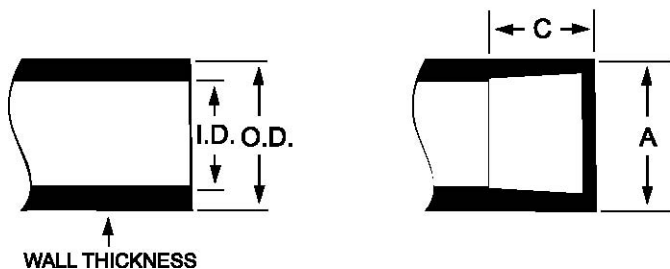
PVC (Polyvinyl Chloride)

Xirtec 140 PVC used in the manufacture of Schedule 40 and 80 fittings is of Type I, Grade 1 compound (cell classification 12454) as stated in ASTM D1784. The maximum service temperature for PVC is 140°F (60°C) under pressure, with occasional exposure to boiling water (212°F, 100°C). With a hydrostatic design basis of 4000 PSI at 73°F (23°C) and a design stress of 2000 PSI at 73°F (23°C) PVC has the highest long-term hydrostatic strength of any major thermoplastic material used for piping.

CPVC (Chlorinated Polyvinyl Chloride)

Corzan CPVC used in the manufacture of Schedule 80 fittings is of Type IV, Grade 1 compound (cell classification 24448) as stated in ASTM D1784. The maximum service temperature for CPVC is 200°F (93°C) under pressure with occasional exposure to boiling water (212°F, 100°C). Similar to PVC, the hydrostatic design basis of CPVC is 4000 PSI at 73°F (23°C), and the design stress is 2000 PSI at 73°F (23°C). CPVC has physical properties similar to PVC at 73°F (23°C) and chemical resistance similar to or generally better than PVC. CPVC has proved to be an excellent piping material for hot and cold corrosive liquids, hot and cold water distribution, and similar applications above the temperature range of PVC.

STANDARD SCHEDULE 80 DIMENSIONS



Pipe Dimension

ASTM D1785 (PVC)
ASTM F441 (CPVC)

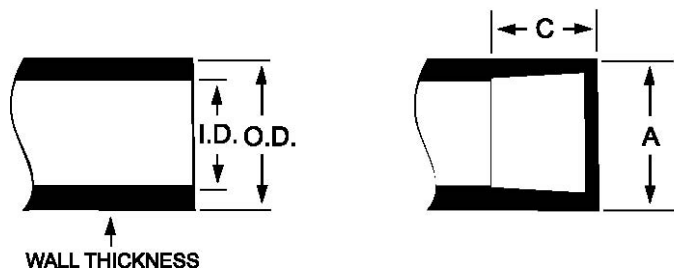
Socket Dimension

ASTM D2467 (PVC)
ASTM F439 (CPVC)

Nom. Pipe Size	Pipe O.D.	O.D. Tolerance	Min. Wall Thickness	DIAMETER			Min. Socket Length (C)
				Socket Entrance I.D. (A)	Socket Bottom I.D. (B)	Tolerance (A)	
1/8	0.405	±0.004	0.095	0.417	0.401	±0.004	0.500
1/4	0.540	±0.004	0.119	0.552	0.536	±0.004	0.625
3/8	0.675	±0.004	0.126	0.687	0.671	±0.004	0.750
1/2	0.840	±0.004	0.147	0.848	0.836	±0.004	0.875
3/4	1.050	±0.004	0.154	1.058	1.046	±0.004	1.000
1	1.315	±0.005	0.179	1.325	1.310	±0.005	1.125
1-1/4	1.660	±0.005	0.191	1.670	1.655	±0.005	1.250
1-1/2	1.900	±0.006	0.200	1.912	1.894	±0.006	1.375
2	2.375	±0.006	0.218	2.387	2.369	±0.006	1.500
2-1/2	2.875	±0.007	0.276	2.889	2.868	±0.007	1.750
3	3.500	±0.008	0.300	3.516	3.492	±0.008	1.875
4	4.500	±0.009	0.337	4.518	4.491	±0.009	2.250
5	5.563	±0.010	0.375	5.583	5.553	±0.010	2.625
6	6.625	±0.011	0.432	6.647	6.614	±0.011	3.000
8	8.625	±0.015	0.500	8.665	8.610	±0.015	4.000
10	10.750	±0.015	0.593	10.780	10.735	±0.015	5.000
12	12.750	±0.015	0.687	12.780	12.735	±0.015	6.000

Note: All dimensions measured in inches (in.)

STANDARD SCHEDULE 40 DIMENSIONS



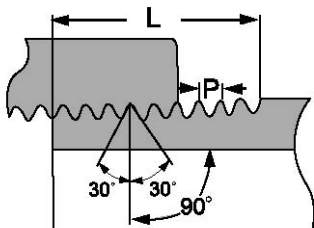
Pipe Dimension
ASTM D1785

Socket Dimension
ASTM D2466

Nom. Pipe Size	Pipe O.D.	O.D. Tolerance	Min. Wall Thickness	DIAMETER			Min. Socket Length (C)
				Socket Entrance I.D. (A)	Socket Bottom I.D. (B)	Tolerance (A)	
1/8	0.405	±0.004	0.068	0.417	0.401	±0.004	0.500
1/4	0.540	±0.004	0.088	0.552	0.536	±0.004	0.625
3/8	0.675	±0.004	0.091	0.687	0.671	±0.004	0.750
1/2	0.840	±0.004	0.109	0.848	0.836	±0.004	0.875
3/4	1.050	±0.004	0.113	1.058	1.046	±0.004	1.000
1	1.315	±0.005	0.133	1.325	1.310	±0.005	1.125
1-1/4	1.660	±0.005	0.145	1.670	1.655	±0.005	1.250
1-1/2	1.900	±0.006	0.154	1.912	1.894	±0.006	1.375
2	2.375	±0.006	0.203	2.387	2.369	±0.006	1.500
2-1/2	2.875	±0.007	0.203	2.889	2.868	±0.007	1.750
3	3.500	±0.008	0.216	3.516	3.492	±0.008	1.875
4	4.500	±0.009	0.337	4.518	4.491	±0.009	2.250
5	5.563	±0.010	0.258	5.583	5.553	±0.010	2.625
6	6.625	±0.011	0.280	6.647	6.614	±0.011	3.000
8	8.625	±0.015	0.322	8.665	8.610	±0.015	4.000
10	10.750	±0.015	0.365	10.780	10.735	±0.015	5.000
12	12.750	±0.015	0.408	12.780	12.735	±0.015	6.000

Note: All dimensions measured in inches (in.)

NPT - National Pipe Thread



American National Standard Taper Pipe Threads
(NPT) ANSI B1.20.1, ASTM F1498

Nom. Pipe Size	Pipe O.D.	Female Thread Min. Length (T)	Male Thread Min. Length (S)	Overall Thread Length (L)	Thread Pitch (P)	Thread Per Inch	Height of Thread (H)
1/8	0.405	0.380	0.310	0.3924	0.03704	27	0.02963
1/4	0.540	0.500	0.440	0.5946	0.05556	18	0.04444
3/8	0.675	0.500	0.440	0.6006	0.05556	18	0.04444
1/2	0.840	0.640	0.530	0.7815	0.07143	14	0.05714
3/4	1.050	0.650	0.550	0.7935	0.07143	14	0.05714
1	1.315	0.810	0.680	0.9845	0.08696	11.5	0.06957
1-1/4	1.660	0.850	0.710	1.0085	0.08696	11.5	0.06957
1-1/2	1.900	0.850	0.720	1.0252	0.08696	11.5	0.06957
2	2.375	0.900	0.760	1.0582	0.08696	11.5	0.06957
2-1/2	2.875	1.210	1.140	1.5712	0.12500	8	1.0000
3	3.500	1.300	1.200	1.6337	0.12500	8	1.0000
4	4.500	1.380	1.300	1.7337	0.12500	8	1.0000
6	6.625	1.500	1.440	1.9462	0.12500	8	1.0000

Note: The basic dimensions of the American National Standard Taper Pipe Thread are given in inches to four or five decimal places. While this implies a great degree of precision than ordinarily attained, these dimensions are the basis of gage dimensions and are so expressed for the purpose of eliminating errors in computation.

A. MANUFACTURER'S PRODUCT SPECIFICATION: SCHEDULE 80 PVC

Scope

This specification sheet covers the manufacturer's requirements for Xirtec®140 PVC Schedule 80 pipe fittings as manufactured by IPEX. These fittings meet or exceed the standards set by the American Society for Testing and Materials (ASTM) and the National Sanitation Foundation (NSF) International, Standards 14/61.

PVC Materials

Rigid Xirtec®140 PVC (Polyvinyl Chloride) used in the manufacture of Schedule 80 fittings is of Type I, Grade 1 compound (cell classification 12454) as stated in ASTM D1784. Raw material used in molding shall contain the specified amounts of color pigment, stabilizers, and other additives approved by NSF International.

Dimensions

Physical dimensions and tolerances of Xirtec®140 PVC Schedule 80 IPS fittings as manufactured by IPEX meet the requirements of ASTM Standard Specification D2467 for socket-type fittings and ASTM D2464 for threaded fittings. Threaded fittings have Taper Pipe Threads in accordance with ANSI/ASME B1.20.1. Flanged fittings have nominal dimensions in accordance with ANSI/ASME B16.5.

Marking

Xirtec®140 PVC Schedule 80 fittings are marked as prescribed in ASTM D2467 and D2464 to indicate the manufacturer's name and trademark, material designation, the NSF mark, size of fitting, and ASTM designation D2467 (socket) or D2464 (threaded).

Sample Specification

All Schedule 80 socket fittings shall conform to ASTM D2467. All Schedule 80 threaded fittings shall conform to ASTM D2464. All 150 Class flanges shall conform to ANSI/ASME B16.5. All pipe, fittings, and valves shall be compatible Xirtec®140 compound and produced by one manufacturer; as supplied by IPEX.

Notes

All dimensions are in inches unless otherwise specified. Dimensions are subject to change without notice. Contact the factory for clarifications.



B. MANUFACTURER'S PRODUCT SPECIFICATION: SCHEDULE 80 CPVC

Scope

This specification sheet covers the manufacturer's requirements for Corzan® CPVC Schedule 80 pipe fittings as manufactured by IPEX. These fittings meet or exceed the standards set by the American Society for Testing and Materials (ASTM) and the National Sanitation Foundation (NSF) International, Standards 14/61.

CPVC Materials

Rigid Corzan® CPVC (Chlorinated Polyvinyl Chloride) used in the manufacture of Schedule 80 fittings is of Type IV, Grade 1 compound (cell classification 24448) as stated in ASTM D1784. Raw material used in molding shall contain the specified amounts of color pigment, stabilizers, and other additives approved by NSF International.

Dimensions

Physical dimensions and tolerances of Corzan® CPVC Schedule 80 IPS fittings as manufactured by IPEX meet the requirements of ASTM Standard Specification F439 for socket-type fittings and ASTM F437 for threaded fittings. Threaded fittings have Taper Pipe Threads in accordance with ANSI/ASME B1.20.1. Flanged fittings have nominal dimensions in accordance with ANSI/ASME B16.5.

Marking

Corzan® CPVC Schedule 80 fittings are marked as prescribed in ASTM F439 and F437 to indicate the manufacturer's name and trademark, material designation, the NSF mark, size of fitting, and ASTM designation F439 (socket) or F437 (threaded).

Sample Specification

All Schedule 80 socket fittings shall conform to ASTM F439. All Schedule 80 threaded fittings shall conform to ASTM F437. All 150 Class flanges shall conform to ANSI/ASME B16.5. All pipe, fittings, and valves shall be compatible Corzan® compound and produced by one manufacturer; as supplied by IPEX.

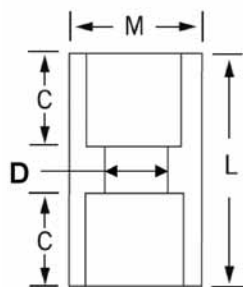
Notes

All dimensions are in inches unless otherwise specified. Dimensions are subject to change without notice. Contact the factory for clarifications.



COUPLINGS

Schedule 80
COUPLINGS
Soc x Soc

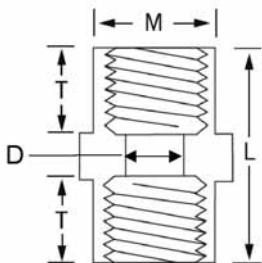


Nom. Pipe Size	Xirtec		Corzan		CRITICAL DIMENSIONS				
	Univ. Part No.	IPEX Part No.	Univ. Part No.	IPEX Part No.	C	D	L	M	Wt.(lbs)
$\frac{1}{4} \times \frac{1}{4}$	829002	036088	9829002	059130	0.655	0.302	1.375	0.845	0.020
$\frac{3}{8} \times \frac{3}{8}$	829003	036089	9829003	059131	0.750	0.423	1.625	1.000	0.031
$\frac{1}{2} \times \frac{1}{2}$	829005	036090	9829005	059132	0.900	0.526	1.920	1.240	0.055
$\frac{3}{4} \times \frac{3}{4}$	829007	036091	9829007	059133	1.035	0.722	2.170	1.505	0.073
1 x 1	829010	036092	9829010	059134	1.145	0.936	2.395	1.770	0.123
$1\text{-}\frac{1}{4} \times 1\text{-}\frac{1}{4}$	829012	036093	9829012	059135	1.280	1.255	2.670	2.140	0.172
$1\text{-}\frac{1}{2} \times 1\text{-}\frac{1}{2}$	829015	036094	9829015	059136	1.400	1.476	2.915	2.410	0.227
2 x 2	829020	036095	9829020	059137	1.535	1.913	3.170	2.900	0.311
$2\text{-}\frac{1}{2} \times 2\text{-}\frac{1}{2}$	829025	036096	9829025	059138	1.780	2.290	3.755	3.570	0.550
3 x 3	829030	036097	9829030	059139	1.900	2.864	4.025	4.195	0.829
4 x 4	829040	036098	9829040	059140	2.275	3.786	4.765	5.285	1.444
6 x 6	829060	036099	9829060	059141	3.020	5.709	6.310	7.645	3.435
8 x 8	829080	036100	9829080	059142	4.540	7.565	9.625	9.870	6.610

SCHEDULE 80 FITTINGS

COUPLINGS

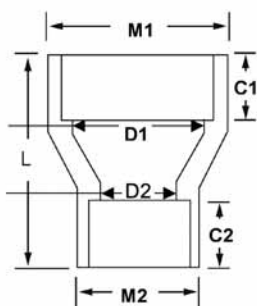
Schedule 80
COUPLINGS
FPT x FPT



Nom. Pipe Size	Xirtec		Corzan		CRITICAL DIMENSIONS				
	Univ. Part No.	IPEX Part No.	Univ. Part No.	IPEX Part No.	T	D	L	M	Wt.(lbs)
1/4 x 1/4	830002	036104	9830002	059143	0.595	0.302	1.345	0.845	0.020
3/8 x 3/8	830003	036105	9830003	059144	0.595	0.423	1.470	1.000	0.040
1/2 x 1/2	830005	036106	9830005	059145	0.755	0.526	1.605	1.240	0.073
3/4 x 3/4	830007	036107	9830007	059146	0.755	0.722	1.620	1.505	0.086
1 x 1	830010	036108	9830010	059147	0.940	0.936	2.010	1.770	0.148
1-1/4 x 1-1/4	830012	036109	9830012	059148	1.055	1.255	2.210	2.140	0.216
1-1/2 x 1-1/2	830015	036110	9830015	059149	1.065	1.476	2.225	2.410	0.273
2 x 2	830020	036111	9830020	059150	1.200	1.913	2.500	2.900	0.381
2-1/2 x 2-1/2	830025	036112	9830025	059151	1.460	2.290	3.125	3.570	0.692
3 x 3	830030	036113	9830030	059152	1.530	2.864	3.190	4.195	1.060
4 x 4	830040	036114	9830040	059153	1.585	3.786	3.405	5.285	1.490

REDUCING COUPLINGS

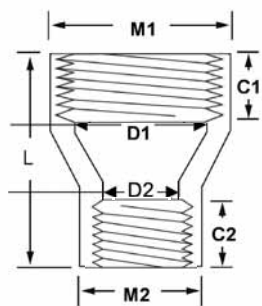
Schedule 80
COUPLINGS
Soc x Soc - Reducing



Nom. Pipe Size	Xirtec		Corzan		CRITICAL DIMENSIONS							
	Univ. Part No.	IPEX Part No.	Univ. Part No.	IPEX Part No.	C1	C2	D1	D2	L	M1	M2	Wt.(lbs)
$3/4 \times 1/2$	829101	036719	9829101	059460	1.040	0.885	0.722	0.526	2.080	1.505	1.240	0.073
$1 \times 1/2$	829130	036720	9829130	059461	1.165	0.880	0.936	0.526	2.380	1.770	1.240	0.101
$1 \times 3/4$	829131	036721	9829131	059462	1.165	1.035	0.936	0.722	2.385	1.770	1.505	0.100
$1-1/4 \times 1/2$	-	-	9829166	059621	1.250	0.875	1.255	0.526	2.250	2.140	1.240	0.132
$1-1/4 \times 3/4$	829167	036723	9829167	059622	1.280	1.000	1.255	0.722	2.590	2.140	1.505	0.141
$1-1/4 \times 1$	829168	036724	9829168	059463	1.280	1.155	1.255	0.936	2.660	2.140	1.770	0.157
$1-1/2 \times 1/2$	829209	036725	9829209	059623	1.375	0.875	1.476	0.526	2.845	2.140	1.240	0.170
$1-1/2 \times 3/4$	829210	036726	9829210	059464	1.375	1.000	1.476	0.722	2.845	2.140	1.505	0.181
$1-1/2 \times 1$	829211	036727	9829211	059465	1.410	1.160	1.476	0.936	3.060	2.140	1.770	0.209
$1-1/2 \times 1-1/4$	829212	036728	9829212	059466	1.410	1.280	1.476	1.255	3.050	2.140	2.140	0.210
$2 \times 1/2$	829247	036897	-	-	1.500	0.885	1.913	0.526	2.480	2.900	1.240	0.249
$2 \times 3/4$	-	-	9829248	059624	1.500	1.000	1.913	0.722	3.225	2.900	1.505	0.287
2×1	829249	036729	9829249	059467	1.545	1.160	1.913	0.936	3.530	2.900	1.770	0.289
$2 \times 1-1/4$	-	-	9829250	059625	1.500	1.250	1.913	1.255	3.225	2.900	2.140	0.309
$2 \times 1-1/2$	829251	036731	9829251	059458	1.540	1.410	1.913	1.476	3.515	2.900	2.410	0.326
$2-1/2 \times 2$	-	-	9829292	059626	1.750	1.500	2.290	1.913	3.635	3.570	2.900	0.353
3×2	829338	036735	9829338	059470	1.910	1.535	2.864	1.913	4.200	4.195	2.900	0.701
4×2	829420	036736	9829420	059459	2.290	1.540	3.786	1.913	5.110	5.285	2.900	1.257
4×3	829422	036738	9829422	059472	2.290	1.905	3.786	2.864	5.105	5.285	4.195	1.338
6×4	829532	036740	9829532	059471	3.030	2.290	5.709	3.786	6.740	7.645	5.285	3.157
8×6	829585	036743	9829585	059473	4.040	3.000	7.565	5.709	8.040	9.870	7.645	6.199

SCHEDULE 80 FITTINGS

REDUCING COUPLINGS



Schedule 80
COUPLINGS
FPT x FPT - Reducing

SCHEDULE 80 FITTINGS

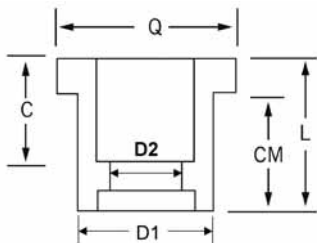
Nom. Pipe Size	Xirtec		Corzan		CRITICAL DIMENSIONS							
	Univ. Part No.	IPEX Part No.	Univ. Part No.	IPEX Part No.	C1	C2	D1	D2	L	M1	M2	Wt.(lbs)
1/2 x 1/4	830072	036746	-	-	0.875	0.625	0.526	0.302	2.280	1.240	0.845	0.049
3/4 x 1/2	830101	036748	-	-	1.000	0.875	0.722	0.526	2.345	1.505	1.240	0.090
1 x 1/2	830130	036749	-	-	1.125	0.985	0.936	0.526	2.740	1.770	1.240	0.201
1 x 3/4	830131	036750	-	-	1.125	1.000	0.936	0.722	2.740	1.770	1.505	0.201
1-1/4 x 3/4	830167	036751	-	-	1.250	1.525	1.255	0.722	3.040	2.140	1.505	0.291
1-1/2 x 1	830211	036754	-	-	1.375	1.125	1.476	0.936	3.155	2.410	1.770	0.311
2 x 1-1/2	830251	035758	-	-	1.500	1.375	1.913	1.476	3.405	2.900	2.410	0.560

REDUCING BUSHINGS

Schedule 80

REDUCING BUSHINGS

Spig x Soc

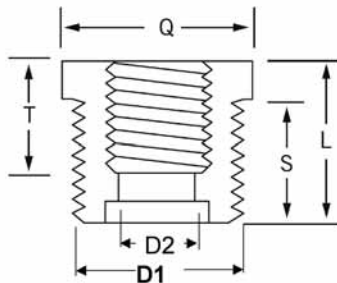


Nom. Pipe Size	Xirtec		Corzan		CRITICAL DIMENSIONS						
	Univ. Part No.	IPEX Part No.	Univ. Part No.	IPEX Part No.	C	CM	D1	D2	L	Q	Wt.(lbs)
3/8 x 1/4	837052	036599	9837052	059627	0.750	0.770	0.675	0.302	0.975	0.800	0.011
1/2 x 1/4	837072	036600	9837072	059373	0.875	0.890	0.840	0.302	1.090	0.970	0.020
1/2 x 3/8	837073	036601	9837073	059374	0.875	0.880	0.840	0.423	1.115	1.005	0.010
3/4 x 1/2	837101	036604	9837101	059375	1.000	1.020	1.050	0.526	1.380	1.250	0.033
1 x 1/2	837130	036605	9837130	059376	1.125	1.125	1.315	0.526	1.500	1.635	0.073
1 x 3/4	837131	036606	9837131	059377	1.125	1.305	1.315	0.722	1.505	1.635	0.057
1-1/4 x 1/2	837166	036607	9837166	059378	1.250	1.260	1.660	0.526	1.635	2.080	0.139
1-1/4 x 3/4	837167	036608	9837167	059379	1.250	1.255	1.660	0.722	1.625	2.075	0.123
1-1/4 x 1	837168	036609	9837168	059380	1.250	1.305	1.660	0.936	1.685	2.065	0.099
1-1/2 x 1/2	837209	036610	9837209	059381	1.375	1.380	1.900	0.526	1.755	2.260	0.163
1-1/2 x 3/4	837210	036611	9837210	059382	1.375	1.380	1.900	0.722	1.750	2.260	0.172
1-1/2 x 1	837211	036612	9837211	059383	1.375	1.380	1.900	0.936	1.755	2.260	0.146
1-1/2 x 1-1/4	837212	036613	9837212	059384	1.295	1.385	1.900	1.255	1.760	2.265	0.099
2 x 1/2	837247	036614	9837247	059385	1.500	1.505	2.375	0.526	1.875	2.815	0.236
2 x 3/4	837248	036615	9837248	059386	1.500	1.505	2.375	0.722	1.865	2.820	0.258
2 x 1	837249	036616	9837249	059387	1.500	1.520	2.375	0.936	1.875	2.825	0.247
2 x 1-1/4	837250	036617	9837250	059388	1.500	1.520	2.375	1.255	1.895	2.840	0.236
2 x 1-1/2	837251	036618	9837251	059389	1.500	1.445	2.375	1.476	1.885	2.820	0.194
2-1/2 x 1-1/4	837290	036620	9837290	059628	1.350	2.000	2.875	1.255	2.300	3.280	0.430
2 1/2 x 1-1/2	837291	036621	9837291	059629	1.560	2.000	2.875	1.476	2.300	3.290	0.452
2-1/2 x 2	837292	036622	9837292	059392	1.750	1.885	2.875	1.913	2.120	3.270	0.280
3 x 1	837335	036623	9837335	059568	1.875	1.900	3.500	0.936	2.265	3.905	0.593
3 x 1-1/4	837336	036269	9837336	059630	1.875	1.870	3.500	1.255	2.265	3.735	0.639
3 x 1-1/2	837337	036624	9837337	059393	1.875	1.870	3.500	1.476	2.250	3.890	0.595
3 x 2	837338	036625	9837338	059394	1.875	1.870	3.500	1.913	2.250	3.890	0.650
3 x 2-1/2	837339	036626	9837339	059395	1.875	1.885	3.500	2.290	2.260	3.900	0.423
4 x 2	837420	036628	9837420	059396	2.250	2.280	4.500	1.913	2.660	4.910	1.091
4 x 2-1/2	837421	036629	-	-	2.250	2.270	4.500	2.290	2.655	4.890	1.050
4 x 3	837422	036630	9837422	059397	2.250	2.270	4.500	2.864	2.665	4.920	0.895
6 x 2	837528	036632	9837528	059398	3.000	3.470	6.625	1.913	3.990	6.850	3.007
6 x 3	837530	036633	9837530	059399	3.000	3.100	6.625	2.864	3.720	7.335	3.038
6 x 4	837532	036634	9837532	059400	3.000	3.105	6.625	3.786	3.720	7.330	3.086
8 x 4	837582	136155	-	-	4.000	4.055	8.625	3.786	5.120	9.435	1.920
8 x 6	837585	036638	9837585	059401	4.000	4.085	8.625	5.709	4.465	9.360	5.500

SCHEDULE 80 FITTINGS

REDUCING BUSHINGS

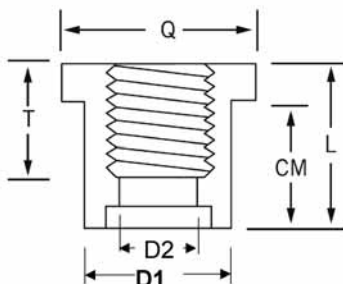
Schedule 80
REDUCING BUSHINGS
MPT x FPT



Nom. Pipe Size	Xirtec		Corzan		CRITICAL DIMENSIONS						
	Univ. Part No.	IPEX Part No.	Univ. Part No.	IPEX Part No.	D1	D2	L	Q	S	T	Wt.(lbs)
3/8 x 1/4	839052	036647	9839052	059402	0.675	0.302	0.810	0.805	0.600	0.625	0.010
1/2 x 1/4	839072	036648	9839072	059403	0.840	0.302	0.875	0.875	0.680	0.570	0.020
1/2 x 3/8	839073	036649	9839073	059404	0.840	0.423	0.940	1.000	0.745	0.580	0.011
3/4 x 1/4	839098	036651	9839098	059405	1.050	0.302	1.010	1.185	0.785	0.675	0.031
3/4 x 3/8	839099	036652	9839099	059406	1.050	0.423	1.005	1.200	0.785	0.600	0.031
3/4 x 1/2	839101	036653	9839101	059407	1.050	0.526	0.995	1.380	0.685	0.760	0.029
1 x 1/4	839128	036654	9839128	059643	1.315	0.302	1.230	1.500	0.960	0.630	0.060
1 x 3/8	839129	036655	9839129	059642	1.315	0.423	1.225	1.500	0.980	0.625	0.051
1 x 1/2	839130	036656	9839130	059408	1.315	0.526	1.130	1.685	0.815	0.765	0.053
1 x 3/4	839131	036657	9839131	059409	1.315	0.722	1.160	1.690	0.820	0.775	0.042
1-1/4 x 1/2	839166	036658	9839166	059410	1.660	0.526	1.370	2.070	0.990	0.695	0.108
1-1/4 x 3/4	839167	036659	9839167	059411	1.660	0.722	1.390	2.075	1.010	0.805	0.104
1-1/4 x 1	839168	036660	9839168	059412	1.660	0.936	1.395	2.070	1.015	1.020	0.084
1-1/2 x 1/2	839209	036661	9839209	059413	1.900	0.526	1.215	2.100	0.900	0.835	0.110
1-1/2 x 3/4	839210	036662	9839210	059414	1.900	0.722	1.375	2.315	0.985	0.805	0.134
1-1/2 x 1	839211	036663	9839211	059415	1.900	0.936	1.380	2.315	0.990	0.995	0.123
1-1/2 x 1-1/4	839212	036664	9839212	059416	1.900	1.255	1.380	2.315	1.010	1.015	0.084
2 x 1/2	839247	036665	9839247	059417	2.375	0.526	1.405	2.820	1.035	0.690	0.201
2 x 3/4	839248	036666	9839248	059418	2.375	0.722	1.385	2.760	1.005	0.810	0.196
2 x 1	839249	036667	9839249	059419	2.375	0.936	1.385	2.770	0.995	0.995	0.205
2 x 1-1/4	839250	036668	9839250	059420	2.375	1.255	1.410	2.815	1.035	0.860	0.179
2 x 1-1/2	839251	036669	9839251	059421	2.375	1.476	1.380	2.760	1.010	1.010	0.148
2-1/2 x 2	839292	036672	9839292	059422	2.875	1.913	1.970	3.125	1.555	1.065	0.240
3 x 1-1/2	839337	036673	9839337	059423	3.500	1.476	1.995	3.740	1.625	1.040	0.549
3 x 2	839338	036674	9839338	059424	3.500	1.913	2.030	3.755	1.625	1.065	0.509
3 x 2-1/2	839339	036675	9839339	059425	3.500	2.290	2.020	3.740	1.630	1.560	0.379
4 x 2	839420	036676	9839420	059426	4.500	1.913	1.940	4.730	1.550	1.000	0.829
4 x 3	839422	036677	9839422	059427	4.500	2.864	2.125	4.755	1.730	1.625	0.690

REDUCING BUSHINGS

Schedule 80
REDUCING BUSHINGS
Spig x FPT



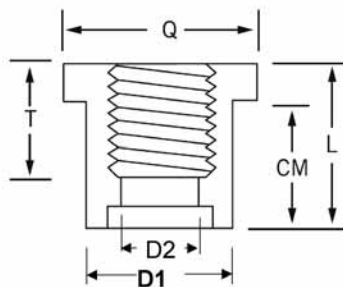
Nom. Pipe Size	Xirtec		Corzan		CRITICAL DIMENSIONS						
	Univ. Part No.	IPEX Part No.	Univ. Part No.	IPEX Part No.	CM	D1	D2	L	Q	T	Wt.(lbs)
3/8 x 1/4	838052	036679	9838052	059634	0.750	0.675	0.302	0.960	0.795	0.600	0.011
1/2 x 1/8	-	-	9838071	059635	0.880	0.840	0.195	1.095	0.940	0.405	0.022
1/2 x 1/4	838072	036681	9838072	059428	0.820	0.840	0.302	1.015	0.880	0.570	0.020
1/2 x 3/8	838073	036682	9838073	059429	0.810	0.840	0.423	1.010	0.890	0.595	0.198
3/4 x 1/4	838098	036683	9838098	059430	1.000	1.050	0.302	1.230	1.200	0.705	0.397
3/4 x 1/2	838101	036684	9838101	059431	1.025	1.050	0.526	1.345	1.375	0.775	0.040
1 x 3/8	838129	036685	9838129	059636	1.160	1.315	0.423	1.410	1.500	0.590	0.060
1 x 1/2	838130	036686	9838130	059432	1.180	1.315	0.526	1.500	1.685	0.765	0.073
1 x 3/4	838131	036687	9838131	059433	1.200	1.315	0.722	1.500	1.685	0.775	0.064
1-1/4 x 1/2	838166	036688	9838166	059434	1.305	1.660	0.526	1.680	2.065	0.805	0.123
1-1/4 x 3/4	838167	036689	9838167	059435	1.255	1.660	0.722	1.645	2.075	0.690	0.123
1-1/4 x 1	838168	036690	9838168	059436	1.305	1.660	0.936	1.685	2.065	0.810	0.108
1-1/2 x 1/2	838209	036691	9838209	059437	1.375	1.900	0.526	1.755	2.260	0.685	0.157
1-1/2 x 3/4	838210	036692	9838210	059438	1.430	1.900	0.722	1.815	2.325	0.810	0.157
1-1/2 x 1	838211	036693	9838211	059439	1.415	1.900	0.936	1.805	2.320	1.010	0.154
1-1/2 x 1-1/4	838212	036694	9838212	059440	1.375	1.900	1.255	1.776	2.260	0.900	0.117
2 x 1/2	838247	036695	9838247	059441	1.505	2.375	0.526	1.880	2.810	0.685	0.227
2 x 3/4	838248	036696	9838248	059442	1.535	2.375	0.722	1.925	2.760	0.805	0.227
2 x 1	838249	036697	9838249	059443	1.540	2.375	0.936	1.915	2.755	0.995	0.236
2 x 1-1/4	838250	036698	9838250	059444	1.535	2.375	1.255	1.920	2.755	0.995	0.227
2 x 1-1/2	838251	036699	9838251	059445	1.535	2.375	1.476	1.920	2.755	0.995	0.205
2-1/2 x 1/2	838287	236002	9838287	059637	1.990	2.875	0.526	2.380	3.110	0.760	0.441
2-1/2 x 3/4	838288	036700	9838288	059446	1.990	2.875	0.722	2.380	3.110	0.840	0.450
2-1/2 x 1	838289	036701	9838289	059447	1.990	2.875	0.936	2.380	3.110	1.030	0.441
2-1/2 x 1-1/4	838290	036702	9838290	059448	1.990	2.875	1.255	2.380	3.110	1.045	0.421
2-1/2 x 1-1/2	838291	036703	9838291	059449	1.977	2.875	1.476	2.400	3.110	1.045	0.470
2-1/2 x 2	838292	036704	9838292	059450	1.750	2.875	1.913	1.955	3.190	1.000	0.311
3 x 3/4	838334	036705	9838334	059638	1.880	3.500	0.722	2.270	3.740	0.720	0.639

Continued

SCHEDULE 80 FITTINGS

REDUCING BUSHINGS

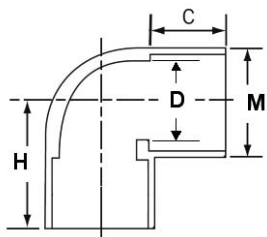
Schedule 80
REDUCING BUSHINGS
Spig x FPT Cont.



Nom. Pipe Size	Xirtec		Corzan		CRITICAL DIMENSIONS						
	Univ. Part No.	IPEX Part No.	Univ. Part No.	IPEX Part No.	CM	D1	D2	L	Q	T	Wt.(lbs)
3 x 1	838335	036706	9838335	059547	1.980	3.500	0.936	2.375	3.740	1.045	0.571
3 x 1-1/4	838336	036707	9838336	059639	1.965	3.500	1.255	2.350	3.970	1.040	0.619
3 x 1-1/2	838337	036708	9838337	059451	1.995	3.500	1.476	2.390	3.720	1.060	0.600
3 x 2	838338	036709	9838338	059452	1.870	3.500	1.913	2.260	3.720	1.060	0.680
3 x 2-1/2	838339	036710	9838339	059453	1.750	3.500	2.290	2.095	3.845	1.440	0.461
4 x 2	838420	036711	9838420	059454	2.280	4.500	1.913	2.655	4.900	1.710	1.076
4 x 2-1/2	838421	036712	9838421	059640	2.260	4.500	2.290	2.640	4.730	1.560	1.100
4 x 3	838422	036713	9838422	059455	2.330	4.500	2.864	2.655	4.895	2.050	0.944
6 x 2	838528	036714	-	-	3.485	6.625	1.913	4.000	6.845	1.085	2.800
6 x 3	838530	036715	9838530	059641	3.470	6.625	2.864	4.000	6.870	1.670	2.850
6 x 4	838532	036716	9838532	059456	3.500	6.625	3.786	4.000	6.860	1.760	3.000

90° ELBOWS

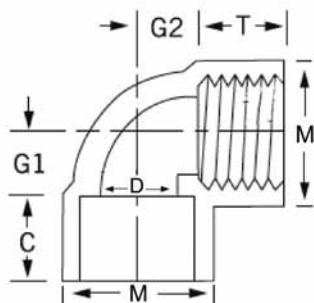
Schedule 80
90° ELBOWS
Soc x Soc



SCHEDULE 80 FITTINGS

Nom. Pipe Size	Xirtec		Corzan		CRITICAL DIMENSIONS				
	Univ. Part No.	IPEX Part No.	Univ. Part No.	IPEX Part No.	C	D	H	M	Wt.(lbs)
1/4 x 1/4	806002	036179	9806002	057192	0.655	0.302	1.000	0.845	0.031
3/8 x 3/8	806003	036180	9806003	059193	0.780	0.423	1.250	1.000	0.040
1/2 x 1/2	806005	036181	9806005	059194	0.890	0.524	1.445	1.215	0.086
3/4 x 3/4	806007	036182	9806007	059195	1.020	0.722	1.685	1.470	0.115
1 x 1	806010	036183	9806010	059196	1.145	0.936	1.940	1.760	0.187
1-1/4 x 1-1/4	809012	036184	9806012	059197	1.270	1.255	2.160	2.145	0.289
1-1/2 x 1-1/2	806015	036185	9806015	059198	1.400	1.476	2.400	2.385	0.348
2 x 2	806020	036186	9806020	059199	1.525	1.913	2.805	2.955	0.617
2-1/2 x 2-1/2	806025	036187	9806025	059200	1.775	2.290	3.300	3.580	1.054
3 x 3	806030	036188	9806030	059201	1.935	2.864	3.745	4.230	1.523
4 x 4	806040	036189	9806040	059202	2.265	3.786	4.625	5.345	2.619
6 x 6	806060	036191	9806060	059203	3.025	5.709	6.650	7.615	7.295
8 x 8	806080	036192	9806080	059204	4.125	7.565	8.600	9.775	14.733
10 x 10	806100	036864	9806100	059085	5.500	9.493	11.315	10.780	28.740
12 x 12	806120	036865	9806120	059086	6.500	11.294	13.385	14.200	43.901

90° ELBOWS



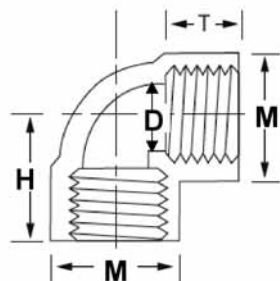
Schedule 80
90° ELBOWS
Soc x FPT

SCHEDULE 80 FITTINGS

Nom. Pipe Size	Xirtec		Corzan		CRITICAL DIMENSIONS						
	Univ. Part No.	IPEX Part No.	Univ. Part No.	IPEX Part No.	C	D	G1	G2	M	T	Wt.(lbs)
1/4 x 1/4	-	-	9807002	059612	0.625	0.302	0.345	0.345	0.845	0.625	0.044
3/8 x 3/8	-	-	9807003	059613	0.780	0.423	0.250	0.375	0.985	0.655	0.050
1/2 x 1/2	807005	036172	9807005	059187	0.895	0.526	0.540	0.535	1.200	0.905	0.084
3/4 x 3/4	807007	036173	9807007	059941	1.015	0.722	0.610	0.590	1.505	1.035	0.146
1 x 1	807010	036174	9807010	059188	1.155	0.936	0.785	0.785	1.760	1.150	0.209
1-1/4 x 1-1/4	807012	036175	9807012	059189	1.275	1.255	0.975	0.975	2.145	1.275	0.302
1-1/2 x 1-1/2	807015	036176	9807015	059190	1.375	1.476	1.040	1.035	2.385	1.400	0.366
2 x 2	807020	036177	9807020	059191	1.530	1.913	1.375	1.470	2.955	0.970	0.650

90° ELBOWS

Schedule 80
90° ELBOWS
FPT x FPT

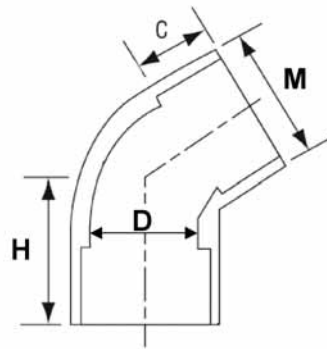


Nom. Pipe Size	Xirtec		Corzan		CRITICAL DIMENSIONS				
	Univ. Part No.	IPEX Part No.	Univ. Part No.	IPEX Part No.	D	H	M	T	Wt.(lbs)
1/4 x 1/4	808002	036197	9808002	059206	0.302	0.940	0.845	0.625	0.031
3/8 x 3/8	808003	036198	9808003	059207	0.423	1.000	1.000	0.625	0.051
1/2 x 1/2	808005	036199	9808005	059208	0.526	1.370	1.215	0.740	0.104
3/4 x 3/4	808007	036200	9808007	059209	0.722	1.615	1.470	0.825	0.148
1 x 1	808010	036201	9808010	059210	0.936	1.810	1.760	1.130	0.227
1-1/4 x 1-1/4	808012	036202	9808012	059211	1.255	1.795	2.145	0.930	0.410
1-1/2 x 1-1/2	808015	036203	9808015	059212	1.476	2.040	2.385	0.930	0.570
2 x 2	808020	036204	9808020	059213	1.913	2.370	2.955	1.095	0.648
2-1/2 x 2-1/2	808025	036205	9808025	059214	2.290	2.935	3.580	1.775	1.208
3 x 3	808030	036206	9808030	059215	2.864	3.160	4.230	1.420	1.691
4 x 4	808040	036207	9808040	059216	3.786	3.735	5.345	1.495	2.845

Note: T=the inside thread depth (bell depth)

SCHEDULE 80 FITTINGS

45° ELBOWS

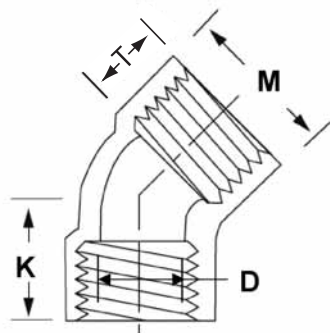


Schedule 80
45° ELBOWS
Soc x Soc

Nom. Pipe Size	Xirtec		Corzan		CRITICAL DIMENSIONS				
	Univ. Part No.	IPEX Part No.	Univ. Part No.	IPEX Part No.	C	D	H	M	Wt.(lbs)
1/4 x 1/4	817002	036142	9817002	059162	0.655	0.302	0.815	0.845	0.031
3/8 x 3/8	817003	036143	9817003	059163	0.750	0.423	0.970	1.000	0.040
1/2 x 1/2	817005	036144	9817005	059164	0.890	0.526	1.200	1.215	0.093
3/4 x 3/4	817007	036145	9817007	059165	1.020	0.722	1.350	1.470	0.099
1 x 1	817010	036146	9817010	059166	1.150	0.936	1.475	1.760	0.181
1-1/4 x 1-1/4	817012	036147	9817012	059167	1.265	1.255	1.660	2.145	0.220
1-1/2 x 1-1/2	817015	036148	9817015	059168	1.385	1.476	1.790	2.385	0.291
2 x 2	817020	036149	9817020	059169	1.505	1.913	2.000	2.955	0.408
2-1/2 x 2-1/2	817025	036150	9817025	059170	1.760	2.290	2.480	3.580	0.855
3 x 3	817030	036151	9817030	059171	1.885	2.864	2.700	4.230	1.113
4 x 4	817040	036152	9817040	059172	2.260	3.786	3.095	5.345	2.240
6 x 6	817060	036154	9817060	059173	3.030	5.709	4.575	7.615	5.190
8 x 8	817080	036155	9817080	059174	4.040	7.565	6.250	9.775	10.906
10 x 10	817100	036862	9817100	059087	5.500	9.493	8.065	10.780	19.680
12 x 12	817020	036863	9817120	059088	6.500	11.294	9.580	14.200	32.701

45° ELBOWS

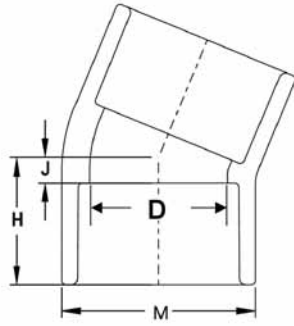
Schedule 80
45° ELBOWS
FPT x FPT



Nom. Pipe Size	Xirtec		Corzan		CRITICAL DIMENSIONS				
	Univ. Part No.	IPEX Part No.	Univ. Part No.	IPEX Part No.	D	K	M	T	Wt.(lbs)
1/4 x 1/4	819002	036160	9819002	059176	0.302	0.780	0.845	0.595	0.031
3/8 x 3/8	819003	036161	9819003	059177	0.423	0.815	1.000	0.815	0.040
1/2 x 1/2	819005	036162	9819005	059178	0.526	0.995	1.215	0.675	0.079
3/4 x 3/4	819007	036163	9819007	059179	0.722	1.195	1.470	0.675	0.115
1 x 1	819010	036164	9819010	059180	0.936	1.380	1.760	0.845	0.159
1-1/4 x 1-1/4	819012	036165	9819012	059181	1.255	1.620	2.145	0.895	0.249
1-1/2 x 1-1/2	819015	036166	9819015	059182	1.476	1.810	2.385	0.895	0.333
2 x 2	819020	036167	9819020	059183	1.913	2.060	2.955	0.915	0.459
2-1/2 x 2-1/2	819025	036168	9819025	059184	2.290	2.665	3.580	1.455	1.140
3 x 3	819030	036169	9819030	059185	2.864	2.990	4.230	1.540	1.780
4 x 4	819040	036170	9819040	059186	3.786	3.495	5.345	1.600	2.710

SCHEDULE 80 FITTINGS

22.5° ELBOWS

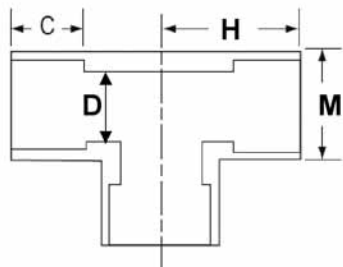


Schedule 80
22.5° ELBOWS
Soc x Soc

Nom. Pipe Size	Xirtec		Corzan		CRITICAL DIMENSIONS				
	Univ. Part No.	IPEX Part No.	Univ. Part No.	IPEX Part No.	D	H	J	M	Wt.(lbs)
2 x 2	816020	036134	9816020	059614	1.913	1.875	0.440	2.955	0.379
3 x 3	816030	036135	9816030	059615	2.864	2.405	0.565	4.230	0.970
4 x 4	816040	036136	9816040	059616	3.786	2.875	0.625	5.345	1.671

TEES

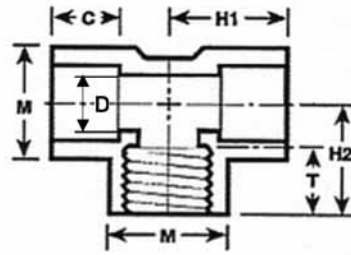
Schedule 80
TEE
Soc x Soc x Soc



SCHEDULE 80 FITTINGS

Nom. Pipe Size	Xirtec		Corzan		CRITICAL DIMENSIONS				
	Univ. Part No.	IPEX Part No.	Univ. Part No.	IPEX Part No.	C	D	H	M	Wt.(lbs)
1/4 x 1/4 x 1/4	801002	036768	9801002	059479	0.655	0.302	0.970	0.845	0.040
3/8 x 3/8 x 3/8	801003	036769	9801003	059480	0.780	0.423	1.250	0.985	0.060
1/2 x 1/2 x 1/2	801005	036770	9801005	059481	0.895	0.526	1.405	1.240	0.115
3/4 x 3/4 x 3/4	801007	036771	9801007	059482	1.015	0.722	1.595	1.415	0.159
1 x 1 x 1	801010	036772	9801010	059483	1.145	0.936	1.845	1.750	0.251
1-1/4 x 1-1/4 x 1-1/4	801012	036773	9801012	059484	1.270	1.255	2.155	2.350	0.381
1-1/2 x 1-1/2 x 1-1/2	801015	036774	9801015	059485	1.395	1.476	2.410	2.405	0.498
2 x 2 x 2	801020	036775	9801020	059486	1.520	1.913	2.800	2.895	0.882
2-1/2 x 2-1/2 x 2-1/2	801025	036776	9801025	059487	1.775	2.290	3.280	3.570	1.380
3 x 3 x 3	801030	036777	9801030	059488	1.900	2.864	3.720	4.200	2.046
4 x 4 x 4	801040	036778	9801040	059489	2.270	3.786	4.595	5.280	3.684
6 x 6 x 6	801060	036780	9801060	059490	3.030	5.709	6.530	7.575	9.555
8 x 8 x 8	801080	036781	9801080	059491	4.130	7.565	8.625	9.810	19.041
10 x 10 x 10	801100	036866	9801100	059062	5.500	9.493	11.250	12.000	35.400
12 x 12 x 12	801120	036876	9801120	059084	6.500	11.294	13.385	14.200	54.450

TEES



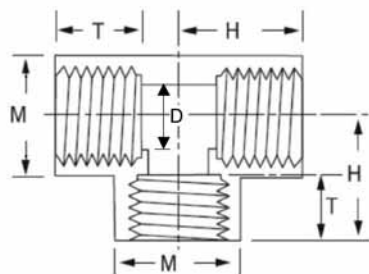
Schedule 80
TEE
Soc x Soc x FPT

SCHEDULE 80 FITTINGS

Nom. Pipe Size	Xirtec		Corzan		CRITICAL DIMENSIONS						
	Univ. Part No.	IPEX Part No.	Univ. Part No.	IPEX Part No.	C	D	H1	H2	M	T	Wt.(lbs)
1/2 x 1/2 x 1/2	802005	036828	9802005	059942	0.905	0.526	1.375	1.375	1.240	0.905	0.139
3/4 x 3/4 x 3/4	802007	036829	9802007	059943	1.030	0.722	1.615	1.615	1.415	1.030	0.205
1 x 1 x 1	802010	036830	9802010	059518	1.150	0.936	1.815	1.815	1.750	1.150	0.295
2 x 2 x 2	802020	036832	9802020	059089	1.500	1.913	2.405	2.405	2.895	0.970	0.700

TEES

Schedule 80
TEE
FPT x FPT x FPT

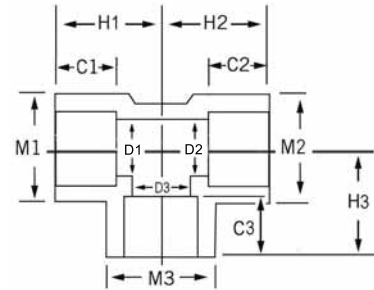


SCHEDULE 80 FITTINGS

Nom. Pipe Size	Xirtec		Corzan		CRITICAL DIMENSIONS				
	Univ. Part No.	IPEX Part No.	Univ. Part No.	IPEX Part No.	D	H	M	T	Wt.(lbs)
1/4 x 1/4 x 1/4	805002	036817	9805002	059507	0.302	0.970	0.845	0.655	0.051
3/8 x 3/8 x 3/8	805003	036818	9805003	059508	0.423	1.030	0.985	0.625	0.071
1/2 x 1/2 x 1/2	805005	036819	9805005	059509	0.526	1.135	1.240	0.905	0.148
3/4 x 3/4 x 3/4	805007	036820	9805007	059510	0.722	1.605	1.415	1.020	0.216
1 x 1 x 1	805010	036821	9805010	059511	0.936	1.815	1.750	1.170	0.326
1-1/4 x 1-1/4 x 1-1/4	805012	036822	9805012	059512	1.255	1.885	2.350	1.000	0.439
1-1/2 x 1-1/2 x 1-1/2	805015	036823	9805015	059513	1.476	2.055	2.405	0.985	0.602
2 x 2 x 2	805020	036824	9805020	059514	1.913	2.370	2.895	1.040	0.875
2-1/2 x 2-1/2 x 2-1/2	805025	036825	9805025	059515	2.290	2.965	3.570	1.450	1.601
3 x 3 x 3	805030	036826	9805030	059516	2.864	3.180	3.200	1.425	2.022
4 x 4 x 4	805040	036827	9805040	059517	3.786	3.720	5.280	1.515	3.768

REDUCING TEE

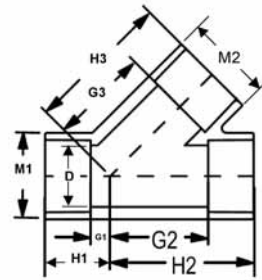
Schedule 80
TEE
Soc x Soc x Soc - Reducing



Nom. Pipe Size	Xirtec		Corzan		CRITICAL DIMENSIONS												
	Univ. Part No.	IPEX Part No.	Univ. Part No.	IPEX Part No.	C1	C2	C3	D1	D2	D3	H1	H2	H3	M1	M2	M3	Wt.(lbs)
3/4 x 3/4 x 1/2	801101	036786	9801101	059492	1.030	1.030	0.890	0.722	0.722	0.526	1.665	1.665	1.465	1.415	1.415	1.240	0.148
3/4 x 3/4 x 1	801102	036787	-	-	1.130	1.130	1.300	0.722	0.722	0.936	1.665	1.665	1.930	1.415	1.415	1.750	0.209
1 x 3/4 x 3/4	-	036790	-	-	1.300	1.115	1.300	0.936	0.722	0.722	1.880	1.780	1.780	1.750	1.415	1.415	0.209
1 x 3/4 x 1	801126	036791	-	-	1.300	1.300	1.130	0.936	0.722	0.936	1.880	1.880	1.780	1.750	1.415	1.750	0.220
1 x 1 x 1/2	801130	036788	9801130	059493	1.125	1.125	0.875	0.936	0.936	0.526	1.720	1.720	1.750	1.750	1.750	1.240	0.201
1 x 1 x 3/4	801131	036789	9801131	059494	1.315	1.315	1.025	0.936	0.936	0.722	1.930	1.930	1.735	1.750	1.750	1.415	0.243
1-1/4 x 1 x 3/4	801157	036792	-	-	1.250	1.250	1.000	1.255	0.936	0.722	1.940	1.875	2.065	2.350	1.750	1.415	0.300
1-1/4 x 1-1/4 x 3/4	801167	036793	-	-	1.460	1.460	1.150	1.255	1.255	0.722	2.210	2.210	2.020	2.350	2.350	1.415	0.353
1-1/4 x 1 x 1	-	-	9801158	059601	1.250	1.250	1.125	1.255	0.936	0.936	2.125	2.125	1.905	2.350	1.750	1.750	0.353
1-1/4 x 1-1/4 x 1	801168	036794	9801168	059602	1.280	1.250	0.875	1.255	1.255	0.936	2.155	2.125	2.440	2.350	2.350	1.750	0.375
1-1/4 x 1 x 1-1/4	-	-	9801159	059495	1.250	1.250	1.125	1.255	0.936	1.255	2.190	2.125	2.155	2.350	1.750	2.350	0.366
1-1/2 x 1-1/4 x 1	-	-	9801202	059603	1.375	1.375	1.125	1.476	1.255	0.936	2.250	2.250	2.345	2.405	2.350	1.750	0.419
1-1/2 x 1-1/2 x 3/4	801210	036795	9801210	059496	1.600	1.600	1.150	1.476	1.476	0.722	2.250	2.250	2.210	2.405	2.405	1.415	0.397
1-1/2 x 1-1/2 x 1	801211	036796	9801211	059497	1.250	1.250	1.125	1.476	1.476	0.936	2.190	2.125	2.155	2.405	2.405	1.750	0.454
2 x 2 x 1/2	801247	036797	9801247	059498	1.405	1.405	1.145	1.913	1.913	0.526	2.305	2.305	2.160	2.895	2.895	1.240	0.631
2 x 2 x 3/4	801248	036798	9801248	059499	1.500	1.500	0.875	1.913	1.913	0.722	2.095	2.095	2.315	2.895	2.895	1.415	0.650
2 x 2 x 1	801249	036799	9801249	059500	1.500	1.500	1.000	1.913	1.913	0.936	2.190	2.190	2.440	2.895	2.895	1.750	0.593
2 x 2 x 1-1/2	801251	036800	9801251	059501	1.530	1.530	1.140	1.913	1.913	1.476	2.400	2.400	2.430	2.895	2.895	2.405	0.705
2-1/2 x 2-1/2 x 1	-	-	9801289	059604	1.815	1.815	1.125	2.290	2.290	0.936	2.625	2.625	2.940	3.570	3.570	1.750	1.036
2-1/2 x 2-1/2 x 1-1/4	-	-	9801290	059605	1.750	1.750	1.250	2.290	2.290	1.255	2.815	2.815	3.000	3.570	3.570	2.350	1.102
2-1/2 x 2-1/2 x 1-1/2	-	-	9801291	059606	1.780	1.780	1.375	2.290	2.290	1.476	2.940	2.940	3.125	3.570	3.570	2.405	1.213
2-1/2 x 2-1/2 x 2	-	-	9801292	059607	1.750	1.750	1.500	2.290	2.290	1.913	3.155	3.155	3.220	3.570	3.570	2.895	1.411
3 x 3 x 2	801338	036802	9801338	059502	1.530	1.530	1.380	2.864	2.864	1.913	2.740	2.740	2.660	4.200	4.200	2.895	1.598
3 x 3 x 2-1/2	801339	036803	9801339	059508	1.990	1.530	1.525	2.864	2.864	2.290	3.450	3.450	3.310	4.200	4.200	3.570	1.962
4 x 4 x 2	801420	036804	9801420	059504	2.260	2.260	1.525	3.786	3.786	1.913	4.460	4.460	4.085	5.280	5.280	2.895	3.086
4 x 4 x 3	801422	036805	9801422	059505	2.260	2.260	1.910	3.786	3.786	2.864	4.350	4.350	4.220	5.280	5.280	4.200	3.040
6 x 6 x 3	801530	036807	9801530	059609	2.975	2.975	1.875	5.709	5.709	2.864	5.805	5.805	5.630	7.575	7.575	4.200	6.370
6 x 6 x 4	801532	036808	9801532	059506	3.025	3.025	2.275	5.709	5.709	3.786	5.825	5.825	5.750	7.575	7.575	5.280	7.357
8 x 8 x 6	801585	036810	9801585	059567	4.120	4.120	3.060	7.565	7.565	5.709	7.720	7.720	7.625	9.810	9.810	7.575	15.000
10 x 10 x 6	-	-	9801626	059610	5.500	5.500	3.000	9.493	9.493	5.709	9.375	9.375	8.845	12.065	12.065	7.575	26.037

WYE

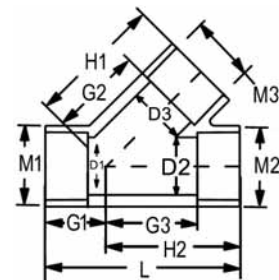
Schedule 80
45° WYE
Soc x Soc x Soc



Nom. Pipe Size	Xirtec		Corzan		CRITICAL DIMENSIONS								
	Univ. Part No.	IPEX Part No.	Univ. Part No.	IPEX Part No.	D	G1	G2	G3	H1	H2	H3	M	Wt.(lbs)
1/2 x 1/2 x 1/2	-	-	9875005	059652	0.526	0.265	1.390	1.200	1.345	2.400	2.400	1.380	0.130
3/4 x 3/4 x 3/4	-	-	9875007	059653	0.722	0.265	1.390	1.200	1.345	2.400	2.400	1.380	0.190
1 x 1 x 1	-	-	9875010	059654	0.936	1.110	1.700	1.700	1.500	2.895	2.895	1.695	0.397
1-1/4 x 1-1/4 x 1-1/4	-	-	9875012	059655	1.255	0.405	2.155	2.155	1.735	3.360	3.360	2.060	0.551
1-1/2 x 1-1/2 x 1-1/2	875015	036854	9875015	059553	1.476	0.690	2.375	2.405	2.065	3.750	3.750	2.345	0.690
2 x 2 x 2	875020	036855	9875020	059536	1.913	0.845	3.030	3.030	2.345	4.530	4.530	2.875	1.199
3 x 3 x 3	875030	036856	9875030	059537	2.864	1.070	4.440	3.585	2.945	6.315	5.450	4.115	2.599
4 x 4 x 4	875040	036857	9875040	059538	3.786	1.320	5.675	4.600	3.570	7.925	6.850	5.190	4.451
6 x 6 x 6	875060	036858	9875060	059539	5.709	1.875	8.305	6.745	4.875	11.300	9.740	7.510	12.000
8 x 8 x 8	875080	036859	-	-	7.565	7.220	15.280	15.530	11.470	19.530	19.530	9.690	25.240

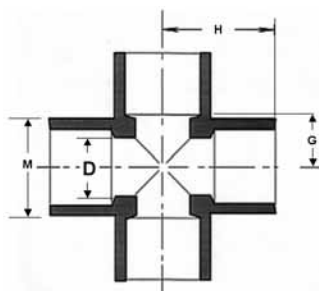
REDUCING WYE

Schedule 80
45° WYE
Soc x Soc x Soc - Reducing



Nom. Pipe Size	Xirtec		Corzan		CRITICAL DIMENSIONS												
	Univ. Part No.	IPEX Part No.	Univ. Part No.	IPEX Part No.	D1	D2	D3	G1	G2	G3	H1	H2	L	M1	M2	M3	Wt.(lbs)
6 x 6 x 4	875532	036861	-	-	5.709	5.709	3.786	2.560	8.000	7.125	10.250	10.125	12.690	7.605	7.605	5.400	9.140

Crosses



Schedule 80

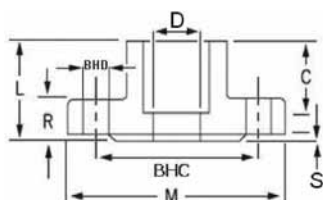
CROSSES

Soc x Soc x Soc x Soc

Nom. Pipe Size	Xirtec		Corzan		CRITICAL DIMENSIONS				
	Univ. Part No.	IPEX Part No.	Univ. Part No.	IPEX Part No.	D	G	H	M	Wt.(lbs)
$1/4 \times 1/4 \times 1/4 \times 1/4$	-	-	9820002	059620	0.300	0.410	1.030	0.850	0.066
$1/2 \times 1/2 \times 1/2 \times 1/2$	820005	036116	9820005	059154	0.526	0.565	1.470	1.510	0.126
$3/4 \times 3/4 \times 3/4 \times 3/4$	820007	036117	9820007	059155	0.722	0.610	1.640	1.710	0.187
1 x 1 x 1 x 1	820010	036118	9820010	059156	0.936	0.955	2.110	2.110	0.342
$1-1/4 \times 1-1/4 \times 1-1/4 \times 1-1/4$	820012	036119	9820012	059157	1.255	1.095	2.375	2.440	0.476
$1-1/2 \times 1-1/2 \times 1-1/2 \times 1-1/2$	820015	036120	9820015	059158	1.476	1.235	2.640	2.575	0.661
2 x 2 x 2 x 2	820020	036121	9820020	059159	1.913	1.530	3.000	3.040	0.981
$2-1/2 \times 2-1/2 \times 2-1/2 \times 2-1/2$	820025	036122	9820025	059018	2.290	1.750	3.440	3.350	1.687
3 x 3 x 3 x 3	820030	036123	9820030	059160	2.864	2.095	3.970	4.110	2.590
4 x 4 x 4 x 4	820040	036124	9820040	059161	3.786	2.625	4.875	5.250	5.201

Flanges

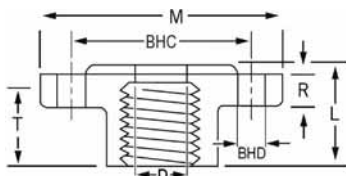
Schedule 80
FLANGE
One Piece Soc



Nom. Pipe Size	Xirtec		Corzan		CRITICAL DIMENSIONS									
	Univ. Part No.	IPEX Part No.	Univ. Part No.	IPEX Part No.	BHC	BHD	BHN	C	D	L	M	R	S	Wt.(lbs)
1/2	851005	036223	9851005	059228	2.375	0.630	4.000	0.915	0.526	1.090	3.500	0.470	0.000	0.194
3/4	851007	036224	9851007	059229	2.750	0.630	4.000	1.015	0.722	1.225	3.880	0.525	0.050	0.310
1	851010	036225	9851010	059230	3.125	0.630	4.000	1.135	0.936	1.345	4.250	0.585	0.050	0.440
1-1/4	851012	036226	9851012	059231	3.500	0.620	4.000	1.255	1.255	1.465	4.620	0.650	0.050	0.461
1-1/2	851015	036227	9851015	059232	3.875	0.625	4.000	1.385	1.476	1.585	5.000	0.730	0.050	0.710
2	851020	036228	9851020	059233	4.750	0.745	4.000	1.525	1.913	1.755	6.000	0.820	0.065	0.895
2-1/2	851025	036229	9851025	059234	5.500	0.745	4.000	1.750	2.290	1.960	7.000	0.900	0.065	1.630
3	851030	036230	9851030	059235	6.000	0.700	4.000	1.920	2.864	2.125	7.500	1.070	0.080	1.982
4	851040	036231	9851040	059236	7.500	0.745	8.000	2.240	3.786	2.475	9.000	1.115	0.040	2.730
5	851050	036232	-	-	8.500	8.880	8.000	3.030	4.768	3.250	10.175	1.040	0.040	3.000
6	851060	036233	9851060	059238	9.560	0.965	8.000	3.120	5.709	3.500	11.000	1.350	0.040	4.060
8	851080	036234	9851080	059239	11.705	0.880	8.000	4.000	7.565	4.575	13.580	1.500	0.045	7.630

Note: BHN = Bolt Hole Numbers

Schedule 80
FLANGE
One Piece FPT



Nom. Pipe Size	Xirtec		Corzan		CRITICAL DIMENSIONS								
	Univ. Part No.	IPEX Part No.	Univ. Part No.	IPEX Part No.	BHC	BHD	BHN	D	L	M	R	T	Wt.(lbs)
1/2	852005	036240	9852005	059240	2.375	0.640	4.000	0.526	1.010	3.500	0.470	0.805	0.196
3/4	852007	036241	9852007	059421	2.750	0.640	4.000	0.722	1.010	3.880	0.525	0.810	0.267
1	852010	036242	9852010	059242	3.125	0.640	4.000	0.936	1.175	4.250	0.590	0.975	0.450
1-1/4	852012	036243	9852012	059243	3.500	0.625	4.000	1.254	1.215	4.620	0.655	1.010	0.483
1-1/2	852015	036244	9852015	059244	3.875	0.625	4.000	1.476	1.190	5.000	0.735	0.990	0.680
2	852020	036245	9852020	059245	4.750	0.750	4.000	1.913	1.250	6.000	0.810	1.035	0.873
2-1/2	852025	036246	9852025	059246	5.500	0.750	4.000	2.290	1.585	7.000	0.900	1.355	1.650
3	852030	036247	9852030	059247	6.000	0.755	4.000	2.864	1.700	7.500	0.900	1.460	1.810
4	852040	036248	9852040	059248	7.500	0.755	8.000	3.786	1.800	9.000	1.095	1.560	2.482
6	852060	036249	9852060	059249	9.500	0.880	8.000	5.709	3.500	11.000	1.270	3.050	7.690

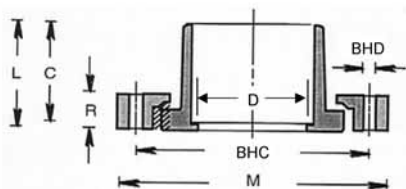
Note: BHN = Bolt Hole Numbers

Flanges

Schedule 80

FLANGE

Van Stone Heavy Duty Soc
with Fibre Loc Ring

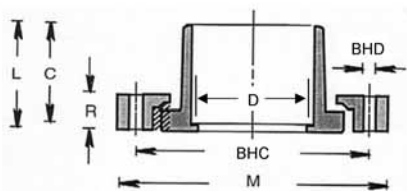


Nom. Pipe Size	Xirtec		Corzan		CRITICAL DIMENSIONS								
	Univ. Part No.	IPEX Part No.	Univ. Part No.	IPEX Part No.	BHC	BHD	BHN	C	D	L	M	R	Wt.(lbs)
1/2	-	-	9854005	059262	2.375	0.500	4.000	0.875	0.526	1.030	1.220	0.530	0.200
3/4	-	-	9854007	059263	2.750	0.500	4.000	1.000	0.722	1.125	1.440	0.565	0.270
1	-	-	9854010	059264	3.125	0.500	4.000	1.125	0.936	1.280	1.750	0.625	0.370
1-1/4	-	-	9854012	059265	3.500	0.500	4.000	1.250	1.255	1.405	2.155	0.690	0.441
1-1/2	854015HD	036323	9854015	059266	3.870	0.620	4.000	1.410	1.476	1.810	5.000	0.995	0.560
2	854020HD	036324	9854020	059267	4.740	0.745	4.000	1.525	1.913	2.010	6.000	1.135	0.850
2-1/2	-	-	9854025	059268	5.430	0.700	4.000	1.950	2.290	2.005	6.950	0.965	1.400
3	854030HD	036326	9854030	059269	6.000	0.700	4.000	1.890	2.864	2.055	7.500	0.895	1.468
4	854040HD	036416	9854040	059270	7.500	0.760	8.000	2.295	3.786	2.535	9.000	1.090	2.624
6	854060HD	036417	9854060	059271	9.500	0.900	8.000	3.025	5.709	3.200	11.000	1.220	4.540
8	854080HD	036418	9854080	059272	11.750	0.895	8.000	4.015	7.565	4.325	13.500	1.500	6.690
10	854100HD	036419	9854100	059273	14.250	1.030	12.000	5.250	9.493	5.560	16.000	1.810	11.881
12	854120HD	036429	9854120	059569	16.875	0.980	12.000	6.375	11.294	6.710	19.000	1.940	16.780
14	854140HD	036358	-	-	18.750	1.085	12.000	6.750	12.412	7.510	21.000	2.750	26.544
16	854160HD	036359	9854160	059360	21.250	2.215	16.000	8.000	14.224	8.375	24.000	2.750	37.115

Note: BHN = Bolt Hole Numbers

Flanges

Schedule 80
FLANGE
Van Stone Soc with
PVC Ring



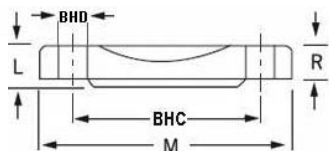
SCHEDULE 80 FITTINGS

Nom. Pipe Size	Xirtec		Corzan		CRITICAL DIMENSIONS								
	Univ. Part No.	IPEX Part No.	Univ. Part No.	IPEX Part No.	BHC	BHD	BHN	C	D	L	M	R	Wt.(lbs)
1/2	854005	036344	-	-	2.380	0.620	4.000	0.870	0.526	1.040	3.505	0.500	0.190
3/4	854007	036345	-	-	2.750	0.620	4.000	1.000	0.722	1.135	3.880	0.560	0.240
1	854010	035346	-	-	3.120	0.620	4.000	1.125	0.936	1.260	4.240	0.645	0.379
1-1/4	854012	036347	-	-	3.500	0.620	4.000	1.250	1.255	1.390	4.610	0.650	0.460
1-1/2	854015	036348	-	-	3.870	0.620	4.000	1.410	1.476	1.810	5.000	0.995	0.560
2	854020	036349	-	-	4.740	0.745	4.000	1.525	1.913	2.010	6.000	1.135	0.850
2-1/2	854025	036350	-	-	5.500	0.750	4.000	1.760	2.290	2.005	6.965	0.960	1.369
3	854030	036351	-	-	6.000	0.700	4.000	1.890	2.864	2.055	7.500	0.895	1.448
4	854040	036352	-	-	7.500	0.760	8.000	2.295	3.786	2.535	9.000	1.090	2.562
5	854050	035353	-	-	8.500	0.880	8.000	2.650	4.768	2.980	9.100	1.140	3.230
6	854060	036354	-	-	9.500	0.900	8.000	3.025	5.709	3.200	11.000	1.220	4.540
8	854080	036355	-	-	11.750	0.895	8.000	4.015	7.565	4.325	13.500	1.500	6.690
10	854100	036356	-	-	14.250	1.030	12.000	5.250	9.493	5.560	16.000	1.810	11.690
12	854120	036357	-	-	16.875	0.980	12.000	6.375	11.294	6.710	19.000	1.940	16.780

Note: BHN = Bolt Hole Numbers

Flanges

Schedule 80
FLANGE
Blind - One Piece

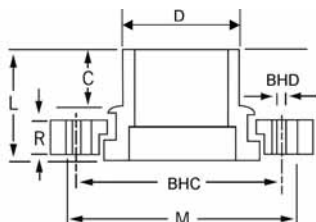


Nom. Pipe Size	Xirtec		Corzan		CRITICAL DIMENSIONS						
	Univ. Part No.	IPEX Part No.	Univ. Part No.	IPEX Part No.	BHC	BHD	BHN	L	M	R	Wt.(lbs)
1/2	853005	036250	9853005	059250	2.380	0.630	4.000	0.520	3.500	0.470	0.185
3/4	853007	036251	9853007	059251	2.765	0.640	4.000	0.590	3.880	0.525	0.251
1	853010	036252	9853010	059252	3.125	0.645	4.000	0.635	4.250	0.590	0.450
1-1/4	853012	036253	9853012	059253	3.505	0.630	4.000	0.720	4.620	0.660	0.370
1-1/2	853015	036254	9853015	059254	3.895	0.625	4.000	0.820	5.000	0.745	0.660
2	853020	036255	9853020	059255	4.765	0.750	4.000	0.885	6.000	0.850	0.884
2-1/2	853025	036256	9853025	059256	5.500	0.740	4.000	0.960	7.000	0.900	1.610
3	853030	036257	9853030	059257	6.015	0.785	4.000	0.960	7.500	0.905	1.560
4	853040	036258	9853040	059258	7.515	0.785	4.000	1.150	9.000	1.105	2.582
6	853060	036259	9853060	059259	9.505	0.915	4.000	1.270	11.000	1.220	4.134
8	853080	036260	9853080	059260	11.755	0.910	4.000	1.560	13.500	1.500	6.740
10	-	-	9833100	059665	14.125	0.990	12.000	1.755	15.875	1.670	11.800
12	-	-	9853120	059666	17.000	0.875	12.000	1.800	19.000	1.690	17.580

Note: BHN = Bolt Hole Numbers

Flanges

Schedule 80
FLANGE
Van Stone Spig



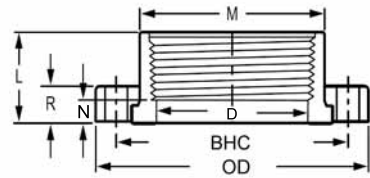
SCHEDULE 80 FITTINGS

Nom. Pipe Size	Xirtec		Corzan		CRITICAL DIMENSIONS								
	Univ. Part No.	IPEX Part No.	Univ. Part No.	IPEX Part No.	BHC	BHD	BHN	C	D	L	M	R	Wt.(lbs)
1/2	856005	036374	9856005	059274	2.330	0.620	4.000	0.990	0.840	1.750	3.505	0.500	0.201
3/4	856007	036375	9856007	059275	2.750	0.620	4.000	1.005	1.050	1.900	3.870	0.550	0.269
1	856010	036376	9856010	059276	3.120	0.620	4.000	1.140	1.315	2.130	4.240	0.635	0.410
1-1/4	856012	036377	9856012	059277	3.500	0.620	4.000	1.355	1.660	2.310	4.600	0.655	0.500
1-1/2	856015	036378	9856015	059278	3.880	0.620	4.000	1.560	1.900	2.605	5.040	0.690	0.617
2	856020	036379	9856020	059279	4.750	0.750	4.000	1.525	2.375	2.825	5.950	0.820	0.977
2-1/2	856025	036380	9856025	059280	5.500	0.750	4.000	1.790	2.875	3.065	6.965	0.955	1.290
3	856030	036381	9856030	059281	6.000	0.750	4.000	1.890	3.500	3.120	7.500	0.900	1.896
4	856040	036382	9856040	059282	7.500	0.750	8.000	2.290	4.500	3.660	9.000	1.110	2.637
6	856060	036383	9856060	059283	9.500	0.875	8.000	3.010	6.625	4.460	11.000	1.220	4.620
8	856080	036384	9856080	059570	11.750	0.875	8.000	4.015	8.625	5.250	13.500	1.505	7.950
10	856100	036995	9856100	059663	14.250	0.875	12.000	5.750	10.750	8.000	16.000	1.625	16.090
12	856120	036996	9856120	059664	17.000	0.875	12.000	6.315	12.750	8.500	19.000	1.625	22.700

Note: BHN = Bolt Hole Numbers

Flanges

Schedule 80
FLANGE
Van Stone FPT

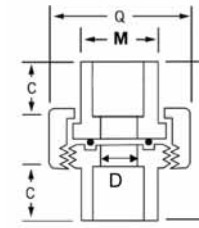


Nom. Pipe Size	Xirtec		Corzan		CRITICAL DIMENSIONS									
	Univ. Part No.	IPEX Part No.	Univ. Part No.	IPEX Part No.	BHC	BHD	BHN	D	L	M	N	OD	R	Wt. (lbs)
1/2	855005	036385	9855005	059656	2.375	0.500	4.000	0.526	1.030	1.220	0.280	2.500	0.530	0.190
3/4	855007	036386	9855007	059657	2.750	0.500	4.000	0.722	1.155	1.375	0.405	3.875	0.565	0.249
1	855010	036387	9855010	059658	3.125	0.500	4.000	0.936	1.250	1.750	0.315	4.250	0.625	0.390
1-1/4	855012	036388	9855012	059284	3.500	0.500	4.000	1.255	1.375	2.125	0.405	4.625	0.690	0.421
1-1/2	855015	036389	9855015	059659	3.875	0.500	4.000	1.476	1.470	2.440	0.405	5.000	0.750	0.560
2	855020	036390	9855020	059660	4.750	0.625	4.000	1.913	1.565	2.970	0.500	6.000	0.815	0.870
2-1/2	855025	036391	9855025	059661	5.500	0.625	4.000	2.290	2.000	3.565	0.440	7.000	1.000	1.220
3	855030	036392	9855030	059285	6.000	0.750	4.000	2.864	2.125	4.250	0.500	7.500	1.065	1.730
4	855040	036393	9855040	059662	7.500	0.750	8.000	3.786	2.065	5.250	0.375	9.000	1.250	2.260

Note: BHN = Bolt Hole Numbers

Unions

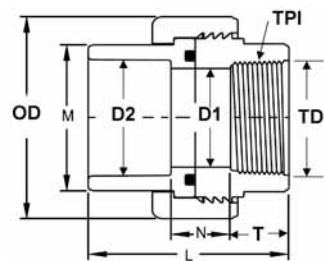
Schedule 80
UNIONS
Soc x Soc - Viton O-Rings



Nom. Pipe Size	Xirtec		Corzan		CRITICAL DIMENSIONS					
	Univ. Part No.	IPEX Part No.	Univ. Part No.	IPEX Part No.	C	D	L	M	Q	Wt.(lbs)
1/4 x 1/4	857002	036833	9857002	059519	0.625	0.302	1.925	0.855	1.650	0.090
3/8 x 3/8	857003	036834	-	-	0.750	0.423	2.140	1.000	1.785	0.110
1/2 x 1/2	857005	036835	9857005	059520	0.895	0.526	2.305	1.200	1.985	0.150
3/4 x 3/4	857007	036836	9857007	059521	1.010	0.722	2.590	1.415	2.370	0.260
1 x 1	857010	036837	9857010	059522	1.150	0.936	2.890	1.755	2.680	0.370
1-1/4 x 1-1/4	857012	036838	9857012	059523	1.270	1.255	3.385	2.160	3.095	0.500
1-1/2 x 1-1/2	857015	036839	9857015	059524	1.385	1.476	3.840	2.480	3.835	0.600
2 x 2	857020	036840	9857020	059525	1.510	1.913	4.150	2.945	4.805	0.960
3 x 3	857030	036842	9857030	059526	1.890	2.864	4.970	4.255	6.920	2.330
4 x 4	857040	036843	9857040	059550	2.250	3.786	5.920	5.280	7.125	3.699

Unions

Schedule 80
UNIONS
Soc x FPT - Viton O-Rings



Nom. Pipe Size	Xirtec		Corzan		CRITICAL DIMENSIONS									
	Univ. Part No.	IPEX Part No.	Univ. Part No.	IPEX Part No.	D1	D2	L	M	N	OD	T	TD	TPI	Wt.(lbs)
1/2 x 1/2	859005	036410	-	-	0.526	0.840	2.095	1.200	0.470	1.970	0.750	0.840	14.000	0.160
3/4 x 3/4	859007	036411	-	-	0.722	1.050	2.375	1.415	0.565	2.500	0.815	1.050	14.000	0.260
1 x 1	859010	036412	-	-	0.936	1.315	2.565	1.755	0.405	2.875	1.065	1.315	11.500	0.359
1-1/4 x 1-1/4	859012	036413	-	-	1.255	1.660	2.875	2.160	0.625	3.315	1.000	1.660	11.500	0.500
1-1/2 x 1-1/2	859015	036414	-	-	1.476	1.900	3.125	2.480	0.845	3.565	0.970	1.900	11.500	0.630
2 x 2	859020	036415	-	-	1.913	2.375	3.625	2.945	1.065	4.190	0.970	2.375	11.500	0.970
3 x 3	859030	236010	-	-	2.864	3.500	5.065	4.255	1.500	5.750	1.625	3.500	8.000	2.359
4 x 4	859040	236011	-	-	3.786	4.500	5.875	5.280	1.875	7.065	1.750	4.500	8.000	3.814

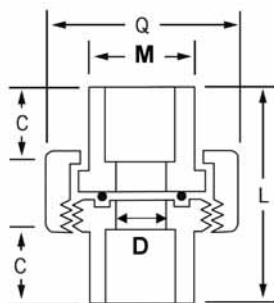
Note: TPI = Threads Per Inch

Unions

Schedule 80

UNIONS

Soc x Soc - EDPM O-Rings



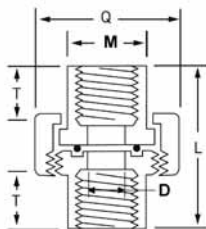
Nom. Pipe Size	Xirtec		Corzan		CRITICAL DIMENSIONS					
	Univ. Part No.	IPEX Part No.	Univ. Part No.	IPEX Part No.	C	D	L	M	Q	Wt.(lbs)
1/4 x 1/4	897002	236004	-	-	0.625	0.302	1.940	0.855	1.655	0.090
3/8 x 3/8	897003	236005	-	-	0.750	0.423	2.155	1.000	1.780	0.110
1/2 x 1/2	897005	036956	9897005	059571	0.890	0.526	2.310	1.200	1.980	0.150
3/4 x 3/4	897007	036964	9897007	059572	1.015	0.722	2.570	1.415	2.345	0.260
1 x 1	897010	036980	9897010	059573	1.135	0.936	2.860	1.755	2.665	0.370
1-1/4 x 1-1/4	897012	036981	9897012	059574	1.270	1.255	3.395	2.160	3.085	0.500
1-1/2 x 1-1/2	897015	036982	9897015	059575	1.385	1.476	3.820	2.480	3.805	0.600
2 x 2	897020	036983	9897020	059576	1.515	1.913	4.185	2.945	4.805	0.960
3 x 3	897030	036984	9897030	059577	1.880	2.864	4.955	4.255	4.010	2.330
4 x 4	897040	236006	9897040	059649	2.250	3.786	5.875	5.280	7.065	3.740

Unions

Schedule 80

UNIONS

FPT x FPT - Viton O-Rings

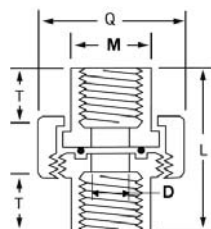


Nom. Pipe Size	Xirtec		Corzan		CRITICAL DIMENSIONS					
	Univ. Part No.	IPEX Part No.	Univ. Part No.	IPEX Part No.	D	L	M	Q	T	Wt.(lbs)
1/4 x 1/4	858002	036844	9858002	059527	0.302	1.945	0.855	1.645	0.585	0.090
3/8 x 3/8	858003	036845	-	-	0.423	2.145	1.000	1.780	0.600	0.110
1/2 x 1/2	858005	036846	9858005	059529	0.526	2.130	1.200	1.975	0.810	0.160
3/4 x 3/4	858007	036847	9858007	059530	0.722	2.180	1.415	2.360	0.825	0.280
1 x 1	858010	036848	9858010	059531	0.936	2.645	1.755	2.675	1.020	0.390
1-1/4 x 1-1/4	858012	036849	9858012	059532	1.255	3.125	2.160	3.100	1.155	0.560
1-1/2 x 1-1/2	858015	036850	9858015	059533	1.476	3.585	2.480	3.830	1.270	0.650
2 x 2	858020	036851	9858020	059534	1.913	3.890	2.945	4.805	1.380	1.050
3 x 3	858030	036852	9858030	059535	2.864	4.275	4.255	6.945	1.555	2.510
4 x 4	858040	036853	9858040	059651	3.786	5.920	5.280	7.125	2.245	3.900

Schedule 80

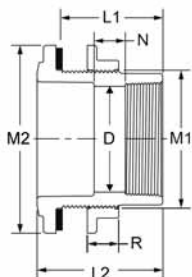
UNIONS

FPT x FPT - EDPM O-Rings



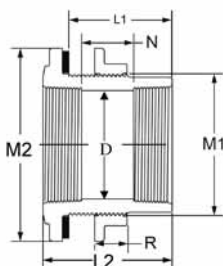
Nom. Pipe Size	Xirtec		Corzan		CRITICAL DIMENSIONS					
	Univ. Part No.	IPEX Part No.	Univ. Part No.	IPEX Part No.	D	L	M	Q	T	Wt.(lbs)
1/4 x 1/4	898002	236007	-	-	0.302	1.940	0.855	1.655	0.500	0.100
3/8 x 3/8	898003	236008	-	-	0.423	2.155	1.000	1.780	0.500	0.120
1/2 x 1/2	898005	036985	9898005	059584	0.526	2.115	1.200	1.980	0.815	0.160
3/4 x 3/4	898007	036986	9898007	059578	0.722	2.350	1.415	2.290	0.820	0.280
1 x 1	898010	036987	9898010	059579	0.936	2.650	1.755	2.665	1.015	0.317
1-1/4 x 1-1/4	898012	036988	9898012	059580	1.255	3.105	2.160	3.090	1.130	0.560
1-1/2 x 1-1/2	898015	036989	9898015	059581	1.476	3.070	2.480	3.810	1.265	0.650
2 x 2	898020	036990	9898020	059582	1.913	3.300	2.945	4.785	1.395	1.050
3 x 3	898030	036993	9898030	059583	2.864	4.260	4.255	6.915	1.545	2.510
4 x 4	898040	236009	9898040	059650	3.786	5.860	5.280	6.980	1.480	4.070

Adapters



Schedule 80
ADAPTERS – MISC
Tank - Soc x FPT

Nom. Pipe Size	Xirtec		Corzan		CRITICAL DIMENSIONS							
	Univ. Part No.	IPEX Part No.	Univ. Part No.	IPEX Part No.	D	L1	L2	M1	M2	N	R	Wt.(lbs)
1/2 x 1/2	871005	036038	-	-	0.526	2.440	2.905	1.220	2.030	1.500	0.625	0.059
3/4 x 3/4	871007	036039	-	-	0.722	2.470	2.940	1.625	2.250	1.190	0.625	0.172
1 x 1	871010	036040	-	-	0.936	2.815	3.315	1.970	2.625	1.250	0.625	0.172
1-1/4 x 1-1/4	871012	036041	-	-	1.255	2.845	3.405	2.315	3.095	1.530	0.625	0.227
1-1/2 x 1-1/2	871015	036042	-	-	1.476	2.815	3.625	2.690	3.595	1.250	0.625	0.227
2 x 2	871020	036043	-	-	1.913	3.250	4.125	3.250	4.875	1.625	0.750	0.454
3 x 3	871030	036218	-	-	2.864	4.500	5.500	4.565	6.000	2.190	1.000	0.392
4 x 4	871040	036046	-	-	3.786	4.000	5.000	5.500	7.500	1.250	1.250	3.175

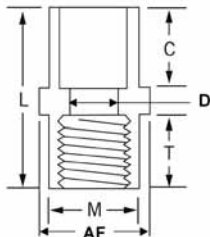


Schedule 80
ADAPTERS – MISC
Tank - FPT x FPT

Nom. Pipe Size	Xirtec		Corzan		CRITICAL DIMENSIONS							
	Univ. Part No.	IPEX Part No.	Univ. Part No.	IPEX Part No.	D	L1	L2	M1	M2	N	R	Wt.(lbs)
1/2 x 1/2	872005	036047	-	-	0.526	2.190	2.940	1.220	2.030	1.500	0.625	0.059
3/4 x 3/4	872007	036048	-	-	0.722	2.470	2.940	1.625	2.250	1.500	0.625	0.172
1 x 1	872010	036049	-	-	0.936	2.815	3.315	1.970	2.625	1.250	0.625	0.172
1-1/4 x 1-1/4	872012	036050	-	-	1.255	2.845	3.405	2.315	3.095	1.530	0.625	0.227
1-1/2 x 1-1/2	872015	036051	-	-	1.476	3.065	3.595	2.690	3.595	1.690	0.625	0.227
2 x 2	872020	036052	-	-	1.913	3.250	4.125	3.250	4.875	2.815	0.750	0.454
3 x 3	872030	036053	-	-	2.864	4.500	5.500	4.565	6.000	2.690	1.000	0.907
4 x 4	872040	036055	-	-	3.786	4.000	5.000	5.500	7.500	2.000	1.250	3.175

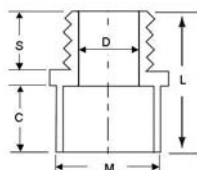
Adapters

Schedule 80
ADAPTERS
Soc x FPT



Nom. Pipe Size	Xirtec		Corzan		CRITICAL DIMENSIONS						
	Univ. Part No.	IPEX Part No.	Univ. Part No.	IPEX Part No.	AF	C	D	L	M	T	Wt.(lbs)
1/4 x 1/4	835002	036209	9835002	059217	0.820	0.635	0.302	1.320	0.820	0.595	0.020
3/8 x 3/8	835003	036210	9835003	059218	1.000	0.750	0.423	1.460	1.000	0.610	0.031
1/2 x 1/2	835005	036211	9835005	059219	1.385	0.890	0.526	1.745	1.250	0.750	0.050
3/4 x 3/4	835007	036212	9835007	059220	1.630	1.000	0.722	1.880	1.465	0.770	0.070
1 x 1	835010	036213	9835010	059221	1.955	1.130	0.936	2.180	1.780	0.950	0.154
1-1/4 x 1-1/4	835012	036214	9835012	059222	2.385	1.270	1.255	2.365	2.160	0.980	0.216
1-1/2 x 1-1/2	835015	036215	9835015	059223	2.695	1.390	1.476	2.480	2.625	0.995	0.280
2 x 2	835020	036216	9835020	059224	3.245	1.510	1.913	2.655	2.950	1.030	0.375
2-1/2 x 2-1/2	835025	036217	9835025	059225	3.830	1.770	2.290	3.355	3.540	1.405	0.602
3 x 3	835030	036218	9835030	059226	4.650	1.905	2.864	3.565	4.240	1.485	0.864
4 x 4	835040	036219	9835040	059227	5.865	2.275	3.786	4.035	5.340	1.590	1.710
6 x 6	835060	036221	-	-	7.590	3.005	5.709	5.260	7.590	2.055	3.020

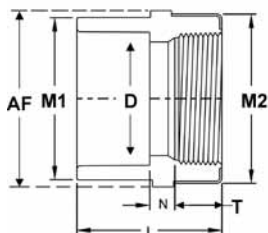
Schedule 80
ADAPTERS
Soc x MPT



Nom. Pipe Size	Xirtec		Corzan		CRITICAL DIMENSIONS					
	Univ. Part No.	IPEX Part No.	Univ. Part No.	IPEX Part No.	C	D	L	M	S	Wt.(lbs)
1/2 x 1/2	836005	036420	9836005	059286	0.890	0.526	1.890	1.250	0.755	0.042
3/4 x 3/4	836007	036421	9836007	059287	1.015	0.722	2.085	1.465	0.820	0.064
1 x 1	836010	036422	9836010	059288	1.140	0.936	2.390	1.780	0.975	0.104
1-1/4 x 1-1/4	836012	036423	9836012	059289	1.270	1.255	2.610	2.160	1.020	0.148
1-1/2 x 1-1/2	836015	036424	9836015	059290	1.385	1.476	2.745	2.625	1.030	0.194
2 x 2	836020	036425	9836020	059291	1.515	1.913	2.925	2.950	1.070	0.280
2-1/2 x 2-1/2	836025	036426	9836025	059292	1.765	2.290	3.510	3.540	1.410	0.419
3 x 3	836030	036427	9836030	059293	1.890	2.864	4.040	4.240	1.740	0.796
4 x 4	836040	036428	9836040	059294	2.270	3.786	4.385	5.340	1.740	1.250

Adapters

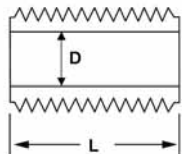
Schedule 80
ADAPTERS
Soc x SS Reinforced FPT



Nom. Pipe Size	Xirtec		Corzan		CRITICAL DIMENSIONS							
	Univ. Part No.	IPEX Part No.	Univ. Part No.	IPEX Part No.	AF	D	L	M1	M2	N	T	Wt.(lbs)
1/4 x 1/4	-	-	9835002SR	059644	0.875	0.302	1.405	0.815	0.815	0.155	0.500	0.022
3/8 x 3/8	-	-	9835003SR	059645	0.970	0.423	1.470	0.970	0.970	0.125	0.500	0.044
1/2 x 1/2	835005SR	036971	9835005SR	059951	1.390	0.526	1.750	1.190	1.220	0.190	0.690	0.070
3/4 x 3/4	835007SR	069972	9835007SR	059952	1.495	0.722	1.875	1.405	1.375	0.125	0.750	0.086
1 x 1	835010SR	036973	9835010SR	059953	2.015	0.936	2.155	1.750	1.690	0.125	0.915	0.130
1-1/4 x 1-1/4	835012SR	036974	9835012SR	059954	2.440	1.255	2.315	2.125	2.065	0.190	0.915	0.190
1-1/2 x 1-1/2	835015SR	036975	9835015SR	059955	2.805	1.476	2.440	2.405	2.440	0.220	0.915	0.269
2 x 2	835020SR	036976	9835020SR	059956	3.375	1.913	2.690	3.000	3.030	0.280	0.940	0.430
2-1/2 x 2-1/2	835025SR	036977	9835025SR	059646	3.600	2.290	3.250	3.560	3.590	0.345	1.325	0.721
3 x 3	835030SR	036978	9835030SR	059957	4.280	2.864	3.500	4.250	4.280	0.220	1.445	1.049
4 x 4	835040SR	036979	9835040SR	059958	5.805	3.786	3.970	5.220	5.250	0.125	1.530	1.620

Nipples

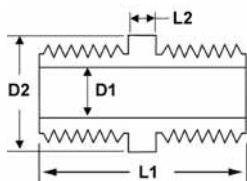
Schedule 80
NIPPLES
Close



Nom. Pipe Size	Xirtec		Corzan		CRITICAL DIMENSIONS		
	Univ. Part No.	IPEX Part No.	Univ. Part No.	IPEX Part No.	D	L	Wt.(lbs)
1/4 x 7/8	880005	036434	9880005	059296	0.302	0.875	0.009
3/8 x 1	881005	036435	9881005	059551	0.423	1.000	0.011
1/2 x 1-1/8	882005	036436	9882005	059297	0.526	1.125	0.015
3/4 x 1-3/8	883005	036437	9883005	059298	0.722	1.375	0.029
1 x 1-1/2	884005	036438	9884005	059299	0.936	1.500	0.044
1-1/4 x 1-5/8	885005	036439	9885005	059300	1.255	1.625	0.064
1-1/2 x 1-3/4	886015	036440	9886005	059301	1.476	1.750	0.088
2 x 2	887005	036441	9887005	059302	1.913	2.000	0.141
2-1/2 x 2-1/2	888005	036442	9888005	059303	2.290	2.500	0.703
3 x 2-5/8	889005	036443	9889005	059304	2.864	2.625	0.392
4 x 2-7/8	889005	036444	989005	059305	3.786	2.875	0.661

Nipples

Schedule 80
NIPPLES
Standard



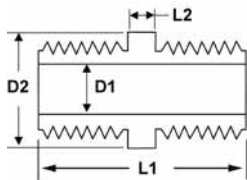
Nom. Pipe Size	Xirtec		Corzan		CRITICAL DIMENSIONS				
	Univ. Part No.	IPEX Part No.	Univ. Part No.	IPEX Part No.	D1	D2	L1	L2	Wt. (lbs)
1/4 x 1-1/2	880015	036445	9880015	059306	0.302	0.540	1.500	0.620	0.013
1/4 x 2	880020	036456	9880020	059316	0.302	0.540	2.000	1.120	0.020
1/4 x 2-1/2	880025	036457	-	-	0.302	0.540	2.500	1.620	0.024
1/4 x 3	880030	036458	9880030	059317	0.302	0.540	3.000	2.120	0.026
1/4 x 3-1/2	880035	036459	-	-	0.302	0.540	3.500	2.620	0.033
1/4 x 4	880040	036460	9880040	059318	0.302	0.540	4.000	3.120	0.035
1/4 x 4-1/2	880045	036461	-	-	0.302	0.540	4.500	3.620	0.042
1/4 x 5	880050	036462	9880050	059319	0.302	0.540	5.000	4.120	0.044
1/4 x 6	880060	036463	9880060	059320	0.302	0.540	6.000	5.120	0.055
1/4 x 8	880080	036464	-	-	0.302	0.540	8.000	7.120	0.079
1/4 x 10	880100	236012	-	-	0.302	0.540	10.000	9.120	0.022
1/4 x 12	880120	236013	-	-	0.302	0.540	12.000	11.120	0.100
3/8 x 1-1/2	881015	036446	9881015	059307	0.423	0.675	1.500	0.620	0.132
3/8 x 2	881020	036466	9881020	059552	0.423	0.675	2.000	1.120	0.029
3/8 x 2-1/2	881025	036467	-	-	0.423	0.675	2.500	1.620	0.031
3/8 x 3	881030	036468	9881030	059939	0.423	0.675	3.000	2.120	0.040
3/8 x 3-1/2	881035	036469	-	-	0.423	0.675	3.500	2.620	0.042
3/8 x 4	881040	036470	9881040	059554	0.423	0.675	4.000	3.120	0.046
3/8 x 4-1/2	881045	036471	-	-	0.423	0.675	4.500	3.620	0.053
3/8 x 5	881050	036472	-	-	0.423	0.675	5.000	4.120	0.060
3/8 x 6	881060	036473	-	-	0.423	0.675	6.000	5.120	0.073
3/8 x 8	881080	036474	-	-	0.423	0.675	8.000	7.120	0.104
1/2 x 1-1/2	882015	036447	9882015	059308	0.526	0.840	1.500	0.440	0.024
1/2 x 2	882020	036475	9882020	059322	0.526	0.840	2.000	0.940	0.031
1/2 x 2-1/2	882025	036476	-	-	0.526	0.840	2.500	1.440	0.049
1/2 x 3	882030	036477	9882030	059321	0.526	0.840	3.000	1.940	0.051
1/2 x 3-1/2	882035	036478	-	-	0.526	0.840	3.500	2.440	0.064
1/2 x 4	882040	036479	9882040	059324	0.526	0.840	4.000	2.940	0.068
1/2 x 4-1/2	882045	036480	-	-	0.526	0.840	4.500	3.440	0.079
1/2 x 5	882050	036481	9882050	059325	0.526	0.840	5.000	3.940	0.084

Continued

SCHEDULE 80 FITTINGS

NIPPLES

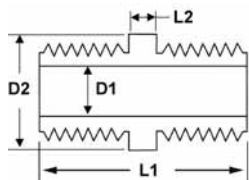
Schedule 80
NIPPLES
Standard Cont.



Nom. Pipe Size	Xirtec		Corzan		CRITICAL DIMENSIONS				
	Univ. Part No.	IPEX Part No.	Univ. Part No.	IPEX Part No.	D1	D2	L1	L2	Wt.(lbs)
1/2 x 5-1/2	882055	036482	-	-	0.526	0.840	5.500	4.440	0.097
1/2 x 6	882060	036483	9882060	059326	0.526	0.840	6.000	4.940	0.097
1/2 x 8	882080	036484	-	-	0.526	0.840	8.000	6.940	0.128
1/2 x 10	882100	036485	-	-	0.526	0.840	10.000	8.940	0.148
1/2 x 12	882120	036486	-	-	0.526	0.840	12.000	10.940	0.181
3/4 x 1-1/2	883015	036448	9883015	059309	0.772	1.050	1.500	0.400	0.044
3/4 x 2	883020	036490	9883020	059327	0.722	1.050	2.000	0.900	0.044
3/4 x 2-1/2	883025	036491	-	-	0.722	1.050	2.500	1.400	0.057
3/4 x 3	883030	036492	9883030	059328	0.722	1.050	3.000	1.900	0.073
3/4 x 3-1/2	883035	036493	-	-	0.722	1.050	3.500	2.400	0.082
3/4 x 4	883040	036494	9883040	059329	0.722	1.050	4.000	2.900	0.088
3/4 x 4-1/2	883045	036495	-	-	0.722	1.050	4.500	3.400	0.106
3/4 x 5	883050	036496	9883050	059331	0.722	1.050	5.000	3.900	0.108
3/4 x 5-1/2	883055	036497	-	-	0.722	1.050	5.500	4.400	0.128
3/4 x 6	883060	036498	9883060	059332	0.722	1.050	6.000	4.900	0.128
3/4 x 8	883080	036500	-	-	0.722	1.050	8.000	6.900	0.172
3/4 x 10	883100	036501	-	-	0.722	1.050	10.000	8.900	0.216
3/4 x 12	883120	036502	-	-	0.722	1.050	12.000	10.900	0.262
1 x 2	884020	036449	9884020	059310	0.936	1.315	2.000	0.640	0.060
1 x 2-1/2	884025	036504	-	-	0.936	1.315	2.500	1.140	0.082
1 x 3	884030	036505	9884030	059333	0.936	1.315	3.000	1.640	0.093
1x 3-1/2	884035	036506	-	-	0.936	1.315	3.500	2.140	0.117
1 x 4	884040	036507	9884040	059334	0.936	1.315	4.000	2.640	0.134
1x 4-1/2	884045	036508	-	-	0.936	1.315	4.500	3.140	0.152
1 x 5	884050	036509	9884050	059335	0.936	1.315	5.000	3.640	0.157
1 x 5-1/2	884055	036510	-	-	0.936	1.315	5.500	4.140	0.190
1 x 6	884060	036511	9884060	059336	0.936	1.315	6.000	4.640	0.190
1 x 8	884080	036512	-	-	0.936	1.315	8.000	6.640	0.282
1 x 10	884100	036514	-	-	0.936	1.315	10.000	8.640	0.342
1 x 12	884120	036515	-	-	0.936	1.315	12.000	10.640	0.417

Continued

Schedule 80
NIPPLES
Standard Cont.



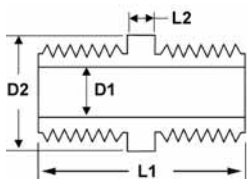
Nom. Pipe Size	Xirtec		Corzan		CRITICAL DIMENSIONS				
	Univ. Part No.	IPEX Part No.	Univ. Part No.	IPEX Part No.	D1	D2	L1	L2	Wt.(lbs)
1-1/4 x 2	885020	036450	9885020	059311	1.255	1.660	2.000	0.580	0.099
1-1/4 x 2-1/2	885025	036516	-	-	1.255	1.660	2.500	1.080	0.104
1-1/4 x 3	885030	036517	9885030	059338	1.255	1.660	3.000	1.580	0.132
1-1/4 x 3-1/2	885035	036518	-	-	1.255	1.660	3.500	2.080	0.159
1-1/4 x 4	885040	036519	9885040	059339	1.255	1.660	4.000	2.580	0.786
1-1/4 x 4-1/2	885045	036520	-	-	1.255	1.660	4.500	3.080	0.212
1-1/4 x 5	885050	036521	9885050	059340	1.255	1.660	5.000	3.580	0.225
1-1/4 x 6	885060	036522	9885060	059341	1.255	1.660	6.000	4.580	0.265
1-1/4 x 8	885080	036523	-	-	1.255	1.660	8.000	6.580	0.381
1-1/4 x 10	885100	036524	-	-	1.255	1.660	10.000	8.580	0.489
1-1/4 x 12	885120	036525	-	-	1.255	1.660	12.000	10.580	0.580
1-1/2 x 2	886020	036451	9886020	059312	1.476	1.900	2.000	0.560	0.099
1-1/2 x 2-1/2	886025	036526	-	-	1.476	1.900	2.500	1.060	0.099
1-1/2 x 3	886030	036527	9886030	059342	1.476	1.900	3.000	1.560	0.161
1-1/2 x 3-1/2	886035	036528	-	-	1.476	1.900	3.500	2.060	0.201
1-1/2 x 4	886040	036529	9886040	059343	1.476	1.900	4.000	2.560	0.209
1-1/2 x 4-1/2	886045	036530	-	-	1.476	1.900	4.500	3.060	0.258
1-1/2 x 5	886050	036531	9886050	059344	1.476	1.900	5.000	3.560	0.267
1-1/2 x 5-1/2	886055	036532	-	-	1.476	1.900	5.500	4.060	0.315
1-1/2 x 6	886060	036533	9886060	059345	1.476	1.900	6.000	4.560	0.315
1-1/2 x 8	886080	036534	-	-	1.476	1.900	8.000	6.560	0.470
1-1/2 x 10	886100	036535	-	-	1.476	1.900	10.000	8.560	0.580
1-1/2 x 12	886120	036536	-	-	1.476	1.900	12.000	10.560	0.712
2 x 2-1/2	887025	036452	9887025	059313	1.913	2.375	2.500	0.980	0.176
2 x 3	887030	036539	9887030	059346	1.913	2.375	3.000	1.480	0.214
2 x 3-1/2	887035	036540	-	-	1.913	2.375	3.500	1.980	0.280
2 x 4	887040	036541	9887040	059347	1.913	2.375	4.000	2.480	0.282
2 x 4-1/2	887045	036542	-	-	1.913	2.375	4.500	2.980	0.337
2 x 5	887050	036543	9887050	059348	1.913	2.375	5.000	3.480	0.353
2 x 5-1/2	887055	036544	-	-	1.913	2.375	5.500	3.980	0.430

Continued

SCHEDULE 80 FITTINGS

NIPPLES

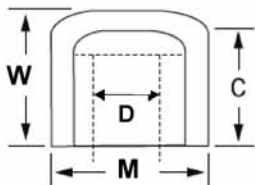
Schedule 80
NIPPLES
Standard Cont.



Nom. Pipe Size	Xirtec		Corzan		CRITICAL DIMENSIONS				
	Univ. Part No.	IPEX Part No.	Univ. Part No.	IPEX Part No.	D1	D2	L1	L2	Wt.(lbs)
2 x 6	887060	036545	9887060	059349	1.913	2.375	6.000	4.480	0.439
2 x 8	887080	035546	-	-	1.913	2.375	8.000	6.480	0.617
2 x 10	887100	036547	-	-	1.913	2.375	10.000	8.480	0.807
2 x 12	887120	036548	-	-	1.913	2.375	12.000	10.480	1.001
2-1/2 x 3	888030	036549	-	-	2.290	2.875	3.000	0.720	0.137
2-1/2 x 4	888040	036550	9888040	059351	2.290	2.875	4.000	1.720	0.183
2-1/2 x 5	888050	036272	-	-	2.290	2.875	5.000	1.800	0.309
2-1/2 x 6	888060	036551	9888060	059352	2.290	2.875	6.000	3.720	0.287
2-1/2 x 8	888080	036552	-	-	2.290	2.875	8.000	5.720	0.981
2-1/2 x 10	888100	036276	-	-	2.290	2.875	10.000	7.150	0.664
2-1/2 x 12	888120	036553	-	-	2.290	2.875	12.000	9.720	1.477
3 x 3	889030	036554	9889030	059353	2.864	3.500	3.000	0.600	0.459
3 x 4	889040	036555	9889040	059354	2.864	3.500	4.000	1.600	0.635
3 x 5	889050	035556	9889050	059355	2.864	3.500	5.000	2.600	0.789
3 x 6	889060	035557	9889060	059356	2.864	3.500	6.000	3.600	0.944
3 x 8	889080	036558	-	-	2.864	3.500	8.000	5.600	1.343
3 x 10	889100	036559	-	-	2.864	3.500	10.000	7.600	1.801
3 x 12	889120	035560	-	-	2.864	3.500	12.000	9.600	2.000
4 x 4	890040	036562	9890040	059314	3.786	4.500	4.000	1.400	0.904
4 x 5	890050	036563	9890050	059039	3.786	4.500	5.000	2.400	1.133
4 x 6	890060	036564	9890060	059357	3.786	4.500	6.000	3.400	1.362
4 x 8	890080	036565	-	-	3.786	4.500	8.000	5.400	1.907
4 x 10	890100	036566	-	-	3.786	4.500	10.000	7.400	2.405
4 x 12	890120	036567	-	-	3.786	4.500	12.000	9.400	2.899

Caps

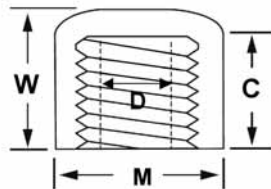
Schedule 80
CAPS
Soc Cap



Nom. Pipe Size	Xirtec		Corzan		CRITICAL DIMENSIONS				
	Univ. Part No.	IPEX Part No.	Univ. Part No.	IPEX Part No.	C	D	M	W	Wt.(lbs)
1/4	847002	036056	9847002	059107	0.730	0.300	0.815	0.940	0.011
3/8	847003	035057	9847003	059108	0.870	0.423	0.970	1.155	0.020
1/2	847005	036058	9847005	059109	0.885	0.526	1.185	1.260	0.030
3/4	847007	036059	9847007	059110	1.000	0.722	1.400	1.360	0.049
1	847010	036060	9847010	059111	1.125	0.936	1.750	1.580	0.088
1-1/4	847012	036061	9847012	059112	1.265	1.255	2.090	1.730	0.123
1-1/2	847015	036062	9847015	059113	1.395	1.476	2.355	1.930	0.170
2	847020	036063	9847020	059114	1.510	1.913	2.855	2.145	0.247
2-1/2	847025	036064	9847025	059115	1.780	2.290	3.525	2.635	0.498
3	847030	036065	9847030	059116	1.885	2.864	4.180	2.850	0.697
4	847040	036066	9847040	059117	2.285	3.786	5.250	3.335	1.323
6	847060	036067	9847060	059118	3.055	5.709	7.585	4.825	2.908
8	847080	036068	9847080	059029	5.630	7.565	9.685	6.495	6.100

SCHEDULE 80 FITTINGS

Caps



Schedule 80
CAPS
FPT Cap

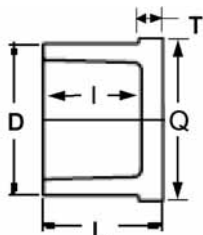
Nom. Pipe Size	Xirtec		Corzan		CRITICAL DIMENSIONS				
	Univ. Part No.	IPEX Part No.	Univ. Part No.	IPEX Part No.	C	D	M	W	Wt.(lbs)
1/4	848002	036072	9848002	059119	0.645	0.300	0.905	0.940	0.020
3/8	848003	036073	9848003	059120	0.750	0.423	0.970	0.905	0.020
1/2	848005	036074	9848005	059121	0.875	0.526	1.295	1.185	0.049
3/4	848007	036075	9848007	059122	1.000	0.722	1.520	1.255	0.071
1	848010	036076	9848010	059123	1.125	0.936	1.830	1.490	0.115
1-1/4	848012	036077	9848012	059124	1.250	1.255	2.235	1.500	0.148
1-1/2	848015	036078	9848015	059125	1.375	1.476	2.490	1.545	0.174
2	848020	036079	9848020	059126	1.500	1.913	3.040	1.710	0.280
2-1/2	848025	036080	9848025	059127	1.750	2.290	3.625	2.440	0.540
3	848030	036081	9848030	059128	1.875	2.864	4.305	2.520	0.769
4	848040	036082	9848040	059129	2.250	3.786	5.470	2.880	1.195

Plugs

Schedule 80

PLUGS

Spig Plug

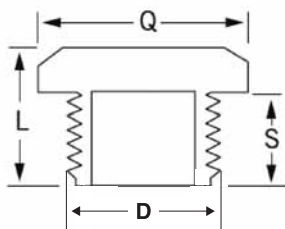


Nom. Pipe Size	Xirtec		Corzan		CRITICAL DIMENSIONS					
	Univ. Part No.	IPEX Part No.	Univ. Part No.	IPEX Part No.	D	L	T	I	Q	Wt.(lbs)
2	849020	036585	-	-	2.375	1.875	0.380	1.520	2.565	0.229

Schedule 80

PLUGS

MPT Plug



Nom. Pipe Size	Xirtec		Corzan		CRITICAL DIMENSIONS				
	Univ. Part No.	IPEX Part No.	Univ. Part No.	IPEX Part No.	D	L	Q	S	Wt.(lbs)
1/4	850002	036568	9850002	059361	0.540	0.725	0.635	0.545	0.011
3/8	850003	035569	9850003	059362	0.675	0.760	0.800	0.565	0.011
1/2	850005	036570	9850005	059363	0.840	0.975	1.120	0.720	0.022
3/4	850007	036571	9850007	059364	1.050	1.050	1.375	0.750	0.033
1	850010	036572	9850010	059365	1.315	1.205	1.690	0.905	0.062
1-1/4	850012	036573	9850012	059366	1.660	1.435	2.055	1.005	0.080
1-1/2	850015	036574	9850015	059367	1.900	1.460	2.315	1.025	0.134
2	850020	036575	9850020	059368	2.375	1.440	2.780	1.010	0.196
2-1/2	850025	036576	9850025	059369	2.875	1.970	3.120	1.570	0.300
3	850030	036577	9850030	059370	3.500	2.000	3.740	1.630	0.460
4	850040	036578	9850040	059371	4.500	2.090	4.730	1.710	0.730
6	850060	036579	-	-	6.625	2.085	6.850	1.565	1.700

SCHEDULE 80 FITTINGS

This page intentionally
left blank

MANUFACTURER'S PRODUCT SPECIFICATION: SCHEDULE 40

Scope

This specification sheet covers the manufacturer's requirements for Xirtec®140 PVC Schedule 40 pipe fittings as manufactured by IPEX. These fittings meet or exceed the standards set by the American Society for Testing and Materials (ASTM) and the National Sanitation Foundation (NSF) International, Standards 14/61.

PVC Materials

Rigid Xirtec®140 PVC (Polyvinyl Chloride) used in the manufacture of Schedule 40 fittings is of Type I, Grade 1 compound (cell classification 12454) as stated in ASTM D1784. Raw material used in molding shall contain the specified amounts of color pigment, stabilizers, and other additives approved by NSF International.

Dimensions

Physical dimensions and tolerances of Xirtec®140 PVC Schedule 40 IPS fittings as manufactured by IPEX meet the requirements of ASTM Standard Specification D2466. Threaded fittings have Taper Pipe Threads in accordance with ANSI/ASME B1.20.1.

Marking

Xirtec®140 PVC Schedule 40 fittings are marked as prescribed in ASTM D2466 to indicate the manufacturer's name and trademark, material designation, the NSF mark, size of fitting, and ASTM designation.

Sample Specification

All Schedule 40 socket fittings shall conform to ASTM D2466. All pipe, fittings, and valves shall be compatible Xirtec®140 compound and produced by one manufacturer; as supplied by IPEX.

Notes

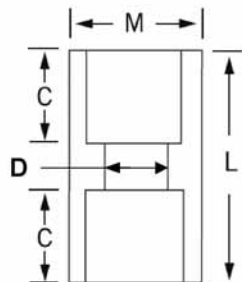
All dimensions are in inches unless otherwise specified. Dimensions are subject to change without notice. Contact the factory for clarifications.



*Corzan is a trademark of The BF Goodrich Company and is registered or under application in various countries of the world.

COUPLINGS

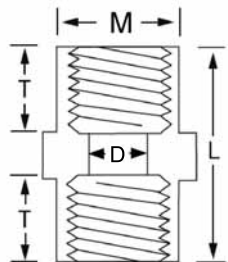
Schedule 40
COUPLINGS
Soc x Soc



Nom. Pipe Size	White		Gray		CRITICAL DIMENSIONS				
	Univ. Part No.	IPEX Part No.	Univ. Part No.	IPEX Part No.	C	D	L	M	Wt.(lbs)
3/8 x 3/8	429003	035447	-	-	1.250	0.473	2.625	0.875	0.031
1/2 x 1/2	429005	035448	429005G	035052	0.900	0.602	1.910	1.220	0.044
3/4 x 3/4	429007	035449	429007G	035053	1.025	0.804	2.150	1.445	0.055
1 x 1	429010	035450	429010G	035054	1.130	1.029	2.380	1.740	0.090
1-1/4 x 1-1/4	429012	035451	429012G	035055	1.240	1.360	2.630	1.995	0.130
1-1/2 x 1-1/2	429015	035452	429015G	035056	1.355	1.590	2.875	2.250	0.165
2 x 2	429020	035453	429020G	035057	1.525	2.047	3.165	2.725	0.227
2-1/2 x 2-1/2	429025	035454	429025G	035058	1.780	2.445	3.750	3.380	0.481
3 x 3	429030	035455	429030G	035059	1.910	3.042	4.040	4.000	0.613
4 x 4	429040	035456	429040G	035060	2.290	3.998	4.760	5.025	0.082
5 x 5	429050	035457	429050G	035061	3.000	5.016	6.190	6.125	1.601
6 x 6	429060	035458	429060G	035062	3.070	6.031	6.375	7.250	2.138
8 x 8	429080	035459	429080G	035063	4.555	7.941	9.440	9.575	4.610

COUPLINGS

Schedule 40
COUPLINGS
FPT x FPT

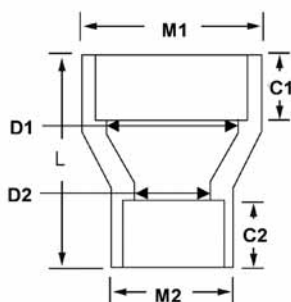


Nom. Pipe Size	White		Gray		CRITICAL DIMENSIONS				
	Univ. Part No.	IPEX Part No.	Univ. Part No.	IPEX Part No.	D	T	L	M	Wt.(lbs)
1/2 x 1/2	430005	035466	-	-	0.602	0.755	1.605	1.220	0.040
3/4 x 3/4	430007	035467	-	-	0.804	0.755	1.635	1.445	0.050
1 x 1	430010	035468	-	-	1.029	0.945	2.000	1.740	0.090

SCHEDULE 40 FITTINGS

REDUCING COUPLINGS

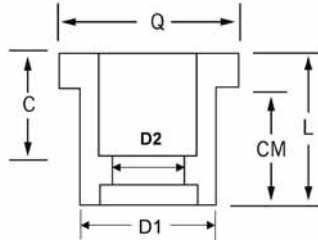
Schedule 40
COUPLINGS
Soc x Soc - Reducing



Nom. Pipe Size	White		Gray		CRITICAL DIMENSIONS							
	Univ. Part No.	IPEX Part No.	Univ. Part No.	IPEX Part No.	C1	C2	D1	D2	L	M1	M2	Wt.(lbs)
3/4 x 1/2	429101	035759	-	-	0.990	0.780	0.804	0.602	1.900	1.445	1.220	0.056
1 x 3/4	429131	035760	-	-	1.080	0.930	1.029	0.804	2.100	1.740	1.445	0.080
1-1/4 x 1	429168	035761	-	-	1.250	1.130	1.360	1.029	2.670	1.995	1.740	0.181
1-1/2 x 1-1/4	429212	035762	-	-	1.405	1.265	1.590	1.360	2.830	2.250	1.995	0.231
2 x 1-1/2	429251	035764	-	-	1.545	1.405	2.047	1.590	3.235	2.725	2.250	0.313
4 x 3	429422	035765	-	-	2.270	1.880	3.998	3.042	4.595	5.025	4.000	1.250
6 x 4	429532	035766	-	-	3.000	2.270	6.031	3.998	6.700	7.250	5.025	3.200

REDUCING BUSHINGS

Schedule 40
REDUCING BUSHINGS
Spig x Soc



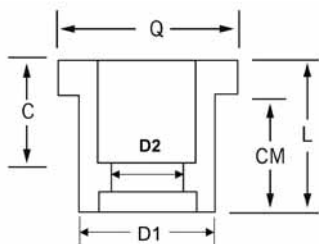
Nom. Pipe Size	White		Gray		CRITICAL DIMENSIONS						
	Univ. Part No.	IPEX Part No.	Univ. Part No.	IPEX Part No.	C	CM	D1	D2	L	Q	Wt.(lbs)
1/2 x 1/4	437072	035643	-	-	0.690	0.880	0.840	0.344	1.065	0.975	0.020
1/2 x 3/8	437073	035644	-	-	0.775	0.890	0.840	0.473	1.125	0.990	0.020
3/4 x 1/2	437101	035646	437101G	035209	0.910	1.005	1.050	0.602	1.380	1.250	0.033
1 x 1/2	437130	035648	437130G	035211	0.900	1.135	1.315	0.602	1.500	1.640	0.075
1 x 3/4	437131	035649	437131G	035212	1.035	1.135	1.315	0.804	1.505	1.820	0.040
1-1/4 x 1/2	437166	035650	437166G	035213	0.875	1.250	1.660	0.602	1.620	2.070	0.090
1-1/4 x 3/4	437167	035651	437167G	035214	1.030	1.250	1.660	0.804	1.625	2.110	0.090
1-1/4 x 1	437168	035652	437168G	035215	1.155	1.260	1.660	1.029	1.635	2.110	0.088
1-1/2 x 1/2	437209	035653	437209G	035216	1.095	1.370	1.900	0.602	1.745	2.440	0.165
1-1/2 x 3/4	437210	035654	437210G	035217	1.105	1.370	1.900	0.804	1.745	2.440	0.165
1-1/2 x 1	437211	035655	437211G	035218	1.160	1.365	1.900	1.029	1.745	2.440	0.154
1-1/2 x 1-1/4	437212	035656	437212G	035219	1.295	1.385	1.900	1.360	1.760	2.440	0.060
2 x 1/2	437247	035657	437247G	035220	1.156	1.505	2.375	0.602	1.870	2.820	0.190
2 x 3/4	437248	035658	437248G	035221	1.156	1.505	2.375	0.804	1.875	2.820	0.170
2 x 1	437249	035659	437249G	035222	1.156	1.480	2.375	1.029	1.855	2.540	0.243
2 x 1-1/4	437250	035660	437250G	035223	1.280	1.505	2.375	1.360	1.890	2.750	0.180
2 x 1-1/2	437251	035661	437251G	035224	1.135	1.250	2.375	1.590	1.510	2.750	0.160
2-1/2 x 1/2	437287	035662	-	-	1.750	1.995	2.875	0.602	2.500	3.130	0.320
2-1/2 x 3/4	437288	035663	-	-	1.750	1.995	2.875	0.804	2.375	3.130	0.331
2-1/2 x 1	437289	035664	437289G	035226	1.750	1.995	2.875	1.029	2.375	3.550	0.340
2-1/2 x 1-1/4	437290	035665	437290G	035227	1.750	1.995	2.875	1.360	2.375	3.550	0.430
2-1/2 x 1-1/2	437291	035666	437291G	035228	1.750	1.985	2.875	1.590	2.375	3.550	0.340
2-1/2 x 2	437292	035667	437292G	035229	1.750	1.755	2.875	2.047	2.130	3.550	0.220
3 x 3/4	437334	035668	-	-	1.875	2.055	3.500	0.804	2.280	3.535	0.481
3 x 1	437335	035669	437335G	035231	1.875	1.900	3.500	1.029	2.270	3.905	0.460
3 x 1-1/4	437336	035670	437336G	035232	1.875	2.000	3.500	1.360	2.375	3.750	0.481
3 x 1-1/2	437337	035671	437337G	035233	1.875	1.895	3.500	1.590	2.270	4.030	0.650
3 x 2	437338	035672	437338G	035234	1.875	1.890	3.500	2.047	2.265	4.030	0.672

Continued



REDUCING BUSHINGS

Schedule 40
REDUCING BUSHINGS
Spig x Soc Cont.

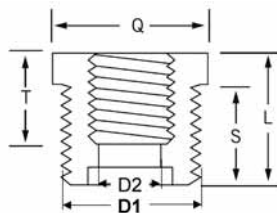


Nom. Pipe Size	White		Gray		CRITICAL DIMENSIONS						
	Univ. Part No.	IPEX Part No.	Univ. Part No.	IPEX Part No.	C	CM	D1	D2	L	Q	Wt.(lbs)
3 x 2-1/2	437339	035673	437339G	035235	1.875	1.885	3.500	2.445	2.500	3.900	0.463
4 x 2	437420	035677	437420G	035238	2.000	2.265	4.500	2.047	2.650	4.905	0.810
4 x 2-1/2	437421	035678	437421G	035239	2.015	2.005	4.500	2.445	3.395	4.730	0.875
4 x 3	437422	035679	437422G	035240	2.000	2.270	4.500	3.042	2.650	4.910	0.895
5 x 2	437486	035680	-	-	3.000	2.980	5.563	2.047	3.425	5.780	1.499
5 x 3	437488	035681	-	-	3.000	2.990	5.563	3.042	3.440	5.780	1.400
5 x 4	437490	035682	437490G	035241	2.005	1.220	5.563	3.998	3.495	4.945	1.301
6 x 2	437528	035683	-	-	3.000	3.010	6.625	2.047	3.280	6.675	1.860
6 x 3	437530	035684	-	-	3.000	3.090	6.625	3.042	3.720	7.320	2.300
6 x 4	437532	035685	437532G	035244	3.000	3.100	6.625	3.998	3.720	7.340	2.020
6 x 5	437534	035686	-	-	3.010	3.500	6.625	5.016	3.980	6.850	1.730
8 x 4	437582	035687	-	-	4.000	4.055	8.625	3.998	4.610	8.850	4.120
8 x 6	437585	035688	437585G	035246	4.000	4.080	8.625	6.031	4.470	9.320	4.000

SCHEDULE 40 FITTINGS

REDUCING BUSHINGS

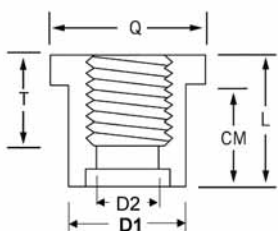
Schedule 40
REDUCING BUSHINGS
MPT x FPT



Nom. Pipe Size	White		Gray		CRITICAL DIMENSIONS						
	Univ. Part No.	IPEX Part No.	Univ. Part No.	IPEX Part No.	D1	D2	L	Q	S	T	Wt.(lbs)
3/8 x 1/4	439052	035696	-	-	0.675	0.344	0.800	0.800	0.600	0.570	0.011
1/2 x 1/4	439072	035697	-	-	0.840	0.344	0.880	0.895	0.690	0.590	0.020
1/2 x 3/8	439073	035698	-	-	0.840	0.473	0.940	0.990	0.750	0.585	0.011
3/4 x 1/4	439098	035699	-	-	1.050	0.344	1.005	1.185	0.780	0.580	0.031
3/4 x 3/8	439099	035698	-	-	1.050	0.473	1.000	1.200	0.775	0.650	0.031
3/4 x 1/2	439101	035700	-	-	1.050	0.602	1.010	1.375	0.685	0.770	0.031
1 x 1/2	439130	035701	-	-	1.315	0.602	1.125	1.685	0.810	0.760	0.062
1 x 3/4	439131	035702	-	-	1.315	0.804	1.140	1.690	0.820	0.780	0.044
1-1/4 x 1/2	439166	035703	-	-	1.660	0.804	1.275	1.840	1.000	0.650	0.090
1-1/4 x 3/4	439167	035704	-	-	1.660	0.804	1.280	1.840	1.000	0.705	0.093
1-1/4 x 1	439168	035705	-	-	1.660	1.029	1.290	1.840	1.010	0.990	0.075
1-1/2 x 1/2	439209	035706	-	-	1.900	0.602	1.360	2.075	1.025	0.630	0.123
1-1/2 x 3/4	439210	035707	-	-	1.900	0.804	1.250	2.070	0.900	0.825	0.115
1-1/2 x 1	439211	035708	-	-	1.900	1.029	1.325	2.080	1.015	0.985	0.128
1-1/2 x 1-1/4	439212	035709	-	-	1.900	1.360	1.030	2.085	0.780	0.945	0.057
2 x 1	439249	035711	-	-	2.375	1.029	1.310	2.540	0.935	1.040	0.181
2 x 1-1/4	439250	035712	-	-	2.375	1.360	1.460	2.560	1.040	1.030	0.181
2 x 1-1/2	439251	035713	-	-	2.375	1.590	1.440	2.550	1.060	1.025	0.150
2-1/2 x 2	439292	035714	-	-	2.875	2.047	1.965	3.120	1.560	1.065	0.251
3 x 2	439338	035715	-	-	3.500	2.047	2.020	3.740	1.610	1.085	0.533
3 x 2-1/2	439339	035716	-	-	3.500	2.445	2.010	3.730	1.620	1.560	0.401

REDUCING BUSHINGS

Schedule 40
REDUCING BUSHINGS
Spig x FPT



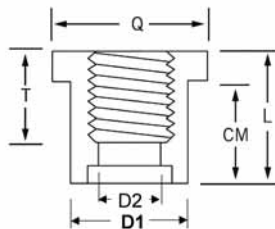
Nom. Pipe Size	White		Gray		CRITICAL DIMENSIONS						
	Univ. Part No.	IPEX Part No.	Univ. Part No.	IPEX Part No.	CM	D1	D2	L	Q	T	Wt.(lbs)
1/2 x 1/8	438071	035717	-	-	0.745	0.840	0.249	0.950	0.965	0.380	0.020
1/2 x 1/4	438072	035718	438072G	035258	0.810	0.840	0.344	1.015	0.890	0.600	0.020
1/2 x 3/8	438073	035719	438073G	035259	0.875	0.840	0.473	1.105	1.105	0.585	0.020
3/4 x 1/4	438098	035720	-	-	1.000	1.050	0.344	1.230	1.200	0.730	0.040
3/4 x 1/2	438101	035722	438101G	035260	1.020	1.050	0.602	1.340	1.375	0.770	0.030
1 x 3/8	438129	035723	-	-	1.175	1.315	0.473	1.340	1.500	0.610	0.070
1 x 1/2	438130	035724	438130G	035262	1.175	1.315	0.602	1.490	1.685	0.765	0.060
1 x 3/4	438131	035725	438131G	035263	1.190	1.315	0.804	1.510	1.685	0.775	0.050
1-1/4 x 1/2	438166	035726	438166G	035264	1.245	1.660	0.602	1.640	2.070	0.700	0.123
1-1/4 x 3/4	438167	035727	438167G	035265	1.245	1.660	0.804	1.625	2.070	0.680	0.121
1-1/4 x 1	438168	035728	438168G	035266	1.250	1.660	1.029	1.630	2.070	0.810	0.070
1-1/2 x 1/2	438209	035729	438209G	035267	1.365	1.900	0.602	1.745	2.550	0.680	0.157
1-1/2 x 3/4	438210	035730	438210G	035268	1.420	1.900	0.804	1.750	2.315	0.800	0.130
1-1/2 x 1	438211	035731	438211G	035269	1.420	1.900	1.029	1.800	2.320	0.990	0.152
1-1/2 x 1-1/4	438212	035732	438212G	035270	1.405	1.900	1.360	1.780	2.325	1.285	0.121
2 x 1/2	438247	035733	438247G	035271	1.490	2.375	0.602	1.870	2.820	0.690	0.270
2 x 3/4	438248	035734	438248G	035272	1.490	2.375	0.804	1.875	2.820	0.700	0.250
2 x 1	438249	035735	438249G	035273	1.500	2.375	1.029	1.880	2.820	0.825	0.240
2 x 1-1/4	438250	035736	438250G	035274	1.540	2.375	1.360	1.920	2.755	1.005	0.227
2 x 1-1/2	438251	035737	438251G	035275	1.535	2.375	1.590	1.915	2.750	0.990	0.196
2-1/2 x 1/2	438287	035738	-	-	1.990	2.875	0.602	2.380	3.120	0.760	0.454
2-1/2 x 3/4	438288	035739	-	-	1.990	2.875	0.804	2.435	3.120	0.805	0.441
2-1/2 x 1	438289	035740	-	-	1.990	2.875	1.029	2.395	3.110	1.000	0.459
2-1/2 x 1-1/4	438290	035741	-	-	1.990	2.875	1.360	2.385	3.120	1.020	0.454
2-1/2 x 1-1/2	438291	035742	438291G	035277	1.980	2.875	1.590	2.375	3.110	1.060	0.330
2-1/2 x 2	438292	035743	438292G	035278	1.990	2.875	2.047	2.375	3.125	1.075	0.311
3 x 3/4	438334	035744	-	-	1.990	3.500	0.804	2.285	3.740	0.950	0.595
3 x 1	438335	035745	-	-	1.990	3.500	1.029	2.290	3.750	0.900	0.582

Continued

SCHEDULE 40 FITTINGS

REDUCING BUSHINGS

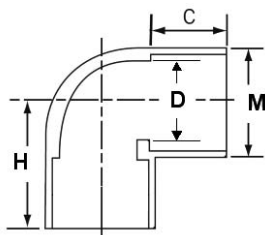
Schedule 40
REDUCING BUSHINGS
Spig x FPT Cont.



Nom. Pipe Size	White		Gray		CRITICAL DIMENSIONS						
	Univ. Part No.	IPEX Part No.	Univ. Part No.	IPEX Part No.	CM	D1	D2	L	Q	T	Wt.(lbs)
3 x 1-1/4	438336	035746	-	-	1.990	3.500	1.360	2.380	3.980	0.995	0.570
3 x 1-1/2	438337	035747	-	-	1.990	3.500	1.590	2.375	3.730	1.020	0.520
3 x 2	438338	035748	438338G	035283	1.880	3.500	2.047	2.190	3.890	1.110	0.529
3 x 2-1/2	438339	035749	-	-	1.880	3.500	2.445	2.405	3.740	1.605	0.472
4 x 2	438420	035750	438420G	035285	2.245	4.500	2.047	2.600	4.750	1.150	0.830
4 x 2-1/2	438421	035751	-	-	2.245	4.500	2.445	2.630	4.725	1.535	1.100
4 x 3	438422	035752	438422G	035286	2.260	4.500	3.042	2.645	7.720	1.670	0.770
5 x 3	438488	035753	-	-	2.995	5.563	3.042	3.440	5.795	1.625	1.601
5 x 4	438490	035754	438490G	235062	2.980	5.563	3.998	3.465	5.760	1.750	1.400
6 x 2	438528	035755	-	-	3.480	6.625	2.047	3.970	6.845	1.105	2.000
6 x 3	438530	035756	-	-	2.000	6.625	3.042	4.000	6.875	1.610	2.385
6 x 4	438532	035757	438532G	035287	2.000	6.625	3.998	2.390	3.125	1.380	2.701
6 x 5	438534	035758	-	-	3.465	6.625	5.016	3.950	6.860	1.820	2.000

90° ELBOWS

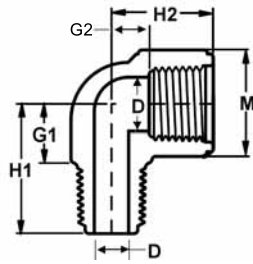
Schedule 40
90° ELBOWS
Soc x Soc



Nom. Pipe Size	White		Gray		CRITICAL DIMENSIONS				
	Univ. Part No.	IPEX Part No.	Univ. Part No.	IPEX Part No.	C	D	H	M	Wt.(lbs)
3/8 x 3/8	-	-	406003G	035108	0.750	0.473	1.125	0.875	0.031
1/2 x 1/2	406005	035519	406005G	035109	0.885	0.602	1.395	1.115	0.060
3/4 x 3/4	406007	035520	406007G	035110	0.995	0.804	1.570	1.335	0.071
1 x 1	406010	035521	406010G	035111	1.125	1.029	1.820	1.625	0.123
1-1/4 x 1-1/4	406012	035522	406012G	035112	1.275	1.360	2.170	1.985	0.190
1-1/2 x 1-1/2	406015	035523	406015G	035113	1.405	1.590	2.425	2.230	0.240
2 x 2	406020	035524	406020G	035114	1.525	2.047	2.805	2.715	0.370
2-1/2 x 2-1/2	406025	035525	406025G	035115	1.770	2.445	3.340	3.335	0.783
3 x 3	406030	035526	406030G	035116	1.920	3.042	3.750	3.990	1.020
4 x 4	406040	035527	406040G	035117	2.050	3.998	4.410	5.035	1.430
5 x 5	406050	035528	406050G	035118	3.030	5.016	6.000	6.095	3.400
6 x 6	406060	035529	406060G	035119	3.045	6.031	6.545	7.305	4.508
8 x 8	406080	035530	406080G	035120	4.040	7.941	8.540	9.395	8.670
10 x 10	406100	035928	-	-	5.500	9.976	11.315	10.780	17.360
12 x 12	406120	035929	-	-	6.500	11.888	13.440	12.780	25.940

90° ELBOWS

Schedule 40
90° ELBOWS
MPT x FPT - Street



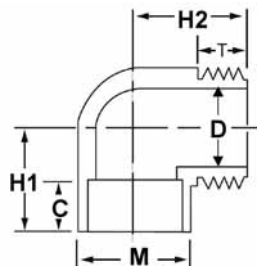
Nom. Pipe Size	White		Gray		CRITICAL DIMENSIONS						
	Univ. Part No.	IPEX Part No.	Univ. Part No.	IPEX Part No.	D	G1	G2	H1	H2	M	Wt.(lbs)
1/2 x 1/2	412005	035552	412005G	035132	0.602	0.750	0.405	1.500	1.155	1.115	0.020
3/4 x 3/4	412007	035553	412007G	035133	0.804	0.815	0.500	1.565	1.315	1.335	0.030
1 x 1	412010	035554	412010G	035134	1.029	1.000	0.625	1.750	1.500	1.625	0.060
1-1/4 x 1-1/4	412012	035555	-	-	1.360	1.220	0.875	2.220	1.875	1.985	0.190
1-1/2 x 1-1/2	412015	035556	412015G	035135	1.590	1.345	0.970	2.345	2.030	2.230	0.249
2 x 2	412020	035557	-	-	2.047	1.595	1.250	2.780	2.315	2.715	0.390

90° ELBOWS

Schedule 40

90° ELBOWS

Soc x MPT - Street

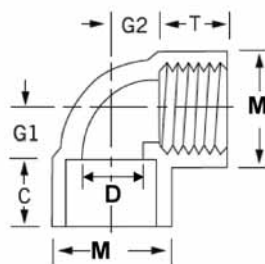


Nom. Pipe Size	White		Gray		CRITICAL DIMENSIONS						
	Univ. Part No.	IPEX Part No.	Univ. Part No.	IPEX Part No.	C	D	H1	H2	M	T	Wt.(lbs)
1/2 x 1/2	410005	035500	-	-	0.815	0.602	1.190	1.375	1.115	0.750	0.060
3/4 x 3/4	410007	035501	-	-	0.845	0.804	1.470	1.530	1.335	0.720	0.090
1 x 1	410010	035502	-	-	1.125	1.029	1.845	1.940	1.625	0.905	0.119
1-1/4 x 1-1/4	410012	035503	-	-	1.280	1.360	2.185	2.555	1.985	1.315	0.287
1-1/2 x 1-1/2	410015	035504	-	-	1.405	1.590	2.405	2.335	2.230	1.170	0.326
2 x 2	410020	035505	-	-	1.530	2.047	2.805	2.690	2.715	1.240	0.525

Schedule 40

90° ELBOWS

Soc x FPT

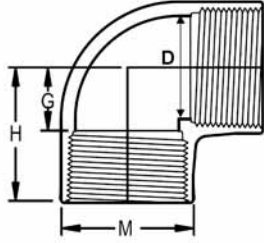


Nom. Pipe Size	White		Gray		CRITICAL DIMENSIONS						
	Univ. Part No.	IPEX Part No.	Univ. Part No.	IPEX Part No.	C	D	G1	G2	M	T	Wt.(lbs)
1/2 x 1/2	407005	035506	407005G	035101	0.900	0.602	0.300	0.305	1.115	0.905	0.084
3/4 x 3/4	407007	035507	407007G	035102	1.020	0.804	0.310	0.315	1.335	1.025	0.126
1 x 1	407010	035508	407010G	035103	1.150	1.029	0.710	0.720	1.625	1.160	0.152
1-1/4 x 1-1/4	407012	035509	407012G	035104	1.280	1.360	0.745	0.750	1.985	1.285	0.234
1-1/2 x 1-1/2	407015	035510	407015G	035105	1.400	1.590	1.025	1.025	2.230	1.400	0.309
2 x 2	407020	035511	407020G	035106	1.515	2.047	1.275	1.270	2.715	1.515	0.489
2-1/2 x 1-1/2	407025	035512	-	-	2.000	2.445	1.500	1.565	3.335	1.500	0.959
3 x 3	407030	035589	-	-	1.940	3.042	2.065	2.000	3.990	1.625	1.400
4 x 4	407040	035513	-	-	2.000	3.998	2.565	2.530	5.035	1.720	2.299

SCHEDULE 40 FITTINGS

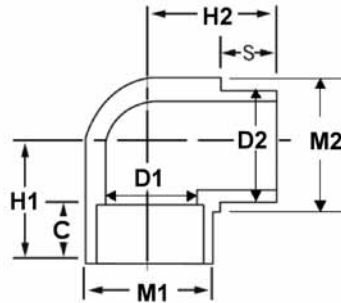
90° ELBOWS

Schedule 40
90° ELBOWS
FPT x FPT



Nom. Pipe Size	White		Gray		CRITICAL DIMENSIONS				
	Univ. Part No.	IPEX Part No.	Univ. Part No.	IPEX Part No.	D	G	H	M	Wt.(lbs)
1/2 x 1/2	408005	035538	408005G	035125	0.602	0.530	1.280	1.115	0.071
3/4 x 3/4	408007	035539	408007G	035126	0.804	0.625	1.440	1.335	0.099
1 x 1	408010	035540	408001G	036127	1.029	0.815	1.815	1.625	0.190
1-1/4 x 1-1/4	408012	035541	-	-	1.360	1.000	2.000	1.985	0.260
1-1/2 x 1-1/2	408015	035542	-	-	1.590	1.000	2.000	2.230	0.351
2 x 2	408020	035543	-	-	2.047	1.315	1.815	2.715	0.470

Schedule 40
90° ELBOWS
Soc x Spig - Street



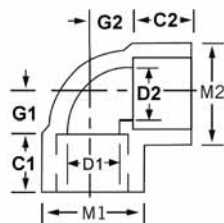
Nom. Pipe Size	White		Gray		CRITICAL DIMENSIONS								
	Univ. Part No.	IPEX Part No.	Univ. Part No.	IPEX Part No.	C	D1	D2	H1	H2	M1	M2	S	Wt.(lbs)
1/2 x 1/2	409005	035544	-	-	0.745	0.602	0.840	0.900	1.445	1.115	1.115	0.760	0.055
3/4 x 3/4	409007	035545	-	-	0.985	0.804	1.050	1.530	1.815	1.335	1.335	1.000	0.090
1 x 1	409010	035546	409010G	035128	1.000	1.029	1.315	1.785	1.925	1.625	1.625	1.015	0.132
1-1/4 x 1-1/4	409012	035547	-	-	1.265	1.360	1.660	2.175	2.575	1.985	1.985	1.300	0.190
1-1/2 x 1-1/2	409015	035548	409015G	035129	1.400	1.590	1.900	2.405	2.660	2.230	2.230	1.435	0.250
2 x 2	409020	035549	409020G	035130	1.535	2.047	2.375	2.805	3.040	2.715	2.715	1.560	0.514

REDUCING 90° ELBOWS

Schedule 40

90° ELBOWS

Soc x Soc - Reducing

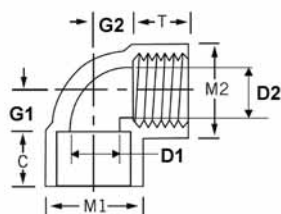


Nom. Pipe Size	White		Gray		CRITICAL DIMENSIONS								
	Univ. Part No.	IPEX Part No.	Univ. Part No.	IPEX Part No.	C1	C2	D1	D2	G1	G2	M1	M2	Wt.(lbs)
3/4 x 1/2	406101	035535	-	-	0.785	0.755	0.804	0.602	0.555	0.555	1.335	1.115	0.075
1 x 1/2	406130	035536	-	-	1.155	0.905	1.029	0.602	0.625	0.615	1.625	1.115	0.110
1 x 3/4	406131	035978	-	-	0.955	0.780	1.029	0.804	0.530	0.530	1.625	1.335	0.121
1-1/4 x 1-1/2	406166	235029	-	-	1.280	1.125	1.360	0.602	0.780	1.000	1.985	1.115	0.132
1-1/4 x 1-3/4	406167	235030	-	-	1.250	1.000	1.360	0.804	0.655	1.000	1.985	1.335	0.132
1-1/4 x 1	406168	035991	-	-	1.375	1.125	1.360	1.029	0.690	0.875	1.985	1.625	0.160
1-1/2 x 1/2	406209	235031	-	-	1.250	1.125	1.590	0.602	0.470	1.125	2.230	1.115	0.198
1-1/2 x 1	406211	235032	-	-	1.375	1.125	1.590	1.029	1.065	1.315	2.230	1.625	0.287
2 x 1-1/2	406251	035537	-	-	1.750	1.315	2.047	1.590	1.095	1.250	2.715	2.230	0.430

Schedule 40

90° ELBOWS

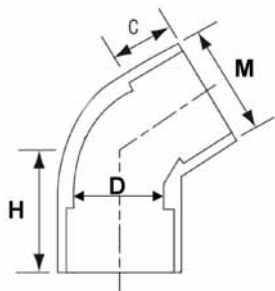
Soc x FPT - Reducing



Nom. Pipe Size	White		Gray		CRITICAL DIMENSIONS								
	Univ. Part No.	IPEX Part No.	Univ. Part No.	IPEX Part No.	C	D1	D2	G1	G2	M1	M2	T	Wt.(lbs)
1/2 x 3/4	407074	035514	-	-	0.750	0.602	0.804	0.690	0.625	1.115	1.335	0.815	0.071
3/4 x 1/2	407101	035515	-	-	1.020	0.804	0.602	0.510	0.500	1.335	1.115	0.870	0.075
1 x 1/2	407130	035516	-	-	1.150	1.029	0.602	0.630	0.635	1.625	1.115	0.910	0.115
1 x 3/4	407131	035517	-	-	1.155	1.029	0.804	0.630	0.610	1.625	1.335	1.040	0.132
1-1/4 x 1	407168	051007	-	-	1.280	1.360	1.029	0.970	1.125	1.985	1.625	0.970	0.230
1-1/2 x 1	407211	035594	-	-	1.345	1.590	1.029	1.095	1.125	2.230	1.625	1.155	0.300
2 x 1-1/2	407251	035518	-	-	1.375	2.047	1.590	1.375	1.405	2.715	2.230	1.065	0.461

45° ELBOWS

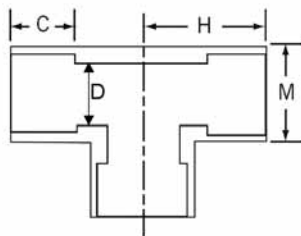
Schedule 40
45° ELBOWS
Soc x Soc



Nom. Pipe Size	White		Gray		CRITICAL DIMENSIONS				
	Univ. Part No.	IPEX Part No.	Univ. Part No.	IPEX Part No.	C	D	H	M	Wt.(lbs)
1/2 x 1/2	417005	035481	417005G	035083	0.905	0.602	1.165	1.115	0.049
3/4 x 3/4	417007	035482	417007G	035084	1.020	0.804	1.375	1.335	0.075
1 x 1	417010	035483	417010G	035085	1.150	1.029	1.500	1.625	0.110
1-1/4 x 1-1/4	417012	035484	417012G	035086	1.270	1.360	1.675	1.985	0.165
1-1/2 x 1-1/2	417015	035485	417015G	035087	1.390	1.590	1.875	2.230	0.218
2 x 2	417020	035486	417020G	035088	1.160	2.047	2.270	2.715	0.300
2-1/2 x 2-1/2	417025	035487	417025G	035089	1.770	2.445	2.245	3.335	0.604
3 x 3	417030	035488	417030G	035090	1.915	3.042	2.685	3.990	0.827
4 x 4	417040	035489	417040G	035091	2.045	3.998	3.065	5.035	1.323
5 x 5	417050	035490	417050G	035092	3.000	5.016	4.375	6.095	2.401
6 x 6	417060	035491	417060G	035093	3.210	6.031	5.035	7.305	3.800
8 x 8	417080	035492	417080G	035094	4.025	7.941	6.220	9.395	6.600
10 x 10	417100	035926	-	-	5.500	9.976	8.065	10.780	10.600
12 x 12	417120	035927	-	-	6.500	11.888	9.565	12.780	32.120

TEES

Schedule 40
TEES
Soc x Soc x Soc

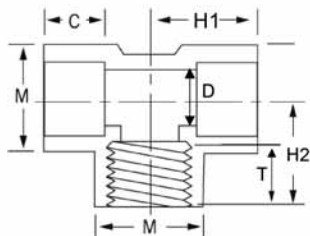


Nom. Pipe Size	White		Gray		CRITICAL DIMENSIONS				
	Univ. Part No.	IPEX Part No.	Univ. Part No.	IPEX Part No.	C	D	H	M	Wt.(lbs)
1/2 x 1/2 x 1/2	401005	035775	401005G	035290	0.900	0.602	1.400	1.065	0.086
3/4 x 3/4 x 3/4	401007	035776	401007G	035291	1.030	0.804	1.585	1.315	0.093
1 x 1 x 1	401010	035777	401010G	035292	1.175	1.029	1.830	1.625	0.203
1-1/4 x 1-1/4 x 1-1/4	401012	035778	401012G	035293	1.280	1.360	2.170	1.980	0.373
1-1/2 x 1-1/2 x 1-1/2	401015	035779	401015G	035294	1.400	1.590	2.415	2.240	0.304
2 x 2 x 2	401020	035780	401020G	035295	1.520	2.047	2.780	2.720	0.765
2-1/2 x 2-1/2 x 2-1/2	401025	035781	401025G	035296	1.775	2.445	3.310	3.310	0.999
3 x 3 x 3	401030	035782	401030G	035297	1.930	3.042	3.880	3.985	1.601
4 x 4 x 4	401040	035783	401040G	035298	2.060	3.998	4.525	5.065	2.593
5 x 5 x 5	401050	035784	401050G	035299	3.000	5.016	6.000	6.065	4.299
6 x 6 x 6	401060	035785	401060G	035300	3.060	6.031	6.595	7.425	5.653
8 x 8 x 8	401080	035786	401080G	035301	4.055	7.941	8.625	9.675	12.172
10 x 10 x 10	401100	035930	-	-	5.500	9.976	11.250	11.500	24.030
12 x 12 x 12	401120	035931	-	-	6.500	11.888	13.385	13.600	36.500

SCHEDULE 40 FITTINGS

TEES

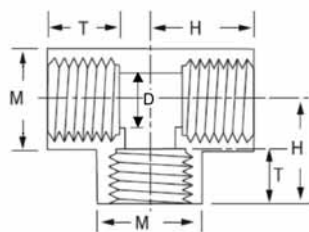
Schedule 40
TEES
Soc x Soc x FPT



Nom. Pipe Size	White		Gray		CRITICAL DIMENSIONS						
	Univ. Part No.	IPEX Part No.	Univ. Part No.	IPEX Part No.	C	D	H1	H2	M	T	Wt.(lbs)
1/2 x 1/2 x 1/2	402005	035851	-	-	0.890	0.602	1.400	1.430	1.065	0.745	0.099
3/4 x 3/4 x 3/4	402007	035852	-	-	1.020	0.804	1.595	1.615	1.315	0.835	0.132
1 x 1 x 1	402010	035853	-	-	1.150	1.029	1.875	1.880	1.625	1.160	0.187
1-1/4 x 1-1/4 x 1-1/4	402012	035854	-	-	1.250	1.360	2.135	2.110	1.980	0.910	0.295
1-1/2 x 1-1/2 x 1-1/2	402015	035855	-	-	1.300	1.590	2.430	2.125	2.240	1.015	0.370
2 x 2 x 2	402020	035856	-	-	1.360	2.047	2.620	2.350	2.720	0.955	0.560
2-1/2 x 2-1/2 x 2-1/2	402025	035857	-	-	1.990	2.445	3.650	3.060	3.310	1.580	1.100
3 x 3 x 3	402030	035858	-	-	1.980	3.042	3.970	3.600	3.985	1.620	1.601
4 x 4 x 4	402040	035859	-	-	2.000	3.998	4.495	4.530	5.065	1.730	2.599

TEES

Schedule 40
TEE
FPT x FPT x FPT

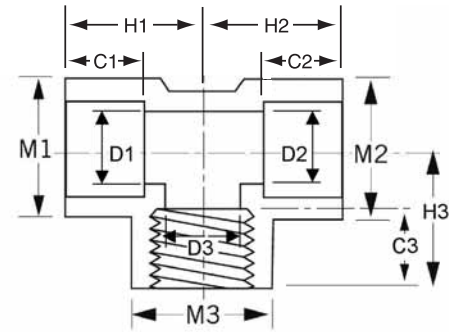


Nom. Pipe Size	White		Gray		CRITICAL DIMENSIONS				
	Univ. Part No.	IPEX Part No.	Univ. Part No.	IPEX Part No.	D	H	M	T	Wt.(lbs)
1/2 x 1/2 x 1/2	405005	035844	-	-	0.602	1.250	1.065	0.750	0.071
3/4 x 3/4 x 3/4	405007	035845	-	-	0.804	1.375	1.315	0.780	0.099
1 x 1 x 1	405010	035846	-	-	1.029	1.655	1.625	0.970	0.190
1-1/4 x 1-1/4 x 1-1/4	405012	035847	-	-	1.360	1.940	1.980	1.000	0.481
1-1/2 x 1-1/2 x 1-1/2	405015	035848	-	-	1.590	2.000	2.240	1.000	0.351
2 x 2 x 2	405020	035849	-	-	2.047	2.315	2.720	1.845	0.540

SCHEDULE 40 FITTINGS

REDUCING TEES

Schedule 40
TEES
Soc x Soc x FPT - Reducing



Nom. Pipe Size	White		Gray		CRITICAL DIMENSIONS													
	Univ. Part No.	IPEX Part No.	Univ. Part No.	IPEX Part No.	C1	C2	C3	D1	D2	D3	H1	H2	H3	M1	M2	M3	Wt.(lbs)	
1/2 x 1/2 x 3/4	402074	035860	-	-	0.750	0.750	0.815	0.602	0.602	0.804	1.405	1.405	1.315	1.065	1.065	1.315	0.090	
3/4 x 1/2 x 1/2	402094	035862	-	-	0.750	0.750	0.750	0.804	0.602	0.602	1.535	1.315	1.440	1.315	1.065	1.065	0.099	
3/4 x 1/2 x 3/4	402095	235019	-	-	0.750	0.750	0.780	0.804	0.602	0.804	1.815	1.375	1.440	1.315	1.065	1.315	0.110	
3/4 x 3/4 x 1/2	402101	035863	402101G	035348	1.000	1.000	0.910	0.804	0.804	0.602	1.565	1.565	1.485	1.315	1.315	1.065	0.121	
1 x 3/4 x 1/2	402124	035687	-	-	1.000	1.000	0.750	1.029	0.804	0.602	1.565	1.530	1.565	1.625	1.315	1.065	0.130	
1 x 1 x 1/2	402130	035865	402130G	235059	1.125	1.155	0.905	1.029	1.029	0.602	1.625	1.655	1.610	1.625	1.625	1.065	0.185	
1 x 1 x 3/4	402131	035866	402166G	035349	1.125	1.155	1.040	1.029	1.029	0.804	1.780	1.780	1.735	1.625	1.625	1.315	0.194	
1-1/4 x 1 x 1/2	402156	035868	-	-	1.280	1.280	0.750	1.360	1.029	0.602	1.780	1.780	1.750	1.980	1.625	1.065	0.181	
1-1/4 x 1 x 1	402158	235020	-	-	1.125	1.125	0.970	1.360	1.029	1.029	2.065	1.940	2.125	1.980	1.625	1.625	0.265	
1-1/4 x 1-1/4 x 1/2	402166	035869	402166G	035350	1.250	1.250	0.905	1.360	1.360	0.602	1.780	1.780	1.805	1.980	1.980	1.065	0.187	
1-1/4 x 1-1/4 x 3/4	402167	035870	402167G	035977	1.250	1.310	1.025	1.360	1.360	0.804	1.845	1.905	1.930	1.980	1.980	1.315	0.212	
1-1/4 x 1-1/4 x 1	402168	035871	402168G	235060	1.250	1.280	1.150	1.360	1.360	1.029	2.065	2.065	2.050	1.980	1.980	1.625	0.280	
1-1/2 x 1-1/4 x 1/2	402199	235021	-	-	1.315	1.315	0.750	1.590	1.360	0.602	1.875	1.875	1.875	2.240	1.980	1.065	0.220	
1-1/2 x 1-1/4 x 3/4	402201	035872	-	-	1.280	1.280	1.000	1.590	1.360	0.804	1.970	1.905	2.155	2.240	1.980	1.315	0.249	
1-1/2 x 1-1/4 x 1	402202	235022	-	-	1.315	1.315	1.125	1.590	1.360	1.029	2.125	2.065	2.250	2.240	1.980	1.625	0.309	
1-1/2 x 1-1/2 x 1/2	402209	035873	402209G	035351	1.315	1.315	0.905	1.590	1.590	0.602	1.750	1.750	1.930	2.240	2.240	1.065	0.240	
1-1/2 x 1-1/2 x 3/4	402210	035874	402210G	035352	1.400	1.400	1.020	1.590	1.590	0.804	2.010	2.010	2.030	2.240	2.240	1.315	0.269	
1-1/2 x 1-1/2 x 1	402211	035875	402211G	035353	1.400	1.400	1.550	1.590	1.590	1.029	2.115	2.115	2.000	2.240	2.240	1.625	0.289	
1-1/2 x 1-1/2 x 1-1/4	402212	035876	-	-	1.280	1.330	1.000	1.590	1.590	1.360	2.280	2.295	2.155	2.240	2.240	1.980	0.351	
2 x 1-1/2 x 3/4	402238	235023	-	-	1.345	1.345	1.000	2.047	1.590	0.804	2.030	1.970	2.405	2.720	2.240	1.315	0.331	
2 x 1-1/2 x 1	402239	235024	-	-	1.375	1.375	1.125	2.047	1.590	1.029	2.190	2.125	2.530	2.720	2.240	1.625	0.375	
2 x 2 x 1/2	402247	035877	-	-	1.375	1.375	0.740	2.047	2.047	0.602	2.025	2.025	1.945	2.720	2.720	1.065	0.300	
2 x 2 x 3/4	402248	035878	402248G	035355	1.525	1.525	1.045	2.047	2.047	0.804	2.155	2.155	2.310	2.720	2.720	1.315	0.370	
2 x 2 x 1	402249	035879	402249G	035556	1.520	1.520	1.155	2.047	2.047	1.029	2.260	2.260	2.345	2.720	2.720	1.625	0.381	
2 x 2 x 1-1/4	402250	035880	-	-	1.380	1.380	0.940	2.047	2.047	1.360	2.370	2.370	2.305	2.720	2.720	1.980	0.419	
2 x 2 x 1-1/2	402251	035881	402251G	235061	1.515	1.515	1.400	2.047	2.047	1.590	2.535	2.535	2.605	2.720	2.720	2.240	0.474	
2-1/2 x 2-1/2 x 1/2	402287	235025	-	-	1.970	1.970	0.750	2.445	2.445	0.602	2.530	2.530	2.405	3.310	3.310	1.065	0.595	
2-1/2 x 2-1/2 x 3/4	402288	035592	-	-	1.970	1.970	0.800	2.445	2.445	0.804	2.645	2.645	2.500	3.310	3.310	1.315	0.639	
2-1/2 x 2-1/2 x 1	402289	035882	-	-	1.975	1.975	1.000	2.445	2.445	1.029	2.790	2.790	2.645	3.310	3.310	1.625	0.679	
2-1/2 x 2-1/2 x 1-1/4	402290	035883	-	-	1.980	2.000	0.985	2.445	2.445	1.360	2.980	2.980	2.690	3.310	3.310	1.980	0.754	
2-1/2 x 2-1/2 x 1-1/2	402291	035884	-	-	1.970	1.970	0.940	2.445	2.445	1.590	3.095	3.095	2.655	3.310	3.310	2.240	0.800	
3 x 3 x 1/2	402333	035885	-	-	1.980	1.980	0.855	3.042	3.042	0.602	2.520	2.520	2.715	3.985	3.985	1.065	0.741	
3 x 3 x 3/4	402334	035886	-	-	1.990	1.990	0.815	3.042	3.042	0.804	2.660	2.660	2.910	3.985	3.985	1.315	0.864	
3 x 3 x 1	402335	035887	-	-	1.980	1.990	1.000	3.042	3.042	1.029	2.790	2.790	2.935	3.985	3.985	1.635	0.871	
3 x 3 x 1-1/4	402336	035888	-	-	1.990	1.990	1.040	3.042	3.042	1.360	2.975	2.975	2.975	3.965	3.965	1.990	0.950	

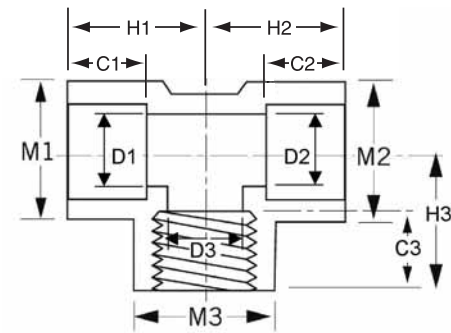
Continued

REDUCING TEES

Schedule 40

TEES

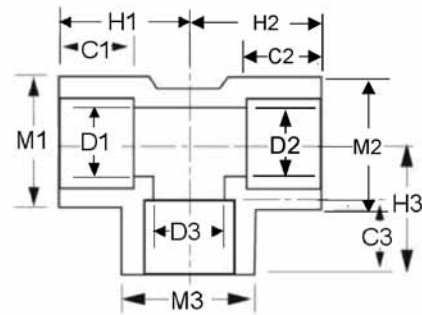
Soc x Soc x FPT - Reducing Cont.



Nom. Pipe Size	White		Gray		CRITICAL DIMENSIONS												
	Univ. Part No.	IPEX Part No.	Univ. Part No.	IPEX Part No.	C1	C2	C3	D1	D2	D3	H1	H2	H3	M1	M2	M3	Wt.(lbs)
3 x 3 x 1-1/2	402337	035889	-	-	1.970	1.970	1.015	3.042	3.042	1.590	3.105	3.105	2.990	3.965	3.965	2.240	1.001
3 x 3 x 2	402338	035890	-	-	1.970	1.970	1.030	3.042	3.042	2.047	3.345	3.345	3.065	3.985	3.985	2.720	1.100
4 x 4 x 1	402417	035891	-	-	2.030	2.030	1.025	3.998	3.998	1.029	2.830	2.830	3.415	5.065	5.065	1.625	1.199
4 x 4 x 1-1/2	402419	035893	-	-	2.000	2.000	1.000	3.998	3.998	1.590	3.125	3.125	3.500	5.065	5.065	2.240	1.400
4 x 4 x 2	402420	035894	-	-	2.020	2.010	1.050	3.998	3.998	2.047	3.390	3.390	3.835	5.065	5.065	2.720	1.446
4 x 4 x 3	402422	035895	-	-	2.085	2.085	1.625	3.998	3.998	3.042	4.040	4.040	4.150	5.065	5.065	3.985	2.108
5 x 5 x 4	402490	235026	-	-	3.030	3.030	1.780	5.016	5.016	3.998	5.530	5.530	4.905	6.095	6.095	5.065	3.704
6 x 6 x 2	402528	035896	-	-	3.470	3.470	1.065	6.031	6.031	2.047	4.845	4.845	4.690	7.430	7.430	2.720	3.600
6 x 6 x 3	402530	235027	-	-	3.015	3.015	1.890	6.031	6.031	3.042	5.655	5.655	5.830	7.430	7.430	3.985	4.550
6 x 6 x 4	402532	035897	-	-	3.025	3.025	2.245	6.031	6.031	3.998	5.855	5.855	5.775	7.430	7.430	5.065	4.960
8 x 8 x 3	402580	235028	-	-	4.040	4.040	1.970	7.941	7.941	3.042	6.025	6.025	6.755	9.315	9.315	3.985	7.690
8 x 8 x 4	402582	035898	-	-	4.055	4.055	2.015	7.941	9.941	3.998	6.555	6.555	6.645	9.315	9.315	5.065	11.200

REDUCING TEES

Schedule 40
TEES
Soc x Soc x Soc - Reducing

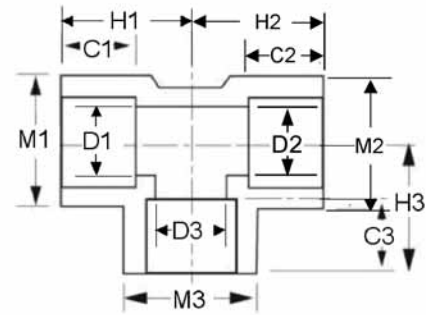


Nom. Pipe Size	White		Gray		CRITICAL DIMENSIONS													
	Univ. Part No.	IPEX Part No.	Univ. Part No.	IPEX Part No.	C1	C2	C3	D1	D2	D3	H1	H2	H3	M1	M2	M3	Wt.(lbs)	
1/2 x 1/2 x 3/4	401074	035789	-	-	0.750	0.750	1.000	0.602	0.602	0.804	1.315	1.315	1.565	1.065	1.065	1.315	0.099	
1/2 x 1/2 x 1	401075	035354	-	-	0.750	0.750	1.125	0.602	0.602	1.029	1.530	1.530	1.655	1.065	1.065	1.625	0.110	
3/4 x 1/2 x 1/2	401094	035790	-	-	1.000	0.750	0.750	0.804	0.602	0.602	1.565	1.250	1.405	1.315	1.065	1.065	0.079	
3/4 x 1/2 x 3/4	401095	235007	-	-	1.000	0.750	0.780	0.804	0.602	0.804	1.815	1.375	1.470	1.315	1.065	1.315	0.110	
3/4 x 3/4 x 1/2	401101	035792	-	-	0.805	0.805	0.750	0.804	0.804	0.602	1.585	1.585	1.485	1.315	1.315	1.065	0.110	
3/4 x 3/4 x 1	401102	035791	-	-	1.000	1.000	1.125	0.804	0.804	1.029	1.815	1.815	1.815	1.315	1.315	1.625	0.110	
1 x 1/2 x 1	401122	235008	-	-	1.125	0.780	1.125	1.029	0.602	1.059	1.940	1.500	1.970	1.625	1.065	1.625	0.150	
1 x 3/4 x 1/2	401124	235009	-	-	1.125	1.000	0.750	1.029	0.804	0.602	1.655	1.530	1.595	1.625	1.315	1.065	0.132	
1 x 3/4 x 3/4	401125	035994	-	-	1.125	1.000	1.000	1.029	0.804	0.804	1.780	1.655	1.780	1.625	1.315	1.315	0.141	
1 x 3/4 x 1	401126	035962	-	-	1.125	1.000	1.125	1.029	0.804	1.029	1.905	1.945	1.905	1.625	1.315	1.625	0.161	
1 x 1 x 1/2	401130	035794	401130G	035307	1.155	1.155	0.910	1.029	1.029	0.602	1.850	1.850	1.620	1.625	1.625	1.065	0.130	
1 x 1 x 3/4	401131	035795	401131G	035308	1.300	1.300	1.300	1.029	1.029	0.804	1.880	1.880	1.780	1.625	1.625	1.315	0.187	
1 x 1 x 1-1/4	401132	035989	-	-	1.125	1.125	1.250	1.029	1.029	1.360	2.095	2.095	2.095	1.625	1.625	1.980	0.220	
1 x 1 x 1-1/2	401133	035793	-	-	1.125	1.125	1.280	1.029	1.029	1.590	2.250	2.250	2.065	1.625	1.625	2.240	0.249	
1-1/4 x 1 x 1/2	401156	235010	-	-	1.125	1.125	0.750	1.360	1.029	0.602	1.780	1.655	1.750	1.980	1.625	1.065	0.176	
1-1/4 x 1 x 3/4	401157	035796	-	-	1.280	1.125	1.000	1.360	1.029	0.804	1.905	1.780	2.000	1.980	1.625	1.315	0.220	
1-1/4 x 1 x 1	401158	235011	-	-	1.250	1.125	1.095	1.360	1.029	1.029	2.065	2.000	2.095	1.980	1.625	1.625	0.265	
1-1/4 x 1-1/4 x 1/2	401166	035797	401166G	035311	1.270	1.270	0.900	1.360	1.360	0.602	1.775	1.775	1.870	1.980	1.980	1.065	0.187	
1-1/4 x 1-1/4 x 3/4	401167	035798	401167G	035312	1.270	1.270	1.030	1.360	1.360	0.804	1.885	1.885	2.000	1.980	1.980	1.315	0.220	
1-1/4 x 1-1/4 x 1	401168	035799	401168G	035313	1.460	1.460	1.320	1.360	1.360	1.029	2.210	2.210	2.230	1.980	1.980	1.625	0.251	
1-1/4 x 1-1/4 x 1-1/2	401169	235012	-	-	1.250	1.250	1.315	1.360	1.360	1.590	2.345	2.345	2.315	1.980	1.980	2.240	0.300	
1-1/4 x 1-1/4 x 2	401170	235013	-	-	1.250	1.250	1.375	1.360	1.360	2.047	2.595	2.595	2.375	1.980	1.980	2.720	0.380	
1-1/2 x 1-1/4 x 1/2	401199	235014	-	-	1.095	0.970	0.750	1.590	1.360	0.602	1.845	1.780	1.875	2.240	1.980	1.065	0.440	
1-1/2 x 1-1/4 x 3/4	401201	235015	-	-	1.315	1.315	1.030	1.590	1.360	0.804	1.940	1.940	2.125	2.240	1.980	1.315	0.243	
1-1/2 x 1-1/4 x 1	401202	035959	-	-	1.315	1.315	1.125	1.590	1.360	1.029	2.125	2.065	2.280	2.240	1.980	1.625	0.291	
1-1/2 x 1-1/2 x 1/2	401209	035800	401209G	035315	1.315	1.315	0.750	1.590	1.590	0.602	1.845	1.845	1.780	2.240	2.240	1.065	0.234	
1-1/2 x 1-1/2 x 3/4	401210	035801	401210G	035316	1.400	1.400	1.030	1.590	1.590	0.804	2.010	2.010	1.905	2.240	2.240	1.315	0.287	
1-1/2 x 1-1/2 x 1	401211	035802	401211G	035317	1.610	1.610	1.305	1.590	1.590	1.029	2.430	2.430	2.385	2.240	2.240	1.625	0.320	
1-1/2 x 1-1/2 x 1-1/4	401212	035803	401212G	035318	1.305	1.305	1.245	1.590	1.590	1.360	2.295	2.295	2.385	2.240	2.240	1.980	0.340	
1-1/2 x 1-1/2 x 2	401213	035082	-	-	1.315	1.315	1.375	1.590	1.590	2.047	2.655	2.655	2.500	2.240	2.240	2.720	0.441	
1-1/2 x 1-1/2 x 2-1/2	401214	235016	-	-	1.280	1.280	2.000	1.590	1.590	2.445	2.655	2.655	3.065	2.240	2.240	3.310	0.480	
2 x 1-1/2 x 3/4	401238	235017	-	-	1.345	1.345	1.000	2.047	1.590	0.804	2.000	2.000	2.405	2.720	2.240	1.315	0.309	
2 x 1-1/2 x 1	401239	035804	-	-	1.375	1.305	1.120	2.047	1.590	1.029	2.175	2.135	2.400	2.720	2.240	1.625	0.410	
2 x 1-1/2 x 1-1/2	401241	035805	-	-	1.375	1.280	1.280	2.047	1.590	1.590	2.375	2.315	2.565	2.720	2.240	2.240	0.430	
2 x 2 x 1/2	401247	035806	401247G	035319	1.515	1.515	0.905	2.047	2.047	0.602	2.045	2.045	2.140	2.720	2.720	1.065	0.320	

Continued

REDUCING TEES

Schedule 40
TEES
Soc x Soc x Soc - Reducing Cont.



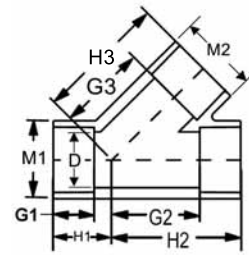
Nom. Pipe Size	White		Gray		CRITICAL DIMENSIONS													
	Univ. Part No.	IPEX Part No.	Univ. Part No.	IPEX Part No.	C1	C2	C3	D1	D2	D3	H1	H2	H3	M1	M2	M3	Wt.(lbs)	
2 x 2 x 3/4	401248	035807	401248G	035320	1.520	1.520	1.020	2.047	2.047	0.804	2.160	2.160	2.330	2.720	2.720	1.315	0.320	
2 x 2 x 1	401249	035808	401249G	035321	1.250	1.250	0.870	2.047	2.047	1.029	2.000	2.000	2.100	2.720	2.720	1.625	0.340	
2 x 2 x 1-1/4	401250	035809	-	-	1.365	1.365	1.250	2.047	2.047	1.360	2.360	2.360	2.560	2.720	2.720	1.980	0.430	
2 x 2 x 1-1/2	401251	035810	401251G	035322	1.250	1.250	1.130	2.047	2.047	1.590	2.250	2.250	2.340	2.720	2.720	2.240	0.397	
2-1/2 x 2-1/2 x 1/2	401287	035811	-	-	1.990	1.990	0.750	2.445	2.445	0.602	2.575	2.575	2.185	3.310	3.310	1.065	0.560	
2-1/2 x 2-1/2 x 3/4	401288	035812	-	-	1.980	1.980	0.990	2.445	2.445	0.804	2.650	2.650	2.475	3.310	3.310	1.315	0.595	
2-1/2 x 2-1/2 x 1	401289	035813	-	-	1.980	1.980	1.115	2.445	2.445	1.029	2.795	2.795	2.620	3.310	3.310	1.625	0.679	
2-1/2 x 2-1/2 x 1-1/4	401290	035814	-	-	1.980	1.980	1.240	2.445	2.445	1.360	2.975	2.975	2.850	3.310	3.310	1.980	0.750	
2-1/2 x 2-1/2 x 1-1/2	401291	035815	-	-	1.965	1.965	1.300	2.445	2.445	1.590	3.105	3.105	2.875	3.310	3.310	2.240	0.800	
2-1/2 x 2-1/2 x 2	401292	035816	-	-	1.750	1.750	1.375	2.445	2.445	2.047	3.250	3.250	3.010	3.310	3.310	2.720	0.955	
3 x 3 x 1/2	401333	035817	-	-	1.980	1.980	0.740	3.042	3.042	0.602	2.525	2.525	2.505	3.985	3.985	1.065	0.721	
3 x 3 x 3/4	401334	035818	-	-	1.970	1.970	1.000	3.042	3.042	0.804	2.650	2.650	3.015	3.985	3.985	1.315	0.816	
3 x 3 x 1	401335	035819	401335G	035326	1.985	1.985	1.120	3.042	3.042	1.029	2.755	2.755	2.940	3.985	3.985	1.625	0.800	
3 x 3 x 1-1/4	401336	035820	-	-	1.985	1.985	1.240	3.042	3.042	1.360	2.970	2.970	3.110	3.985	3.985	1.980	0.939	
3 x 3 x 1-1/2	401337	035821	401337G	035327	1.985	1.985	1.310	3.042	3.042	1.590	3.090	3.090	3.120	3.985	3.985	2.240	0.959	
3 x 3 x 2	401338	035822	401338G	035328	1.905	1.900	1.510	3.042	3.042	2.047	3.405	3.405	3.350	3.985	3.985	2.720	1.070	
3 x 3 x 2-1/2	401339	035823	401339G	035329	2.290	2.290	2.010	3.042	3.042	2.445	3.820	3.820	3.875	3.985	3.985	3.310	1.325	
3 x 3 x 4	401342	235018	-	-	2.000	2.000	2.000	3.042	3.042	3.998	4.500	4.500	4.000	3.985	3.985	5.065	1.780	
4 x 4 x 3/4	401416	035824	-	-	2.015	2.015	0.985	3.998	3.998	0.804	2.650	2.650	3.285	5.065	5.065	1.315	1.100	
4 x 4 x 1	401417	035825	-	-	2.005	2.005	1.235	3.998	3.998	1.029	2.825	2.825	3.595	5.065	5.065	1.625	1.190	
4 x 4 x 1-1/4	401418	035826	-	-	2.005	2.005	1.245	3.998	3.998	1.360	2.985	2.985	3.540	5.065	5.065	1.980	1.199	
4 x 4 x 1-1/2	401419	035827	-	-	2.030	2.030	1.285	3.998	3.998	1.590	3.175	3.175	3.670	5.065	5.065	2.240	1.400	
4 x 4 x 2	401420	035828	401420G	035331	2.255	2.255	1.510	3.998	3.998	2.047	4.425	4.425	4.095	5.065	5.065	2.720	3.188	
4 x 4 x 3	401422	035829	401422G	035332	2.270	2.270	1.895	3.998	3.998	3.042	4.495	4.495	4.200	5.065	5.065	3.985	2.277	
5 x 5 x 2	401486	035956	-	-	3.000	3.000	1.375	5.016	5.016	2.047	4.375	4.375	4.440	6.095	6.095	2.720	2.299	
5 x 5 x 3	401488	035830	-	-	3.030	3.030	1.970	5.016	5.016	3.042	5.030	5.030	4.970	6.095	6.095	3.985	3.100	
5 x 5 x 4	401490	035831	-	-	3.000	3.000	1.970	5.016	5.016	3.998	5.565	5.565	5.000	6.095	6.095	5.065	3.699	
6 x 6 x 2	401528	035832	-	-	3.460	3.460	1.365	6.031	6.031	2.047	4.845	4.845	4.960	7.585	7.585	2.720	3.400	
6 x 6 x 3	401530	035833	401530G	035334	3.000	3.000	1.880	6.031	6.031	3.042	5.815	5.815	5.640	7.585	7.585	3.985	6.583	
6 x 6 x 4	401532	035834	401532G	035335	3.010	3.010	2.265	6.031	6.031	3.998	5.845	5.845	5.760	7.585	7.585	5.065	6.576	
8 x 8 x 3	401580	035835	-	-	4.030	4.030	1.970	7.941	7.941	3.042	6.000	6.000	6.655	9.265	9.265	3.985	7.599	
8 x 8 x 4	401582	035836	-	-	4.000	4.000	2.000	7.941	7.941	3.998	6.530	6.530	6.690	9.265	9.265	5.065	8.100	
8 x 8 x 6	401585	035837	-	-	4.085	4.085	3.090	7.941	7.941	6.031	7.740	7.740	7.690	9.265	9.265	7.585	15.399	

WYE

Schedule 40

45° WYE

Soc x Soc x Soc



Nom. Pipe Size	White		Gray		CRITICAL DIMENSIONS									
	Univ. Part No.	IPEX Part No.	Univ. Part No.	IPEX Part No.	D	G1	G2	G3	H1	H2	H3	M1	M2	Wt.(lbs)
1-1/2 x 1-1/2 x 1-1/2	475015	035912	-	-	1.590	0.500	2.565	2.595	1.875	3.940	3.970	2.345	2.345	0.750
2 x 2 x 2	475020	035913	-	-	2.047	0.595	3.220	3.220	2.125	4.375	4.375	2.875	2.875	1.199
3 x 3 x 3	475030	035915	-	-	3.042	1.070	4.440	3.585	2.945	6.315	5.460	4.115	4.115	2.599
4 x 4 x 4	475040	035916	-	-	3.998	1.320	5.675	4.600	3.570	7.925	6.850	5.190	5.190	4.500
6 x 6 x 6	475060	035917	-	-	6.031	1.875	8.305	6.745	4.875	11.300	9.740	7.510	7.510	12.000

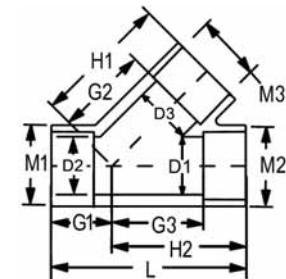
SCHEDULE 40 FITTINGS

SCHEDULE 40 FITTINGS

Schedule 40

45° WYE

Soc x Soc x Soc - Reducing



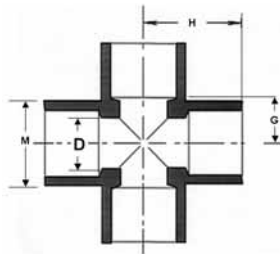
Nom. Pipe Size	White		Gray		CRITICAL DIMENSIONS												
	Univ. Part No.	IPEX Part No.	Univ. Part No.	IPEX Part No.	D1	D2	D3	G1	G2	G3	H1	H2	L	M1	M2	M3	Wt.(lbs)
6 x 6 x 4	475532	035922	-	-	6.031	6.031	3.998	2.875	9.750	8.875	12.000	12.125	18.250	7.250	7.500	5.000	8.699

CROSSES

Schedule 40

CROSSES

Soc x Soc x Soc x Soc



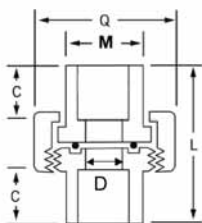
Nom. Pipe Size	White		Gray		CRITICAL DIMENSIONS				
	Univ. Part No.	IPEX Part No.	Univ. Part No.	IPEX Part No.	D	G	H	M	Wt.(lbs)
1/2 x 1/2 x 1/2 x 1/2	420005	035469	420005G	035068	0.602	0.530	1.280	1.510	0.097
3/4 x 3/4 x 3/4 x 3/4	420007	035470	420007G	035069	0.804	0.655	1.655	1.710	0.132
1 x 1 x 1 x 1	420010	035471	420010G	035070	1.029	0.815	1.940	1.985	0.247
1-1/4 x 1-1/4 x 1-1/4 x 1-1/4	420012	035472	420012G	035071	1.360	1.125	2.345	2.435	0.440
1-1/2 x 1-1/2 x 1-1/2 x 1-1/2	420015	035473	420015G	035072	1.590	1.280	2.565	2.715	0.560
2 x 2 x 2 x 2	420020	035474	420020G	035073	2.047	1.530	2.905	3.100	0.890
2-1/2 x 2-1/2 x 2-1/2 x 2-1/2	420025	035475	420025G	035074	2.445	1.655	3.625	3.580	1.550
3 x 3 x 3 x 3	420030	035476	420030G	035075	3.042	1.940	3.940	4.190	1.936
4 x 4 x 4 x 4	420040	035477	420040G	035076	3.998	2.500	4.500	5.000	3.100

UNIONS

Schedule 40

UNIONS

Soc x Soc Buna O-Ring Seal



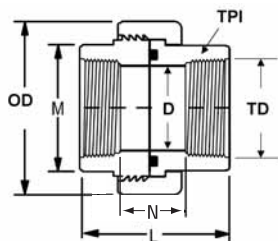
Nom. Pipe Size	White		Gray		CRITICAL DIMENSIONS					
	Univ. Part No.	IPEX Part No.	Univ. Part No.	IPEX Part No.	C	D	L	M	Q	Wt.(lbs)
1/2 x 1/2	457005	035900	-	-	0.905	0.602	2.305	1.155	1.990	0.152
3/4 x 3/4	457001	035901	-	-	1.010	0.804	2.595	1.385	2.370	0.227
1 x 1	457010	035902	-	-	1.150	1.029	2.880	1.710	3.665	0.470
1-1/4 x 1-1/4	457012	035903	-	-	1.240	1.360	3.390	2.080	3.090	0.467
1-1/2 x 1-1/2	457015	035904	-	-	1.385	1.590	3.835	2.345	3.795	0.809
2 x 2	457020	035905	-	-	1.530	2.047	4.205	2.870	4.825	1.369

UNIONS

Schedule 40

UNIONS

FPT x FPT Buna O-Ring Seal



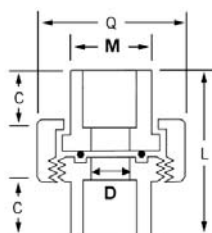
Nom. Pipe Size	White		Gray		CRITICAL DIMENSIONS							
	Univ. Part No.	IPEX Part No.	Univ. Part No.	IPEX Part No.	D	L	N	OD	M	TD	TPI	Wt.(lbs)
1/2 x 1/2	458005	035906	-	-	0.602	1.095	0.345	2.000	1.155	0.840	14.000	0.141
3/4 x 3/4	458007	035907	-	-	0.804	2.345	0.750	2.155	1.385	1.050	14.000	0.170
1 x 1	458010	035908	-	-	1.029	2.720	0.720	2.565	1.710	1.315	11.500	0.269
1-1/4 x 1-1/4	458012	035909	-	-	1.360	2.970	0.970	3.000	2.080	1.660	11.500	0.379
1-1/2 x 1-1/2	458015	035910	-	-	1.590	3.065	2.250	3.280	2.345	1.900	11.500	0.450
2 x 2	458020	035911	-	-	2.047	3.220	1.095	3.750	2.870	2.375	11.500	0.591

Note: TPI = Threads Per Inch

Schedule 40

UNIONS

Soc x Soc EPDM O-Ring Seal



Nom. Pipe Size	White		Gray		CRITICAL DIMENSIONS					
	Univ. Part No.	IPEX Part No.	Univ. Part No.	IPEX Part No.	N	D	L	M	Q	Wt.(lbs)
1/2 x 1/2	497005	235001	-	-	0.345	0.602	1.845	1.095	2.000	0.140
3/4 x 3/4	497007	235002	-	-	0.750	0.804	2.345	1.315	2.155	0.180
1 x 1	497010	235003	-	-	0.720	1.029	2.720	1.655	2.565	0.270
1-1/4 x 1-1/4	497012	235004	-	-	0.970	1.360	2.970	2.000	3.000	0.390
1-1/2 x 1-1/2	497015	235005	-	-	0.940	1.590	3.065	2.250	3.280	0.440
2 x 2	497020	235006	-	-	1.095	2.047	3.220	2.780	3.750	0.590

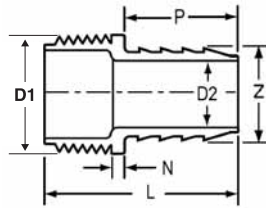
SCHEDULE 40 FITTINGS

ADAPTERS

Schedule 40

ADAPTERS

Hose Adapter – Insert x MPT

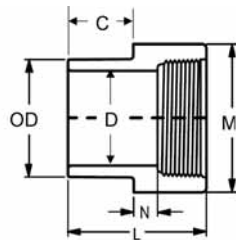


Nom. Pipe Size	White		Gray		CRITICAL DIMENSIONS						
	Univ. Part No.	IPEX Part No.	Univ. Part No.	IPEX Part No.	D1	D2	L	P	N	Z	Wt.(lbs)
1/2	-	-	1436005G	035157	0.840	0.602	2.440	1.250	0.250	0.650	0.020
3/4	-	-	1436007G	035158	1.050	0.804	2.530	1.250	0.250	0.850	0.040
1	-	-	1436010G	035159	1.315	1.029	2.595	1.250	0.220	1.080	0.060
1-1/4	-	-	1436012G	035160	1.660	1.360	2.565	1.250	0.190	1.410	0.040
1-1/2	-	-	1436015G	035161	1.900	1.590	3.065	1.500	0.345	1.650	0.130
2	-	-	1436020G	035162	2.375	2.047	2.815	1.500	0.125	2.105	0.140
2-1/2	-	-	1436025G	035163	2.875	2.445	4.155	2.000	0.405	2.505	0.340
3	-	-	1436030G	035164	3.500	3.042	4.280	2.125	0.405	3.105	0.460
4	-	-	1436040G	035165	4.500	3.998	5.250	3.000	0.405	4.065	0.740

Schedule 40

ADAPTERS

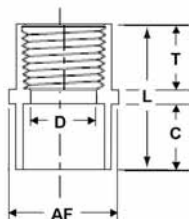
Spig x FPT



Nom. Pipe Size	White		Gray		CRITICAL DIMENSIONS						
	Univ. Part No.	IPEX Part No.	Univ. Part No.	IPEX Part No.	C	D	L	M	N	OD	Wt.(lbs)
1/2 x 1/2	478005	035578	478005G	035148	0.875	0.602	1.750	1.155	0.190	0.840	0.040
3/4 x 3/4	478007	035579	478007G	035149	1.000	0.804	1.940	1.375	0.155	1.050	0.060
1 x 1	478010	035580	478010G	035150	1.125	1.029	2.440	1.720	0.220	1.315	0.099
1-1/4 x 1-1/4	478012	035581	478012G	035151	1.250	1.360	2.565	2.065	0.280	1.660	0.141
1-1/2 x 1-1/2	478015	035582	478015G	035152	1.375	1.590	2.625	2.315	0.220	1.900	0.170
2 x 2	478020	035583	478020G	035153	1.500	2.047	2.750	2.815	0.250	3.375	0.260
2-1/2 x 2-1/2	478025	035584	-	-	1.750	2.445	3.985	3.320	0.385	2.875	0.571
3 x 3	478030	035585	478030G	035155	1.875	3.042	3.875	4.000	0.280	3.500	0.570
4 x 4	478040	035586	478040G	035156	2.250	3.998	4.000	5.000	0.375	4.500	0.830

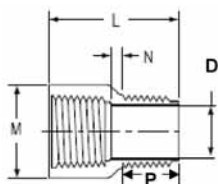
ADAPTERS

Schedule 40
ADAPTERS
Soc x FPT



Nom. Pipe Size	White		Gray		CRITICAL DIMENSIONS					
	Univ. Part No.	IPEX Part No.	Univ. Part No.	IPEX Part No.	AF	C	D	L	T	Wt.(lbs)
1/2 x 1/2	435005	035559	436005G	035136	1.165	0.695	0.602	1.720	0.790	0.040
3/4 x 3/4	435007	035560	436007G	035137	1.310	1.000	0.804	1.910	0.805	0.053
1 x 1	435010	035561	436010G	035138	1.780	1.050	1.029	2.285	0.970	0.079
1-1/4 x 1-1/4	435012	035562	436012G	035139	2.160	1.155	1.360	2.420	0.970	0.110
1-1/2 x 1-1/2	435015	035563	436015G	035140	2.400	1.095	1.590	2.430	1.050	0.152
2 x 2	435020	035564	436020G	035141	2.960	1.155	2.047	2.535	1.045	0.190
2-1/2 x 2-1/2	435025	035565	436025G	035142	3.585	1.780	2.445	3.350	1.210	0.514
3 x 3	435030	035566	436030G	035143	4.020	2.160	3.042	4.080	1.550	0.582
4 x 4	435040	035567	436040G	035144	5.080	2.200	3.998	4.200	1.635	0.882
5 x 5	435050	035568	436050G	035145	6.140	3.000	5.016	5.280	2.020	1.631
6 x 6	435060	035569	436060G	035146	7.270	3.000	6.031	5.280	3.030	2.068
8 x 8	435080	035570	-	-	9.385	4.425	7.941	6.935	2.110	3.801

Schedule 40
ADAPTERS
Riser Extension – FPT x MPT

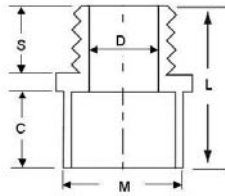


Nom. Pipe Size	White		Gray		CRITICAL DIMENSIONS					
	Univ. Part No.	IPEX Part No.	Univ. Part No.	IPEX Part No.	D	M	L	N	P	Wt.(lbs)
1/2	434005	035591	-	-	0.602	1.095	1.500	0.155	1.250	0.030
3/4	434007	035944	-	-	0.804	1.315	1.625	0.125	1.250	0.040
1	434010	035947	-	-	1.029	1.595	1.940	0.190	1.250	0.070

SCHEDULE 40 FITTINGS

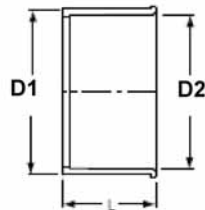
ADAPTERS

Schedule 40
ADAPTERS
Soc x MPT



Nom. Pipe Size	White		Gray		CRITICAL DIMENSIONS					
	Univ. Part No.	IPEX Part No.	Univ. Part No.	IPEX Part No.	C	D	L	M	S	Wt.(lbs)
3/8 x 3/8	436003	035934	-	-	0.760	0.473	1.360	0.875	0.585	0.020
1/2 x 1/2	436005	035602	436005G	035167	0.895	0.602	1.895	1.120	0.765	0.031
3/4 x 3/4	436007	035603	436007G	035168	1.020	0.804	2.080	1.355	0.825	0.049
1 x 1	436010	035604	436010G	035169	1.135	1.029	2.365	1.675	0.990	0.070
1-1/4 x 1-1/4	436012	035605	436012G	035170	1.270	1.360	2.590	2.055	1.025	0.110
1-1/2 x 1-1/2	436015	035606	436015G	035171	1.395	1.590	2.720	2.350	1.020	0.148
2 x 2	436020	035607	436020G	035172	1.515	2.047	2.910	2.805	1.085	0.180
2-1/2 x 2-1/2	436025	035608	436025G	035173	1.775	2.445	3.495	3.330	1.425	0.406
3 x 3	436030	035609	436030G	035174	1.900	3.042	3.880	3.985	1.595	0.545
4 x 4	436040	035610	436040G	035175	2.270	3.998	4.375	5.000	1.730	0.840
5 x 5	436050	035611	436050G	035176	3.325	5.016	5.150	6.110	1.825	1.400
6 x 6	436060	035612	436060G	035177	3.060	6.031	5.560	7.240	1.755	2.262
8 x 8	436080	035613	-	-	4.860	7.941	6.980	9.370	2.120	4.101

Schedule 40
ADAPTERS
IPS to PIP Adapter – Spig x Soc



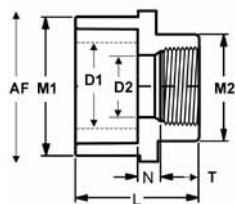
Nom. Pipe Size	White		Gray		CRITICAL DIMENSIONS			
	Univ. Part No.	IPEX Part No.	Univ. Part No.	IPEX Part No.	D1	D2	L	Wt.(lbs)
6	431060	235045	-	-	6.625	6.140	3.690	0.930
8	431080	235046	-	-	8.625	8.160	4.655	1.390

REDUCING ADAPTERS

Schedule 40

ADAPTERS

Soc x FPT - Reducing

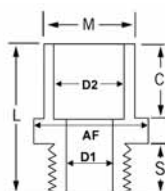


Nom. Pipe Size	White		Gray		CRITICAL DIMENSIONS								
	Univ. Part No.	IPEX Part No.	Univ. Part No.	IPEX Part No.	AF	D1	D2	L	M1	M2	N	T	Wt.(lbs)
1/2 x 1/4	435072	035571	-	-	1.065	0.602	0.344	1.440	1.065	0.815	0.095	0.655	0.031
1/2 x 3/8	435073	035951	-	-	1.095	0.602	0.473	1.875	1.095	0.940	0.065	1.125	0.040
1/2 x 3/4	435074	035572	-	-	1.420	0.602	0.804	1.900	1.105	1.330	0.130	1.015	0.050
3/4 x 1/2	435101	035992	-	-	1.300	0.804	0.602	1.750	1.280	1.060	0.190	0.845	0.050
3/4 x 1/2	435102	035990	-	-	1.740	0.804	1.029	2.095	1.315	1.625	0.095	1.280	0.070
1 x 3/4	435131	035958	-	-	1.625	1.029	0.804	2.125	1.625	1.315	0.250	1.000	0.071

Schedule 40

ADAPTERS

Soc x MPT - Reducing

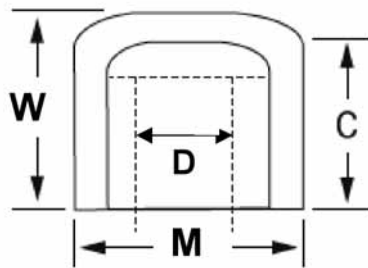


Nom. Pipe Size	White		Gray		CRITICAL DIMENSIONS							
	Univ. Part No.	IPEX Part No.	Univ. Part No.	IPEX Part No.	C	D1	D2	AF	L	M	S	Wt.(lbs)
3/4 x 1/2	436074	035614	-	-	0.720	0.602	1.050	1.500	2.005	1.410	1.160	0.050
1/2 x 3/4	436101	035615	-	-	0.720	0.804	0.840	1.250	1.530	1.125	0.720	0.031
1 x 3/4	436102	035616	-	-	0.875	0.804	1.315	1.750	2.095	1.625	1.220	0.071
3/4 x 1	436131	035617	-	-	0.875	1.029	1.050	1.500	2.380	1.415	1.380	0.050
1-1/4 x 1	436132	035618	-	-	0.940	1.029	1.660	2.000	2.280	1.970	1.125	0.099
1 x 1-1/4	436168	035380	-	-	0.940	1.360	1.315	1.750	2.125	1.625	0.875	0.079
1-1/2 x 1-1/4	436169	035593	-	-	1.095	1.360	1.900	2.250	2.375	2.220	1.220	0.119
1-1/4 x 1-1/2	436212	035619	-	-	1.095	1.590	1.660	2.125	2.470	2.000	1.155	0.119
2 x 1-1/2	436213	035620	-	-	1.155	1.590	2.375	2.750	2.625	2.720	1.250	0.181
1-1/2 x 2	436251	035973	-	-	1.155	2.047	1.900	2.375	2.925	2.370	1.425	0.249
2-1/2 x 2	436252	235041	-	-	1.750	2.047	2.875	3.375	2.970	3.315	1.470	0.397
3 x 2-1/2	436294	235042	-	-	1.875	2.445	3.500	4.000	3.815	3.970	1.625	0.595
4 x 2-1/2	436296	235043	-	-	2.000	2.445	4.500	5.125	3.875	5.000	1.750	0.816
4 x 3	436342	235044	-	-	2.000	3.042	4.500	5.125	3.940	5.000	1.690	0.794

SCHEDULE 40 FITTINGS

CAPS

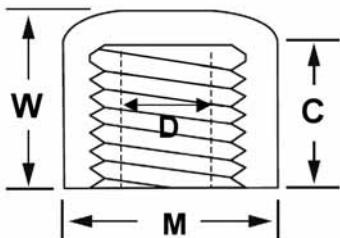
Schedule 40
CAPS
Soc Cap



Nom. Pipe Size	White		Gray		CRITICAL DIMENSIONS				
	Univ. Part No.	IPEX Part No.	Univ. Part No.	IPEX Part No.	C	D	M	W	Wt.(lbs)
3/8	447003	035406	447003G	035590	0.865	0.473	0.880	1.000	0.010
1/2	447005	035407	447005G	035017	0.900	0.602	1.100	1.300	0.031
1	447007	035408	447007G	035018	1.035	0.804	1.320	1.455	0.040
1-1/4	447010	035409	447010G	035019	1.135	1.029	1.640	1.495	0.071
1-1/2	447012	035410	447012G	035020	1.240	1.360	2.000	1.615	0.090
2	447015	035411	447015G	035021	1.370	1.590	2.250	1.745	0.130
2-1/2	447020	035412	447020G	035022	1.535	2.047	2.725	2.125	0.185
2	447025	035413	447025G	035023	1.785	2.445	3.380	2.500	0.330
3	447030	035414	447030G	035024	1.910	3.042	3.995	2.590	0.527
4	447040	035415	447040G	035025	2.240	3.998	5.065	3.200	0.770
5	447050	035416	447050G	035026	4.060	5.016	6.110	4.425	1.400
6	447060	035417	447060G	035027	3.050	6.031	7.365	4.815	2.030
8	447080	035418	447080G	035028	4.075	7.941	9.370	5.745	3.788

CAPS

Schedule 40
CAPS
FPT Cap

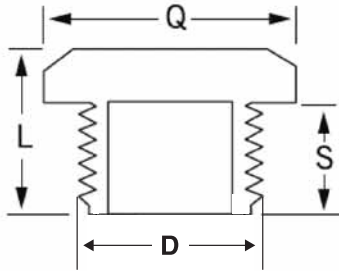


Nom. Pipe Size	White		Gray		CRITICAL DIMENSIONS				
	Univ. Part No.	IPEX Part No.	Univ. Part No.	IPEX Part No.	C	D	M	W	Wt.(lbs)
3/8	448003	035948	-	-	0.635	0.473	0.940	0.780	0.020
1/2	448005	035423	448005G	035032	0.755	0.602	1.295	1.200	0.030
3/4	448007	035424	448007G	035033	0.760	0.804	1.515	1.260	0.030
1	448010	035425	448010G	035034	0.955	1.029	1.820	1.560	0.060
1-1/4	448012	035426	448012G	035035	1.010	1.360	2.235	1.515	0.090
1-1/2	448015	035427	448015G	035036	1.095	1.590	2.485	1.560	0.110
2	448020	035428	448020G	035037	1.155	2.047	3.035	1.710	0.170
2-1/2	448025	035429	-	-	1.750	2.445	3.300	2.210	0.331
3	448030	035430	448030G	035038	1.875	3.042	3.975	2.400	0.483
4	448040	035431	448040G	035039	2.300	3.998	5.010	2.670	0.791
5	448050	035432	-	-	3.000	5.016	6.125	3.095	1.400
6	448060	035433	-	-	3.000	6.031	7.190	3.155	1.499

SCHEDULE 40 FITTINGS

PLUGS

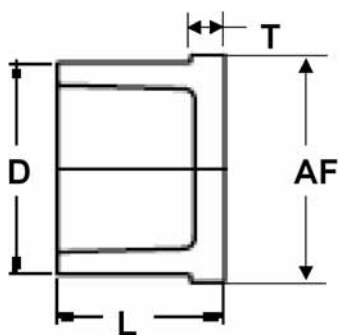
Schedule 40
PLUGS
MPT Plug



Nom. Pipe Size	White		Gray		CRITICAL DIMENSIONS				
	Univ. Part No.	IPEX Part No.	Univ. Part No.	IPEX Part No.	D	L	Q	S	Wt.(lbs)
3/8	450003	035621	-	-	0.675	0.785	0.805	0.605	0.010
1/2	450005	035622	450005G	035188	0.840	0.875	0.865	0.690	0.020
3/4	450007	035623	450007G	035189	1.050	0.875	1.180	0.640	0.031
1	450010	035624	450010G	035190	1.315	1.205	1.690	0.905	0.062
1-1/4	450012	035625	450012G	035191	1.660	1.300	1.845	1.015	0.079
1-1/2	450015	035626	450015G	035192	1.900	1.215	2.080	0.920	0.110
2	450020	035627	450020G	035193	2.375	1.440	1.810	1.010	0.207
2-1/2	450025	035628	450025G	035194	2.875	1.775	3.115	1.415	0.311
3	450030	035629	450030G	035195	3.500	1.840	3.740	1.475	0.390
4	450040	035630	450040G	035196	4.500	2.130	4.735	1.725	0.721
6	450060	235047	-	-	6.625	2.110	6.850	1.540	1.676

PLUGS

Schedule 40
PLUGS
Spig Plug

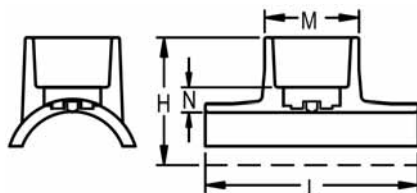


Nom. Pipe Size	White		Gray		CRITICAL DIMENSIONS				
	Univ. Part No.	IPEX Part No.	Univ. Part No.	IPEX Part No.	AF	D	L	T	Wt.(lbs)
3/8	449003	035946	-	-	0.795	0.675	0.970	0.190	0.011
1/2	449005	035631	449005G	035197	0.990	0.840	0.875	0.190	0.020
3/4	449007	035632	449007G	035198	1.175	1.050	1.125	0.220	0.031
1	449010	035633	449010G	035199	1.390	1.315	1.250	0.250	0.060
1-1/4	449012	035634	449012G	035200	1.845	1.660	1.530	0.280	0.090
1-1/2	448015	035635	448015G	035201	2.085	1.900	1.625	0.310	0.130
2	449020	035636	449020G	035202	2.795	2.375	1.750	0.380	0.194
2-1/2	449025	035637	-	-	3.130	2.875	2.375	0.380	0.340
3	449030	035638	449030G	035204	3.730	3.500	2.440	0.380	0.390
4	449040	035639	-	-	4.730	4.500	2.625	0.380	0.750

SCHEDULE 40 FITTINGS

SADDLES

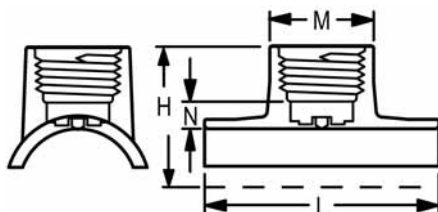
Schedule 40
SADDLES
Pipe O.D x Soc



Nom. Pipe Size	White		Gray		CRITICAL DIMENSIONS				
	Univ. Part No.	IPEX Part No.	Univ. Part No.	IPEX Part No.	N	H	M	L	Wt.(lbs)
2-1/2 x 3/4	463288	235048	-	-	0.065	2.565	1.345	5.315	0.220
3 x 1-1/4	463336	035996	-	-	0.655	3.655	2.375	6.315	0.591
3 x 1-1/2	463337	235049	-	-	0.315	3.315	2.375	6.375	0.556
3 x 2	463338	035995	-	-	1.875	5.000	2.750	6.315	0.731
4 x 1-1/4	463418	035767	-	-	0.690	4.190	2.375	6.250	0.600
4 x 1-1/2	463419	035768	-	-	0.250	3.750	2.405	6.250	0.575
4 x 2	463420	035769	-	-	0.815	5.500	2.750	6.250	0.769
5 x 1-1/2	463485	235050	-	-	1.155	5.375	2.780	7.125	1.102
5 x 2	463486	035955	-	-	0.280	5.000	2.750	7.125	0.899
6 x 1-1/4	463526	235051	-	-	0.750	5.375	2.375	6.315	0.800
6 x 1-1/2	463527	035588	-	-	0.315	4.940	2.405	6.315	0.713
6 x 2	463528	035942	-	-	1.875	6.565	2.750	6.315	0.919
6 x 4	463532	035770	-	-	0.250	5.500	5.000	11.940	1.925
8 x 1-1/4	463576	235052	-	-	1.000	3.655	2.375	6.345	0.860
8 x 1-1/2	463577	235053	-	-	0.595	6.220	2.375	6.315	0.772
8 x 2	463578	235054	-	-	2.000	7.690	3.750	6.315	0.992
8 x 4	463582	035976	-	-	0.250	6.500	5.030	11.875	2.238
10 x 4	463624	035771	-	-	0.315	7.625	5.000	11.875	2.200

SADDLES

Schedule 40
SADDLES
Pipe O.D x FPT



Nom. Pipe Size	White		Gray		CRITICAL DIMENSIONS				
	Univ. Part No.	IPEX Part No.	Univ. Part No.	IPEX Part No.	N	H	M	L	Wt.(lbs)
2-1/2 x 3/4	464288	235055	-	-	0.315	2.565	1.345	5.280	0.243
3 x 1-1/2	464337	035993	-	-	0.405	3.280	2.375	6.315	0.540
4 x 1-1/2	464419	035772	-	-	0.440	3.750	2.375	6.250	0.560
5 x 2	464486	035943	-	-	1.095	4.940	2.750	7.065	1.000
6 x 1-1/2	464527	035587	-	-	0.375	4.940	2.375	6.315	0.710
6 x 4	464532	235056	-	-	0.280	5.280	5.000	11.940	1.896
8 x 1-1/2	464577	235057	-	-	0.595	6.220	2.375	6.315	0.772
8 x 4	464582	035774	-	-	0.250	6.250	5.000	11.875	2.160
10 x 4	464624	235058	-	-	0.250	7.315	5.000	11.875	2.040

NOTES

SALES AND CUSTOMER SERVICE

Canadian Customers call

Toll free: (866) 473-9462

U.S. Customers call

Toll free: (800) 463-9572

www.ipexinc.com

About IPEX

IPEX is a leading supplier of thermoplastic piping systems. We provide our customers with one of the world's largest and most comprehensive product lines. All IPEX products are backed by over 50 years of experience. With state-of-the-art manufacturing facilities and distribution centers across North America, the IPEX name is synonymous with quality and performance.

Our products and systems have been designed for a broad range of customers and markets. Contact us for information on:

- PVC, CPVC, PP, ABS, PEX, FR-PVDF and PE pipe and fittings (1/4" to 48")
- Industrial process piping systems
- Double containment systems
- Acid waste systems
- High purity systems
- Industrial, plumbing and electrical cements
- Municipal pressure and gravity piping systems
- PE Electrofusion systems for gas and water
- Plumbing and mechanical pipe systems
- Electrical systems
- Telecommunication systems
- Irrigation systems
- Radiant heating systems

WARRANTY: All of the Company's Products are guaranteed against defects resulting from faulty workmanship or materials. The Company will replace, free of charge, including shipping charges for the replacement Products, any Products which are found to be defective in workmanship or material, provided that the following conditions are met:

- a) the Company is promptly notified in writing of such defect immediately upon discovery of same, and the defective Product is promptly returned to the Company;
- b) the defect is not due, without limitation, to faulty installation, misalignment of Products, vibration, ordinary wear and tear, corrosion, erosion, U.V. degradation, incompatible lubricants, pastes and thread sealants, unusual pressure surges or pulsation, water hammer, temperature shocking, or fouling; and
- c) the Products have not been altered or modified after leaving the Company's premises.

The warranty period can be specifically limited for certain Products as stated in writing in the Company's literature.

The Company will not allow claims for labor, materials and/or other expenses required to replace the defective Product, or to repair any damage resulting from the use thereof. The Company disclaims any responsibility for the Purchaser's calculations, product drawings or engineering design specifications. The Company's liability is limited to the purchase price applicable to the product.

It is agreed and understood that the Company's liability in respect to the sale is strictly limited to the replacement of Products as hereinbefore specified and that the Company shall not, in any event, be liable for any damages whether for the loss of use or business interruption or any other claim for incidental, consequential, special or punitive damages. There is no warranty, condition or representation of any nature whatsoever, expressed or implied, by statute or otherwise, except as herein contained, and the Company disclaims any implied warranties of merchantability and/or fitness of its Products for a special purpose.

This literature is published in good faith and is believed to be reliable. However, IPEX does not represent and/or warrant in any manner the information and suggestions contained in this brochure. Data presented is the result of laboratory tests and field experience.

IPEX maintains a policy of ongoing product improvement. This may result in modification of features and/or specifications without notice.



IPEX

MNINNAIP060803 © 2006 IPEX IND0038UC