

Dimensional Document

Viega PureFlow® Crimp



This document is subject to updates. For the most current Viega technical literature, please visit www.viega.us.

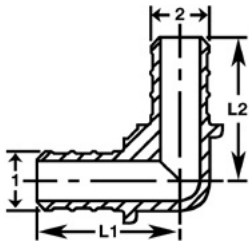


Viega products are designed to be installed by licensed and trained plumbing and mechanical professionals who are familiar with Viega products and their installation. **Installation by non-professionals may void Viega LLC's warranty.**



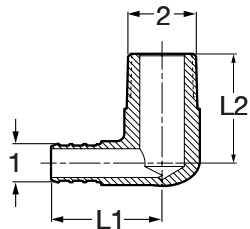
Zero Lead identifies Viega products meeting the lead free requirements of NSF/ANSI/CAN 61 through testing under NSF/ANSI/CAN 372 (0.25% or less maximum weighted average lead content).

Viega PureFlow Crimp 90° Elbow Zero Lead PolyAlloy – Model V5216

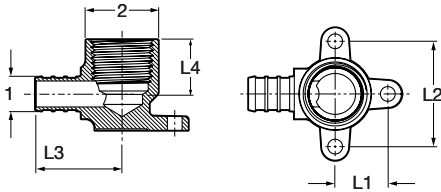


Part No.	Size (in) 1 2	L1 (in)		L2 (in)	
		Dec	Frac	Dec	Frac
43210	3/8 x 3/8	1.15	1/8	1.15	1/8
43220	1/2 x 1/2	1.15	1/8	1.15	1/8
43240	3/4 x 3/4	1.25	1/4	1.25	1/4
43242	3/4 x 1/2	1.25	1/4	1.25	1/4
43260	1 x 1	1.53	1/2	1.53	1/2

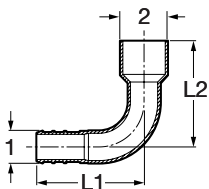
Viega PureFlow Crimp 90° Elbow Zero Lead Brass Crimp x MPT – Model V5014ZL



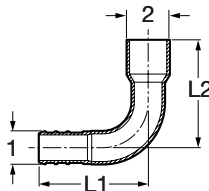
Part No.	Size (in) 1 2	L1 (in)		L2 (in)	
		Dec	Frac	Dec	Frac
46822	3/8 x 3/8 MPT	1.03	1/16	0.96	15/16
46232	1/2 x 3/8 MPT	1.29	15/16	0.96	15/16
46821	1/2 x 1/2 MPT	1.11	1/8	1.19	13/16
46245	3/4 x 3/4 MPT	1.50	1/2	1.26	11/4

Viega PureFlow Crimp 90° Elbow Drop Ear Zero Lead Brass Crimp x FPT – Model V5027ZL


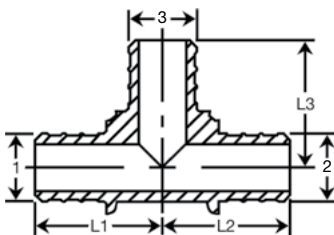
Part No.	Size (in)		L1 (in)		L2 (in)		L3 (in)		L4 (in)	
	1	2	Dec	Frac	Dec	Frac	Dec	Frac	Dec	Frac
46233	1/2	1/2 FPT	0.79	13/16	1.58	1 1/16	1.39	1 3/8	0.72	3/4
46244	3/4	3/4 FPT	0.99	1	1.98	2	1.46	1 7/16	1.05	1 1/16

Viega PureFlow Crimp 90° Elbow Zero Lead Copper Crimp x C – Model V5021


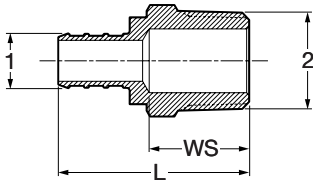
Part No.	Size (in)		L1 (in)		L2 (in)	
	1	2	Dec	Frac	Dec	Frac
44305	3/8	1/2 C	1.68	1 11/16	1.46	1 7/16
44325	1/2	1/2 C	1.43	1 7/16	1.58	1 9/16
44345	3/4	3/4 C	2.05	2 1/16	2.01	2

Viega PureFlow Crimp 90° Elbow Zero Lead Copper Crimp x FTG – Model V5020


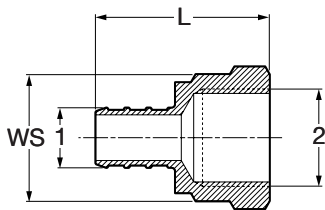
Part No.	Size (in)		L1 (in)		L2 (in)	
	1	2	Dec	Frac	Dec	Frac
44302	3/8	1/2 FTG	1.65	1 5/8	1.56	1 9/16
44320	1/2	1/2 FTG	1.44	1 7/16	1.49	1 1/2
44340	3/4	3/4 FTG	1.94	1 15/16	1.87	1 7/8

Viega PureFlow Crimp Tee Zero Lead PolyAlloy – Model V5218


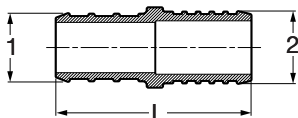
Part No.	Size (in)			L1 (in)		L2 (in)		L3 (in)	
	1	2	3	Dec	Frac	Dec	Frac	Dec	Frac
43500	3/8	3/8	3/8	1.16	1 3/16	1.16	1 3/16	1.16	1 3/16
43520	1/2	1/2	1/2	1.15	1 1/8	1.15	1 1/8	1.15	1 1/8
43334	1/2	1/2	3/4	1.25	1 1/4	1.25	1 1/4	1.15	1 1/8
43540	3/4	3/4	3/4	1.25	1 1/4	1.25	1 1/4	1.25	1 1/4
43433	3/4	1/2	1/2	1.25	1 1/4	1.15	1 1/8	1.25	1 1/4
43434	3/4	1/2	3/4	1.25	1 1/4	1.25	1 1/4	1.25	1 1/4
43443	3/4	3/4	1/2	1.15	1 1/8	1.15	1 1/8	1.25	1 1/4
43445	3/4	3/4	1	1.30	1 5/16	1.30	1 5/16	1.34	1 5/16
43544	1	3/4	3/4	1.37	1 3/8	1.36	1 3/8	1.36	1 3/8
43545	1	3/4	1	1.54	1 9/16	1.39	1 3/8	1.54	1 9/16
43553	1	1	1/2	1.33	1 5/16	1.33	1 5/16	1.32	1 5/16
43554	1	1	3/4	1.33	1 5/16	1.33	1 5/16	1.26	1 1/4
43560	1	1	1	1.53	1 1/2	1.53	1 1/2	1.53	1 1/2

Viega PureFlow Crimp Adapter Zero Lead Brass Crimp x MPT – Model V5011ZL


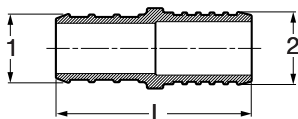
Part No.	Size (in)		L (in)		WS (in)	
	1	2	Dec	Frac	Dec	Frac
46302	3/8	1/2 MPT	1.63	15/8	0.88	7/8
46321	1/2	1/2 MPT	1.65	15/8	0.88	7/8
46324	1/2	3/4 MPT	1.84	1 ¹³ / ₁₆	1.06	1 ¹ / ₁₆
46342	3/4	1/2 MPT	1.68	1 ¹¹ / ₁₆	0.88	7/8
46340	3/4	3/4 MPT	1.84	1 ¹³ / ₁₆	1.06	1 ¹ / ₁₆
46446	3/4	1 MPT	2.07	2 ¹ / ₁₆	1.38	1 ³ / ₈
46361	1	3/4 MPT	2.02	2	1.06	1 ¹ / ₁₆
46366	1	1 MPT	2.25	2 ¹ / ₄	1.38	1 ³ / ₈

Viega PureFlow Crimp Adapter Zero Lead Brass Crimp x FPT – Model V5012ZL


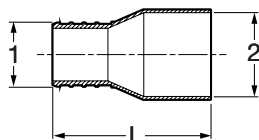
Part No.	Size (in)		L (in)		WS (in)	
	1	2	Dec	Frac	Dec	Frac
46323	3/8	1/2 FPT	1.62	15/8	1.00	1
46333	1/2	1/2 FPT	1.62	15/8	1.00	1
46334	1/2	3/4 FPT	1.67	1 ¹¹ / ₁₆	1.25	1 ¹ / ₄
46344	3/4	3/4 FPT	1.67	1 ¹¹ / ₁₆	1.25	1 ¹ / ₄
46345	3/4	1 FPT	1.89	1 ⁷ / ₈	1.50	1 ¹ / ₂
46355	1	1 FPT	2.07	2 ¹ / ₁₆	1.50	1 ¹ / ₂

Viega PureFlow Crimp Adapter Zero Lead Brass Crimp x PB – Model V5017ZL


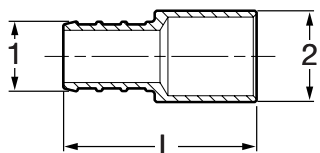
Part No.	Size (in)		L (in)	
	1	2	Dec	Frac
46620	3/8	3/8 PB	1.37	1 ³ / ₈
46630	1/2	1/2 PB	1.37	1 ³ / ₈
46145	3/4	3/4 PB	1.94	1 ¹⁵ / ₁₆
46156	1	1 PB	2.39	2 ³ / ₈

Viega PureFlow Crimp Adapter Zero Lead Crimp x PE – Model V5047ZL


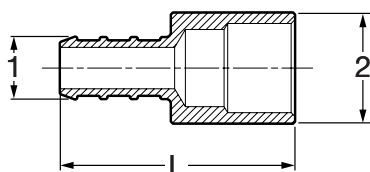
Part No.	Size (in)		L (in)	
	1	2	Dec	Frac
46145	3/4	3/4 C	1.94	1 ¹⁵ / ₁₆
46156	1	1 C	2.39	2 ³ / ₈

Viega PureFlow Crimp Adapter Zero Lead Brass Crimp x C – Model V5045ZL


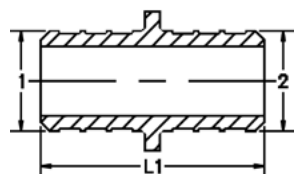
Part No.	Size (in)		L (in)	
	1	2	Dec	Frac
46635	1/2	1/2 C	1.33	1 ⁵ / ₁₆
46645	3/4	3/4 C	1.57	1 ⁹ / ₁₆
40655	1	1 C	2.13	2 ¹ / ₈

Viega PureFlow Crimp Adapter Zero Lead Brass Crimp x FTG – Model V5046ZL


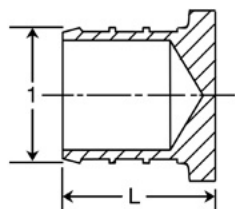
Part No.	Size (in)		L (in)	
	1	2	Dec	Frac
46633	1/2 x 1/2 FTG		1.33	1 ⁵ / ₁₆
46644	3/4 x 3/4 FTG		1.50	1 ¹ / ₂
60651	1 x 1 FTG		1.97	2

Viega PureFlow Crimp Adapter Zero Lead Brass Crimp x FTG x C – Model V5024ZL


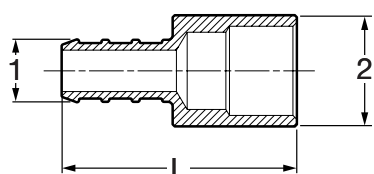
Part No.	Size (in)		L (in)	
	1	2	Dec	Frac
46621	3/8 x 3/8 FTG or 1/4 C		1.33	1 ⁵ / ₁₆
46622	3/8 x 1/2 FTG or 3/8 C		1.33	1 ⁵ / ₁₆
46631	1/2 x 3/8 FTG or 1/4 C		1.46	1 ⁷ / ₁₆
46654	1 x 1 FTG or 3/4 C		1.92	1 ¹⁵ / ₁₆

Viega PureFlow Crimp Zero Lead Coupling PolyAlloy – Model V5215


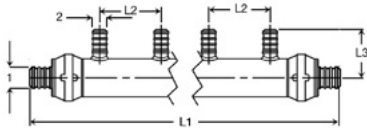
Part No.	Size (in)		L (in)	
	1	2	Dec	Frac
43402	3/8 x 3/8		1.52	1 ¹ / ₂
43403	1/2 x 1/2		1.50	1 ¹ / ₂
43332	1/2 x 3/8		1.52	1 ¹ / ₂
43343	3/4 x 1/2		1.50	1 ¹ / ₂
43353	1 x 1/2		1.70	1 ¹¹ / ₁₆
43404	3/4 x 3/4		1.50	1 ¹ / ₂
43354	1 x 3/4		1.70	1 ¹¹ / ₁₆
43355	1 x 1		1.82	1 ¹³ / ₁₆

Viega PureFlow Crimp Test Plug Zero Lead PolyAlloy – Model V5058


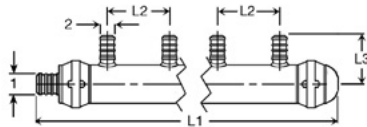
Part No.	Size (in)		L (in)	
	1		Dec	Frac
43702	3/8		0.76	3/4
43723	1/2		0.76	3/4
43744	3/4		0.95	1 ¹⁵ / ₁₆
43765	1		1.13	1 ¹ / ₈

Viega PureFlow Crimp Transition Coupling Zero Lead – Model 5013PZL


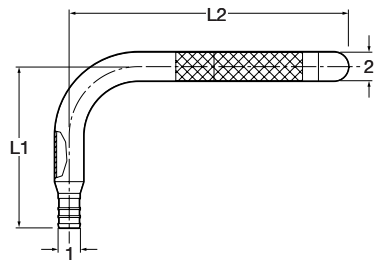
Part No.	Size (in)		L1 (in)	
	1	2	Dec	Frac
44350	1/2 C 1/2 P		1.60	1 ⁵ / ₈
44355	1/2 C x 3/4 P		1.81	1 ¹³ / ₁₆
44360	3/4 C x 1/2 P		1.65	1 ⁵ / ₈
44365	3/4 C x 3/4 P		1.72	1 ³ / ₄
44370	1 C x 1 P		1.93	1 ¹⁵ / ₁₆

Viega PureFlow Crimp Manifold Zero Lead PolyAlloy Flow Through – Model V5031.2


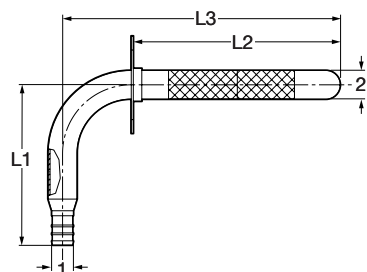
Part No.	Size (in)		Outlets	L1 (in)		L2 (in)		L3 (in)	
	1	2		Dec	Frac	Dec	Frac	Dec	Frac
65152	3/4	x 1/2	2	6.50	6 1/2	2.00	2	1.55	1 5/16
65153	3/4	x 1/2	3	8.50	8 1/2	2.00	2	1.55	1 5/16
65154	3/4	x 1/2	4	10.50	10 1/2	2.00	2	1.55	1 5/16
65254	1 x 3/4	x 1/2	4	10.60	10 5/8	2.00	2	1.55	1 5/16
65256	1	x 1/2	6	14.80	14 13/16	2.00	2	1.55	1 5/16
65258	1	x 1/2	8	18.80	18 13/16	2.00	2	1.55	1 5/16

Viega PureFlow Crimp Manifold Zero Lead PolyAlloy Closed – Model V5031.22


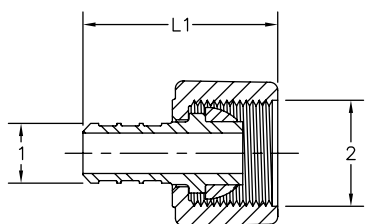
Part No.	Size (in)		Outlets	L1 (in)		L2 (in)		L3 (in)	
	1	2		Dec	Frac	Dec	Frac	Dec	Frac
65104	3/4	x 1/2	4	10.10	10 1/8	2.00	2	1.55	1 5/16
65206	1	x 1/2	6	14.30	14 5/16	2.00	2	1.55	1 5/16

Viega PureFlow Crimp Stub-Out 90° Elbow Zero Lead Copper Crimp x Street – Model V5070


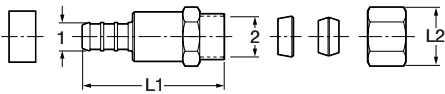
Part No.	Size (in)		L1 (in)		L2 (in)	
	1	2	Dec	Frac	Dec	Frac
44208	3/8	x 1/2 FTG	3.50	3 1/2	7.75	7 3/4
44226	1/2	x 1/2 FTG	3.50	3 1/2	5.75	5 3/4
44228	1/2	x 1/2 FTG	3.50	3 1/2	7.75	6 3/4
44240	3/4	x 3/4 FTG	4.50	4 1/2	8.00	8

Viega PureFlow Crimp Stub-Out 90° Elbow Zero Lead Copper Crimp x Street with Wall Plate – Model V5070.1


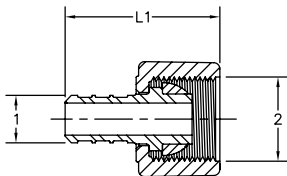
Part No.	Size (in)		L1 (in)		L2 (in)		L3 (in)	
	1	2	Dec	Frac	Dec	Frac	Dec	Frac
44209	3/8	x 1/2 FTG	3.50	3 1/2	7.75	7 3/4	6.00	6
44227	1/2	x 1/2 FTG	3.50	3 1/2	5.75	5 3/4	4.00	4
44229	1/2	x 1/2 FTG	3.50	3 1/2	7.75	7 3/4	6.00	6

Viega PureFlow Crimp Lav Adapter Zero Lead Brass Crimp x Lav – Model V5075ZL


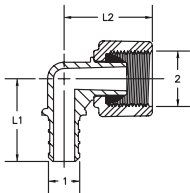
Part No.	Size (in)		L (in)	
	1	2	Dec	Frac
46023	3/8	x 1/2 Lav (plastic nut)	1.65	1 5/8
46033	1/2	x 1/2 Lav (plastic nut)	1.65	1 5/8

Viega PureFlow Crimp Lav Adapter Zero Lead Brass Crimp x CTS – Model V5077ZL


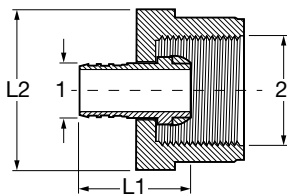
Part No.	Size (in) 1 2	L1 (in)		L2 (in)	
		Dec	Frac	Dec	Frac
46032	3/8 x 1/4 CTS (3/8 OD) Comp	1.76	1 3/4	0.63	5/8
46331	1/2 x 1/4 CTS (3/8 OD) Comp	1.76	1 3/4	0.63	5/8

Viega PureFlow Crimp Lav Adapter Zero Lead PolyAlloy Crimp x Lav - Model V5263


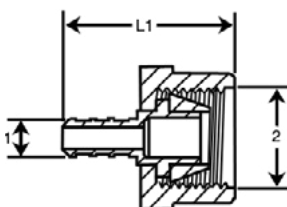
Part No.	Size (in) 1 2	L1 (in)	
		Dec	Frac
43323	3/8 x 1/2 Lav	1.52	1 1/2
43333	1/2 x 1/2 Lav	1.46	1 7/16
43344	3/4 x 3/4 Lav	1.62	1 5/8

Viega PureFlow Crimp Lav Adapter 90° Elbow Zero Lead PolyAlloy Crimp x Lav - Model V5255


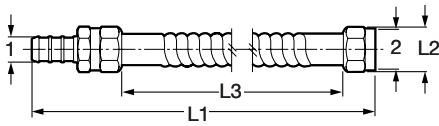
Part No.	Size (in) 1 2	L1 (in)		L2 (in)	
		Dec	Frac	Dec	Frac
43232	3/8 x 1/2 Lav	1.35	1 3/8	1.15	1 1/8
43233	1/2 x 1/2 Lav	1.35	1 3/8	1.15	1 1/8
43244	3/4 x 3/4 Lav	1.42	1 7/16	1.25	1 1/4

Viega PureFlow Crimp Closet Adapter Zero Lead Brass Crimp x Closet – Model V5072ZL


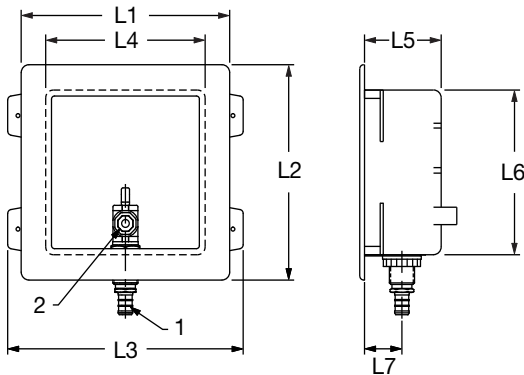
Part No.	Size (in) 1 2	L1 (in)		L2 (in)	
		Dec	Frac	Dec	Frac
46223	3/8 x 1/2 Closet (plastic nut)	1.36	1 3/8	1.16	1 3/16
46234	1/2 x 1/2 Closet (plastic nut)	1.36	1 3/8	1.16	1 3/16

Viega PureFlow Crimp Closet Adapter Zero Lead PolyAlloy Crimp x Closet – Model V5257


Part No.	Size (in) 1 2	L1 (in)	
		Dec	Frac
43300	3/8 x 1/2 Closet	1.60	1 5/8
43320	1/2 x 1/2 Closet	1.60	1 5/8

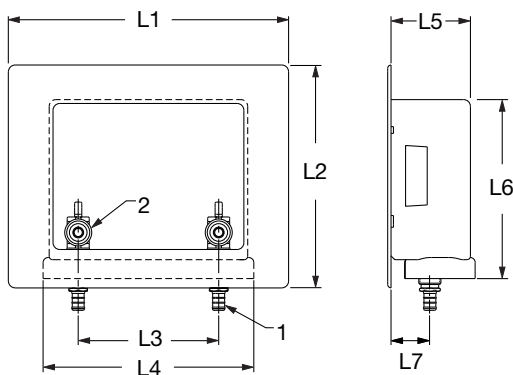
Viega PureFlow Crimp Swivel Connector Zero Lead Copper For Water Heater Crimp x FPT – Model V5048ZL


Part No.	Size (in)		L1 (in)		L2 (in)		L3 (in)	
	1	2	Dec	Frac	Dec	Frac	Dec	Frac
46764	¾ x ¾ FPT		19.00	19	1.13	1 1/8	18.00	18

Viega PureFlow Crimp Outlet Box Zero Lead Brass For Ice Maker ¼ Turn – Models 2872.8ZL and V5073


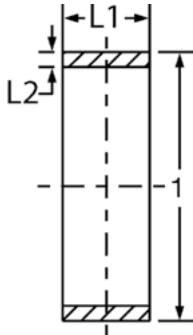
Part No.	Size (in)		L1 (in)		L2 (in)		L3 (in)		L4 (in)		L5 (in)		L6 (in)		L7 (in)	
	1	2	Dec	Frac	Dec	Frac	Dec	Frac	Dec	Frac	Dec	Frac	Dec	Frac	Dec	Frac
46710*	¾ x 1/8 CTS (¼ O.D.)		6.80	6 13/16	6.80	6 13/16	7.68	7 11/16	5.20	5 3/16	2.50	2 1/2	5.20	5 3/16	1.22	1 1/4
46720*	½ x 1/8 CTS (¼ O.D.)		6.80	6 13/16	6.80	6 13/16	7.68	7 11/16	5.20	5 3/16	2.50	2 1/2	5.20	5 3/16	1.22	1 1/4
43700	¾ x 1/8 CTS (¼ O.D.)		6.80	6 13/16	6.80	6 13/16	7.68	7 11/16	5.20	5 3/16	2.50	2 1/2	5.20	5 3/16	1.22	1 1/4
43722	½ x 1/8 CTS (¼ O.D.)		6.80	6 13/16	6.80	6 13/16	7.68	7 11/16	5.20	5 3/16	2.50	2 1/2	5.20	5 3/16	1.22	1 1/4

* with hammer arrestor

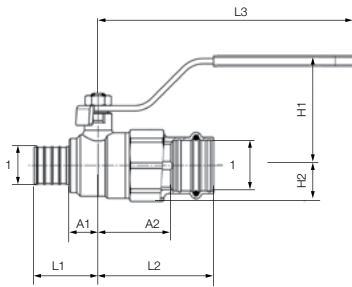
Viega PureFlow Crimp Outlet Box Zero Lead Brass For Washing Machine ¼ Turn – Models 2872.9ZL and V5073.5


Part No.	Size (in)		L1 (in)		L2 (in)		L3 (in)		L4 (in)		L5 (in)		L6 (in)		L7 (in)	
	1	2	Dec	Frac	Dec	Frac	Dec	Frac	Dec	Frac	Dec	Frac	Dec	Frac	Dec	Frac
46730*	½ x ¾ Hose		10.40	10 3/8	8.30	8 5/16	5.20	5 3/16	7.40	7 3/8	2.90	2 7/8	6.60	6 5/8	1.43	1 7/16
43720	½ x ¾ Hose		10.40	10 3/8	8.30	8 5/16	5.20	5 3/16	7.40	7 3/8	2.90	2 7/8	6.60	6 5/8	1.43	1 7/16

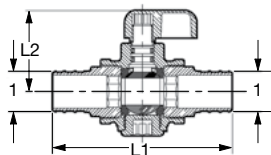
* with hammer arrestor

Viega PureFlow Crimp Ring Copper – Model V5019.9


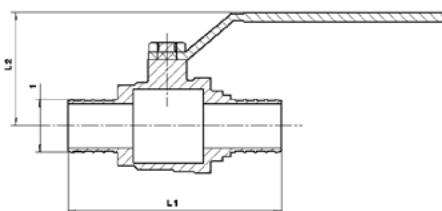
Part No.	Size (in) 1	L1 (in)		L2 (in)	
		Dec	Frac	Dec	Frac
43600	3/8 SDR9	0.32	5/16	0.05	1/16
43620	1/2 SDR9	0.32	5/16	0.05	1/16
43640	3/4 SDR9	0.32	5/16	0.05	1/16
43660	1 SDR9	0.36	3/8	0.04	1/16

Viega PureFlow PureFlow Crimp x ProPress Ball Valve – Model 2882.2ZL


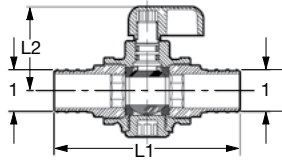
Part No.	Size (in) 1	H1 (in)		H2 (in)		L1 (in)		L2 (in)		L3 (in)		A1 (in)		A2 (in)		Cv (US gal/min)
		Dec	Frac	Dec	Frac	Dec	Frac	Dec	Frac	Dec	Frac	Dec	Frac	Dec	Frac	
87890	1/2	1.93	1 ¹⁵ / ₁₆	0.55	9/16	1.06	1 ¹ / ₁₆	2.01	2	4.61	4 ⁵ / ₈	0.43	1/16	1.18	1 ³ / ₁₆	6.05
87885	3/4	1.97	2	0.67	1 ¹ / ₁₆	1.14	1 ¹ / ₈	2.28	2 ¹ / ₄	4.61	4 ⁵ / ₈	0.51	1/2	1.38	1 ³ / ₈	13.5
87895	1	2.48	2 1/2	0.83	1 ³ / ₁₆	1.46	1 ⁷ / ₁₆	2.60	2 ⁵ / ₈	5.79	5 ¹³ / ₁₆	0.67	1 ¹ / ₁₆	1.69	1 ¹¹ / ₁₆	22.3

Viega PureFlow Crimp Ball Valve Zero Lead Brass 1/4 Turn – Model V5037ZL


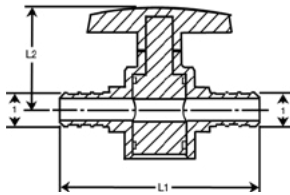
Part No.	Size (in) 1 1	L1 (in)		L2 (in)	
		Dec	Frac	Dec	Frac
46031	1/2 x 1/2	2.76	2 ³ / ₄	1.21	1 ³ / ₁₆
46044	3/4 x 3/4	2.95	2 ¹⁵ / ₁₆	1.31	1 ⁵ / ₁₆

Viega PureFlow Crimp Ball Valve Zero Lead Brass 1-inch Turn – Model V5037ZL


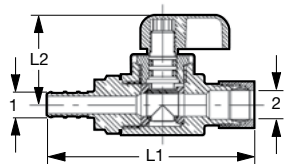
Part No.	Size (in) 1 1	L1 (in)		L2 (in)	
		Dec	Frac	Dec	Frac
46060	1 x 1	3.41	3 ⁷ / ₁₆	1.84	1 ¹³ / ₁₆

Viega PureFlow Crimp Ball Valve Zero Lead Chrome Plated Brass ¼ Turn – Model V5023ZL


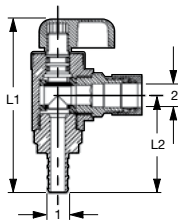
Part No.	Size (in)	L1 (in)		L2 (in)	
		Dec	Frac	Dec	Frac
46021	½	2.76	2¾	1.20	1⅜

Viega PureFlow Crimp Valve Zero Lead PolyAlloy ¼ Turn – Model V5236


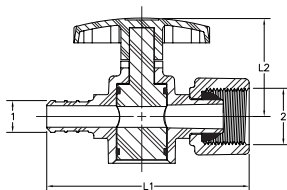
Part No.	Size (in)	L1 (in)		L2 (in)	
		Dec	Frac	Dec	Frac
43030	½	2.83	2 ¹³ / ₁₆	1.45	1 ⁷ / ₁₆
43040	¾	3.00	3	1.45	1 ⁷ / ₁₆

Viega PureFlow Crimp Stop Valve Straight Zero Lead Chrome Plated Brass Crimp x CTS ¼ Turn – Model V5026ZL


Part No.	Size (in)	L1 (in)		L2 (in)	
		1	2	Dec	Frac
46001	¾ x ¼ CTS (¾ OD) Comp	2.78	2¾	1.20	1⅜
46022	½ x ¼ CTS (¾ OD) Comp	2.78	2¾	1.20	1⅜

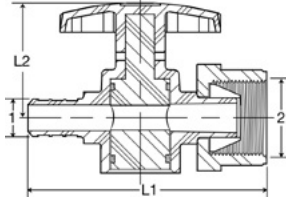
Viega PureFlow Crimp Stop Valve Angled Zero Lead Chrome Plated Brass Crimp x CTS ¼ Turn – Model V5064ZL


Part No.	Size (in)	L1 (in)		L2 (in)	
		1	2	Dec	Frac
46002	¾ x ¼ CTS (¾ OD) Comp	2.70	2 ¹¹ / ₁₆	1.03	1
46025	½ x ¼ CTS (¾ OD) Comp	2.80	2 ¹³ / ₁₆	1.03	1

Viega PureFlow Crimp Stop Valve Straight Zero Lead PolyAlloy Crimp x Lav ¼ Turn – Model V5036.30


Part No.	Size (in)	L1 (in)		L2 (in)	
		1	2	Dec	Frac
43023	¾ x ½ Lav	3.00	3	1.45	1 ⁷ / ₁₆

Viega PureFlow Crimp Stop Valve Straight Zero Lead PolyAlloy Crimp x Closet ¼ Turn – Model V5036.31



Part No.	Size (in) 1 2	L1 (in)		L2 (in)	
		Dec	Frac	Dec	Frac
43002	3/8 x 1/2 Closet	3.00	3	1.45	17/16
43003	1/2 x 1/2 Closet	3.00	3	1.45	17/16

V Viega LLC
585 Interlocken Blvd.
Broomfield, CO 80021

Phone (800) 976-9819
www.viega.us

DD-PF 0325 PureFlow Crimp

