

Series 772 Non-Rising Stem Resilient Wedge Gate Valve Handwheel/Square Nut Replacement and Mounting Flange Installation

IMPORTANT INFORMATION

! WARNING



- Read and understand all instructions before attempting to install, remove, or adjust any Victaulic piping products.
 - Wear safety glasses, hardhat, and foot protection.
- Failure to follow these instructions could cause product failure, resulting in serious personal injury and/or property damage.

! WARNING

- Depressurize and drain the piping system before performing any conversions.
- Failure to follow this instruction could cause product failure, resulting in serious personal injury and/or property damage.

REMOVAL OF SQUARE OPERATING NUT

NOTICE

- To replace a handwheel with a square nut, reverse the following process.

This conversion can be done while the valve is installed in the piping system. **Make sure the system is depressurized and drained completely.**



1. Fully open the valve by turning the square operating nut counterclockwise until you feel a sharp resistance.

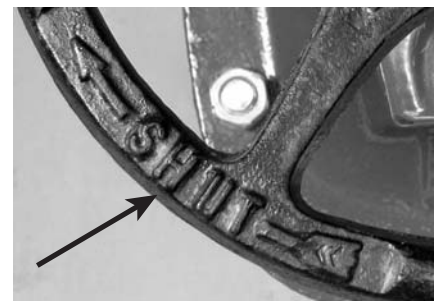


2. Loosen and remove the operator retaining nut from the end of the valve shaft.



3. Remove the existing square operating nut from the valve.

INSTALLATION OF HANDWHEEL



1. Install the handwheel onto the valve. Make sure "OPEN" and "SHUT" markings are facing up.

VICTAULIC® IS AN ISO 9001 CERTIFIED COMPANY

UNITED STATES

Phone: 1-800-PICK-VIC
(1-800-742-5842)
Fax: 610-250-8817
e-mail: pickvic@victaulic.com

CANADA

Phone: 905-884-7444
Fax: 905-884-9774
e-mail: viccanada@victaulic.com

EUROPE

Phone: 32-9-381-1500
Fax: 32-9-380-4438
e-mail: viceuro@victaulic.be

UK

Phone: 44(0)1438741100
Fax: 44(0)1438313883
e-mail: viceuro@victaulic.be

CENTRAL & SOUTH AMERICA

Phone: 610-559-3300
Fax: 610-559-3608
e-mail: vical@victaulic.com

AUSTRALASIA

Phone: 86-21-58855151
Fax: 86-21-58851298
e-mail: vicap@victaulic.com



2 Reinstall and tighten the operator retaining nut. To prevent the valve shaft from turning, restrain the handwheel.

3 To verify proper installation of the handwheel, cycle the valve fully opened and fully closed.

INSTALLATION OF MOUNTING FLANGE FOR UPRIGHT INDICATOR POST

1 Follow Steps 1 through 3 under Removal of Square Operating Nut.

NOTICE

- If the valve is initially equipped with a handwheel, the handwheel must be replaced with a square operating nut in order for an upright indicator to be installed on the valve.



2 Loosen and remove the two stem seal flange mounting bolts from the valve.



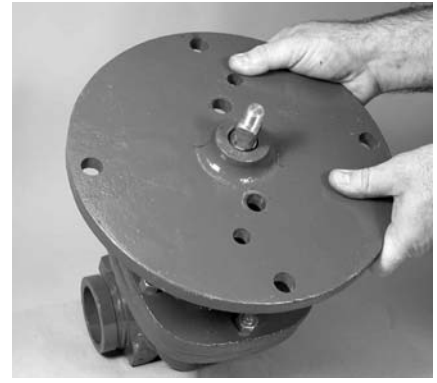
3 Remove the stem seal flange from the valve by lifting straight up off the end of the valve shaft.



4 Inspect all seals on the valve and valve mounting flange. Replace damaged seals. Lubricate the seals using silicone or Victaulic lubricant.

CAUTION

- Do not cut the seals on the valve shaft during installation. Failure to follow this instruction could result in valve leakage.



5 Install the mounting flange onto the valve.



6 Reinstall and tighten the two mounting bolts.



7 Reinstall the square operating nut onto the valve shaft. Reinstall and tighten the operator retaining nut onto the valve shaft to secure the square operating nut.