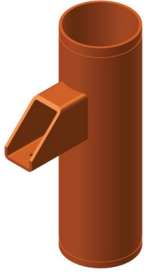


Victaulic® Carbon Steel Riser Anchor for Tight Spaces

No. A40



2 – 12"/DN50 – DN300

1.0 PRODUCT DESCRIPTION

Available Sizes

- 2 – 12"/DN50 – DN300

Maximum Working Pressure

- Accommodates pressures ranging from full vacuum (29.9 in Hg) up to 500 psi/3447 kPa/34 bar

Application

- For use on carbon steel NPS riser piping¹
- An engineered pipe anchor used to assist in directing pipe movement in piping system risers that are designed and installed exclusively with Victaulic grooved products
- Exclusively for use with pipe and Victaulic products which feature the Victaulic Original Groove System (OGS) groove profile (see section 7.0 for Reference Materials)
- Exclusively for use only in piping systems where a radial pipe guide is present above and below the No. A40 anchor. The guides shall be 4 pipe diameters (4D) (minimum) to 12'-0" (maximum) away from the No. A40 anchor. For piping systems without guides, refer to [publication 07.70](#): Victaulic Carbon Steel Riser Anchor: No A10.

¹ Only for use in carbon steel piping systems. For stainless steel applications, refer to [publication 17.74](#): Victaulic Stainless Steel Riser Anchor for Tight Spaces: No. A40S.

2.0 CERTIFICATION/LISTINGS

Product designed and manufactured under Victaulic's Quality Management System, as certified by LPCB in accordance with ISO 9001:2018.

ALWAYS REFER TO ANY NOTIFICATIONS AT THE END OF THIS DOCUMENT REGARDING PRODUCT INSTALLATION, MAINTENANCE OR SUPPORT.

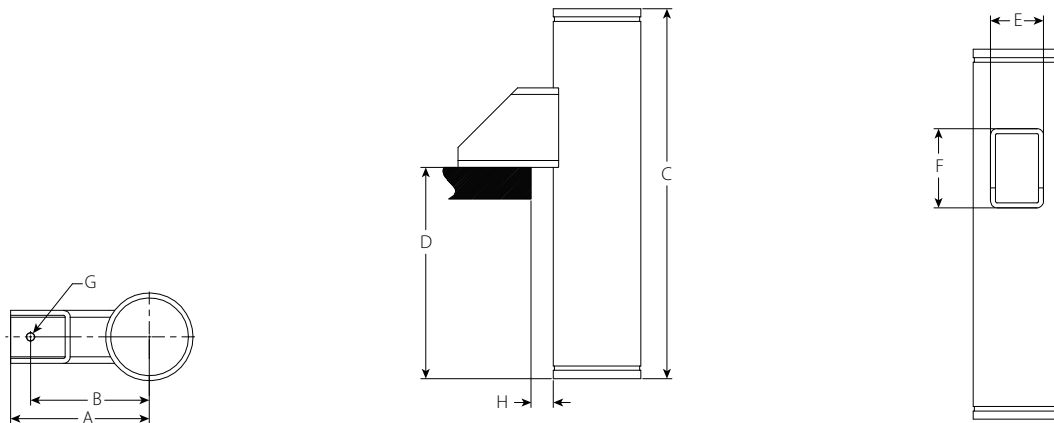


3.0 SPECIFICATIONS – MATERIAL

- Standard weight carbon steel pipe conforming to ASTM A53 Grade B Type E.
- Brackets:
 - 2 – 3"/DN50 – DN80: Carbon steel conforming to ASTM A36
 - 4 – 12"/DN100 – DN300: Carbon steel conforming to ASTM A500 Grade D
- Standard coating: Orange enamel
- Fastening selection/method by others²

² Material, type, length, and capacity shall be the responsibility of others.

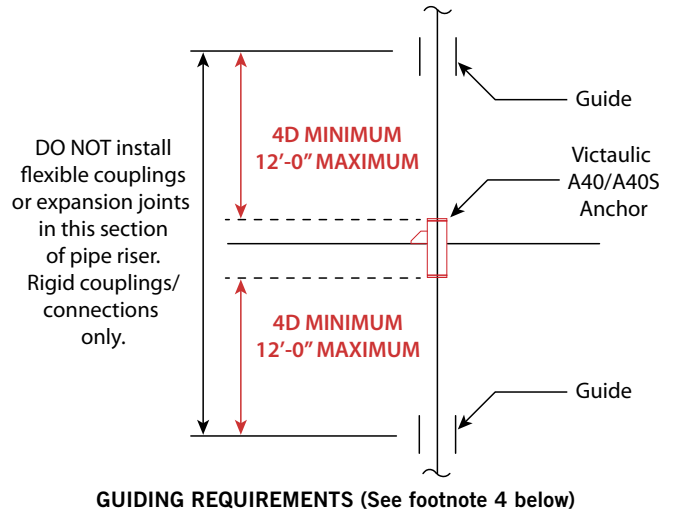
4.0 DIMENSIONS



Size		Dimensions								Weight
Nominal	Actual Outside Diameter	A	B	C	D	E	F	G Bolt Hole Diameter	H Maximum Clearance To Edge of Support	Approx. (Each)
inches DN	inches mm	inches mm	inches mm	inches mm	inches mm	inches mm	inches mm	inches mm	inches mm	lbs kg
2	2.375	7.00	6.00	24.00	16.00	2.00	3.00	0.625	2.00	10.1
DN50	60.3	178	153	610	406	51	76	15.9	51	4.6
2 ½	2.875	7.00	6.00	24.00	16.00	2.00	3.00	0.625	2.00	14.3
	73.0	178	153	610	406	51	76	15.9	51	6.5
3	3.500	8.00	7.00	24.00	16.00	2.00	3.00	0.625	2.00	18.2
DN80	88.9	203	178	610	406	51	76	15.9	51	8.3
4	4.500	8.00	7.00	24.00	16.00	2.00	4.00	0.625	2.00	25.1
DN100	114.3	203	178	610	406	51	102	15.9	51	11.4
5	5.563	9.00	8.00	24.00	16.00	2.00	4.00	0.625	2.00	33.1
	141.3	229	203	610	406	51	102	15.9	51	15.0
6	6.625	10.50	9.00	28.00	16.00	4.00	6.00	0.875	2.00	55.3
DN150	168.3	267	229	711	406	102	152	22.2	51	25.1
8	8.625	11.50	10.00	28.00	16.00	4.00	6.00	0.875	2.00	77.5
DN200	219.1	292	254	711	406	102	152	22.2	51	35.2
10	10.750	13.50	12.00	30.00	16.00	4.00	6.00	0.875	2.00	117.4
DN250	273.0	343	305	762	406	102	152	22.2	51	53.3
12	12.750	15.50	14.00	30.00	16.00	4.00	6.00	0.875	2.00	142.7
DN300	323.9	394	356	762	406	102	152	22.2	51	64.7







5.0 PERFORMANCE

Size		Maximum Working Pressure	Maximum Anchor Load ³⁻⁹
Nominal	Actual Outside Diameter		
inches DN	inches mm	psi kPa	lbs N
2	2.375	500	1750
DN50	60.3	3445	7784
2 ½	2.875	500	2500
	73.0	3445	11121
3	3.500	500	3250
DN80	88.9	3445	14457
4	4.500	500	5000
DN100	114.3	3445	22241
5	5.563	500	7500
	141.3	3445	33362
6	6.625	500	10000
DN150	168.3	3445	44482
8	8.625	500	15000
DN200	219.1	3445	66723
10	10.750	500	17500
DN250	273.0	3445	77844
12	12.750	500	20000
DN300	323.9	3445	88694



- ³ Engineer of Record and/or structural engineer are responsible to verify that the attachment method and supporting structure are structurally adequate to withstand the above noted Maximum Anchor Loads. For bolted applications, all reaction forces on the bolts shall be accounted for, including, but not limited to, tensile loads that result from downward loading as a result of bracket reacting with the structure, and tensile loads resulting from upward loading.
- ⁴ Two (2) guides are required for each No. A40 anchor installed as a minimum - one (1) above and one (1) below. The pipe must be guided within a range of minimum 4 pipe diameters (4D) and a maximum of 12'-0" away from the No. A40 anchor.
- ⁵ Anchor is only designed for downward loads.
- ⁶ Anchor is only designed for loading in the axial directions of the pipe, vertically downwards. Any lateral loading must be negated by the owner/engineer by the use of guides or other methods to ensure only vertical, axial loading is transmitted to the anchor.
- ⁷ For applications with maximum anchor loads greater than listed above, please contact Victaulic.
- ⁸ Acceptable methods of attachment include bolting or welding of the brackets to the structure. Chosen method is the responsibility of others.
- ⁹ Maximum Anchor Load shall be the lesser of the value shown and the published Maximum End Load for the coupling selected to join the Anchor to the adjoining piping system.

6.0 NOTIFICATIONS

⚠ WARNING					
					
<ul style="list-style-type: none">• Read and understand all instructions before attempting to install, remove, adjust, or maintain any Victaulic piping products• Depressurize and drain the piping system before attempting to install, remove, adjust, or maintain any Victaulic piping products• Wear safety glasses, hardhat, and foot protection <p>Failure to follow these instructions could result in death or serious personal injury and property damage.</p>					

7.0 REFERENCE MATERIALS

[06.02: Victaulic Zero-Flex Rigid Coupling: Style 07](#)

[06.04: Victaulic Standard Flexible Coupling: Style 77](#)

[06.23: Victaulic QuickVic™ Rigid Coupling: Style 107N](#)

[06.24: Victaulic QuickVic™ Flexible Coupling: Style 177N](#)

[I-100: Victaulic Field Installation Handbook](#)

[I-107N: Victaulic Installation Instructions: Style 107N QuickVic™ Installation-Ready™ Rigid Coupling](#)

[I-177N: Victaulic Installation Instructions: Style 177N QuickVic™ Installation-Ready™ Flexible Coupling](#)

[I-A40/A40S: Victaulic Installation Instructions: Nos. A40 and A40S Tight-Space Riser Anchors](#)

User Responsibility for Product Selection and Suitability

Each user bears final responsibility for making a determination as to the suitability of Victaulic products for a particular end-use application, in accordance with industry standards and project specifications, as well as Victaulic performance, maintenance, safety, and warning instructions. Nothing in this or any other document, nor any verbal recommendation, advice, or opinion from any Victaulic employee, shall be deemed to alter, vary, supersede, or waive any provision of Victaulic Company's standard conditions of sale, installation guide, or this disclaimer.

Intellectual Property Rights

No statement contained herein concerning a possible or suggested use of any material, product, service, or design is intended, or should be construed, to grant any license under any patent or other intellectual property right of Victaulic or any of its subsidiaries or affiliates covering such use or design, or as a recommendation for the use of such material, product, service, or design in the infringement of any patent or other intellectual property right. The terms "Patented" or "Patent Pending" refer to design or utility patents or patent applications for articles and/or methods of use in the United States and/or other countries.

Note

This product shall be manufactured by Victaulic or to Victaulic specifications. All products to be installed in accordance with current Victaulic installation/assembly instructions. Victaulic reserves the right to change product specifications, designs and standard equipment without notice and without incurring obligations.

Installation

Reference should always be made to the Victaulic installation handbook or installation instructions of the product you are installing. Handbooks are included with each shipment of Victaulic products, providing complete installation and assembly data, and are available in PDF format on our website at www.victaulic.com.

Warranty

Refer to the Warranty section of the current Price List or contact Victaulic for details.

Trademarks

Victaulic and all other Victaulic marks are the trademarks or registered trademarks of Victaulic Company, and/or its affiliated entities, in the U.S. and/or other countries.