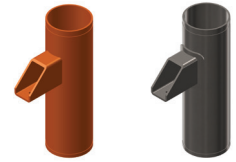


Nos. A40 and A40S Tight-Space Riser Anchors



WARNING

- Read and understand all instructions before attempting to install any Victaulic piping products.
- Always depressurize and drain the piping system before attempting to install, remove, adjust, or maintain any Victaulic piping products.
- Wear safety glasses, hardhat, and foot protection.

Failure to follow these instructions could result in death or serious personal injury and property damage.

IMPORTANT INFORMATION

No. A40 and No. A40S Tight-Space Riser Anchors may be specified to assist in directing pipe movement in piping system risers that are designed and installed exclusively with Victaulic grooved OGS products.

Original Groove System (OGS) Groove Profile



No. A40 and No. A40S Tight-Space Riser Anchors should be specified **ONLY** for use with mating components that are prepared to Victaulic OGS specifications. Refer to Victaulic publication 25.01 for the OGS groove specifications, which can be downloaded at victaulic.com.

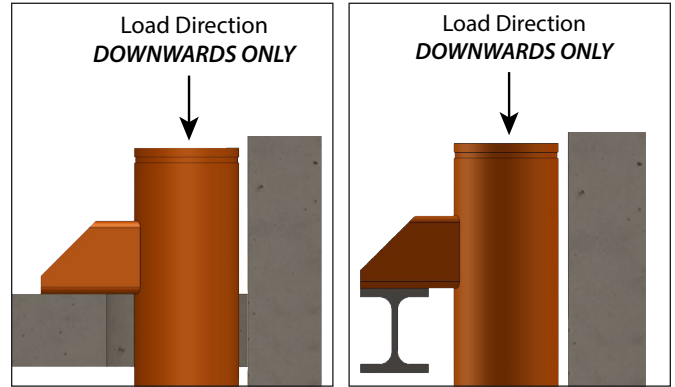
WARNING

- **ALWAYS VERIFY THAT MATING COMPONENTS WITH THE CORRECT GROOVE PROFILE (OGS) ARE BEING USED WITH THE ANCHOR.**
- **ALWAYS VERIFY THAT SUPPORTING STRUCTURES ARE CAPABLE OF ACCOMMODATING THE LOADS TRANSFERRED ACROSS THIS PRODUCT.**

Failure to follow these instructions could result in death or serious personal injury and property damage.

Before installing No. A40 and No. A40S Tight-Space Riser Anchors, you must verify that the supporting structure and attachment method to be used have been reviewed and approved by a structural engineer and/or the engineer of record. Follow all instructions provided by the manufacturer of the supporting structure and the manufacturer of the mounting hardware.

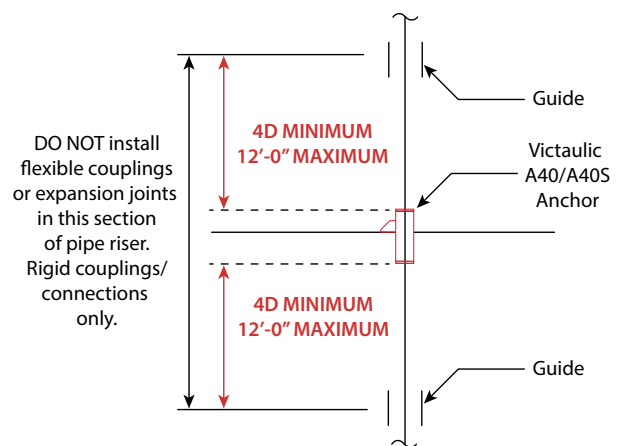
INSTALLATION



Anchor arms shall be level and shall sit flush with the surface of the floor or structure.

- Install bolts/hardware or weld. Install anchor using the attachment method and procedure approved by the structural engineer and/or the engineer of record.
- If using bolts/hardware, install as per hardware manufacturer's instructions.
- Ensure that anchor is installed level and plumb. Pipe misalignment shall be corrected through pipe adjustment, rather than manipulation of the anchor. Do not strike, push, or distort the anchor in any way.
- The system designer should review the submittal to ensure compatibility between the A40/A40S anchor and the supporting structure. Notify the system designer and/or the engineer of record if the as-installed conditions do not match the submittal, specifications, or design.

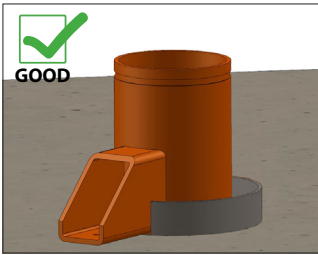
PIPE GUIDING REQUIREMENTS



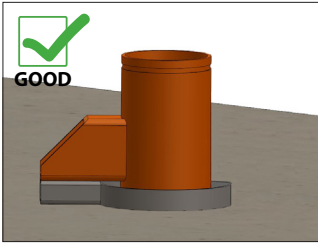
- Two (2) guides are required for each A40/A40S anchor installed as a minimum — 1 above, and 1 below. The pipe must be guided within a range of minimum 4 diameters (4D) and up to a maximum of 12'-0" away from the A40/A40S anchor.
- DO NOT install flexible couplings or expansion joints between the first guides above and below the A40/A40S anchor.

Nos. A40 and A40S Tight-Space Riser Anchors

PIPE SLEEVES



- No. A40 and No. A40S Tight-Space Riser Anchors shall be installed flush with the floor so that force is distributed evenly. In designs where a pipe sleeve extends above the plane of the floor, the pipe sleeve can be notched to accommodate the anchor arm.



- Alternatively, a metal spacer with a hole drilled in it to accommodate the mounting bolt can be used beneath the anchor arm so that the force is not distributed to the pipe sleeve.
- If used, these methods shall be approved by the engineer of record.

