

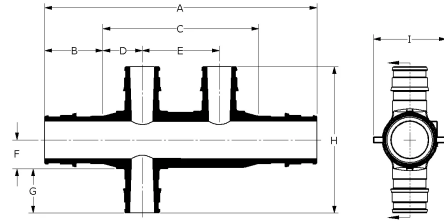
EP flow-through opposing-port multi-port tees

Project Information

Job name:	Location:
Engineer:	Date submitted:
Contractor:	Submitted by:
Manufacturer's representative:	Approved by:

Technical data

Material	Engineered Polymer
End type 1	ProPEX 3/4"
End type 2	ProPEX 3/4"
End type 3	ProPEX 1/2"
End type 4	ProPEX 1/2"
Temp/pressure ratings	73 °F (23 °C) at 160 psi (11 bar) 180 °F (82 °C) at 100 psi (6.9 bar) 200 °F (93 °C) at 80 psi (5.5 bar)
Prop 65 label required?	No



Product information and application use

Engineered polymer (EP) flow-through opposing-port multi-port tees feature 3/4" ProPEX® inlets with opposing 1/2" ProPEX branch outlets. The tees are designed for central location to facilitate piping in two directions

Note: Temperature and pressure ratings stated are hydrostatic ratings. For domestic hot-water (DHW) and DHW recirculation installations, operating conditions should not exceed 140°F (60°C) at 80 psi (5.5 bar) in accordance with ASTM F2023. For additional information regarding application-specific temperature and pressure ratings, refer to the Uponor PEX Piping Systems Design and Installation Manual.

Part name	Part no.	A [inch]	B [inch]	C [inch]	D [inch]	E [inch]	F [inch]	G [inch]	H [inch]	I [inch]	Equivalent length through [ft]
EP Flow-through Opposing-port Multi-port Tee, 3 (1/2") outlets, 3/4" x3/4" ProPEX	Q2337557	4.41	0.955	2.5	0.625	1.25	0.467	0.719	2.373	1.18	1.57
EP Flow-through Opposing-port Multi-port Tee, 4 (1/2") outlets, 3/4" x3/4" ProPEX	Q2347557	4.41	0.955	2.5	0.625	1.25	0.467	0.719	2.373	1.18	1.28
EP Flow-through Opposing-port Multi-port Tee, 6 (1/2") outlets, 3/4" x3/4" ProPEX	Q2367557	5.66	0.955	3.75	0.625	1.25	0.467	0.719	2.373	1.18	1.32

Part name	Part no.	Weight per UOM [lbs/UOM]
EP Flow-through Opposing-port Multi-port Tee, 3 (1/2") outlets, 3/4" x3/4" ProPEX	Q2337557	0.07
EP Flow-through Opposing-port Multi-port Tee, 4 (1/2") outlets, 3/4" x3/4" ProPEX	Q2347557	0.08
EP Flow-through Opposing-port Multi-port Tee, 6 (1/2") outlets, 3/4" x3/4" ProPEX	Q2367557	0.11

Part name	Part no.	Codes	Standards	Listings
EP flow-through opposing-port multi-port tees	All	UPC IBC IRC IPC NPC of Canada UMC NSPC IMC	ASTM E814 ULC S115 ASTM F877 ASTM F1960 CSA B137.5 JULC S102.2 ASTM E119 UL 263 NSF/ANSI/CAN 61 JULC S101 NSF/ANSI 14	IAPMO-ES HUD MR 1269 ICC-ES-PMG cNSF-us-pw UL U.P.Code cQAlus P321

Installation

Use any product designed to mount 1" copper pipe as a mounting bracket. For more information, refer to the Uponor AquaPEX® Professional Plumbing Installation Guide.

Related applications

PEX-a Plumbing Systems

Footnotes

Contact information

Uponor Inc.
5925 148th Street West
Apple Valley, MN 55124
T 800.321.4739
F 952.891.2008

Uponor Ltd.
6510 Kennedy Road
Mississauga, ON L5T 2X4
T 888.594.7726
F 800.638.9517