

# EP flow-through multi-port tees

Submittal information

Date submitted :

## Project Information

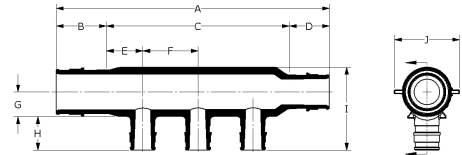
|                                 |                  |
|---------------------------------|------------------|
| Job name :                      | Location :       |
| Engineer :                      | Date submitted : |
| Contractor :                    | Submitted by :   |
| Manufacturer's representative : | Approved by :    |

## Technical Data

|                        |  |
|------------------------|--|
| Material               | Engineered Polymer   |
| End type 4             | ProPEX 1/2"  |
| Temp./pressure ratings | 73°F (23°C) at 160 psi (11 bar)<br>180°F (82°C) at 100 psi (6.9 bar)<br>200°F (93°C) at 80 psi (5.5 bar) |

## Product information and application use

Engineered polymer (EP) flow-through multi-port tees feature 3/4" or 1" ProPEX® inlets with 1/2" ProPEX branch outlets. The tees are made of EP, a high-performance material used in demanding, hot-water applications



| Part name   | Part no. | A [inch] | B [inch] | C [inch] | D [inch] | E [inch] | F [inch] | G [inch] | H [inch] | I [inch] | J [inch] |
|---|----------|----------|----------|----------|----------|----------|----------|----------|----------|----------|----------|
| EP Flow-through Multi-port Tee, 2 outlets, 3/4" x 3/4" ProPEX | Q2227557 | 4.41     | 0.955    | 2.5      | 0.955    | 0.625    | 1.25     | 0.54     | 0.719    | 1.696    | 1.22     |
| EP Flow-through Multi-port Tee, 3 outlets, 1" x 3/4" ProPEX   | Q2231057 | 6.196    | 1.191    | 4.05     | 0.955    | 0.775    | 1.25     | 0.6      | 0.719    | 1.879    | 1.48     |
| EP Flow-through Multi-port Tee, 3 outlets, 3/4" x 3/4" ProPEX | Q2237557 | 5.79     | 0.955    | 3.88     | 0.955    | 0.69     | 1.25     | 0.54     | 0.719    | 1.696    | 1.22     |
| EP Flow-through Multi-port Tee, 4 outlets, 1" x 1" ProPEX     | Q2241051 | 7.682    | 1.191    | 5.3      | 1.191    | 0.775    | 1.25     | 0.6      | 0.719    | 1.879    | 1.48     |
| EP Flow-through Multi-port Tee, 4 outlets, 1" x 3/4" ProPEX   | Q2241057 | 7.146    | 1.191    | 5        | 0.955    | 0.625    | 1.25     | 0.57     | 0.719    | 2.009    | 1.441    |
| EP Flow-through Multi-port Tee, 4 outlets, 3/4" x 3/4" ProPEX | Q2247557 | 7.795    | 0.955    | 5.885    | 0.955    | 0.693    | 1.5      | 0.448    | 0.719    | 1.766    | 1.199    |
| EP Flow-through Multi-port Tee, 6 outlets, 1" x 1" ProPEX     | Q2261051 | 9.882    | 1.191    | 7.5      | 1.191    | 0.625    | 1.25     | 0.57     | 0.719    | 2.009    | 1.441    |
| EP Flow-through Multi-port Tee, 6 outlets, 1" x 3/4" ProPEX   | Q2261057 | 9.646    | 1.191    | 7.5      | 0.955    | 0.625    | 1.25     | 0.57     | 0.719    | 2.009    | 1.441    |
| EP Flow-through Multi-port Tee, 6 outlets, 3/4" x 3/4" ProPEX | Q2267557 | 9.41     | 0.955    | 7.5      | 0.955    | 0.625    | 1.25     | 0.457    | 0.719    | 1.624    | 1.18     |
| 1" EP Branch Multi-port Tee, 7 outlets with mounting clips    | Q2271051 | 8.891    | 1.191    | 1.1      | 0.9      | 0.65     | 0.719    | 2.054    | 1.768    | -        | -        |

| Part name   | Part no. | Cv Through | Weight per UOM [lbs/UOM] | Equivalent length through [ft] | End type 1    | End type 2    | End type 3  |
|---|----------|------------|--------------------------|--------------------------------|---------------|---------------|-------------|
| EP Flow-through Multi-port Tee, 2 outlets, 3/4" x 3/4" ProPEX | Q2227557 | 15.3       | 0.07                     | 1.57                           | ProPEX 3/4"   | ProPEX 3/4"   | ProPEX 1/2" |
| EP Flow-through Multi-port Tee, 3 outlets, 1" x 3/4" ProPEX   | Q2231057 | 11.6       | 0.22                     | 3.15                           | ProPEX 1-1/4" | ProPEX 1-1/4" | ProPEX 3/4" |
| EP Flow-through Multi-port Tee, 3 outlets, 3/4" x 3/4" ProPEX | Q2237557 | 14.2       | 0.1                      | 2                              | ProPEX 3/4"   | ProPEX 3/4"   | ProPEX 1/2" |
| EP Flow-through Multi-port Tee, 4 outlets, 1" x 1" ProPEX     | Q2241051 | 29.3       | 0.18                     | 1.53                           | ProPEX 1"     | ProPEX 1"     | ProPEX 1/2" |
| EP Flow-through Multi-port Tee, 4 outlets, 1" x 3/4" ProPEX   | Q2241057 | 11.7       | 0.17                     | 3.02                           | ProPEX 1"     | ProPEX 3/4"   | ProPEX 1/2" |
| EP Flow-through Multi-port Tee, 4 outlets, 3/4" x 3/4" ProPEX | Q2247557 | 13.8       | 0.14                     | 2.18                           | ProPEX 3/4"   | ProPEX 3/4"   | ProPEX 1/2" |
| EP Flow-through Multi-port Tee, 6 outlets, 1" x 1" ProPEX     | Q2261051 | 25.1       | 0.25                     | 2.51                           | ProPEX 1"     | ProPEX 1"     | ProPEX 1/2" |

|  |          |      |      |      |             |             |             |
|--|----------|------|------|------|-------------|-------------|-------------|
| EP Flow-through Multi-port Tee, 6 outlets, 1" x 3/4"<br>ProPEX   | Q2261057 | 11.8 | 0.24 | 3.09 | ProPEX 1"   | ProPEX 3/4" | ProPEX 1/2" |
| EP Flow-through Multi-port Tee, 6 outlets, 3/4" x 3/4"<br>ProPEX | Q2267557 | 13.2 | 0.17 | 2.34 | ProPEX 3/4" | ProPEX 3/4" | ProPEX 1/2" |
| 1" EP Branch Multi-port Tee, 7 outlets with mounting clips       | Q2271051 | -    | 0.33 | -    | ProPEX 1"   | ProPEX 1/2" | -           |

| Installation | Related applications |
|--------------|----------------------|
|--------------|----------------------|

For a mounting bracket, use any product designed to mount 1" copper pipe for the 3/4" EP flow-through multi-port tees or 1 1/4" copper pipe for the 1" EP flow-through multi-port tees. For more information, refer to the Uponor Piping Systems Installation Guide.

PEX-a Plumbing Systems

| Codes | Standards | Listings |
|-------|-----------|----------|
|-------|-----------|----------|

UPC|IBC|IRC|IPC|NPC of Canada|UMC|NSPC|IMC

ASTM E814|ULC S115|ASTM F877|ASTM F1960|CSA B137.5|ULC S102.2|ASTM E119|UL 263|NSF-61|ULC S101|NSF-14

IAPMO-ES|HUD MR 1269|ICC-ES-PMG|cNSFus-pw|UL|U.P.Code|cQAIus P321

| Notes |
|-------|
|-------|

Maximum multi-port tee flow for 3/4" inlet:

8.8 gpm at 8 fps

13.2 gpm at 12 fps

Maximum multi-port tee flow for 1" inlet:

14.5 gpm at 8 fps

21.8 gpm at 12 fps

Maximum multi-port tee flow for 1 1/4" inlet:

| Trademark Information | Contact information |
|-----------------------|---------------------|
|-----------------------|---------------------|

ProPEX® is a registered trademark of Uponor Inc. ProPEX™ is a trademark of Uponor Ltd.

Uponor Inc.  
5295 148th Street West  
Apple Valley, MN 55124  
T 800.321.4739  
F 952.891.2008

Uponor Ltd.  
6510 Kennedy Road  
Mississauga, ON L5T 2X4  
T 888.594.7726  
F 800.636.9517