



2013 Product Catalog Supplement

SEALED UNIT PARTS CO., INC.
PO Box 21, 2230 landmark Place, Allenwood, NJ 08720 USA
Phone: 732-223-6644 Fax: 732-223-1617
www.supco.com • info@supco.com



Table of Contents

HVAC	Page
AC Hard Starts	3
Air Pressure Switch Kits	18
Blow Out Valves	7
CAMSTAT® Controls	20
Capillary Tubing	10
Chart Recorders	12
Chemicals	28
Commercial Controls	5
Compressor Terminal Repair Kit	6
Condensate Drains	8
Condensate Pumps	8
Condensate Tablets	8
Contactors	31
Data Loggers	10, 11
Drain Heaters	8
Driers	31
ECAP321	26
Fan Centers, Ducts & Heaters	26
Flashlights	26
Igniters	17, 18
Instruments	14, 15
Insulation Testers	15
LI'L Popper® (Circuit Breaker)	27
Motor Protectors	4
Motor Run Capacitors	29
Motor Start Capacitors	30
Motors	30, 34
Pocket & Appliance Thermometers	16
Pressure Switches	9
Refrigeration Condensate Pans	7
Relays	6
Sail Switch	24
Sequencers & Thermostats	21
SICCOM® Condensate Pumps	8
Surge Protectors	4
Temperature Alarms	12, 13
Thermometers	16
Thermostat Guards	19
Thermostats	21, 22, 23, 24
Tools	27
Transformers	25
Troubleshooter	27
Vacuum Gauges	13
Vacuum Sentry	13
Valves & Access Fittings	10
Vibration Absorbers	25
Wall Thermostats	19
Water Alarms	7

APPLIANCE	Page
Appliance Book Store	35
Cold Controls	42
Condensor Fan Motors	32
Crisper Shelf	39
Defrost Timers	40, 41
Defrost Heaters	43
Dishwasher Repair Parts	46, 47
Driers	44
Dryer & Washer Repair Parts	47
Icemaker Replacement Kits	36
Icemaker Replacement Parts	37
Icemaker/Humidifier Installation Kits	37
Magnetic & UV Filter Driers	32
Motors	34, 35
Odor Absorber	39
Oven Range Igniters	45
Range Products	45
Receptacle Kit	32
Refrigerator Door Gaskets	40
Refrigeration Hard Start Kits	33
Repair for LG® Parts	45
SUB ZERO® Replacement Parts	40
Surface Elements	46
Surge Arrestor	35
Thermostats	42, 43
UV Glasses	32
Valves & Fittings	35
Washer Repair Parts	44
Water Alarm	35
Water Filters	38, 39

**New Website
Coming Soon!
www.supco.com**

SUPCO® MERCHANDISING

2012 Banner
36" X 24" Part Number F482

2012 Header for Overlay
24" X 12" Part Number F483

2012 Window Decal
9" X 5" Part Number F487
Part number F487

Slotwall Overlay
24" X 48" Part Number F474

Out of Stock Cards
3" X 4" Part Number F285

Pegboard Hooks
Part Number F293
8 Hooks included with Pegboard Overlay

Pegboard Push Pins
Part Number F488
8 Pins included with Pegboard Overlay

Pegboard/Slotwall Header Hardware
Part Number F476 (2 Included)
Part Number F475 (3 Included)
Part Number F475 (3 Included)

Slotwall Hooks
Part Number F489
8 Hooks included with Slotwall Overlay

Pegboard Overlay
24" X 48" Part Number F484

Sheet Overlay
24" X 3" Part Number F435



SEALED UNIT PARTS CO., INC.
2230 Landmark Place
Allenwood, NJ 08720 USA

Merchandising Kits Available!

AC HARD STARTS

Your Source For All Hard Starts



ULTRA Series

2-wire mechanical potential relay hard start

- OEM Approved Technology
- Voltage Sensing
- Instant Re-Start
- Easy 2-wire installation
- 2 Year Warranty

PART NO.	APPLICATION	CAPACITOR SIZE	REPLACES
MPR5	1 to 3 hp	189-277 μ F; 330V	Kickstart® TO-5
MPR1	3.5 to 5 hp	270-324 μ F; 330V	Kickstart® KS-1

For further information refer to Product Sheet F441/F416

3 Series

3-wire mechanical potential relay hard start

- Voltage Sensing
- Instant Re-Start
- 35 Amp Relay Contacts
- 208 / 240 Volts
- Includes EZ Snap Bracket for quick installation

For further information refer to Product Sheet F441



PART NO.	APPLICATION	CAPACITOR SIZE (μ F)	REPLACES
3W1	1 – 3 hp	88 – 108 μ F	CSRU1
3W2	3.5 – 4.5 hp	189 – 227 μ F	CSRU2
3W3	4 – 5 hp	270 – 324 μ F	CSRU3

SPPE 'E Class' SERIES

Electronic Potential Relay Technology

Economical Potential Relay, with the comfort of a backup safety.

Features / Benefits

- Electronic Potential Relay
- Backup electronic timing circuit to protect the compressor
- Voltage sensing
- Instant Re-Start
- Easy 2 - wire installation
- Can be used on PSC and CSIR type compressors
- 170 - 277 VAC

For further information refer to Product Sheet F441



PART NO.	APPLICATION (hp)	CAPACITOR Size (μ F)
SPP6E	1/2 – 3	88–106
SPP7E	1 – 4	130–156
SPP8E	1 and up	189–227

SPP SUPER BOOST SERIES

PTC Technology

The "Original" 2-wire Hard Start. The fastest selling Hard Start Kit. Provides field proven reliability.

Features / Benefits

- Positive Temperature Coefficient Relay Technology (PTC)
- Field proven reliability
- Easy 2 – wire installation
- Most economic
- 90 - 277 VAC

For further information refer to Product Sheet F441



PART NO.	INCREASE IN TORQUE (%)
SPP5	300%
SPP6	500%
SPP7S	600%

USR

Universal Starting Relay with Capacitor for Commercial Refrigeration

Features / Benefits

- For compressors from 1/2 hp thru 5 hp
- Pre-wired for easy installation
- Potential Relay Technology



SURGE PROTECTORS

COMPRESSOR PROTECTION PACKAGE

CPP Series

A Hard Start Kit

- Starts the air conditioning system in difficult times
- Protects it from potentially damaging start-up current
- Reduces energy costs

A Surge Protector

- Protects the air conditioning system from potentially damaging power surges

Choose from 6 different styles to match system needs

PART NO.	DESCRIPTION	CONNECTION TYPE	POTENTIAL RELAY TYPE	COMPRESSOR SIZE
CPPMPR1	SCM150 & MPR1	2 - wire	Mechanical	3.5 – 5 hp
CPPMPR5	SCM150 & MPR5	2 - wire	Mechanical	1 – 3 hp
CPP8E	SCM150 & SPP8E	2 - wire	Electronic	1 – 10 hp
CPP3W1	SCM150 & 3W1	3 - wire	Mechanical	1 – 3 hp
CPP3W2	SCM150 & 3W2	3 - wire	Mechanical	3.5 – 4.5 hp
CPP3W3	SCM150 & 3W3	3 - wire	Mechanical	4 – 5 hp

For further information refer to Product Sheet F467



SCM60 & SCM150 Surge Arrestors

Protect your equipment with SUPCO's Surge Arrestors. With multiple levels of protection, we can cover all your needs.

- Easy Installation at Disconnect or Panel
- Weatherproof Housing
- Green LED to indicate Surge Protection is present



UL File #E175789
UL1449 3rd Edition
Listed Type 2 SPD

3 Phase Surge Arrestors SYCTC2403D & SYCTC4803D

- 240, 480 volt three phase protection
- 50,000 amps protection, per phase
- Diagnostic Light for each phase
- NEMA 4 Enclosure



SPECIFICATIONS

	SYCTC2403D	SYCTC4803D
Service Voltage	240 Volt, 3 Phase Delta	480 Volt, 3 Phase Delta
Maximum Surge Current	50,000 Amps per mode, 150,000 Amps total	50,000 Amps per mode, 150,000 Amps total
AC Protection Modes	L-L, L-G	L-L, L-G
Response Time	< 5 ns	< 5 ns
Operating Frequency	0 – 400 Hz.	0 – 400 Hz.
Diagnostics	Green LED lit - Indicates Surge Protection Present	Green LED lit – Indicates Surge Protection Present
Installation Point	Load side of Breaker	Load side of Breaker
Connection Method	Hardwired parallel	Hardwired parallel
Wire gauge, length	12 AWG, 18" long	12 AWG, 18" long
Agency Approvals	UL, cUL, ANSI/ IEEE C62.11	UL, cUL, ANSI/ IEEE C62.11
Housing	High Impact Plastic	High Impact Plastic
Housing Size	5 3/4 " x 6 1/2 " x 3"	5 3/4 " x 6 1/2 " x 3"
Weight	4 lbs.	4 lbs.
Warranty	10 years	10 years

* Note: SYC-TC240-3D can be used in 208/240 Delta applications.

SYC2P27B

Low Voltage Circuit Surge Arrestors

Protection for low voltage control circuit

- 0-24V AC or DC
- 27V Clamping Voltage
- Single pair
- Bi-directional protection
- One Surge Arrestor per circuit



For further information refer to Product Sheet F431

MOTOR PROTECTORS

TPMPU

Universal 3-Phase Motor Protector

Economic motor protection w/full voltage range & adjustable imbalance

Protects Against:

- Phase Loss
- Improper Phase Sequence
- Phase Imbalance (4%-20% Adjustable)

One 3-Phase Motor Protector
for All Applications!



TPMP2

Three Phase Motor Protector

Protects Against:

- Phase Loss
- Phase Imbalance (7% Fixed)



COMMERCIAL CONTROLS

ST100 Series General Purpose Timer Switches

- Economical
- Electro-mechanical switching
- Switch Rating: 40 A, Resistive
- Single Pole or Double Pole
- Non-corrosive NEMA 1 case

For further information refer to Product Sheet F433



PART NO.	VOLTS	SWITCH	CROSS REFERENCE
ST101	120	SPST	Paragon® 4001-00, Intermatic® T101, Precision® CD101
ST102	240	SPST	Paragon® 4002-71, Intermatic® T102, Precision® CD102
ST103	120	DPST	Paragon® 4003-00, Intermatic® T103, Precision® CD103
ST104	240	DPST	Paragon® 4004-71, Intermatic® T104, Precision® CD104

S8000 Series Commercial Defrost Controls

- Heavy-duty synchronous motor
- Adjustable defrost frequency up to six (6) times per day
- Adjustable cycle duration from 4 to 110 minutes
- Heavy-duty steel case

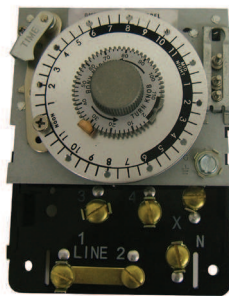


For further information refer to Product Sheet F401

PART NO.	VOLTAGE	SWITCHING		TIME INITIATED TIME TERMINATED	TIME INITIATED TEMPERATURE OR PRESSURE TERMINATED	PARAGON® MODEL NO.
		NO NORMALLY OPEN	NC NORMALLY CLOSED			
S804100	120/60 Hz	1 NO / 2 NC	1 NO / 2 NC	YES	NO	8041-00
S804120	240/60 Hz	1 NO / 2 NC	1 NO / 2 NC	YES	NO	8041-20
S804500	120/60 Hz	1 NO / 1 NC	1 NO / 1 NC	YES	NO	8045-00
S804520	240/60 Hz	1 NO / 1 NC	1 NO / 1 NC	YES	NO	8045-20
S814100	120/60 Hz	1 NO / 2 NC	1 NO / 2 NC	NO	YES	8141-00
S814120	240/60 Hz	1 NO / 2 NC	1 NO / 2 NC	NO	YES	8141-20
S814500	120/60 Hz	1 NO / 1 NC	1 NO / 1 NC	NO	YES	8145-00
S814520	240/60 Hz	1 NO / 1 NC	1 NO / 1 NC	NO	YES	8145-20
S814521	240/50 Hz	1 NO / 1 NC	1 NO / 1 NC	NO	YES	8145-21

M814520 EXACT FIT Commercial Defrost Mechanism

Direct replacement for Paragon® 8145-20



Sold in convenient 6-pack counter display!

TIMERS

EDT Series - Universal Electronic Adjustable Defrost Timers

Replaces most timers being used in today's domestic refrigerators and freezers!



EDT10

PART NO.	HP	AMP	CONTACTS
EDT10	1/3	10	1
EDT11	3/4	20	1
EDT12	1	25	1
EDT13	1	25	2

Time Delays - Delay on Make or Delay on Break

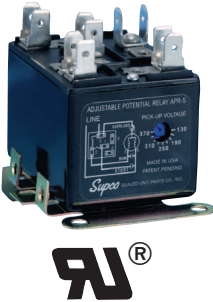
PART NO.	DESCRIPTION
TD69	DOM, w/anticipator wire
TD73	DOB, w/anticipator wire



TD69



RELAYS



APR5 Adjustable Potential Relay

- Adjustable, Voltage Sensitive Relay
- Set pick-up voltage
- Safety time out 1.0 – 1.5 seconds



SUPR Universal Potential Relay

- Time Function Relay
- Start Time: 1.0 - 1.5 seconds

APR5 / SUPR Common Specifications

Operating Voltage	110 – 270 VAC, Single Phase
Amperage	30 Amps
Motor Power Rating	up to 5 hp
Operating Position	Non-positional mounting.
Terminals	Screw or push-on.
Dimensions	1.75W x 2.25L x 1.50H

For further information refer to Product Sheet F417



SEPR60 Universal 2 - Wire Potential Relay

- Voltage Sensitive Relay
- Instant Re-Start
- Safety time delay
- Use with any size suitable Start Capacitor

For further information refer to Product Sheet F417

SEPR60 Specifications

Operating Voltage	208 – 277 VAC, Single Phase
Amperage	40 Amps
Motor Power Rating	1 hp - 10 hp
Mounting	Non Positional
Terminals	Qty 3, 1/4" Male Spade



90XX Series Potential Relays

- Meets all requirements of OEM relays
- Universal break-off bracket

Features / Benefits

- 50 / 60 cycle
- Contact rating 35 amp @ 277 VAC
- Non-positional

PART NO.	CONTINUOUS		PICK-UP MIN.	PICK-UP MAX.	DROP MAX.
	COIL VOLTAGE				
9063	170		139	153	55
9064	395		260	275	120
9065	332		168	182	90
9066	395		215	225	120
9067	420		295	315	125
9068	502		325	345	135
9069	336		180	195	105
9070	332		285	305	85
9071	420		212	232	121



903X Series General Purpose Switching Relays

- Double pole – double throw (DPDT)

PART NO.	COIL VOLTAGE	TERMINAL		CROSS REFERENCE	
		1-2-3	4-5-6	ESSEX®/RBM®	HONEYWELL®
90340	24	power	power	90-340	R8222D1014
90341	120	power	power	90-341	R4222D1013
90342	208/240	power	power	90-342	R4222N1021

Fan Relays

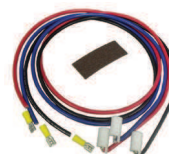
PART NO.	DESCRIPTION	AMPS	COIL VOLTAGE
90290	SPST	4	24V
90291	SPST	4	120V
90292	SPST	4	240V
90293	SPDT	1	24V
90294	SPDT	1	120V
90295	SPDT	1	240V

Fan Relays

PART NO.	DESCRIPTION	AMPS	COIL VOLTAGE
90370	SPDT	12	24V
90372	SPDT	12	120V
90374	SPDT	12	240V
90380	NO/NC	13	24V
90382	NO/NC	13	120V
90384	NO/NC	13	240V

EC10 Easy Connect

- Compressor Terminal Repair Kit
- Fast, Easy Installation
- Three 10 AWG Wires – 3' Long
- Fully Insulated Terminal Connectors
- Spade connectors included



REFRIGERATION CONDENSATE PANS

Designed for durability and long life, these high value pans are unmatched in quality.



- Corrosion resistant stainless steel construction
- Available In 120 volts, 208 volts and 240 volts
- Positive evaporation
- Space saving
- High limit safety and float switch operation
- Warranty One Year from date of installation

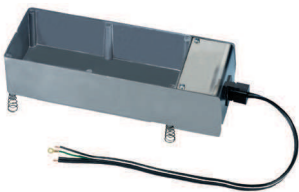


For further information refer to Product Sheet F221

PART NO.	CAPACITY	WATTS	VOLTS	DISSIPATION RATE PER DAY	FISHER EVAPOWAY®	DIMENSIONS L x W x H
					PART NO.	
CP801	1 3/4 QT	400	120	3 Gallon	DM04T-1S	10 x 7 x 2.5
CP802	2 1/2 QT	800	120	6 Gallon	DM08S-1S	13 x 7 x 2.5
CP802-240	2 1/2 QT	800	240	6 Gallon	DM08S-3S	13 x 7 x 2.5
CP804	4 1/2 QT	1000	120	6 Gallon	DM10M-S1	13 x 7 x 4
CP804-240	4 1/2 QT	1000	240	6 Gallon	DM10M-S3	13 x 7 x 4
CP804HD	7 1/2 QT	1000	120	6 Gallon	DM10W-1D	13 x 10 x 4
CP804HD-240	7 1/2 QT	1000	240	6 Gallon	DM10W-3D	13 x 10 x 4
CP807	7 1/2 QT	1000	120	10 Gallon	DM10W-1S	13 x 10 x 4
CP807-240	7 1/2 QT	1000	240	10 Gallon	DM15WW-1D	13 x 10 x 4
CP808	15 QT	1000	120	8 Gallon	DM10WW-1D	21 x 13 x 4
CP815	15 QT	1440	120	12 Gallon	DM10W-3	21 x 13 x 4
CP815-240	15 QT	1500	240	12 Gallon	DM15WW-3	21 x 13 x 4
CP816	7 QT	500	120	4.5 Gallon	DM05W-1D	13 x 10 x 4
CP817	7 QT	1000	208	8 Gallon	DM10W-2D	13 x 10 x 4
CP818	7 QT	1000	208	8 Gallon	DM10W-2S	13 x 10 x 4
CP819	7 QT	1500	120	12 Gallon	DM15W1D	13 x 10 x 4
CP820	7 QT	1500	208	12 Gallon	DM15W2D	13 x 10 x 4
CP821	15 QT	1500	208	12 Gallon	DM15WW-2D	21 x 13 x 4

Cast Aluminum Condensate Drains complete with long life heating element and mounting legs.

70



- PTC Controlled
- Self Regulating

PART NO.	CAPACITY	VOLTS	WATTS	EVAPORATOR	
				RATE	SIZE
70*	50 oz	117	300	4-5 oz/hr	12 1/4 x 4 3/4 x 3
75	75 oz	120	320	14 oz/hr	10" x 9" x 2 3/4"
30-OS	38 oz	120	160	8 oz/hr	10 x 4 x 2 7/8

* Indicates NSF® Approved



30-OS



- Designed for continuous use

LD10

Line Drive Blow Out Valve

Used with CO₂ or Nitrogen, this two way blow out valve is economically priced and easy to use for condensate line maintenance.

- Condensate Line Size: 3/4" schedule 40 PVC material
- Hose Connection Size: 1/4" male flare (with Schrader)



For further information refer to Product Sheet F455

WWG1

Wireless Water Guard

- Electronic alarm detects water to prevent damage, mold and unsafe conditions.
- A wireless alarm allows monitoring of remote spaces, such as basements and attics.
- Loud 80 dB alarm on the WWG1, 110 db on the R10 remote receiver
- 3 AAA battery operated (not included)
- This equipment has been tested and found to comply with the limits for a class B digital device, pursuant to part 15 of the FCC rules.

COMING SOON!



R10

WA100

Condensate Water Alarm w/ Remote Sensor

- Protect property and valuable possessions
- 85 dB alarm sounds for up to 3 days
- Remote Sensor has 6 foot wire

For further information refer to Product Sheet F139



WG1 Water Guard Economical Water Alarm

- 90 db alarm

For further information refer to Product Sheet F461





MINI-SPLIT CONDENSATE PUMPS

These quiet & reliable piston style pumps are designed to remove condensate water in mini-split systems up to 42,000 BTUs. The 3-wire pump includes a N.O. / N.C. safety switch to shut the system down in the event of condensate overflow. These 2-piece compact size pumps include a waterproof pump module & detection module for easy installation.

Features / Benefits

- Removes condensate for systems up to 42,000 BTUs
- 4 GPH
- 24 foot maximum lift
- Vertical Suction: 6 foot maximum
- USA & Canada Agency Affiliations: ETL Listed 4000786 / CSA Certified C22.2 NO. 108 / Conforms To UL STD 778
- Noise Level: <21dB @ 3.3' distance
- Thermally protected
- Alarm level to prevent overflow
- Waterproof connections prevent water ingress
- Piston pump provides long life
- Optional Mounting Kit: # GC1KFX2010
- 2-year warranty



**A complete kit for a fast, easy and professional installation...
Just cut the plastic duct to size and mount in minutes**

For further information refer to Product Sheet F470

FLOWATCH® Design

Mini-Split Condensate Pump with plastic duct & installation kit

- Includes mini FLOWATCH®2 Pump
- Includes over 2 ½ feet of plastic duct
- Includes all mounting hardware
- Pre-mounted and wired in plastic duct
- 2 year warranty

SICCOM® Condensate Pump Line Up

2-WIRE	115V	230V	N.O. SAFETY SWITCH	N.O. / N.C. SAFETY SWITCH	PUMP ONLY	PUMP W/ PLASTIC DUCT
DE05LUA520	X		X		X	
DE005LUA720		X	X		X	
DE05LUA660	X		X			X
3-Wire						
DE05LUB100	X			X	X	
DE05LUB110		X		X	X	
DE05LUB120	X			X		X
DE05LUB130		X		X		

CONDENSATE PUMP / TABLETS / HEATER / DRAIN

CP1A Series

This condensate pump is suitable for use with condensate from high efficiency condensing furnaces and boilers which produce acidic condensate. shut-down and optional alarm as needed.

For further information refer to Product Sheet F491

PART NO.	VOLTS	LIFT IN FEET	GPH
CP1A	115	22	10
CP1A-230 V	230	22	10



SO100 / ST200

Condensate Pan Conditioning Tablets

	PART NO. SO100	PART NO. ST200
Description	Slime Out Tablets/Jar	Slime Tab
Tablet Size	35 grams	20 grams
Initial Application	2 tabs/3 tons	3 tabs/3 tons
Maintenance	2 per month	3 per month



Slimeout®

For further information refer to Product Sheet F140

SH250

Universal Drain Heater

- 120 Volts
- 3 Watts



DP34 Drain Plus

Condensate Drain

- Eliminates "dry-trap" syndrome
- Fits 3/4" drain lines
- Ideal for main and auxiliary drains



For further information refer to Product Sheet F175

PRESSURE SWITCHES

Automatic Reset High, Low & Condenser Fan Cycling Pressure Switches

- Life Cycles @ RLA 100,000 Average • Maximum LRA 36 Amps
- Maximum RLA Volts** 12 to 28 VDC / VAC
48 VDC / VAC
110 to 120 VAC
208 to 240 VAC
- RLA** 10 Amps
5 Amps
5.8 Amps
2.9 Amps

Temperatures

Ambient: 20°F to 176°F (-30°C to 80°C)
Fluid: 60°F to 250°F (-50°C to 120°C)

Pressure Ranges

Working: 0 to 650 PSI, Bursting: 5,000 PSI
Connection: 1/4" SAE Female Flare With Valve Core Depressor
Wire Leads: UL1015 18 AWG / 18" Length



Specifications

PART NO.	OPEN PSI (CUT-OUT)	CLOSE PSI (CUT-IN)	TOLERANCE +/- PSI	MARS®	JOHNSON CONTROLS®	RANCO®	ROBERTSHAW®	R410A APPLICATION
Low Pressure Open On Pressure Drop								
SLP0520	5	20	5	33329	P100AC1C	MPL7001	3101001	
SLP0530	5	30	5	43342	N/A	N/A	3100002/MG201132	
SLP1025	10	25	5	33330	P100AP201C	MPL7011	3100050	
SLP1032	10	32	5	33330	P100AP201C	MPL7011	3100050	X
SLP1535	15	35	5	43371	P100AC2	MPL7002	3100001/MG201026	X
SLP2045	20	45	5	43345	N/A	N/A	3100003/MG201133	
SLP2550	25	50	5	43372	N/A	MPL7012	MG212033	X
SLP2565	25	65	5	33336/43347	N/A	N/A	3101002	
SLP2580	25	80	5	33363/43348	N/A	MPL7003	3101003/3100051	
SLP3560	35	60	5	43349	N/A	MPL7004	3100004/MG201593	
SLP4560	45	60	5	43351	P100AP2C	MPL7005	N/A	
SLP4080	40	80	5	33364/43350	N/A	MPL7014	3101005/3100052	
SLP5090	50	90	5	33339/43374	N/A	N/A	N/A	X
SLP75100	75	100	5	33342/43353	N/A	N/A	N/A	X
SLP90120	90	120	5	43375	N/A	N/A	N/A	X
High Pressure Open On Pressure Rise								
SHP200150	200	150	15	33353	N/A	N/A	N/A	
SHP250150	250	150	15	33354/43322	N/A	N/A	N/A	
SHP250180	250	180	15		N/A	N/A	N/A	
SHP275195	275	195	15	33310/43324	P100CC9C	MPH7102	3100-112	
SHP300200	300	200	15	33355/43325	N/A	MPH7103	N/A	
SHP325225	325	225	15	43326	N/A	MPH7104	N/A	
SHP325230	325	230	15	33313	N/A	N/A	N/A	
SHP350250	350	250	15	33356/33316/43327		N/A	MPH71053101201/3100150	
SHP375265	375	265	15	33319/43328	N/A	MPH7106	3100111	
SHP400200	400	200	15	33357/43329	N/A	N/A	3100152	
SHP400280	400	280	15	33322/43330	N/A	N/A	N/A	
SHP400300	400	300	15	33358/33370	P100CA1C/P100CP1C	MPH7107	3101202/3100151/MG21-112	
SHP425300	425	300	15	33325/43332	N/A	N/A	N/A	
SHP425325	425	325	15	43333	P100CA2C/P100CP2C	MPH7108	3100100/3100203/MG211046	
SHP450250	450	250	15	33359/43334	N/A	N/A	N/A	
SHP480380	480	380	15	N/A	N/A	N/A	N/A	
SHP550450	550	450	15	N/A	P100CE11D	N/A	N/A	X
SHP600475	600	475	15	33361/43335	N/A	N/A	N/A	
SHP610420	610	420	15	43366/43376	N/A	N/A	N/A	
SHP665565	665	565	15	N/A	P100CP85D	N/A	N/A	X
Manual High Pressure Open On Pressure Rise								
SMR375	375	Manual	15	43312	P100DC3C	MPH7109	N/A	
SMR410	410	Manual	15	33365/43313	P100DA1C	MPH7110	3101301/3100103	
SMR440	440	Manual	15	33352/43315	N/A	N/A	3100104	
SMR575	575	Manual	15	43368	P100DA86D	N/A	N/A	X
SMR610	610	Manual	15	43369	N/A	N/A	N/A	X
SMR630	630	Manual	15	N/A	P100DA81C/D	N/A	N/A	X
Fan Cycle Close On Pressure Rise								
SFC75120	75	120	15	43301	N/A	MPF7006	N/A	
SFC110170	110	170	15	43302	N/A	MPF7007	N/A	
SFC125265	125	265	15	33340/43303	N/A	N/A	N/A	
SFC210275	210	275	15	33341	N/A	MPF7009	3101101/3100079	
SFC150225	150	225	15	43304	P100AP3C	MPF7008	N/A	
SFC170250	170	250	15	N/A	P100AP4C	N/A	N/A	
SFC200240	200	240	15	N/A	N/A	N/A	3100080	
SFC200365	200	365	15	N/A	N/A	N/A	N/A	X
SFC300400	300	400	15	43307	N/A	MPF7010	N/A	X

CAPILLARY TUBING

SUPCO is now offering 20 sizes of capillary tubing in service packs and 100 foot rolls. All of the most popular sizes.

Standard Service Packs

OLD PART NO.*	NEW PART NO.	LENGTH	DESCRIPTION
	BC26X16	16 feet	.026 ID X .071 OD
BC5	BC28X10	10 feet	.028 ID X .071 OD
BC1	BC31X10	10 feet	.031 ID X .081 OD
	BC36X12	12 feet	.036 ID X .086 OD
BC2	BC40X12	12 feet	.040 ID X .093 OD
	BC42X12	12 feet	.042 ID X .093 OD
	BC44X12	12 feet	.044 ID X .093 OD
	BC46X12	12 feet	.046 ID X .093 OD
	BC49X11	11 feet	.049 ID X .093 OD
	BC50X11	11 feet	.050 ID X .093 OD
BC3	BC52X12	12 feet	.052 ID X .093 OD
	BC54X11	11 feet	.054 ID X .106 OD
	BC55X11	11 feet	.055 ID X .112 OD
	BC59X10	10 feet	.059 ID X .112 OD
BC4	BC64X12	12 feet	.064 ID X .125 OD
	BC70X12	12 feet	.070 ID X .125 OD
	BC75X9	9 feet	.075 ID X .125 OD
	BC80X10	10 feet	.080 ID X .145 OD
	BC85X9	9 feet	.085 ID X .145 OD
	BC90X7	7 feet	.090 ID X .145 OD

100 Foot Bulk Packs

OLD PART NO.	NEW PART NO.	LENGTH	DESCRIPTION	PRICE
	BC26X100	100 feet	.026 ID X .071 OD	
BC5-100	BC28X100	100 feet	.028 ID X .071 OD	
BC1-100	BC31X100	100 feet	.031 ID X .081 OD	
	BC36X100	100 feet	.036 ID X .086 OD	
BC2-100	BC40X100	100 feet	.040 ID X .093 OD	
	BC42X100	100 feet	.042 ID X .093 OD	
	BC44X100	100 feet	.044 ID X .093 OD	
	BC46X100	100 feet	.046 ID X .093 OD	
	BC49X100	100 feet	.049 ID X .093 OD	
	BC50X100	100 feet	.050 ID X .093 OD	
BC3-100	BC52X100	100 feet	.052 ID X .093 OD	
	BC54X100	100 feet	.054 ID X .106 OD	
	BC55X100	100 feet	.055 ID X .112 OD	
	BC59X100	100 feet	.059 ID X .112 OD	
BC4-100	BC64X100	100 feet	.064 ID X .125 OD	
	BC70X100	100 feet	.070 ID X .125 OD	
	BC75X100	100 feet	.075 ID X .125 OD	
	BC80X100	100 feet	.080 ID X .145 OD	
	BC85X100	100 feet	.085 ID X .145 OD	
	BC90X100	100 feet	.090 ID X .145 OD	



Send email to info@supco.com to request new Capillary Chart.

CTP1 Capillary Tube Cutter

- 5" stripper and cutter. Fast, efficient and all purpose



* BC1 through BC5 are all still available.

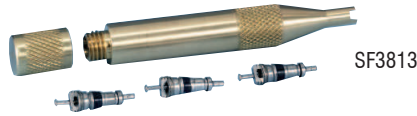
VALVES AND ACCESS FITTINGS

VALVE REPLACEMENT

PART NO.	SPECIFICATIONS
SF2235	Hex brass cap w/ seal
SF2245	Round brass cap w/ seal
SF2250	Round brass cap, seal and wrench
SF4450	Valve core w/ seal

VALVE TOOLS

PART NO.	SPECIFICATIONS
SF3813	Core Removal Tool w/ Container
SF3900	Core Removal Tool
SF3910	Core Removal Tool w/ Side Port
SF4311	"Fast Tap" Tube Piercing Pliers



SF3813

LINE & SERVICE VALVES

PART NO.	SPECIFICATIONS
SF8403	Service Valve; 3/16" Tube, 1/4" Step
SF8404	Service Valve, 1/4" Tube
SF8405	Service Valve, 5/16" Tube
SF8406	Service Valve, 3/8" Tube
SF8408	Service Valve; 1/8" Tube, 3/16", 1/4", 5/16" Step
SF8414	Line Valve, Flared, 1/4" ID, 5/16" OD
SF8438	Line Valve, Flared, 3/8" ID, 7/16" OD
SF8458	Line Valve, Flared, 5/8" ID, 11/16" OD

Adjustable Line Tap Valves

PART NO.	SPECIFICATIONS
BPV21	Bullet Piercing Valve
BPV31	Bullet Piercing Valve
BPV31D	Bullet Piercing Valve
STV2	Self Tapping Valve



PART NO.	TUBE SIZE OD
SA1	1/4", 5/16" 3/8"
SA2	1/2", 5/8"



DATA LOGGERS

SL Series Miniature Data Loggers - Monitor Temperature & Humidity Trends

- Up to 43,000 Data Points
- Software and USB Cable Included
- Hi / Low Limit Alarms
- Interval 1 sec to 18 hrs.



SL400TH

Digital Display

- Temperature and Humidity

For further information refer to Product Sheet F422

SL400T

Digital Display

- Temperature Only



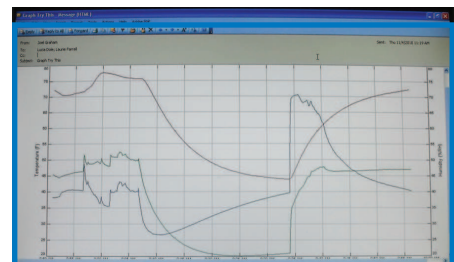
SL300TH

- Temperature and Humidity

For further information refer to Product Sheet F222

SL300T

- Temperature Only



DATA LOGGERS

SL500 Series

- LCD Real Time Graphical & Text Display
- Visual Alarms
- Software & USB Included
- Software is not compatible with any other SUPCO® data logger software



Models

PART NO.	DESCRIPTION
SL500T	View Temperature Data Logger with Display
SL500TH	View Temperature & Humidity Data Logger with Display
SL500XT	View External Temperature Data Logger with Display
SL500TC	View Thermocouple Temperature Data Logger with Display

For further information refer to Product Sheet F480



SL500T



SL500TC



SL500TH



SL500XT

DVTH

Data View Data Logger

- Graphical & Text Display
- Audible & Visual Alarms
- Software & USB Cable Included
- Temperature Range 15°F to 150°F
- Humidity Range: 0% RH to 90% RH (non-condensing)



For further information refer to Product Sheet F186



DVT4

4 Temperature Channels

- Graphical & Text Display
- Audible & Visual Alarms
- Software & USB Cable included
- 1 internal, 3 external probes
- Internal Probe: 15°F to 150°F
- External Probe: -40°F to 160°F



For further information refer to Product Sheet F434

VERSATILITY...LOGiT SERIES



LTH

LTH Temperature and Humidity Logger

- Integral Temperature, Humidity and Dew Point Measurements



LT2

LT2 Temperature Logger (Internal & External)

- One Internal and One External (solid state) Temperature Sensor



LTT

LTT Dual Temperature Logger

- 2 Independent External Temperature Measurements & Temperature Differential



LTC

LTC Thermocouple Temperature Logger

- One Internal and One External (J, K, E, T, R, S Thermocouples) Temperature Measurements



LPT

LPT1000 Pressure and Temperature Logger

- External Pressure (0 - 1000 PSI) and Temperature Measurements

LPT Pressure and Temperature Logger

- External Pressure (0 - 500 PSI) and Temperature Measurements



LCV

LCV Current and Voltage Logger

- External Current Probe and Voltage Measurements

LLSU For USB Connection



LLS For Serial Connection



For further information refer to Product Sheet F330 for LOGiT Series

CHART RECORDERS



CR87B Temperature Recorder

- Range -40°F to 120°F
- 3 Temperature Ranges
- 4 Chart Speed Selections
- 12 Speed + Temp. Ranges combined
- Bright LED Display



CRH2 Temperature/ Humidity Recorder

- Temp. Range -40°F to 130°F
- Humidity Range 0% to 90%
- 3 Temperature Ranges
- Chart Speeds from 1.5 hrs. to 31 days
- 24 Speed & Temp. Ranges combined
- 2 line LCD Display

For further information refer to Product Sheet F405



VLT4115 4 Channel Recorder, Temperature Logger, Printer & Alarm

- Large LED Display
- Internal/External Alarm
- One Year Data Logging Capability
- Data Transfers to Computer

TEMPERATURE ALARMS



TA33 Digital Display Temperature Alarm with Battery Back Up

- Temperature Range; -40°F to 160°F
- Audible and Visual Alarm
- Programmable Alarm Delay
- Programmable Setting for "Alarm on OVER" or "Alarm on UNDER"
- °F and °C Selectable
- Remote Alarm Contacts
- AC Adapter included

For further information refer to Product Sheet F423



TA22 Digital Display Temperature Alarm

- Temperature Range; -40°F to 160°F
- Audible and Visual Alarm
- Programmable Alarm Delay
- Programmable Setting for "Alarm on OVER" or "Alarm on UNDER"
- °F and °C Selectable
- Remote Alarm Contacts
- AC Adapter included

For further information refer to Product Sheet F405



THA2 Temperature & Humidity Alarm

- Temp. Range -40°F to 140°F
- Humidity Range 0% to 90%
- Displays Temp, Humidity & Dew Point
- Alarm Limits
- Audible & Visual Alarms
- Selectable 0 to 2 Hour Delay
- Relay Contacts
- Logs up to 170 Days
- Software Included

For further information refer to Product Sheet F405



ADTA Auto Dialer For Temperature Alarms

- Calls up to 4 telephone numbers
- 16 second message
- LCD display
- For use with THA2, TA6, TA2, TA22, TA44

For further information refer to Product Sheet F405



TA6 Dual Set Point, Single Zone Temperature Alarm

- Temp. Range -10°F to 80°F
- Alarm Limits for Rise & Fall
- Audible & Visual Alarms
- No Delay or 1 Hour Delay
- Relay Contacts

For further information refer to Product Sheet F405



TA7 Battery Operated, Single Zone Temperature Alarm

- Temp. Range -10°F to 80°F
- Alarm Limits for Rise Only
- Audible & Visual Alarms
- No Delay or 1 Hour Delay

For further information refer to Product Sheet F414



TA2 Single Zone Temperature Alarm

- Temp. Range -10°F to 80°F
- Alarm Limits for Rise OR Fall
- Audible & Visual Alarms
- No Delay or 1 Hour Delay
- Relay Contacts

For further information refer to Product Sheet F414

TEMPERATURE ALARMS

TA44

Single Set Point Temperature Alarm With Digital Display & Remote Wireless Alarm

- Temperature Range; -40°F to 160°F
- Audible and Visual Alarm
- Programmable Alarm Delay
- Programmable Setting for "Alarm on OVER" or "Alarm on UNDER"
- °F and °C Selectable
- Remote Alarm Contacts
- AC Adapter included
- FCC compliant Class B digital device, pursuant to part 15 of the FCC rules

TA44 INCLUDES	
TA44T	Transmitter
R10	Receiver

For further information refer to Product Sheet F478



VACUUM SENTRY

VG640 Series - Vacuum Sentry

MADE IN THE USA

Combining unmatched performance with ultimate productivity, the Vacuum Sentry guards system service activity and provides notification when pre-set alarm thresholds are reached. Choose from the VG640 with local audible and visual alarms or the VG640T which adds a remote alarm (R100) with audible, visual and vibration alarms.

Features/ Benefits

- Unmatched Resolution (as low as 0.5 micron)
- 1/2 Second Response Time (update rate)
- Backlit LCD
- Local Audible and Visual Alarm
- Auto Shut off
- Built in Hanger
- User Addressable Remote Alarm(R100) available (Operates with VG640T only)
- One Year Warranty

Applications

- While the technician is servicing another system, the VG640T can send a signal to the remote alarm (R100) up to 400 feet away.

Models

PART NO.	DESCRIPTION
VG640	Vacuum Sentry with Local Alarms
VG640T	Vacuum Sentry with Local Alarms
R100	Remote Receiver



VGC

Vacuum Gauge Coupler

Ensures leak free connection to vacuum gauge during measurement.



For further information refer to F448

VACUUM GAUGES



VG64

Digital Vacuum Gauge

- 1 micron resolution
- Fast Response Time (1/2 sec.)
- Easy Cleaning

For further information refer to Product Sheet F448



VG64S

Single Port Vacuum Gauge

- 1 micron resolution
- Fast Response Time (1/2 sec.)
- Easy Cleaning

For further information refer to Product Sheet F448



VG60

Electronic Vacuum Gauge

- 10 segment color-coded LED
- Easy Cleaning
- Soft Case Included

For further information refer to Product Sheet F135

INSTRUMENTS

EM Series

Enviro Meters measure critical HVAC/R parameters to maximize productivity and performance

EM5

Environmental Meter

- Air Velocity / Air Volume
- Temperature
- Humidity
- Sound
- Light
- Min / Max / Avg / Diff
- Data Hold
- Backlit LCD
- Auto Power Off
- Carrying Case & Tripod included

For further information refer to Product Sheet F424



EM10

Temperature & Humidity Meter

Diagnose and solve HVAC system problems

- Measures Temperature, Humidity & Dew Point
- Temperature Range: 14°F to 122°F
- Humidity Range: 0% to 99.9% RH
- Min / Max / Avg
- Data Hold
- Backlit LCD
- Auto power off
- Hard Carrying Case included



EM20

Thermo-Anemometer

Diagnose and solve air flow problems

- Measures fpm, m/s, mph, km/h, kts, Beaufort Scale
- Measures °F / °C
- Velocity Range: 80 fpm to 4000 fpm
- Temperature Range: 14°F to 122°F
- Min / Max
- Data Hold
- Backlit LCD
- Auto power off
- Hard Carrying Case included



EM30

Tachometer

Analyze and solve motor rotation problems

- Measures rpm & rps
- Range: 100 rpm to 30,000 rpm
- Min / Max
- Data Hold
- Backlit LCD
- Auto power off
- Hard Carrying Case included



EM60

Dual Differential Thermometer

Make fast inlet / outlet temperature comparisons

- Dual Thermocouple (J, K) inputs
- Temperature Range (K): -328°F to 2372°F
- Measures T1, T2 & T1-T2
- High & Low Alarms
- Data Storage
- Min/ Max / Avg for T1 & T2
- Data Hold
- Backlit LCD
- Auto power off
- Hard Carrying Case included
- Includes two (2) K-type thermocouples



EM80

Sound Level Meters

Analyze and solve excessive sound level problems

- Range: 30 dB to 120 dB
- Auto or Manual Range
- Analog Bar Indicator
- Field Calibratable
- Backlit LCD
- Auto power off
- Hard Carrying Case included



EM90

Dual Thermometer (Infra-Red & Thermocouple)

Choose the most convenient method for the application

- IR Range: -58°F to 518°F
- Thermocouple Range (K): -328°F to 2372°F
- Min / Max / Avg
- Data Hold
- Backlit LCD
- Auto power off
- Hard Carrying Case included
- Includes one (1) K-type thermocouple



For further information refer to Product Sheet F424 for all EM Environmental Meters

HLD200

Refrigerant Leak Detector

- Pump driven for fast reaction (<1 sec)
- Sensitivity: 0.1 oz / yr
- Audible tick and LED indicators
- 5 sensitivity levels



For further information refer to Product Sheet F462

PCS220

Programmable Refrigerant Charging Scale

- Solenoid activated for real-time charging
- Range: 0 – 220 lbs
- Best Resolution: 0.005 lbs / 0.1 oz
- User Programmable Alarms
- Built-in memory



For further information refer to Product Sheet F462

INSTRUMENTS

IAQ50

Wall Mounted IAQ Monitor ...for continuous monitoring

- Desktop or Wall Mounting
- Alarm Output Relay
- Power Adapter included



IAQ50 / 55 Ranges:

CO₂: 0 to 9999 ppm
 Temperature:
 14°F to 140°F
 Humidity:
 0 to 99%
 (non-condensing)

IAQ55

Handheld IAQ Monitor...for pinpointing problem areas

- Portable
- Backlit LCD
- Auto Shut-off

For further information refer to
 Product Sheet F413



DDM55

Dual Digital Manometer

- Dual Input
- Range: +/-55" H₂O
- Resolution to 0.01"
- Hoses, fitting and case included
- Backlit LCD



For further information refer to Product Sheet F181

CO1000

Carbon Monoxide Meter

- Up to 1000 ppm
- 1 ppm Resolution
- Audible Alarm
- Max and Data Hold
- Backlit LCD
- Boot and carrying case included

For further information refer to Product Sheet F311



MTM1028

Moisture Test Meter

- Pinpoint Areas Ideal for Mold Growth
- Indicates 10% To 28% Moisture Levels
- 3 Foot Coiled Cable

For further information refer to
 Product Sheet F139



DAVM+

Digital Airflow / Volume Meter

- Measures Feet per Minute (FPM) and Cubic Feet per Minute (CFM)
- Measures Temperature and Humidity
- Measures Light Levels (LUX)
- Multi-Channel Display
- Data Hold
- Carrying Case Included



For further information refer to Product Sheet F117

RPT61

Pressure / Temperature Chart Master

- Now 66 Refrigerants
- Pressure in PSI, BAR or Mpa
- Case Included

For further information refer to Product Sheet F180



DSP1000

Digital Psychrometer

- Temperature / Humidity
- Wet Bulb / Dew Point
- Dual Display
- Max and Data Hold



MFD10

Digital Capacitor Tester

- Range: 0.1 to 10,000 μF
- One hand operation



DHS55

Digital Hand Held Scale

- 55 lbs. Maximum
- Auto Shut Off



THP2

Temperature/Humidity Pen

- -4 °F to 122°F
- Humidity Range 10% to 90%



INSULATION TESTERS



M500

Electronic Insulation Resistance Tester

- Check compressor windings before they fail
- Range: 20 - 1,000 Megohms



M1000D - Digital Insulation Resistance Tester

The versatile M1000D provides user selectable test voltage ranges of 250V / 500V / 1000V to test insulation resistance and can also be used to measure AC voltage up to 750 VAC.

Features / Benefits

- User selectable resistance and voltage ranges
- Large backlit LCD [3.25" (83mm) x 2" (51mm)]
- Data hold button
- Auto power off after 15 minutes
- Low battery indicator
- 1-year warranty

Applications

- HVAC/R Compressors
- Appliances
- Motors
- Controls
- PCBs



For further information refer to
 Product Sheet F459

THERMOMETERS

Remote Dial Vapor Tension Thermometers

Various style thermometers used to monitor temperatures in a variety of HVAC/R & Appliance applications.

Features

- Stainless steel housing
- Analog dual scale dial °F or °C
- 48" capillary



PART NO.	MOUNTING	TEMPERATURE RANGE	DIAL SIZE
S6020BB	Surface back flange/ Back connection	-40°F to 60°F (-40°C to 16°C)	2"
S6020FB	Surface front flange/ Back connection		2"
S6025FB	Surface front flange/ Bottom connection		2.5"
S6020HL	Surface front flange/ Bottom connection		2"
S6025HL	Surface front flange/ Back connection		2.5"



Solar Powered LCD Thermometer

Features

- Stainless steel housing
- °F or °C selectable
- Easy to read LCD display
- Temperature update every 10 seconds

PART NO.	SSDF20
Mounting	Surface front flange / Back connection
Range	-60°F to 160°F (-51°C to 71°C)
Accuracy	+/- 2°F
Dial Size	2"
LCD Display Size	3/8"
Sensor Length	60"
Update Time	10 seconds
On/Off Switch	Yes



For further information refer to Product Sheet F493

PIT6L Dual Hand Held Thermometer (Infra-Red & Ambient) Non-contact plus ambient measurements

- 6:1 Optical Ratio
- IR Range: -4°F to 518°F
- Ambient Range: 32°F to 122°F
- Data Hold
- Backlit LCD
- Auto-Off



For further information refer to Product Sheet F312

LIT6P Dual Thermometer (Infra-Red & Probe) Non-contact plus probe measurements

- 6:1 Optical Ratio
- IR Range: -4°F to 518°F
- Probe Sensor Range: -58°F to 518°F
- Data Hold
- Auto-Off



For further information refer to Product Sheet F312

LIT11TC Laser Infrared Thermometer

- 11:1 Optical Ratio
- -76°F to 932°F
- K-Type Thermocouple
- Backlight
- Carrying Case Included



POCKET & APPLIANCE THERMOMETERS

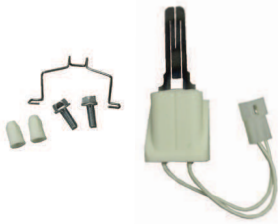
PART NO.	DESCRIPTION	TEMPERATURE RANGE
ST01	Dial Pocket Thermometer, 1" Dial	40° to 160°F
ST02	Dial Pocket Thermometer, 1" Dial	0° to 220°F
ST03	Refrigerator Thermometer	-20° to 80°F
ST04	Oven Thermometer	100° to 600°F
ST06	Refrigerator Thermometer	-40° to 80°F
ST08	Dial Pocket Thermometer, 1 5/8" Dial	-40° to 160°F
ST09	Digital Pocket Thermometer	-40° to 392°F
ST10	Digital Pocket Thermometer	-50 to 392°F



DIRECT REPLACEMENT IGNITERS

SKIT03033

Replaces Trane® KIT03033



- Steady current: 4.25 Amps @ 115 VAC.
- Max. Current: 5 Amps @ 132VAC.
- Time to Temp (1800°F): < 17 seconds

SPLT3400

Replaces Lochinvar® PLT3400



- Steady Current: 4.25 Amps @ 115 VAC.
- Max. Current: 5 Amps @ 132 VAC.
- Time to Temp (1800°F): < 17 seconds

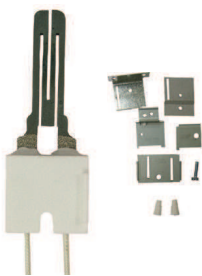
S0230K00000S

Replaces Goodman® 0230K00000S



- Steady Current: 4.25 Amps @ 115 VAC.
- Max. Current: 5 Amps @ 132 VAC.
- Time to Temp (1800°F): < 17 seconds

FLAT SILICON CARBIDE IGNITERS



IG4000 Super Kit

5 Brackets & Hardware
Replaces:
41-402, 41-403, 41-404,
41-405, 41-407, 41-408,
41-409, 41-410,
41-412, 41-414, 41-1090,
41-238, 41-242



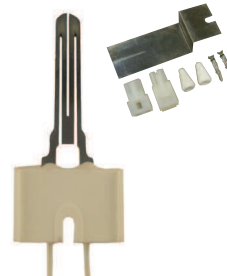
IG401

Replaces: 41-401



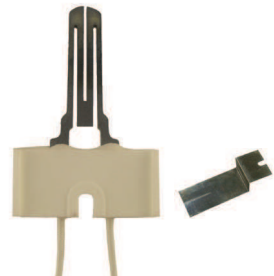
IG402K Kit

Replaces:
41-402, 41-408,
41-410, 41-411



IG403K Kit

Replaces:
41-403, 41-404,
41-407, 41-409



IG404

Replaces: 41-404



IG405

Replaces: 41-405



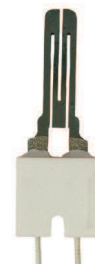
IG406

Replaces: 41-406



IG407

Replaces: 41-407



IG408

Replaces: 41-408



IG409

Replaces: 41-409



IG410

Replaces: 41-410



IG411

Replaces: 41-411



IG412

Replaces: 41-412



IG414

Replaces: 41-414



IG418

Replaces: Goodman®
B14010-18S

For further information refer to Product Sheet F174

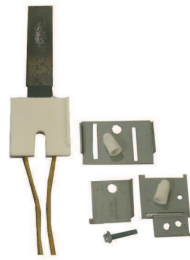
SILICON NITRIDE IGNITERS

Choose from three Universal Igniter Kits



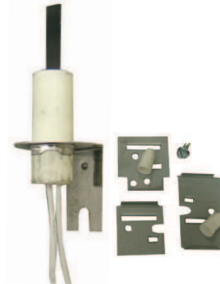
SSN2000

- Economic Design
- <17 sec Time to Temp
- Replaces over 100 OEM igniters
- >50,000 cycles
- 1 year warranty



SSN3000

- Robust Design
- <17 sec Time to Temp
- Replaces over 150 OEM igniters
- >50,000 cycles
- 2 year warranty



SSN4000

- Miniature Design
- <10 sec Time to Temp
- Replaces over 150 OEM igniters
- >200,000 cycles
- Replaces Honeywell® Glowfly® #Q3200U1004
- 3 year warranty

Or satisfy your direct needs

SSN24

- Replaces Honeywell® Q3400A1024
- Compatible with Honeywell® 1st and 2nd Generation Smart Valve
- Includes Igniter and Flame Rod



For further information refer to Igniter Cross Reference Guide F411/Product Sheet 406

ROUND SILICON CARBIDE IGNITERS

SIG100 Series

Exact Replacement Round Igniters

- Replaces Exact OEM Round Igniters

PART NO.	PART NO.
SIG100	SIG107
SIG101	SIG108
SIG102	SIG109
SIG104	
SIG106	



For further information refer to Igniter Cross Reference Guide F411/Product Sheet 406

SIG1100

Universal Igniter Kit

- Replaces all igniters that the SIG1000 does, plus over 70 more (170+)
- Includes 3 Brackets



AIR PRESSURE SWITCH KITS

Adjustable Air Pressure Sensing Switch Kits

Ideal for residential and light commercial furnace, electronic air cleaner and humidifier applications

- Adjustable Set Points
- Operating Temperature Range: -40°F to 190°F



PART NO.	PRESSURE RANGE (" W.C.)	REPLACES
RSS495011	0.25" to 1.0"	RSS-495-11
RSS498013	1.0" to 4.0"	RSS-498-13

AFS222121

Adjustable Air Pressure Sensing Switch

General purpose proving switch designed for HVAC and Energy Management applications.

- Senses positive, negative or differential air pressure
- Set Point Range: 0.05" to 12.0" W.C.
- SPDT Switch
- Replaces White Rodgers® 770-1



NS2000031

Universal Small Footprint Air Pressure Sensing Switch

Replaces hundreds of small footprint air switches!

- Includes springs and orifice restrictors
- Hardware kit included
- Set Point Range: 0.10" to 10" W.C.



For further information refer to Product Sheet F420

WALL THERMOSTATS



WALL THERMOSTATS High Quality...High Value

A Division Of SUPCO®

43055

Remote Control Digital Thermostat

- Private Control Digital Thermostat
- Filter Change Indicator
- Blue Back Light
- Remote Included

* The 43055 is the same thermostat as the 43054, but it includes a remote control



43168

5 Day/2 Day, 5-1-1 Day or 7 Day Programmable Multi Stage Heat Pump Thermostat

- Blue Back Light
- Filter Monitor
- AC powered



43054

Digital Thermostat

- Non-Programmable
- Filter Change Indicator
- Indiglo® Backlight



43665

7 Day Programmable with Wireless Remote Sensing Capability

- 7-Day Programming, 4 Programs Per Day
- Remote Sensor Sold Separately (p/n 43758)



43057

Digital Heat Pump Thermostat

- Non-Programmable
- Indiglo® Night Light
- Filter Monitor
- Adjustable Span Adjustment



43758

Wireless Remote Sensor

- Used with 43665 Thermostat



43154

5/2 or 5/1/ 1 Day Programmable Thermostat

- Pre-Programmed
- 4 Periods Per Day
- Indiglo® Backlight



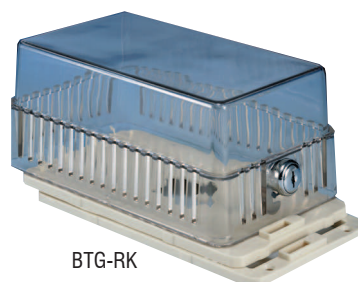
43004A/43005A Mechanical Thermostat

- Heat/Cool



THERMOSTAT GUARDS

PART NO.	DESCRIPTION
BTG-DK	Clear Plastic
BTG-K	Clear Plastic
BTG-EK	Clear Plastic
BTG-RK	Clear Plastic
BTG-UK2	Clear Plastic
BTG-UM	Metal
BTG-UWM	Metal
BTG-54VL	Metal
BTG-54VLW	Metal



BTG-RK

S106 Series Time Delay Relays

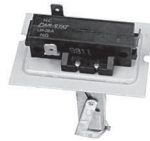
- SPST or SPDT
- Delay on/ off timing



PART NO.	A-1®		TIME DELAY ON (seconds)	TIME DELAY OFF (seconds)
	PART NO.	SWITCH ACTION		
S1061A4575C	FF582	SPST	30 to 50	60 to 90
S1061A5040C	FF583	SPST	45 to 55	30 to 50
S1061A40100C	FF584	SPST	35 to 45	80 to 110
S1061A5560C	FF585	SPST	50 to 60	45 to 75
S1061B6545C	FF586	SPDT	60 to 70	45 to 75

L59 Series Limit Controls

- SPDT Switch
- User Temperature Adjustment



PART NO.	A-1®		FAN OFF TEMP.	FIXED DIFFERENTIAL (°F)
	PART NO.	LENGTH (inches)		
L593BA	FF568	3"	120 to 250	30
L597BA	FF569	7"	120 to 250	30

FAL Series Universal Fan and Limit Controls

- Adjustable fan "OFF" setting
- Adjustable fan differential setting
- Adjustable Limit Temperature



PART NO.	A-1®		FAN OFF TEMP (°F)	FAN DIFFERENTIAL (°F)	LIMIT TEMP (°F)	LIMIT DIFFERENTIAL (°F)
	PART NO.	LENGTH (inches)				
FAL3C05TD120A	FF558	3"	90 to 120	25 to 50	150 to 250	30
FAL7C05TD120A	FF559	7"	90 to 120	25 to 50	150 to 250	30
FAL7C20BT120AB	FF594	7"	90 to 120	25 to 50	150 to 250	30

FALTS Series Fan and Limit Controls w/ Time Delay

- SPST Switch
- Adjustable Limit Temperature
- Pilot Duty: 40 VA @ 30 VAC & 120 VAC



PART NO.	A-1®		FAN OFF TEMP (°F)	LIMIT TEMP (°F)	LIMIT DIFFERENTIAL (°F)
	PART NO.	LENGTH (inches)			
FALTS57C05T120A	FF560	7"	90 to 120	150 to 250	30
FALTS57C65T120A	FF561	7" w/ shield	90 to 120	150 to 250	30
FALTS57C13BT120A	FF591	7" SPDT	90 to 120	150 to 250	30

PR Series Pilot Reigniters

- Prevents Pilot Flames From Extinguishing

PART NO	A1 PART NO	DESCRIPTION
PR24120	FF541	24/120 VAC Hardware Kit , Spark cable
PR2436W	FF543	24 VAC Hardware Kit, Spark Cable, & PR-24 Module
PR2412036W	FF536	24/120 VAC Hardware Kit, Spark Cable & Module



20

F47 & F214 Series Fan Controls

- Adjustable Temperature Dial



PART NO.	A-1®		LENGTH (inches)	FAN OFF TEMP (°F)	FAN DIFFERENTIAL (°F)
	PART NO.	WIDTH (inches)			
F473TD12025C	FF564	7/16"	3"	90 to 120	25 to 50
F477TD12025C	FF565	7/16"	7"	90 to 120	25 to 50
F21412A14025C	FF562	1-1/16"	3"	60 to 140	25 to 50
F21413A14025C	FF563	1-1/16"	7"	60 to 140	25 to 50

FA47TS Series Fan Controls w/ Time Start Fan Control

- Built in "Heat Assist" Time Delay
- Adjustable Fan OFF Temperature



PART NO.	A-1®		FAN OFF TEMP (°F)	FAN DIFFERENTIAL (°F)	TIME DELAY @ 24 VAC (sec.)
	PART NO.	LENGTH (inches)			
FA47TS3110	FF566	3"	80 to 110	60 (Fixed)	25 to 60
FA47TS7110	FF567	7"	80 to 110	60 (Fixed)	25 to 60

BC7070 (F7070) Blower Control

- Increase Heating Efficiency By Delaying The ON and OFF Cycle of the blower fan.
- Control Voltage: 24 VAC.
- Relay Contacts: SPST.
- Blower On Time: 0 – 240 Seconds Adjustable.
- Blower Off Time: 0 – 240 Seconds Adjustable



CIVA5 (FF534) Brown Out Delay Timer

- Short Cycle & Brown Out Protection For Compressors.
- Interlock Time: 5 minutes.
- Under Voltage Protection: Adjustable 16 – 22 VAC.
- Reset Time: 30 Milliseconds.



AFC01T110204 (FF535) Attic Fan Control

- Adjustable Fan OFF Temperature: 60°F to 110°F
- Firestat circuit for safety shut off
- SPST



For further information refer to Product Sheet F438

SEQUENCERS & THERMOSTATS

All Sequencers and Thermostats are:

- OEM Approved for Safety and Reliability



THERMODISC®



SUPCO®	GEM®	GLOBAL®	MARS®	WATSCO®	KLIXON®	W/R®	ROBERTSHAW®	INTERSTATE ELECTRIC® I-9	ZETTLER®	OEM
Q101	GS101 ***	24CZ-1 ***	33241 33841	TDR10 ***	6000AONI-98 ***	24A34-1 24A34-7	611-241 ***	IES24A34-1 ***	ZC24A34-1 ***	Goodman® B1290906 Lennox® 12F20 & 58C9701
Q102	GS102 ***	24CZ-2 ***	33242 33842	TDR15 ***	6000AONI-97 ***	24A34-13 24A34-2	611-242 ***	IES24A34-2 ***	ZC24A34-2 ***	York® 525-37322-000 Carrier® 40CF680020
Q103	GS103 ***	24CZ-3 ***	33244 33844	TDR20 ***	6000AONI-87 60000EO-102	24A34-3 ***	611-244 ***	IES24A34-3 ***	ZC24A34-3 ***	ICP® / Carrier® HN67QC005 ICP® / Carrier® HQ1056789
Q104	GS104 ***	24CZ-4 ***	33245 33845	TDR25 ***	60000EO49 ***	24A34-4 ***	611-245 ***	IES24A34-4 ***	ZC24A34-4 ***	Goodman® BT1256504 York® 525-37325-000 ICP® / Carrier® HN67QC006
Q105	GS105 ***	24CZ-5 ***	33232 33832	TDR30 ***	51172-32 ***	24A34-5 24A34-54	611-232 ***	IES24A34-5 ***	ZC24A34-5 ***	York® 525-37327-000 Coleman® 3120A357
Q106	GS106 ***	24CZ-6 ***	33233 33833	TDR35 ***	51172-33 ***	24A34-6 ***	611-233 ***	IES24A34-6 ***	ZC24A34-6 ***	ICP® / Carrier® HN67QC008 ICP® / Carrier® P284-1313
Q107	GS107 ***	24CZ-14 ***	33848 ***	*** ***	51172-35-1 60000CO-27	24A34-14 ***	611-007 ***	IES24A34-14 ***	ZC24A34-14 ***	York® 525-37328-000 Goodman® B13707-38 ICP® / Carrier® HN67GJ002
Q108	GS108 ***	***	***	***	***	***	***	***	***	***
Q109	***	***	***	***	***	***	***	***	***	Janitrol® BT1256500
Q110	***	***	***	***	***	***	***	***	***	Weatherking® 4223115608
Q111	***	***	***	***	***	***	***	***	***	Weatherking® 4223115606
Q112	***	***	***	***	***	***	***	***	***	Weatherking® 4223115607
Q113*	***	***	33265	***	6000E4-40	***	***	***	***	***
Q114	***	***	***	***	***	***	***	***	***	Coleman® 7670-307, 7670-308 7670-130, 7670-913, 7670-101
Q115	***	***	33246	***	6000EOM	24A52-1	***	***	**	Coleman® 3120A3771
Q116	***	***	33243	***	6000AOM	24A51-1	***	***	***	Coleman® 3110-354

* Note all sequencers have a 24 volt heater, except for the Q113 which has a 240 volt heater.

Part numbers are intended solely for identification, items offered are not represented to be manufactured by the company that built the original equipment.

SMRL130 Fire Stat

- Description: Manual reset fire stat.
- Opens @ 130° F.
- Normally open contacts; contacts close on temperature rise.
- Amps: 25 resistive @ 120 / 240V & 12.5 resistive @ 277 / 480V.
- UL® & CSA® approved.
- Replaces: Diversitech® / Wagner® # HMR130 & BTU Electric® # MRL130-50DFM.



SFPC Freeze Protection Control

- Protects air conditioning evaporator coil from freezing
- Opens 35°F / Close 50° F.
- Fits 7/8" O.D. tubing
- Replaces: Trol-A-Temp FPC
- Includes clip to fit 7/8" O.D. tubing



Adjustable AT Series

- Series covers almost 95% of heater and dryer applications
- Dial knob
- 40° adjustable range
- 1/4" quick connect terminals



Adjustable Thermostats

PART NO.	ADJUSTABLE RANGE	DIFF (°F)
AT012	135 - 175	20
AT013	175 - 215	40
AT014	210 - 250	40
AT015	250 - 290	40

Open on temperature rise. Standard mount.

Adjustable Airflow Thermostats

PART NO.	ADJUSTABLE RANGE	DIFF (°F)
AT021	90 - 130	20
AT022	140 - 180	20

Close on temperature rise. Standard mount.

THERMOSTATS

General Purpose L & LD Series

"L" Series , Single Pole - Single Throw



PART NO.	OPEN (°F)	CLOSE (°F)	DIFF (°F)
L120	120	110	10
L125	125	115	10
L130	130	115	15
L135	135	120	15
L140	140	120	20
L145	145	125	20
L150	150	130	20
L155	155	135	20
L160	160	140	20
L165	165	145	20
L170	170	150	20
L175	175	155	20
L180-20	180	160	20
L180-40	180	140	40
L190	190	150	40
L200	200	160	40
L205	205	165	40
L225	225	185	40
L240	240	200	40
L250	250	210	40
L260	260	220	40
L270	270	230	40
L290	290	250	40
L300	300	260	40
L320	320	280	40
L340	340	300	40

Limit Control* - Open on Rise



PART NO.	CUT OUT (°F)	CUT IN (°F)	DIFF (°F)
SHL120	120	110	10
SHL140	140	100	40
SHL150	150	110	40
SHL160	160	120	40
SHL170	170	130	40
SHL180	180	140	40
SHL190	190	150	40
SHL200	200	160	40
SHL210	210	130	80
SHL230	230	190	40
SHL250	250	210	40
SHL300	300	250	50

*Adapter Flange Plate included with each thermostat.

Manual Reset Limit Control* - Open on Rise



PART NO.	OPEN (°F)	CLOSE
SHM125	125	Manual
SHM130	130	Manual
SHM160	160	Manual
SHM170	170	Manual
SHM180	180	Manual
SHM200	200	Manual
SHM290	290	Manual
SHM350	350	Manual

* Adapter Flange Plate included with each thermostat.



"LD" Series, Single Pole - Double Throw



PART NO.	OPEN (°F)	CLOSE (°F)	DIFF (°F)
LD120	120	105	15
LD130	130	115	15
LD135	135	120	15
LD140	140	120	20
LD145	145	125	20
LD155	155	135	20
LD170	170	150	20
LD200	200	160	40
LD225	225	185	40
LD240	240	200	40
LD270	270	230	40
LD290	290	250	40

Fan Control* - Close on Rise



PART NO.	CUT OUT (°F)	CUT IN (°F)	DIFF (°F)
SHF90	80	90	10
SHF110	90	110	20
SHF110DC	90	110	20
SHF120	110	120	10
SHF140	120	140	20
SHF160	140	160	20
SHF170	150	170	20
SHF250	220	250	30

*Adapter Flange Plate included with each thermostat.

Manual Rollouts - SPST Limit Thermostats

• 1/4" Vertical Terminals



PART NO.	CUT OUT (°F)	CUT IN
SRL130	130	Manual
SRL135	135	Manual
SRL220	220	Manual
SRL230	230	Manual
SRL240	240	Manual
SRL250	250	Manual
SRL260	260	Manual
SRL300	300	Manual
SRL350	350	Manual

SRL Series X Ref

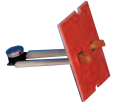
PART NO.	REPLACES OEM	OEM P/N
SRL130	Rheem®/Ruud®/Weatherking®	47-22453-01
SRL135	Rheem®/Ruud®/Weatherking®	47-22453-02
SRL220	Nordyne®	626354
SRL230	Nordyne®	626353
SRL240	Nordyne®	626355
SRL250	Nordyne®	626352
SRL260	Nordyne®	626350
SRL300	Nordyne®	626343
SRL350	Rheem®/Ruud®/Weatherking® Goodman®	47-22861-02 B13701-54

THERMOSTATS

Gas Furnace Limits and Plenum Thermostats



THERMODISC®



PART NO	DESCRIPTION	OPEN °F	CLOSE °F	DIFFERENTIAL °F	CARRIER®, BRYANT®, BDP®, DAY & NIGHT®, PAYNE®	JANITROL®, GOODMAN®, AMANA®, GMC®	AIR-EASE®, ARMSTRONG®, CONCORD®, MAGIC CHEF®,	LENNOX®, CORSAIR®, RHEEM®, RUUD®, WEATHER KING®, TRANE®	YORK®, BORG-WARNER®, FRAZIER®, JOHNSON®, LUXAIRE®
SHL501	L170-40 SPST	170°	130°	40°	HH12ZA174A HH127A176A P331-2203			47-21711-06	025-29041-007
SHL502	L180-30 SPST	180°	150°	30°	HH12ZA178A	B1370001			
SHL503	L190-40 SPST	190°	150°	40°	HH12ZA189 HH12ZB190 HH12ZA193A P331-2205			47-21711-03	025-29041-012
SHL504	L240-40 SPST	240°	200°	40°	HH12ZA240 HH12ZA252A P331-2217				
SHL505	L140-40 SPST	140°	100°	40°	HH12ZB140				
SHL506	L170-40 SPST	170°	130°	40°	HH12ZB170			SWT1258	
SHL507	L140-30 SPST	140°	110°	30°	HH12ZA140		87F16		025-29041-005
SHL508	L150-20 SPST	150°	130°	20°	HH12ZB190 HH12ZA193 HH12ZA189 P331-2005	B1370913		SWT1260	
SHL509	L240-30 SPST	240°	210°	30°	HH12ZB240 HH12ZA240 HH12ZA252 P331-2217	B1370903			
SHL510	L150-20 SPST	150°	130°	20°	HH12ZB150				
* SHL511	L160-20 SPST	160°	140°	20°	HH12ZB160				025-29041-004
SHL512	L170-20 SPST	170°	150°	20°	HH12ZB170		26H66		
* SHL513	L170-40 SPST	170°	130°	40°			37H73		
SHL514	L180-40 SPST	180°	140°	40°	HH12ZB180		49L03		025-29031-711
SHL515	L200-40 SPST	200°	160°	40°	HH12ZB200 HH12ZA199 HH12ZA201				025-29041-006
SHL516	L210-40 SPST	210°	170°	40°	HH12ZB210			SWT1263	
* SHL517	L220-50 SPST	220°	170°	50°	HH12ZB220 HH12ZA219 HH12ZA223 48NHT042 620BE			SWT1273	
SHL518	L250-40 SPST	250°	210°	40°	HH12ZB250 HH12ZA251 P331-2208	B1370012S		SWT1261 SWT1272	
SHL519	L155-30 SPST	155°	125°	30°		B1370006			
SHL520	L100-20 SPST	100°	80°	20°			47-21711-01	025-29041-002	
SHL521	L200-20 SPST	200°	180°	20°			47-21711-04		
SHL522	L160-20 SPST	160°	140°	20°		B1370908S	47-21711-07		
SHL523	L130-20 SPST	130°	110°	20°			47-21711-08		
SHL524	L170-20 SPST	170°	150°	20°			47-21711-10		
SHL525	L180-20 SPST	180°	160°	20°			47-21711-11		

* Includes gasket

Exact Replacement Commercial Refrigeration Defrost Thermostats

SL5708

- Surface Mount
- 2 wire heater limit
75°F - 40°F range
- SPST
- Resistive Amps: 25
- Volts AC: 120 / 240



Replaces: Bohn®, Larkin®, Chandler®, Climate Control® 5708L & 4752C

SL5709

- Surface Mount
- 3 wire fan and defrost terminator
55°F - 35°F range
- SPDT
- Resistive Amps: 25
- Volts AC: 120 / 240



Replaces: Bohn®, Larkin®, Chandler®, Climate Control® 5709L & 4751C

SL79002

- Tube Mount
- 3 wire defrost control
55°F - 35°F range
- SPDT
- Resistive Amps: 25
- Volts AC: 120 / 240



Replaces: Russell®103079002

SL79005

- Surface Mount
- 3 wire defrost control
45°F - 30°F range
- SPDT
- Restrictive Amps: 25
- Volts AC: 120 / 240



Replaces: Russell®103079005

THERMOSTATS

Small Flush Mount SPST Limit Thermostats (Flush Mount Automatic Rollout)



THERMODISC®

PART NO.	TERMINALS	CUT OUT (°F)	CUT IN (°F)	DIFF (°F)
SLF130VA	Vertical 1/4"	130	115	15
SLF170VA	Vertical 1/4"	170	130	40
SLF194HB	Horizontal 3/16"	194	154	40
SLF210HA	Horizontal 1/4"	210	170	40
SLF230HA	Horizontal 1/4"	230	190	40
SLF250HA	Horizontal 1/4"	250	200	50
SLF255VA	Vertical 1/4"	255	205	50
SLF260HA	Horizontal 1/4"	260	210	50
SLF275HB	Horizontal 3/16"	275	225	50
SLF330VA	Vertical 1/4"	330	280	50



Automatic Rollouts SPST Limit Thermostats

- 45°F Terminals 1/4"



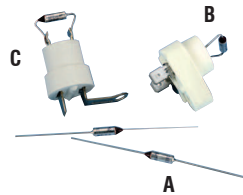
PART NO.	CUT OUT (°F)	CUT IN (°F)	DIFF (°F)
SLS120	120	105	15
SLS140	140	100	40
SLS150	150	110	40
SLS160	160	120	40
SLS170	170	130	40
SLS180	180	140	40
SLS200	200	160	40
SLS265	265	215	50
SLS275	275	225	50
SLS285	285	235	50
SLS295	295	245	50
SLS300	300	250	50



ML Series Defrost Thermostats

- Metal case with waterproof epoxy potting
- Heavy Duty Rating 10 Amps @ 120 Volts / 5 Amps @ 240 Volts
- Common Temperature Ranges
- Typically used for Residential and Commercial Applications
- Switching is SPST and can accommodate up to 1200 Watts

PART NO.	OPEN (°F)	CLOSE (°F)	DIFF (°F)	MARS®	UNILINE®
ML45	45	25	20	33008	31-001 17001
ML50	50	30	20	33009	31-002 17003
ML55	55	35	20	33010	31-003 17005
ML60	60	40	20	33011	31-004 17007
ML70	70	50	20	33012	31-005 17009
ML80	80	30	50	33020	31-006 17011



Maximum Wattage
1800W @ 120V / 2400W
@ 240

Thermal Cut Outs

PART NO.	OPEN TEMP (°C)	OPEN TEMP (°F)	STYLE
STC4228	109	228	A
STC4257	125	257	A
STC4283	139	283	A
STC4300	149	300	A
STC4333	167	333	A
STC4358	184	363	A
STC4438	226	438	A
STC4468	242	468	A
STC5257	125	257	B
STC5300	149	300	B
STC5333	167	333	B
STC5377	192	377	B
STC6257	125	257	C
STC6300	149	300	C
STC6333	167	333	C

HVAC Flush Mount Staging Thermostats

PART NO.	OPEN °F	CLOSE °F	DIFF (°F)
FL50	50	35	15
FL60	60	45	15



SAIL SWITCH

ES1024C Sail Switch

PART NO.	CAN REPLACE
ES1024C	Magic Chef®, Magic-Pak® JMPO-102-4C & Comfort Pack® & 0336a-000



VIBRATION ABSORBERS

Vibration absorbers are designed for installation in the suction and discharge lines of air conditioning, heat pump and refrigeration systems to dampen the transmission of compressor induced vibration through the system piping. Each vibration absorber is pressure tested then carefully vacuum tested using a highly sensitive helium mass spectrometer leak detection device. The absorbers are cleaned, dehydrated, sealed in plastic wrap and individually boxed after final inspection to maintain cleanliness and dryness prior to installation.



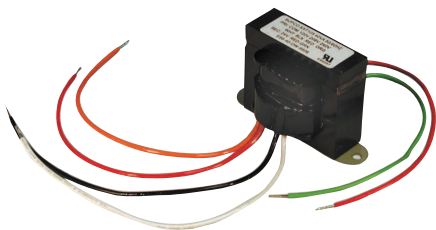
Features

- Unique proven design for high pressure applications, rated for R410A
- Compatible with all refrigerants
- Maximum working pressure: As per table listed below
- Working temperature: -40°F to 248°F (-40°C to 120°C)
- Deep pitch stainless steel flexible hose and high tensile wire braid
- Stainless steel grooved ferrules and crimped ferrules
- Design includes a piston stopper that provides a more positive seal and reduces leaks
- 100 % Helium and Hydrogen leak tested
- UL® listed file # SA13233 and CE® listed file # CE-C-0509-04-28

PART NO.	ACTUAL OD OF COPPER TUBING (INCHES)	LENGTH (INCHES)	MAXIMUM WORKING PRESSURE (PSIG)	BURST PRESSURE (PSIG)	WEIGHT (LBS.)
VAS-014	1/4	7.95	650	3250	.26
VAS-038	3/8	8.46	650	3250	.26
VAS-012	1/2	8.86	650	3250	.31
VAS-058	5/8	9.72	650	3250	.44
VAS-034	3/4	10.47	650	3250	.63
VAS-078	7/8	11.85	650	3250	.67
VAS-118	1-1/8	12.95	650	3000	.95
VAS-138	1-3/8	15.43	550	2750	1.42
VAS-158	1-5/8	16.73	510	2550	1.97
VAS-218	2-1/8	20.47	400	2000	3.04

For further information refer to Product Sheet F492

TRANSFORMERS



SXT105

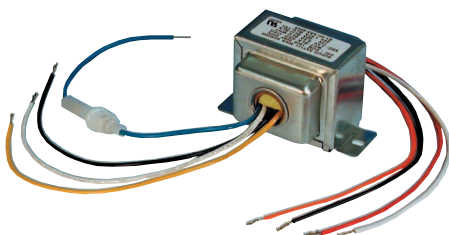
Control Transformers

A complete line of Control Transformers designed for HVAC/R applications.

- Foot or Multi-mount
- Output from 20 – 100 VA
- A multitude of Primary and Secondary combinations
- Circuit breakers and fuses where noted



For further information refer to Product Sheet F303



SXT111

Foot Mount Transformers

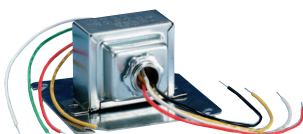
PART NO.	PRIMARY V	SECONDARY V	OUTPUT VA	BREAKER/FUSE	MOUNT TYPE
SXT100R	120/208/240/480	24	100	Breaker	Foot
SXT101	120/208/240	2.5/12/24	40	Fuse	Foot
SXT104	208/240	24	40	No	Foot
SXT105	120/208/240	24	40	No	Foot
SXT114	120/208/240	24	20	No	Foot
SXT115	120/208/240	24	40	No	Foot
SXT116	120	24	40	No	Foot
SXT79R	120/208/240/480	24	75	Breaker	Foot

* Includes Metal Shroud.

T45

Universal Transformer

- Primary 120/208/240V
- Secondary 25/8/12/16/24V
- 48 VA
- Plate, Foot or Knockout Mounting



Multi-Mount Transformers

PART NO.	PRIMARY V	SECONDARY V	OUTPUT VA	BREAKER/FUSE	MOUNT TYPE
SXT106	120/208/240	24	40	No	Multi
SXT111	120/208/240	2.5/12/24	40	Fuse	Multi
SXT113	208/240	24	40	No	Multi
SXT148	120/208/240	2.5/12/24	48	No	Multi
SXT150	120/208/240	24	50	Fuse	Multi

FAN CENTERS, DUCTS & HEATERS

FC4011 - 120 VAC Fan Center

- 24 VAC Secondary
- Rated for 40 VA
- UL® Approved
- Color coded wiring for easy installation

FC4031 - Universal Fan Center

- 120 / 208 / 240 VAC Primary
- 24 VAC Secondary
- Rated for 40 VA
- UL® Approved
- Color coded wiring for easy installation

For further information refer to Product Sheet F170



DB6

DB Series - Duct Boosters

PART NO.	DESCRIPTION	VOLTS	CFM
DB6	6 inch Duct Booster	115V	240
DB8	8 inch Duct Booster	115V	420
DB10	10 inch Duct Booster	115V	850
DB12	12 inch Duct Booster	115V	1150

For further information refer to Product Sheet F278



DH Series Duct Heater Coil Kits

PART NO.	C/W LENGTH	WATTAGE AT VOLTS	WATTAGE AT VOLTS
DH500	28"	5000@240	3750@208
DH500FC	12"	5000@240	3750@208



MADE IN THE USA

ECAP321

PVC Flue Pipe Cover



- Prevents Moisture, Dirt, Pests and Debris
- UV Resistant
- One Size Fits 1.5", 2" and 3" PVC Pipe
- OEM Approved Amana®, Bosch®, Goodman®

For further information refer to Product Sheet F495



FLASHLIGHTS

FL6N1 - 6 In 1 Flashlight

Features / Benefits / Operation

- 6 Distinct Functions
- 18 Powerful Ultra Bright White LEDs
- Red Laser Pointer
- 18 Bright White LEDs Emergency Flash
- 6 Powerful UV LEDs Reveal The Invisible
- 6 Powerful Green LEDs Maintain Night Vision.
- Directional Compass: Included in handle



For further information refer to Product Sheet F494



FLT3M - Telescope LED Flashlight

Features

- Multi-Function LED flashlight
- 3 super bright LEDs with handy On / Off button
- Powerful magnet on grip handle & light tip
- Flexible shaft for hard to reach places
- Extendable to 21" (53cm)
- 1.5" (3.81cm) round inspection mirror attachment
- Pocket clip for secure storage
- Batteries: 4 – LR44 included & installed in light tip



Warning:

Always wear ANSI® approved safety glasses when using these products

For further information refer to Product Sheet F494

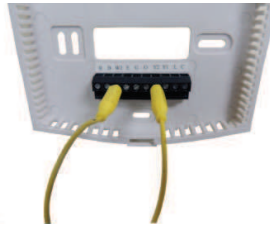


TROUBLESHOOTER

MAG1YL

Magjumper™

- 30 VAC/VDC 5 AMPS Maximum
- Ideal for low voltage troubleshooting for recessed terminals
- Thermostats
- Control boards
- Sensors
- Switches
- Alarm panels



LIL POPPER®

Control Board Circuit Breaker

- Temporary fix for control board fuses
- Stay up and running while servicing unit
- Includes quick setting thermal cutout

PART NO.	DESCRIPTION
POP3	3 Amp Breaker
POP5	5 Amp Breaker



For further information refer to Product Sheet F148

TOOLS

FBP100

Fan Blade Puller

- Sturdy, heavy duty steel
- 5/8 steel center shaft
- 4 pull fingers
- Alignment tool included
- Has flats for wrench
- Fine thread versions provides additional torque & pulling power



DA86420

4 In 1 Multi-Socket

- SAE socket sizes 1/4", 3/8", 5/16", 7/16"
- High Torque Grip
- High-quality steel construction
- Counter display of 12



SR6N1

6 In 1 Ratchet Screwdriver

- 3 Settings-forward, manual & reverse
- Bit Sizes:
 - Slotted: 3/16" (5mm) and 1/4" (6mm)
 - Phillips: #1 and #2
 - Nut Driver: 1/4" and 5/16"



(Sold in 12-pack display)

UFC1

Universal Fin Comb

- Adjustable depth
- Ergonomic handle



PART NO.	KD® NO.	DESCRIPTION
445	KD445	KD® Internal Snap Ring Plier
446	KD446	KD® External Snap Ring Plier
145	KD145	KD® Hose Pinch Off Plier
3975	KD3975	KD® Corbin Style Hose Clamp Plier
447	KD447	Replacement Tips for KD445 & KD446



145



446



445



3975

CHEMICALS

HS13001 THREADLOCKER®



All Purpose Thread Lock
Unsecured fasteners are one of the major causes of catastrophic equipment failure causing warranty issues, lack of reliability and unexpected shutdown of equipment. Broad Spectrum THREADLOCKER® is a multi-purpose locking agent providing heavy duty service with the ability to disassemble with standard hand tools.

- Prevents fastener loosening
- Provides shock and vibration resistance
- Excellent performance with dissimilar metals and material
- Oil & Chemical Resistant
- Moisture Resistant
- Helps prevent rust and corrosion
- Non-toxic
- Temperature Range of -200°F to 425°F



For further information refer to Product Sheet F429

Leak Lock® & Leak Lock® GOLD with Teflon Joint Compound

- Brushable Paste
- Joins All Metal, Plastics & Other Material
- 12/Case

Regular

PART NO.	DESCRIPTION
HS10001	1-1/3 oz Tube
HS10004	4 oz Brush Top Plastic Jar
HS10016	16 oz Brush Top Plastic Jar



Teflon

PART NO.	DESCRIPTION
HS11001	1-1/3 oz Tube
HS11004	4 oz Brush Top Plastic Jar
HS11016	16 oz Brush Top Plastic Jar



HS22008 Low Temp Gas Leak Detector

- Non-Freezing
- Fluorescent
- Non-Toxic
- 8 oz. Bottle
- 12/case



HS30004 Solderlene® Soldering Flux

- Non-Acid
- Paste Type
- Brush Top Jar
- 4 oz. Jar
- 12/case



HS16001 The Acid Test

- Fast Accurate Results
- Simple Color Indicators
- No Charts
- 4 Tests per Kit
- 12/case



HS18004 Acid Neutralizer

- Cures Acid Problems
- Compatible with ALL Lubricants
- 4 oz. Bottle
- 12/case



Thawzone® Liquid Dehydrant

- Enhanced Moisture Control
- Compatible with all refrigerants
- Helps prevent the formation of acid
- Environmentally sound

PART NO.	SIZE	REG PKG
HS17001	1 oz	24/case
HS17004	4 oz	12/case



HS16501 Oil Checker

Highside Chemicals introduces the newest chemical tool for easily identifying all refrigeration, air conditioning and heat pump lubricants in just seconds.

- Easy to use two step process that identifies all types of oils.
- Test results within seconds
- Each kit includes two complete tests.
- Compatible with Mineral, Alkylbenzene and Polyolester type oils.
- 12/case



Trace® & Trace 2® Leak Detector

- Visible Red Color
- Fluorescent w / UV Light
- 12/Case

PART NO.	DESCRIPTION
HS20004	Trace For Mineral Oil Base
HS21004	Trace 2 For Polyester Base



M098 Zoom Spout® Oiler W/ Pullout Spout

- 4 oz.
- 12/case



M044 Rust Buster® Cleaner Solvent W/ Pullout Spout

- 4 oz.
- 12/case



S8 SUPCO 88 Oil Additive

- Prevents Excess Wear on Expansion Valves and Capillaries
- Extends the Life of ALL Motors (i.e. for Blowers, Air Conditioners)
- More Efficiency for High Speed Compressors
- Compatible with all oils & refrigerants
- 8 oz.
- 12/Case



MOTOR RUN CAPACITORS



NEW
Capacitors
are highlighted
in orange



SINGLE - OVAL

370 VOLT		440 VOLT	
PART NO.	μF	PART NO.	μF
CR2X370	2	CR2X440	2
CR3X370	3	CR2.5X440	2.5
CR4X370	4	CR3X440	3
CR5X370	5	CR4X440	4
CR6X370	6	CR5X440	5
CR7.5X370	7.5	CR6X440	6
CR10X370	10	CR7.5X440	7.5
CR12.5X370	12.5	CR10X440	10
CR15X370	15	CR12.5X440	12.5
CR17.5X370	17.5	CR15X440	15
CR20X370	20	CR17.5X440	17.5
CR25X370	25	CR20X440	20
CR30X370	30	CR25X440	25
CR35X370	35	CR30X440	30
CR40X370	40	CR35X440	35
CR45X370	45	CR40X440	40
CR55X370	55	CR45X440	45
CR50X370	50	CR50X440	50
CR60X370	60	CR55X440	55
CR65X370	65	CR60X440	60
CR70X370	70	CR65X440	65
CR80X370	80	CR70X440	70
CR100X370	100	CR75X440	75
		CR80X440	80

480 VOLT

PART NO.	μF
CR25X480	25

SINGLE - ROUND

370 VOLT		440 VOLT	
PART NO.	μF	PART NO.	μF
CR2X370R	2	CR2X440R	2
CR3X370R	3	CR3X440R	3
CR4X370R	4	CR4X440R	4
CR5X370R	5	CR5X440R	5
CR6X370R	6	CR6X440R	6
CR7.5X370R	7.5	CR7.5X440R	7.5
CR10X370R	10	CR10X440R	10
CR12.5X370R	12.5	CR12.5X440R	12.5
CR15X370R	15	CR15X440R	15
CR16X370R	16	CR17.5X440R	17.5
CR17.5X370R	17.5	CR20X440R	20
CR20X370R	20	CR25X440R	25
CR25X370R	25	CR30X440R	30
CR30X370R	30	CR35X440R	35
CR35X370R	35	CR40X440R	40
CR40X370R	40	CR45X440R	45
CR45X370R	45	CR50X440R	50
CR50X370R	50	CR55X440R	55
CR55X370R	55	CR60X440R	60
CR60X370R	60	CR70X440R	70
CR65X370R	65	CR80X440R	80
CR70X370R	70	CR90X440R	90
CR80X370R	80		
CR100X370R	100		

DUAL - OVAL

440 VOLT

PART NO.	μF
CD10+5X440	10+5
CD15+4X440	15+4
CD15+5X440	15+5
CD15+10X440	15+10
CD20+5X440	20+5
CD20+15X440	20+15
CD25+5X440	25+5
CD25+7.5X440	25+7.5
CD25+10X440	25+10
CD25+15X440	25+15
CD30+4X440	30+4
CD30+5X440	30+5
CD30+7.5X440	30+7.5
CD30+10X440	30+10
CD35+3X440	35+3
CD35+4X440	35+4
CD35+5X440	35+5
CD35+7.5X440	35+7.5
CD35+8.5X440	35+8.5
CD35+10X440	35+10
CD40+3X440	40+3
CD40+5X440	40+5
CD40+7.5X440	40+7.5
CD40+10X440	40+10
CD45+5X440	45+5
CD45+7.5X440	45+7.5
CD50+5X440	50+5
CD50+7.5X440	50+7.5
CD55+5X440	55+5
CD55+10X440	55+10
CD60+5X440	60+5
CD60+7.5X440	60+7.5
CD65+7.5X440	65+7.5
CD65+10X440	65+10
CD80+5X440	80+5
CD80+7.5X440	80+7.5

DUAL - ROUND

370 VOLT

PART NO.	μF
CD25+5X370R	25+5
CD25+7.5X370R	25+7.5
CD25+10X370R	25+10
CD30+3X370R	30+3
CD30+4X370R	30+4
CD30+5X370R	30+5
CD30+7.5X370R	30+7.5
CD30+10X370R	30+10
CD30+15X370R	30+15
CD35+3X370R	35+3
CD35+4X370R	35+4
CD35+5X370R	35+5
CD35+7.5X370R	35+7.5
CD35+10X370R	35+10
CD40+3X370R	40+3
CD40+4X370R	40+4
CD40+5X370R	40+5
CD40+7.5X370R	40+7.5
CD40+10X370R	40+10
CD45+3X370R	45+3
CD45+4X370R	45+4
CD45+5X370R	45+5
CD45+7.5X370R	45+7.5
CD45+10X370R	45+10
CD50+3X370R	50+3
CD50+5X370R	50+5
CD50+7.5X370R	50+7.5
CD50+10X370R	50+10
CD55+5X370R	55+5
CD55+7.5X370R	55+7.5
CD55+10X370R	55+10
CD60+3X370R	60+3
CD60+5X370R	60+5
CD60+7.5X370R	60+7.5
CD60+10X370R	60+10
CD65+5X370R	65+5
CD70+5X370R	70+5
CD70+7.5X370R	70+7.5
CD70+10X370R	70+10
CD75+5X370R	75+5
CD75+7.5X370R	75+7.5
CD75+10X370R	75+10
CD80+5X370R	80+5
CD80+7.5X370R	80+7.5
CD80+10X370R	80+10
CD85+5X370R	85+5
CD85+7.5X370R	85+7.5
CD85+10X370R	85+10

440 VOLT

PART NO.	μF
CD10+5X440R	10+5
CD15+5X440R	15+5
CD20+5X440R	20+5
CD20+15X440R	20+15
CD25+5X440R	25+5
CD25+7.5X440R	25+7.5
CD25+10X440R	25+10
CD25+15X440R	25+15
CD30+3X440R	30+3
CD30+4X440R	30+4
CD30+5X440R	30+5
CD30+7.5X440R	30+7.5
CD30+10X440R	30+10
CD30+15X440R	30+15
CD35+3X440R	35+3
CD35+4X440R	35+4
CD35+5X440R	35+5
CD35+6X440R	35+6
CD35+7.5X440R	35+7.5
CD35+10X440R	35+10
CD40+3X440R	40+3
CD40+4X440R	40+4
CD40+5X440R	40+5
CD40+6X440R	40+6
CD40+7.5X440R	40+7.5
CD40+10X440R	40+10
CD45+3X440R	45+3
CD45+4X440R	45+4
CD45+5X440R	45+5
CD45+6X440R	45+6
CD45+7.5X440R	45+7.5
CD45+10X440R	45+10
CD50+5X440R	50+5
CD50+7.5X440R	50+7.5
CD50+10X440R	50+10
CD50+12.5X440R	50+12.5
CD55+5X440R	55+5
CD55+7.5X440R	55+7.5
CD55+10X440R	55+10
CD60+3X440R	60+3
CD60+5X440R	60+5
CD60+7.5X440R	60+7.5
CD60+10X440R	60+10
CD60+12.5X440R	60+12.5
CD60+15X440R	60+15
CD65+5X440R	65+5
CD65+10X440R	65+10
CD70+5X440R	70+5
CD70+7.5X440R	70+7.5
CD70+10X440R	70+10
CD75+5X440R	75+5
CD75+7.5X440R	75+7.5
CD75+10X440R	75+10
CD80+5X440R	80+5
CD80+7.5X440R	80+7.5
CD80+10X440R	80+10
CD85+5X440R	85+5
CD85+7.5X440R	85+7.5
CD85+10X440R	85+10

DUAL - OVAL

370 VOLT		370 VOLT		370 VOLT	
PART NO.	μF	PART NO.	μF	PART NO.	μF
CD15+3X370	15+3	CD25+15X370	25+15	CD45+3X370	40+3
CD15+4X370	15+4	CD27+5.5X370	27.5+5	CD45+5X370	45+5
CD15+5X370	15+5	CD30+3X370	30+3	CD45+7.5X370	45+7.5
CD15+10X370	15+10	CD30+4X370	30+4	CD45+10X370	45+10
CD17.5+4X370	17.5+4	CD30+5X370	30+5	CD45+15X370	45+15
CD17.5+5X370	17.5+5	CD30+7.5X370	30+7.5	CD50+5X370	50+5
CD20+3X370	20+3	CD30+10X370	30+10	CD50+7.5X370	50+7.5
CD20+4X370	20+4	CD35+3X370	35+3	CD55+5X370	55+5
CD20+5X370	20+5	CD35+4X370	35+4	CD55+7.5X370	55+7.5
CD20+10X370	20+10	CD35+5X370	35+5	CD60+5X370	60+5
CD20+15X370	20+15	CD35+7.5X370	35+7.5	CD60+7.5X370	60+7.5
CD25+3X370	25+3	CD35+10X370	35+10	CD60+10X370	60+10
CD25+4X370	25+4	CD40+3X370	40+3	CD65+5X370	65+5
CD25+5X370	25+5	CD40+4X370	40+4	CD80+5X370	80+5
CD25+7.5X370	25+7.5	CD40+5X370	40+5	CD80+7.5X370	80+7.5
CD25+8X370	25+8	CD40+7.5X370	40+7.5		
CD25+10X370	25+10	CD40+10X370	40+10		

DUAL - ROUND

440 VOLT

PART NO.	μF
CD10+10X370R	10+10
CD15+3X370R	15+3
CD15+4X370R	15+4
CD15+5X370R	15+5
CD15+10X370R	15+10
CD17.5+4X370R	17.5+4
CD17.5+5X370R	17.5+5
CD20+4X370R	20+4
CD20+5X370R	20+5
CD20+7.5X370R	20+7.5
CD20+10X370R	20+10
CD20+15X370R	20+15
CD25+3X370R	25+3
CD25+4X370R	25+4

MOTOR START CAPACITORS

PART NO.	μFD X Voltage	DIMENSIONS (DIA x H) (INCH)
CS1000-1200X110	1000-1200 MFD X 110-125V	1-13/16"x3-3/8"
CS108-130X110	108-130 MFD X 110-125V	1-7/16"x2-3/4"
CS108-130X220	108-130 MFD X 220-240V	1-13/16"x3-3/8"
CS108-130X330	108-130 MFD X 330V	2-1/16"x4-3/8"
CS124-156X110	124-156 MFD X 110-125V	1-7/16"x2-3/4"
CS124-156X165	124-156 MFD X 165V	1-7/16"x2-3/4"
CS124-156X220	124-156 MFD X 220-240V	1-13/16"x3-3/8"
CS124-156X330	124-156 MFD X 330V	2-1/16"x4-3/8"
CS130-156X110	130-156 MFD X 110V	1-7/16"x2-3/4"
CS130-156X220	130-156 MFD X 220V	1-13/16"x3-3/8"
CS130-156X330	130-156 MFD X 330V	1-13/16"x4-3/8"
CS145-175X110	145-175 MFD X 110-125V	1-7/16"x2-3/4"
CS145-175X165	145-175 MFD X 165V	1-7/16"x2-3/4"
CS145-175X220	145-175 MFD X 220-240V	1-13/16"x4-3/8"
CS145-175X330	145-175 MFD X 330V	2-9/16"x4-3/8"
CS161-193X110	161-193 MFD X 110-125V	1-7/16"x2-3/4"
CS161-193X165	161-193 MFD X 165V	1-7/16"x2-3/4"
CS161-193X220	161-193 MFD X 220-240V	1-13/16"x4-3/8"
CS161-193X330	161-193 MFD X 330V	2-9/16"x4-3/8"
CS189-227X110	189-227 MFD X 110-125V	1-7/16"x2-3/4"
CS189-227X220	189-227 MFD X 220-240V	2-1/16"x4-3/8"
CS189-227X330	189-227 MFD X 330V	2-9/16"x4-3/8"
CS200-240X110	200-240 MFD X 110-125V	1-7/16"x2-3/4"
CS21-25X110	21-25 MFD X 110-125V	1-7/16"x2-3/4"
CS21-25X220	21-25 MFD X 220-240V	1-7/16"x2-3/4"
CS21-25X330	21-25 MFD X 330V	1-7/16"x2-3/4"
CS216-227X220	216-227 MFD X 220-240V	2-1/16"x4-3/8"
CS216-259X110	216-259 MFD X 110-125V	1-7/16"x3-3/8"
CS216-259X220	216-259 MFD X 220-240V	2-1/16"x4-3/8"
CS216-259X330	216-259 MFD X 330V	2-9/16"x4-3/8"
CS233-280X110	233-288 MFD X 110V	1-7/16"x3-3/8"
CS233-280X220	233-288 MFD X 220V	2-1/16"x4-3/8"
CS233-292X110	233-292 MFD X 110-125V	1-7/16"x3-3/8"
CS233-292X165	233-292 X MFD 165V	1-13/16"x3-3/8"
CS233-292X220	233-292 MFD X 220-240V	2-1/16"x4-3/8"
CS25-30X110	25-30 MFD X 110-125V	1-7/16"x2-3/4"
CS25-30X220	25-30 MFD X 220-240V	1-7/16"x2-3/4"
CS25-30X330	25-30 MFD X 330V	1-7/16"x3-3/8"
CS270-324X110	270-324 MFD X 110-125V	1-7/16"x3-3/8"
CS270-324X165	270-324 X MFD 165V	1-13/16"x3-3/8"

PART NO.	μFD X Voltage	DIMENSIONS (DIA x H) (INCH)
CS270-324X220	270-324 MFD X 220-240V	2-1/16"x4-3/8"
CS270-324X330	270-330 MFD X 330V	2-9/16"x4-3/8"
CS280-336X220	280-336 MFD X 220V	2-1/16"x4-3/8"
CS300-360X110	300-360 MFD X 110-125V	1-13/16"x3-3/8"
CS300-360X330	300-360 MFD X 330V	2-9/16"x4-3/8"
CS30-36X110	30-36 MFD X 110-125V	1-7/16"x2-3/4"
CS30-36X220	30-36 MFD X 220-240V	1-7/16"x2-3/4"
CS30-36X330	30-36 MFD X 330V	1-13/16"x3-3/8"
CS320-384X220	320-480 MFD X 220V	2-1/16"x4-3/8"
CS324-388X110	324-388 MFD X 110-125V	1-13/16"x3-3/8"
CS324-388X330	324-388 MFD X 330V	2-9/16"x4-3/8"
CS340-408X110	340-408 MFD X 110-125V	1-13/16"x3-3/8"
CS36-43X110	36-43 MFD X 110-125V	1-7/16"x2-3/4"
CS36-43X220	36-43 MFD X 220-240V	1-7/16"x2-3/4"
CS36-43X330	36-43 MFD X 330V	1-7/16"x3-3/8"
CS378-440X110	378-440 MFD X 110-125V	1-13/16"x3-3/8"
CS400-480X110	400-480 MFD X 110-125V	1-13/16"x3-3/8"
CS400-480X220	400-480 MFD X 220V	2-1/16"x4-3/8"
CS430-516X110	430-516 MFD X 110V	1-13/16"x3-3/8"
CS43-56X110	43-56 MFD X 110-125V	1-7/16"x2-3/4"
CS43-56X220	43-56 MFD X 220-240V	1-7/16"x2-3/4"
CS43-56X330	43-56 MFD X 330V	1-13/16"x3-3/8"
CS460-552X110	460-552 MFD X 110-125V	1-13/16"x3-3/8"
CS53-70X330	53-70 MFD X 330V	1-13/16"x3-3/8"
CS540-648X110	540-648 MFD X 110-125V	1-13/16"x3-3/8"
CS56-72X110	56-72 MFD X 110-125V	1-7/16"x2-3/4"
CS56-72X220	56-72 MFD X 220-240V	1-7/16"x3-3/8"
CS56-72X330	56-72 MFD X 330V	1-13/16"x3-3/8"
CS590-708X110	590-708 MFD X 110-125V	1-13/16"x3-3/8"
CS64-77X110	64-77 MFD X 110-125V	1-7/16"x2-3/4"
CS64-77X220	64-77 MFD X 220-240V	1-7/16"x2-3/4"
CS64-77X330	64-77 MFD X 330V	1-13/16"x3-3/8"
CS708-850X110	708-850 MFD X 110-125V	1-13/16"x3-3/8"
CS72-88X110	72-88 MFD X 110-125V	1-7/16"x2-3/4"
CS72-88X220	72-88 MFD X 220-240V	1-7/16"x2-3/4"
CS72-88X330	72-88 MFD X 330V	2-1/16"x3-3/8"
CS829-995X110	829-995 MFD X 110-125V	1-13/16"x3-3/8"
CS88-108X110	88-108 MFD X 110-125V	1-7/16"x2-3/4"
CS88-108X220	88-108 MFD X 220-240V	1-13/16"x3-3/8"
CS88-108X330	88-108 MFD X 330V	2-1/16"x3-3/8"



MOTORS

Universal Condenser Fan Motors

PART NO.	WATTS	ROTATION	APPLICATIONS
SM0740	2.3	CWLE	
SM5109	2	CWLE	
SM5113	2.5	CWLE	Heavy Duty Universal
SM5211	4	CWLE	Light Commercial, Display Coolers
SM5311	6	CWLE	Restaurant Units
SM5411	9	CWLE	Beer / Soda Coolers



MB55 Motor Mount Bracket

• Kit is used with 5" and 5.5" motors.



See page 34 for additional motor information

SM999 Universal Evaporator Fan Kit Motor



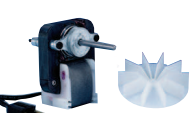
SM670 / SM680 Series Utility Motor Kits



SM6700B Motor Kit



SM550 Series Ventilator Motors



DRIERS

LLD Series Liquid Line Filter Driers



PART NO.

LLD032
LLD032S
LLD052
LLD052S
LLD053
LLD053S
LLD082
LLD082S
LLD083
LLD083S
LLD084
LLD084S
LLD163
LLD163S
LLD164
LLD164S
LLD165
LLD165S
LLD304
LLD304S
LLD305S
LLD306S
LLD307S

SSLD Series Suction Line Driers



PART NO.

SSLD83S
SSLD84S
SSLD85
SSLD85S
SSLD165S
SSLD166
SSLD166S
SSLD167S
SSLD306S
SSLD307S

SUD Series Copper Driers



PART NO.

SUD103
SUD109
SUD110
SUD111
SUD112
SUD113
SUD114
SUD115
SUD116

SSG Series Moisture Indicators



PART NO.

SSGSS2
SSGSS3
SSGSS4
SSGSS5
SSGSS7
SSGFM2
SSGFM3

CSLD Series Compact Suction Line Driers



PART NO.

CSLD14S4
CSLD14S6
CSLD14S7
CSLD14S9

HP Series Bi-Directional



PART NO.

HP083S
HP163S
HP165

SUD8358 - Standard beaded drier with UV dye and magnetic filter.

Compatible with all refrigerants and oils, these driers reduce the microscopic steel particles flowing through the system. Traces leaks with UV dye and can replace all brands of spun copper driers.

SUD8288 - Solid core cleanout drier with UV dye and a magnetic filter.

The SUD8288 is a solid core cleanout drier with UV dye and a magnetic filter. SUD8288 is a direct replacement for the Electrolux® 5303918288 and all other copper dryers.

UVL200 - UV Leak Detection Light & Glasses

- 9 LED bulbs for high intensity
- Impact resistant glasses



For further information refer to Product Sheet F462



For further information refer to Product Sheet F481



CONTACTORS

SUPCO contactors are designed for use in HVAC&R systems. These contactors are available in 1.5, 2 and 3 pole configurations from 20 through 90 full amps. Compact universal design allows replacement of the most common brands.



For further information refer to Product Sheet F155

Features

- Silver Cadmium Oxide Contacts
- Ranges: 20 – 90 FLA
- Poles: 1.5, 2 & 3
- Coil Voltages: 24, 120 & 240 VAC
- Terminations: #10-32 screw – 20, 25 & 30 FLA Models, Box Lug – 40, 50, 60, 75 & 90 FLA Models
- Temperature Range: - 40°F to +150°F - 40°C to +65°C
- UL® & CSA® Approved



SMC11 - 2 Pole Magnetic Line Contactor

Features

- Non-positional
- Replaces MARS® 18001 (exact), Honeywell® R850B1146, and Packard® C18001
- Includes 4 terminals and 4 screws
- UL® File Number E328772



For further information refer to Product Sheet F432

Specifications

Contacts	DPST	Locked Rotor Amps	120 Amps
Coil Voltage	24 VAC	Resistive Load Amps	30 Amps
Full Load Amps	30 Amps	Frequency	50/60 Hz

1.5 Pole

PART NO.	FULL LOAD AMPS	COIL VOLTAGE
DP25241	25	24
DP251201	25	120
DP252401	25	240
DP30241	30	24
DP301201	30	120
DP302401	30	240

2 Pole

PART NO.	FULL LOAD AMPS	COIL VOLTAGE
DP20242	20	24
DP201202	20	120
DP202402	20	240
DP25242	25	24
DP251202	25	120
DP252402	25	240
DP30242	30	24
DP301202	30	120
DP302402	30	240
DP40242	40	24
DP401202	40	120
DP402402	40	240

3 Pole

PART NO.	FULL LOAD AMPS	COIL VOLTAGE
DP25243	25	24
DP251203	25	120
DP252403	25	240
DP30243	30	24
DP301203	30	120
DP302403	30	240
DP40243	40	24
DP401203	40	120
DP402403	40	240
DP50243	50	24
DP501203	50	120
DP502403	50	240
DP60243	60	24
DP601203	60	120
DP602403	60	240
DP75243	75	24
DP751203	75	120
DP752403	75	240
DP90243	90	24
DP901203	90	120
DP902403	90	240



APPLIANCE NEW PRODUCTS

MAGNETIC & UV FILTER DRIERS

SUD8358 - Standard beaded drier with UV dye and magnetic filter.

Compatible with all refrigerants and oils, these driers reduce the microscopic steel particles flowing through the system. Traces leaks with UV dye and can replace all brands of spun copper driers.

- 100% XH-9 beaded desiccant, compatible with all refrigerants and oils
- Hermetically sealed, directional flow drier with access valve
- 100% Spun copper shell and end tubes, pre-scored ends for easy break off.
- 100 micron filter sieve
- Magnetic reduction filter – reduces microscopic steel, iron, and stainless steel particles as the refrigerant flows through the system. These metal particles erode and destroy the component parts in the system.
- Reduces clogged capillary tubes. Reduces wear and tear on component parts.
- Adds U.V. dye to the system automatically. Just braze the drier in as usual the SUD8358 adds the dye as the refrigerant circulates. Compatible with all refrigerants and oils.
- Use on capillary or expansion valve systems.
- Use on any OEM system up to ¾ HP. Rated to 1 ton on R-22 systems.



For further information refer to Product Sheet F481

Can Replace:

- Electrolux® 5303918358, 530335677
- GE® WR86X10005, WR86X93
- Haier® RF-2800-11
- LG® & Kenmore® 5851JA2003B, 5851JA2006G, 5851JA2008B, 5851JJ2002B
- Samsung® & Kenmore® DA73-30102E, DA73-30102B, DA73-30102F
- Sub-Zero® 3014230, 7006964
- Viking® PM010616
- Whirlpool®, Maytag®, & Kenmore® W10143759, 4387019, 13900-1

SUD8288 - Solid core cleanout drier with UV dye and a magnetic filter.

The SUD8288 is a solid core cleanout drier with UV dye and a magnetic filter. SUD8288 is a direct replacement for the Electrolux® 5303918288 and all other copper dryers. This multistage solid core cleanout drier adds a U.V. dye, processes the refrigerant and oils through a magnetic filter to remove microscopic metal particles from the system. Compatible with all new and existing refrigerants and oils, all copper and brass body resists corrosion. Reduce plugged cap tubes, ideal for use in residential and light commercial systems.



UVL200 - UV Leak Detection Light & Glasses

- 9 LED bulbs for high intensity
- Impact resistant glasses



For further information refer to Product Sheet F462

CONDENSER FAN MOTORS

SM5109 Universal Condenser Fan Motor

- Direct replacement for the Whirlpool® 833697 condenser fan motor.

NEW

PART NO.	WATTS	ROTATION	REPLACEMENT FOR
SM0740	2.3	CWLE	Sub Zero® 4200740
SM5109	2	CWLE	Whirlpool® 833697
SM5113	2.5	CWLE	Heavy Duty Universal
SM5211	4	CWLE	Light Commercial, Display Coolers
SM5311	6	CWLE	Restaurant Units
SM5411	9	CWLE	Beer / Soda Coolers



SM10185

Evaporator Motor

Replaces: WR60X10185

RECEPTACLE KIT

RR123 Hi-Temp Ceramic Receptacle Kit

PART NO.	CAN REPLACE
RR123	Maytag® 12001676 Magic Chef® 1430306K



REFRIGERATION HARD STARTS

URCO 3'N 1 Series is pre-wired to work in systems with or without a Run Capacitor

- Pre-wired to work in systems with or without a run capacitor
- Provides High Torque Start
- Reduces Truck Stock- this is the only one you need!
- 1/4" push-on terminals for run capacitor
- 90° Fusite connector for compressor
- Includes wiring diagram
- Includes wire nuts



PART NO.	DESCRIPTION
URCO810	Ultimate Relay, Start Capacitor and Overload; 1/12 - 1/5 hp
URCO410	Ultimate Relay, Start Capacitor and Overload; 1/4 - 1/3 hp
URCO210	Ultimate Relay, Start Capacitor and Overload; 1/3 - 1/2 hp
UR081	Ultimate Relay and Overload; 1/12 - 1/5 hp
UR041	Ultimate Relay and Overload; 1/4 - 1/3 hp



Our NEW 4'N 1 URCO Series offers the most complete solution!

- The Same Benefits as the Ultimate URCO Series
- Closely Matched System Run Capacitor included



PART NO.	DESCRIPTION
URCO810RC	Ultimate Relay, Start Capacitor, Overload and 12.5 μ F Run Capacitor; 1/12 - 1/5 hp
URCO410RC	Ultimate Relay, Start Capacitor, Overload and 15 μ F Run Capacitor; 1/4 - 1/3 hp
URCO210RC	Ultimate Relay, Start Capacitor, Overload and 20 μ F Run Capacitor; 1/3 - 1/2 hp



RCO 3'N 1 Series Refrigeration Hard Starts...For Refrigeration Systems without a Run Capacitor

- Reliable, field proven technology
- Pre-wired for easy installation

PART NO.	DESCRIPTION
RCO810	Relay, Start Capacitor and Overload; 1/12 - 1/5 hp
RCO410	Relay, Start Capacitor and Overload; 1/4 - 1/3 hp
RCO210	Relay, Start Capacitor and Overload; 1/3 - 1/2 hp
SS410	Potential Relay Relay, Start Capacitor and Overload; 1/4 - 1/3 hp



RO & PRO Series Relay & Overload Combinations

- RO Series features "snap-on" bracket
- PRO Series installs on "pin-type" terminal.
- Locked rotor protection eliminates start winding overheating.
- Can be used with and without start capacitor motors from 1/12 to 1/3 hp.



PART NO.	MOUNTING	HP RATING	VOLTAGE (VAC)
RO41	Quick Connect	1/4-1/3	115
RO81	Quick Connect	1/12-1/5	115
PRO41	Push-On	1/4-1/3	115
PRO81	Push-On	1/12-1/5	115



IC Series

IC100

- 120 volt PTC relay replaces current relays and solid state relays from 1/20 to 1/3 HP. Can be used in any position. Used on over 10,000 models.



IC102

- 120 volt PTC relay replaces current relays and solid state relays from 1/20 to 1/3 HP. Can be used in any position. Used on over 10,000 models. Can be used with or without a run capacitor.



OLK7913

- 1/4 to 1/3 HP relay and overload kit. Can replace 4387913 kit, 819099, 4387836, 4357207, 2154759 as a direct replacement on 2400 Whirlpool® models and as a universal replacement on over 10,000 models as a universal relay overload kit. Instructions included. Can be used with or without run capacitor. 120 volt applications.



OLK7535 - Relay & Overload Kit

- Can replace 4387535 kit, 819160, 4387767, 4357210, 2154760, 1421039 as a direct replacement on 2300 Whirlpool®, Roper®, Estate®, KitchenAid®, Maytag®, Magic Chef® models and as a universal replacement relay overload. Instruction included. Can be used with or without run capacitor. 120 volt applications.



MOTORS

SM5109 Universal Condenser Fan Motor

- Direct replacement for the Whirlpool® 833697 condenser fan motor.

PART NO.	WATTS	ROTATION	REPLACEMENT FOR
SM0740	2.3	CWLE	Sub Zero® 4200740
SM5109	2	CWLE	Whirlpool® 833697
SM5113	2.5	CWLE	Heavy Duty Universal
SM5211	4	CWLE	Light Commercial, Display Coolers
SM5311	6	CWLE	Restaurant Units
SM5411	9	CWLE	Beer / Soda Coolers



SM670 / SM680 Series Utility Motor Kits



PART NO.	TYPE	VOLTS AC	RPM	CURRENT (AMPS)	SHAFT DIMENSIONS	STACK SIZE	ROTATION (REVERSIBLE)
SM670	Sleeve	120	3000	0.55	3/16" X 1-1/4"	5/8"	CW/CCW
SM671	Sleeve	120	3000	0.55	3/16" X 1-1/4"	5/8"	CW/CCW
SM672	Sleeve	240	3000	0.32	3/16" X 1-1/4"	5/8"	CW/CCW
SM673	Sleeve	120	3000/1550	.55/.34	3/16" X 1-1/4"	5/8"	CW/CCW
SM675	Sleeve	120/240	3000	1.0/.50	3/16" X 2-3/8"	1"	CW/CCW
SM680	Sleeve	120	3000	0.9	3/16" X 1-1/2"	1-1/8"	CW/CCW
SM685	Sleeve	120	3000/1550	.82/.21	3/16" X 1-3/4"	7/8"	CW
SM690C	Sleeve	120	3000	0.4	3/16" X 1-1/2"	5/8"	CW

MB55 Motor Mount Bracket



- Kit is used with 5" and 5.5" motors.

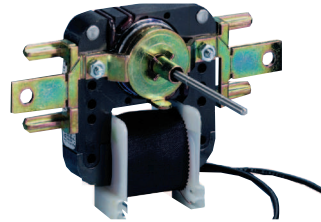
SM6700B Motor Kit

- Replaces Acme Miami® 700
- 120V / 3000rpm
- 3/16" X 1-1/4" Shaft
- 5/8" Stack



SM999 Universal Evaporator Fan Kit Motor

- 120 VAC
- 3000 RPM
- .31 Amp Reading



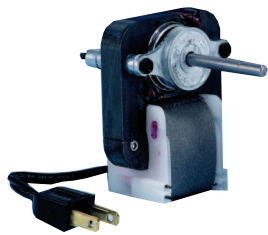
SM0740 Sub-Zero® Condenser Fan Motor

- Direct replacement for 4200740



SM550 Series Ventilator Motors

- Exact Replacement for Nutone® Range Hood Ventilators
- C Frame Design
- SM550 Motor includes FB460 Impeller
- Range Hoods
- Bathroom Exhaust Fans



PART NO.	SPEED	RPM	SHAFT			LEAD	NUTONE® ROBERTSHAW®	
			DIMENSIONS	ROTATION	STACK		NO.	NO.
SM550	1	3000	7/32" X 1 3/4"	CCW	1/2"	120 V Plug	C65878	33-100
SM551	2	High 3000 Low 1640	7/32" X 1 7/16"	CW	7/8"	2 Speed Plug	C52367	33-101
SM552	1	3000	7/32" X 1 1/4"	CCW	3/4"	120 V Plug	C63675	33-103
SM553	1	3000	7/32" X 1 3/4"	CCW	3/4"	Eyelet	C66582	33-104
SM554	2	High 3300 Low 3200	7/32" X 1 7/16"	CCW	7/8"	2 Speed Plug	C27987	33-105
SM555	1	3000	7/32" X 2 3/8"	CCW	5/8"	120 V Plug	C68627	33-106
SM556	1	3000	7/32" X 1 7/8"	CCW	5/8"	120 V Plug	C34484	N/A

MOTORS

SM9703

Evaporator Fan Motor

Can Replace: Whirlpool® W10189703
Used to replace 20 part numbers on 2000 models.

SM2744

Evaporator Fan Motor

Can Replace: Maytag® 12002744
Used on over 100 models.



SM10257

Evaporator Fan Motor

Can Replace: GE® WR60X10257
Used on over 100 models.

SM10185

Evaporator Fan Motor

Can Replace: GE® WR60X10185
Replaces 21 part numbers.
Used on over 100 models.

SM10074

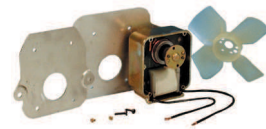
Evaporator Fan Motor

Can Replace: GE® WR60X10074
Used on over 650 models.

Exact Replacement Evaporator Motors

PART NO.	REPLACES
SM327	Whirlpool® 482468, Original Howard®
SM329	Whirlpool® 4318001, Original Howard®
SM335	Maytag® 56488-2
SM336	Electrolux® 5300158289
SM338	GE® WR60X162

PART NO.	REPLACES
SM343	Whirlpool® 482731
SM344	GE® WR60X190
SM345	Whirlpool® 4389142
SM399	Whirlpool® 4389144
SM8549	Electrolux® 5303918549



VALVES & FITTINGS

Adjustable Line Tap Valves



MADE IN THE USA

PART NO.	O.D. TUBING SIZE	PACKAGING
BPV31	1/4", 5/16", 3/8"	12/Box
BPV31D	1/4", 5/16", 3/8"	48/Box
BPV21	1/2", 5/8"	8/Box
BPV36	3/16"	12/Box
BPV14	1/4"	12/Box
BPV56	5/16"	12/Box
BPV38	3/8"	12/Box
BPV12	1/2"	8/Box
BPV58	5/8"	8/Box



PART NO.	TUBE SIZE OD
SA1	1/4", 5/16" 3/8"
SA2	1/2", 5/8"

APPLIANCE BOOK STORE

PART NO.	DESCRIPTION
EBHR	Refrigeration Repair Manual
EBOC	Oven & Cooktop Repair Manual
EBDW	Dishwasher Repair Manual
EBGW	GE® Washer Repair Manual
EBMW	Maytag® Washer Repair Manual
EBHD	Dryer Repair Manual
EBWD	Whirlpool® Dryer Repair Manual
EBWM	Washer Repair Manual
EBWW	Whirlpool® Washer Repair Manual



WG1 Water Guard Economical Water Alarm



Water Guard has an instant audible alarm (90db) to alert you to any water leaks. Excellent for use under sinks, near washers, dishwashers, refrigerators, water heaters, and sump pumps.

SURGE ARRESTOR

APP120

Helps protect refrigerators, window air conditioners, dehumidifiers and other appliances from damage due to power interruptions. (Brown-outs)

Minimum Starting Volts	90 VAC single phase
Operating Volts	120 VAC single phase
Maximum Switching	1.0 HP @ 120 VAC (12,000 BTU)
Time Delay	4 minutes +/- 1 minute



ICEMAKER REPLACEMENT KITS

SUPCO Icemaker Replacement Kits are designed to meet or exceed OEM specifications. Choose from Universal Kits or Direct Replacement Kits.

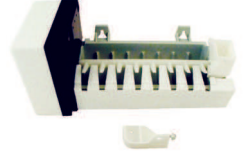
RIM961 Whirlpool® Icemaker

5 cube modular icemaker is designed to replace Whirlpool®, Kenmore®, Maytag®, in over 600 different models. The RIM961 replaces part numbers: W10190961, W10122503, 2212353, & 2212352. Instructions for use in LED models included.



SZ4200520 Sub-Zero® Icemaker

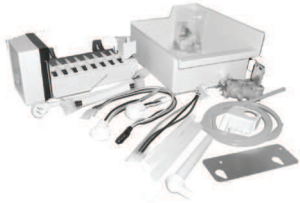
8 cube icemaker is designed to replace the Sub-Zero® 4200420 using the existing wiring harness. Instructions included. Used on Sub Zero® models: 501F, 522, 532, 542, 561, 590, 221M, 201FD, 201RIM, 245, 249FF, 211, 241, 251, 2411, 2511, 361, 3211, 801, 700TCI, & 700TFI



Universal Replacement

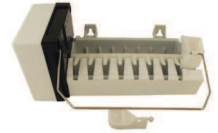
RIM2000 Universal Icemaker Service Kit for many Major Brands

- Direct Replacement Plug-in or New Icemaker for pre-wired refrigerators



RIM900 Universal Modular Icemaker

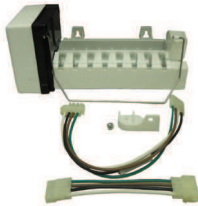
- Bare icemaker service kit. Use existing wire harness. Replaces D7824760Q and most modular kits.



Direct Replacement

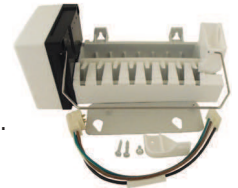
RIM277 Electrolux® Icemaker Service

- Replaces 5303918277



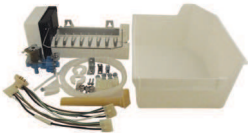
RIM300 GE® Icemaker Service Kit

- Replaces IM-1 thru IM-3 Series and UKKIT Series
- Excellent service kit for over 75 GE® part numbers.



RIM313 Whirlpool® Icemaker Installation Kit

- Replaces 1129313 & ECKMF-64



RIM316 Whirlpool® Icemaker Installation Kit

- Replaces 1129316 & ECKMF-90



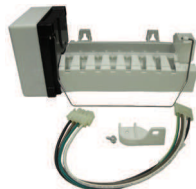
RIM469 Whirlpool® Icemaker Installation Kit

- Replaces 2155469A & ECKMF-94



RIM501 Amana® / Maytag® Icemaker Service Kit

- Replaces 1110702A, D7824706Q



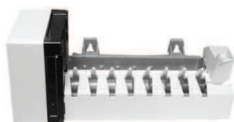
RIM500 Whirlpool® Icemaker Installation Kit

- Replaces 978556 & Mechanical & 4317943 Modular style



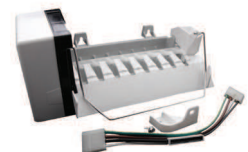
RIM943 Replacement Icemaker Kit:

- Replaces Whirlpool® 4317943
- Replaces Maytag® IC4Q
- Replaces Sub-Zero® 4201760



RIM597

- Replaces Whirlpool® 2198597
- Instructions for use in LED models included



ICEMAKER REPLACEMENT PARTS & ACCESSORIES



IMM8366

Icemaker Modular Head

- Replaces Whirlpool® 628366, 628519
- Also used in other major brands

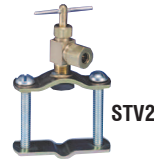


IMM1515

Icemaker Modular Head

- Replacement Modular Head Kit for Whirlpool® 8201515

ICEMAKER & HUMIDIFIER INSTALLATION KITS



PART NO.	DESCRIPTION	TUBING	VALVE	VALVE TYPE	CONNECTION AT TAP	CONNECTION AT APPLIANCE
STV2	Self Tapping Water Valve		STV2	Self Tapping		
PT25	Valve, 25 foot plastic tubing and all fittings	Plastic	STV2	Self Tapping	1/4" compression	1/4" compression
PT25E	Valve, 25 foot plastic tubing and 2 most popular fittings	Plastic	STV2	Self Tapping	1/4" compression	1/4" compression
C15	Valve, 15 foot 1/4" O.D. copper tubing and all fittings	Copper	STV2	Self Tapping	1/4" compression	1/4" compression
C25	Valve, 25 foot 1/4" O.D. copper tubing and all fittings	Copper	STV2	Self Tapping	1/4" compression	1/4" compression
C15F	Valve, 15 foot 1/4" O.D. copper tubing and all fittings	Copper	STV2	Self Tapping	1/4" compression	1/4" Flare

VI2404

3/4" Brass Valve Adapter Icemaker/Humidifier

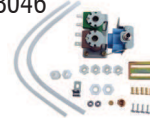
- 90° construction to relieve stress on tubing
- 3/4" MHT to 1/4" Compression
- Washer included
- Many icemaker valves require a 3/4" MHT connector
- All brass - won't rust



WV8046

Water Valve

- Replaces: WPL 4318046
- Universal hardware kit included



VI3460

Dishwasher Right Angle Fitting

- Replacement for Whirlpool® W10273460



WV8047

Water Valve

- Replaces: WPL 4318047
- Universal hardware kit included



WATER FILTERS



Aqua Fresh Universal and Direct Replacement Water Filters and Filter Cartridges are designed to meet or exceed the OEM filters that they replace. SUPCO's Aqua Fresh filters are not affiliated, endorsed or sponsored by the referenced OEMs. Each Aqua Fresh filter is 100% pressure tested and uses advanced carbon block technology to provide the very best water filtration.

Direct Replacement

WF283 for use with Whirlpool®

Replaces Part Numbers:



AEG® DD7098	General Electric® AP717	Samsung® DA29-10105C
Amana® R0183114	WR97X180	DA29-10105E
Daewoo® DD7098	WR97X214	DA29-10105J
Electrolux® 25004006	LG® 5231JA2003B	EF9603
25004018	5231JA2012A	Thermador® DD7098
25004022	Maytag®	Whirlpool®
25004082	18001001	4210359
5303310266	18001009	4210508
5303917335	18001010	4210573
S5303310266		4378411
		4378442
		4392949R

WF285 for use with Whirlpool®

Replaces Part Numbers:



Brita® WPRF-100	Whirlpool® 821491, 2186444, 2200203, 2203220, 22033980, 2255518, 2255520, 2305766, 2305767, 2305768, 4392857, 4392857R, 4392922, 4396501, 4396508, 4396508P, 4396510, 4396510P, 4396562, 4396563, 4396918, WF-L400, WFL400, L400, WF-L400V, WFL400V, L400, WF-L500, WFL500, L500, WF-300BR, (Filter system that uses 4396508)
Kenmore® / Sears® 46-9010, 46-9908, 46- 9902, 9010P, 9908, 9908P, 9902, 9902P, 0460901000, 04609902000, 04609908000	
KitchenAid® 4396547, 4396548, 4396163, 4396164, 4396509, 4396509P, 4396918, 2203221, 2255709, Thermador® 491849	

WF286 for use with Whirlpool®

Replaces Part Numbers:



Whirlpool®
8171413, 8171413R
8171414, 8171414R
2213384, WFI-NLC200
NLC200, WFI-NLCS200
NLCS200
KitchenAid®
8171787, 8171788,
2204236, 2206039,
2213384
Kenmore®/Sears®
9002, 469002,
46-9002, 9002P,
04609002000

WF288 for use with Maytag®

Replaces Part Numbers:



Maytag®
UKF7003AXX, UKF7003AXXP,
UKF7003, UKF7002AXX,
UKF7002, 7002, UKF7001AXX,
UKF7001, 7001, UKF6001AXX,
UKF6001, 6001, UKF5001AXX,
UKF5001, 5001
The WF288 is designed
to last 25% longer than
the OEM version.

WF289 for use with Samsung®

Replaces Part Numbers:



Samsung®
TADA29-00003B
TADA29-00003A
DA29-00003A
DA29-00003B
DA29-00003D
DA29-00003A-B
DA2900003A
DA29-00003
Used on models:
DA61-00159,
DA61-00159A,
DA61-00159A-B
**Whirlpool®/
Maytag®**
W10132126

WF290 for use with LG®

Replaces Part Numbers:



ATAG® 88009234	Sears®/Kenmore® 5231JA2002A
CUNO® LT500P	LG® Models:
LG®/Zenith® 5231JA2002A	LRSC21935**, LRSPC2031**, LRSPC2041**, LRSPC2051**, LRSPC2331**, LRSPC2341**, LRSPC2661**, LRSC26905**
5231JA2002B	** indicates all models in that series.
CNZ5231JA2002A	
LT500P	
5231JA2002A-S, T2004CNZ1648-0019 1648-0019	

WF293 for use with Whirlpool®

Replaces Part Number:



Whirlpool®
4396701, 4396702
2301705, W10281560

WATER FILTERS



WF294 for use with Samsung®

- Universal and direct replacement water filters

Replaces Part Numbers:

DA29-00020B
DA29-00020A
HAF-CIN

Used on models:

REFSVC	RF4267 series
RF4287 series	RF4289 series
RF4293 series	RF4296 series
RF4297 series	RF4298 series
RF4299 series	RS261 series
RS263 series	RS265 series
RS267 series	



Universal Inline

WF270 / WF271



WF270



WF271



Part No.	Filter Media	Filtration Dimensions	Capacity Gallons	Ice Capacity Pounds	Max. Flow Gals./Min.	Length	Diameter	Compression Fitting	Taste / Odor	Scale / Lime	Min PSI	Max PSI	Max Temp
WF270	Carbon	20 microns	1,000	8,000	1	6 3/8"	1 5/8"	1/4"	Yes	No	20	125	100°F
WF271	Carbon	20 microns	4,000	32,000	1	10"	2 1/4"	1/4"	Yes	No	20	125	100°F

644845 for use with Bosch®

Replaces Part Number:



Bosch® 644845 & 667256 Bosch®/EVOLFLTR10® filter system including the Bosch® Evolution 500 Series Bosch® 800 Series Bosch® KAD62 Series Siemens® KA62 Series	Neff® K5930 Series Neff® K5920 Series Thermador® 9000 077104, 9000 077095 UltraClarity® REPLFLTR10, 101443 0109, 101732 0109, BT-644845
---	--

Replacement Cartridge

WF284 for use with Electrolux®

Replaces both blue & white end cap model Part Numbers:



Frigidaire®/Electrolux®
218710901, 218710902, 218717805, 218732306, 218904501,
218904602, 218907800, 240389101, 240389102, 240394501,
5303917752, 5303917836, 5303917937, 5303918017, SWFB, SWF1CB,
SWFCB, WFB, WF1CB, WFCB, WFCB12, WFCB18, WFCB20

Power SourcePlus®
NGRG-100, NGRG-2000, RC101, RC200, RF200, RF10, RF100,
RG100, RC101, RC200, RF200, RF10, RF100

Kenmore®/Sears®
46-9910, 46-9906, 9910P, 046991000, 0469906000

Note: The filter cartridge sits inside of a white plastic "cup" and you will need to unscrew the cup before you can see the filter.

SUPCO's filters are not affiliated, endorsed or sponsored by the referenced OEMs.

CS10398 Crisper Shelf

Replaces WR32X1094,
WR32X10398



KA12 Kleen Air® Odor Absorber

- 8 oz. Bottle
- 12 pack



REFRIGERATOR DOOR GASKETS

PART NO.	SUB-ZERO® NO.	OLD SUB- ZERO® NO.	DIMENSION
SZ0573	7010573		67.5 X 27.5
SZ0574	7010574		67.25 X 17.625
SZ0575	7010575	3211100	47.75 X 33.75
SZ0578	7010578	3211140	58.5 X 33.75
SZ0583	7010583	3212100	59 X 34
SZ0584	7010584	3212110	67.75 X 27.75
SZ0592	7010592		33.75 X 18.25
SZ0609	7010609	3210180	29.625 X 23.25

PART NO.	REPLACEMENT FOR GE® NO.
SGE10236	WR24X10236 Fresh Food Door Gasket
SGE10229	WR24X10229 Freezer Door Gasket



Direct Replacement

PART NO.	REPLACES
SAD68	MAYTAG® 70048-1
SAD70	MAYTAG® 70048-2
SAD72	MAYTAG® 70048-3
SCS102	WHIRLPOOL® 2188456A
SCS112	WHIRLPOOL® 2188448A
SCS115	WHIRLPOOL® 2188445A
SGE127	GE® WR24X313
SGE286	GE® WR24X286
SGE287	GE® WR24X287
SGE312	GE® WR24X312
SGE318	GE® WR24X318
SGE319	GE® WR24X319
SGE450	GE® WR24X450
SGE485	GE® WR24X485
SGE486	GE® WR24X486

Universal

PART NO.	COLOR	MAXIMUM DOOR SIZE
Four Piece		
SU2001	White	20" X 30"
SU2002	White	32" X 42"
SU2003	White	32" X 55"
SU2004	White	36" X 84"
SU2213	White	36" X 68"
SU2301	White	20" X 30"
SU2302	White	32" X 42"
SU2303	White	32" X 55"
SU2304	White	36" X 84"

SUB ZERO® NO.	SUPCO® NO.	AVAILABLE	DESCRIPTION
3110380	SZ3110380	Now	New Direct Replacement overload
4200520	SZ4200520	Now	Direct Replacement Icemaker
4200521	SZ4200521	Now	New Direct Replacement Icemaker
4200522	SZ4200522	March 1, 2013	New Direct Replacement Icemaker
4201760	SZ4201760	March 1, 2013	New Direct Replacement Icemaker
7002738	SZ7002738	March 1, 2013	New Direct Replacement Icemaker
7002748	SZ7002748	March 1, 2013	New Direct Replacement Icemaker
7006922	SZ7006922	Now	New Direct Replacement relay / overload kit
7015994	SZ7015994	Now	New Direct Replacement overload
7016006	SZ7016006	Now	New Direct Replacement relay
7016202	SZ7016202	Now	New Direct Replacement Icemaker Valve Adapter
7016396	SZ7016396	Now	New Direct Replacement relay
819100	SZ819100	Now	New Direct Replacement relay / overload for 506 series

PART NO.	SUB-ZERO® NO.	OLD SUB- ZERO® NO.
ES18810	7004257	3060030
ES18809	7004259	3060020
ES18806		3060140



ES18806

DEFROST TIMERS

UET Series Universal Adjustable Electronic Defrost Timers



- Replaces Over 2500 Original Part Numbers
- Cross Reference Included In Every Package
- Available In 120 and 240 Volts

The UET will directly replace all Whirlpool® "Continuous Run" and "Cumulative Run" defrost timers as well as all other makes. The housing of the UET has dimensions that will allow the UET to replace Paragon®, Invensys®, Nascorp®, and most other manufacturers. "Defrost Frequency" is adjustable from 4 to 12 hours, and the "Defrost Time" is adjustable from 10 to 35 minutes.

A MUST FOR EVERY TRUCK

- Solid State Design
- Defrost Frequency 4 To 12 Hours
- Defrost Time 10 - 35 Minutes



Enlarged view of Adjustable Defrost Time options

PART NO.	VOLTAGE	FREQUENCY	MIN/MULTI
UET120	120	50/60 Hz	6
UET240	208/240	50/60 Hz	6

SZ3081180 Defrost Timer Sub-Zero®

Direct replacement defrost timer to replace the Sub-Zero® 3081180. Wiring instructions included.



SZ7014648 Defrost Timer Sub-Zero®

Direct replacement defrost timer to replace the Sub-Zero® 7014648. Wiring instructions included.

SZ4387766 Sub-Zero® Relay and Overload Kit

Replaces Sub-Zero® and Scotsman® 4387766 relay overload kit.



DEFROST TIMERS



Energy Saving Exact Replacements

PART NO.	REPLACES O.E.M. NO.	CYCLE TIME HOURS	DEFROST TIME MINUTES
SPA12930 (w/knob)	Maytag® 10129301 Electrolux® 216744400	12	32
SPA1401AD	Admiral® 66128-1 Electrolux® 215846604	6	21
SPB1401F	Frigidaire® 5300628518 Maytag® 68233-2	8	20
SPD1401AM	Amana® D70041-4 Maytag® R0131577 Frigidaire® 5303321915	8	32
SPG1401GE	GE® WR9X330 Maytag® R0168026	6	25
SPK1401GE	GE® WR9X387 Maytag® R0168027 Amana® D7004119 Amana® D7790403	10	30
SPM10530 (w/knob)	Maytag® 10530703	8	21
SPM6823-3	Maytag® 68233-3 Amana® D7004112 GE® WR9X388	10	21

Energy Saving Exact Replacements

PART NO.	REPLACES O.E.M. NO.	INTERNAL	CYCLE TIME	DEFROST TIME	VOLTS
SC950	GE® WR9X481	Resistor	6	25	120V
SC951	GE® WR9X482	Resistor	8	30	120V
SC952	GE® WR9X489 GE® WR9X10049 Electrolux® 5304406555	Capacitor	16	35	120V
SC953	GE® WR9X548	Resistor	6	25	120V
SC954	GE® WR9X483 GE® WR9X10041 GE® WR9X10075 GE® WR9X10101 GE® WR9X10111	Resistor	10	30	120V
SC955	GE® WR9X502 GE® WR9X387	Resistor	6	25/120V	
SC956	GE® WR9X516 GE® WR9X10003	Resistor	10	25/240V	

Flying Lead Timers



PART NO. 12/BOX	PART NO. 200/BOX	REPLACES O.E.M. NO.	CYCLE TIME	DEFROST TIME	MALLORY® NO.	PARAGON® NO.	UNI-LINE® NO.
SPA1403FL	SPA1403XX	Whirlpool® 482493 Electrolux® 5303917634 Maytag® 68233-2 Haier® 60938312 Sub-Zero® 3081180	8	21	34885	E769-00 B931-00	3002-904 UX-2001-00
SPF17633		Whirlpool® 4391974 Electrolux® 5303917633 Maytag® 68233-1	6	21	34886 34895	A769-00 E1111-00	3002-901



Classic Style Defrost Timers (Metal Top)

PART NO. 12/BOX	PART NO. 75/BOX	REPLACES O.E.M. NO.	CYCLE TIME	DEFROST TIME	MALLORY® NO.	PARAGON® NO.	PARAGON® NO.	UNI-LINE® NO.
SPB931WP	SP3931XX	Whirlpool® 876369 Whirlpool® 482493; Sub-Zero® 3081180	8	21	34885	E769-00	E931-00	3002-904 UX-2001-00
SPG1111GE	SPG1111XX	GE® WR9X330	6	25	34887	B769-00	D1111-00	3002-902
SPJ1111AM		Amana® D700414 Frigidaire® 5303321915 GE® WR9X396	8	32	34982	D769-00	K1111-00	3002-905
SPL1111W	SPL1111XX	Westinghouse® 5300900072	6	25	34891	G769-00	B1111-00	3002-903
SPN1111AD	SPN1111XX	Whirlpool® 4391974 Admiral® 66128-1	6	21	34886	A769-00	E1111-00	3002-901

COLD CONTROLS

GC Series

Direct Replacement Cold Controls

PART NO.	REPLACES
GC116	GE® WR9X208
GC161	ELECTROLUX® 5303200810
GC175	GE® WR9X405
GC177	GE® WR9X411
GC185	WHIRLPOOL® 819470
GC188	GE® WR9X491
GC192	GE® WR9X499
GC193	ELECTROLUX® 5304404821
GC195	MAYTAG® 61005789

GC500 Series Kits

PART NO.	NORMAL °F		CALIBRATION °F		DIFF °F	CAPILLARY LENGTH
	OFF	ON	WARM OFF	COLD ON		
GC501	9	20	38	-16	11	42"
GC503	9	26	42.5	-16	17	42"
GC505	31	36	49	16	5	24"
GC506	18	31	48.5	-7	13	24"

Thermostats rated 125 VAC, 1/2 HP, 20 Amps F.L. - 80 Amps L.R., SPST switch action.

GC600 Series Kits

PART NO.	NORMAL °F		CALIBRATION °F		DIFF °F	CAPILLARY LENGTH
	OFF	ON	WARM OFF	COLD ON		
GC601	-5	4	22	-29	9	78"
GC602	-13	0	12	-30	13	78"
GC604	-12	6	20	-34	18	36"
GC607	-8	1	13	-23	9	31"
GC609	-7	9	23	-26	16	24"

Thermostats rated 125 VAC, 1/2 HP, 20 Amps F.L. - 80 Amps L.R., SPST switch action.

GC700 Series Kits

PART NO.	RANGE °F			CAPILLARY DETAILS		ELECTRICAL RATINGS 120/208/240 VAC		
	COLD OFF	WARM ON	DIFF °F	LENGTH	STYLE	SWITCH	F.I.A.L.	R.A.
GC701	52	93	6	18"	Air Coil	PST	20A	80A
GC707	52	93	6	36"	Straight	SPST	25A	80A

Thermostats rated 125 VAC, 1/2 HP, 20 Amps F.L. - 80 Amps L.R., SPST switch action.

THERMOSTATS

ML Series Defrost Thermostats

- Heavy Duty Rating 10 Amps @ 120 Volts / 5 Amps @ 240 Volts
- 12" Leads

THERMODISC®

PART NO.	OPEN °F	CLOSE °F	DIFF. °F	MARS®		MIN/MULTI
				UNILINE®		
ML37	37	47	10			
ML45	45	25	20	33008	31-001 17001	5 pc
ML50	50	30	20	33009	31-002 17003	5 pc
ML55	55	35	20	33010	31-003 17005	5 pc
ML60	60	40	20	33011	31-004 17007	5 pc
ML70	70	50	20	33012	31-005 17009	5 pc
ML80	80	30	50	33020	31-006 17011	5 pc



General Purpose L Series

"L" Series, Single Pole - Single Throw THERMODISC®

PART NO.	OPEN (°F)	CLOSE (°F)	DIFF (°F)
L120	120	110	10
L125	125	115	10
L130	130	115	15
L135	135	120	15
L140	140	120	20
L145	145	125	20
L150	150	130	20
L155	155	135	20
L160	160	140	20
L165	165	145	20
L170	170	150	20
L175	175	155	20
L180-20	180	160	20

PART NO.	OPEN (°F)	CLOSE (°F)	DIFF (°F)
L180-40	180	140	40
L200	200	160	40
L205	205	165	40
L225	225	185	40
L240	240	200	40
L250	250	210	40
L260	260	220	40
L270	270	230	40
L290	290	250	40
L300	300	260	40
L320	320	280	40
L340	340	300	40



"LD" Series - Single Pole - Double Throw

PART NO.	OPEN (°F)	CLOSE (°F)	DIFF (°F)
LD120	120	105	15
LD130	130	115	15
LD135	135	120	15
LD140	140	120	20
LD145	145	125	20
LD155	155	135	20
LD170	170	150	20
LD190	190	170	20
LD200	200	160	40
LD225	225	185	40
LD240	240	200	40
LD270	270	230	40
LD290	290	250	40

THERMODISC®



THERMOSTATS

SL Series Exact Replacement Thermostats

SL2690

Tube Mount Clip
Around Tube
Open 47°F
Close 22°F
Replaces Gibson® G162690-1,
Frigidaire® 08000073,
08000805,
5303917625



SL2691

Mount Kit (includes
Tube & Push-in)
Open 47°F
Close 22°F
Replaces Frigidaire® 5303917954,
GE® WR50X55



SL2697

Mount Side
Push-On
Open 70°F
Close 12°F
Replaces Whirlpool® 4387489,
482290



SL7490

Tube Mount 5/16"
Push-On
Open 48°F
Close 18°F
Replaces Whirlpool® 4387490,
2183073, 2176941
9791823



SL8509

Mount Snap-On
Open 40°F
Close 15°F
Replaces Admiral® 52085-9
52085-5,
52085-20



SL8528

Mount Snap-On
Open 47°F
Close 15°F
Replaces Admiral® 52085-28
69408966



SL10068

Tube Mount 3/8"
Open 140°F
Close 110°F
Replaces GE® WR50X10068



DEFROST HEATERS

Universal Replacement Glass Defrost Heaters

PART NO.	ELECTRICAL DESCRIPTION	SPECIFICATIONS	OVERALL LENGTH	GLASS LENGTH
SH264	Two Series Tubes	550 W, 115 V	9 1/4"	8 1/2 "
SH267	Single Tube	500 W, 115 V	23 13/16 "	22 13/16 "
SH271	Two Series Tubes	600 W, 115 V	8 3/4"	8"



SH307

Exact Replacement Defrost Heaters

PART NO.	DESCRIPTION	ELECTRICAL SPECIFICATIONS	OVERALL LENGTH	GLASS LENGTH
SH307	GE® WR51X411	425 W, 120 V	23 7/16"	22 1/8 "
SH308	GE® WR51X413	450 W, 120 V	15 1/4 "	13 7/16 "
SH309	GE® WR51X 442: 2 Tube Brackets incld.	600 W, 120 V	9 1/2"	8 1/4"
SH310	GE® WR51X443: 2 Tube Brackets incld.	772 W, 120 V	12 13/16 "	11 9/16"
SH319	Maytag® 60106-34	400 W, 120 V	18"	17 1/4 "
SH320	Maytag® 60106-35	450 W, 120 V	20 7/16 "	19 5/8 "
SH323	GE® WR51X10055	725 W, 120 V	12"	10 3/4"
SH324	GE® WR51X10053	575 W, 120 V	9 1/2"	8 1/4"
SH325	GE® WR51X10101	575 W, 120 V	9 1/2"	8 1/4"
SH413	Whirlpool® 978331	650 W, 120 V	23 5/8 " x 6 1/2"	Incoloy®
SH414	Whirlpool® 978945	650 W, 120 V	26 5/8 " x 6 1/4"	Incoloy®
SH419	Electrolux® 5303001362	425 W, 120 V	20 1/4" x 3 1/8"	Incoloy®
SH442	WP® 851363	775 W, 120 V	18 5/8 " x 9 5/16"	Incoloy®



SH324

DRIERS

SUD Series Copper Driers

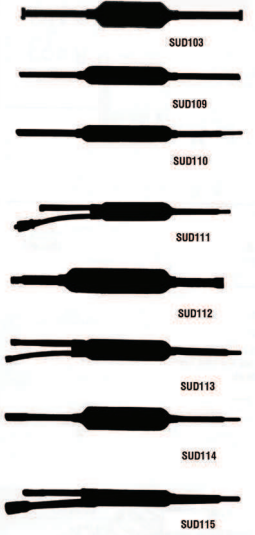
SUPCO® Copper Driers are high quality, high capacity original equipment components for use on domestic and commercial refrigerators, freezers and air conditioners.

Features

- 100% XH-9® beaded molecular sieve
- Hermetically sealed
- Copper shells and end tubes
- High capacity
- Easy break off grooved ends

NOTE: All driers are compatible with all refrigerants and oils.

Maximum working pressure 500 psi



PART NO.	DROPS OF WATER REMOVED				RECOMMENDED	
	R-12		R-22		TONNAGE	
	75°	125°	75°	125°	R-12	R-22
SUD103	37.5	34	34	32	1/3	1/2
SUD109	37.5	34	34	32	1/3	1/2
SUD110	37.5	34	34	32	1/3	1/2
SUD111	74	68	68	64	3/4	1
SUD112	99	93	95	90	1	2
SUD113	74	68	68	64	3/4	1
SUD114	74	68	68	64	3/4	1
SUD115	37.5	34	34	32	1/3	1/2
SUD116	74	68	68	64	3/4	1

SUPCO® Copper Extended Driers

PART NO.	DESCRIPTION	INLET	OUTLET	PROFILE (SEE CHART)	LENGTH
SUD103	1" Plugged Ends	1/4" O. D.	1/4" O. D.	A	8"
SUD109	3/4" Non-Directional	1/4" O. D.	1/4" O. D.	B	7 1/2"
SUD110	3/4" Fused Ends	1/4" O.D.	1/4" O.D.	C	8 7/8"
SUD111	1" Charging Drier	1/4" O.D. 1/4" Flare	1/4" O.D. or Cap	D	9 5/8"
SUD112	1" Step Down Drier	5/16" O.D.	5/16" O.D. or Cap	E	10 3/4"
SUD113	1" Double Inlet	(2)1/4" O. D.	1/4" O. D.	F	8 3/4"
SUD114	1" Fused Ends	1/4" I.D. 1/4" O. D.	1/4" O.D. or Cap	G	8 3/4"
SUD115	3/4" Charging Drier	1/4" I.D. 1/4" O. D. 1/4" Flare	1/4" O. D. or Cap	H	9 5/8"
SUD116	1" Non-Directional	3/16", 1/4", 5/16" I.D.	5/16" I.D. or Cap	J	8 3/4"

WASHER REPAIR PARTS

Whirlpool® Repair Parts

PART NO.	DESCRIPTION	REPLACES
ES247	Lid Switch	3949247
ES671	Lid Switch	285671
ES8084	Lid Switch	8318084
ES9238	Lid Switch	3949238
LP210	Lid Switch	279347
LP115	Washer Pump	285317
LP116	Washer Pump	3363394
LP121	Washer Pump	3363892
LP753	Motor Coupler	285753A
LP338	Agitator Dogs (4 pcs)	285770
LP338D	Agitator Dogs (12 pcs)	285770D
LP285	Cam Kit	285811
LP785	Washer Clutch	285785



GE® Repair Parts

PART NO.	DESCRIPTION	REPLACES
LA189	Tub Strap	WH1X2727
LP112	Washer Pump	WH23X42
LP510	Tub Boot	WH8X246



Miscellaneous Washer Repair Parts

PART NO.	DESCRIPTION	MIN/MULTI
GVW151	Universal Replacement Valve	
SSD6	Universal Drain Hose - 6 feet	25 pcs
SSD8	Universal Drain Hose - 8 feet	20 pcs
SSD6GE	GE® Drain Hose - 6 feet	25 pcs
SSD8GE	GE® Drain Hose - 6 feet	20 pcs
TB123A	Universal Spanner Wrench	
WV1	Universal Washer Water Valve	-



Maytag® Repair Parts

PART NO.	DESCRIPTION	REPLACES
ES682	Lid Switch	22001682
ES7166	Lid Switch	207166
LP123	Washer Pump	21001906
LP128	Washer Pump	21002240



OVEN RANGE IGNITERS

SGR4001

Direct Replacement Viking® PB040001

- This range igniter is used on all Viking Glow Bar Ignition Systems® both bake and broil



SGR414

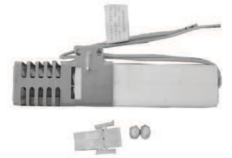
Direct Replacement Maytag® 12400035

- Replaces hundreds of OEM #'s
- Hardware included
- Replaces SGR407- SGR412



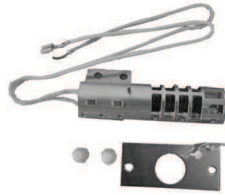
SGR Series Flat Igniters

PART NO.	LENGTH
SGR407	7 1/2"
SGR409	5 1/2"
SGR410	6 1/4"
SGR412	4 1/2"



SGR Series Round Igniters

PART NO.	LENGTH
SGR401	7 1/2"
SGR402	9"
SGR403*	5 1/2"



RANGE PRODUCTS

Range Knobs

PART NO.	DESCRIPTION
RK100	BLACK, ELECTRIC BURNER KNOBS (4)
RK101	BLACK, ELECTRIC BURNER & OVEN KNOB (1)
RK103	BLACK, ELECTRIC BURNER & OVEN KNOB KIT (5)
RK200	BLACK, GAS BURNER KNOBS (4)
RK201	BLACK, GAS BURNER & OVEN KNOB (1)
RK203	BLACK, GAS BURNER & OVEN KNOB KIT (5)
RK301	WHITE, ELECTRIC BURNER KNOB (1)
RK362	WHIRLPOOL® REPLACEMENT KNOB KIT 814362 (9)
RK458	WHIRLPOOL® REPLACEMENT KNOB 307458
RK699	GE® REPLACEMENT TIMER KNOB KIT WB3X5699 (3)



Surface Receptacles

PART NO.	MIN/ REPLACES	MULTI
RR105	GE® WB17X210	-
RR122	GE® SURFACE WB17X5051	-
RR109	ELECTROLUX® 5303912666	10 pcs
RR110	WHIRLPOOL® 330031	20 pcs
RR117	ELECTROLUX® 5303935058	10 pcs
RRUPR	UNIVERSAL RECEPTACLE REPLACES UPR	-
RRUPS	UNIVERSAL RECEPTACLE REPLACES UPS	-
RR123	CERAMIC BLOCK MAYTAG® 12001676	-



Range Wire - Triplex, High Temperature

PART NO.	DESCRIPTION
RP0512G	5' 12GA 200°C TRIPLEX HIGH TEMP WIRE
RP2512G	25' 12GA 200°C TRIPLEX HIGH TEMP WIRE
RP0514G	5' 14GA 200°C TRIPLEX HIGH TEMP WIRE
RP2514G	25' 14GA 200°C TRIPLEX HIGH TEMP WIRE
RP0512GB	5' 12GA 200°C TRIPLEX (GL BRD) HIGH TEMP WIRE
RP0514GB	5' 14GA 200°C TRIPLEX (GL BRD) HIGH TEMP WIRE
RP2512GB	25' 12GA 200°C TRIPLEX GL BRD HIGH TEMP WIRE
RP2514GB	25' 14GA 200°C TRIPLEX GL BRD HIGH TEMP WIRE



Most Popular Plug In Surface Elements

PART NO.	SIZE
SU201	3 turn 6" 1250 watts 240 Volts
SU202	4 turn 8" 2100 watts 240 Volts



REPAIR FOR LG® PARTS

L3003

- Replacement Dryer Thermostat for LG® 6931EL3003



L3001

- Replacement Dryer Thermostat for LG® 6931EL3001



DE1001

- Replacement Dryer Element Assembly for LG® 6931EL1001



SDE365

- Dryer Igniter
- Replaces 5318EL3W1A



SURFACE ELEMENTS

Emerson® Surface Elements

PART NO.	EMERSON® NO.	DESCRIPTION	OLD SUPCO NO.
CH30M1	407804	Replaces WB30M1	SU122
CH30M2	407820	Replaces WB30M2	SU121
CH30T10074		Replaces WB30T10074	SU151
CH30T10078		Replaces WB30T10078	SU150
CH30X341	404718	Replaces WB30X341	SU119
CH30X342	404700	Replaces WB30X342	SU120
CH30X348	407783	Replaces WB30X348	SU348
CH30X359	407767	Replaces WB30X359	SU359
CH30X354	404697	Replaces WB30X354	SU116
CH30X356	404689	Replaces WB30X356	SU115
MP15MA	404195	4D6 1500W Surface Element	SU304
MP15YA	58692003	4T6 1500W Surface Element	SU205
MP21YA	404099	5T8 2100W Surface Element	SU204
MP26YA	58693005	5T8 2600W Surface Element	SU206
SP12YA	58690001	3T6 1250W Surface Element	SU201
SP21YA	58691001	4T8 2100W Surface Element	SU202
MP21MA	404208	5D8 2100W Surface Element	SU305
MP26MA	404216	5D8 2600W Surface Element	SU306
SP12MA	404101	3D6 1250W Surface Element	SU301
SP21MA	404110	4D8 2100 Surface Element	SU302



Emerson® Bake & Broil

PART NO.	BAKE OR BROIL	REPLACES
CH1011	Bake	RP743
CH2851	Bake	RP799
CH2858	Bake	RP777
CH2859	Broil	RP789
CH2860	Bake	RP841
CH2864	Bake	RP716
CH2866	Bake	RP2866
CH2867	Broil	RP2867
CH2891	Bake	RP774
CH4107	Bake	74004107
CH44K10002	Broil	WB44K10002
CH44K10005	Bake	WB44K10005
CH44K5009	Bake	WB44K5009
CH44K5012	Bake	WB44K5012
CH44T10009	Bake	WB44T10009
CH44T10010	Bake	WB44T10010
CH44T10011	Bake	WB44T10011
CH44T10014	Bake	WB44K10014
CH44T10018	Bake	WB44K10018
CH44X10009	Bake	WB44X10009
CH44X10016	Bake	WB44X10016
CH44X126	Bake	RP44X126
CH44X134	Broil	RP44X134
CH44X185	Broil	RP44X173
CH44X200	Bake	RP44X200
CH44X5019	Bake	RP980
CH44X5043	Bake	RP44X5043
CH44X5074	Broil	RP44X5074
CH44X5082	Bake	RP44X5082
CH44X5083	Bake	RP44X5083
CH44X5099	Bake	RP44X5099
CH4825	Bake	RP828
CH4836	Bake	RP790
CH4854	Bake	RP838
CH4874	Broil	RP829
CH4879	Bake	RP837
CH4896	Bake	RP832
CH5002	Bake	318255002
CH5104	Bake	316075104
CH528	Bake	RP528
CH550	Bake	RP550

Emerson® Bake & Broil

PART NO.	BAKE OR BROIL	REPLACES
CH556	Bake	RP556
CH5818	Bake	RP842
CH5828	Bake	RP795
CH5829	Bake	RP856
CH5830	Bake	RP798
CH5837	Broil	RP796
CH584	Bake	RP584
CH5841	Bake	RP5841
CH5853	Bake	RP5853
CH5855	Broil	RP5855
CH5862	Bake	RP5862/RP7019
CH587	Bake	RP587
CH613	Bake	RP613
CH620	Bake	RP620
CH624	Bake	RP624
CH625	Bake	RP625
CH628	Bake	RP628
CH629	Bake	RP629
CH641	Bake	RP641
CH643	Bake	RP643
CH653	Bake	RP653
CH664	Bake	RP664
CH671	Broil	RP671
CH672	Bake	RP672
CH673	Bake	RP673
CH679	Bake	RP679
CH687	Bake	RP687/RP778
CH691	Bake	RP691
CH700	Bake	RP700
CH7340	Broil	9757340
CH775	Bake	RP775
CH776	Bake	RP776
CH779	Broil	RP779
CH781	Bake	RP781
CH809	Bake	RP809
CH825	Bake	RP825
CH8541	Bake	9758541
CH978	Bake	RP978
CH979	Bake	RP979
CH987	Broil	RP987

DISHWASHER REPAIR PARTS

DW10013

Dishwasher Pump Assembly

- Ready to install
- Hardware included
- Replaces: GE® WD26X10013, WD26X10011, WD2610007, WD26X10003, WD26X77 and many more



DW105

Pump Rebuild Kit

- Used for WD26X10013
- Replaces: GE® WD19X10032, WD19X62



DW804

Connector

- GDK1 / GDK2



DW156

Door Corner Gasket - Right

- Replaces: GE® WD8X227



DW157

Door Corner Gasket - Left

- Replaces: GE® WD8X228



SSDW7

Universal Drain Hose

- 5/8" X 7 feet
- 5/8", 3/4", 1 1/8" Cutoffs



DISHWASHER REPAIR PARTS

DW10230

Dishwasher Lower Rack

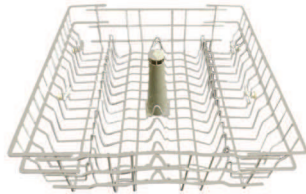
Replaces: WD28X10230



DW10001

Dishwasher Lower Rack

Replaces: WD28X10001



DW3681

Dishwasher Element

Replaces: W10273414



DW309 Door Cable

Replaces: GE®WD7X14



DRYER & WASHER REPAIR PARTS

DE6105

Dryer Door Switches

PART NO.	CAN REPLACE
DE6105	Whirlpool® 3406105
DE6107	Whirlpool® 3406107



ES9238

Washer Lid Switches



DE2002A

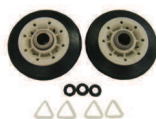
Drum Roller

Replaces: 4851EL2002A



Whirlpool® Repair Parts

PART NO.	DESCRIPTION	REPLACES
DE148	Dryer Element	LA1044
DE353	Dryer Flame Sensor	303377
DE602	Blower Wheel	303836
DE698	Dryer Element	4391960
DE702	Drum Roller	349241
DE702T	Drum Roller Kit	349241T
DE7747	Dryer Element	3387747
DE838	Dryer Element	279838
DE4771	Dryer Element	8544771
DE6107	Door Switch	3406107
L15525W	Dryer Thermostat	3387134
SET176	Dryer Thermostat	53-0771
SET403	Dryer Thermal Fuse	53-1182
SET404	Dryer Thermostat	53-1096
SET405	Dryer Thermostat Kit	LA1053
SET407	Thermal Cutout	33001762
SET408	Thermal Cutout	306604
SET184	Thermal Cutoff Kit	279769
SET185	Dryer Thermostat	3977767
SET194	Dryer Thermostat	279816
SET197	Dryer Thermostat Kit	3977767
SET198	Dryer Thermostat	3390291
SET401	Thermal Cutout	3392519
SET402	Thermal Cutout	3390719
SET409	Thermal Cutout	3399849



Dryer Igniters

PART NO.	DESCRIPTION	REPLACES
SDE364	Dryer Igniter	304970 / 4391996
SDE365	Dryer Igniter	5318EL3W1A
SDE358	Dryer Igniter	WE4X739
SDE366	Dryer Igniter	31001556



Dryer Restring Kits

PART NO.	DESCRIPTION	REPLACES
DE315	Restring Kit	WE11X60
DE333	Restring Kit	WE11X203
DE334	Restring Kit	WE11M21C
DE1746C	Restring Kit	31001946C

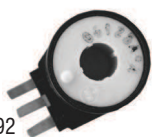


RLE202 12 Ft Dryer Vent Cleaning Kit



DE382AWR Booster Coil

- 3 Terminals
- Replaces GE® WE4X692



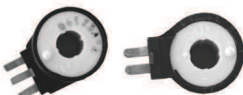
DE382BWR Secondary Coil

- 2 Terminals
- Replaces GE® WE4X691



DE382WR Includes both Booster and Secondary Coil

- Replaces 279834, 12001349, 66-6615, WE04X10020, 5303931775



RJR601 3 Ft Dryer Vent Cleaning Kit



R3203612 12 Ft Extension Kit





SEALED UNIT PARTS CO., INC.
PO Box 21, 2230 landmark Place, Allenwood, NJ 08720 USA
Phone: 732-223-6644 Fax: 732-223-1617
www.supco.com • info@supco.com