

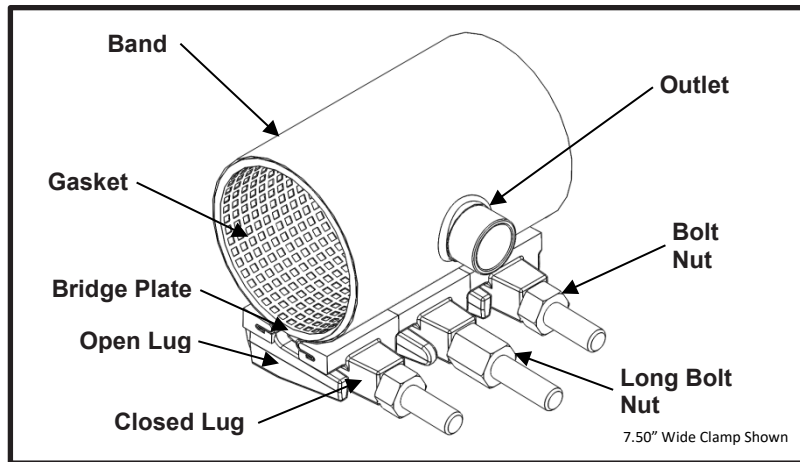


Smith-Blair  
a xylem brand

# SPECIFICATION

## FULL CIRCLE<sup>®</sup> TAPPED REPAIR CLAMP

### MODEL 238

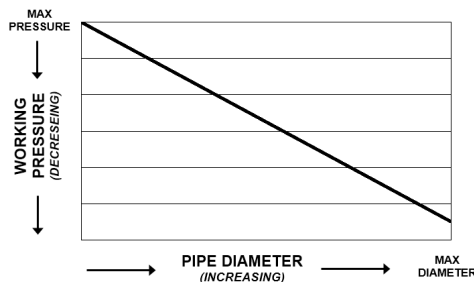


**Do not tap through this product!!!**  
**Only use for repair or installations where the pipe is drilled prior to installation.**

#### APPLICATIONS

- **Typical Uses**
  - Repair leaks at broken or torn out service connections or branch lines
  - For use on installations where the pipe is drilled prior to installation
- **Standard Pipe Sizes**
  - 3” to 12” nominal
- **Standard Taps**
  - NPT: 1/2”, 3/4”, 1”, 1-1/4”, 1-1/2”, 2”
  - CC/AWWA: 1/2”, 3/4”, 5/8”, 1”, 1-1/4”, 1-1/2”, 2”
  - BSP: 1/2”, 3/4”, 1”, 1-1/4”, 1-1/2”, 2”

*See Smith-Blair catalog for available pipe diameter and tap size combinations as some combinations are not available*
- **Standard Band Widths**
  - 7.5”, 10”, 12.5”, 15”
- **Type of Pipe**
  - Carbon Steel, Stainless Steel, Ductile Iron, PVC, HDPE DR17 or thicker (with use of spring washers), Asbestos Cement, Copper, Aluminum
- **Working Pressure**
  - Up to 300 psi depending on **pipe size**, type of pipe, type of repair, service conditions, and installation workmanship
  - Up to 255 psi on HDPE pipe





Smith-Blair  
a xylem brand

# SPECIFICATION

## FULL CIRCLE<sup>®</sup> TAPPED REPAIR CLAMP

### MODEL 238

---

#### MATERIALS & FEATURES

- **Band**
  - Type 304 Stainless Steel per ASTM A240
  - Band Thickness: 20 gauge
  - Hemmed ends for lug removal in tight applications
- **Lugs**
  - Cast using Ductile Iron 80-55-06 per ASTM A536
  - Flexi-Coat<sup>®</sup> fusion bonded epoxy finish
  - Slot cast in lug to capture band hem
  - Designed for drop in replaceable bolts
  - One open loop lug and one closed loop lug
- **Gasket**
  - Nitrile (Buna-N) per ASTM D2000
  - Gasket Thickness: 0.192" thickness for clamps 4.50" diameter and smaller  
0.218" thickness for clamps 4.80" diameter and larger
  - Compounded to resist water, oil, natural gas, acids, alkalis, most (aliphatic) hydrocarbon fluids, and many other chemicals
  - Temperature range: -20°F to +180°F
  - Full 360° gridded face gasket with tapered ends
- **Bridge Plate**
  - Type 304 Stainless Steel quarter-hard per ASTM A240
  - Molded and recessed into gasket
- **Outlet**
  - Type 304 Stainless Steel per ASTM A276
- **Bolts**
  - High Strength Low Alloy (HSLA) Steel per AWWA C111/A21.11
  - 5/8"-11UNC x 6.00" long, Track Head Oval Neck with Rolled Threads
  - Fe/Zn coated per ASTM F1941-10
- **Long Bolts**
  - HSLA Steel per AWWA C111/A21.11
  - 5/8"-11UNC x 6.88" long, Track Head Oval Neck with Rolled Threads
  - Fe/Zn coated per ASTM F1941-10
  - Used on clamps 4.50" diameter and smaller to facilitate the initial clamp installation
- **Nuts**
  - HSLA Steel per AWWA C111/A21.11
  - 5/8"-11UNC, Heavy Hex Semi-Finished
  - Fe/Zn coated per ASTM F1941-10
- **Long Nuts**
  - HSLA Steel per AWWA C111/A21.11
  - 5/8"-11UNC x 1.00" long, Heavy Hex Semi-Finished
  - Fe/Zn coated per ASTM F1941-10
  - Used to provide hand tightening during initial clamp installation

#### WELDING

- Welds accomplished using qualified welders
- GTAW weld process utilized



Smith-Blair  
a xylem brand

# SPECIFICATION

## FULL CIRCLE<sup>®</sup> TAPPED REPAIR CLAMP

### MODEL 238

---

#### LISTINGS/STANDARDS

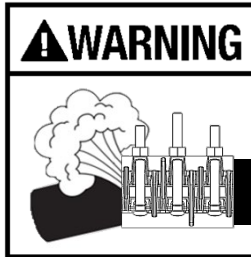
- Certified to NSF/ANSI 61 and NSF/ANSI 372
- Meets applicable portions of AWWA C230
- Flexi-Coat<sup>®</sup> Fusion-Bonded Epoxy Coating meets requirements of AWWA C213

#### OPTIONS

- Type 316 Stainless Steel band
- Type 304 Stainless Steel hardware with fluoropolymer coated nuts to prevent galling
- Type 316 Stainless Steel hardware with fluoropolymer coated nuts to prevent galling
- Alternative gasket material (e.g. Viton, EPDM, etc.)
- Spring washers for use of clamp on HDPE pipe
- Offset gaskets to allow for repairing longer cracks using multiple clamps
- Conductivity feature
- Clamps up to 30" wide

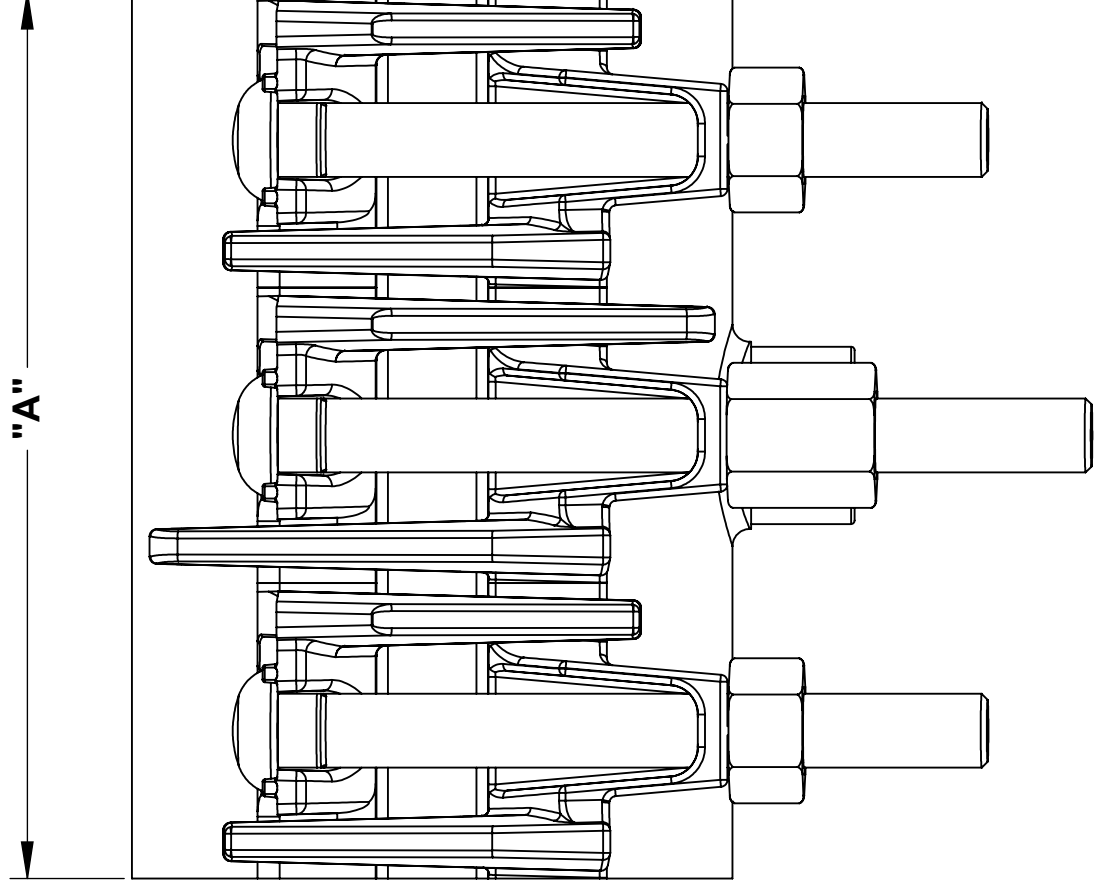
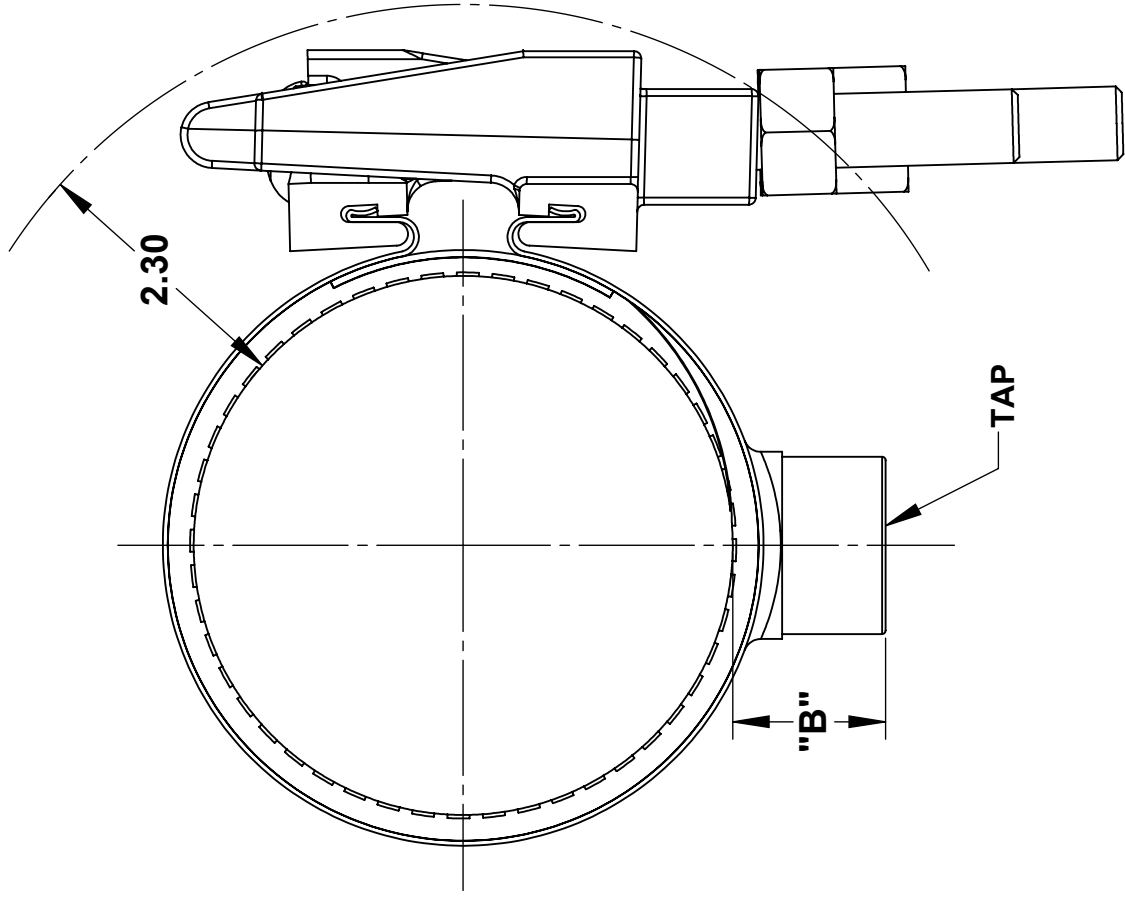
#### NOTES

- Spring washers **are required** when this product is used on DR17 or thicker HDPE pipe (Not recommended for use on HDPE pipe thinner than DR 17)
- Xylem, Smith-Blair, SB stylized, Full Circle and Flexi-Coat are registered trademarks of Xylem, Inc., or one of its subsidiaries.
- These product specifications were correct at the time of publication and are subject to change without notice.
- See the Smith-Blair website for part numbers and ordering information
- See the Smith-Blair website for warranty information
- See the Smith-Blair website for corrosion notice



**THIS PRODUCT DOES NOT RESTRAIN PIPE MOVEMENT.** Proper anchoring is required to prevent pipe pull out. Failure to anchor or improper anchoring can result in dangerous pipe content escape, property damage, serious injury, and/or death. Read the product installation instructions prior to installing this product.

30 Globe Ave, Texarkana, AR 71854  
Ph: 870-773-5127 • Fax: 870-773-5212  
Toll-Free Numbers: Ph: 800-643-9705 • Fax: 800-648-6792



- NOTES:**
1. LONG BOLTS ONLY PROVIDED ON CLAMPS 4.50" DIAMETER AND SMALLER.
  2. SEE SMITH-BLAIR CATALOG FOR AVAILABLE PIPE DIAMETER AND TAP SIZE COMBINATIONS AS SOME COMBINATIONS ARE NOT AVAILABLE.
  3. 7.50" WIDE CLAMP SHOWN OTHER SIZES SIMILAR.

A	BOLT QUANTITY			LONG NUT QUANTITY	SOCKET SIZE
	SHORT	LONG	TOTAL		
7.50	2	1	3	1	1-1/16"
10.00	2	2	4	2	
12.50	3	2	5	2	
15.00	4	2	6	2	

B	SIZE	NPT	CC	BSP
1.30	1/2"	03	04	59
	5/8"	-	05	-
	3/4"	06	07	50
1.50	1"	08	09	51
	1-1/4"	10	11	54
	1-1/2"	12	13	52
	2"	14	-	53

TOLERANCES U.N.O. XX= ±.03 XXX= ±.015 FRACTIONS= ANGLES=±1° MACH. FIN= ALL DIMENSIONS ARE IN INCHES.	NOTES: REMOVE BURRS AND SHARP EDGES DO NOT SCALE DWG.	APP'D	DATE
SCALE: N/A	DRN	CHD	DATE
TITLE			5/20/15
SPECIFICATION			
FULL CIRCLE® TAPPED REPAIR CLAMP			
MODEL 238			
P/N		N/A	
DWG. NO.		SPEC_238.DRW	
REV.		4 OF 4	
REV.		9/5/17	

