

SLOAN[®]

FLUSHOMETERS

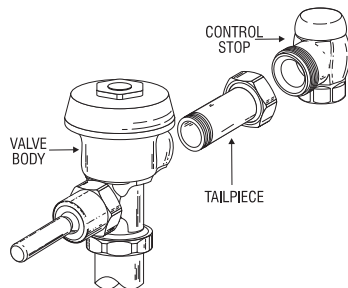
Maintenance Guide

TAILPIECES



The Tailpiece

The Tailpiece is the connection between the Valve Body and the Control Stop. Sloan Adjustable and Ground Joint Tailpieces are threaded into the Valve Body at the factory. Sloan Tailpieces are available in a variety of lengths to accommodate installation rough-in errors and unique installation requirements.



Sloan Flushometer brands feature three types of Tailpiece connections:



H-551 ADJUSTABLE
TAILPIECE



H-5 GROUND JOINT
TAILPIECE

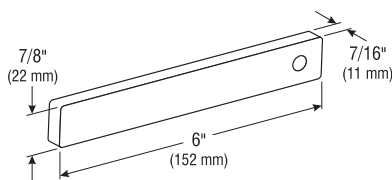


H-130-A ADJUSTABLE
GROUND JOINT TAILPIECE

Tailpiece Replacement

Sloan Adjustable and Ground Joint Tailpieces are assembled into the Valve Body using a pipe thread. Significant force is used to drive the Tailpiece into the Valve Body. As such, removal of the old Tailpiece may be difficult.

For replacement, we recommend using the H-530 Tailpiece Removal Bar (Code No. **0334014**). Remove the Flushometer cover and interior parts. Secure the Tailpiece Removal Bar vertically in a vice. Place the Flushometer Tailpiece over the Bar. The cast lugs inside the Tailpiece will catch on the Bar. Insert a length of 3/4" pipe into the barrel of the Valve Body. Unscrew Tailpiece from Valve Body.



H-530 TAILPIECE REMOVAL BAR
0334014

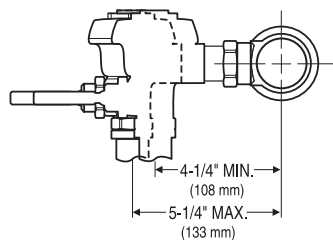
Assemble the new Tailpiece into the Valve Body in the reverse manner. Use teflon tape (or pipe sealant) on Tailpiece pipe threads. Ensure that both the Coupling and the Locking Ring (Adjustable Tailpiece only) are on the Tailpiece before tightening the assembly. Do NOT use sealant on the first few threads of the Tailpiece.

LIMITED WARRANTY

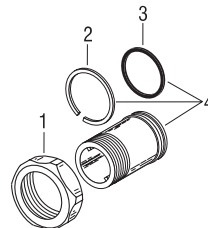
Sloan Valve Company warrants its Flushometer Products to be made of first class materials, free from defects of material or workmanship under normal use and to perform the service for which they are intended in a thoroughly reliable and efficient manner when properly installed and serviced for a period of 3 years (1 year for special finishes) from date of purchase. During this period, Sloan Valve Company will, at its option, repair or replace any part or parts which prove to be thus defective if returned to Sloan Valve Company, at customer's cost, and this shall be the sole remedy available under this warranty. No claims will be allowed for labor, transportation or other incidental costs. This warranty extends only to those persons or organizations who purchase Sloan Valve Company's products directly from Sloan Valve Company for purpose of resale.

THERE ARE NO WARRANTIES WHICH EXTEND BEYOND THE DESCRIPTION ON THE FACE HEREOF. IN NO EVENT IS SLOAN VALVE COMPANY RESPONSIBLE FOR ANY CONSEQUENTIAL DAMAGES OF ANY MEASURE WHATSOEVER.

H-551-A Adjustable Tailpiece Connection



The majority of Flushometers supplied by Sloan since 1964 feature the H-551-A Adjustable Tailpiece. The valve Tailpiece connects to the Control Stop with a sliding O-ring seal. The H-551-A Adjustable Tailpiece standard length is 2-1/16" (54 mm). This is designed for a standard Flushometer installation in which the distance between the centerline of the valve and the centerline of the water supply inlet is 4-3/4" (121 mm). The Adjustable Tailpiece allows for a variance of $\pm 1/2$ " (13 mm) from this nominal dimension.



1	H-550	0308676	Coupling CP
		0308690	Coupling RB
2	H-552	5308381	Locking Ring (package of 12)
3	H-553	5308696	O-Ring (package of 24)
4	H-551-A	0308801	2-1/16" (53 mm) Tailpiece Assembly† CP
		0308802	2-1/16" (53 mm) Tailpiece Assembly† RB
		0308803	3-1/16" (78 mm) Tailpiece Assembly† CP
		0308805	4-1/16" (103 mm) Tailpiece Assembly† CP
		0308807	5-1/16" (129 mm) Tailpiece Assembly† CP
		0308809	6-1/16" (154 mm) Tailpiece Assembly† CP

† Each Tailpiece Assembly includes an H-553 O-Ring and an H-552 Locking Ring.

Abbreviations: CP: Chrome Plated; RB: Rough Brass

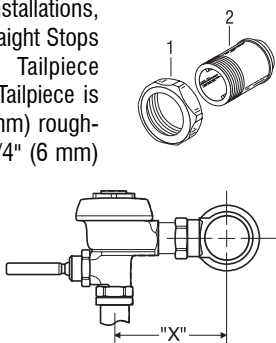
Sloan Valve Company can also provide products not shown in our current catalog. For our special Polished Brass, Lustre Gold, or Satin finishes, consult factory for code numbers. If you have any questions about our products or any installation issues, please contact the Installation Engineering staff at **1-888-SLOAN-14 (1-888-756-2614)**.

The information contained in this document is subject to change without notice.

H-5 Ground Joint Tailpiece Connection

Older valves, valves furnished for salt-water installations, and all Sloan Flushometers furnished with Straight Stops use a metal-to-metal Ground Joint (GJ) Tailpiece connection. The standard length of the H-5 Tailpiece is 1-3/4" (44 mm) for a standard 4-3/4" (121 mm) rough-in dimension; other lengths are available in 1/4" (6 mm) increments.

The Ground Joint Tailpiece connection **cannot** be adjusted in the field, so rough-in must be exact. Replacement H-5 Tailpieces can compensate for rough-in errors.



Chrome Plated Components

1	H-6	0308063	Coupling
2	H-5	See chart ↓	Ground Joint Tailpiece

"X"	Tailpiece Length	Code Number
4-1/4" (108 mm)	1-1/4" (32 mm)	0308019
4-1/2" (114 mm)	1-1/2" (38 mm)	0308023
4-3/4" (121 mm)	1-3/4" (44 mm)	0308026
5" (127 mm)	2" (51 mm)	0308030
5-1/4" (133 mm)	2-1/4" (57 mm)	0308031
5-1/2" (140 mm)	2-1/2" (64 mm)	0308033
5-3/4" (146 mm)	2-3/4" (70 mm)	0308034
6" (152 mm)	3" (76 mm)	0308035
6-1/4" (159 mm)	3-1/4" (83 mm)	0308037
6-1/2" (165 mm)	3-1/2" (89 mm)	0308038
6-3/4" (171 mm)	3-3/4" (95 mm)	0308040
7" (178 mm)	4" (102 mm)	0308041
7-1/4" (184 mm)	4-1/4" (108 mm)	0308042
7-1/2" (191 mm)	4-1/2" (114 mm)	0308043
7-3/4" (197 mm)	4-3/4" (121 mm)	0308044
8" (203 mm)	5" (127 mm)	0308045
8-1/2" (216 mm)	5-1/2" (140 mm)	0308047
9" (229 mm)	6" (152 mm)	0308050

Rough Brass Components

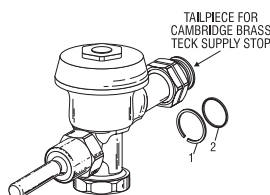
1	H-6	0308063PO	Coupling
2	H-5	See chart ↓	Ground Joint Tailpiece

"X"	Tailpiece Length	Code Number
4-1/4" (108 mm)	1-1/4" (32 mm)	0308018
4-3/4" (121 mm)	1-3/4" (44 mm)	0308028

NOTE: "X" indicates the distance between the centerline of valve and the centerline of the water supply. Ground Joint Couplings are notched for identification.

"XDT" Flushometer for Canadian Teck Valves

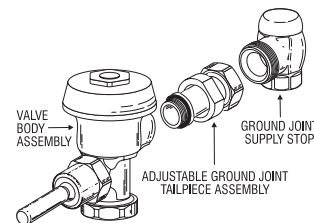
Sloan can provide a Flushometer with a tailpiece that can connect to a Cambridge Brass Teck (Wal-teck) Supply Stop. This special valve assembly is specified as our "-XDT" variation. This tailpiece **cannot** be replaced in the field.



1	H-501	5308934	Locking Ring (package of 6)
2	H-589	5308958	O-Ring (package of 6)

H-130-A Adjustable Ground Joint Tailpiece Connection

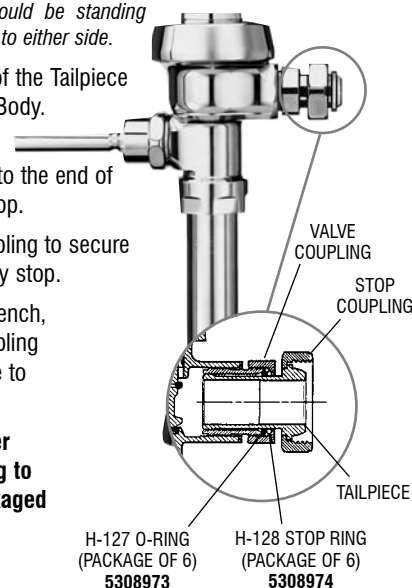
To accommodate adjustability in a ground joint connection, Sloan developed the H-130-A Adjustable Ground Joint Tailpiece Connection. This is commonly supplied on valves used in retrofit applications where an existing Ground Joint Supply Stop (made by either Sloan or another manufacturer) is utilized. The H-130-A Tailpiece is supplied as our "-XD" variation and requires a special valve body. It **cannot** be used to replace an H-551-A or an H-5 Tailpiece.



To install the Adjustable Ground Joint Tailpiece:

NOTE: Flushometer should be standing straight and not leaning to either side.

- Screw threaded end of the Tailpiece into the Flushometer Body.
- Continue turning until tailpiece matches up to the end of the existing supply stop.
- Tighten the Stop Coupling to secure the Valve to the supply stop.
- Using a flat-jawed wrench, tighten the Valve Coupling to secure the tailpiece to the Valve.
- Continue Flushometer installation according to the instructions packaged with the Valve.

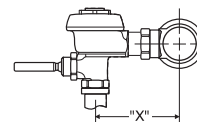


NOTE: DO NOT use pipe dope or thread sealant on any connection. Lubricate O-ring ONLY with water!

O-ring and Stop Ring are available as individual components. All other items are sold only in H-130-A Tailpiece Retrofit Kit (see table below).

Tailpiece Retrofit Kit (when used with Ground Joint Supply Stop)

Part Number	Code Number	"X" †
H-130-A-1 ‡	0308976	4-3/4" (121 mm)
H-130-A-2	0308983	5-3/4" (146 mm)
H-130-A-3	0308984	6-3/4" (171 mm)
H-130-A-4	0308979	7-3/4" (197 mm)



† When used with a Sloan Ground Joint Supply Stop, the Tailpiece can be adjusted to a shorter or longer length ($\pm 1/2"$ or 12 mm from the "X" dimension shown). When used with Delany Ground Joint Supply Stop, the Tailpiece can be adjusted up to 1" (25 mm) longer from the "X" dimension shown.

‡ Unless otherwise specified, the H-130-A-1 Tailpiece is furnished as standard with all "-XD" variation Flushometer valves.

The information contained in this document is subject to change without notice.