



SharkBite® Polybutylene Transition Couplings

For Copper, CPVC, PEX, and PE-RT to polybutylene Pipe

DESCRIPTION

The SharkBite® Push-To-Connect (PTC) polybutylene transition fittings allow the user to connect copper, PEX, CPVC, and PE-RT pipe to polybutylene in seconds with relative ease.

FEATURES AND BENEFITS

Instant push-fit connection for increased ease-of-use:

No soldering, clamps, unions, or glue required.

Fittings certified to 200 PSI and 200°F (93°C):

Proven durability and quality.

Fits copper tubing, and CTS CPVC, PEX, and PE-RT:

Connects any four types to polybutylene.

Integral pipe liner for PEX, PE-RT, and polybutylene installations:

Integrated design means no loose components, ensures secure, reliable connection.

Design certified and agency listed:

Inspector friendly, peace of mind!

Compact, robust Lead Free DZR brass body:

Foundation of a strong, corrosion resistant, durable fitting.

Design to NSF/ANSI 61, NSF/ASNI 14 and ASSE 1061 product standard for use in potable water and hydronic heating water distribution:

Quality engineered and manufactured.

Approved to be used underground (wrap required in burial installation) and behind walls without access panels.

Designed for hydronic heating as well as potable water distribution.

SPECIFICATION

The tube shall be inserted into the SharkBite PTC Fitting in the first stage through a release collar and then through a stainless steel grab ring. The grab ring has teeth that open out and grip onto the tube. At the second stage the tube shall be pushed through an O-ring protector which aligns the pipe. A specially formulated EPDM O-ring shall be compressed between the wall of the fitting and the tube before the end of the tube reaches the tube stop. Only when the pipe has passed through the O-ring and reached the pipe stop shall a secure joint be created. The fitting shall be a SharkBite PTC Fitting.

U4008LF



U4016



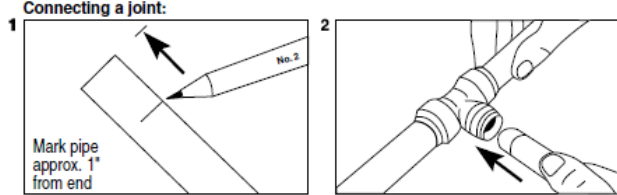


SharkBite® Polybutylene Transition Couplings

For Copper, CPVC, PEX, PE-RT to polybutylene Pipe

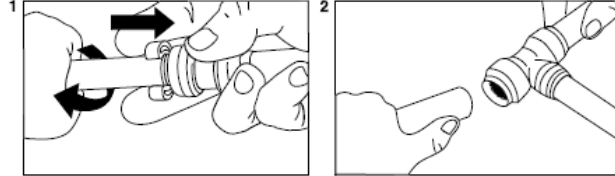
TYPICAL INSTALLATION

Connecting a joint:



1 Mark pipe approx. 1" from end
2 Push the pipe and fitting together firmly with a twisting action until it clicks. Allow at least 1" clearance between fittings for disconnection.

Disconnecting a joint:



1 Push the disconnect clip against the release collar and pull the pipe with a twisting action.
2

(Please consult with local plumbing codes concerning specific water heater piping requirements.)

SPECIFICATION DATA

Performance:

Maximum working pressure 200 psi
Maximum temperature 200°F (93°C)
Service Potable water

Materials:

Body DZR Lead Free Brass
O-ring EPDM
Grab ring Stainless steel
Tube support liner Polysulfone

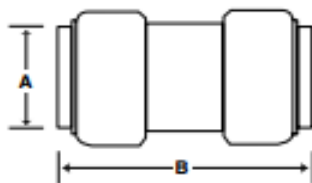
Finish:

Natural Brass or Chrome Plated

Fitting Size	Insertion Depth
1/4"	0.813"
3/8"	0.875"
1/2"	0.938"
5/8"	1.125"
3/4"	1.125"
1"	1.313"

CERTIFICATIONS

The SharkBite PTC polybutylene transition fittings are designed to ASSE 1061, listed NSF/ANSI 61, NSF/ANSI 14, and NSF 372. The SharkBite PTC Fittings are intended for potable and hydronic heating water distribution (note: Glycol mixture for hydronic systems is acceptable up to 100% concentration). The SharkBite PTC Fittings are certified for underground applications (wrap required in burial installations) and as a manufactured joint without access panels.



P/N	A	B
U4008LF	1/2"	2.00"
U4016LF	3/4"	2.35"

