

ProLock®
Twist-to-Lock
System

Product
Catalog



ProLock

& PE-RT Pipe Catalog



Fitting the future

Welcome to a new era of engineering innovation. SharkBite, the leader in push-to-connect plumbing systems introduces the SharkBite ProLock & PE-RT pipe System.

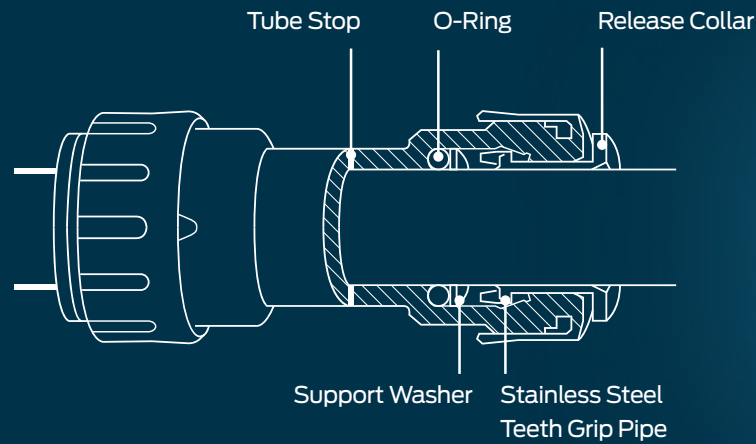
PE-RT Pipe is Polyethylene pipe that has superior flexibility, excellent durability and freeze resistance. It's the perfect pipe for working in tight spaces or if you want to reduce the number of fittings needed for a job.

ProLock is a versatile and innovative plumbing system engineered specifically for use with SharkBite PE-RT and PEX pipe. Its intuitive design makes for one of

the simplest and most dependable fittings on the market. No tools are required to make up a connection. So, if you've got pipe cutters, you're ready to get the job done, with ProLock. With a 25-year system warranty, full code compliance and the patented Twist-to-Lock feature you will never second guess a connection.



How to make a ProLock Connection



To Connect



Step 1: Push
When cutting SharkBite PE-RT Pipe, ensure that the ends are cut square and the surface is smooth. Ensure that both the ProLock fittings and pipe are clean and free of debris. Push pipe onto fitting.



Step 2: Twist
Turn the locking cap quarter turn clockwise to the locked position, an audible click will be heard.



Step 3: Lock
To ensure that the fitting has been locked, check to make sure the indicator marks are aligned.

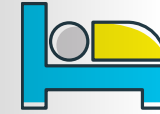
Keep product clean in a bag until ready to use.

To Disconnect

1. Depressurize the system.
2. Turn locking cap quarter turn counter clockwise.
3. Push against release collar and pull pipe to release.



Benefits of ProLock



Peace of Mind

ProLock's rotating cover makes an audible click when the indicator arrows align, giving you a secondary level of confidence, letting you know it's time to move on to your next fitting.



Full Flow

ProLock grips the outside diameter of the pipe which allows for maximum water output.



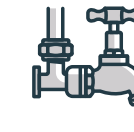
Proven and Guaranteed

More than 1.5 million SharkBite connections are made every week. The leading push-to-connect fitting has now been engineered for new construction and re-pipe applications.



Confidence

No tools and glue significantly reduces the chance of installation error and leaks, which reduces risk of water damage and mold. Minimal learning curve and liability with new laborers.



Efficient Water Delivery

The SharkBite ProLock system is immune to corrosion and mineral build-up for greater water pressure and improved delivery of hot water.



Reliability

25 year system warranty with consequential damage coverage* to provide years of customer satisfaction.



Quality

Constructed with State of the Art polymer materials and an advanced gripping mechanism that utilizes high-quality stainless steel teeth for the strongest connections.



Ease of Installation

No tools allows for ease of installation in tight spaces. Fitting rotation offers the ability to perfectly align the direction of the pipe and provides a professional installation appearance. No minimum spacing requirements between fittings.

*For full warranty details, please visit sharkbite.com

SharkBite ProLock System Comparison

	ProLock	Crimp	Expansion
No tools required to make fitting connection that can cause install error	✓	✗	✗
No calibration/maintenance required for proper function of tool	✓	✗	✗
No grooves in the tubing caused by the expansion tool that can create potential leak paths	✓	✓	✗
No heat gun needed for install in cold conditions	✓	✓	✗
Twist-to-lock indicator marks for assurance of proper fitting connection	✓	✗	✗
High performance polymer with great chemical and chloramine resistance	✓	✓	✓
No potential for leaks caused by nicks on the fitting exterior	✓	✗	✗
Immediate pressure testing	✓	✓	✗
25 Year System Warranty	✓	✓	✓
No rings required for proper fitting connection	✓	✗	✗
Easy install with minimal learning curve for new laborers	✓	✗	✗
Full Flow	✓	✗	✗



Proudly made in the USA, the SharkBite PE-RT system is the next step in providing an advanced potable water system for safe and efficient water delivery throughout the home. We own our manufacturing process from start to finish, so every piece of PE-RT pipe is guaranteed from concept to delivery.

SharkBite PE-RT Pipe
SharkBite PE-RT pipe is a cost-effective piping solution approved for use in both hot and cold plumbing installations. We meet the highest chlorine resistance standards and utilize the most energy-efficient manufacturing processes. SharkBite has a proven record of manufacturing Polyethylene Pipe for the last 35 years with over 12 Billion feet of Pipe installed worldwide.



Benefits of SharkBite® PE-RT



Versatile

SharkBite PE-RT Pipe can be installed in dry or wet conditions. SharkBite PE-RT Pipe can lend itself to many applications due to its physical properties of flexibility, reliability and installation ease such as hydronic heating, fire protection, etc.



Health/Safety

No glue, solder, or solvents required for the connection process, which keeps potentially dangerous chemicals out of plumbing systems. Additionally, SharkBite PE-RT Pipe eliminates the need for open flames in the house that could be a potential fire hazard. There is no risk of copper traces in water from breakdown of pipe that has been linked to heart disease and Alzheimer's.



Proven and Guaranteed

SharkBite has a proven record of manufacturing Polyethylene Pipe for the last 35 years with over 12 Billion feet of Pipe installed worldwide.



Freeze Resistant

SharkBite PE-RT systems are less susceptible to burst in freezing conditions due to the pipe's ability to expand. The outside temperature does not affect installation of SharkBite PE-RT pipe and fittings and can be pressure tested immediately once all connections are made.



Flexibility

Able to bend pipe around corners which removes the need for 45° or 90° elbows in certain situations. SharkBite's new coiling process increases the flexibility of our coiled pipe even more. SharkBite PE-RT Pipe has superior flexibility which makes it compatible with barb, expansion, and push-to-connect fittings.



Chlorine Resistance

SharkBite PE-RT Pipe is tested to the highest level of chlorine resistance standards, testing at 100% chlorine at 140°F.



Cost Effective

SharkBite PE-RT Pipe is substantially more cost effective than Copper pipe—SharkBite PE-RT Pipe costs a third of the price of Copper. SharkBite PE-RT Pipe is a fixed cost as prices don't fluctuate daily like Copper pipe.



Benefits of SharkBite® PE-RT

	PE-RT	Copper	CPVC
No glues, solder, solvents necessary	✓	✗	✗
No health and safety concerns	✓	✗	✗
Freeze Resistance	✓	✗	✗
Flexibility for tight bend radius - less fittings	✓	✗	✗
Efficient time-saving installation	✓	✗	✗
Air testing is an acceptable alternative for pressure testing	✓	✓	✗
Highest Chlorine resistance	✓	✗	✓
No theft concerns	✓	✗	✓
Quiet, eliminates water hammer & noise from fluid transmission	✓	✗	✓
Immune to corrosion, pitting, and mineral build up	✓	✗	✓
Rain and humid condition will NOT affect fitting seal	✓	✓	✗
Cost effective, stable material costs	✓	✗	✓
Retains more heat in hot water lines/resists condensation on cold water lines	✓	✗	✓

SharkBite® ProLock



We offer plumbing solutions for a wide range of applications

SharkBite innovates products that help the plumbing trade perform more productively and profitably. Engineered for quality and efficiency, the portfolio of products provides plumbing solutions for a wide range of applications, including new single-family and multifamily home construction, repiping, remodels and renovations and service and repair work.

ProLock Core Fittings

Tees



Part no	Size	Qty/Pkg
PL0813J6	3/8"	6
PL0816J8	1/2"	8
PL0822J6	3/4"	6
PL0828J3	1"	3

Elbows



Part no	Size	Qty/Pkg
PL0213J6	3/8"	6
PL0216J8	1/2"	8
PL0222J6	3/4"	6
PL02NAJ3	1"	3

Couplings



Part no	Size	Qty/Pkg
PL0113J6	3/8"	6
PL0116MJ8	1/2"	8
PL0116J6	3/4"	6
PL0128J3	1"	3

Reducing Couplings



Part no	Size	Qty/Pkg
PL011613J6	1/2" x 3/8"	6
PL012216J6	3/4" x 1/2"	6
PL012822J3	1" x 3/4"	3

Reducing Elbows



Part no	Size	Qty/Pkg
PL021613J6	1/2" x 3/8"	6
PL022216J6	3/4" x 1/2"	6
PL022822J3	1" x 3/4"	3

Reducing Tees



Part no	Size	Qty/Pkg
PL08222216J3	3/4" x 3/4" x 1/2"	3
PL0822J3	3/4" x 1/2" x 1/2"	3
PL08161622J3	1/2" x 1/2" x 3/4"	3
PL08221622J3	3/4" x 1/2" x 3/4"	3
PL08282822J3	1" x 1" x 3/4"	3

Female Adapters NPS Threads



Part no	Size	Qty/Pkg
PL111622FJ6	1/2" x 3/4"	6
PL1122FJ6	3/4" x 3/4"	6
PL112228FJ6	3/4" x 1"	6
PL1128FJ3	1" x 1"	3

Female Elbow Adapters NPS Threads



Part no	Size	Qty/Pkg
PL0222FJ6	3/4" x 3/4"	6
PL112228FJ3	3/4" x 1"	3

Male Adapters NPT Threads



Part no	Size	Qty/Pkg
PL1116MJ8	1/2" x 1/2"	8
PL111613MJ6	1/2" x 3/4"	6
PL112216MJ6	3/4" x 1/2"	6
PL1122MJ6	3/4" x 3/4"	6
PL112228MJ6	3/4" x 1"	6

ProLock Core Fittings Cont'd

End Cap



Part no	Size	Qty/Pkg
PL013J6	3/8"	6
PL016J8	1/2"	8
PL022J6	3/4"	6
PL028J3	1"	3

Slip Connector



Part no	Size	Qty/Pkg
PL0616J3	1/2"	3
PL0622J3	3/4"	3

Stackable Tees



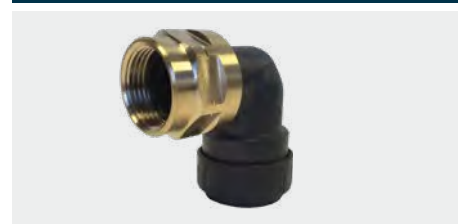
Part no	Size	Qty/Pkg
PL1316J6	1/2" x 1/2" x 1/2"	6
PL13222216J3	3/4" x 3/4" x 1/2"	3
PL1322J3	3/4" x 3/4" x 3/4"	3

Shut-Off Valve



Part no	Size	Qty/Pkg
PLBV16J2	1/2"	2
PLBV22J2	3/4"	2

Brass Female Elbow Adapters NPS Threads



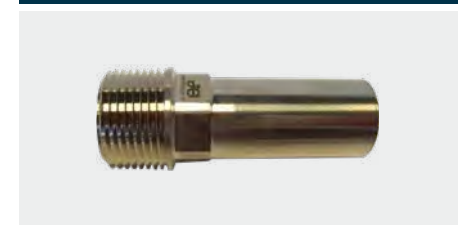
Part no	Size	Qty/Pkg
PL0216BFJ8	1/2" x 1/2"	8
PL0222BFJ6	3/4" x 3/4"	6

Female Connector NPS Threads



Part no	Size	Qty/Pkg
PL11316BFJ6	3/8" x 1/2"	6
PL1116BFJ8	1/2" x 1/2"	8
PL111622BFJ6	1/2" x 3/4"	6
PL112222FJ6	3/4" x 1/2"	6
PL1122FBJ6	3/4" x 3/4"	6
PL1128BFJ3	1" x 1"	3

Brass Male Stem Adapters NPT Threads



Part no	Size	Qty/Pkg
PL1216MJ8	1/2" x 1/2"	8
PL1222MJ6	3/4" x 3/4"	6

PE-RT Pipe & PEX Pipe

Red Pipe Coils



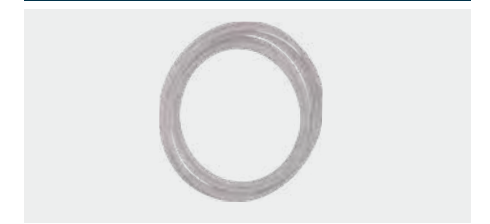
PE-RT Part no	PEX Part no	Size	Length
U960R100	U860R100	1/2"	100'
U960R300	U860R300	1/2"	300'
U970R100	U870R100	3/4"	100'
U980R100	U880R100	1"	100'

Blue Pipe Coils



PE-RT Part no	PEX Part no	Size	Length
U960B100	U860B100	1/2"	100'
U970B100	U870B100	3/4"	100'
U980B100	U880B100	1"	100'
U960B300	U860B300	1/2"	300'

White Pipe Coils



PE-RT Part no	PEX Part no	Size	Length
U960W50	U860W50	1/2"	50'
U970W50	U870W50	3/4"	50'

Red Pipe Sticks



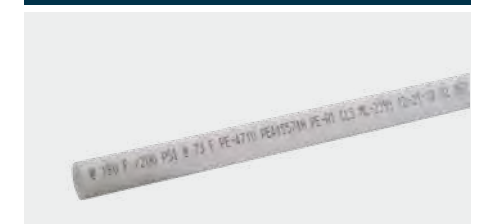
PE-RT Part no	PEX Part no	Size	Length
U960R5	U860R5	1/2"	5'
U960R10	U860R10	1/2"	10'
U970R5	U870R5	3/4"	5'
U970R10	U870R10	3/4"	10'
U980R5	U880R5	1"	5'
U980R10	U880R10	1"	10'

Blue Pipe Sticks



PE-RT Part no	PEX Part no	Size	Length
U960B5	U860B5	1/2"	5'
U960B10	U860B10	1/2"	10'
U970B5	U870B5	3/4"	5'
U970B10	U870B10	3/4"	10'
U980B5	U880B5	1"	5'
U980B10	U880B10	1"	10'

White Pipe Sticks



PE-RT Part no	PEX Part no	Size	Length
U955W5	U855W5	3/8"	5'
U960W5	U860W5	1/2"	5'
U960W10	U860W10	1/2"	10'
U970W5	U870W5	3/4"	5'
U970W10	U870W10	3/4"	10'
U980W10	U880W10	1"	10'

Reclaimed Water PEX Pipe Purple Coils



PEX Part no	Size	Length
U860P100	1/2"	100'
U860P300	1/2"	300'
U870P100	3/4"	100'
U870P300	3/4"	300'
U880P100	1"	100'
U880P300	1"	300'

Oxygen Barrier PEX Pipe Orange Coils



PEX Part no	Size	Length
U855O100	3/8"	100'
U855O300	3/8"	300'
U855O500	3/8"	500'
U860O100	1/2"	100'
U860O300	1/2"	300'
U860O500	3/4"	100'
U860O1000	3/4"	300'
U865O300	1"	100'

Oxygen Barrier PEX Pipe Cont'd Orange Sticks



PEX Part no	Size	Length
U870O100	1"	300'
U870O300	3/8"	100'
U870O500	3/8"	300'
U870O1000	3/8"	500'
U880O100	1/2"	100'
U880O300	1/2"	300'
U880O500	3/4"	100'

PE-RT & PEX Pipe Accessories

PE-RT & PEX Accessories



Part no	Description
UFH034	PE-RT Decoiler
U701	Pipe Cutter 1/4"-1"
23369	Pipe Cutter 1/2"-1"

PE-RT & PEX J-Hooks



Part no	Size
23065	3/8"
23220	1/2"
23221	3/4"

PE-RT & PEX Insulated Suspension Clamp



Part no	Size	Jar Qty
23071A10	1/2"	10 Pack
23072A10	3/4"	10 Pack
23073A10	1"	10 Pack

PE-RT & PEX Insulators



Part no	Size	Jar Qty
23074A10	1/2"	10 Pack
23075A10	3/4"	10 Pack
23076A10	1"	10 Pack

PE-RT & PEX Bend Supports



Part no	Size
23050	1/2" Polymer with mounting bracket
23051	3/4" Polymer
23053	1/2" Metal
23054	3/4" Metal

Pressure Regulating Valves

EB45 Direct SharkBite



Part no	Size
23807-0045	1/2"
24383-0045	1/2" Slip Feature
23808-0045	3/4"
24384-0045	3/4" Slip Feature
22675-0045	1"

EB45 Double Union SharkBite



Part no	Size
23893-0045	1/2"
23894-0045	3/4"
23896-0060	3/4" (60 psi setting)
24449-0045	3/4" w/ Gauge Port
23358-0045	1"
23945-0060	1" (60psi setting)

EB25 Double Union SharkBite



Part no	Size
23955-0045	3/4"
23956-0045	1"

Thermostatic Mixing Valves

Tank Booster Pro

ASSE 1017, 1070 & CSA B 125.3



Part no	Size
24639	3/4" Corrugated
24832	3/4" Braided
24643	3/4" Corrugated, temperature gauge
24644	3/4" Braided, temperature gauge

HG110-D

ASSE 1017, 1069 & CSA B 125.3, Distribution & in-line



Part no	Description
24548	1/2" w/ Integrated SharkBite Connections
24549	3/4" w/ Integrated SharkBite Connections
24504	1/2" w/ SharkBite connections
24505	3/4" w/ SharkBite connections

HG160 with SharkBite Connections

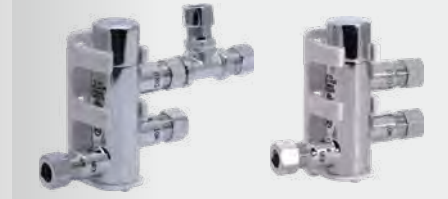
ASSE 1069, 1070 & CSA B 125.3 in-line



Part no	Size
24529	1/2"
24530	3/4"

HG135 with Compression Connections

ASSE 1017, 1070 & CSA B 125.3



Part no	Size
25686	3/8"
25687	3/8" Tee

Chrome finish. Mounting bracket & hardware, and inlet strainer included.

HG145 with Compression Connections

ASSE 1070 & CSA B 125.3



Part no	Size
25424	3/8"
24525	3/8"

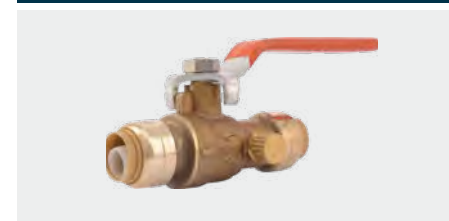
Ball Valves & Check Valves

Ball Valve



Part no	Size
22222-0000LF	1/2" x 1/2"
22185-0000LF	3/4" x 3/4"
22223-0000LF	1" x 1"

Ball Valves with Drain Vent



Part no	Size
22304-0000LF	1/2" x 1/2" x 1/8" NPSM Drain Thread
22305-0000LF	3/4" x 3/4" x 1/8" NPSM Drain Thread
22306-0000LF	1" x 1" x 1/8" NPSM Drain Thread

Ball Valve with Drain Vent with Mounting Bracket



Part no	Size
24615-0000LF	1/2" x 1/2"
24616-0000LF	3/4" x 3/4"
24617-0000LF	1" x 1"

Ball Valves & Check Valves Cont'd

Slip Ball Valves



Part no	Size
24735LF	1/2" x 1/2"
24736LF	3/4" x 3/4"
24737LF	1" x 1"

Check Valves



Part no	Size
U2008-0000LF	1/2" x 1/2"
U2016-0000LF	3/4" x 3/4"
U2020-0000LF	1" x 1"

General Service Valves

Gate Valves with Drain



Part no	Size
24634LF	1/2" x 1/2"
24635LF	3/4" x 3/4"

Hose Bibbs - 90 Degree



Part no	Size
24620LF	1/2" x 3/4" MHT Quarter Turn
24621LF	3/4" x 3/4" MHT Quarter Turn
24626LF	1/2" x 3/4" MHT Multi-Turn
24627LF	3/4" x 3/4" MHT Multi-Turn

Hose Bibbs - 45 Degree



Part no	Size
24630LF	1/2" x 3/4" MHT Quarter Turn
24631LF	3/4" x 3/4" MHT Quarter Turn
24632LF	1/2" x 3/4" MHT Multi-Turn
24633LF	3/4" x 3/4" MHT Multi-Turn

Garden Valves



Part no	Size
24622LF	1/2" x 3/4" MHT
24623LF	3/4" x 3/4" MHT

Anti-Siphon Frost Free Sillcocks



Part no	Size
24628LF	1/2" x 3/4" MHT 8"
24629LF	1/2" x 3/4" MHT 10"
24636LF	1/2" x 3/4" MHT 12"
24637LF	1/2" x 3/4" MHT 15"
24638LF	1/2" x 3/4" MHT 18"

Water Heater Connectors & Softeners

Braided Water Heater Connectors Stainless Steel



Part no	Size	Length
U3068FLEX12LF	1/2" x 3/4" FIP	12"
U3068FLEX15LF	1/2" x 3/4" FIP	15"
U3068FLEX18LF	1/2" x 3/4" FIP	18"
U3068FLEX24LF	1/2" x 3/4" FIP	24"
U3088FLEX12LF	3/4" x 3/4" FIP	12"
U3088FLEX15LF	3/4" x 3/4" FIP	15"
U3088FLEX18LF	3/4" x 3/4" FIP	18"
U3088FLEX24LF	3/4" x 3/4" FIP	24"

Corrugated Water Heater Connectors Stainless Steel



Part no	Size	Length
SS3088FLEX18LF	3/4" x 3/4" FIP	18"
SS3088FLEX24LF	3/4" x 3/4" FIP	24"
SS3086FLEX24LF	3/4" x 1" FIP	24"

Braided Water Heater Connectors Stainless Steel with Ball Valve



Part no	Size	Length
U3068FLEX18BVLVLF	1/2" x 3/4" FIP	18"
U3088FLEX18BVLVLF	3/4" x 3/4" FIP	18"

Corrugated Water Heater Connectors Stainless Steel with Ball Valve



Part no	Size	Length
SS3068FLEXBVLVLF	1/2" x 3/4" FIP	18"
SS3088FLEXBVLVLF	3/4" x 3/4" FIP	18"

Braided Water Coupling Hose Stainless Steel



Part no	Size	Length
U3008FLEX18LF	1/2" x 1/2"	18"
U3016FLEX18LF	3/4" x 3/4"	18"

Braided Water Coupling Hose Stainless Steel



Part no	Size	Length
U3008FLEX18LF	1/2" x 1/2"	18"
U3016FLEX18LF	3/4" x 3/4"	18"

Braided Water Softener Connector



Part no	Size
U3086FLEX24LF	3/4" x 1" / 24"

Water Softener Fittings



Part no	Size
U086LF	3/4" x 1" FIP

Supply Stop Valves

Angle Stops



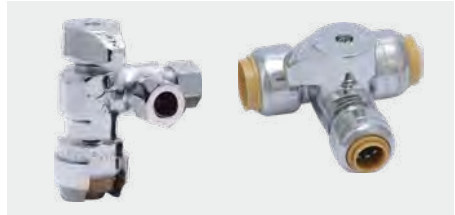
Part no	Size
23036-0000LF	1/2" x 3/8" Comp
23048-0000LF	1/2" x 1/4" (3/8" OD)
23336-0000LF	1/2" x 1/4" Comp
24946	1/2" x 1/2" MIP

Straight Stops



Part no	Size
23037-0000LF	1/2" x 3/8" Comp
23049-0000LF	1/2" x 1/4" (3/8" OD)
23337-0000LF	1/2" x 1/4" Comp
24947	1/2" x 1/2" MIP

Tee and Dual Stops



Part no	Size
24983	1/2" x 1/2" x 1/4" Comp
24984	1/2" x 1/2" x 3/8" Comp
24985	3/4" x 3/4" x 1/4" Comp
24986	3/4" x 3/4" x 3/8" Comp
24987	1/2" x 1/2" x 1/4" (3/8" OD)
25558LF	1/2" x 3/8" x 3/8" Comp

Installation Kits & Accessories

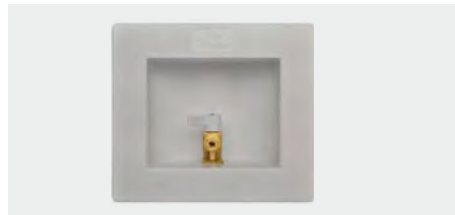
Water Heater Installation Kits

Includes 2 SharkBite Connectors & Disconnect Clip



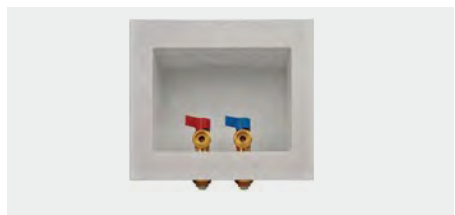
Part no	Size
24680	3/4" x 3/4" / 18"

Ice Maker Outlet Box Kits



Part no	Size
25096	1/2" x 1/4" Comp
25097	1/2" x 1/4" Comp with water hammer arrestor

Washing Machine Outlet Box Kits



Part no	Size
25098	1/2" x 3/4" MHT
25099	1/2" x 3/4" MHT with water hammer arrestors

Tankless Water Heater Kit



Part no	Size
25374	3/4"

Click Seal® Faucet Supply Line



Part no	Size	Length
24657	1/2" x 1/2"	20"

Click Seal® Toilet Supply Line



Part no	Size	Length
24656	1/2" x 7/8"	12"

Installation Kits & Accessories Cont'd

Installation Kits



Part no	Description
25024	Ice Connector with Angle Stop
25567	Shower & Tub Kit
25561	3/4" Water Filter Kit
24662	1" Water Filter Kit

Deburr & Gauge Tool



Part no	Size
U702	1/4", 3/8", 1/2", 5/8", 3/4", 1"

Use for copper and CPVC pipe.

Disconnect Clips



Part no	Size
U706	1/4"
U708	3/8"
U710	1/2"
U3712	5/8"
U714	1"

Disconnect Tongs



Part no	Size
U711	1/2"
U713	3/4"
U715	1"

Wrap for Fitting Burial

Silicone Wrap



Part no	Size
25406	10' x 2" x .02

Radiant Fittings

Couplings & Adapters



Part no	Size
U012	5/8" x 5/8"
U057	3/4" x 5/8" Reducing
U126	5/8" x 3/4" MNPT Reducing Adapter

Elbows



Part no	Size
U252	5/8" x 5/8"
U273	3/4" x 5/8"

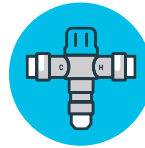
Tees & End Stop



Part no	Size
U366	5/8" x 5/8" x 5/8" Tee
U516	5/8" End Stop

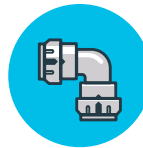
SharkBite ProLock & PE-RT System

A Revolutionary Plumbing System from the Meter to the Fixture without Tools



Cash Acme HG110D

Point-of-use and point-of-source temperature actuated mixing valve that delivers tempered water at a controlled temperature.



SharkBite ProLock

The push-to-connect fitting designed for SharkBite PE-RT & PEX Pipe Systems.



SharkBite PE-RT Pipe

Versatile, flexible, and durable PE-RT Pipe for residential hot and cold water applications. Made in the USA.



Washing Machine/Ice Maker Outlet Boxes

Outlet boxes with SharkBite push-to-connect fittings allow for quick and easy installation of appliances. Available with or without water hammer arrestor.



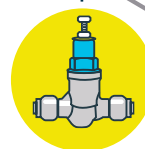
Water Heater Connector Hoses

Eliminates the need for additional transition fittings with push-to-connect design for quick and easy installation. Offered in braided or corrugated stainless steel.



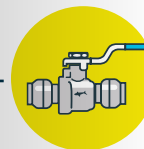
Cash Acme Tank Booster Pro

Easy to install water heater mixing valve that mixes hot water with cold to deliver tempered water at 120°F (49°C). Increases usable hot water capacity by up to 100%.



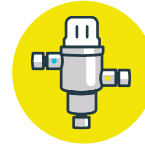
Cash Acme EB45

Half cartridge design with SharkBite connections that offers the performance of a high end cartridge based valve. Offers the simplicity and maintenance benefits of a traditional pressure regulating valve.



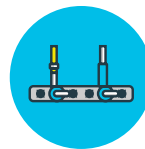
Ball Valves

Convenient single lever control makes it easy to use and encourages shut-off of water supply. Can be rotated after assembly for easier installation in tight spaces.



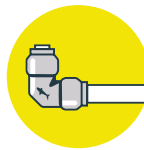
Cash Acme HG145 & HG135

Point-of-use thermostatic mixing valve designed to assist in the prevention of scalding. Compact design easily fits under or behind a single basin. Made in the USA.



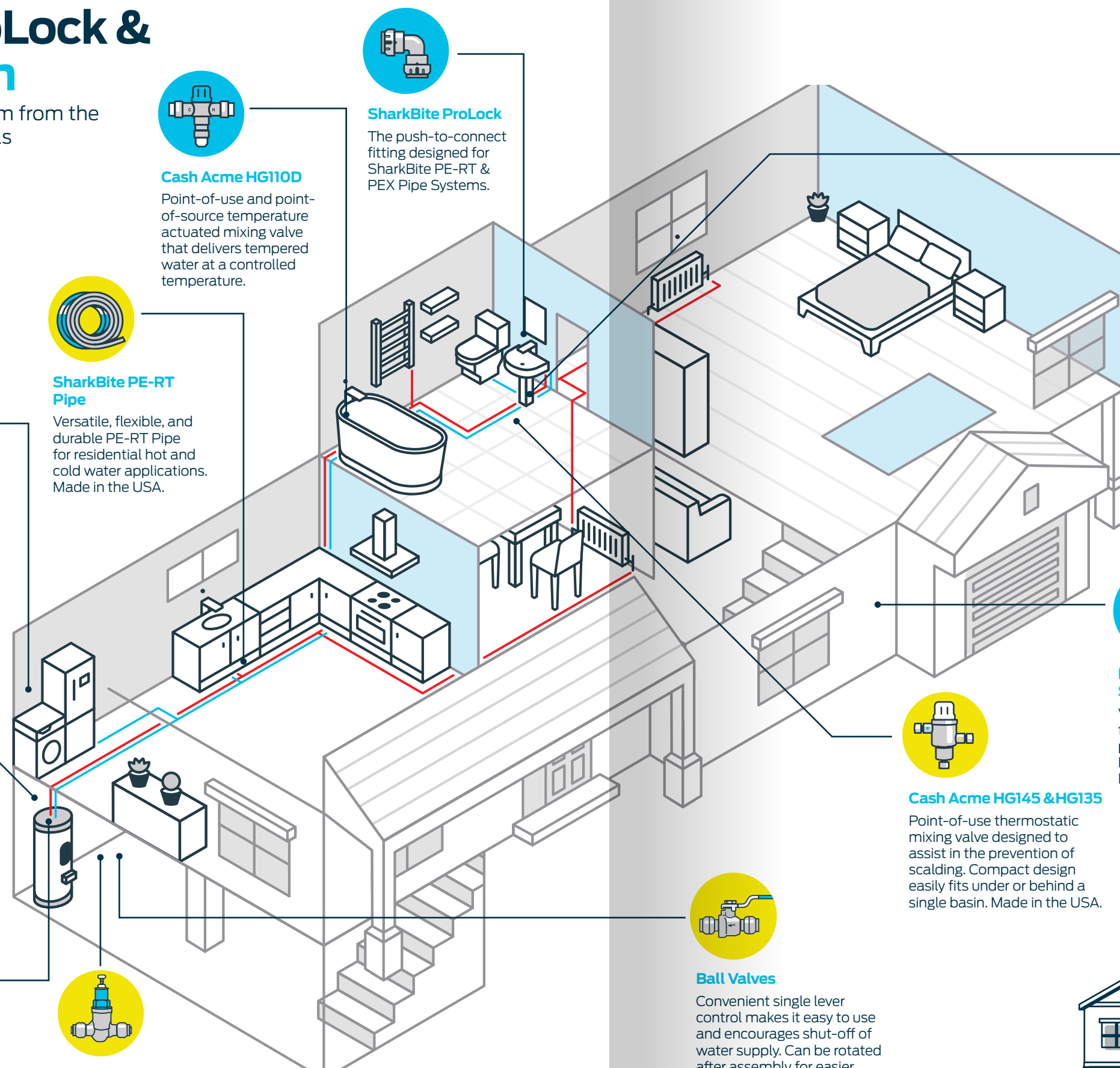
HoldRite Pipe Supports & Brackets

Versatile brackets ideal for sink, lavatory & toilet plumbing solutions. Minimized concealed joints. No flames required.



Stub-Outs

Allows plumbing to be roughed in, dry wall hung, and painted. Optional integrated bracket attached to stub-out for stud or support bracket.





SharkBite Wants To Reward You

Contractor Rewards is our way of saying thanks for being a loyal customer. It's a loyalty program that rewards contractors like yourself by allowing you to earn rewards points from your SharkBite and Cash Acme purchases, as well as from purchase with other leading manufacturers. Simply enroll online at ContractorRewards.com and submit your invoices when you purchase SharkBite or Cash Acme products. Once enrolled, you will be able to check your point's balance, view eligible products and use your points to shop for rewards.

Limited Warranty

SharkBite®, Cash Acme®, HoldRite®, John Guest® Products

What does this warranty cover?

Subject to conditions outlined in this statement, RWC (in the USA, Reliance Worldwide Corporation and in Canada, Reliance Worldwide Corporation (Canada) Inc.) warrants to owners of real property in the United States and Canada that SharkBite and Cash Acme products, when used and installed in accordance with the requirements set forth, shall be free from defects in material and workmanship for the applicable Warranty Period. This Limited Warranty is in effect for installations made after January 1, 2018 and is applicable to products installed in the country in which they were purchased.

Proof of purchase is required to validate the Warranty Period. If proof of purchase is not available, the Warranty Period commencement shall default to the date of manufacture for each product. If the product suspected of a defect does not have a clear date of manufacture on it, a proof of purchase will be required.

What are the conditions of this warranty?

1. All products must be installed in accordance with all then applicable codes, good plumbing practice, in accordance with any local, state, provincial or federal requirements, and installed in a potable water or radiant heating application unless a non-potable water service is specifically allowed for in the pertinent product literature.
2. The installer must use construction techniques compliant with then applicable codes to install the product and use the product within the design parameters specified in any installation guidelines and technical notes for the applicable system. This shall include field pressure testing prior to concealing with concrete or by other means and wrapping any brass fitting when buried. Failure to install RWC products according to manufacturer's installation instruction will void all applicable warranties and may result in severe water damage.
3. Products must at all times be used in a manner consistent with their intended use and be used in installations and environments acceptable to their material and design specifications, including not being installed in a system that may operate at temperatures or at pressures that exceed the approved ratings which can be found on the product, packaging or installation instructions.
4. Additional product specific conditions of this Limited Warranty and the Warranty Period are documented in the section entitled "HOW LONG DOES THE LIMITED WARRANTY COVERAGE LAST AND WHAT OTHER SPECIFIC CONDITIONS EXIST FOR EACH PRODUCT?".
5. Without limiting the foregoing, this Limited Warranty does not apply and you do not have a right of reimbursement if the product failure or resulting damage is caused by: (a) evidence of tampering, mishandling, neglect, abuse, accidental damage, freeze damage (it is expressly understood that failure as a result of any freezing fluids within the pipes does not constitute a defect in material or workmanship and shall not be covered by this warranty) or unauthorized modifications or repairs that cause damage to warranted products; (b) exposure to harmful, unauthorized, or unanticipated chemicals or substances or corrosive water conditions; (c) exposure to ultraviolet light; (d) faulty installation including failure to follow proper burial instructions; (e) damage from abnormal operating conditions including exposure pressures and temperatures beyond the specified operating range; (f) failure to properly test and pass common testing methods (including pressure testing) after the installation and before the product or system is put in service; (g) components not manufactured or sold by RWC; or (h) acts of nature such as earthquakes, fire, flood or lightning.
6. Although RWC provides a plumbing system to facilitate a complete installation, other manufacturers pipe and/or fittings may be installed in any given installation provided manufacturing of the pipe and/or fittings demonstrates compliance with the applicable ASTM/CSA standards, and the product has been certified by a recognized third-party testing agency. The RWC product in the given installation will continue to be covered under this Limited Warranty although limits on Warranty Period may apply. RWC will be responsible only for proven defects in material or workmanship in RWC products. Problems in products manufactured by another company should be reported to that manufacturer.

How do you get service?

In order to be eligible for service under this Limited Warranty you must return the defective product to RWC for inspection and testing within thirty (30) days after detection of alleged failure or defect occurring within applicable Warranty Period (with shipping charges prepaid) to the original place of purchase. If the alleged defect involves a connection or joint with a RWC product, the fitting must be returned with a

section of the pipe still inserted. You must include the model number of the product (if available), the original date of purchase, proof of purchase and the nature of the alleged product failure or defect. Products returned without shipping charges prepaid will be refused. For questions or inquiries, in the U.S. call 1(877)700-4242 and in Canada 1(888)820-0120.

What will RWC do?

If, after inspection, we find that a product covered by this Limited Warranty has failed due to a defect in material or workmanship during the specified Warranty Period, we will repair or replace, at our sole option, free of charge, the defective product during normal working hours and through a place of business as determined by RWC.

Notwithstanding anything to the contrary in this Limited Warranty, if RWC determines that any damages to the real property in which a defective product was installed were the direct result of a leak or failure caused by a defect in material or workmanship in any RWC product covered by this Limited Warranty and occurring within the first ten years after date of purchase or during the applicable Warranty Period, whichever is shorter, and if reasonable steps were taken to promptly limit or stop the effects of such leak or failure as soon as it was discovered, then RWC will reimburse the property owner for the reasonable costs of repairing or replacing such damaged real property to include flooring, drywall and painting and other real property damaged by the leak directly caused by the allegedly defective RWC product when the RWC SharkBite Connection System product was installed by a licensed professional plumbing contractor. Except as specified above or otherwise specifically authorized in writing by RWC, RWC shall not pay for any costs or expenses for transportation, relocation, labor, repairs or any other work associated with removing and/or returning failed or defective products or installing replacement products.

This shall constitute the sole and exclusive remedy for any defective product.

What does this limited warranty not cover?

RWC shall not be responsible for any other incidental, indirect, contingent, special or consequential damages, including without limitation, economic loss, lost profits or the cost of repairing or replacing other property which is damaged if these warranted products do not work properly, other costs resulting from labor charges, delays, vandalism, negligence, fouling caused by foreign material, damage from adverse water conditions, adverse chemical environments, or

any other circumstances over which RWC has no control. This limitation applies even if RWC could have foreseen or has been advised of the possibility of these damages. This Limited Warranty shall be invalidated by any abuse, misuse, misapplication or improper installation of the product. Any remaining warranty coverage may not be assigned or transferred after the period ending ten years following the installation. RWC does not guarantee or in any way warrant the integrity or workmanship of the contractor/installer.

Miscellaneous

Some States/Provinces do not allow limitations on how long an implied warranty lasts, and some States/Provinces do not allow the exclusion or limitation of incidental or consequential damages. Therefore, the above limitations may not apply to you. This Limited Warranty gives you specific legal rights, and you may have other rights that vary from State/Province to State/Province. You should consult applicable State/Provincial laws to determine your rights.

SO FAR AS IS CONSISTENT WITH APPLICABLE STATE/PROVINCIAL/FEDERAL LAW, THE EXPRESS WARRANTY SET FORTH HEREIN IS THE ONLY WARRANTY GIVEN BY RWC WITH RESPECT TO THE SHARKBITE® AND CASH ACME® PRODUCTS AND RWC MAKES NO OTHER WARRANTIES, EXPRESSED OR IMPLIED, AND HEREBY SPECIFICALLY DISCLAIMS ALL OTHER WARRANTIES, EXPRESSED OR IMPLIED, INCLUDING BUT NOT LIMITED TO THE IMPLIED WARRANTIES OF MERCHANTABILITY AND FITNESS FOR A PARTICULAR PURPOSE.

This Limited Warranty and any claims arising from breach of contract, breach of warranty, tort, or any other claim arising from sale or use of RWC's products shall be governed and construed under the laws of the State of Georgia. No action on the part of RWC under this Limited Warranty shall be construed as an admission of liability of that the product is not fit for its intended use.

How long does the limited warranty coverage last and what other specific conditions exist for each product?

Classification	Product Category	Limited Warranty Period	Conditions
SharkBite Connection Systems	SharkBite Brass and Poly PEX Barb Fittings in conjunction with SharkBite PEX Pipe and SharkBite Rings/Clamps	Twenty-Five (25) Years	Must be used with <ul style="list-style-type: none"> • SharkBite PEX Pipe - ASTM F876/CSA B137.5 • SharkBite Copper Crimp Rings – ASTM F1807 or F2159 • SharkBite Stainless Steel Clamp Rings – ASTM
	SharkBite EvoPEX Fittings in conjunction with SharkBite PEX Pipe	Twenty-Five (25) Years	Must be used with SharkBite PEX Pipe - ASTM F876/CSA B137.5
	SharkBite Universal Push-To-Connect Fittings in conjunction with SharkBite PEX Pipe	Twenty-Five (25) Years	Must be used with SharkBite PEX Pipe - ASTM F876/CSA B137.5
SharkBite, Cash Acme, HoldRite, and John Guest Products	SharkBite Universal Push-To-Connect Fittings in Application with Copper, PEX, CPVC and/or PE-RT	Twenty-Five (25) Years	Must be used with: <ul style="list-style-type: none"> • Copper–ASTM B 88 hard drawn copper tube K, L, and M • PEX–ASTM F876/CSA B137.5 • CPVC–ASTM D2846 or CSA B137.6
	SharkBite Universal Push-To-Connect Fittings in Application with HDPE	Five (5) Years	Must be used with HDPE SDR-9 ASTM D2737
	SharkBite Accessories (Ball Valves, Supply Hoses, Supply Stops, Supply Valve Box Systems, Kits, Copper Manifolds, etc.)	Two (2) Years	Must be installed per installation instructions with the pipes below: <ul style="list-style-type: none"> • Copper–ASTM B 88 hard drawn copper tube K, L, and M • PEX–ASTM F876/CSA B137.5 • CPVC–ASTM D2846 or CSA B137.6 • PE-RT–ASTM F2769
	SharkBite ProLock	Twenty-Five (25) Years	Must be used with: <ul style="list-style-type: none"> • SharkBite PEX – ASTM F876/CSA B137.5 • SharkBite PE-RT – ASTM F2769
	SharkBite Poly PEX Barb Fittings	Five (5) Years	When used with Non-SharkBite PEX Pipe that conform to ASTM F876 CSA B137.5, PE-RT that conform ASTM F2769, and Clamp/Rings ASTM F2159
	SharkBite Brass PEX Barb Fittings/ Copper Manifold	Five (5) Years	When used with Non-SharkBite PEX Pipe that conform to ASTM F876/CSA B137.5, that conform ASTM F2769 and Clamp/Rings – ASTM F1807
	SharkBite EvoPEX Fittings	Five (5) Years	When used on Non-SharkBite PEX Pipe that conform to ASTM F876/CSA B137.5
	SharkBite PEX Pipe	Twenty-Five (25) Years	When used with Fitting and Clamps/Rings that conform to ASSE 1061, ASTM F1807, ASTM F2098, and/or ASTM F2159 Fittings
	SharkBite PE-RT Pipe	Twenty-Five (25) Years	When used with Fitting and Clamps/Rings that conform to ASSE 1061, ASTM F1807, ASTM F2098, and/or ASTM F2159 Fittings
	SharkBite Home Run Manifolds	Ten (10) Years	Must be installed per installation instructions
	SharkBite Tools	One (1) Year	From date of purchase
	SharkBite and Cash Acme Thermostatic Mixing Valves	Five (5) Years	Must be installed per installation instructions
	Other SharkBite and Cash Acme Valves	Two (2) Years	Must be installed per installation instructions
	John Guest Black Click-to-Lock CTS Fittings	Twenty-Five (25) Years	Must be used with: <ul style="list-style-type: none"> • Copper–ASTM B 88 hard drawn copper tube K, L, and M • PEX–ASTM F876/CSA B137.5 • CPVC–ASTM D2846 or CSA B137.6
	John Guest Speedfit Twist & Lock CTS Fittings	Twenty-Five (25) Years	Must be used with: <ul style="list-style-type: none"> • Copper–ASTM B 88 hard drawn copper tube K, L, and M • PEX–ASTM F876/CSA B137.5
	John Guest Fluid System OD Fittings	One (1) Years	Must be used with Polyethylene, Nylon, PEX, or Soft Copper (must be round and in good condition)
	SharkBite Quick-Connect POM Plastic Fittings	One (1) Years	Must be used with Polyethylene, Nylon, PEX, or Soft Copper (must be round and in good condition)
	HoldRite Products	One (1) Years	Must be installed per installation instructions
	HoldRite QuickBrand Products	One (1) Years	Must be installed per installation instructions
	HoldRite Testrite	One (1) Years	Must be installed per installation instructions
HoldRite HydroFlame Pro	Two (2) Years	Must be installed per installation instructions	





For more information, visit
sharkbite.com

Connect with us



Return Goods Policy

No material shall be returned without expressed written approval from RWC. All returns must be accompanied by a RGA number as assigned by RWC. Any returned item not identifiable by this number is subject to rejection of applied credit. Where credit is issued, it will be at original invoice price or current price if lower, less all applicable handling charges and restocking fees. Returns must be submitted within 30 days of original invoice unless otherwise agreed upon in writing. All returned material must be in original packaging and sellable condition.