



## **Southhaven®** 33" top-mount single-bowl kitchen sink **37047-3**

### **Features**

- Three faucet holes
- 9-1/4" depth provides generous workspace
- 3-5/8" (92 mm) drain opening
- Stainless steel with luster bowl finish and a satin deck finish

### **Material**

- Premium 18-gauge stainless steel

### **Installation**

- Top-mount

### **Recommended Products/Accessories**

7400 Stainless Steel Sink Drain and Strainer  
K-23726 Drain treatment  
K-23729 Stainless steel cleaner

### **Included Components**

1150001 Installation Clips



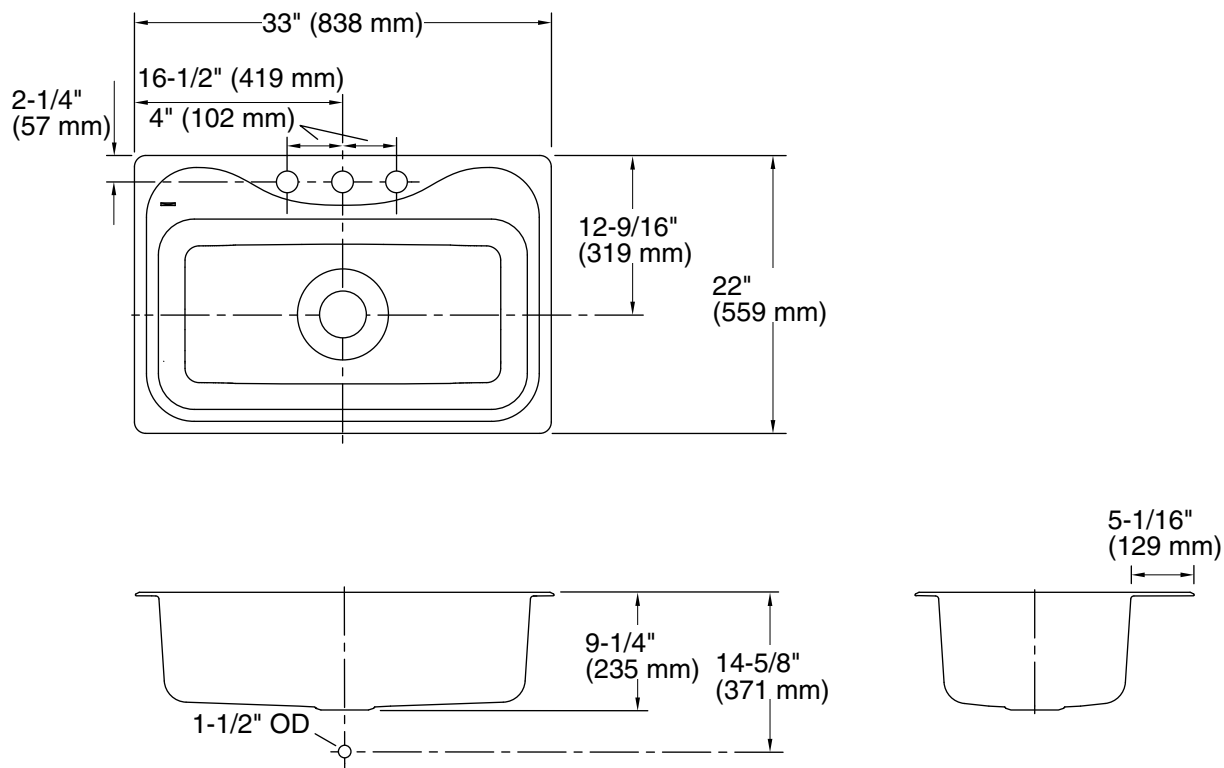
### **Codes/Standards**

ASME A112.19.3/CSA B45.4  
IAPMO Certification

### **STERLING® Stainless Steel Sinks**

#### **Lifetime Limited Warranty**

See website for detailed warranty information.



### Technical Information

All product dimensions are nominal.

Bowl configuration: Single

Min. base cabinet width: 36" (914 mm)

Bowl area (Only): Length: 29-1/4" (743 mm)  
Width: 15" (381 mm)  
Bowl depth: 9-1/4" (235 mm)  
Water depth: 9" (229 mm)

Number of deck holes: 3

Faucet hole(s): 1-7/16" (37 mm)

Drain hole: 3-5/8" (92 mm)

Template: 1032929-7, not required, not included

### Notes

Install this product according to the installation instructions.

Measure your actual product for roughing-in details.