

## STANLEY® BIN #2 BONUS SET WITH HANGERS

- Set includes 8 small storage bins.
- Hangers allow bins to hang on wall for easy access.
- Bins can be stacked or nested.
- Tools and accessories not included.



Product #	Weight	Length	Width	Height
057208R	1.39 lbs (0.630 kg)	6-1/2 in (165 mm)	4-1/8 in (105 mm)	13-1/2 in (343 mm)

## STANLEY® BIN #3 BONUS SET WITH HANGERS

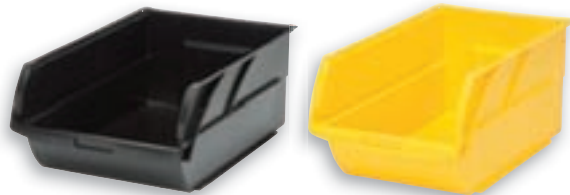
- Set includes 4 medium-size storage bins with hangers.
- Hangers allow for hanging of bins on wall for easy access.
- Bins can be stacked or nested.
- High-impact, polypropylene construction.
- Tools and accessories not included.



Product #	Weight	Length	Width	Height
057304R	1.42 lbs (0.644 kg)	9-3/8 in (238 mm)	5-17/20 in (149 mm)	12-5/8 in (321 mm)

## STANLEY® BINS

- Bins can be stacked or nested.
- Suitable for storing small parts or tools.
- Wide mouth design for easy access to contents.
- High-impact, polypropylene construction.



Product #	Weight	Length	Width	Height
056400L	0.79 lbs (0.358 kg)	12-3/4 in (324 mm)	7-4/5 in (195 mm)	6-1/12 in (155 mm)
056500L	1.41 lbs (0.640 kg)	18-1/4 in (463 mm)	12 in (305 mm)	7-1/8 in (181 mm)

## STANLEY® FATMAX® ADJUSTABLE LEG SAWHORSE

- Each leg adjusts separately, allowing the sawhorse to stand on uneven surfaces.
- Rubber inserts for stability.
- High-quality, sturdy polypropylene and aluminum legs.
- Unique slide mechanism, providing for easy, smooth adjustment.



Product #	Weight Capacity	Weight	Length	Width	Height
011031S	2500 lbs (per pair)	10.45 lbs (6.742 kg)	27-1/4 in (692 mm)	2 in (51 mm)	32 - 39 in (812 - 990 mm)

