

2021 Edition



READING TECHNOLOGIES, INC.

AUTOMOTIVE REFINISH PRODUCT LINE



(800) 521-9200



www.rti-pbe.com



@RTiPBE



@rti_pbe

Why RTi?

Reading Technologies, Inc. has been at the forefront of advanced air system technology since 1986. Our innovations include compressor room desiccant and refrigerated dryers, mainline separators/coalescers, point-of-use dryers, and filter/regulator/lubricator units. Below is an explanation of how RTi uses its patented Inverse-Flow® Technology to give you the best clean, dry air for your painting needs.

The RTi brand prides itself on providing clean, dry air. Do you have specific requests? We build around your custom need. Call us to find out more: (800) 521-9200, or visit our website at www.rti-pbe.com.

INVERSE-FLOW® TECHNOLOGY

1 Centrifugal Spinning

Water, dirt, and oil contaminants are spun in a downward circular motion through the air. The spinning action forces heavy particles outward, towards the drain.

2 Final Filter Media

Our elements are composed of interwoven cotton, polyester, and stainless steel. The filter captures excess sub-micron water droplets. Cotton holds the water particles and allows them to re-enter the air stream as harmless vapor. *Filtration to 1.0 micron.*

3 Stainless Steel Element

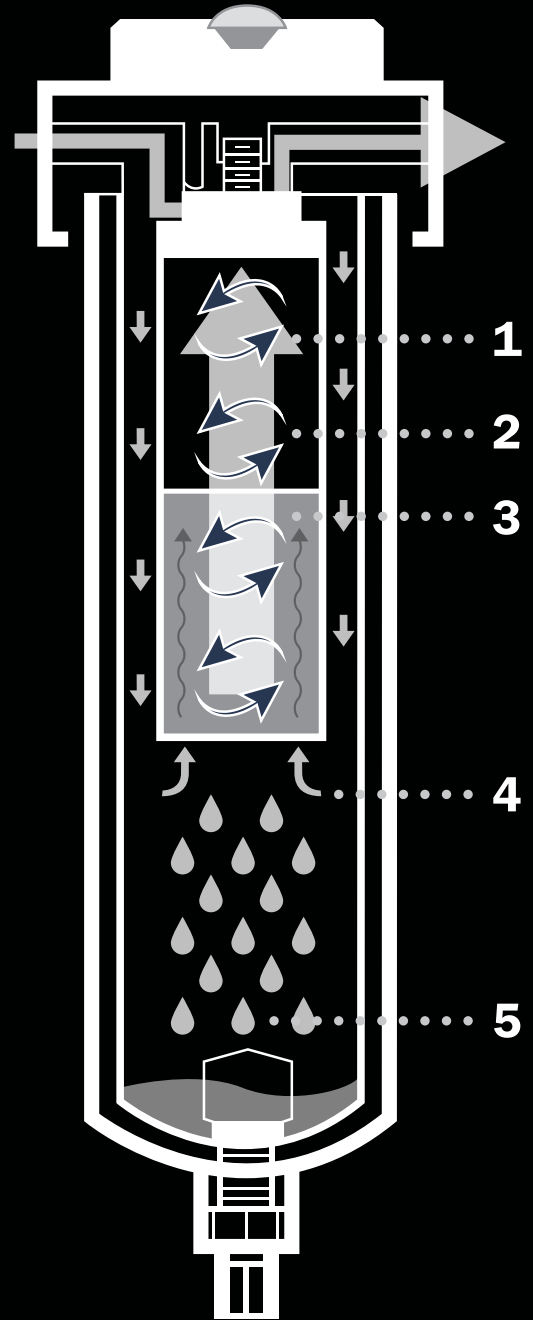
Pre-cleaned air enters a filter media composed of finely interwoven stainless steel mesh wires. The striated surface efficiently holds aerosols and liquid droplets, which then fall into the drain area. *Filtration to 3.0 micron.*

4 Inverse-Flow®

RTi's Inverse-Flow® process creates a condition where the air, spinning in a downward circular motion, changes direction 180° and begins to flow vertically upward. The contaminants are not capable of reversing direction and must separate from the air flow. This process prevents re-entrainment of contamination, which can occur in other filter systems.

5 Bowl and Drain Options

Bowls—metal or polycarbonate with metal guards.
Drains—automatic float, manual, zero loss, or electronic.



On The Cover:

The cover image of this catalog features the Lucky No. 6 custom motorcycle painted by RTi sponsored artist Luckystrike Designs. The motorcycle was built by Don Fritz and Jeremy Seanor and is owned by Jeremy Seanor. The motorcycle is a 2019 Harley Davidson Roadglide. Photo credit: John Jackson of Not Stock Photography. @luckystrike_designs | Luckystrikedesigns.com. If interested in Luckystrike Designs paint work, please call at 724-454-1196.

CA PROPOSITION 65 WARNING



WARNING: Cancer and Reproductive Harm

www.P65Warnings.ca.gov/product

Table of Contents

Booth Products	4
Perfect Air® Systems	4
Perfect Air® System Add-ons	5
Eliminator® II Series	6
Booth Products	7
Mainline Products	8
Twin Tower Desiccant Systems/Mainline Accessories	8
HD and Precision Regulators	9
Modular Blue Piping	10
Rotary Screw Compressors	12
Piston Compressors	13
Eliminex®/Eliminex® Combo Series/Coalescers	14
Cycling/Non-cycling Refrigerated Dryers	15
Shop Layout	16
BRAD Systems	18
Breathing Air Systems	18
Breathing Air Systems Kits	19
DIY Tool Savers/Spray Applications	20
STEALTH Units	20
F/FR Series/MD4/Shop Hoses and Quick Disconnects	22
Rebuild/Upgrade Kits	23
Perfect Air® Maintenance/Rebuild Kits	23
Rebuild/Upgrade Kits/Accessories	24
Accessories	25
Filter Comparison/Air Line Contamination	26
Air Audit Sheet	27

****Corresponding Literature Sheets listed under items can be found on RTI's website: www.rti-pbe.com****

Booth Products

Perfect Air® Systems

Systems that provide consistently flawless finishes for waterborne and solvent base paints.

Features

- Consistent -40° dew point to the gun
- For HVLP and conventional spray guns
- No upstream dryer required
- Self regenerating desiccant dryer requires less routine maintenance
- Change desiccant every 3-5 years
- Faster cure times - increased production
- Quiet operation
- Easy wall mount design with non-corrosive aluminum towers
- Eliminates dieback, cloudiness in clear finish, and more with 3% or less compressed air humidity (CAH) achieved



PERF-25

One painter desiccant dryer.

Replacement Elements:

- 1st stage: 3P-060
- 2nd stage: 3C-060
- 3rd stage: 3C-060

Available Kits:

- PERF-25-MK (elements only)
- PERF-25-RK (elements, desiccant, and fittings)
- PERF-25-TC (pre-packed desiccant towers and fittings)
- PERF-25-TCMK (elements, pre-packed desiccant towers, and fittings)

Literature Sheets: A042, A046, A047



PERF-50

Two painter desiccant dryer.

Replacement Elements:

- 1st stage: 3P-090
- 2nd stage: 3C-090
- 3rd stage: 3C-060

Available Kits:

- PERF-50-MK (elements only)
- PERF-50-RK (elements, desiccant, and fittings)
- PERF-50-TC (pre-packed desiccant towers and fittings)
- PERF-50-TCMK (elements, pre-packed desiccant towers, and fittings)

Literature Sheets: A042, A046, A048

Perfect Air® System Add-ons

Add-on accessories and kits to get the most out of your Perfect Air® systems.



PERF-25-MK



PERF-50-MK



PERF-25-RK



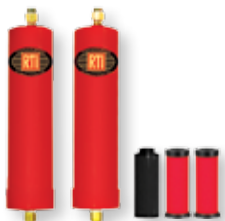
PERF-50-RK



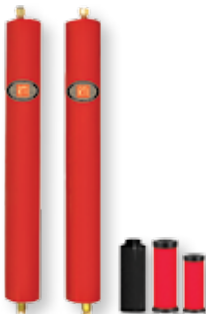
PERF-25-TC



PERF-50-TC



PERF-25-TCMK



PERF-50-TCMK

The PERF-25DDEMO is a great way to show shops the power of the PERF unit. It is a portable demo that is easily moved throughout shops where paint lines are being evaluated.



Available Kits

Maintenance and Rebuild kits that are available for the Perfect Air® units.

PERF-25:

PERF-25-MK, PERF-25-RK, PERF-25-TC, PERF-25-TCMK

PERF-50:

PERF-50-MK, PERF-50-RK, PERF-50-TC, PERF-50-TCMK

Literature Sheets: A067, A068

PERF-25DDEMO

This dolly-mounted demo unit is simple to get around, and set up is done in a matter of minutes. It includes the hand truck, mounting hardware for dryer, and fittings to attach the after filter to the dryer.

Note: The Perfect Air® 25 System is sold separately. Some light assembly is required. Demo units without the blue piping may still be shipped.

Literature Sheet: A055

Booth Products

Eliminator® II Series



E4000: ¼" regulator/gauge assembly and differential pressure indicator.

E4000-3R: ⅜" regulator/gauge assembly and differential pressure indicator.

Replacement Elements:

- 1st stage: 4P-060
- 2nd stage: DE401

Literature Sheets: A002, A003



EH2500: ½" inlet/outlet single stage desiccant dryer. Includes PB-004 mounting bracket.

Replacement Element:

DE401

Literature Sheets:

A002, A006



EH4000: ¼" regulator/gauge assembly.

EH4000-3R: ⅜" regulator/gauge assembly.

EH4000-4R: ½" regulator/gauge assembly.

Replacement Elements:

- 1st stage: 4P-060
- 2nd stage: DE401

Literature Sheets: A002, A004, A005, A051



EH7000-3R: ⅜" regulator/gauge assembly.

EH7000-4R: ½" regulator/gauge assembly.

Replacement Elements:

- 1st stage: 4P-060
- 2nd stage: 3C-090
- 3rd stage: DE401

Literature Sheets: A002, A007, A052

Booth Products



STEALTH 1700B

1/2" inlet, 1/2" regulator and gauge, multiport manifold, and couplers. Includes BK-1 mounting bracket, BV-051 ball valve.

Replacement Element: 3C-060

Literature Sheets: A024, A093



STEALTH 6060B

1/2" inlet dual-stage filter system with 3/8" regulator and gauge. Uses activated carbon to remove water, dirt, oil, oil vapor. Includes two BK-1 mounting brackets, BV-051 ball valve.

Replacement Elements:

1st stage: 6960-1
2nd stage: 3C-060

Literature Sheets: A019, A024



STEALTH 7000B

1/2" inlet filters dirt and oil at 0.01 micron with 1/4" regulator and gauge. Includes BK-1 mounting bracket, BV-051 ball valve.

Replacement Element: 3C-060

Literature Sheets: A023, A024

Corresponding Literature Sheets listed under items can be found on RTi's website: www.rti-pbe.com.



High Flow Couplers & Plugs

High quality brass construction suitable for high pressure applications. Available in 1/4" and 3/8".

Literature Sheet:
A115



PH35C/PH50C

High flow 35' & 50' conductive spraying hose (comes with High Flow Coupler and Plug).

Literature Sheet:
A079



PH35NC/PH50NC

High flow 35' & 50' non-conductive spraying hose that's lightweight and flexible.

Literature Sheet:
A079



MR-1

Mini paint gun regulator with up to 30 SCFM, 0-60 PSIG operating range, 1/4" inlet/outlet, and chrome glass lens gauge.

Literature Sheet:
A029



CV-02

Cheater valve with 1/4" NPT and 0-60 PSIG chrome glass lens gauge.

Literature Sheet:
A039

Mainline Products

Twin Tower Desiccant Systems



PERF-55HD

Mainline desiccant drying system that handles flow up to 15 HP compressors, delivers -40°F dew point air throughout shop, and comes complete with 0.01 micron pre and after filter.

Available Kit: PERF-55HD-MK
(replacement elements/mufflers)

Literature Sheet: A081



PERF-75HD

Mainline desiccant drying system that handles flow up to 30 HP compressors, delivers -40°F dew point air throughout shop, and comes complete with 0.01 micron pre and after filter.

Available Kit: PERF-75HD-MK
(replacement elements/mufflers)

Literature Sheet: A082



PERF-180HD

Mainline desiccant drying system that handles flow up to 50 HP compressors, delivers -40°F dew point air throughout shop, and comes complete with 0.01 micron pre and final filter.

Available Kit: PERF-180HD-MK
(replacement elements/mufflers)

Literature Sheet: A083

Mainline Accessories



ED-2-4

Electronic timer drain with indicator lights. Automatically drains water from tank and features a solid brass ball valve with stainless strainer to protect the valve. Manual override comes standard, fits 1/4" or 1/2" NPT.

Literature Sheet: A036



RTi-MGD

Mini magnetic drain uses magnetic level sensor to provide zero air loss operation. Corrosion resistant aluminum with 1/2" inlet, 1/8" outlet.

Literature Sheet: A100



TD5

Tank/drip leg automatic drain eliminates the daily manual draining and features a 1/2" NPT inlet on top with a filter screen to protect the drain.

Literature Sheet: A037

HD Regulators

Features

- Metal, corrosion-resistant anodized aluminum body
- Chemically resistant Buna N diaphragm
- See below chart for available port sizes
- Gauge included with units
- Tee handle knob

Part #	Flow Capacity (SCFM)	Adjusting Range Pressure (PSIG)	Port Size (NPT)	Maximum Supply Pressure (PSIG)	Maximum Operating Temp (°F)	Weight (lb.)	Dimensions (in.) D x H
R250HD-G	86	10-130	¼"	250	175	1.2	2.25 x 5.12
R380HD-G	100	10-130	⅜"	250	175	1.2	2.25 x 5.12
R500HD-G	108	10-130	½"	250	175	1.2	2.25 x 5.12
R750HD-G	175	10-130	¾"	250	175	3.2	3.75 x 6.75
R1000HD-G	300	10-130	1"	250	175	3.2	3.75 x 6.75
R1250HD-G	450	10-130	1¼"	250	175	3.9	4.00 x 6.75



Literature Sheet: A077

Precision Regulators

Corresponding Literature Sheets listed under items can be found on RTi's website: www.rti-pbe.com.



HPG-02S

Spray gun pressure analysis tool that is designed for applications where pressure is regulated on the wall. Supplied with 0-60 PSI gauge in 1 lb. increments

Literature Sheet: A107



R4DG

0-100 PSI oversized 4" gauge with glass face for quick and easy reading. Rapidly remove downstream pressure by turning adjustment knob. Unit comes with ½" NPT inlet/outlet ports. Gauge is displayed in 2 lb. increments.

Literature Sheets: A099, A108



R4DMG

0-100 PSI oversized 4" gauge with glass face for quick, easy reading, and MA500-4 multiport manifold with quick disconnects. Rapidly remove downstream pressure by turning adjustment knob. Unit comes with two (2) ¼" NPT gauge ports, usually used for additional outlets, and ½" NPT inlet/outlet ports. Gauge is displayed in 2 lb. increments.

Literature Sheets: A101, A108

Mainline Products

Modular Blue Piping Parts and Accessories



Alum. Pipe/Double Bend Alum. Pipe

Part Number	Sizing	
RTi-P34-20	20 mm	¾"
RTi-P1-20	25 mm	1"
RTi-P114-20	32 mm	1¼"
RTi-P112-20	40 mm	1½"
RTi-P2-20	50 mm	2"
RTi-DB12	16 mm	½"
RTi-DB34	20 mm	¾"
RTi-DB1	25 mm	1"



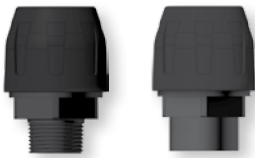
Equal Tee/Reducing Tee/Female NPT Tee

Part Number	Sizing	
RTi-T12	16 mm	½"
RTi-T34	20 mm	¾"
RTi-T1	25 mm	1"
RTi-RT34-12	20 x 16 mm	¾" x ½"
RTi-RT1-12	25 x 16 mm	1" x ½"
RTi-RT1-34	25 x 20 mm	1" x ¾"
RTi-RT114-34	32 x 20 mm	1¼" x ¾"
RTi-FT34-12	20 mm x ½" NPT	¾" x ½"
RTi-FT1-12	25 mm x ½" NPT	1" x ½"



Couplers/Endcaps

Part Number	Sizing	
RTi-PC12	16 mm	½"
RTi-PC34	20 mm	¾"
RTi-PC1	25 mm	1"
RTi-PC114	32 mm	1¼"
RTi-EC12	16 mm	½"
RTi-EC34	20 mm	¾"
RTi-EC1	25 mm	1"
RTi-EC114	32 mm	1¼"



Alum. Nipple Socket (Male/Female)

Part Number	Sizing	
RTi-NSA34-12	20 mm x ½" NPT	¾" x ½"
RTi-NSA34-34	20 mm x ¾" NPT	¾" x ¾"
RTi-NSA1-34	25 mm x ¾" NPT	1" x ¾"
RTi-NSA1-1	25 mm x 1" NPT	1" x 1"
RTi-FNSA34-12	20 mm x ½" NPT	¾" x ½"
RTi-FNSA34-34	20 mm x ¾" NPT	¾" x ¾"
RTi-FNSA1-1	25 mm x 1¼" NPT	1" x 1"



45° Elbow/ 90° Elbow

Part Number	Sizing	
RTi-E45-34	20 mm	¾"
RTi-E45-1	25 mm	1"
RTi-E45-114	32 mm	1¼"
RTi-E90-12	16 mm	½"
RTi-E90-34	20 mm	¾"
RTi-E90-1	25 mm	1"
RTi-E90-114	32 mm	1¼"



Quick Branch Droplet (Female NPT)

Part Number	Sizing	
RTi-QBT1-12	25 mm x ½" NPT	1" x ½"
RTi-QBT114-12	32 mm x ½" NPT	1¼" x ½"
RTi-QBT112-12	40 mm x ½" NPT	1½" x ½"

For complete list of pipe lengths, part numbers or accessories, visit our website: www.rti-pbe.com or call us at 800-521-9200.

*Please note: colors may vary on piping accessories.

Understanding the Modular Blue Piping Part Numbering System

RTi + P - Pipe
 NS - Nipple Socket
 PC - Socket Coupling
 E45 - 45° Elbow
 E90 - 90° Elbow
 RT - Reducing Tee

+ 12 - ½"
 34 - ¾"
 1 - 1"
 114 - 1¼"
 112 - 1½"

Example:

90° Elbow in ½": **RTi-E90-12**
 1" Alum. Pipe (19'): **RTi-P1-20**

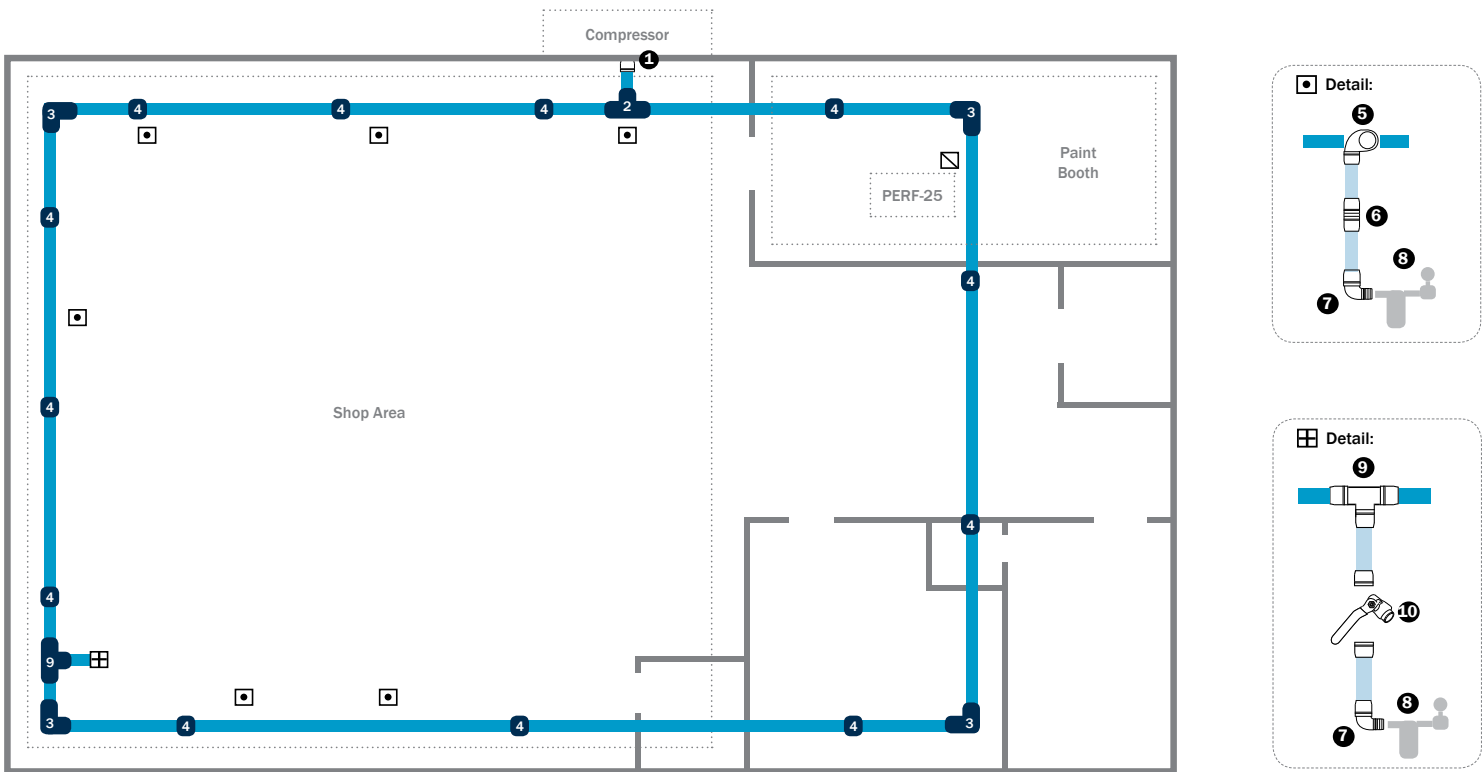
Literature Sheets: A094, A095

Modular Blue Piping

Features

- High quality, lightweight aluminum piping
- Perfect compliment to our Perfect Air® line
- Wide variety of accessories make installation a breeze
- Easy to install, easy to change, no welding or tapping

*Shop layouts with Modular Blue Piping are available upon request.
For more information, call RTi at 800-521-9200 or visit our website www.rti-pbe.com*



The Case for Aluminum Piping

- Aluminum pipe systems are much easier to install and to modify than steel or copper pipe systems. Labor savings of 65% can be achieved since aluminum pipe is supplied ready for use. Preparations beyond cutting, deburring, and chamfering are not required, nor are special tools needed. Aluminum pipe is calibrated, meaning that its diameter is strictly controlled. This means that associated quick connect components will fit securely.
- Aluminum pipe is much lighter than steel or copper pipe and does not require threading or soldering.
- The compressed air provided by a system built with aluminum piping is much cleaner than air delivered by a steel pipe system. Aluminum pipe systems can help meet the requirements of ISO 8573-1:2010 air quality standards, should the application require it. Cleaner air also means lower maintenance costs.
- Corrosion-resistant properties of aluminum pipe mean optimal air flow, reduced energy costs, and better air quality.
- The fittings used with aluminum pipe systems fit securely and leak far less than the fittings used with threaded systems. This translates directly into energy savings and improved plant productivity.

Mainline Products

Rotary Screw Compressors

Corresponding Literature Sheets listed under items can be found on RTI's website: www.rti-pbe.com.



Open Rotary Screw Compressor

- Operating pressures from 100-180 PSI
- Low speed rotors on air end for long life
- Less than 3 PPM oil carryover
- One solenoid valve to operate machine
- Quiet operation
- Spin on separator and oil filter

- Oil after-cooler on all models
- 8000 hour full synthetic oil standard
- 125, 150, 175 operating pressure at no extra charge
- Analog controls; no unnecessary/unreliable microprocessor
- 5 year extended warranty available for air end

Literature Sheets: Ai006, Ai007

A great choice for almost any application. The unit has 100% duty cycle so you cannot overwork the compressor. The simple maintenance and once-a-year oil change has made this series a perfect fit for body shops and many other applications. This series is the best screw compressor assembled in the U.S.A.



Enclosed Rotary Screw Compressor

- Available 5-300 HP
- Operating pressures from 100-180 PSI
- Low tip speeds on air end for long life
- Less than 3 PPM oil carryover
- One solenoid valve to operate machine
- Spin on separator and oil filter

- Oil after-cooler on all models
- 8000 hour full synthetic oil standard
- 125, 150, 175, 195 operating pressure at no extra charge
- Analog controls; no unnecessary/unreliable microprocessor
- 5 year extended warranty available for air end

Literature Sheets: Ai002, Ai007

Enclosed rotary screw compressors are the perfect compressors for the shop that wants to keep DBA's to a minimum. With the 5 HP operating at 64 DBA's and the 100 HP at 72 DBA's, they will hardly know it is running. With the same great air end as the regular rotary screw compressors, maintenance is still a simple process. Just unlatch the door and spin the new filter on. Simple is better. This series is designed for years of easy use and trouble free maintenance.

Piston Compressors

The Industrial Series compressors are designed for automotive and industrial applications. The CA2 pumps are manufactured for durability and long life. The units feature some of the most heavy duty components found in piston compressors today. The units run at a low RPM to provide reliable air for your application.



5-15 HP

- Solid cast iron pump
- Disc and spring valves
- Centrifugal unloader
- Low pump RPM
- Oil sight glass
- Oil drain/fill on front of compressor pump
- Heavy duty NEMA motors
- OSHA style totally enclosed belt guard
- ASME code receivers
- Needle bearings

Literature Sheets: Ai001, Ai007

Stationary Duplex

- Heavy duty two stage solid cast iron pump
- Disk and spring valves
- Bearings on both ends of crank shaft
- Industrial grade electric motor
- ASME tested powder coated steel tank
- Two (2) groove B width motor pulley
- All UL electrical controls
- Access to compressor valves without compressor head removal
- Auto start-stop
- Fully enclosed belt guard
- Centrifugal unloader
- Heavy duty air filter

Literature Sheets: Ai005, Ai007

15-25 HP

- Operating pressures from 100-180 PSI
- Low tip speeds on air end for long life
- Less than 3 PPM oil carry over
- One solenoid valve to operate machine
- Quiet operation
- Spin on separator and oil filter
- Oil after-cooler on all models
- 8000 hour full synthetic oil standard
- 125, 150, 175, 195 operating pressure at no extra charge
- Analog controls. No unnecessary and unreliable microprocessor
- 5 year extended warranty available for air end

Literature Sheets: Ai001, Ai007



Mainline Products

Eliminex® / Eliminex® Combo Series

Eliminex® Features

- Inverse-Flow® design filters to 3.0 micron
- Innovative clamp ring design - No tools needed
- Automatic drains

Eliminex® Combo Features

- Stops water, dirt, and oil
- Grade 2 coalescer filters to 0.01 micron
- Differential Pressure Indicator also available



EX104-B/EX204-B

60 SCFM, 1/2" NPT

Replacement Element: 1P-060

Replacement Elements (combo unit):

1st stage: 1P-060

2nd stage: 3C-060

Literature Sheet: A009



EX106/EX206

90 SCFM, 3/4" NPT

Replacement Element: 1P-090

Replacement Elements (combo unit):

1st stage: 1P-090

2nd stage: 3C-090

Literature Sheet: A009



EX108/EX208

150 SCFM, 1" NPT

Replacement Element: 1P-150

Replacement Elements (combo unit):

1st stage: 1P-150

2nd stage: 3C-150

Literature Sheet: A009

Larger pipe sizes are available.
Consult factory for more information.
See page 25 for regulators.

Coalescers

Features

- 0.01 micron at 99.99998% oil removal efficiency
- Automatic drains
- Tool-less spin on/spin off elements
- Pre-filter for desiccant dryer, refrigerated dryer, or after filter for desiccant dryers
- Differential Pressure Indicator also available



C104-B

60 SCFM, 1/2" NPT

Replacement Element: 3C-060

Literature Sheet: A013



C106

90 SCFM, 3/4" NPT

Replacement Element: 3C-090

Literature Sheet: A013



C108

150 SCFM, 1" NPT

Replacement Element: 3C-150

Literature Sheet: A013

Cycling Refrigerated Dryers



Literature Sheet: A028

Part Number	Airflow (SCFM)	Standard Voltage	Nominal Absorption Power (kW)	NPT
RDX 0020	20	115V / 1Ph	0.23	1/2"
RDX 0030	30	115V / 1Ph	0.24	3/4"
RDX 0045	45	115V / 1Ph	0.25	3/4"
RDX 0065	65	115V / 1Ph	0.47	1"
RDX 0090	90	115V / 1Ph	0.49	1"
RDX 0110	110	115V / 1Ph	0.51	1"

**Larger sizes available. Call factory for more information.

Cycling Refrigerated Dryer Specs

- 20-325 capacity (depends on model, other sizes available)
- Port sizes from 1/2" to 2"
- Max. Temp: 158°F
- Pressure Dew Point: 39°F

Cycling Refrigerated Dryer Features

- Compact size for easy fit
- Automatic timer drain (with manual override)
- Low maintenance, long life design

For more information on Refrigerated Dryers and a complete parts list, call us at 800-521-9200.

Non-cycling Refrigerated Dryers



Literature Sheet: A027

Part Number	Airflow (SCFM)	Standard Voltage	Nominal Absorption Power (kW)	NPT
RDNC 0020	20	115V / 1Ph	0.21	1/2"
RDNC 0035	35	115V / 1Ph	0.29	1/2"
RDNC 0050	50	115V / 1Ph	0.30	1/2"
RDNC 0075	75	115V / 1Ph	0.45	1"
RDNC 0100	100	115V / 1Ph	0.70	1 1/4"
RDNC 0150	150	115V / 1Ph	1.00	1 1/4"

**Larger sizes available. Call factory for more information.

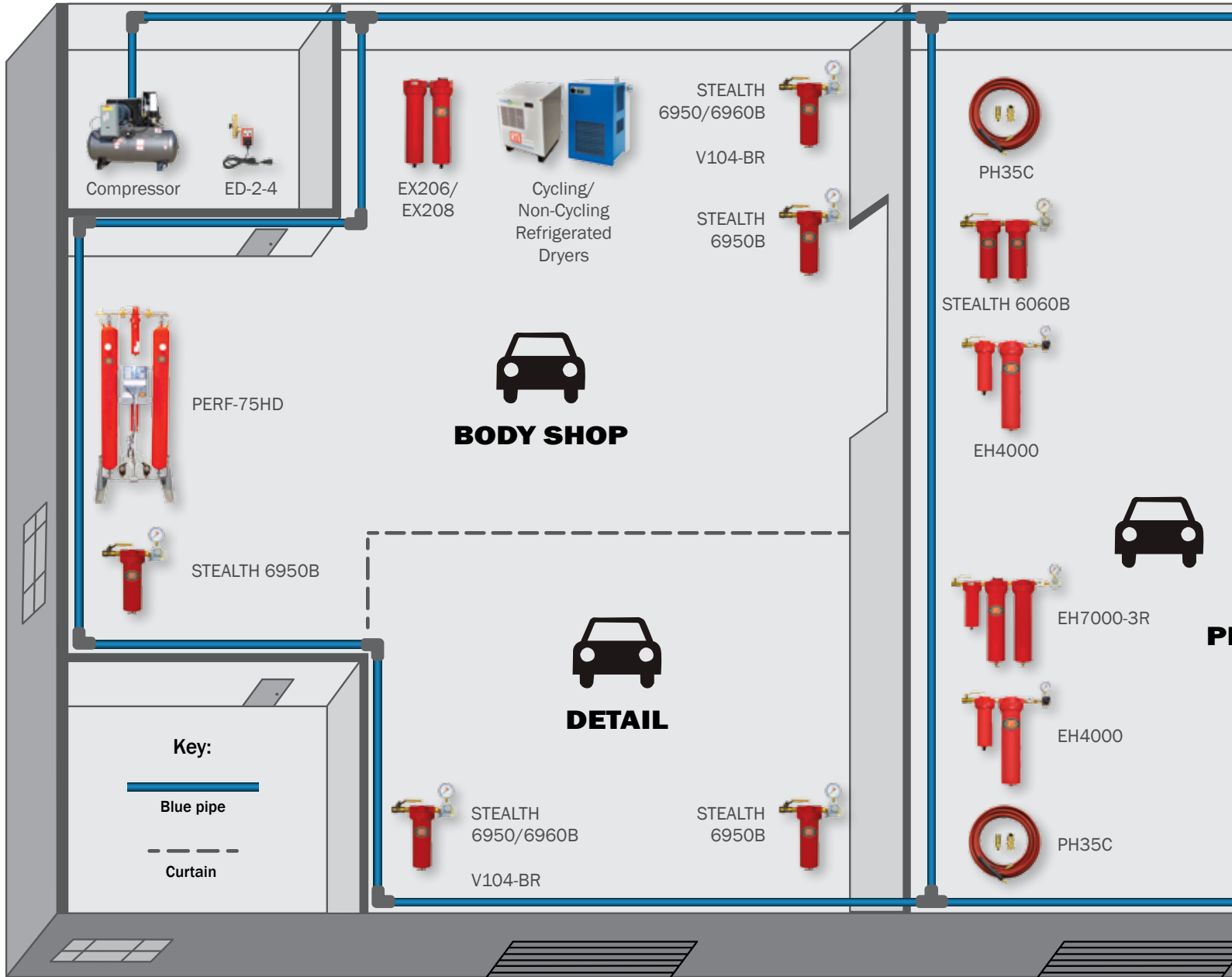
Non-Cycling Refrigerated Dryer Specs

- 20-150 capacity (depends on model, other sizes available)
- Port sizes from 1/2" to 4"
- Max. Temp: 130°F
- Pressure Dew Point: 38°F

Non-Cycling Refrigerated Dryer Features

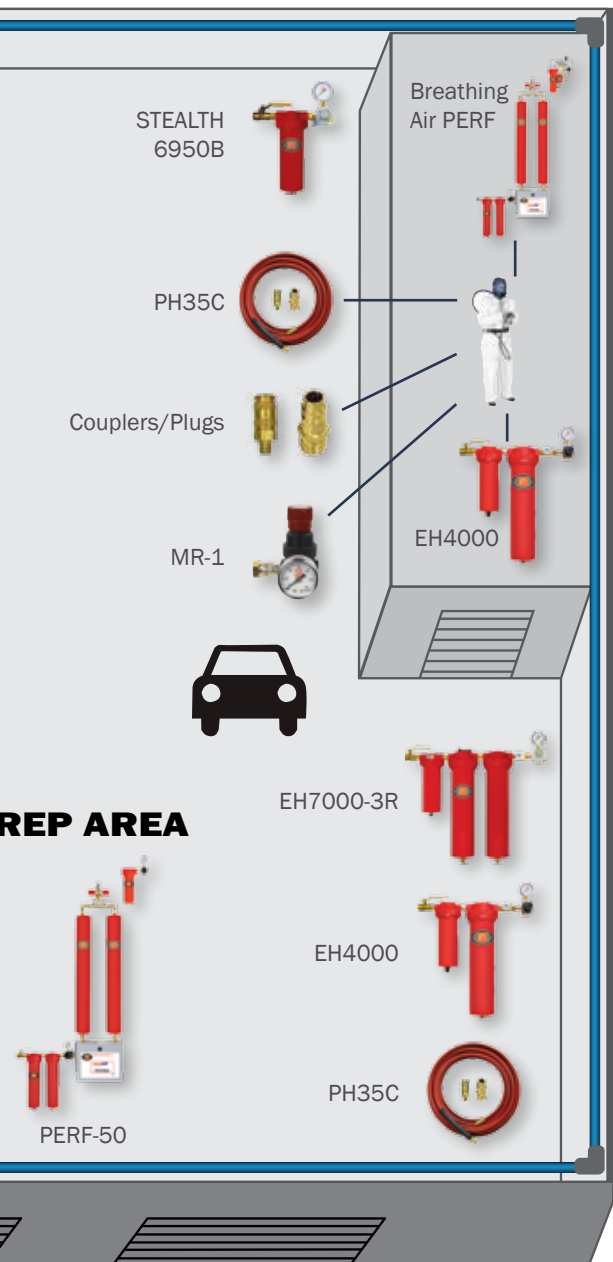
- Compact size for easy fit
- Automatic timer drain (with manual override)
- Low maintenance, long life design
- On/off switch with multi-function display

Shop Layout



Part Number	Shop Application	Best Feature	1st Stage Element	2nd Stage Element	3rd Stage Element
EX206	Mainline	Oil & water removal, 0.01 micron, ¾"	1P-090	3C-090	N/A
EX208	Mainline	Oil & water removal, 0.01 micron, 1"	1P-150	3C-150	N/A
C106	Mainline	Oil removal, ¾"	3C-090	N/A	N/A
C108	Mainline	Oil removal, 1"	3C-150	N/A	N/A
STEALTH 6950B	General Shop	Clean air w/ regulator	6950-1	N/A	N/A
STEALTH 6900B	General Shop	Easy service, clean air to tools	6950-1	N/A	N/A
STEALTH 6060B	Prep Station	Activated carbon filter, eliminates oil	6960-1	3C-060	N/A
STEALTH 7000B	Final Booth Filter	0.01 micron final filter	3C-060	N/A	N/A

Shop Layout



In addition to our standard units, we can customize units for your unique applications!

The layout provided is a sample layout of an autobody shop equipped with RTi products. In the charts below, there are other products listed that would be great to have in any shop.

RTi also offers Quality Air Tests (QAT) to test the quality of your shop's air. This service is available free of charge in most areas. See sheet on page 27.

Call us at 800-521-9200 or visit our website at www.rti-pbe.com for more information.

Part Number	Shop Application	Best Feature
Call for #'s	Compressor	Quiet running; long life
ED-2-4	Compressor/Line Drain	Electronic timer
TD5	Compressor/Line Drain	Auto/manual tank drain
Call for #'s	Mainline Refrigerated Dryer	Energy saving design
MR-1	Spray Gun Regulator	Precise 0-60 PSI regulator
BRAD-PERF Unit	Breathing Air Unit	Breathing air filtration
HVHA-35	Breathing Air Unit	Certified air hose
PH35C	Conductive Hose	No static build-up, high flow fittings
PERF-75HD*	Twin Tower System	Desiccant dryer
HFFC-1/HFMC-1	High Flow Couplers	Universal design
HFFP-1/HFMP-1	High Flow Plugs	High flow meets EPA guidelines

Part Number	Shop Application	Best Feature	1st Stage Element	2nd Stage Element	3rd Stage Element
E4000	1 Gun Spray Application	Includes final filter and 1/4" regulator	4P-060	DE401	N/A
EH4000-3R	1 Gun Spray Application	Includes final filter and 3/8" regulator	4P-060	DE401	N/A
EH7000-3R	1 Gun Spray Application	Heavy duty design for high contaminants	4P-060	3C-090	DE401
EH2500	Booth/Prep Dryer	Spin on/spin off desiccant	DE401	N/A	N/A
MD4	DIY/Low Volume Shops	1 micron, 4 layer filtration, 1/4" reg./gauge	MD4-1	N/A	N/A
PERF-25*	1 Gun Spray Booth	Regenerative desiccant dryer	3P-060	3C-060	3C-060
PERF-50*	2 Gun Spray Booth	Regenerative desiccant dryer	3P-090	3C-090	3C-060
V104-BR	Tool Saver	1 micron filter w/ auto drain & regulator	3P-060	N/A	N/A

* Available in money-saving maintenance kits!

Breathing Air Systems

Features

- Monitors Grade “D” breathable air
- Deep bed activated carbon pre-filter for hydrocarbon removal to 0.003 PPM
- 0.01 micron final filter designed for fine particulate and oil removal at 99.9998% efficiency
- Dual ½" outlets with ¼" high flow quick disconnects
- Rated for up to 60 SCFM
- Heavy duty, high flow regulator assembled with FDA lubricant
- 0-60 PSIG mini-regulator controls air pressure to monitor
- Low air sample rate through monitor
- 110 Volt AC electrical
- Radio frequency cancellation feature - if the monitor senses an RF signal, it will not alarm unless the signal lasts for 10 seconds or longer



BRAD-BD1-PRO

Portable BRAD-BD1 unit.

Replacement Elements:

- 1st stage: 4P-060
- 2nd stage: 3C-061

Literature Sheets:

A063, A064



BRAD-BD1

1-2 person pre-filter combo, CO monitor, ½" regulator with 0-160 PSI gauge, MR-1 mini regulator.

Replacement Elements:

- 1st stage: 4P-060
- 2nd stage: 3C-061

Literature Sheets:

A063, A064, A086



BRAD-BD2

2-6 person pre-filter combo, CO monitor, ½" regulator with 0-160 PSI gauge, MR-1 mini regulator.

Replacement Elements:

- 1st stage: DE362C
- 2nd stage: 3C-151

Literature Sheets:

A063, A064, A087



BRAD-CM3

CO Monitor.

Literature Sheets:

A063, A064



BRAD-9484

3-stage filter with ½" regulator, multiport manifold, two couplers, two BK-1 mounting brackets.

Replacement Elements:

- 1st stage: 4P-060
- 2nd stage: 3C-060
- 3rd stage: 3C-061

Literature Sheets: A063, A064, A065



BRAD-4000C

Complete system package with desiccant, pre-filter combo, desiccant tower, CO monitor.

Replacement Elements:

- 1st stage: 4P-060
- 2nd stage: 3C-061
- 3rd stage: DE401

Literature Sheets: A063, A064, A066



BRAD-PERF

Breathing air units for Perfect Air® systems. Available for PERF-25 and PERF-50 units.

Literature Sheets:

A062, A063

Breathing Air Systems Kits



BRAD-M1C

- Kit includes:
- Full Face Mask

The safest NIOSH approved air supply respirator mask design. Light weight with wide field of vision and over the shoulder air breathing tube. Meets OSHA standards [29CFR 1910.134(d)(1)].



BRAD-M2C

- Kit includes:
- Full Flip up Face Mask

Convenient NIOSH approved air supply respirator mask. Meets OSHA standards [29CFR 1910.134(d)(1)].



BRAD-M3C

- Kit includes:
- Maintenance Free Tyvek® Hood Mask

BRAD-OK-M1C-35

- Operator kit includes:
- Full face mask
 - 35' non-gassing hose assembly
 - Flow control valve, belt assembly

BRAD-OK-M1C-50

- Operator kit includes:
- Full face mask
 - 50' non-gassing hose assembly
 - Flow control valve, belt assembly

Replacement Lens Covers:

BRAD-M1-LC (pack of 25)

Literature Sheets: A063, A064

BRAD-OK-M2C-35

- Operator kit includes:
- Flip-up mask
 - 35' non-gassing hose assembly
 - Flow control valve, belt assembly

BRAD-OK-M2C-50

- Operator kit includes:
- Flip-up mask
 - 50' non-gassing hose assembly
 - Flow control valve, belt assembly

Replacement Lens Covers:

BRAD-M2-LC (pack of 10)

Literature Sheets: A063, A064

BRAD-OK-M3C-35

- Operator kit includes:
- Disposable hood
 - 35' non-gassing hose assembly
 - Flow control valve, belt assembly

BRAD-OK-M3C-50

- Operator kit includes:
- Disposable hood
 - 50' non-gassing hose assembly
 - Flow control valve, belt assembly

Replacement Lens Covers:

BRAD-M3-LC (pack of 10)

Literature Sheets: A063, A064



BRAD-FCV

Flow control valve and belt assembly.

Literature Sheets: A063, A064



BRAD-HD1

Humidifier.

Literature Sheet:
A063



BRAD-VC

Vordex Cooler.

Literature Sheet:
A063



HVHA-B35C/HVHA-B50C

35' and 50' non-gassing hose assembly.

Literature Sheets: A063, A064

DIY Tool Savers/Spray Applications

STEALTH Units



STEALTH 6900B

¼" inlet filters water and dirt with 1 micron final filtration. Includes BK-1 mounting bracket, BV-051 ball valve.

Replacement Element: 6950-1

Literature Sheets: A020, A024



STEALTH 6950B

½" inlet filters water and dirt to 1 micron, comes with ¼" regulator and gauge. Includes BK-1 mounting bracket, BV-051 ball valve.

Replacement Element: 6950-1

Literature Sheets: A021, A024



STEALTH 6960B

½" inlet filters water, dirt, and oil with ¼" regulator and gauge. Includes BK-1 mounting bracket, BV-051 ball valve.

Replacement Element: 6960-1

Literature Sheets: A022, A024



STEALTH 7500

¾" inlet filters water, dirt, and oil with ¾" heavy duty regulator and gauge. Includes BV-075 ball valve.

Does not come with a BK-1 mounting bracket.

Replacement Elements:

1st stage: 3P-150

2nd stage: 3C-150

Literature Sheets: A024, A111



Vordex V104-BR

½" inlet filters water, dirt, and oil to 1 micron with a ¼" regulator, gauge, and automatic drain. Includes BK-1 mounting bracket.

Replacement Element: 3P-060

Literature Sheet: A026

DIY Tool Savers/Spray Applications

STEALTH Units



STEALTH 1000B

½" inlet, ½" regulator and gauge, 0.01 micron filter system. Perfect for RTI's Blue Piping. Includes BK-1 mounting bracket, BV-051 ball valve.

Replacement Element: 3C-060

Literature Sheets: A024, A090



STEALTH 1500B

½" inlet, ½" regulator and gauge, multiport manifold, and couplers. Includes BK-1 mounting bracket, BV-051 ball valve.

Replacement Element: 3C-060

Literature Sheets: A024, A092



STEALTH 1700B

½" inlet, ½" regulator and gauge, multiport manifold, and couplers. Includes BK-1 mounting bracket, BV-051 ball valve.

Replacement Element: 3C-060

Literature Sheets: A024, A093



STEALTH 3250B

½" inlet filters dirt and oil with a 0-100 PSI oversized gauge and MA500-4 multiport manifold with quick disconnects. Includes BK-1 mounting bracket, BV-051 ball valve.

Replacement Element: 3C-060

Literature Sheets: A024, A035, A108



STEALTH 6060B

½" inlet dual-stage filter system with ¾" regulator and gauge. Uses activated carbon to remove water, dirt, oil, oil vapor. Includes two BK-1 mounting brackets, BV-051 ball valve.

Replacement Elements:

1st stage: 6960-1

2nd stage: 3C-060

Literature Sheets: A019, A024



STEALTH 7000B/7800B

½" inlet filters dirt and oil to 0.01 micron and comes with ¼" regulator and gauge. Includes BK-1 mounting bracket, BV-051 ball valve. **STEALTH 7800B does not include regulator and gauge.**

Replacement Element: 3C-060

Literature Sheets: A023, A024

DIY Tool Savers/Spray Applications

F/FR Series Filters

Features

- ¼" or ½"
- Adjustable 0-150 PSI regulator
- Low pressure drop
- Can be wall mounted or panel nut mounted
- Semi-automatic drain with manual override
- Filters to 5 micron
- Maximum pressure is 230 PSI
- Temperature range from 40°F to 120°F
- 30 SCFM and 80 SCFM rating
- F Replacement Elements: F250-E, F500-E
- FR Replacement Elements: FR250-E, FR500-E



FR250-G/FR500-G

F250/F500

Literature Sheet: A030

DIY Spray Applications

MD4

Features

- 1.0 micron, 4 layer filtration
- ½" inlet, ball valve, and manual drain
- Oil and humidity free air
- ¼" regulator with gauge
- Point-of-use installation
- Includes mounting bracket



MD4
Mini Desiccant Dryer



MD4-1
Replacement Element

Corresponding Literature Sheets listed under items can be found on RTi's website: www.rti-pbe.com.

Shop Hoses and Quick Disconnects



RTi-SH-35-MM
35' shop hose. Also available in 50' (RTi-SH-50-MM).

Literature Sheet: A041



PH35NC
High flow 35' non-conductive shop hose. Also available in 50' (PH50NC).

Literature Sheet: A079



High Flow Couplers & Plugs
High quality brass construction suitable for high pressure applications. Available in ¼" and ⅜".

Literature Sheet: A115

Perfect Air® Maintenance/Rebuild Kits

For more on Maintenance/Rebuild/Upgrade kits, visit our website at www.rti-pbe.com or call 800-521-9200.



PERF-25-MK

Maintenance kit includes PERF-25 elements only.

Literature Sheets:

A067, A068, A074



PERF-25-RK

Repair kit for PERF-25. Needed every 3-5 years to re-pack desiccant.

Literature Sheets:

A067, A068, A074



PERF-25-TC

Pre-packed desiccant towers. Needed every 3-5 years.

Literature Sheet: A068



PERF-25-TCMK

Pre-packed desiccant towers, comes with replacement elements.

Literature Sheet: A068



PERF-50-MK

Maintenance kit includes PERF-50 elements only.

Literature Sheets:

A067, A068, A074

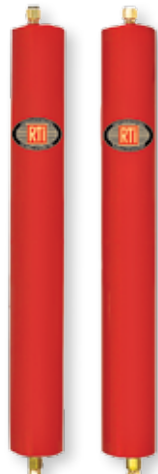


PERF-50-RK

Repair kit for PERF-50. Needed every 3-5 years to re-pack desiccant.

Literature Sheets:

A067, A068, A074



PERF-50-TC

Pre-packed desiccant towers. Needed every 3-5 years.

Literature Sheet: A068



PERF-50-TCMK

Pre-packed desiccant towers, comes with replacement elements.

Literature Sheet: A068

Rebuild/Upgrade Kits

Rebuild/Upgrade Kits/Accessories



RT-676-RK
Rebuild kit for competitor system.

Literature Sheets:
A061, A074



RT-676-UG
Upgrade kit for competitor system.

Literature Sheet: A061



RTi-D500-RK
Rebuild kit for competitor system.

Literature Sheets:
A061, A074



RTi-D500-UG
Upgrade kit for competitor system.

Literature Sheet: A061



RTi-D500-UG2
Upgrade kit for competitor system.

Literature Sheets:
A061, A074



RTi-T10-RK
Rebuild kit for competitor system.

Literature Sheets:
A061, A074



RTi-T10-UG
Upgrade kit for competitor system.

Literature Sheet: A061



NB-30
Replacement desiccant element for competitor system.

Literature Sheet: A031



RT30-KIT
Replacement desiccant elements/indicator for competitor system.

Literature Sheet: A061



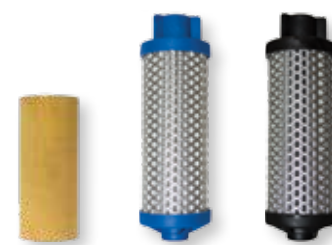
D-05
5lbs. loose activated alumina desiccant (Also available in 50lbs: D-50).

Literature Sheet: A074



MRAS-2XR
Multi-regulator air station (w/o quick disconnects: MRAS-2XRL).

Literature Sheet: A069



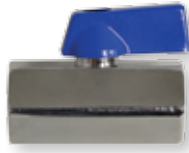
RTi-SAF-0, -1, -2
Change out elements for competitor units.

Literature Sheet: A122

Available Accessories



BK-1
Mounting bracket.



BV-050
1/2" chrome ball valve.



BV-051 / BV-075
1/2" brass ball valve,
3/4" brass ball valve.



CV-02
Cheater valve with gauge.



EH-STAND-2
Demo stand for EH units.



HPG-02S
1/4" straight-thru assembly
with gauge.



LTC-017
Shuttle valve.



MA500-4/MA500-5
1/4" and 1/2" multiple outlet
manifold.



N32-95-979
Automatic float drain.



N32-W1-DPi
Differential pressure
indicator.



PB-C
High flow pencil blower.



PG-160
1/8" 0-160 PSIG gauge.



PG-160-1.5CB
0-160 PSIG gauge
(for FR250-G/FR500-G).



PH4C/HS-04-04
1/4" x 4' whip hose,
1/2" x 4' whip hose.



RG25
1/4" regulator and gauge
assembly.



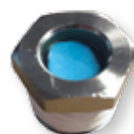
RG30
3/8" regulator and gauge
assembly.



RG40
1/2" regulator and gauge
assembly.



RTi-QAT
Air quality test kit. Repl. filter
disks: RTi-QATMD (10 pack).



RTi-SG-651
1/2" sight glass with
humidicator paper.



RTi-SY9540
PERF solenoid valve.

Filter Comparison/Air Line Contamination

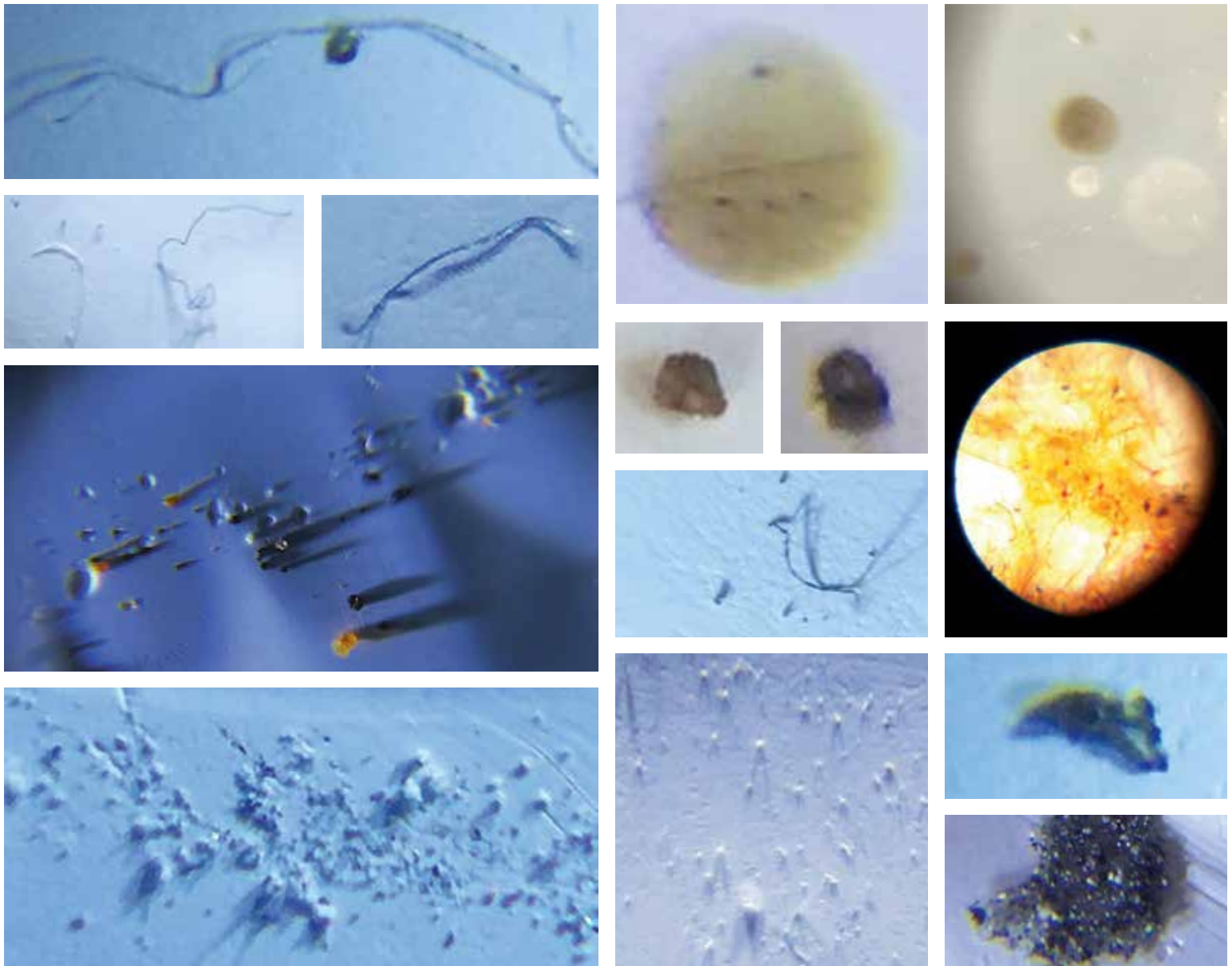
Filter Comparison



Elements are shown clear for demonstration only.

Air Line Contamination Examples

Examples of particulate found in air lines during an air audit.



Air Audit Sheet

Company Name: _____ Date: _____
Address: _____ Email: _____
City, State, Zip Code: _____ Distributor: _____
Phone: _____ Contact Person: _____

Air Compressor:

Size (HP): _____
Tank (Gal): _____
Type: _____
Drained: Y N (circle one) When: _____
How often: _____

Piping, Hoses & Couplers:

Material Type: _____ Hose Size: 1/4" 15/16" 3/8"
Size: _____
No. of Drains/Drops: _____
Filtered: Y N (circle one)
System: Dead End or Loop (circle one)
ACFM Requirements: _____
ACFM: _____

Filters:

Brand you're using:

Refrigerated Dryer: Y N _____
Filter Elements: Y N _____
Desiccant Dryers: Y N _____
Gun Filters: Y N _____

Drained: Y N (circle one) How Often: _____
Date of Last Change: _____ How Often: _____
Date of Last Change: _____ How Often: _____
Date of Last Change: _____ How Often: _____

Air Tests:

Location: _____
Compressed Air Dew Point: _____
Compressed Air Humidity @ 70°F: _____
Contaminants: _____
Type: _____
Air Flow Test (Pass/Fail): _____

Location: _____
Compressed Air Dew Point: _____
Compressed Air Humidity @ 70°F: _____
Contaminants: _____
Type: _____
Air Flow Test (Pass/Fail): _____

Recommendations:

Name of Representative: _____ Date: _____

***In order to make our air audit procedures more efficient and provide more in depth results for the shops, you can download an app called "Calculator of Air" (iPhone®) or "Michell Instruments" (Android™). You need to input 2 lines. The first is temperature which will always be 70° F (paint company recommended temperature). The second is the dew point from your QAT tester. Push enter and you will see the wet bulb number. This is a more accurate reading for the compressed air humidity percentage (CAH).*



v5.1 12/2020



(800) 521-9200



www.rti-pbe.com



@RTIPBE



@rti_pbe