



DAKOTA SOURCING, LLC

Heating and Air Conditioning Manufacturer and Distributor

Now can be combined with other
PASCO Products.

Pay on **PASCO** Invoices.

Same Terms and Conditions.

Shipped from **PASCO** Warehouses.

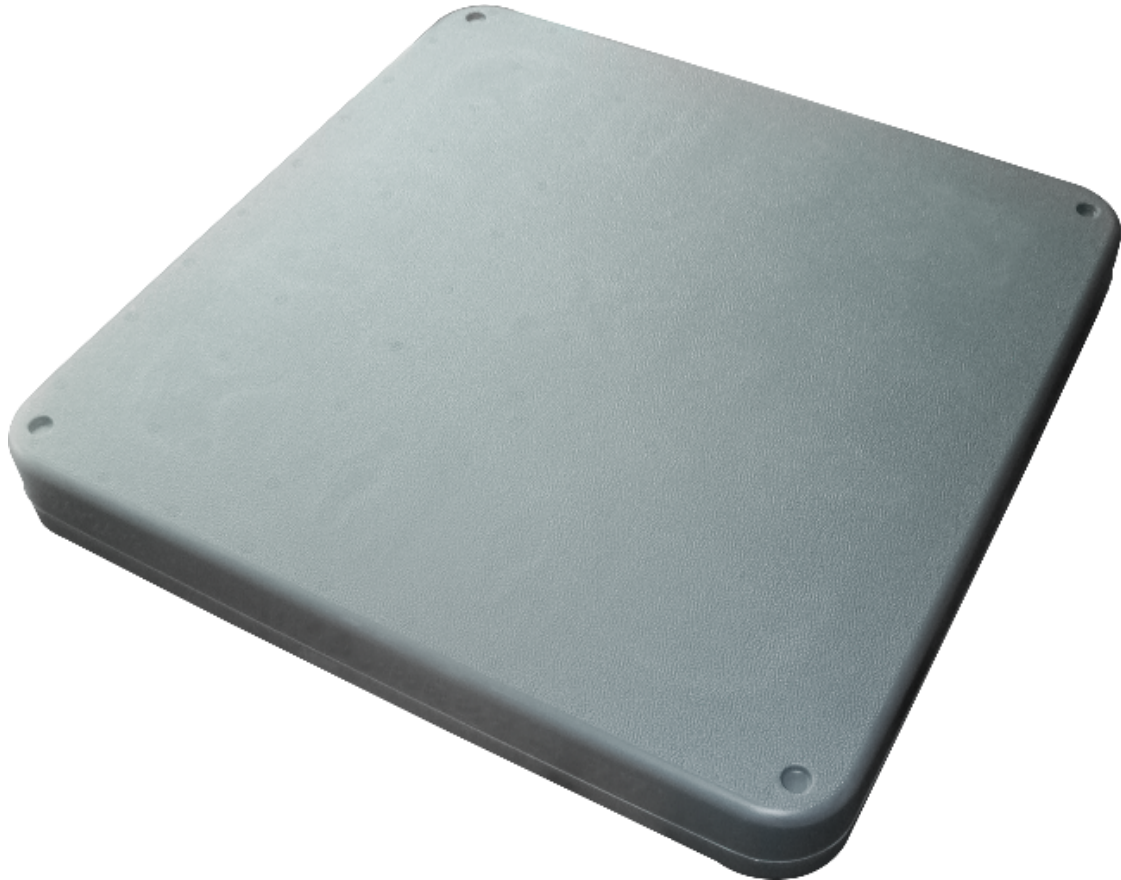
601 N. 16th St.
Beresford, SD 57004

Phone: 605-540-4370
www.dakotasourcing.com

EQUIPMENT PADS

BLOW PLASTIC EQUIPMENT PADS

Blow equipment pads have strong high density polyethylene construction which have excellent strength and durability. Anchor point design helps keep pads stacked. Can choose from colors black or gray.



Item No.	Specifications	U/M	Plt. Pkg.
18041	24" x 24" x 2"	EA	40
18041B	24" x 24" x 2"	EA	40
18042	24" x 24" x 3"	EA	26
18042B	24" x 24" x 3"	EA	26
18043	30" x 30" x 2"	EA	29
18043B	30" x 30" x 2"	EA	29
18044	30" x 30" x 3"	EA	20
18044B	30" x 30" x 3"	EA	20
18045	32" x 32" x 2"	EA	26
18045B	32" x 32" x 2"	EA	26
18046	32" x 32" x 3"	EA	18
18046B	32" x 32" x 3"	EA	18

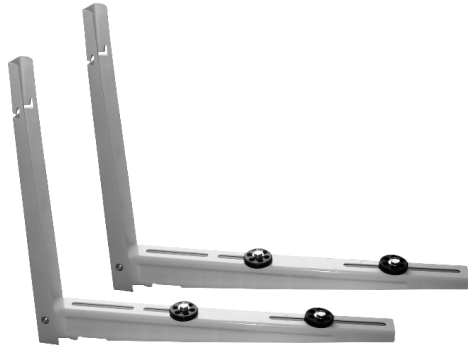
Item No.	Specifications	U/M	Plt. Pkg.
18047	36" x 36" x 2"	EA	27
18047B	36" x 36" x 2"	EA	27
18048	36" x 36" x 3"	EA	16
18048B	36" x 36" x 3"	EA	16
18049	40" x 40" x 3"	EA	15
18049B	40" x 40" x 3"	EA	15
18050	18" x 38" x 3"	EA	15
18050B	18" x 38" x 3"	EA	15
18051	24" x 36" x 2"	EA	48
18051B	24" x 36" x 2"	EA	48
18052	24" x 36" x 3"	EA	32
18052B	24" x 36" x 3"	EA	32

B= Black color
Private label upon request

MOUNTING SUPPLIES

MINI SPLIT BRACKET (TYPE 1)

Use for loading split type air conditioner of outdoor unit
 Minimizes the chance of damage to the window or outside wall
 Compatible with most air conditioners
 Includes all necessary hardware
 Quick and easy installation



Item No.	Specifications	U/M	Std. Pkg.
18023	16-1/2" x 21-3/4" (3 HP)	PR	10

MINI SPLIT BRACKETS (TYPE 2)

Use for supporting condensing units
 Add a sturdy cross bar
 Includes bubble level and adjustable back support
 All necessary hardware included
 Quick and easy installation



Item No.	Specifications	U/M	Std. Pkg.
18024	31" x 15" x 17-3/4" (2 HP)	PR	10
18025	31-1/2" x 15" x 21-1/2" (3 HP)	PR	10

WALL MOUNT A/C BRACKETS

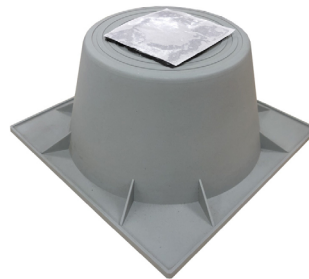
Use for A/C condensers and heat pumps
 Can be mounted at any height
 Strong and durable, not easily affected by bad weather



Item No.	Specifications	U/M	Plt. Pkg.
18026	30"	PR	48
18027	36"	PR	48
18028	42"	PR	48
18029	48"	PR	48

ONE PIECE CONDENSER RISERS

Sturdy & Stable
 Used to elevate the system from the potential threat of rain or snow
 Extends the life of your condenser or heat pump by allowing the base of the unit to stay dry



Item No.	Specifications	U/M	Std. Pkg.
18030	3"	EA	48
18031	6"	EA	36

HVAC

PLUMBING

TOOLS

MISCELLANEOUS

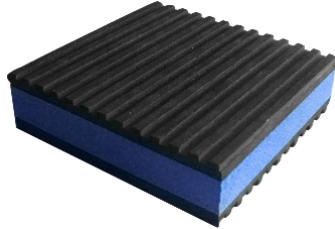
HARDWARE

ORIG. MANUFACTURING

MOUNTING SUPPLIES

HIGH PERFORMANCE PADS

Ribbed design with an EVA foam center
The color of EVA foam can be customized
Customer logo can be printed on the product



Item No.	Specifications	U/M	Std. Pkg.
18301	2" x 2" x 7/8"	EA	100
18302	3" x 3" x 7/8"	EA	36
18303	4" x 4" x 7/8"	EA	24
18304	6" x 6" x 7/8"	EA	12
18305	18" x 18" x 7/8"	EA	6

CORK/RUBBER PADS

Rubber pads with cork sheet
Cork with ribbed pads on either side for added isolation and positive grip
Have excellent vibration-reducing effect



Item No.	Specifications	U/M	Std. Pkg.
18306	2" x 2" x 7/8"	EA	100
18307	3" x 3" x 7/8"	EA	36
18308	4" x 4" x 7/8"	EA	24
18309	6" x 6" x 7/8"	EA	12
18310	12" x 12" x 7/8"	EA	12
18311	18" x 18" x 7/8"	EA	6

ALL RUBBER PADS

Made from high quality elastomeric materials
Solid ribbed design add the isolation and positive grip
Have excellent vibration-reducing effect



Item No.	Specifications	U/M	Std. Pkg.
18312	2" x 2" x 3/8"	EA	48
18313	3" x 3" x 3/8"	EA	24
18314	4" x 4" x 3/8"	EA	24
18315	6" x 6" x 3/8"	EA	24
18316	18" x 18" x 3/8"	EA	6

WAFFLE SQUARES EQUIPMENT PADS

Designed to reduce problems in industry caused by structure born vibrations and noise very thick and very durable
Have excellent vibration-reducing effect



Item No.	Specifications	U/M	Std. Pkg.
18317	2" x 2" x 3/4"	EA	40
18318	4" x 4" x 3/4"	EA	20
18319	18" x 18" x 3/4"	EA	5

DRAIN PANS

PLASTIC CONDENSATE DRAIN PANS

Plastic condensate drain pans are designed to help collect condensate from air conditioning and heating units. They feature ribbed bottoms and reinforced corners for strength. Rolled edges are designed to be easy on the hands.



Item No.	Specifications	U/M	Std. Pkg.
18001	24" x 24" Bottom, 26" x 26" Overall, Drain: S	EA	5
18002	27" x 29" Bottom, 29" x 31" Overall, Drain: LS	EA	5
18003	27" x 29" Bottom, 29" x 31" Overall, Drain: SS	EA	5
18004	27" x 39" Bottom, 29" x 41" Overall, Drain: LS	EA	5
18005	27" x 39" Bottom, 29" x 41" Overall, Drain: SS	EA	5
18006	27" x 48" Bottom, 29" x 50" Overall, Drain: LS	EA	5
18007	27" x 48" Bottom, 29" x 50" Overall, Drain: SS	EA	5
18008	27" x 63" Bottom, 29" x 65" Overall, Drain: LS	EA	5
18009	27" x 63" Bottom, 29" x 65" Overall, Drain: SS	EA	5
18010	30" x 30" Bottom, 32" x 32" Overall, Drain: S	EA	5

Item No.	Specifications	U/M	Std. Pkg.
18011	30" x 50" Bottom, 32" x 52" Overall, Drain: LS	EA	5
18012	30" x 50" Bottom, 32" x 52" Overall, Drain: SS	EA	5
18013	30" x 60" Bottom, 32" x 62" Overall, Drain: LS	EA	5
18014	30" x 60" Bottom, 32" x 62" Overall, Drain: SS	EA	5
18015	32" x 63" Bottom, 34" x 65" Overall, Drain: LS	EA	5
18016	32" x 63" Bottom, 34" x 65" Overall, Drain: SS	EA	5
18017	36" x 36" Bottom, 38" x 38" Overall, Drain: S	EA	5
18018	36" x 60" Bottom, 38" x 62" Overall, Drain: LS	EA	5
18019	36" x 60" Bottom, 38" x 62" Overall, Drain: SS	EA	5
18020	24" Round Bottom, 26" Round Overall, Drain: S	EA	5

LS - Drain fitting at Long Side
 SS - Drain fitting at Short Side

DRAIN PANS

ALUMINUM WATER HEATER DRAIN PANS

Protects against water damage caused by leaking water heater
 Rolled edges to avoid cuts and scrapes



Item No.	Specifications	U/M	Std. Pkg.
18061	20" Aluminum, 20GA	EA	5
18062	22" Aluminum, 20GA	EA	5
18063	24" Aluminum, 20GA	EA	5
18064	26" Aluminum, 20GA	EA	5
18065	28" Aluminum, 20GA	EA	5
18066	30" Aluminum, 20GA	EA	5

PLASTIC WATER HEATER DRAIN PANS

Durable plastic pan will not rust, corrode or crack
 Pre cut side opening for drain fitting



Item No.	Specifications	U/M	Std. Pkg.
18081	20", 0.05" Thickness	EA	5
18082	22", 0.05" Thickness	EA	5
18083	24", 0.05" Thickness	EA	5
18084	26", 0.05" Thickness	EA	5
18085	28", 0.05" Thickness	EA	5
18086	30", 0.05" Thickness	EA	5

STRAPS

P.P. WEBBING HANGER STRAPS

Available in black & silver.
Use for hanging flexible ducting and so on.
High strength, fine texture & dyeing uniformity.



Item No.	Specifications	U/M	Std. Pkg.
18622	1-3/4" x 100 Yards, Black	RL	24
18628	3" x 100 Yards, Black	RL	8
18632	1-3/4" x 100 Yards, Silver	RL	24
18633	3" x 100 Yards, Silver	RL	8

GAS LINES

HEX BODY AIR TEST GAUGES

All gauges are 2" diameter face
Easy-to-read gauge with clear facing
Test air pressure
Durable construction for performance reliability
Colored galvanized iron threaded bell for leak tight connection



Item No.	Specifications	U/M	Std. Pkg.
12713	1/2" 0-15 PSI	EA	50
12714	3/4" 0-15 PSI	EA	50
12715	1" 0-15 PSI	EA	50
12716	1/2" 0-60 PSI	EA	50
12717	3/4" 0-60 PSI	EA	50
12718	1" 0-60 PSI	EA	50
12719	1/2" 0-30 PSI	EA	50
12720	3/4" 0-30 PSI	EA	50
12721	1" 0-30 PSI	EA	50
12722	1/2" 0-100 PSI	EA	50
12723	3/4" 0-100 PSI	EA	50
12724	1" 0-100 PSI	EA	50

GAS LINES

BLACK FITTING AIR TEST GAUGES

All gauges are 2" diameter face
Easy-to-read gauge with clear facing
Test air pressure
Durable construction for performance reliability
Black iron threaded bell for leak tight connection



Item No.	Specifications	U/M	Std. Pkg.
12701	1/2" 0-15 PSI	EA	50
12702	3/4" 0-15 PSI	EA	50
12703	1" 0-15 PSI	EA	50
12704	1/2" 0-60 PSI	EA	50
12705	3/4" 0-60 PSI	EA	50
12706	1" 0-60 PSI	EA	50
12707	1/2" 0-30 PSI	EA	50
12708	3/4" 0-30 PSI	EA	50
12709	1" 0-30 PSI	EA	50
12710	1/2" 0-100 PSI	EA	50
12711	3/4" 0-100 PSI	EA	50
12712	1" 0-100 PSI	EA	50

HEX BODY VERTICAL AIR TEST GAUGES

All gauges are 2" diameter face
Easy-to-read gauge with clear facing
Test air pressure
Durable construction for performance reliability
Colored galvanized iron threaded bell for leak tight connection



Item No.	Specifications	U/M	Std. Pkg.
12725	1/2" 0-15 PSI	EA	50
12726	1/2" 0-30 PSI	EA	50
12727	1/2" 0-60 PSI	EA	50
12728	1/2" 0-100 PSI	EA	50
12729	3/4" 0-15 PSI	EA	50
12730	3/4" 0-30 PSI	EA	50
12731	3/4" 0-60 PSI	EA	50
12732	3/4" 0-100 PSI	EA	50
12733	1" 0-15 PSI	EA	50
12734	1" 0-30 PSI	EA	50
12735	1" 0-60 PSI	EA	50
12736	1" 0-100 PSI	EA	50

VINYL TUBING

CLEAR VINYL TUBING

Flexible, transparent, lightweight and durable
Excellent use for condensate drainage



Item No.	Specifications	U/M	Std. Pkg.
12401	1/4" I.D. 3/8" O.D. x 100'	RL	1
12402	3/8" I.D. 1/2" O.D. x 100'	RL	1
12403	1/2" I.D. 5/8" O.D. x 100'	RL	1
12404	5/8" I.D. 3/4" O.D. x 100'	RL	1
12405	3/4" I.D. 7/8" O.D. x 100'	RL	1
12406	7/8" I.D. 1" O.D. x 50'	RL	1

BRAIDED PVC TUBING

The braided design helps reinforce the strength of the hose
Flexible, transparent, lightweight, durable and non-toxic



Item No.	Specifications	U/M	Std. Pkg.
12407	1/4" I.D. x 50'	RL	1
12408	3/8" I.D. x 50'	RL	1
12409	1/2" I.D. x 50'	RL	1
12410	5/8" I.D. x 50'	RL	1
12411	3/4" I.D. x 50'	RL	1

CONDUIT & FITTINGS

N/M FITTINGS CONDUIT WHIPS

UL Listed
Cable consists of insulated conductors inserted into a non-metallic conduit with PVC connectors
Be designed for reliable use as a connection between air conditioning unit and electrical power source



Item No.	Specifications	U/M	Std. Pkg.
15801	1/2" x 4' 10GA	EA	1
15802	1/2" x 6' 10GA	EA	1
15803	3/4" x 4' 8GA w/Ground	EA	1
15804	3/4" x 6' 8GA w/Ground	EA	1

M FITTINGS CONDUIT WHIPS

UL Listed
Cable consists of insulated conductors inserted into a non-metallic conduit with zinc alloy connectors
Be designed for reliable use as a connection between air conditioning unit and electrical power source



Item No.	Specifications	U/M	Std. Pkg.
15805	1/2" x 4' 10GA	EA	1
15806	1/2" x 6' 10GA	EA	1
15807	3/4" x 4' 8GA w/Ground	EA	1
15808	3/4" x 6' 8GA w/Ground	EA	1

CONDUIT & FITTINGS

PVC CONDUIT FITTINGS

UL Listed
 Used to terminate and seal liquid
 Connectors can be used with tapered thread female
 entry or unthreaded knock-out using the provided
 sealing washer and locknut
 No disassembly required & reusable



Item No.	Specifications	U/M	Std. Pkg.
15809	1/2" PVC Multi-Piece	EA	25
15810	3/4" PVC Multi-Piece	EA	10
15811	1/2" 90° Elbow PVC Multi-Piece	EA	10
15812	3/4" 90° Elbow PVC Multi-Piece	EA	10

NYLON CONDUIT FITTINGS

UL Listed
 Used to terminate and seal liquid
 Connectors can be used with tapered thread female
 entry or unthreaded knock-out using the provided
 sealing washer and locknut
 No disassembly required & reusable



Item No.	Specifications	U/M	Std. Pkg.
15813	1/2" Nylon Multi-Piece	EA	25
15814	3/4" Nylon Multi-Piece	EA	10
15815	1/2" 90° Elbow Nylon Multi-Piece	EA	10
15816	3/4" 90° Elbow Nylon Multi-Piece	EA	10

METALLIC CONDUIT FITTINGS

UL Listed
 Easy installation and provides a perfect seal
 Included sealing washer provides liquid tight seal
 when connecting to a threadless opening
 Used to bond liquid tight conduits to electrical
 junction boxes & enclosures



Item No.	Specifications	U/M	Std. Pkg.
15817	1/2"	EA	25
15818	3/4"	EA	10
15819	1/2" 90° Elbow	EA	10
15820	3/4" 90° Elbow	EA	10

NON-METALLIC LIQUID TIGHT CONDUIT

UL Listed
 Made from high quality PVC. Smooth inside for
 easier wire pulling, no hazardous sharp edges or
 burrs, will not damage conductors. Light weight and
 lower installed cost. Quick installation, cuts with
 utility knife or PVC cutter.



Item No.	Specifications	U/M	Std. Pkg.
15841	1/2" x 100'	RL	1
15842	3/4" x 100'	RL	1

HVAC

PLUMBING

TOOLS

MISCELLANEOUS

HARDWARE

ORIG. MANUFACTURING

WIRE CONNECTORS

SCREW ON WIRE CONNECTORS

UL Listed
 Color-coded for easy identification
 Threaded funnel entry guides wires into the connector easily
 100 per box



Item No.	Specifications	U/M	Std. Pkg.
15830	Gray 22-14 AWG 300V Max	BX	10
15831	Blue 22-14 AWG 300V Max	BX	10
15832	Orange 22-14 AWG 600V Max	BX	10
15833	Yellow 22-10 AWG 600V Max	BX	10
15834	Red 22-10 AWG 600V Max	BX	10

WINGED WIRE CONNECTORS

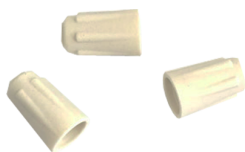
UL Listed
 Color-coded for easy identification
 Peelwire coat, available in socket tools for easy installation of connectors



Item No.	Specifications	U/M	Std. Pkg.
15835	Yellow 18-10 AWG 100/BX	BX	10
15836	Red 18-8 AWG 100/BX	BX	10
15837	Blue 14-6 AWG 50/Box	BX	10

PORCELAIN WIRE CONNECTORS

UL Listed
 Ceramic wire connectors
 Excellent electrical and heat resistant properties
 100 per package



Item No.	Specifications	U/M	Std. Pkg.
15838	Medium Wire Connectors	PK	1

FASTNERS

SHEET METAL PANNING NAILS

Use in construction, daily use and other industry fields
 13GA 19/64" Head Size



Item No.	Specifications	U/M	Std. Pkg.
41101	5lb	PK	1
41102	50lb	PK	1

CONCRETE ANCHORING SYSTEM

Suitable for concrete, brick applications
 Suitable for some preservative-treated wood applications
 One drill bit included in each box



Item No.	Specifications	U/M	Std. Pkg.
41103	3/16" x 1-1/4" Hex Washer Head (100/Bx)	BX	1
41104	1/4" x 1-1/4" Hex Washer Head (100/Bx)	BX	1
41105	1/4" x 1-3/4" Hex Washer Head (100/Bx)	BX	1

PLASTIC ANCHOR KITS

Each kit contains conical plastic wall anchors, tapping screws, and a high-speed masonry drill bit
 Can be used in all types of base materials including concrete and gypsum drywall

SP= Slot Pan Head
 HW= Hex Washer Head



Item No.	Specifications	U/M	Std. Pkg.
41106	3/16" x 7/8" - 8# x 1" Phillips SP Head (100/Bx)	BX	1
41107	1/4" x 1" - 10# x 1" Phillips SP Head (100/Bx)	BX	1
41108	5/16" x 1-1/2" - 14# x 1-1/2" Phillips SP Head (50/Bx)	BX	1
41109	3/16" x 7/8" - 8# x 1" Slotted 1/4" HW Head (100/Bx)	BX	1
41110	1/4" x 1" - 10# x 1" Slotted 5/16" HW Head (100/Bx)	BX	1

MISCELLANEOUS

EXTENSIBLE OILERS

TELESCOPING SPOUT OILER

Finest all-purpose oiler
Telescoping spout reaches everywhere
Perfect all-purpose lubricant for general repair and industrial use
4 OZ. lubricant can also anti rust and antioxidant



Item No.	Specifications	U/M	Std. Pkg.
42505G	Spout Oiler-Generic	EA	12

TAPES

FOAM TAPE

Excellent sealing and resistance to deformation feature, toxic free
Can be used from -40F to 248F
Superior shock absorbing



Item No.	Specifications	U/M	Std. Pkg.
42511	1/8" x 2" x 30' Roll	RL	1

SPRAY PAINTS

Widely used in metal, wood, glass, leather goods, ceramics, ABS plastic and other material objects of the spraying or mending
High coverage, good adhesion, well hardness & flexibility, impact enduring



Item No.	Specifications	U/M	Std. Pkg.
42500	Flat Cold Zinc Galvanize 10 oz	EA	12
42501	Flat Black 10 oz	EA	12
42502	Flat White 10 oz	EA	12
42503	Gloss Black 10 oz	EA	12
42504	Gloss White 10 oz	EA	12

ELECTRICAL TAPE

UL Listed
Matte finish, low lead electric tape.
Used for joining and splicing wires and cables for electrical insulation



Item No.	Specifications	U/M	Std. Pkg.
42512	3/4" x 60' Electrical Tape 7Mil W/Ind Label	RL	10

BRUSHES

CHIP BRUSHES

Use for painting, cleaning, dust-proof
Wood handle
Tinplate Ferrule



Item No.	Specifications	U/M	Std. Pkg.
42516	1-1/2"	EA	36
42517	2"	EA	24
42518	2-1/2"	EA	12
42519	3"	EA	12

HVAC

PLUMBING

TOOLS

MISCELLANEOUS

HARDWARE

ORIG. MANUFACTURING

FILTER DRIERS

LIQUID LINE DRIERS

UL Listed
 High filtering ability
 Perfect protection for the system
 Protect the system from presence of various solid pollutants



Item No.	Specifications	U/M	Std. Pkg.
12501	1/4" Flare, 3 Cubic Inch	EA	1
12502	1/4" Sweat, 3 Cubic Inch	EA	1
12503	1/4" Flare, 5 Cubic Inch	EA	1
12504	1/4" Flare, 5 Cubic Inch	EA	1
12505	3/8" Sweat, 5 Cubic Inch	EA	1
12506	3/8" Sweat, 5 Cubic Inch	EA	1

Item No.	Specifications	U/M	Std. Pkg.
12507	1/4" Sweat, 8 Cubic Inch	EA	1
12508	3/8" Sweat, 8 Cubic Inch	EA	1
12509	1/2" Sweat, 8 Cubic Inch	EA	1
12510	3/8" Flare, 16 Cubic Inch	EA	1
12511	3/8" Sweat, 16 Cubic Inch	EA	1
12512	1/2" Sweat, 16 Cubic Inch	EA	1

Item No.	Specifications	U/M	Std. Pkg.
12513	3/8" Flare, 30 Cubic Inch	EA	1
12514	3/8" Sweat, 30 Cubic Inch	EA	1
12515	1/2" Sweat, 30 Cubic Inch	EA	1
12516	5/8" Flare, 30 Cubic Inch	EA	1
12517	5/8" Sweat, 30 Cubic Inch	EA	1

SUCTION LINE DRIERS

UL Listed
 Able to dissolve pollutants such as dirt
 Corrosion resistant painting
 Solid copper interface



Item No.	Specifications	U/M	Std. Pkg.
12520	5/8" Sweat, 16 Cubic Inch	EA	1
12521	3/4" Sweat, 16 Cubic Inch	EA	1
12522	7/8" Sweat, 16 Cubic Inch	EA	1
12523	1-1/8" Sweat, 30 Cubic Inch	EA	1

Item No.	Specifications	U/M	Std. Pkg.
12524	1-3/8" Sweat, 54 Cubic Inch	EA	1
12525	3/4" Sweat, 30 Cubic Inch	EA	1
12526	7/8" Sweat, 30 Cubic Inch	EA	1
12528	5/8" Sweat, 30 Cubic Inch	EA	1

HVAC
 PLUMBING
 TOOLS
 MISCELLANEOUS
 HARDWARE
 ORIG. MANUFACTURING

STRAPS

P.P. WEBBING HANGER STRAPS

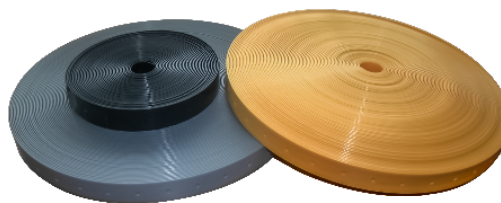
Available in black & silver.
Use for hanging flexible ducting and so on.
High strength, fine texture & dyeing uniformity.



Item No.	Specifications	U/M	Std. Pkg.
18622	1-3/4" x 100 Yards, Black	RL	24
18628	3" x 100 Yards, Black	RL	8
18632	1-3/4" x 100 Yards, Silver	RL	24
18633	3" x 100 Yards, Silver	RL	8

PLASTIC HANGING STRAPS

Nail holes are 1/8" in diameter and spaced 3/4" apart
High strength and flexible, use for pipe hanger, duct hanger, tubing strap, etc.



Item No.	Specifications	U/M	Std. Pkg.
21010	3/4" x 10', Gray	RL	1
21011	3/4" x 25', Gray	RL	1
21012	3/4" x 50', Gray	RL	1
21013	3/4" x 10', Black	RL	1
21014	3/4" x 25', Black	RL	1
21015	3/4" x 50', Black	RL	1
18639	3/4" x 100', Gray	RL	20
18640	3/4" x 100', Yellow	RL	20

METAL DUCT STRAPS

Galvanized Steel for hanging flexible ducting



Item No.	Specifications	U/M	Std. Pkg.
18634	1" x 100' 30GA	RL	1
18635	1" x 100' 26GA	RL	1
18636	1" x 100' 24GA	RL	1
18644	1" x 100' 22GA	RL	1
18637	1-1/2" x 100' 30GA	RL	1
18638	1-1/2" x 100' 26GA	RL	1

PLUMBER'S TAPES

Metal duct hanging straps with holes
Galvanized Steel with alternating nail & bolt holes



Item No.	Specifications	U/M	Std. Pkg.
18641	3/4" x 10' 28GA	RL	1
18642	3/4" x 50' 28GA	RL	1
18643	3/4" x 100' 28GA	RL	1

VENTILATION PRODUCTS

DUCT FANS

Portable, lightweight and can be installed anywhere
Long service life
Operates quietly



Item No.	Specifications	U/M	Std. Pkg.
22102	6", 125V	EA	8
22103	8", 125V	EA	8
22104	10", 125V	EA	8
22105	12", 125V	EA	8
22106	14", 125V	EA	8

The plug-in duct stat temperature sensitive switch simplifies installation of inline duct fans
Automatic on/off for heating/cooling with an adjustable temperature range
Mounts on duct or wall



Item No.	Specifications	U/M	Std. Pkg.
22110	Plug-In Thermostat	EA	1

CONCENTRIC VENT KITS

Vents simplify installation
Saves time and money
Available in 2", 3" and 4" intake vent sizes

Item No.	Specifications	U/M	Std. Pkg.
22152	2"	EA	4
22153	3"	EA	4
22154	4"	EA	4



HORIZONTAL VENT KITS

Water heater accessories

Item No.	Specifications	U/M	Std. Pkg.
22155	2"	EA	6
22156	3"	EA	6



VENTILATION PRODUCTS

MOTORIZED DAMPERS

Low voltage wiring
Easy and safe operation
Excellent energy-saving performance



Item No.	Specifications	U/M	Std. Pkg.
22111	6"	EA	1
22112	8"	EA	1
22113	10"	EA	1
22114	12"	EA	1

VERSA CAP MULTI LAYERS VENT CAPS

Adjustable aluminum versa cap
Recommended for flue, hot stack or b-vent installations
Non-clogging positive draft design



Item No.	Specifications	U/M	Std. Pkg.
22126	2-7/8" - 5" Vent Cap	EA	12
22127	4-7/8" - 7" Vent Cap	EA	12
22128	6-7/8" - 9" Vent Cap	EA	12
22129	8-7/8" - 11" Vent Cap	EA	6
22130	11-7/8" - 14-1/2" Vent Cap	EA	2

SMOKE EMITTERS

SMOKE PENS

Dense white smoke for easy viewing of air flow and leaks
Great for blower door tests, HVAC balancing, room pressure tests and bump-testing smoke detectors
Small, portable, saves your time & money
Safe, non-toxic, clean, low odor



Item No.	Specifications	U/M	Std. Pkg.
22505	Smoke Pen With 6 Wicks Package	EA	1
22506	Smoke Pen Refill Pack	EA	1

STANDARD SMOKE EMITTERS

Emit a dense, safe, oil-free, non-toxic, clean, low odor smoke
Use to test and balance air flows
Smoke cartridges are non-explosive



Item No.	Specifications	U/M	Std. Pkg.
22501	150 CUFT 45 Seconds Burn Time, 10/Pk	PK	1
22502	600 CUFT 90 Seconds Burn Time, 10/Pk	PK	1
22503	1200 CUFT 3 Minutes Burn Time, 5/Pk	PK	1
22504	2500 CUFT 4 Minutes Burn Time, 5/Pk	PK	1

HVAC

PLUMBING

TOOLS

MISCELLANEOUS

HARDWARE

ORIG. MANUFACTURING