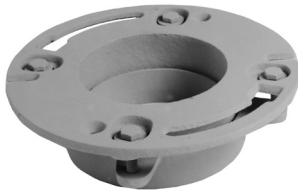




Cast Iron Closet Flanges

“Quick Set”

Push on either cast iron or plastic DWV. Stainless steel bolts and washers tighten neoprene gasket.



REGULAR STYLE

| PART NUMBER | SIZE & DEPTH |
|-------------|--------------|
| 40320 | 3" x 2" |
| 40420 | 4" x 2" |
| 40440 | 4" x 4" |

WEST COAST STYLE Has Built In Test Cap

| PART NUMBER | SIZE & DEPTH |
|-------------|--------------|
| 296 | 4" x 2" |
| 297 | 4" x 3" |
| 298 | 4" x 4" |



2" Offset Caulk - No Hub



| PART NUMBER | SIZE & DEPTH | CONNECTION |
|-------------|--------------|------------|
| 43441 | 4" x 4" | No-Hub |

3/4" Offset Quick Set

Offsets to front or back



| PART NUMBER | SIZE & DEPTH |
|-------------|--------------|
| 299 | 4" x 2" |

4" Brass Closet Flanges



49440



49443



49441

| PART NUMBER | SIZE & DEPTH | STYLE |
|-------------|--------------|-------------|
| 49440 | 4" | 14oz. |
| 49441 | 4" | 1-1/8" Deep |
| 49443 | 4" x 1-1/2" | 3" Reducing |

For use with lead bends