

# Model NRC111 Series Residential Condensing Tankless Water Heater Specification Sheet

- **Standard Input** - gas consumption ranges from 11,000 BTU/h to 199,900 BTU/h
- **Capacity Range** - flow rates from 0.5 gpm up to 11.1 gpm
- **Compact Design** - ANSI Z21.10.3/CSA 4.3 certified design that can be wall-mounted indoors or installed outdoors with an -SV model using the optional Vent Cap
- **Durable Steel Casing with Polyester Coating**
- **Heat Exchanger** - manufactured with commercial grade copper, 25% thicker piping than standard models
- **Venting Options** - available in Power Vent (-SV) or Direct Vent (-DV) model that uses 3" or 4" Schedule 40 PVC/CPVC pipe
- **Direct Electronic Ignition**
- **Quick-Connect** - two identical units can be linked together by using the optional Quick Connect Cord for twice the hot water capacity
- **Energy Factor** - 0.91 (NG) 0.93 (LP) for SV model  
0.92 (NG) 0.94 (LP) for DV model
- **Thermal Efficiency** - fully condensing, 93% efficient for use with natural gas or propane
- **Temperature Controls** - includes remote thermostat that can precisely adjust the output temperature from 100°F to 180°F
- **Power Cord Installation Kit** - 6' power cord is included with -SV and -DV models (*assembly required for SV models*)
- **Safety Devices** - Flame Sensor, Overheat Prevention Device, Lightning Protection Device, Freeze Protection, Neutralizer Overfill
- **Additional Features** - Temperature Lockout, High Elevation Adjustment, Condensate Neutralizer with Monitoring System
- **12-Year\* Limited Heat Exchanger Warranty for Residential Use**
- **5-Year Limited Parts Warranty & 1-Year Reasonable Labor**
- **Approvals** - CSA, UPC\*\*, NSF, Low NOx Approved By SCAQMD (Rule 1146.2), Suitable for Installation in a Manufactured (Mobile) Home\*\*\*



This model is eligible for the Federal tax credit of up to 10% of the water heater and installation costs (up to \$300) when installed in a residence between 1/1/2011 through 12/31/2011

<p><b>Model</b> NRC111 - _____</p> <p><input type="checkbox"/> SV (Standard Vent)</p> <p><input type="checkbox"/> DV (Direct Vent)</p> <p><b>Accessories</b></p> <p><input type="checkbox"/> Birdscreen for 3" PVC/CPVC (#VP3-PVCS)</p> <p><input type="checkbox"/> Birdscreen for 4" PVC/CPVC (#VP4-PVCS)</p> <p><input type="checkbox"/> Outdoor Vent Cap for Condensing -SV Model (#VC-4C)</p> <p><input type="checkbox"/> Isolator Valves (#IK-WV-7)</p> <p><input type="checkbox"/> Pipe Cover (#PC-3S)</p> <p><input type="checkbox"/> Quick Connect Cord (#QC-1)</p>
---

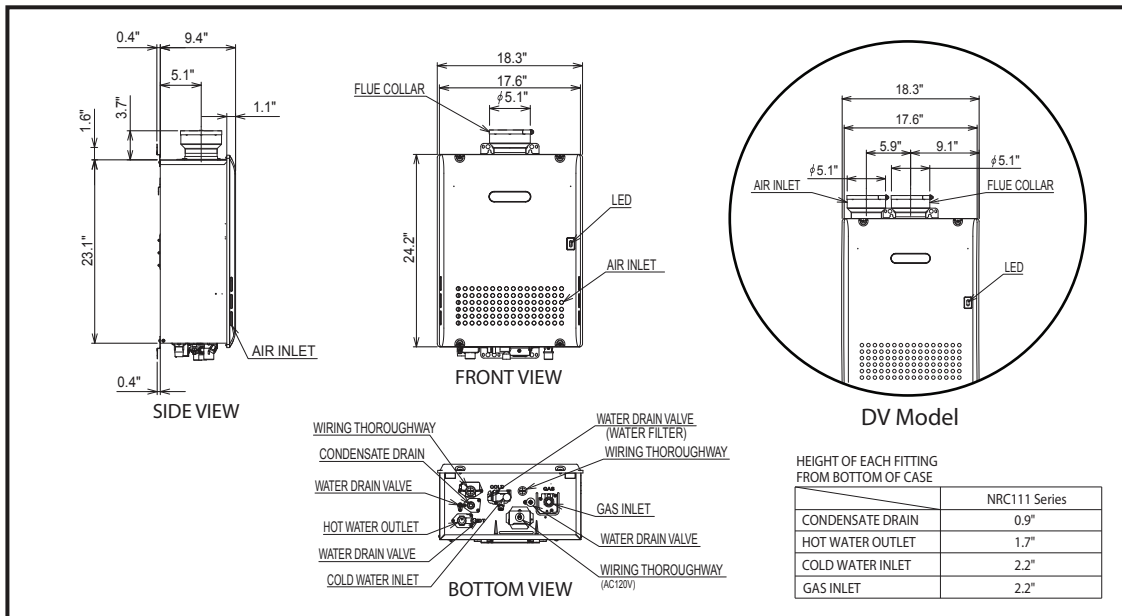


\* Heat Exchanger warranty is maintained at 12 years or 6500 operational hours, whichever occurs first, when used in a single family dwelling in conjunction with a controlled recirculation system (an aquastat being the minimum pump control requirement) in accordance with the Installation Manual. Refer to the Noritz Limited Warranty for complete coverage details

\*\* This product complies with California AB 1953 Low Lead Law and Section 1417(d) of the Safe Drinking Water Act

\*\*\* Manufactured (Mobile) Home approval is valid for **OD** and **DV** models only

## Dimensions

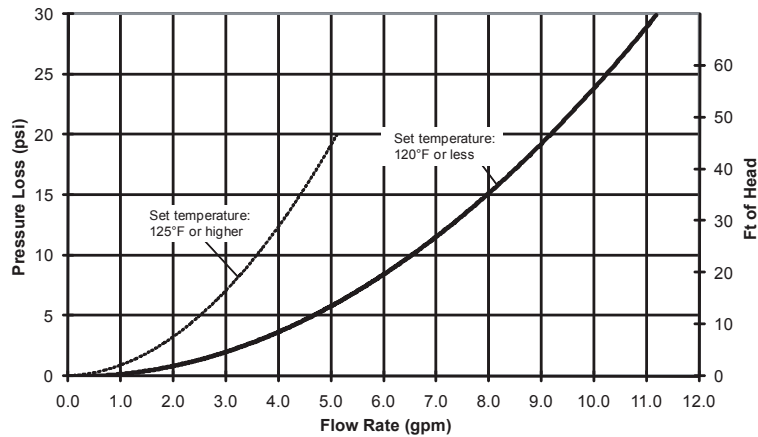


## Flow Rates

Temperature Rise (°F)	30	40	45	50	60	70	80	90	100
Flow Rate (GPM)	11.1	9.3	8.4	7.4	6.2	5.3	4.6	4.1	3.7

*For peak flow rates in shaded areas, contact Noritz for proper setting*

## Pressure Loss



## Specifications

Model Name		NRC111-SV	NRC111-DV
Weight		74 (pounds)	
Water Holding Capacity		0.5 Gallon	
Connection Sizes	Water Inlet	3/4"	
	Hot Water Outlet	3/4"	
	Gas Inlet	3/4"	
Power	Supply	120VAC (60Hz), less than 4 amperes	
	Consumption	NG: 106W LP: 109W Freeze Prevention 213W	NG: 115W LP: 120W Freeze Prevention 213W
Freeze Prevention		Indoor: -30°F Outdoor: -4°F	Indoor: -30°F
Temperature Settings		100-150°F (In 5°F intervals), 160°F, 170°F, *180°F (14 Options)	
Default Temperature Options		120, 130, 140, *180°F (Default is 120°F)	

*\*181.4°F actual output temperature*