

# NIBCO®



## Specialty Valve Products Catalog

C-SVP-1018

Gate, Check, and Ball Valves along with Supply Stops, Sillcocks, and Hose Bibbs for Residential Applications



**QUALITY PRODUCTS SINCE 1904**

A recognized brand leader bringing flow control products and technologies to market, NIBCO has a history of success and innovation in the plumbing industry.

Headquartered in Elkhart, Indiana, we operate multiple manufacturing plants and distribution centers strategically located throughout the United States and globally, and offer more than 36,000 SKUs, including our NIBCO® family brands, Webstone®, Chemtrol® and Sure Seal®.

We have vertically integrated manufacturing, distribution and networked communications to provide a seamless source of information and service, 24/7. We place great emphasis on personal connections with our factory direct sales, live customer service and technical service support. We also offer unique programs to support our customers' success, including our NIBCO Partner program, Vendor Managed Inventory and EDI for wholesalers.

More than 90 percent of NIBCO-branded products are manufactured in the U.S. using high-quality materials and innovative processes and technologies to improve product performance and quality. For every high-quality valve or fitting made at NIBCO, each is made with pride by the hundreds of NIBCO associates who work there.

Today, NIBCO is a fifth-generation, family- and associate-owned business. Since 1904, we've pioneered many products and processes. As the flow control industry continues to become more demanding, we remain focused on what has made us successful: delivering more than a product and making business better for each of our customers.



**VISIT OUR WEBSITE TO LEARN MORE**



# Table of Contents

Visit our website for the most current information .

|   | Page  |
|---|-------|
| <b>Two Piece Ball Valves</b>                                    |       |
| T/S-580-A .....   | 4     |
| T/S-FP-600-A .....  | 5     |
| S-FP-600-AD .....   | 6     |
| <b>Gas Ball Valves</b>  |       |
| GB1A .....  | 7     |
| GB2A .....  | 7     |
| GBVA38M/GBVA12M .....   | 8     |
| GBVA .....  | 8     |
| GBVA38FL/GBVA12FL .....   | 8     |
| <b>Boiler Drains</b>  |       |
| QT73X .....   | 9     |
| QT74X .....   | 9     |
| 72 .....  | 10    |
| 73-CL .....   | 10    |
| 74-CL .....   | 10    |
| 74-2 .....  | 10    |
| 4464 .....  | 10    |
| <b>Hose Bibbs</b>   |       |
| QT54X .....   | 11    |
| QT55X .....   | 11    |
| QT56X .....   | 11    |
| QT57X .....   | 11    |
| <b>Garden Valves</b>  |       |
| 61 .....  | 12    |
| <b>Sillcocks</b>  |       |
| 95C .....   | 13    |
| QT63X .....   | 14    |
| QT763X .....  | 14    |
| QT763IX .....   | 14    |
| <b>Bronze &amp; Brass Gate and Check Valves</b>                 |       |
| T/S-29 .....  | 15    |
| TI/SI-8 .....   | 16    |
| T/S-480 .....   | 17    |
| TI/SI-3 .....   | 18    |
| <b>Washer Box Valves</b>  |       |
| 64L .....   | 19    |
| <b>Plastic Valves</b>   |       |
| 4660-S/T .....  | 20    |
| 4770 .....  | 21    |
| <b>FaucetLock™</b> .....  | 22    |
| <b>Low Pressure Valve Handwheel Options</b> .....               | 23    |
| <b>Metal Connections</b> .....                                  | 24-25 |
| <b>Frostproof Sillcock Maintenance &amp; Installation</b> ..... | 26    |
| <b>Warranty</b> .....   | 27    |

Visit our website for the most current information.

## Consult the NIBCO® Lead Free Valves Catalog for the following products:



- **Lead-Free\* PRO-Stop® Supply Stops**



- **Lead-Free\* Ball Valves**



- **Lead-Free\* Stop & Waste Valves**

\*Weighted average lead content ≤ 0.25%

# Brass Ball Valves

Two-Piece Body • Standard Port • Blowout-Proof Stem • PTFE Seats

**400 PSI/28 Bar Non-Shock Cold Working Pressure**

## MATERIAL LIST

| PART           | SPECIFICATION                      |
|----------------|------------------------------------|
| 1 Body         | Forged Brass <sup>1</sup> CU > 57% |
| 2 End Cap      | Forged Brass <sup>1</sup> CU > 57% |
| 3 Ball Seat    | PTFE                               |
| 4 Ball         | Brass, Chrome Plated               |
| 5 Stem         | Brass                              |
| 6 O-Ring       | Fluorocarbon (FKM)                 |
| 7 Stem Packing | PTFE                               |
| 8 Packing Nut  | Brass                              |
| 9 Lever Handle | Steel, Plated                      |
| 10 Lock Washer | Stainless Steel                    |
| 11 Stem Nut    | Stainless Steel                    |

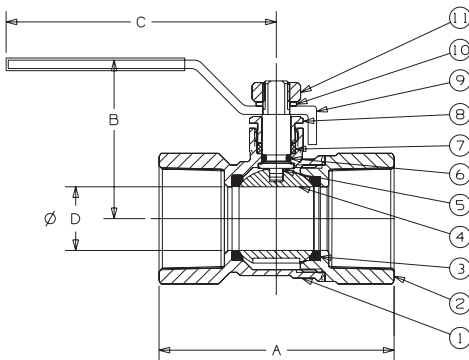
Note: <sup>1</sup> For Material Certification, contact NIBCO Technical Services.



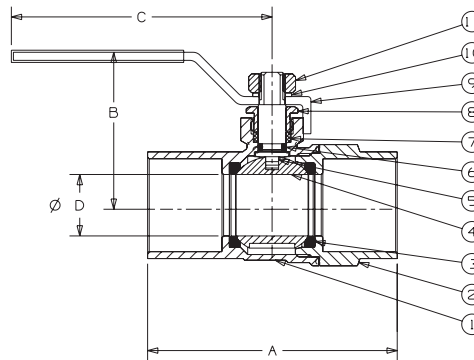
**T-580-A**  
Threaded



**S-580-A**  
Solder



**T-580-A**  
NPT x NPT



**S-580-A**  
C x C

## DIMENSIONS—WEIGHTS—QUANTITIES

| Size | Dimensions |         |          |         |          |         |           |           |     |  | T-580-A Wt. |  | S-580-A Wt. |  | Ctn. Qty |
|------|------------|---------|----------|---------|----------|---------|-----------|-----------|-----|--|-------------|--|-------------|--|----------|
|      | A          | A       | B        | C       | D Port   | Lbs.    | Kg.       | Lbs.      | Kg. |  |             |  |             |  |          |
| ½    | 15         | 2.16 55 | 1.95 50  | 1.58 40 | 3.74 95  | 0.39 10 | 0.36 0.16 | 0.29 0.13 | 16  |  |             |  |             |  |          |
| ¾    | 20         | 2.19 56 | 2.50 64  | 1.79 45 | 3.74 95  | 0.59 15 | 0.48 0.22 | 0.44 0.20 | 12  |  |             |  |             |  |          |
| 1    | 25         | 2.76 70 | 3.04 77  | 2.06 52 | 3.94 100 | 0.75 19 | 0.85 0.39 | 0.71 0.32 | 6   |  |             |  |             |  |          |
| 1¼   | 32         | 3.13 80 | 3.49 89  | 2.54 65 | 4.50 114 | 0.98 25 | 1.14 0.52 | 1.07 0.49 | 4   |  |             |  |             |  |          |
| 1½   | 40         | 3.40 86 | 3.98 101 | 2.59 66 | 5.00 127 | 1.18 30 | 1.71 0.78 | 1.48 0.67 | 2   |  |             |  |             |  |          |
| 2    | 50         | 3.73 95 | 4.76 121 | 2.95 75 | 6.18 157 | 1.46 37 | 2.41 1.09 | 2.41 1.09 | 2   |  |             |  |             |  |          |

Note: S-580-A series to be soft soldered into lines using solder with the melting point not exceeding 470° F. Use of higher temperature solders may damage the seat material.



**WARNING:** This product can expose you to chemicals including lead, which is known to the State of California to cause cancer and birth defects or other reproductive harm. For more information go to [www.P65Warnings.ca.gov](http://www.P65Warnings.ca.gov).

**NOT FOR USE WITH POTABLE DRINKING WATER APPLICATIONS AFTER JANUARY 3, 2014.**

# Brass Ball Valves

Two-Piece Body • Full Port • Blowout-Proof Stem • PTFE Seats  
**1/4"-2" 600 PSI/41.4 Bar Non-Shock Cold Working Pressure**  
**2 1/2"-4" 400 PSI/27.6 Bar Non-Shock Cold Working Pressure**

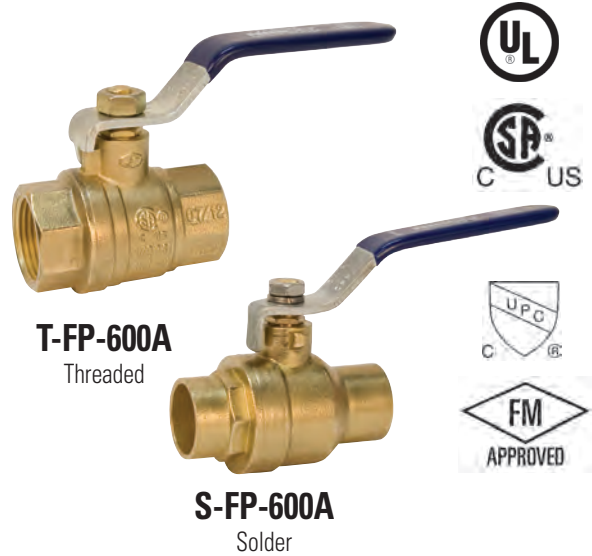
CSA CERTIFIED TO ASME B16.44 AND CR91-002 (THREADED 1/4"-4")  
 • UL LISTED (THREADED 1/4"-4") • FM APPROVED (THREADED 1/4"-2")  
 • CRN: 0C19353.5XX\*

**Threaded**  
 CSA (1/4" - 4"):  
 • CR91-002: 1/2 psig, 2 psig, and 5 psig (these are specific approved categories)  
 • ASME B16.33: 125 psig (maximum)  
 • Temperature is -4° F to 194° F

**Threaded**  
 FM (1/4" - 2"):  
 • 175wvp Threaded

UL, Gas and Oil (1/4" - 4"):  
 • YQNZ, Compressed Gas Shutoff Valves: 250 psi  
 • YRBX, Flammable Liquid Shutoff Valves: 250 psi  
 • YRPV, Gas Shutoff Valves: 250 psi  
 • YSDT, LP-Gas Shutoff Valves: 250 psi  
 • MHKZ, Manual Valves: 250 psi

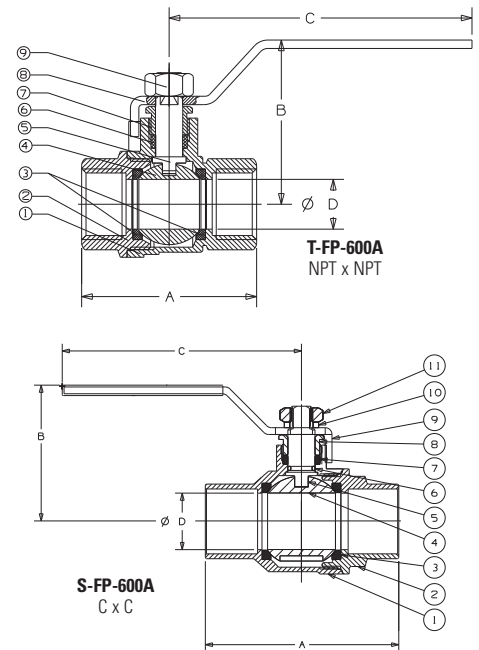
\*Please contact Technical Customer Service for the CRN Jurisdictions/Provinces list



## MATERIAL LIST

| PART                         | SPECIFICATION   |
|------------------------------|---|
| 1. Body                      | Forged Brass <sup>2</sup> CU > 57%                                      |
| 2. End Cap                   | Forged Brass <sup>2</sup> CU > 57%                                      |
| 3. Ball Seat                 | PTFE  |
| 4. Ball                      | Chrome Plated Brass - C46500 (1/4"-1"), Stainless Steel 316 (1 1/4"-4") |
| 5. Stem                      | Brass   |
| 6. O-Ring (Stem Seal)*       | Fluorocarbon (FKM)  |
| 7. Stem Packing              | PTFE  |
| 8. Packing Nut               | Brass   |
| 9. Lever Handle <sup>1</sup> | Steel, Plated   |
| 10. Lock Washer*             | Stainless Steel   |
| 11. Handle Nut <sup>1</sup>  | Stainless Steel   |

Note: \* Parts 6 and 10 are applicable of S-FP-600A only.  
<sup>1</sup> Due to Standard Approvals, Lever Handles and Nuts are not interchangeable between Solder and Threaded.  
<sup>2</sup> For Material Certification, contact NIBCO Technical Services.



## DIMENSIONS—WEIGHTS—QUANTITIES

| Size  | Dimensions |      |     |      |     |      | Port | T-FP-600A |     | S-FP-600A |     | T-FP-600A Ctn. Qty. | S-FP-600N Ctn. Qty. |      |    |       |      |      |      |    |    |
|-------|------------|------|-----|------|-----|------|------|-----------|-----|-----------|-----|---------------------|---------------------|------|----|-------|------|------|------|----|----|
|       | A          | A    | B   | B    | C   | C    |      | Lbs.      | Kg. | Lbs.      | Kg. |                     |                     |      |    |       |      |      |      |    |    |
| 1/4   | 8          | 1.76 | 45  | —    | —   | 1.73 | 44   | —         | —   | 3.54      | 90  | —                   | —                   | .39  | 10 | .33   | .15  | —    | —    | 18 | —  |
| 3/8   | 10         | 1.76 | 45  | 1.75 | 44  | 1.73 | 44   | 1.58      | 40  | 3.54      | 90  | 3.78                | 96                  | .39  | 10 | .30   | .14  | .38  | .17  | 18 | 18 |
| 1/2   | 15         | 2.05 | 52  | 2.01 | 51  | 1.92 | 49   | 1.78      | 45  | 3.54      | 90  | 3.78                | 96                  | .59  | 15 | .44   | .20  | .40  | .18  | 18 | 18 |
| 3/4   | 20         | 2.36 | 60  | 2.74 | 70  | 2.09 | 53   | 2.13      | 54  | 3.78      | 96  | 3.98                | 101                 | .75  | 19 | .66   | .30  | .67  | .30  | 12 | 12 |
| 1     | 25         | 2.76 | 70  | 3.35 | 85  | 2.56 | 65   | 2.52      | 64  | 4.53      | 115 | 4.41                | 112                 | .98  | 25 | 1.10  | .50  | 1.12 | .51  | 6  | 6  |
| 1 1/4 | 32         | 3.31 | 84  | 3.78 | 96  | 2.95 | 75   | 2.65      | 67  | 4.53      | 115 | 5.04                | 128                 | 1.26 | 32 | 1.57  | .71  | 1.49 | .67  | 4  | 4  |
| 1 1/2 | 40         | 3.66 | 93  | 4.42 | 112 | 3.35 | 85   | 3.12      | 79  | 5.51      | 140 | 6.22                | 158                 | 1.57 | 40 | 2.40  | 1.09 | 2.38 | 1.08 | 2  | 2  |
| 2     | 50         | 4.18 | 106 | 5.34 | 136 | 3.68 | 93   | 3.41      | 87  | 5.51      | 140 | 6.22                | 158                 | 1.97 | 50 | 3.37  | 1.53 | 3.62 | 1.64 | 2  | 2  |
| 2 1/2 | 65         | 5.38 | 137 | 6.28 | 160 | 4.76 | 121  | 4.76      | 121 | 8.66      | 220 | 8.66                | 220                 | 2.56 | 65 | 7.60  | 3.45 | 6.36 | 2.88 | 3  | 3  |
| 3     | 75         | 6.04 | 153 | 7.15 | 182 | 5.08 | 129  | 5.08      | 129 | 8.66      | 220 | 8.66                | 220                 | 2.95 | 75 | 9.36  | 4.24 | 8.32 | 3.77 | 2  | 2  |
| 4     | 100        | 7.39 | 188 | —    | —   | 5.87 | 149  | —         | —   | 9.61      | 244 | —                   | —                   | 3.89 | 99 | 16.85 | 7.64 | —    | —    | 1  | —  |

NOT FOR USE WITH POTABLE DRINKING WATER APPLICATIONS AFTER JANUARY 3, 2014.

**WARNING:** This product can expose you to chemicals including lead, which is known to the State of California to cause cancer and birth defects or other reproductive harm. For more information go to www.P65Warnings.ca.gov.

# Brass Ball Valves

Two-Piece Body • Full Port • Blowout-Proof Stem • PTFE Seats • w/ Drain

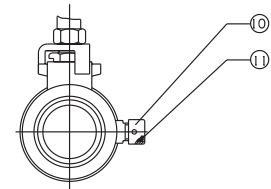
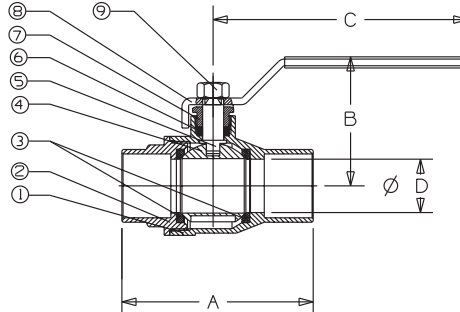
**600 PSI/41.4 Bar Non-Shock Cold Working Pressure**



**S-FP-600-AD**  
Solder

| MATERIAL LIST     |                                    |
|-------------------|------------------------------------|
| PART              | SPECIFICATION                      |
| 1. Body           | Forged Brass <sup>1</sup> CU > 57% |
| 2. End Cap        | Forged Brass <sup>1</sup> CU > 57% |
| 3. Ball Seat      | PTFE                               |
| 4. Ball           | Brass, Chrome Plated               |
| 5. Stem           | Brass                              |
| 6. Stem Packing   | PTFE                               |
| 7. Packing Nut    | Brass                              |
| 8. Lever Handle   | Steel, Plated                      |
| 9. Handle Nut     | Stainless Steel                    |
| 10. Drainable Cap | Brass                              |
| 11. Rubber Seat   | Silicone                           |

Note: <sup>1</sup> For Material Certification, contact NIBCO Technical Services.



**S-FP-600-AD**  
C x C

## DIMENSIONS—WEIGHTS—QUANTITIES

| Size    | Dimensions |         |         |          |        |          |     |     | Weight |     |          |
|---------|------------|---------|---------|----------|--------|----------|-----|-----|--------|-----|----------|
|         | A          |         | B       |          | C      |          | D   |     | Lbs.   | Kg. | Ctn Qty. |
| In. mm. | In.        | mm.     | In.     | mm.      | In.    | mm.      | In. | mm. |        |     |          |
| ½       | 15         | 2.16 55 | 1.67 42 | 3.54 90  | .58 15 | .54 .24  | 20  |     |        |     |          |
| ¾       | 20         | 2.85 72 | 2.03 52 | 4.47 114 | .75 19 | .76 .34  | 12  |     |        |     |          |
| 1       | 25         | 3.38 86 | 2.24 57 | 4.47 114 | .95 24 | 1.07 .49 | 6   |     |        |     |          |

**WARNING:** This product can expose you to chemicals including lead, which is known to the State of California to cause cancer and birth defects or other reproductive harm. For more information go to [www.P65Warnings.ca.gov](http://www.P65Warnings.ca.gov).

NOT FOR USE WITH POTABLE DRINKING WATER APPLICATIONS AFTER JANUARY 3, 2014.

# Gas Ball Valve

## GB10\*/GB1A Female x Female, Lever Handle

- CSA Certified to ½ PSI for indoor appliance connections per ANSI Z21.15/CSA 9.1
- 5 PSI for indoor shutoff per CGA CR91-002 and ASME B16.44
- 600 PSI CWP Rated

### MATERIAL LIST

| PART         | SPECIFICATION                    |
|--------------|----------------------------------|
| 1. Body      | Forged Brass <sup>1</sup> CU>57% |
| 2. End Piece | Forged Brass <sup>1</sup> CU>57% |
| 3. Seat      | PTFE, Glass Reinforced           |
| 4. Ball      | Brass, Chrome Plated             |
| 5. Stem      | Brass                            |
| 6. O-Ring    | Nitrile                          |
| 7. Handle    | Aluminum, Painted Red            |
| 8. Nut       | Steel, Plated                    |
| 9. ID Plate  | Aluminum                         |

### DIMENSIONS—WEIGHT

| Size (In.) | A    | B    | C    | D    | E    | Wt. (lbs) |
|------------|------|------|------|------|------|-----------|
| ¾          | 1.91 | 1.14 | 1.19 | 0.39 | 0.51 | .31       |
| ½          | 2.21 | 1.19 | 1.19 | 0.47 | 0.61 | .36       |
| ¾          | 2.45 | 1.26 | 1.19 | 0.59 | 0.67 | .47       |
| 1          | 2.76 | 1.36 | 1.19 | 0.75 | 0.71 | .91       |

\*GB10, 3/8" not CSA certified

<sup>1</sup> For material certification, contact NIBCO Technical Services

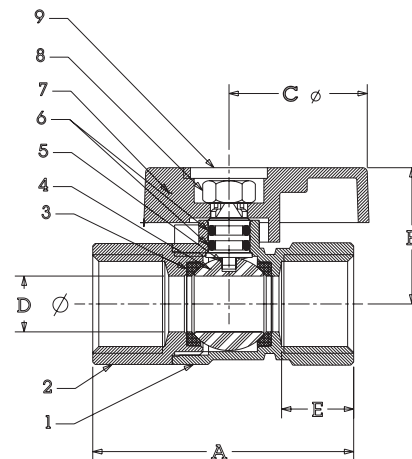
**NOT FOR USE WITH POTABLE DRINKING WATER APPLICATIONS AFTER JANUARY 3, 2014.**



**WARNING:** This product can expose you to chemicals including lead, which is known to the State of California to cause cancer and birth defects or other reproductive harm. For more information go to [www.P65Warnings.ca.gov](http://www.P65Warnings.ca.gov).



**GB1A**



## GB2A Female x Female, Square Head

- CSA Certified to ½ PSI for indoor appliance connections per ANSI Z21.15/CSA 9.1
- 5 PSI for indoor shutoff per CGA CR91-002 and ASME B16.44
- 600 PSI CWP Rated

### MATERIAL LIST

| PART         | SPECIFICATION                    |
|--------------|----------------------------------|
| 1. Body      | Forged Brass <sup>1</sup> CU>57% |
| 2. End Piece | Forged Brass <sup>1</sup> CU>55% |
| 3. Seat      | PTFE, Glass Reinforced           |
| 4. Ball      | Brass, Chrome Plated             |
| 5. Stem      | Brass                            |
| 6. O-Ring    | Nitrile                          |
| 7. Handle    | Copper Alloy Painted Red         |
| 8. Screw     | Steel, plated                    |

### DIMENSIONS—WEIGHT

| Size (In.) | A    | B    | C   | D   | E   | Wt. (lbs) |
|------------|------|------|-----|-----|-----|-----------|
| ½          | 2.21 | 1.44 | .95 | .47 | .61 | .34       |
| ¾          | 2.45 | 1.56 | .95 | .59 | .67 | .45       |

Note: <sup>1</sup> For Material Certification, contact NIBCO Technical Services.

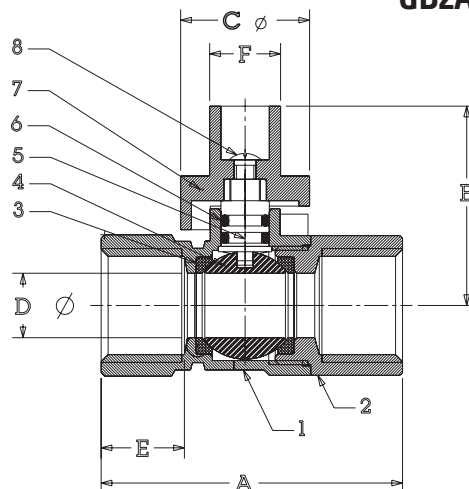


**WARNING:** This product can expose you to chemicals including lead, which is known to the State of California to cause cancer and birth defects or other reproductive harm. For more information go to [www.P65Warnings.ca.gov](http://www.P65Warnings.ca.gov).

**NOT FOR USE WITH POTABLE DRINKING WATER APPLICATIONS AFTER JANUARY 3, 2014.**



**GB2A**



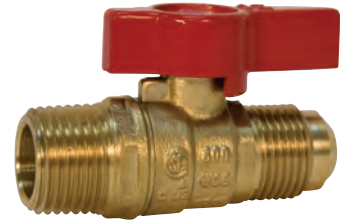
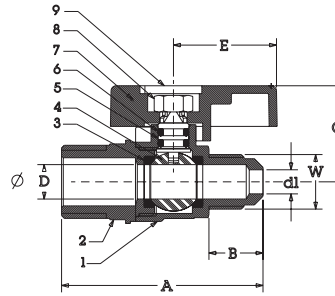
# Gas Ball Valve

## GBV38M\*/GBVA12M — Flare x MPT, Lever Handle

- CSA Certified to ½ PSI for indoor appliance connections per ANSI Z21.15/CSA 9.1
- 5 PSI for indoor shut-off per ASME B16.44 and CGA CR91-002

### MATERIAL LIST

| PART         | SPECIFICATION                    |
|--------------|----------------------------------|
| 1. Body      | Forged Brass <sup>1</sup> CU>57% |
| 2. End Piece | Forged Brass <sup>1</sup> CU>57% |
| 3. Seat      | PTFE, Glass Reinforced           |
| 4. Ball      | Brass, Chrome Plated             |
| 5. Stem      | Brass                            |
| 6. O-Ring    | Nitrile                          |
| 7. Handle    | Aluminum, Painted Red            |
| 8. Nut       | Steel, Plated                    |
| 9. ID Plate  | Aluminum                         |



### DIMENSIONS—WEIGHT

| Size (In.) | A    | B   | C    | d <sup>1</sup> | D   | E    | W          | Wgt |
|------------|------|-----|------|----------------|-----|------|------------|-----|
| 3/8        | 2.35 | .62 | 1.14 | .28            | .39 | 1.19 | 5/8-18 UNF | .34 |
| 1/2        | 2.47 | .75 | 1.14 | .39            | .39 | 1.19 | 3/4-16 UNF | .36 |

\* GBV3/8 and GBV12FL not CSA certified

Note: <sup>1</sup> For Material Certification, contact NIBCO Technical Services.

NOT FOR USE WITH POTABLE DRINKING WATER APPLICATIONS AFTER JANUARY 3, 2014.



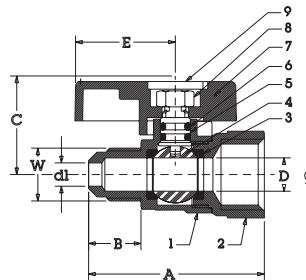
**WARNING:** This product can expose you to chemicals including lead, which is known to the State of California to cause cancer and birth defects or other reproductive harm. For more information go to [www.P65Warnings.ca.gov](http://www.P65Warnings.ca.gov).

## GBVA — Flare x FPT, Lever Handle

- CSA Certified to ½ PSI for indoor appliance connections per ANSI Z21.15/CSA 9.1
- 5 PSI for indoor shut-off per ASME B16.44 and CGA CR91-002

### MATERIAL LIST

| PART         | SPECIFICATION                    |
|--------------|----------------------------------|
| 1. Body      | Forged Brass <sup>1</sup> CU>57% |
| 2. End Piece | Forged Brass <sup>1</sup> CU>57% |
| 3. Seat      | PTFE, Glass Reinforced           |
| 4. Ball      | Brass, Chrome Plated             |
| 5. Stem      | Brass                            |
| 6. O-Ring    | Nitrile                          |
| 7. Handle    | Aluminum, Painted Red            |
| 8. Ball Seat | PTFE                             |
| 9. Nut       | Steel, Plated                    |
| 10. ID Plate | Aluminum                         |



### DIMENSIONS—WEIGHT

| Size (In.) | A    | B   | C    | d <sup>1</sup> | D   | E    | W          | Wgt |
|------------|------|-----|------|----------------|-----|------|------------|-----|
| 3/8        | 2.13 | .62 | 1.14 | .28            | .39 | 1.19 | 5/8-18 UNF | .35 |
| 1/2        | 2.25 | .75 | 1.14 | .39            | .39 | 1.19 | 3/4-16 UNF | .44 |

Note: <sup>1</sup> For Material Certification, contact NIBCO Technical Services.

NOT FOR USE WITH POTABLE DRINKING WATER APPLICATIONS AFTER JANUARY 3, 2014.



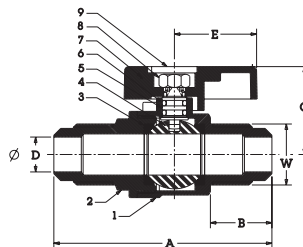
**WARNING:** This product can expose you to chemicals including lead, which is known to the State of California to cause cancer and birth defects or other reproductive harm. For more information go to [www.P65Warnings.ca.gov](http://www.P65Warnings.ca.gov).

## GBVA38FL/GBV12FL\* — Flare x Flare, Lever Handle

- CSA Certified to ½ PSI for indoor appliance connections per ANSI Z21.15/CSA 9.1
- 5 PSI for indoor shut-off per ASME B16.44 and CGA CR91-002

### MATERIAL LIST

| PART         | SPECIFICATION                    |
|--------------|----------------------------------|
| 1. Body      | Forged Brass <sup>1</sup> CU>57% |
| 2. End Piece | Forged Brass <sup>1</sup> CU>57% |
| 3. Seat      | PTFE, Glass Reinforced           |
| 4. Ball      | Brass, Chrome Plated             |
| 5. Stem      | Brass                            |
| 6. O-Ring    | Nitrile                          |
| 7. Handle    | Aluminum, Painted Red            |
| 8. Ball Seat | PTFE                             |
| 9. Nut       | Steel, Plated                    |
| 10. ID Plate | Aluminum                         |



### DIMENSIONS—WEIGHT

| Size (In.) | A    | B   | C    | D   | E    | W          | Wgt |
|------------|------|-----|------|-----|------|------------|-----|
| 3/8        | 2.37 | .62 | 1.14 | .28 | 1.19 | 5/8-18 UNF | .36 |
| 1/2        | 2.62 | .75 | 1.14 | .39 | 1.19 | 3/4-16 UNF | .47 |

\* GBV3/8 and GBV12FL not CSA certified

Note: <sup>1</sup> For Material Certification, contact NIBCO Technical Services.

NOT FOR USE WITH POTABLE DRINKING WATER APPLICATIONS AFTER JANUARY 3, 2014.



**WARNING:** This product can expose you to chemicals including lead, which is known to the State of California to cause cancer and birth defects or other reproductive harm. For more information go to [www.P65Warnings.ca.gov](http://www.P65Warnings.ca.gov).

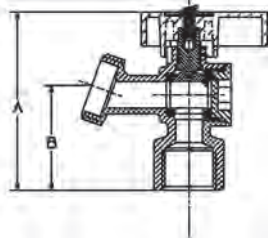
# Quarter-Turn Boiler Drains

125 lb. CWP to 100°F

Maximum Temperature 180°F

## QUARTER-TURN BOILER DRAINS MATERIAL LIST

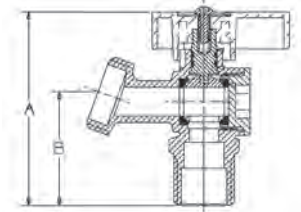
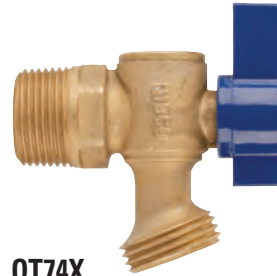
| PART     | SPECIFICATION               |
|----------|-----------------------------|
| Screw    | Steel                       |
| I.D. Tag | Aluminum                    |
| Handle   | Zinc                        |
| Stem     | Brass ASTM B 16 UNS C36000  |
| O-Ring   | Nitrile                     |
| Seat     | PTFE                        |
| Ball     | Brass ASTM B 16 UNS C36000  |
| Adapter  | Brass ASTM B 283 UNS C37700 |
| Body     | Brass ASTM B 283 UNS C37700 |



**QT73X**

| DESCRIPTION                 | NOM. SIZE | DIMENSIONS |       | APPROX. NET WT. |
|-----------------------------|-----------|------------|-------|-----------------|
|                             |           | A          | B     |                 |
| BOILER DRAIN<br>FIP to Hose | 1/2       | 2.64"      | 1.57" | .42 lb          |
|                             | 3/4       | 2.72"      | 1.65" | .46 lb          |

IAPMO Listed to cUPC®



**QT74X**

| DESCRIPTION                                   | NOM. SIZE | DIMENSIONS |       | APPROX. NET WT. |
|---|-----------|------------|-------|-----------------|
|   |           | A          | B     |                 |
| BOILER DRAIN<br>Cup or MIP<br>Threads to Hose | 1/2"      | 2.64"      | 1.57" | .40 lb          |
|   | 3/4"*     | 2.72"      | 1.65" | .42 lb          |

IAPMO Listed to cUPC®

\* 3/4" furnished in male threads only



**WARNING:** This product can expose you to chemicals including lead, which is known to the State of California to cause cancer and birth defects or other reproductive harm. For more information go to [www.P65Warnings.ca.gov](http://www.P65Warnings.ca.gov).

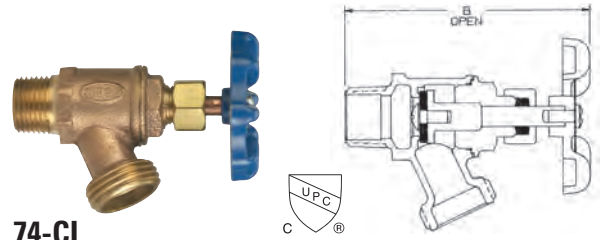
**NOT FOR USE WITH POTABLE DRINKING WATER APPLICATIONS AFTER JANUARY 3, 2014.**

# Multi-Turn Boiler Drains

125 lb. CWP to 100°F  
Maximum Temperature 180°F

## MULTI-TURN MATERIALS LIST

| PART            | SPECIFICATION                        |
|-----------------|--------------------------------------|
| Body            | Cast Copper - Based Alloy C84400     |
| Bonnet          | Cast Copper - Based Alloy C84400     |
| Stem            | Cold-formed Copper Alloy             |
| Seat Disc       | Buna-N                               |
| Seat Disc Screw | Stainless Steel, Type 410            |
| Packing Nut     | Free Cutting Brass - ASTM B 16       |
| Packing         | Graphite Impregnated, Asbestos-Free  |
| Handwheel       | Epoxy Coated Zinc Alloy              |
| Handwheel Screw | Carbon Steel - Clear Chromate Finish |

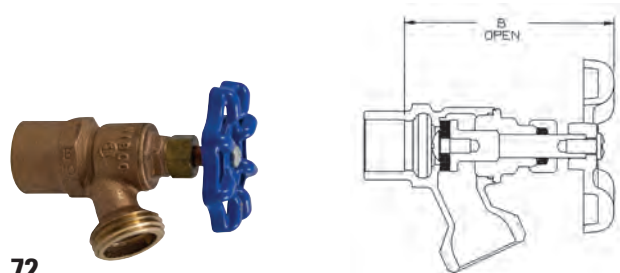


74-CL

| DESCRIPTION                                       | NOM. SIZE | DIMENSIONS | APPROX. NET WT. |
|---|-----------|------------|-----------------|
|   |           | B          |                 |
| Boiler Drain<br>Copper or Male<br>Threads to Hose | 1/2"      | 3 11/16"   | .4 lb           |
|   | 3/4"*     | 3 3/4"     | .45 lb          |

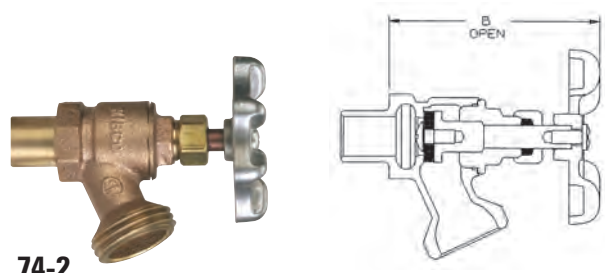
IAPMO Listed to cUPC®

\* 3/4" furnished in male threads only



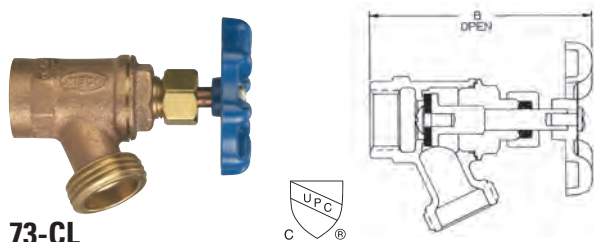
72

| DESCRIPTION                 | NOM. SIZE | DIMENSIONS | APPROX. NET WT. |
|-----------------------------|-----------|------------|-----------------|
|                             |           | B          |                 |
| Boiler Drain<br>Cup to Hose | 1/2"      | 3 1/16"    | .40 lb          |
|                             | 3/4"*     | 2 13/16"   | .40 lb          |



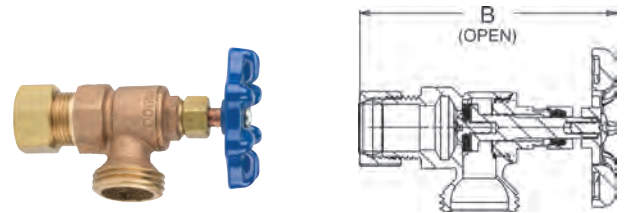
74-2

| DESCRIPTION                 | NOM. SIZE | DIMENSIONS | APPROX. NET WT. |
|-----------------------------|-----------|------------|-----------------|
|                             |           | B          |                 |
| Boiler Drain<br>Fit to Hose | 1/2"      | 3 3/8"     | .40 lb          |



73-CL

| DESCRIPTION                      | NOM. SIZE | DIMENSIONS | APPROX. NET WT. |
|----------------------------------|-----------|------------|-----------------|
|                                  |           | B          |                 |
| Boiler Drain<br>Threaded to Hose | 1/2"      | 3 1/4"     | .50 lb          |
|                                  | 3/4"      | 3 5/16"    | .60 lb          |



4464

| DESCRIPTION                         | NOM. SIZE | DIMENSIONS | APPROX. NET WT. |
|-------------------------------------|-----------|------------|-----------------|
|                                     |           | B          |                 |
| Boiler Drain<br>Compression to Hose | 1/2"      | 3 1/4"     | .50 lb          |

**WARNING:** This product can expose you to chemicals including lead, which is known to the State of California to cause cancer and birth defects or other reproductive harm. For more information go to [www.P65Warnings.ca.gov](http://www.P65Warnings.ca.gov).

**NOT FOR USE WITH POTABLE DRINKING WATER APPLICATIONS AFTER JANUARY 3, 2014.**

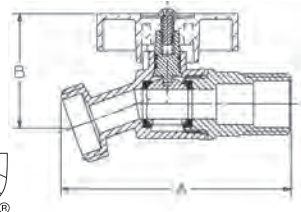
# Hose Bibbs

125 lb. CWP to 100°F

Maximum Temperature 180°F

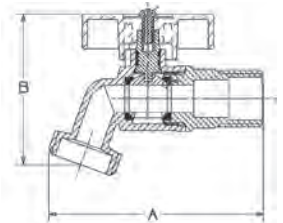
## QUARTER TURN HOSE BIBBS MATERIALS LIST

| PART     | SPECIFICATION               |
|----------|-----------------------------|
| Screw    | Steel                       |
| I.D. Tag | Aluminum                    |
| Handle   | Zinc                        |
| Stem     | Brass ASTM B 16 UNS C36000  |
| O-Ring   | Nitrile                     |
| Seat     | PTFE                        |
| Ball     | Brass ASTM B 16 UNS C36000  |
| Adapter  | Brass ASTM B 283 UNS C37700 |
| Body     | Brass ASTM B 283 UNS C37700 |



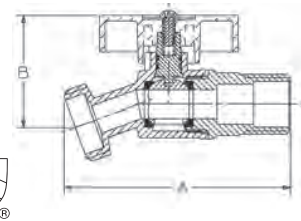
**QT54X**

| DESCRIPTION                                     | Nom. Size | DIMENSIONS |       | APPROX. NET WT. |
|---|-----------|------------|-------|-----------------|
|   |           | A          | B     |                 |
| <b>NO-KINK HOSE BIBB</b><br>Male or Cup to Hose | 1/2       | 3.15"      | 1.54" | .40 lb          |
|   | 3/4       | 3.15"      | 1.54" | .42 lb          |



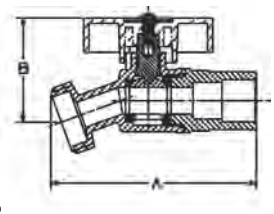
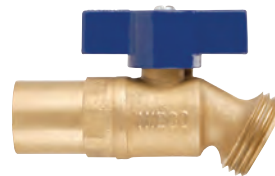
**QT56X**

| DESCRIPTION  | Nom. Size | DIMENSIONS |       | APPROX. NET WT. |
|--|-----------|------------|-------|-----------------|
|  |           | A          | B     |                 |
| <b>HOSE BIBB</b><br>Cup or Male to Hose<br>Male Thread to Hose | 1/2       | 3.15"      | 2.17" | .40 lb          |
|  | 3/4       | 3.15"      | 2.14" | .42 lb          |



**QT55X**

| DESCRIPTION                             | Nom. Size | DIMENSIONS |       | APPROX. NET WT. |
|---|-----------|------------|-------|-----------------|
|   |           | A          | B     |                 |
| <b>NO-KINK HOSE BIBB</b><br>FIP to Hose | 1/2       | 2.87"      | 1.54" | .40 lb          |
|   | 3/4       | 3.15"      | 1.54" | .45 lb          |



**QT57X**

| DESCRIPTION   | Nom. Size    | DIMENSIONS |       | APPROX. NET WT. |
|---|--------------|------------|-------|-----------------|
|   |              | A          | B     |                 |
| <b>NO-KINK HOSE BIBB</b><br>1/2 Cup or 3/4 Ftg. to Hose | 1/2" or 3/4" | 3.11"      | 1.54" | .42 lb          |

**WARNING:** This product can expose you to chemicals including lead, which is known to the State of California to cause cancer and birth defects or other reproductive harm. For more information go to [www.P65Warnings.ca.gov](http://www.P65Warnings.ca.gov).

**NOT FOR USE WITH POTABLE DRINKING WATER APPLICATIONS AFTER JANUARY 3, 2014.**

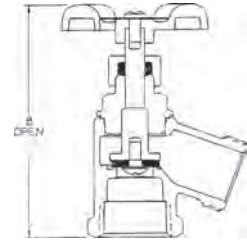
# Garden Valves

125 lb. CWP to 100°F

Maximum Temperature 180°F

## GARDEN VALVE MATERIALS LIST

| PART            | SPECIFICATION                        |
|-----------------|--------------------------------------|
| Body            | Cast Copper - Based Alloy C84400     |
| Bonnet          | Cast Copper - Based Alloy C84400     |
| Stem            | Cold-formed Copper Alloy             |
| Seat Disc       | Buna-N                               |
| Seat Disc Screw | Stainless Steel, Type 410            |
| Packing Nut     | Free Cutting Brass - ASTM B 16       |
| Packing         | Graphite Impregnated, Asbestos-Free  |
| Handwheel       | Epoxy Coated Zinc Alloy              |
| Handwheel Screw | Carbon Steel - Clear Chromate Finish |



61

| DESCRIPTION                        | Nom. Size | DIMENSIONS | APPROX. NET WT. |
|------------------------------------|-----------|------------|-----------------|
|                                    |           | B          |                 |
| Bent Nose Hose Bibb<br>FIP to Hose | 1/2"      | 3 5/8"     | .60 lb          |
|                                    | 3/4"      | 3 3/4"     | .70 lb          |

**WARNING:** This product can expose you to chemicals including lead, which is known to the State of California to cause cancer and birth defects or other reproductive harm. For more information go to [www.P65Warnings.ca.gov](http://www.P65Warnings.ca.gov).

**NOT FOR USE WITH POTABLE DRINKING WATER APPLICATIONS AFTER JANUARY 3, 2014.**

# Fig. 95C Frostproof Sillcock

Chrome Plated Brass Body • 180° Turn • Ceramic Seats • Built in Lockshield • Flow Indicator on Metal Handwheel

ASSE 1019-C

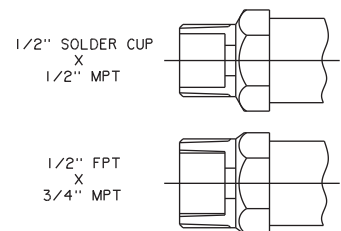
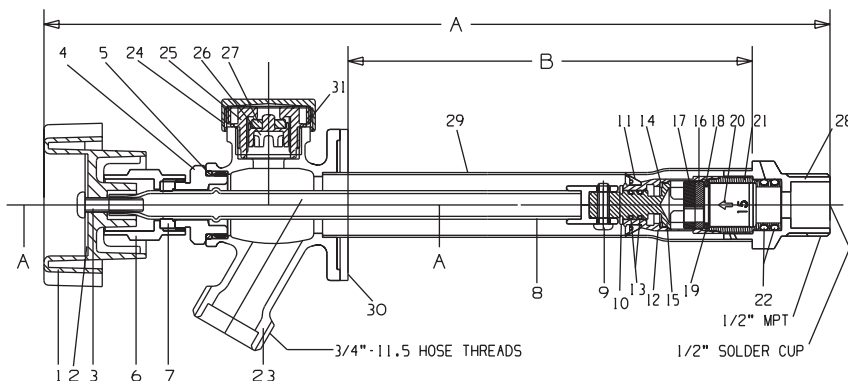
## MATERIAL LIST

| PART                   | SPECIFICATION             |
|------------------------|---------------------------|
| 1. Handwheel           | Aluminum B85 Epoxy Coated |
| 2. ID Plate            | Aluminum                  |
| 3. Screw               | Brass B16 C36000          |
| 4. Bonnet              | Brass B16 C36000          |
| 5. O-Ring              | NBR                       |
| 6. Lockshield          | Brass B16 C36000          |
| 7. Washer Seal         | NBR                       |
| 8. Stem                | Brass B135 C33000         |
| 9. Screw               | 304 SS                    |
| 10. V-Clip             | 304 SS                    |
| 11. V-Cup Seal         | NBR                       |
| 12. Housing            | Brass B16 C36000          |
| 13. O-Ring             | NBR                       |
| 14. Seal Washer        | PTFE                      |
| 15. Inner Stem         | Brass B16 C36000          |
| 16. Seat 180°          | Ceramic                   |
| 17. Movement 180°      | Ceramic                   |
| 18. Washer             | Silicon Rubber            |
| 19. Washer             | Brass B16 C36000          |
| 20. Spring Check Valve | 304 SS                    |
| 21. Valve Base         | Brass B16 C36000          |
| 22. O-Ring             | FKM                       |
| 23. Cast Body          | Brass B584 C85700         |
| 24. Vent Cap           | POM - Chrome Plated       |
| 25. Vent Body          | POM                       |
| 26. Poppet             | POM                       |
| 27. Vent Seat          | NBR                       |
| 28. Inlet End          | Brass B16 C36000          |
| 29. Body Tube          | Brass B135 C33000         |
| 30. Siding Plate       | Plastic                   |
| 31. O-Ring             | NBR                       |



## DIMENSIONS — WEIGHTS

| Size (In.) | A      | B  | Wt. Lbs. | Size (In.) | A      | B  | Wt. Lbs. |
|------------|--------|----|----------|------------|--------|----|----------|
| 1/2 x 4    | 9 3/4  | 4  | 1.28     | 3/4 x 4    | 9 3/4  | 4  | 1.31     |
| 1/2 x 6    | 11 3/4 | 6  | 1.37     | 3/4 x 6    | 11 3/4 | 6  | 1.40     |
| 1/2 x 8    | 13 3/4 | 8  | 1.44     | 3/4 x 8    | 13 3/4 | 8  | 1.47     |
| 1/2 x 10   | 15 3/4 | 10 | 1.49     | 3/4 x 12   | 17 3/4 | 12 | 1.62     |
| 1/2 x 12   | 17 3/4 | 12 | 1.54     |            |        |    |          |
| 1/2 x 14   | 19 3/4 | 14 | 1.60     |            |        |    |          |



**WARNING:** This product can expose you to chemicals including lead, which is known to the State of California to cause cancer and birth defects or other reproductive harm. For more information go to [www.P65Warnings.ca.gov](http://www.P65Warnings.ca.gov).

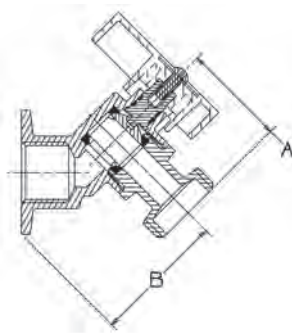
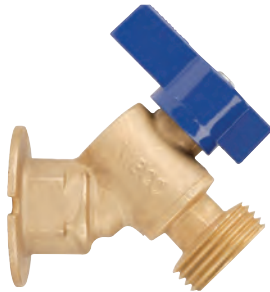
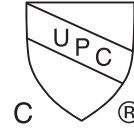
NOT FOR USE WITH POTABLE DRINKING WATER APPLICATIONS AFTER JANUARY 3, 2014.

# QTX Series Quarter-Turn Low Pressure Sillcocks

- IAPMO Listed to cUPC®

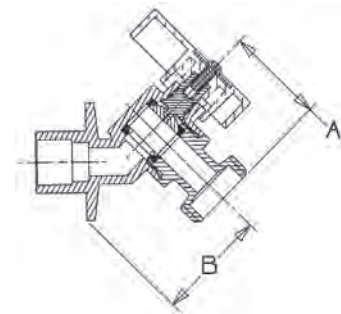
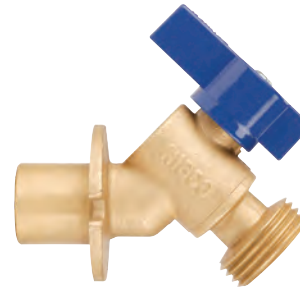
## MATERIAL LIST

| PART     | SPECIFICATION               |
|----------|-----------------------------|
| Screw    | Steel                       |
| I.D. Tag | Aluminum                    |
| Handle   | Zinc                        |
| Stem     | Brass ASTM B 16 UNS C36000  |
| O-Ring   | Nitrile                     |
| Seat     | PTFE                        |
| Ball     | Brass ASTM B 16 UNS C36000  |
| Adapter  | Brass ASTM B 283 UNS C37700 |
| Body     | Brass ASTM B 283 UNS C37700 |



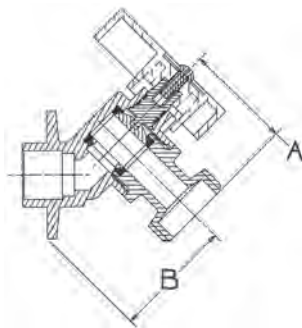
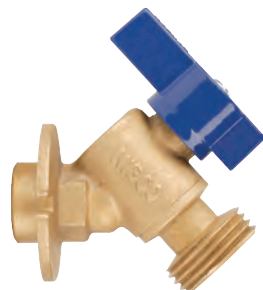
**QT63X**

| DESCRIPTION                               | Nom. Size | DIMENSIONS |       | APPROX. NET WT. |
|---|-----------|------------|-------|-----------------|
|   |           | A          | B     |                 |
| <b>ANGLE SILLCOCK</b><br>Threaded to Hose | 1/2       | 1.38"      | 1.77" | .44 lb          |
|   | 3/4       | 1.38"      | 1.85" | .48 lb          |



**QT763IX**

| DESCRIPTION  | Nom. Size  | DIMENSIONS |       | APPROX. NET WT. |
|--|------------|------------|-------|-----------------|
|  |            | A          | B     |                 |
| <b>ANGLE SILLCOCK</b><br>1/2 Cup or 3/4 Ftg. to Hose | 1/2 or 3/4 | 1.38"      | 1.57" | .50 lb          |



**QT763X**

| DESCRIPTION                             | Nom. Size | DIMENSIONS |       | APPROX. NET WT. |
|---|-----------|------------|-------|-----------------|
|   |           | A          | B     |                 |
| <b>ANGLE SILLCOCK</b><br>Solder to Hose | 1/2       | 1.38"      | 1.54" | .43 lb          |
|   | 3/4       | 1.38"      | 1.69" | .48 lb          |

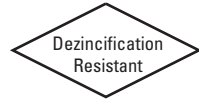
**WARNING:** This product can expose you to chemicals including lead, which is known to the State of California to cause cancer and birth defects or other reproductive harm. For more information go to [www.P65Warnings.ca.gov](http://www.P65Warnings.ca.gov).

**NOT FOR USE WITH POTABLE DRINKING WATER APPLICATIONS AFTER JANUARY 3, 2014.**

# 200 PSI CWP Bronze Gate Valves

Bronze Body • Screw-in Bonnet • Non-Rising Stem • Solid Wedge • Compact Design • Full Port

**200 PSI/14 Bar Non-Shock Cold Working Pressure**



## MATERIAL LIST

| PART               | SPECIFICATION                      |
|--------------------|------------------------------------|
| 1. Handwheel Screw | Stainless Steel, Type 430          |
| 2. Handwheel       | Aluminum                           |
| 3. Stem            | Bronze ASTM B 99 Alloy C65100 H04  |
| 4. Stem O-Ring     | EPDM                               |
| 5. Bonnet          | Cast Brass ASTM B 584 Alloy C84400 |
| 6. Wedge           | Cast Brass ASTM B 584 Alloy C84400 |
| 7. Body            | Cast Brass ASTM B 584 Alloy C84400 |



**T-29**

Threaded

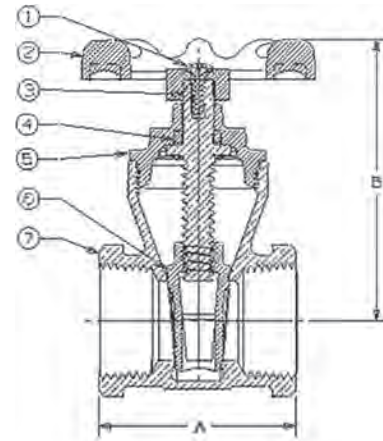


**S-29**

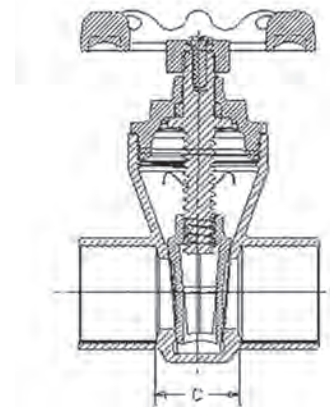
Solder

## DIMENSIONS — WEIGHTS

| Size  |     | A    |     | B    |     | C    |     | Wt. Lbs. |      |
|-------|-----|------|-----|------|-----|------|-----|----------|------|
| In.   | mm. | In.  | mm. | In.  | mm. | In.  | mm. | T-29     | S-29 |
| 1/2   | 15  | 1.89 | 48  | 2.28 | 58  | 0.85 | 22  | 0.48     | 0.42 |
| 3/4   | 20  | 2.04 | 52  | 2.75 | 70  | 0.88 | 22  | 0.75     | 0.65 |
| 1     | 25  | 2.31 | 59  | 3.23 | 82  | 0.97 | 25  | 1.22     | 1.11 |
| 1 1/4 | 32  | 2.62 | 67  | 3.61 | 92  | 1.06 | 27  | 1.62     | 1.38 |
| 1 1/2 | 40  | 2.81 | 71  | 4.14 | 105 | 1.20 | 30  | 2.12     | 1.98 |
| 2     | 50  | 2.86 | 73  | 4.97 | 126 | 1.32 | 34  | 3.29     | 3.23 |



**T-29**  
NPT x NPT



**S-29**  
Cup x Cup



**WARNING:** This product can expose you to chemicals including lead, which is known to the State of California to cause cancer and birth defects or other reproductive harm. For more information go to [www.P65Warnings.ca.gov](http://www.P65Warnings.ca.gov).

**NOT FOR USE WITH POTABLE DRINKING WATER APPLICATIONS AFTER JANUARY 3, 2014.**

# Brass Gate Valve

Brass Body • Non-Rising Stem • Full Port

200 PSI/14 Bar Non-Shock Cold Working Pressure

## MATERIAL LIST

| PART           | SPECIFICATION                                      |
|----------------|--|
| 1. Nut         | Steel plated ASTM A 108 Alloy G10100               |
| 2. Name Plate  | Aluminum ASTM B 209 Alloy 1100                     |
| 3. Handwheel   | Cast Iron ASTM A 48 Class No. 35                   |
| 4. Stem        | Brass ASTM B 16 Alloy C36000                       |
| 5. Packing Nut | Brass ASTM B 16 Alloy C36000 or B 584 Alloy C85700 |
| *6. Gland      | Brass ASTM B 16 Alloy C36000                       |
| 7. Packing     | Graphite/Rubber Non-Asbestos                       |
| 8. Bonnet      | Brass ASTM B 584 Alloy C85700                      |
| 9. Lock Nut    | Brass ASTM B 16 Alloy C 36000                      |
| 10. Wedge      | Brass ASTM B 584 Alloy C85700                      |
| 11. Body       | Brass ASTM B 584 Alloy C85700                      |

\* Packing gland only for valves 1½" and larger.

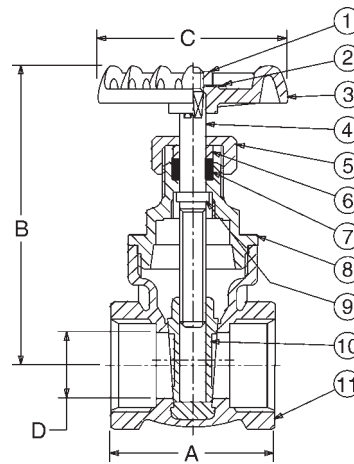
† Available with Drain in sizes ½" and ¾" for TI-8. Specify TI-8D on order.



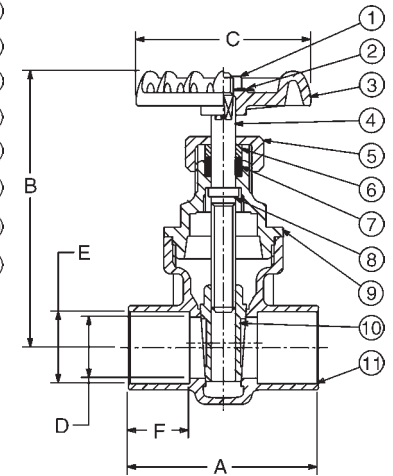
**TI-8**  
Threaded



**SI-8**  
Solder



**TI-8**  
NPT x NPT



**SI-8**  
Cup x Cup

## DIMENSIONS—WEIGHTS

| Size | Dimensions |      |      |      |      |       |      |      |      |      |      |      |      |      |      |      |      |      | WEIGHT |      |      |       |      |      |      |
|------|------------|------|------|------|------|-------|------|------|------|------|------|------|------|------|------|------|------|------|--------|------|------|-------|------|------|------|
|      | TI-8       |      | SI-8 |      | TI-8 |       | SI-8 |      | TI-8 |      | SI-8 |      | TI-8 |      | SI-8 |      | SI-8 |      | TI-8   |      | SI-8 |       |      |      |      |
|      | A          | A    | B    | B    | C    | C     | D    | D    | E    | F    |      |      |      |      |      |      |      |      |        |      |      |       |      |      |      |
| in.  | mm.        | in.  | mm.  | in.  | mm.  | in.   | mm.  | in.  | mm.  | in.  | mm.  | in.  | mm.  | in.  | mm.  | in.  | mm.  | in.  | mm.    | Lbs. | Kg.  | Lbs.  | Kg.  |      |      |
| ¼    | 8          | 1.61 | 41   | —    | —    | 2.76  | 70   | —    | —    | 2.13 | 54   | —    | —    | 0.39 | 10   | —    | —    | —    | —      | —    | —    | 0.55  | 0.25 | —    | —    |
| ⅜    | 10         | 1.61 | 41   | —    | —    | 2.76  | 70   | —    | —    | 2.13 | 54   | —    | —    | 0.39 | 10   | —    | —    | —    | —      | —    | —    | 0.55  | 0.25 | —    | —    |
| ½    | 15         | 1.69 | 43   | 1.77 | 45   | 2.83  | 72   | 2.83 | 72   | 2.13 | 54   | 2.13 | 54   | 0.50 | 12   | 0.50 | 13   | .63  | 16     | 0.50 | 13   | 0.59  | 0.27 | 0.59 | 0.27 |
| ¾    | 20         | 1.85 | 47   | 2.32 | 59   | 3.31  | 84   | 3.31 | 84   | 2.13 | 54   | 2.13 | 54   | 0.75 | 19   | 0.75 | 19   | .88  | 22     | 0.75 | 19   | 0.77  | 0.35 | 0.77 | .035 |
| 1    | 25         | 2.13 | 54   | 2.76 | 70   | 3.86  | 98   | 3.86 | 98   | 2.40 | 61   | 2.40 | 61   | 0.94 | 24   | 0.94 | 24   | 1.13 | 29     | 0.91 | 23   | 1.06  | 0.48 | 1.06 | 0.48 |
| 1¼   | 32         | 2.40 | 61   | 2.87 | 73   | 4.57  | 116  | 4.57 | 116  | 3.03 | 77   | 3.03 | 77   | 1.25 | 32   | 1.25 | 32   | 1.38 | 35     | 0.97 | 25   | 1.54  | 0.70 | 1.54 | 0.70 |
| 1½   | 40         | 2.56 | 65   | 3.19 | 81   | 4.92  | 125  | 4.92 | 125  | 3.03 | 77   | 3.03 | 77   | 1.48 | 38   | 1.48 | 38   | 1.63 | 41     | 1.09 | 28   | 2.11  | 0.96 | 2.11 | 0.96 |
| 2    | 50         | 2.83 | 72   | 3.90 | 99   | 6.02  | 153  | 6.02 | 153  | 3.27 | 83   | 3.27 | 83   | 1.94 | 49   | 1.94 | 49   | 2.13 | 54     | 1.34 | 34   | 3.17  | 1.44 | 3.17 | 1.44 |
| *2½  | 65         | 3.50 | 89   | 4.61 | 117  | 7.32  | 186  | 7.32 | 186  | 4.13 | 105  | 4.13 | 105  | 2.48 | 63   | 2.48 | 63   | 2.63 | 67     | 1.47 | 37   | 3.79  | 2.63 | 5.79 | 2.63 |
| *3   | 80         | 3.98 | 101  | 5.20 | 132  | 8.70  | 221  | 8.70 | 221  | 4.41 | 112  | 4.41 | 112  | 2.95 | 75   | 2.95 | 75   | 3.13 | 80     | 1.66 | 42   | 8.10  | 3.68 | 8.10 | 3.68 |
| *4   | 100        | 4.57 | 116  | —    | —    | 10.16 | 258  | —    | —    | 6.67 | 172  | —    | —    | 3.62 | 92   | —    | —    | —    | —      | —    | —    | 20.94 | 9.52 | —    | —    |

\*Conventional Port only

**WARNING:** This product can expose you to chemicals including lead, which is known to the State of California to cause cancer and birth defects or other reproductive harm. For more information go to [www.P65Warnings.ca.gov](http://www.P65Warnings.ca.gov).

NOT FOR USE WITH POTABLE DRINKING WATER APPLICATIONS AFTER JANUARY 3, 2014.

# Bronze Ring Check® Valve

Inline Lift Type • Resilient Discs • Spring Actuated



**125 PSI/9 Bar Saturated Steam (PTFE Disc only)**  
**200 PSI/14 Bar Non-Shock Cold Working Pressure**

## MATERIAL LIST

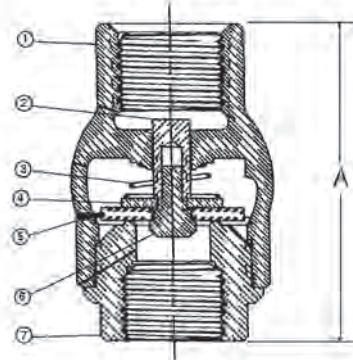
| PART           | SPECIFICATION                           |
|----------------|---|
| 1. Body        | Bronze ASTM B 584 Alloy C84400          |
| 2. Stem        | Stainless Steel ASTM A 582 Alloy C30300 |
| 3. Spring      | 316 Stainless Steel                     |
| 4. Disc Holder | Stainless Steel Type 301                |
| 5. Disc        | Buna-N                                  |
| 6. Seat Screw  | Stainless Steel ASTM A 276 Alloy S43000 |
| 7. Body End    | Bronze ASTM B 584 Alloy C84400          |



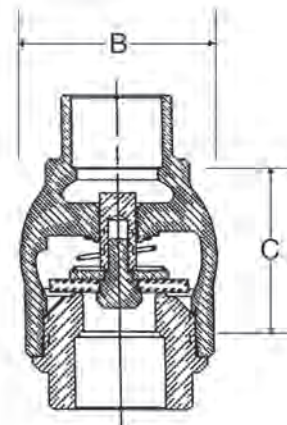
**T-480**  
Threaded



**S-480**  
Solder



**T-480**  
NPT x NPT



**S-480**  
Cup x Cup

## DIMENSIONS—WEIGHTS

| Size  | Dimensions |      |    |      |    |      | T-480 |      | S-480 |      |      |
|-------|------------|------|----|------|----|------|-------|------|-------|------|------|
|       | A          |      | B  |      | C  |      | In.   | mm.  | Lbs.  | Kg.  |      |
| 3/8   | 10         | 2.00 | 51 | 1.38 | 35 | 1.44 | 37    | 0.41 | 10    | 0.44 | 0.20 |
| 1/2   | 15         | 2.06 | 52 | 1.38 | 35 | 1.19 | 30    | 0.36 | 9     | 0.40 | 0.18 |
| 3/4   | 20         | 2.25 | 57 | 1.63 | 41 | 1.31 | 33    | 0.48 | 12    | 0.52 | 0.24 |
| 1     | 25         | 2.63 | 67 | 2.00 | 51 | 1.50 | 38    | 0.77 | 29    | 0.85 | 0.39 |
| 1 1/4 | 32         | 2.94 | 75 | 2.38 | 60 | 1.69 | 43    | 1.14 | 25    | 1.28 | 0.58 |
| 1 1/2 | 40         | 3.31 | 84 | 2.75 | 70 | 2.00 | 51    | 1.63 | 41    | 1.75 | 0.79 |
| 2     | 50         | 3.69 | 94 | 3.38 | 86 | 2.31 | 59    | 2.27 | 58    | 2.70 | 1.23 |

Ordering: The T-480 and S-480 both have standard Buna-N Discs.  
Also available with PTFE (Y) Discs; specify T-480-Y or S-480-Y.  
Note: 3/8" thru 2" require 1/2 pound pressure to open.

**WARNING:** This product can expose you to chemicals including lead, which is known to the State of California to cause cancer and birth defects or other reproductive harm. For more information go to [www.P65Warnings.ca.gov](http://www.P65Warnings.ca.gov).

**NOT FOR USE WITH POTABLE DRINKING WATER APPLICATIONS AFTER JANUARY 3, 2014.**

# Brass Check Valves

Brass Body • Swing Type Check

**200 PSI/14 Bar Non-Shock Cold Working Pressure**

## MATERIAL LIST

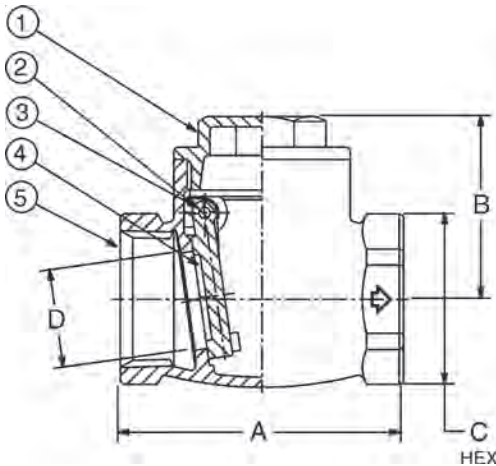
| PART      | SPECIFICATION                                 |
|-----------|---|
| 1. Bonnet | Bronze ASTM B 584 Alloy C85700                |
| 2. Plug   | Bronze ASTM B 16 Alloy C36000                 |
| 3. Pin    | Brass ASTM B 16 Alloy C37700                  |
| 4. Disc   | Brass ASTM B 124 Alloy C37700                 |
| 5. Body   | Brass ASTM B 584 Alloy C85700 or Alloy C83600 |



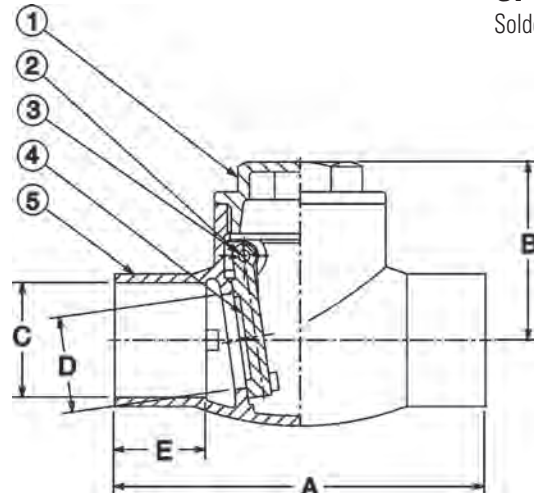
**TI-3**  
Threaded



**SI-3**  
Solder



**TI-3**  
NPT to NPT



**SI-3**  
Cup x Cup

## DIMENSIONS—WEIGHTS

| Size  | Dimensions |      |      |      |      |      |      |      |      |      |      |      |      |      |      |      |      |      | WEIGHT |       |      |      |      |     |      |
|-------|------------|------|------|------|------|------|------|------|------|------|------|------|------|------|------|------|------|------|--------|-------|------|------|------|-----|------|
|       | TI-3       |      | SI-3 |      | TI-3 |      | SI-3 |      | TI-3 |      | SI-3 |      | TI-3 |      | SI-3 |      | SI-3 |      | TI-3   |       | SI-3 |      |      |     |      |
|       | A          | A    | B    | B    | C    | C    | D    | D    | E    | A    | A    | B    | B    | C    | C    | D    | D    | E    | A      | A     | B    | B    | Lbs. | Kg. | Lbs. |
| 1/2   | 15         | 2.05 | 52   | 2.13 | 54   | 1.50 | 38   | 1.50 | 38   | 1.00 | 25   | 0.63 | 16   | 0.52 | 13   | 0.52 | 13   | 0.50 | 13     | 0.46  | 0.21 | 0.46 | 0.21 |     |      |
| 3/4   | 20         | 2.32 | 59   | 2.99 | 76   | 1.57 | 40   | 1.57 | 40   | 1.22 | 31   | 0.88 | 22   | 0.70 | 18   | 0.70 | 18   | 0.75 | 19     | 0.66  | 0.30 | 0.66 | 0.30 |     |      |
| 1     | 25         | 2.72 | 69   | 3.66 | 93   | 1.77 | 45   | 1.77 | 45   | 1.50 | 38   | 1.13 | 29   | 0.94 | 24   | 0.94 | 24   | 0.91 | 23     | 0.92  | 0.42 | 0.92 | 0.42 |     |      |
| 1 1/4 | 32         | 3.11 | 79   | 4.09 | 104  | 2.01 | 51   | 2.01 | 51   | 1.85 | 47   | 1.38 | 35   | 1.24 | 32   | 1.24 | 32   | 0.97 | 25     | 1.60  | 0.73 | 1.60 | 0.73 |     |      |
| 1 1/2 | 40         | 3.50 | 89   | 4.57 | 116  | 2.17 | 55   | 2.17 | 55   | 2.11 | 54   | 1.63 | 41   | 1.42 | 36   | 1.42 | 36   | 1.09 | 28     | 1.79  | 0.81 | 1.79 | 0.81 |     |      |
| 2     | 50         | 4.29 | 109  | 5.51 | 140  | 2.64 | 67   | 2.64 | 67   | 2.60 | 66   | 2.13 | 54   | 1.81 | 46   | 1.81 | 46   | 1.34 | 34     | 2.87  | 1.30 | 2.87 | 1.30 |     |      |
| 2 1/2 | 65         | 5.31 | 135  | —    | —    | 3.31 | 84   | —    | —    | 3.23 | 82   | —    | —    | 2.26 | 57   | —    | —    | —    | —      | 5.29  | 2.40 | —    | —    |     |      |
| 3     | 80         | 6.30 | 160  | —    | —    | 3.78 | 96   | —    | —    | 3.78 | 96   | —    | —    | 2.70 | 69   | —    | —    | —    | —      | 8.82  | 4.01 | —    | —    |     |      |
| 4     | 100        | 7.38 | 190  | —    | —    | 4.45 | 113  | —    | —    | 4.80 | 122  | —    | —    | 3.78 | 96   | —    | —    | —    | —      | 13.23 | 6.01 | —    | —    |     |      |

**WARNING:** This product can expose you to chemicals including lead, which is known to the State of California to cause cancer and birth defects or other reproductive harm. For more information go to [www.P65Warnings.ca.gov](http://www.P65Warnings.ca.gov).

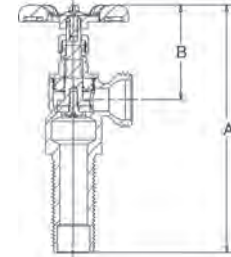
**NOT FOR USE WITH POTABLE DRINKING WATER APPLICATIONS AFTER JANUARY 3, 2014.**

# Washer Box Valves

125 lb. CWP to 100°F • Maximum Temperature 180°F

## MATERIAL LIST

| PART            | SPECIFICATION                 |
|-----------------|-------------------------------|
| 1. Handle Screw | Carbon Steel                  |
| 2. Handle       | Aluminum                      |
| 3. Packing Nut  | Brass ASTM B 16               |
| 4. Packing      | Graphite Impregnated Fibers   |
| 5. Bonnet       | Brass ASTM B 584 Alloy C84400 |
| 6. Body         | Brass ASTM B 584 Alloy C84400 |
| 7. Stem         | Copper Alloy C10200           |
| 8. Seat         | Buna-N                        |
| 9. Seat Screw   | Stainless Steel, Type 430     |
| 10. Wing Nut    | Polypropylene                 |



**64L 1-pc Bronze Long Shank Washer Box Valve**

| DESCRIPTION             | Size | DIMENSIONS |       | APPROX. NET WT. |
|-------------------------|------|------------|-------|-----------------|
|                         |      | A          | B     |                 |
| Cup or NPSL/NPT to Hose | 1/2  | 5.0"       | 1.82" | .54 lb          |

**WARNING:** This product can expose you to chemicals including lead, which is known to the State of California to cause cancer and birth defects or other reproductive harm. For more information go to [www.P65Warnings.ca.gov](http://www.P65Warnings.ca.gov).

**NOT FOR USE WITH POTABLE DRINKING WATER APPLICATIONS AFTER JANUARY 3, 2014.**

# PVC Ball Valves

One-Piece Molded PVC Body • Threaded or Socket Ends  
Schedule 80

**150 PSI/10.3 Bar Non-Shock Cold Working Pressure to 73° F/23° C**

**NSF Listed to NSF/ANSI 14 ½"- 2" Sizes**

**NSF/ANSI/CAN 61 All Sizes**

**NSF/ANSI/CAN 372 All Sizes**

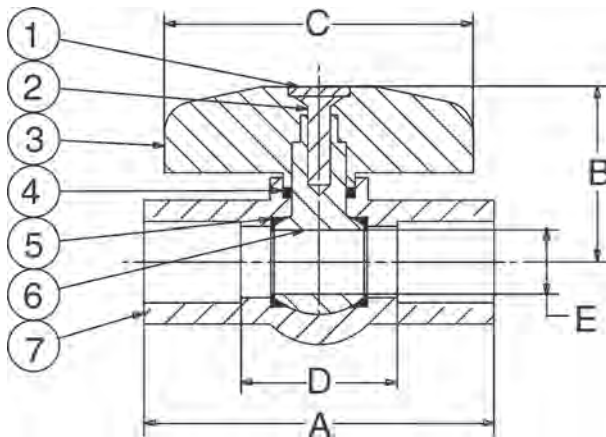


**4660-S**  
Socket Weld

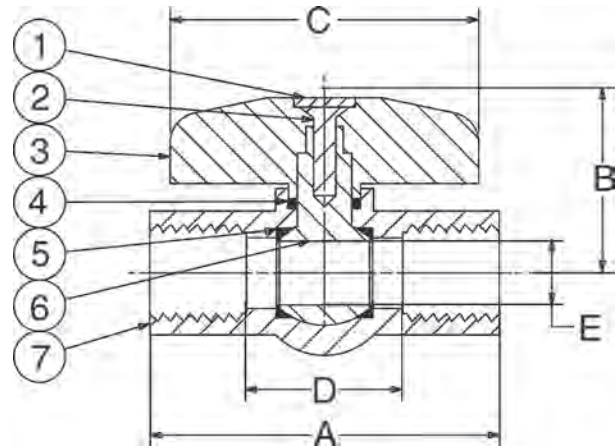
**4660-T**  
Threaded  
(not shown)

## MATERIAL LIST

| PART             | SPECIFICATION                         |
|------------------|---------------------------------------|
| 1. Handle Cap    | ABS                                   |
| 2. Screw         | Zinc Plated Steel                     |
| 3. Handle        | ABS                                   |
| 4. O-Ring        | EPDM                                  |
| 5. Seat Seal (2) | EPDM                                  |
| 6. Ball          | PVC ½"- 2" Sizes<br>PP 2 ½"- 4" Sizes |
| 7. Body          | PVC                                   |



**4660-S**  
Socket x Socket



**4660-T**  
Threaded x Threaded

## DIMENSIONS—WEIGHTS

| Size | Dimensions |       |     |      |     |       |     |      |     |      | Weight |      | Master Ctn. Qty |     |
|------|------------|-------|-----|------|-----|-------|-----|------|-----|------|--------|------|-----------------|-----|
|      | A          |       | B   |      | C   |       | D   |      | E   |      | Lbs.   | Kg.  |                 |     |
| In.  | mm.        | In.   | mm. | In.  | mm. | In.   | mm. | In.  | mm. | In.  | mm.    |      |                 |     |
| ½    | 15         | 3.27  | 83  | 1.77 | 45  | 2.76  | 70  | 1.52 | 39  | 0.55 | 14     | 0.18 | 0.08            | 100 |
| ¾    | 20         | 3.74  | 95  | 2.13 | 54  | 3.46  | 88  | 1.74 | 44  | 0.79 | 20     | 0.31 | 0.14            | 100 |
| 1    | 25         | 4.17  | 106 | 2.56 | 65  | 3.94  | 100 | 1.92 | 49  | 0.98 | 25     | 0.49 | 0.22            | 100 |
| 1¼   | 32         | 4.49  | 114 | 2.64 | 67  | 3.94  | 100 | 1.99 | 51  | 1.18 | 30     | 0.57 | 0.26            | 100 |
| 1½   | 40         | 5.12  | 130 | 2.99 | 76  | 4.29  | 109 | 2.37 | 60  | 1.42 | 36     | 0.88 | 0.40            | 48  |
| 2    | 50         | 5.79  | 147 | 3.50 | 89  | 5.28  | 134 | 2.79 | 71  | 1.83 | 46.5   | 1.50 | 0.68            | 48  |
| 2½   | 65         | 8.03  | 204 | 4.13 | 105 | 7.01  | 178 | 4.53 | 115 | 2.28 | 58     | 2.73 | 1.24            | 12  |
| 3    | 80         | 9.02  | 229 | 4.88 | 124 | 8.82  | 224 | 5.27 | 134 | 3.03 | 77     | 4.01 | 1.82            | 12  |
| 4    | 100        | 11.81 | 300 | 5.83 | 148 | 10.87 | 276 | 7.31 | 186 | 3.86 | 98     | 8.29 | 3.77            | 6   |

Note: Socket ends per ASTM D 2467  
Thread ends per ASME B1.20.1

**WARNING:** This product can expose you to chemicals including styrene, which is known to the State of California to cause cancer. For more information go to [www.P65Warnings.ca.gov](http://www.P65Warnings.ca.gov).

**\* DO NOT USE OR TEST THE PLASTIC VALVES LISTED IN THIS CATALOG WITH COMPRESSED AIR OR OTHER GASSES.**

# CPVC-CTS Ball Valve

One-Piece Molded CPVC Body • Socket Ends

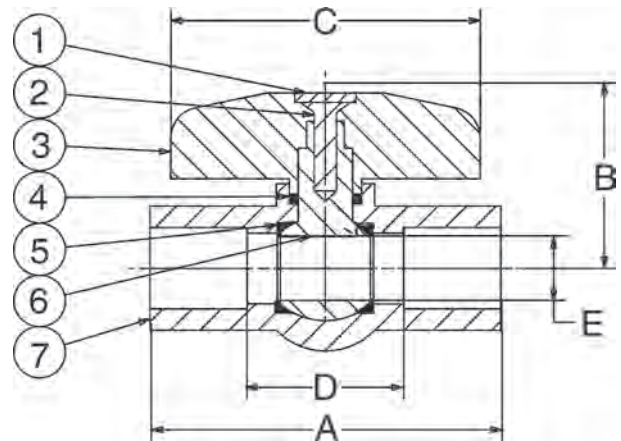
**150 PSI/10.3 Bar Non-Shock Cold Working Pressure to 73° F/23° C**  
**NSF Listed to NSF/ANSI/CAN 61**  
**NSF/ANSI/CAN 372**



**4770**  
Socket Weld

## MATERIAL LIST

| PART          | SPECIFICATION     |
|---------------|-------------------|
| 1. Handle Cap | ABS               |
| 2. Screw      | Zinc Plated Steel |
| 3. Handle     | ABS               |
| 4. O-Ring     | EPDM              |
| 5. Seat (2)   | PTFE              |
| 6. Ball       | CPVC              |
| 7. Body       | CPVC              |



**4770**  
Socket x Socket

## DIMENSIONS—WEIGHTS

| Size | Dimensions |      |     |      |     |      |     |      |     |      | Weight |      | Master Ctn. Qty |     |
|------|------------|------|-----|------|-----|------|-----|------|-----|------|--------|------|-----------------|-----|
|      | A          |      | B   |      | C   |      | D   |      | E   |      | Lbs.   | Kg.  |                 |     |
| In.  | mm.        | In.  | mm. | In.  | mm. | In.  | mm. | In.  | mm. | In.  | mm.    |      |                 |     |
| ½    | 15         | 2.68 | 68  | 1.42 | 36  | 2.36 | 60  | 1.68 | 43  | 0.47 | 12     | 0.19 | 0.09            | 100 |
| ¾    | 20         | 3.27 | 83  | 1.77 | 45  | 2.76 | 70  | 1.87 | 47  | 0.71 | 18     | 0.35 | 0.16            | 100 |
| 1    | 25         | 3.74 | 95  | 2.13 | 54  | 3.46 | 88  | 1.94 | 49  | 0.94 | 24     | 0.54 | 0.25            | 100 |
| 1¼   | 32         | 4.17 | 106 | 2.56 | 65  | 3.94 | 100 | 1.97 | 50  | 0.98 | 25     | 0.70 | 0.32            | 100 |
| 1½   | 40         | 4.49 | 114 | 2.64 | 67  | 3.94 | 100 | 1.89 | 48  | 1.18 | 30     | 1.06 | 0.48            | 48  |
| 2    | 50         | 5.71 | 145 | 2.99 | 76  | 4.29 | 109 | 2.29 | 58  | 1.42 | 36     | 1.73 | 0.79            | 48  |

Note: Socket ends per ASTM D 2846.

**WARNING:** This product can expose you to chemicals including styrene, which is known to the State of California to cause cancer. For more information go to [www.P65Warnings.ca.gov](http://www.P65Warnings.ca.gov).

**\* DO NOT USE OR TEST THE PLASTIC VALVES LISTED IN THIS CATALOG WITH COMPRESSED AIR OR OTHER GASSES.**

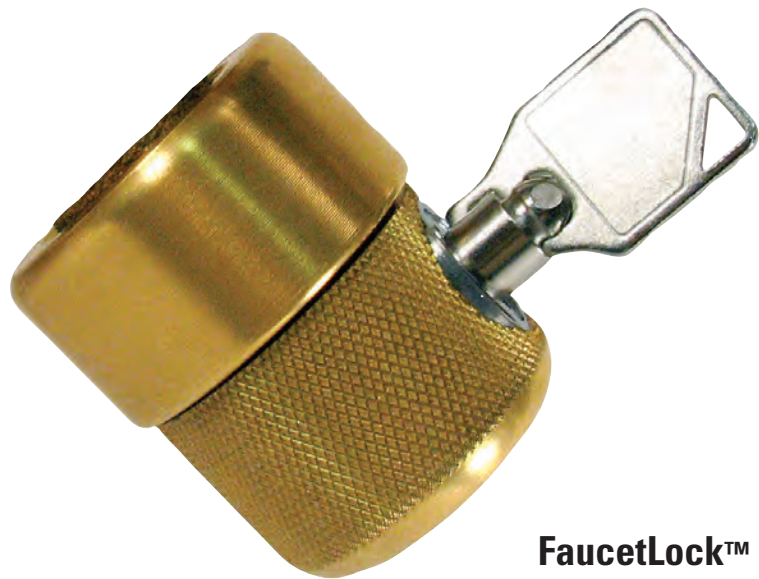
# FAUCETLOCK™

## Protect Your Water Supply

Perfect for use in your:

- Front & Backyard,
- Vacation Home, Condo,
- Apartment House,
- Dock, Campsite,
- Storefront, School,
- Trailer Park,
- Parking Lot,
- Gas Station...

**Save Water ... Save Money**



### FaucetLock™

Fits standard 3/4" hose thread

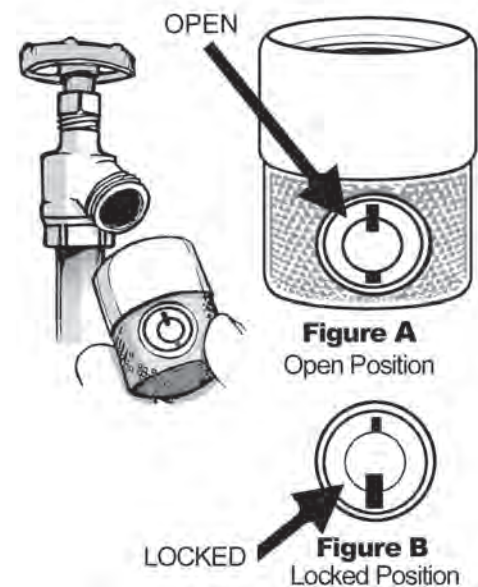


**Extra Key Included**  
**No Tools Required**  
**Twist On & Lock**  
PATENT PENDING











### Installation Instructions

1. Inspect FaucetLock's threads for dirt and debris, and clean if necessary.
2. View lock, make sure key notches are in aligned (OPEN) position. (See Figure A)
3. Hold lock by its textured ring and screw onto hose bibb in a clockwise direction until tight.
4. Insert key and turn clockwise half a turn then remove key. FaucetLock is now in its secured and locked position. (See Figure B) (FaucetLock is secured on hose bibb if the textured ring spins freely)
5. To remove FaucetLock, insert key and rotate half a turn counterclockwise. Remove key. Hold textured ring and turn counterclockwise until FaucetLock screws off the hose bibb.
6. While FaucetLock is detached from hose bibb, be careful not to allow dirt or debris to get into lock or threads.

*Freezing weather precaution: If installed on a frostproof sillcock, make sure valve has had time to drain after closing and before installation of FaucetLock™.*



# Low Pressure Valve Handwheel Options & Accessories

|   |   |
|---|---|
| <p><b>Standard No Kink and Hose Bibbs Tee Handle</b></p> <p>Sizes 1/2" - 3/4".<br/>Available as standard for all NIBCO valves with spline drive. Blue or silver color</p>   |    |
| <p><b>Cross Handles for the Classic Pro and T or S29 Valves</b></p> <p>Available for Classic Pro or T/S 29 Valves 1/2" thru 2".<br/>Used where standard handwheel would be out of reach or hand space is restricted.<br/>For field replacement, specify valve type and size. Spline drive only.</p> |    |
| <p><b>Iron Handwheel for Brass Gate Valves</b></p> <p>Available for NIBCO 1/4" thru 4".<br/>For field replacement, specify valve type and size. Square Stem Only.</p>   |    |
| <p><b>Lock Shield Bonnet Assembly Lockshield</b></p> <p>Available for NIBCO Classic Pro and Husky Valves 1/2"-3/4", except straight hose bibbs.<br/>Use where valve might be subject to unauthorized use or tampering.</p>  |    |
| <p><b>Lockshield Handwheel</b></p> <p>Available for NIBCO Classic Pro and Husky Valves, except straight bibbs.<br/>Used as handle for lockshields. Specify – "Lockshield Handle."<br/>For field replacement, specify valve type and size. Spline drive only.</p>                                    |   |
| <p><b>Classic Pro Handwheel (2 1/8" Round)</b></p> <p>Available for NIBCO Classic Pro valves 1/2"-3/4".<br/>Fits spline stem only. Available in blue or red.</p>  |  |
| <p><b>29 Replacement Handwheel</b></p> <p>Available for NIBCO S or T 29 Bronze Gate Valve sizes 1/2"-2".<br/>For field replacement only.</p>  |  |
| <p><b>Stem Extension</b></p> <p>Available for any 1/2" - 2" 580-A Series and 1/4" - 4" FP-600-A Series brass ball valves.<br/>Allows for 2" of insulation.</p>  |  |
| <p><b>Waste Cap with Rubber Gasket</b></p> <p>A fast and convenient means for draining sections of line between valves.<br/>Fits NIBCO Low Pressure Valves sizes 1/4" - 3/4".</p>   |  |
| <p><b>C750 Vacuum Breaker</b></p> <p>Fits 3/4" hose thread ends — hose bibbs, sillcocks, boiler drains.<br/>Break off screw for permanent installation.</p>   |  |

NIBCO INC. reserves the right to change materials, options and accessories without notice.

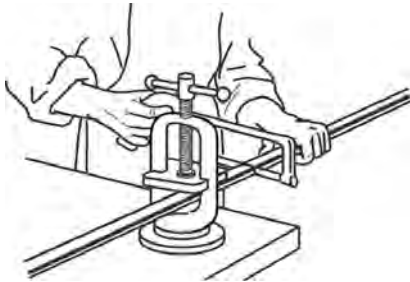
# Installation Instructions for Metal Connections

Analyze the application to determine which valve is best suited for installation, keeping in mind the service for which the valve is recommended. Before installing the correct valve, review the following installation instructions to prevent damage to the valve and assure its maximum efficiency.

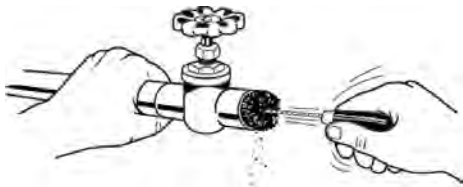
For Plastic Installation Instructions, contact Technical Services at 1.888.446.4226.

## SOLDERING

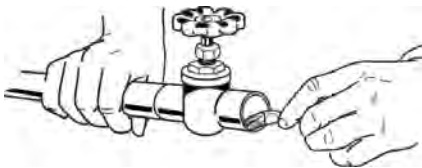
1. Cut tube end square. Ream, burr and size.



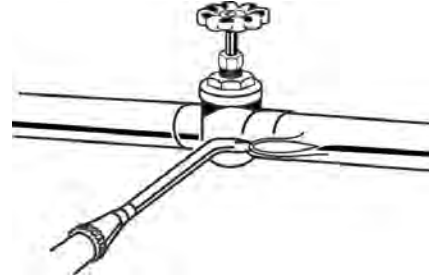
2. Use sand cloth or steel wire brush to clean both tube and cup to a bright metal. Steel wool is **not** recommended.



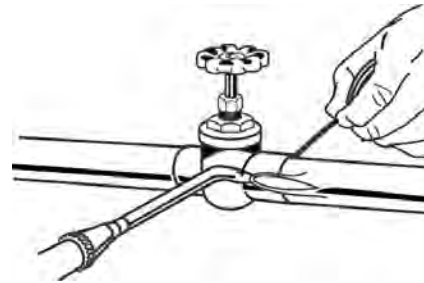
3. Apply flux to outside of tube and inside of solder cup. Surfaces to be joined must be completely covered. Use flux sparingly.



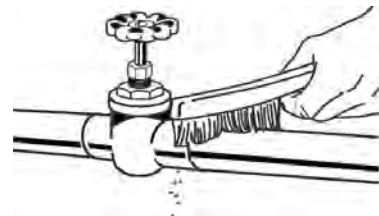
4. **Be sure that valve is fully open.** This applies only to globe and gate valves. Apply heat to tube first. Transfer as much heat as possible through the tube into the valve. Avoid prolonged heating of the valve itself. **For ball valves,** consult the installation instruction sheet or contact NIBCO Technical Services for assistance.



5. Use just enough solder: with wire solder, use 1" for 3/4" valve, etc. If too much solder is use, it may flow past tube and clog seating area. **The correct amount of solder is 1 1/2 times the diameter of the fitting or valve.**



6. Remove excess solder with small brush while plastic (soft), leaving a fillet around end of valve as it cools.



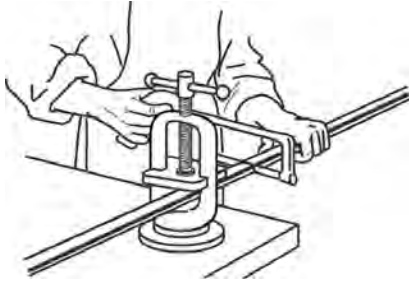
## BRAZING

The strength of a brazed joint does not vary appreciably with the different brazing materials, but depends to a large extent upon the maintenance of proper clearance between the outside of the tube and the valve socket. The interior dimensions of brazing valve sockets are machined to the closest tolerances and finished smooth to promote full capillary attraction.

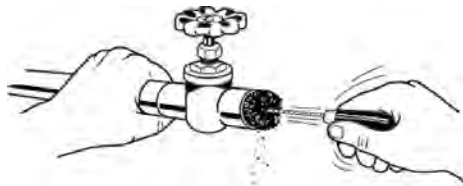
NOTE: Care should be observed in cleaning and in removing residues of the cleaning medium. Attempting to braze a contaminated or improperly cleaned surface will result in an unsatisfactory joint. Brazing alloys will not flow over or bond to oxides. Oily or greasy surfaces repel fluxes, leaving bare spots that oxidize and result in voids and inclusions.

## Installation Instructions for Metal Connections (cont.)

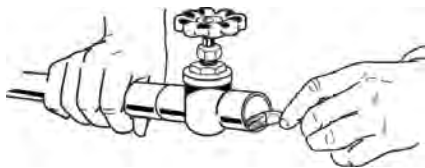
1. Cut tube end square to exact length needed, so that tube will enter valve socket all the way to the shoulder. Ream, burr and file.



2. Clean tube to a distance slightly more than what will fit into the socket, and clean valve socket. Wire brushes may be used, but avoid removing an excessive amount of metal. Fine sand cloth or emery cloth may be used with the same precautions. Steel wool is **not** recommended.



3. Apply flux to tube and socket sparingly and with a fairly thin consistency. Avoid flux on areas not cleaned, particularly inside of tube.

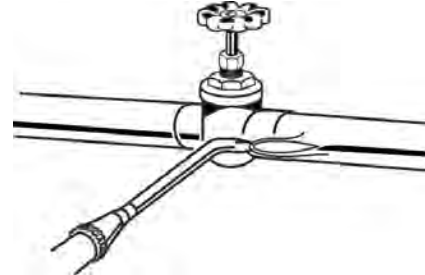


4. Assemble parts to be brazed. If fluxed parts are allowed to stand, the water in the flux will evaporate. Dried flux is liable to flake off, exposing metal surfaces to oxidation. Assemble joint by inserting tube into socket hard against the stop. The assembly should be firmly supported so that it will remain in alignment during the brazing operation. **Removal of bonnet is recommended when installing globe valves with soft seats.**

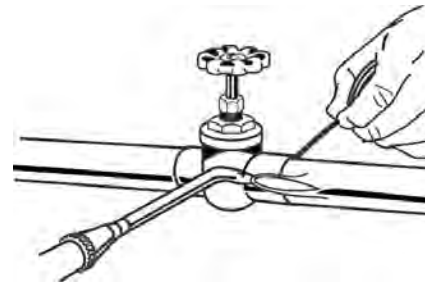
5. Apply heat to parts to be joined. The preferred method is by oxy-acetylene flame. Heat tube first, beginning one inch from edge of valve. Sweep flame around tube in short strokes up and down at right angles to run of tube. To avoid burning through tube, the flame should be in continuous motion and not allowed to remain on any one point.

Apply flame to valve at base of socket. Heat uniformly, sweeping flame from fitting to tube until flux on fitting becomes quite. Avoid excessive heating of valve.

When flux appears liquid and transparent on both tube and valve, start sweeping flame back and forth along axis of joint to maintain heat on parts to be joined, especially toward the base of the valve socket.



6. Apply brazing wire or rod at point where tube enters valve socket. Keep flame away from rod or wire as it is fed into the joint. Move flame back and forth as alloy is drawn into joint. When the proper temperature is reached, alloy will flow readily into space between tube outer wall and valve socket. When joint is filled, a continuous rim of brazing alloy will be visible.



### THREADING

Grit, dirt or any foreign matter accumulated in the pipe can hinder efficient valve operation and seriously damage vital valve parts. Thoroughly clean pipe internally with air or steam.

When threading pipe, gauge pipe threads for size and length to avoid jamming pipe against seat and disc. Thoroughly clean threaded end to remove any harmful steel or iron deposits. Apply pipe dope sparingly on pipe threads, never on valve threads. Do not allow any pipe dope into valve body in order to avoid damage to disc and seat.

Before installation, check line of flow through valve so that valve will function properly. Close valve completely before installation. Apply wrench to hex next to pipe and guard against possible distortion. After installation of valve, support the pipe line; a sagging pipe line can distort the valve and cause failure.

### COMPRESSION

For compression end connection, first slide compression nut onto copper tube, then slide on ferrule. Install the valve onto the copper tube and gently slide compression nut and ferrule up to the valve to engage. Do not use pipe dope. Tighten nut until resistance is felt. Tighten additional 1/2 turn. **DO NOT OVER TIGHTEN!**

# Installation Instructions for Frostproof Sillcock

## HOW THE FIGURE 95C WORKS

As shown on the schematic drawing on the right, the closing member (stem and disc assembly) of the Figure 95C Frostproof Sillcock operates by turning the handle in a clockwise manner to close and counter-clockwise to open.

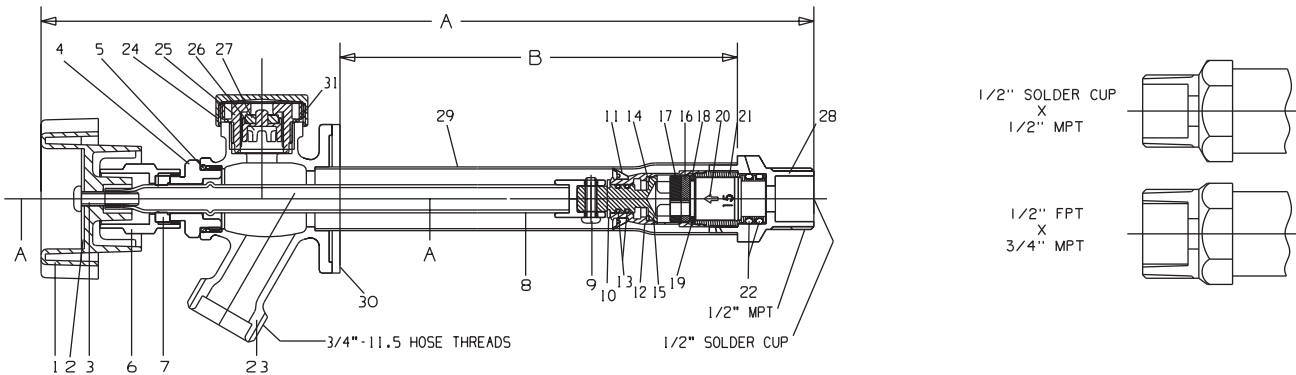
The valve's seat is at the opposite end from the handle. The valve is designed so that the seat area is situated safely behind the insulation of the home's exterior wall. This is to prevent the seat area from being exposed to freezing temperatures. Depending on the region of installation, the stem length is available in varying dimensions to accommodate the various insulation thicknesses behind the wall. The valve's "rough-in" dimension (see "A" dimension) pertains to the thickness of insulation and is measured from the frostproof sillcock's flange to the valve seat and is available in lengths 4", 6", 8", 10", 12" and 14".

The Figure 95C is designed to employ an integral back-flow prevention device to prevent potential back-siphonage. This back-siphonage, if unchecked, could compromise the safe potable water supply to the home, resulting in sickness or death.

The independent testing bodies, American Society of Sanitary Engineering and Canadian Standards Association, have validated the valve's primary and preventative functions.

## TIPS FOR LONG LIFE

1. The hose should be carefully moved about, so as not to cause abnormal tension via pulling and/or jerking.
2. If the hose is left on the Figure 95C in freezing weather, the valve's self-draining feature will protect the sillcock from freeze damage if: 1) the nozzle is not left affixed to the hose; and 2) the entire hose length is on a plane lower than the fixed position of the frostproof sillcock.
3. The key to the Figure 95C being able to withstand and operate in freezing weather is that the closing member (seat disc) is inside the heated building. If the heat is temporarily shut down for a length of time that would allow freezing to take place, all water lines should be drained.
4. The figure 95C closes at the inlet of the sillcock. You will notice that it will drip for a few seconds after being closed. Wait at least 10 seconds.



## INSTALLATION INSTRUCTIONS

1. Bore a 1 1/4" dia. hole through the wall in the desired position. A slight upward slope when drilling hole will aid sillcock in draining.
2. Insert the sillcock through the hole and position spout downward. To help position the sillcock from inside the building, "TOP" is marked on the inlet end.
3. Connect water supply line to sillcock inlet using appropriate style connection.
4. Secure sillcock flange to wall using suitable screws. For installation on lapped siding, a plastic siding plate is supplied to give a finished look.

\* **Warning: Avoid overheating when soldering — it could cause internal damage to seat area.**

# NIBCO® Specialty Valve Products Limited Warranty

## NIBCO INC. LIMITED WARRANTY

Applicable to NIBCO Specialty Valve Products Only

NIBCO INC. warrants each NIBCO specialty valve products (the "NIBCO Products") to be free from defects in materials and workmanship under normal use, service, and maintenance in accordance with the product specifications (including, but not limited to installation recommendations) for a period of two (2) years from the date of purchase.

NIBCO will repair or replace – at its option and at no charge –NIBCO Products that have been determined by NIBCO, or an authorized representative or agent thereof, to have failed solely because of a defect in materials or workmanship under normal use, service, and maintenance during the warranty period. Replacements shall be shipped free of charge to the owner. NIBCO shall further pay the installing contractor the sum of fifty (\$50.00) dollars to be applied toward the cost of installation of the replacement NIBCO Product.

This limited warranty applies to all NIBCO Products installed, tested, applied, and used in accordance with NIBCO's approved and published recommendations and instructions.

This warranty does not cover any failure or damage for or caused by:

1. any product, parts, or systems which are not manufactured or sold by NIBCO;
2. any NIBCO Product which is used for purposes other than a purpose authorized by NIBCO;
3. any NIBCO Product not installed, tested, applied, used, or maintained in accordance with NIBCO's recommended installation guidelines and instructions;
4. any NIBCO Product not installed or used in accordance with applicable codes;
5. any damage caused by, contributed in whole or in part by, or resulting from, any of the following:
  - a. abuse, misuse, mishandling, alteration, tampering, neglect, or accidental damage such as, without limitation, vandalism;
  - b. natural disasters, such as, without limitation, flooding, windstorm, and lightning;
  - c. attachments or modifications not authorized by NIBCO;
  - d. external, physical or chemical qualities, or an unsuitable or hostile environment;
  - e. any defects other than those in material or workmanship; or
  - f. any other cause beyond the control of NIBCO.

NIBCO DISCLAIMS ANY AND ALL LIABILITY FOR ANY OTHER DIRECT OR INDIRECT, INCIDENTAL, OR CONSEQUENTIAL DAMAGES OF ANY KIND, INCLUDING BUT NOT LIMITED TO, ECONOMIC LOSS, LOSS OF BUSINESS, LOST PROFITS, PUNITIVE DAMAGES, MOLD INTRUSION, WATER DAMAGE, ETC.

Some states do not allow the exclusion or limitation of damages, so the above limitation or exclusion may not apply to you.

THIS WARRANTY IS THE ONLY WARRANTY FOR THE NIBCO PRODUCTS PROVIDED BY NIBCO, AND IS AND SHALL BE IN LIEU OF ANY AND ALL OTHER WARRANTIES, EXPRESSED OR IMPLIED, INCLUDING, BUT NOT LIMITED TO, AN IMPLIED WARRANTY OF MERCHANTABILITY OR FITNESS FOR A PARTICULAR PURPOSE, AND FOR ALL OTHER OBLIGATIONS OR LIABILITIES ON THE PART OF A MANUFACTURER. NO EMPLOYEE OF NIBCO, OR ANY OTHER DISTRIBUTOR, AGENT, OR OTHER PERSON OR BUSINESS, IS AUTHORIZED TO MAKE ANY OTHER WARRANTY ON BEHALF OF NIBCO.

Some states do not allow limitations on implied warranties, so the above limitation may not apply to you.

In the event any defect occurs which is believed to be covered by this warranty, NIBCO Technical Services must immediately be contacted by calling 888.446.4226 or emailing CS-TechnicalServices@nibco.com. NIBCO Technical Services after being contacted will make further arrangements for the product's return to NIBCO. at the customer's expense for review and evaluation.

This warranty gives you specific legal rights, and you may also have other rights which vary from state to state.



## How to Order

State quantity, figure number and size for each valve or fitting you wish to order. See individual catalog pages for specific or special product designations.

### HOW MANY TO ORDER

NIBCO valves and fittings are decimal packed for your convenience in handling, shipping and stock-keeping. Number in master carton varies with item.

### POLICY ON RETURNS TO FACTORY

No NIBCO valves and fittings are to be returned without prior written agreement. Transportation must be prepaid. A 20% charge will be made to cover cost of rehandling and reinspection.

### TECHNICAL ASSISTANCE

Engineers, contractors, wholesalers or manufacturers may obtain special or technical assistance from any factory representative of NIBCO. Write, fax or phone.

NIBCO INC.  
World Headquarters  
1516 Middlebury Street  
Elkhart, IN 46516-4740  
USA

PH: 1.574.295.3000 or 1.888.446.4226

FAX: 1.574.295.3307 or 1.888.336.4226

To the best of our knowledge, the information contained in this publication is accurate. However, NIBCO does not assume any liability whatsoever for the accuracy or completeness of such information. Final determinations of the suitability of any information or product for the use to be contemplated is the sole responsibility of the user. The manner of that use, and whether there is any infringement of patents, is also the sole responsibility of the user.

# Notes

# Notes



# NIBCO®

## Global Locations

### MANUFACTURING PLANTS

#### **Metal Fittings & Valves**

Blytheville, Arkansas

McAllen, Texas

Nacogdoches, Texas

Stuarts Draft, Virginia

Worcester, Massachusetts

#### **Plastic Pipe, Valves, & Fittings**

Goshen, Indiana

Greensboro, Georgia

#### **International**

Lodz, Poland

Reynosa, Mexico



### INTERNATIONAL OFFICES

#### **World Headquarters**

Elkhart, Indiana

#### **European Office**

Lodz, Poland



VISIT OUR WEBSITE TO LEARN MORE



Press Webstone PressACR Bench  
system Chemtrol NIBCO  
SURE SEAL FLO-BOSS Press  
NIBCO wrot racer FAST PUSH FITTINGS Bench PressG  
Bench Press Webstone PressACR  
presssystem NIBCO Chem  
PressG SURE SEAL FLO-BOSS  
G NIBCO wrot racer FAST PUSH FITTINGS Bench Press  
Press Webstone PressACR Bench  
system Chemtrol NIBCO pr  
SURE SEAL FLO-BOSS Press  
NIBCO wrot racer FAST PUSH FITTINGS Bench PressG  
R Bench Press Webstone Press  
NIBCO presssystem Chemtr  
OSS PressG SURE SEAL FLO  
essACR Bench

# NIBCO®

NIBCO INC.  
WORLD HEADQUARTERS

1516 MIDDLEBURY STREET  
ELKHART, IN 46516-4740 USA  
WEB: [www.nibco.com](http://www.nibco.com)

DOMESTIC CUSTOMER SERVICE  
PHONE: 800.234.0227  
FAX: 800.234.0557

TECHNICAL SERVICE  
PHONE: 888.446.4226  
FAX: 888.336.4226

INTERNATIONAL OFFICE  
PHONE: +1/574.295.3327  
FAX: +1/574.295.3455