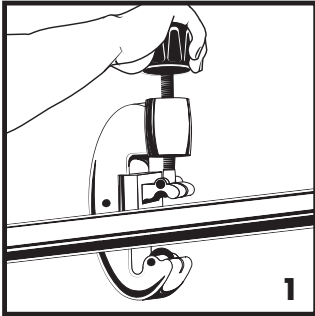


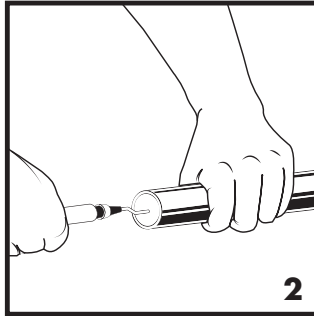
NIBCO PressG™

1/2" - 2" Fittings Installation Instructions

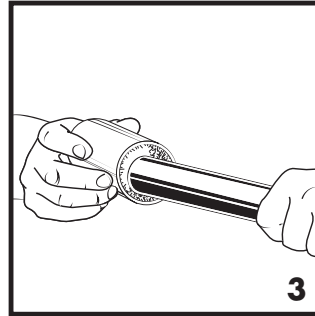
For Types K & L hard copper tubing in 1/2" to 2" sizes and annealed copper tubing in 1/2" & 3/4" sizes



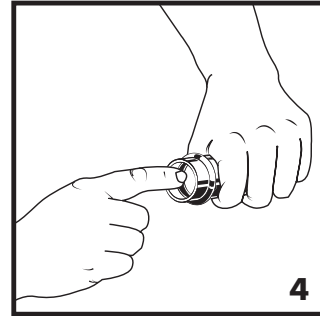
1. Select clean, undamaged copper tube and cut to desired length. Cut tube end square using a pipe cutter or fine-toothed steel saw.



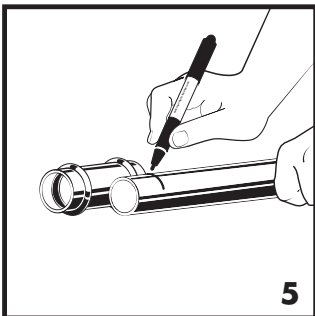
2. Deburr the tube inside diameter using a rounded file or a deburring tool.



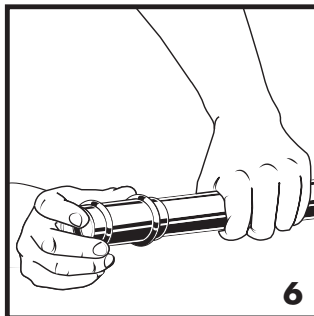
3. Deburr the tube outside diameter using a rounded file or a deburring tool. Clean the tube end of all dirt, oil and grease as well as copper dust and chips from sawing.



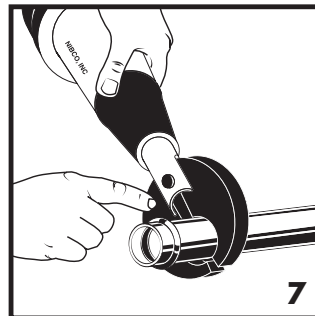
4. Check the fitting to make sure that the seal is in place, clean and free of contaminants. Only original NIBCO yellow HNBR seals are to be used. Do not use oils or lubricants.



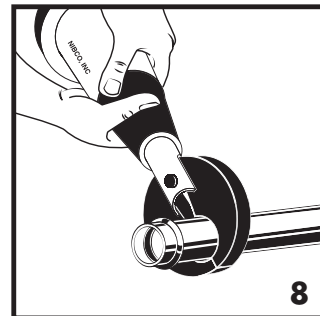
5. Mark the tube with the proper insertion depth using a permanent marker as indicated by the Insertion Depth Chart or NIBCO Insertion Depth Tool. Improper insertion depth may result in an improper seal.



6. Insert the tube into the fitting using a twisting motion to the marked depth. NOTE: End of tubing must contact stop.



7. Ensure that the proper pressing jaws are installed in the pressing tool and squeeze jaw arms to open jaw set. Place open jaws around the fitting end and ensure that the jaw is properly aligned with the contour of the fitting.



8. Make sure the tube is inserted to the proper depth in fitting and with the tool at a right angle to the tube, start pressing procedure.

Tube Insertion Depth Chart

Tube Size (In.)	Insertion Depth (In.)
1/2	11/16
3/4	7/8
1	7/8
1-1/4	1
1-1/2	1-3/8
2	1-1/2

Leak Testing: Unpressed connections are located by pressurizing the system with air. When testing with compressed air the proper maximum pressure is 15 psi. Following a successful leak test, the system may be pressure tested up to 200 psi if required by local code requirements or project specifications. Leak testing with air can be dangerous at high pressures.

The following standards, codes and instructions should be followed when installing NIBCO PressG fittings for fuel gas:

- The installation of the fuel gas system shall be in accordance with local codes, or in the absence of local codes, in accordance with the National Fuel Gas Code NFPA 54, the LP-Gas Code NFPA 58 as applicable.
- Copper tubing shall comply with one of the following standards: Type K or L ASTM B88, ASTM B280, or Type G ASTM B837. When annealed tube is used, rounding and sizing of the tube ends must be performed where needed.
- Undue stress or strain on the fittings and the tubing is to be avoided.
- Concealed tubing and fittings shall be protected from puncture threats.
- If the installation requires components in addition to those supplied by the fitting manufacturer, those components shall be specified. The instructions shall state that only the components provided or specified by the manufacturer are to be used in the installation.
- The fitting/tubing system shall not be used as a grounding electrode for an electrical system.
- The inspection, testing and purging of the installation shall be performed using procedures specified in Part 4 of the National Fuel Gas Code NFPA 54, ANSI Z223.1, the LP-Gas Code NFPA 58 section 3.2-10 as applicable or in accordance with the requirements of the applicable local codes.
- For use with natural, propane, mixed and manufactured gasses in the vapor state, not in the liquid state.
- The fitting/tubing system shall not be used as a means of support.

WARNING	MISE EN GARDE !	ADVERTENCIA
Read press tool operator's manual and fitting manufacturer's installation instructions before using. Failure to follow all instructions may result in extensive property damage and/or serious personal injury. Call the NIBCO Technical Service Department at 1.888.446.4226 if you have any questions or need assistance.	Familiarisez-vous avec le mode d'emploi de la presse et les instructions du fabricant des raccords avant d'utiliser l'appareil. Le non-respect de leurs consignes risquerait d'augmenter les risques de dégâts matériels importants et/ou de graves blessures corporelles. Veuillez adresser toutes questions éventuelles ou demandes de mode d'emploi à la NIBCO en composant le 1.888.446.4226.	Antes de usar, lea el Manual del Operario de esta herramienta de presión y las instrucciones de instalación del acoplamiento proporcionadas por su fabricante. Pueden ocurrir daños materiales de gran envergadura y lesiones corporales de gravedad si no se respetan todas las instrucciones. Si tiene alguna pregunta o desea pedir un manual, llame al Departamento de Servicio Técnico de NIBCO al 1.888.446.4226.

Visit our website for the most current information.

NIBCO[®] PressG[™] — Crimp Integrity Testing Instructions for Fittings

PRESSURE TESTING:

NIBCO recommends the following leak testing procedures when installing NIBCO PressG with the leak detection feature. These test procedures allow the installer to find un-pressed connections while the system is being tested under pressure. The uniquely designed HNBR o-ring allows fluids or gases to flow past the seal and leak when the fitting has not yet been pressed. When the fitting has been pressed, the o-ring will create a leak-tight seal around the tube.

AIR LEAK TESTING:

1. Pressurize system up to 15 psi maximum using dry, oil free compressed air, carbon dioxide, or nitrogen.
2. Allow system pressure to stabilize for a minimum of 2 hours.
3. If system pressure has dropped, add more air to bring entire system up to 15 psi maximum. If system pressure increases above 15 psi, bleed off excess pressure to ensure system is at a maximum pressure of 15 psi.
4. If the system pressure continues to drop, inspect all joints for un-pressed fittings. The NIBCO PressG with the leak detection feature are designed to leak in an un-pressed condition.
5. Check all press joints for air leaks using a commercially available leak test solution or a soap and water mixture.
6. Once the system has been confirmed to be leak free, pressure can be increased to the recommended working pressure to verify system integrity.

SYSTEM INTEGRITY TESTING*:

Once a system has been confirmed to be properly installed and no press connections have been left uncrimped, the system is recommended for testing up to the maximum non-shock working pressure of 200 psi hydrostatic.

NOTE: While NIBCO PressG products are tested to pressures as high as 600 psi, the product system rating limitation of 200 psi is in place to ensure a safety factor of three-times proof-testing according to ASME B16.51 Copper and Copper Alloy Press-Connect Pressure Fittings.

SYSTEM INTEGRITY TESTING AT HIGHER PRESSURES*:

NIBCO PressG products can be tested at hydrostatic pressures higher than 200 CWP, not exceeding a maximum pressure of 300 psi hydrostatic for a maximum test duration of 24 hours, when assembled and tested according to the methods prescribed above.

CAUTION: These testing parameters and protocols apply only to NIBCO products as detailed above: NIBCO accepts no responsibility or liability for any other manufacturer's products that may be damaged as a result of such testing.

*System integrity testing applies to leak detect and non-leak detect fittings and valves.

Visit our website for the most current information.

NIBCO® PressG™ — Frequently Asked Questions

What is the NIBCO product offering?

NIBCO PressG features a full range of copper and copper alloy fittings, commercial valves, accessories and pressing tools, jaws and chains for use with K and L copper water tube.

What is the system temperature rating?

NIBCO PressG is rated over a temperature range of -40°F to 180°F.

What are the approved system applications?

See page 4 for a complete listing of approved applications.

How does the patented leak detection system work?

The HNBR seal has tabs that allow an uncrimped connection to leak during system testing.

What was the testing protocol for NIBCO PressG fittings and valves?

NIBCO PressG fittings and valves were subjected to a wide range of performance tests including dimensional verification, thread end specification, hydrostatic burst strength, unrestrained pressure, static torque, bending, vacuum pressure, cyclic pressure, vibration, thermo-cycling and dynamic torque.

Can other available pressing tools and jaws be used on the NIBCO PressG?

See page 12 for a complete listing of approved tools and jaws.

Can NIBCO PressG connection be re-crimped?

If for any reason the press cycle is interrupted, it is possible to re-crimp a NIBCO PressG connection. However, when re-crimping the connection, the jaws must be properly aligned so that the crimp is performed in the same location as the original.

Are NIBCO PressG fittings available with solder or threaded by Press System connection?

NIBCO offers many PressG fitting combinations by soldered or threaded connection. Please note, always solder the standard wrot connection first when possible. Prior to soldering, remove the press end HNBR o-ring, solder, allow the fitting to cool, insert the HNBR O-ring, and then press the connection.

Can a fitting be soldered close to a PressG connection?

NIBCO recommends soldering at least 12 inches away from the Press System connection. If this length is not possible, either solder the joint prior to connecting the press fitting or wrap the connection with a cold wet cloth.

Is NIBCO PressG approved for underground use?

In accordance with local plumbing codes, NIBCO PressG can be installed underground.

Is NIBCO PressG compatible with standard disinfectant cleaning agents?

Yes, NIBCO PressG is typically compatible. For specific cleaning agent compatibility, contact NIBCO Technical Services at the below noted number.

Visit our website for the most current information.