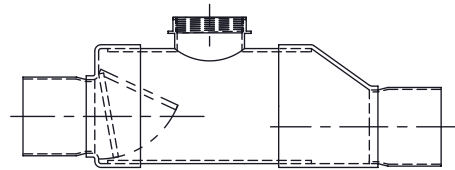
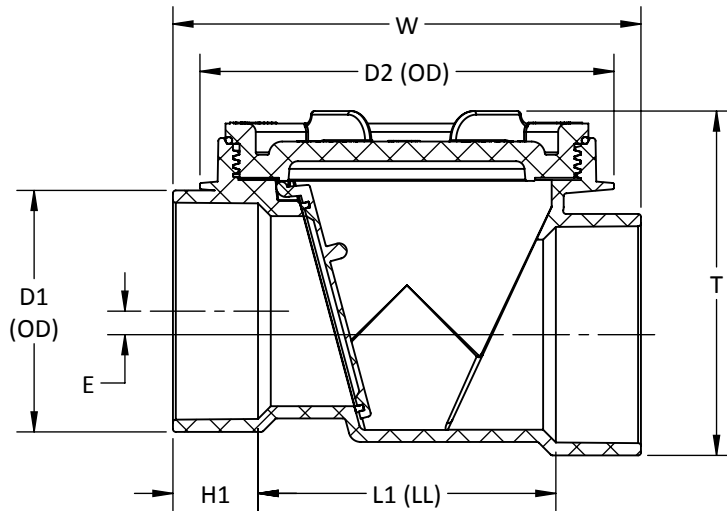


MOLDED



FABRICATED (APPEARANCE MAY VARY)



ASTM D2665, F1866 CSA B181.1, B181.2 WHERE APPLICABLE

**IN-LINE BACKWATER VALVE HxH  
PVC SOLVENT WELD DWV**

PART NO.	SIZE IN INCHES	L1	H1	E	T	W	D1	D2
* D0104	4 x 4	6 3/16	1 25/32	1/2	7 3/16	9 3/4	5 1/32	8 5/8
* D0106	6 x 6	9 3/16	3 1/16	23/32	10 3/32	15 5/16	7 7/32	10 23/32
D0108	8 x 8	31 1/2	4 1/4	---	14 5/16	40	9 11/32	---
D0110	10 x 10	29 1/4	5 3/8	---	---	40	11 17/32	---
D0112	12 x 12	30 1/4	6 3/8	---	---	43	13 19/32	---

-- DIMENSIONS AND APPEARANCE ARE APPROXIMATE AND SUBJECT TO CHANGE  
WITHOUT NOTICE DUE TO DESIGN OR PRODUCTION MODIFICATIONS  
-- MOLDED FITTING TOLERANCE =  $\pm 1/8"$  OVERALL LENGTH  
-- FABRICATED FITTING TOLERANCE =  $\pm 1"$  LINEAR,  $\pm 2^\circ$  ANGULAR

\* MOLDED FITTING  
† ASSEMBLED FROM MOLDED COMPONENTS  
ALL OTHER FITTINGS ARE FABRICATED