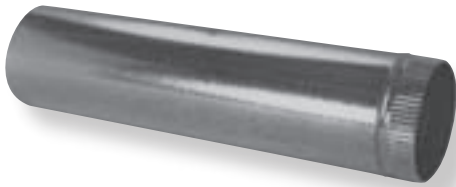


TABLE OF CONTENTS

MITCHELL METAL

PIPE	1
ELBOWS.....	1
FLEX DUCT.....	1
ANGLES	1
WYES.....	2
REDUCERS	2
TEES	2
TEE CAPS	2
DUCTBOARD STARTING COLLARS.....	3
METAL STARTING COLLARS.....	3
AIRTITE TAKE-OFFS, CONICAL AIRTITES, TAKE-OFFS FOR ROUND PIPE.....	4
DAMPERS.....	4
VENTING PRODUCTS	5
CAPS AND FLASHINGS.....	6
INSULATED BOXES	7
BOOT RAILS.....	7
DUCT BOARD INSULATED BOXES.....	8
CEILING RADIATION BOXES.....	8
RECTANGULAR DUCT ACCESSORIES	9
WALL STACK AND FITTINGS	10
STACK BOOTS.....	10
TRUNK DUCT.....	11
CEILING BOXES / REGISTER BOOTS.....	12-13
RECTANGULAR TAKE-OFF FOR METAL.....	14
RECTANGULAR TAKE-OFF FOR DUCTBOARD	14
MISCELLANEOUS ITEMS.....	15
MITCH VENT (DOUBLE WALL) TYPE B	16-18

• PIPE •



105 GALVANIZED SNAPLOCK PIPE

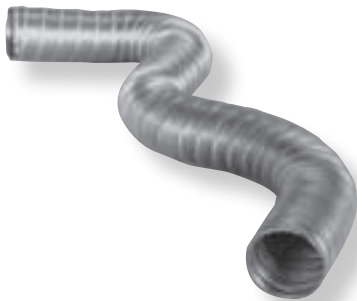
Sizes and Lengths Available:
3" through 12" - 5' lengths 50' per bundle - 30 gauge
14" through 20" - 3' lengths 30' per bundle - 28 gauge
26 gauge and 24 gauge available upon request



110 SEAMED CONDUCTOR PIPE

Sizes and Lengths Available:
3" x 10'
4" x 10'

• FLEX DUCT •



125 ALUMINUM FLEXIBLE DUCT

Sizes and Lengths Available:
3" through 18" - 8' & 10' lengths
With Connection - Can be compressed upon request

130 ALUMINUM FLEXIBLE DUCT

Sizes and Lengths Available:
3" through 18" - 8' & 10' lengths
No connection attached - can be compressed

• ELBOWS •



205 90° GALVANIZED ADJUSTABLE ELBOW

Packed in Donuts:
Sizes and Lengths Available:
3" through 10" - packed 12 per bundle
12" through 20" - packed 4 per bundle
Packed Boxed:
Sizes 4" through 10" - 12 per box

• ANGLES •



215 45° GALVANIZED ANGLE

Sizes 3" through 20" available

• WYES •

• REDUCERS •

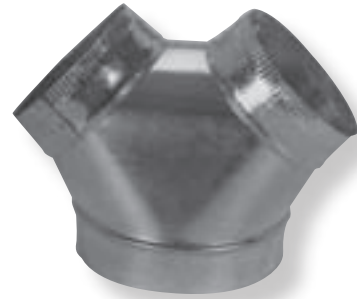
• TEES •



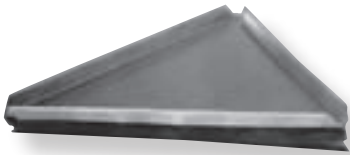
305 STUB WYE



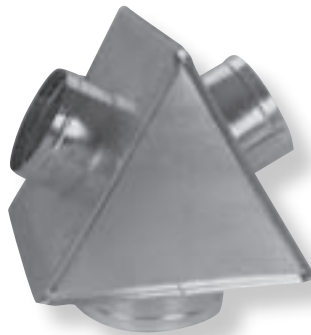
306 FREE FLOW WYE



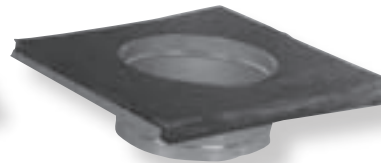
307 BULLHEAD WYE



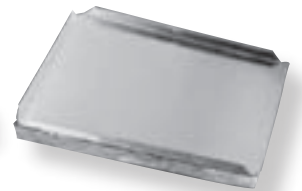
308-C INSULATED END CAP



308-I ASSEMBLED INSULATED WYE



308-P UNASSEMBLED INSULATED SIDE PANEL



308-SQ INSULATED SQUARE WYE CAP



310 REDUCERS

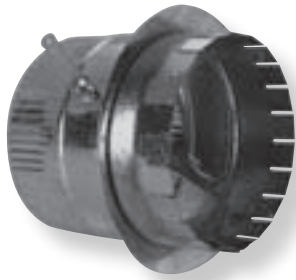


320 TEE

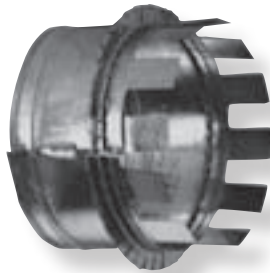


330 TEE CAP

• DUCTBOARD STARTING COLLARS •



**350 DUCTBOARD
STARTING COLLAR**
355 WITH DAMPER



**3520C SAFETY TAB STARTING
COLLAR**
**3525 SEALED SAFETY TAB
STARTING COLLAR**



**370 DUCTBOARD SPIN-IN
STARTING COLLAR**
375 WITH DAMPER
390 WITH SCOOP
**395 WITH SCOOP AND
DAMPER**

• METAL STARTING COLLARS •



340 METAL TAB COLLAR
345 WITH DAMPER



**360 METAL SPIN-IN
STARTING COLLAR**
365 WITH DAMPER
380 WITH SCOOP
**385 WITH SCOOP AND
DAMPER**



386 CONICAL SPIN-IN
387 WITH SCOOP
388 WITH DAMPER
**389 WITH SCOOP AND
DAMPER**



916 FLEX CONNECTOR

**ALL METAL AND
DUCTBOARD STARTING
COLLARS ARE AVAILABLE
WITH STAND-OFF
QUADRANT**

• **AIRTITE TAKE-OFFS & CONICAL AIRTITE** •



396 AT
397 ATD
399S ATS
399 ATSD



398 AT 90°

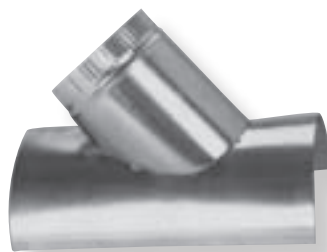


CONICAL AIRTITE
327 ATC
328 ATCD
329 ATCS
331 ATCSD

• **AIRTITE TAKE-OFFS FOR ROUND PIPE** •



396R ATR
397R ATRD
399RS ATRS
399R ATRSD



309 AT 45° AIRTITE
SADDLE TAKE-OFF

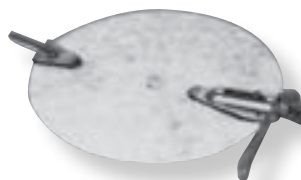
AT = AIRTITE
S = SCOOP
D = DAMPER
C = CONICAL
R = ROUND PIPE
90 = ELBOW

ALSO AVAILABLE WITH
STAND-OFF QUADRANT

• **DAMPERS** •



905 BUTTERFLY DAMPER

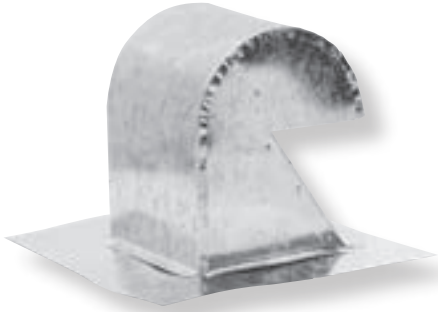


915 REGULAR DAMPER

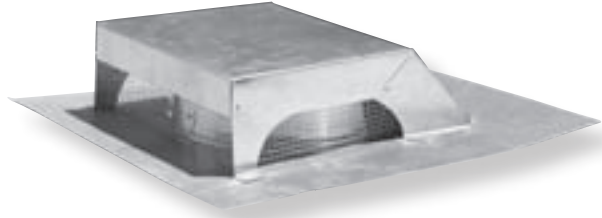


935 INLINE DAMPER

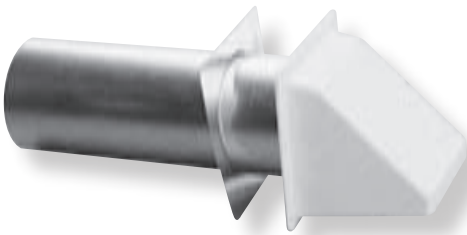
• VENTING PRODUCTS •



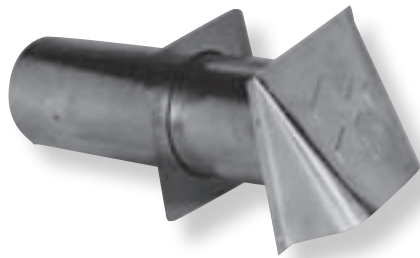
410 FLORIDA GOOSENECK FLASHING
411 FLORIDA GOOSENECK FLASHING
with damper



415 CANOPY VENTS
416 BLACK CANOPY VENT



878 WHITE PLASTIC WALL CAP
879 BROWN PLASTIC WALL CAP



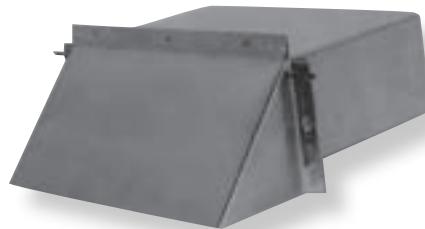
880 ALUMINUM DRYER VENT



881 GALVANIZED DRYER VENT

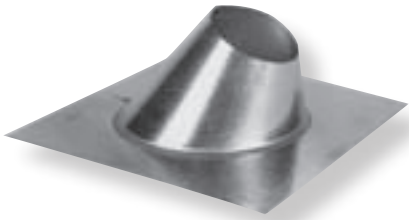


882G GALVANIZED FOUNDATION VENT
882A ALUMINUM FOUNDATION VENT
(Specify screen or damper, or both)



890 RECTANGLE WALL VENT

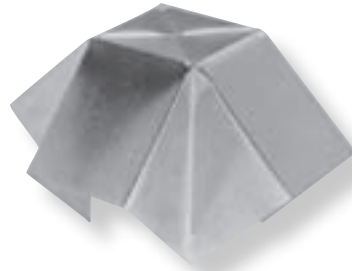
• CAPS & FLASHINGS •



400 ADJUSTABLE FLASHING



405 TEXAS FLASHING



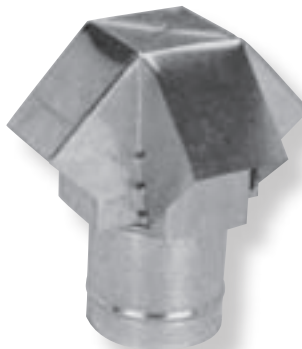
420 TEXAS CAP



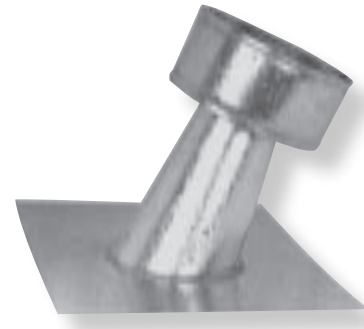
425 CONICAL CAP



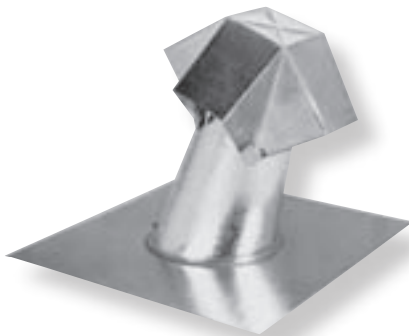
430 WINDBAND CAP



435 BELMONT CAP



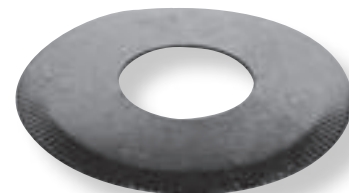
445 WINDBAND CAP-FLASHING COMBINATION



448 TEXAS CAP-FLASHING COMBINATION

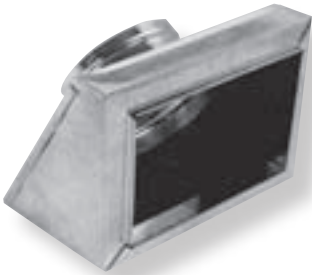


455 STORM COLLAR
(single wall)



460 CEILING PLATE

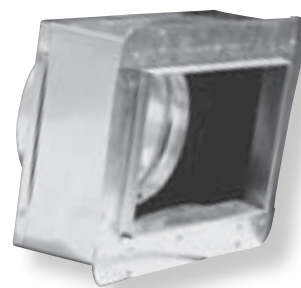
• INSULATED PRODUCTS •



**500 SLANT TOP ALL METAL
510 WITH FLANGES FOR
RAILS**



535 4" HIGH BOX



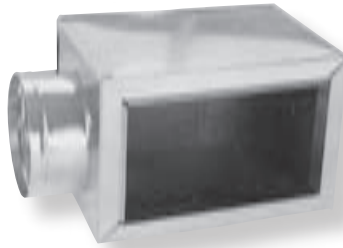
**545 WITH FLANGE FOR
RAILS**



**605 6" HIGH BOX,
INSULATED**



**606 6" HIGH CEILING BOX
WITH TOP FLANGE**



610EO 9" HIGH BOX, END OUT



**615SO 9" HIGH BOX,
SIDE OUT**



**630NH 9" HIGH BOX,
NO HOLE**

INSULATED REGISTER
BOXES ARE AVAILABLE
WITH R-4 OR R-6 INS.
VALUES. FLANGES,
DAMPERS AND RAILS
AVAILABLE FOR ALL BOXES

• BOOT RAILS 26" LONG •



946 BOOT CLIP



947 DRIVE CLEAT

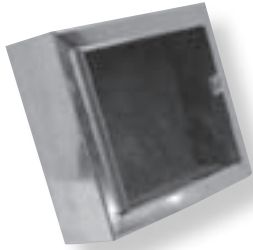


948 1" X 1/2" ANGLE RAIL



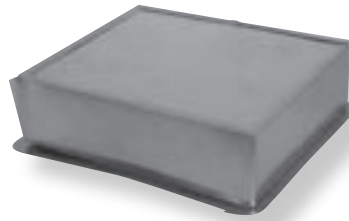
949 S RAIL

• **DUCT BOARD INSULATED** •



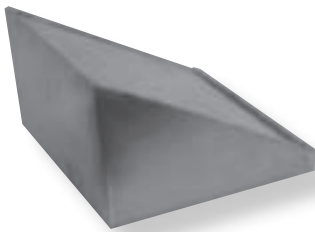
**600 (R4)
600R (R6)**

**DUCT BOARD INSULATED
4" TALL REGISTER BOX**



**650 (R4)
650R (R6)**

**DUCT BOARD INSULATED
4" TALL REGISTER BOX W/FLANGE**



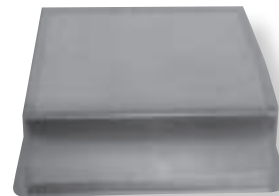
**620 (R4)
625 (R6)**

**SLANT TOP DUCT BOARD
INSULATED REGISTER BOX**



**640 (R4)
645 (R6)**

**SLANT TOP DUCT BOARD
INSULATED REGISTER BOX
WITH FLANGE**



**675 (R4)
675R (R6)**

**RETURN AIR BOX
DUCT BOARD
INSULATED**

• **CEILING RADIATION BOXES WITH DAMPERS** •



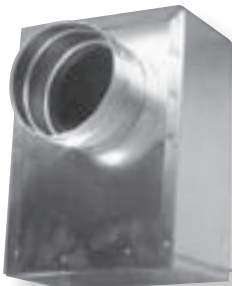
631 INSULATED TOP COLLAR



632 INSULATED SIDE COLLAR



633 UNINSULATED SIDE COLLAR



635 INSULATED SIDE COLLAR



**636 INSULATED TOP OUT
7.5" HIGH**



637 UNINSULATED 90 DEGREE

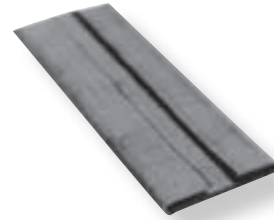
◦ RECTANGLE DUCT ACCESSORIES ◦



90010 STANDING "S"
10' LENGTHS



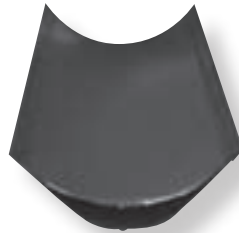
9015 5' FLAT "S"
90110 10' FLAT "S"



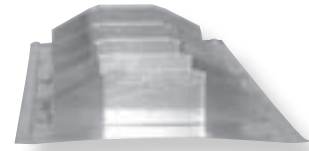
9025 5' DRIVE
90210 10' DRIVE



903 ANGLE 1" X 1/2"
904 ANGLE 2" X 2"
905 ANGLE 2" X 2 1/2"
8' & 10' LENGTHS



906 4" TURNING VANE
909 2" TURNING VANE



907 4" TURNING VANE RAIL
908 2" TURNING VANE RAIL



9208 8' LINE COVERS
92010 10' LINE COVERS



921 LINE SET
COVER CAPS



925 DRAIN PANS



951 RECTANGULAR TRANSITION,
INSULATED



953 PLENUM, INSULATED
954 PLENUM, UNINSULATED



895 RETURN AIR BOXES
896 RETURN AIR BOX
WITH RACK

952 RECTANGULAR TRANSITION,
UNINSULATED

• WALL STACK AND FITTINGS •



760 CENTER TAPER STACK BOOT



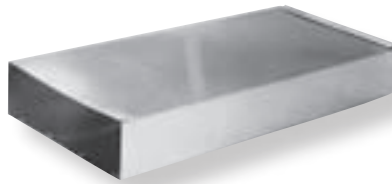
765 OFFSET STACK BOOT



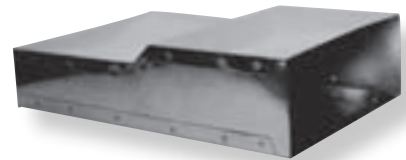
770 90° SIDE TAP STACK BOOT



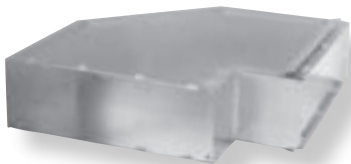
775 END TAP STACK BOOT



790 RECTANGULAR DUCT
Available in 2', 3', 4', 5' & 8'
Lengths



795 STRAIGHT REGISTER HEAD



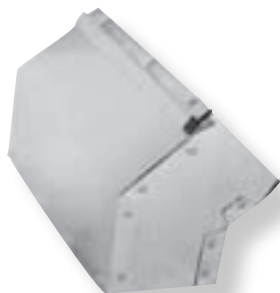
810 LONG WAY ELBOWS HORIZONTAL 90°



811 LONG WAY 45° ANGLE



815 SHORT WAY ELBOWS VERTICAL 90°

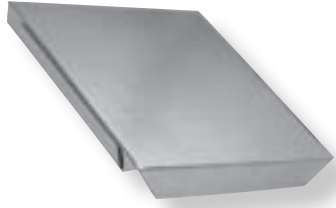


816 SHORT WAY 45° ANGLE



820 SIDEWALL REGISTER HEAD 12" THROAT

• TRUNK DUCT •



966 END CAP



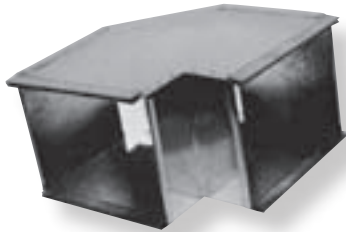
967-4 48" TRUNK DUCT
967-5 60" TRUNK DUCT



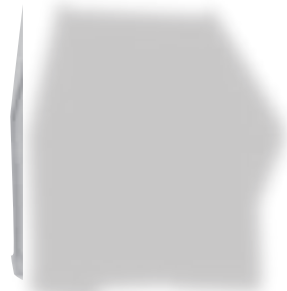
968 LONG WAY ANGLE



969 SHORT WAY 90° ELBOW



970 LONG WAY 90° ELBOW



971 SHORT WAY ANGLE



972 REDUCER ADAPTOR

CUSTOMER SERVICE

**WE PROMISE PERSONAL
CUSTOMER SERVICE AND
SATISFACTION. WHEN
YOU CALL US, YOU WILL
SPEAK DIRECTLY WITH
A MEMBER OF OUR
FRIENDLY STAFF.**

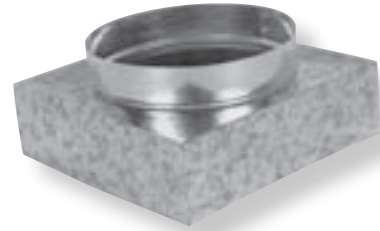
• REGISTER BOOTS •



700 STRAIGHT BOOT



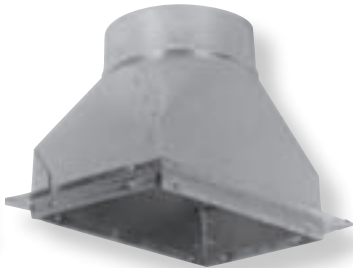
705 HEMMED BOOT



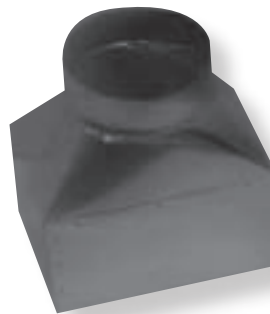
706 3" HIGH DIFFUSER BOX



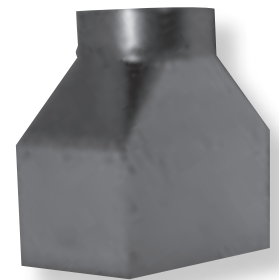
710 STRAIGHT FLOOR BOOT
1/2" FLANGE



720 STRAIGHT BOOT
1" FLANGE



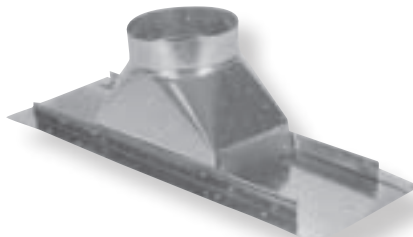
725 STRAIGHT BOOT
6" EXTENSION



730 STRAIGHT BOOT
1" FLANGE &
6" EXTENSION



731 90° 6" EXTENSION BOOT
1" FLANGE

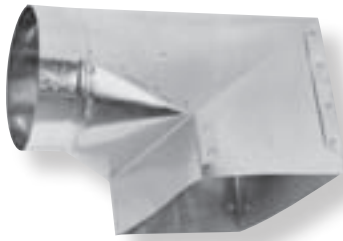


735 STRAIGHT BOOT WITH PAN
16" OR 25" AVAILABLE



740 STRAIGHT BACK BOOT

• REGISTER BOOTS •



745 90° SIDE TAP



746 90° SIDE TAP

16" or 25" Flange



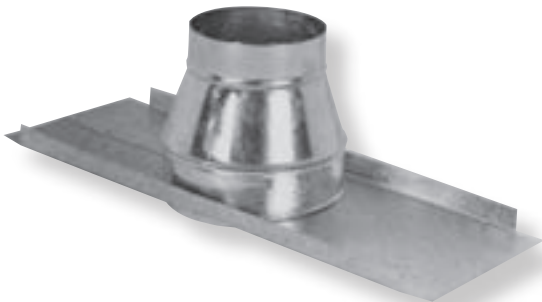
748 PLASTER FRAME



750 END BOOT



751 END BOOT WITH 1" FLANGE



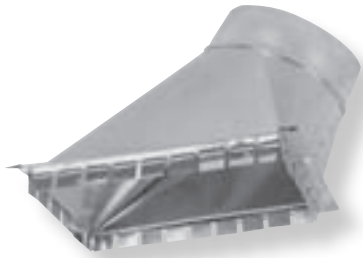
785 ROUND CEILING BOX

(Specify 16" or 25" Flg.)

SPECIALTY ITEMS

WE CAN DESIGN CUSTOM MADE
ITEMS TO MEET YOUR REQUESTS
AND SPECIFICATIONS

◦ RECTANGULAR TAKE-OFF FOR METAL ◦



**830 45° RECTANGULAR
TAKE-OFF FOR METAL**



831 45° WITH GASKET



**850 STRAIGHT SIDE TAKE-OFF
FOR METAL**



851 STRAIGHT WITH GASKET

**840 RECTANGULAR TAKE-OFF
FOR METAL WITH
ADJUSTABLE TOP**

◦ RECTANGULAR TAKE-OFF FOR DUCTBOARD ◦

Dampers available upon request • Gaskets available on all take-offs



**835 45° RECTANGULAR TAKE-OFF
FOR DUCTBOARD**

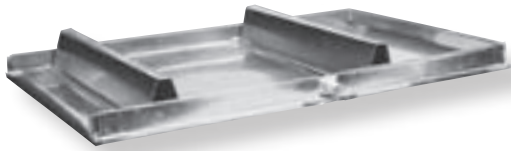


**845 RECTANGULAR TAKE-OFF FOR
DUCTBOARD WITH ADJUSTABLE TOP**



855 STRAIGHT FOR DUCTBOARD

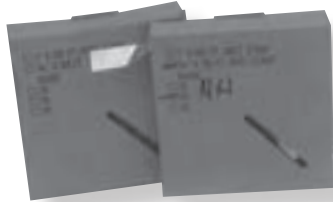
• MISCELLANEOUS ITEMS •



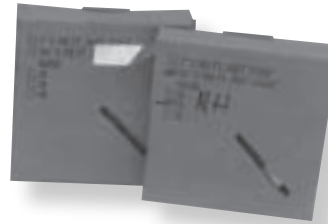
121 DRAIN PAN PLATFORM



122 GAS FURNACE PLATFORM



PERFORATED HANGING STRAP
961 - 3/4" 28 GA.



SOLID HANGING STRAP
9651 - 1" 26 GA.
9652 - 1" 22 GA.
9653 - 1" 18 GA.
9654 - 2" 26 GA.



119 UP FLOW HEATER STAND



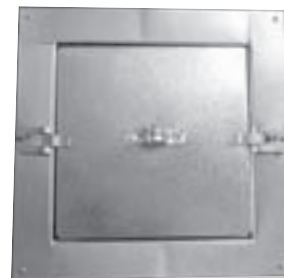
7484 4" HORIZONTAL HEATER STAND
7486 6" HORIZONTAL HEATER STAND



923 SEALANT TAPE



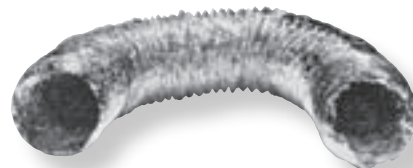
92210 10' UP THE WALL DRYER STACK



122 INSULATED DUCT ACCESS DOOR



WHITE VINYL FLEX
8653 3" X 50'
8654 4" X 50'



ALUMINUM FOIL FLEX
8663 3" X 50'
8664 4" X 50'

INDEX BY PRODUCT

MITCHELL METAL

AIRTITES.....	4
ANGLE 1" X 1/2".....	9
ANGLES, 45°.....	1
ANGLE RAIL.....	7
BOOTS, STRAIGHT.....	12
BOOTS, 90°.....	13
BOOTS, END.....	13
BOOT CLIP.....	7
CANOPY VENTS.....	5
CAP, BELMONT.....	6
CAP, CONICAL.....	6
CAP, TEXAS.....	6
CAP, WINDBAND.....	6
CAP/FLASHING COMBINATIONS.....	6
CEILING BOX.....	13
CEILING PLATE, SINGLE WALL.....	6
CEILING RADIATION BOXES.....	8
DAMPERS.....	4
DRAIN PANS.....	9
DRAIN PAN PLATFORMS.....	15
DRIVE, 5' & 10'.....	9
DRIVE CLEAT.....	7
DRYER VENTS.....	5
DUCTBOARD INSULATED BOXES.....	8
ELBOWS, 90° ADJUSTABLE.....	1
FLASHING, ADJUSTABLE.....	6
FLASHING, FLORIDA GOOSENECK.....	5
FLASHING, TEXAS.....	6
FLEX, VINYL.....	15
FLEX, ALUMINUM FOIL.....	15
FLEXIBLE DUCT, ALUMINUM.....	1
FLEX CONNECTOR.....	3
FOUNDATION VENT.....	5
GAS TYPE "B" VENT PIPE AND FITTINGS.....	16-18
GAS FURNACE PLATFORM.....	15
HANGING STRAP.....	15

HEATER STANDS.....	15
INSULATED BOXES, 4" HIGH.....	7
INSULATED BOXES, 6" HIGH.....	7
INSULATED BOXES, 9" HIGH.....	7
INSULATED BOXES, SLANT TOP.....	7
INSULATED END CAP.....	2
INSULATED SQUARE WYE CAP.....	2
LINE COVERS.....	9
LINE SET COVER CAPS.....	9
PIPE, GALVANIZED SNAPLOCK.....	1
PIPE, SEAMED CONDUCTOR.....	1
PLASTER FRAME.....	13
PLASTIC WALL CAPS.....	5
PLENUMS.....	9
RECTANGULAR DUCT.....	10
RECTANGULAR TAKEOFFS.....	14
RECTANGULAR TRANSITIONS.....	9
RECTANGULAR WALL VENT.....	5
REDUCER.....	2
REDUCER ADAPTOR.....	11
RETURN AIR BOXES.....	9
"S" RAIL.....	7
"S", FLAT.....	9
"S", STANDING.....	9
SEALANT TAPE.....	15
STACK BOOTS.....	10
STARTING COLLAR, DUCT BOARD.....	3
STARTING COLLAR, METAL.....	3
STARTING COLLAR, SAFETY TAB.....	3
STORM COLLAR, SINGLE WALL.....	6
TEE.....	2
TEE CAP.....	2
TRUNK DUCT.....	11
TURNING VANE.....	9
TURNING VANE RAIL.....	9
UP THE WALL DRYER STACKS.....	15
WYES.....	2

MITCHELL METAL