



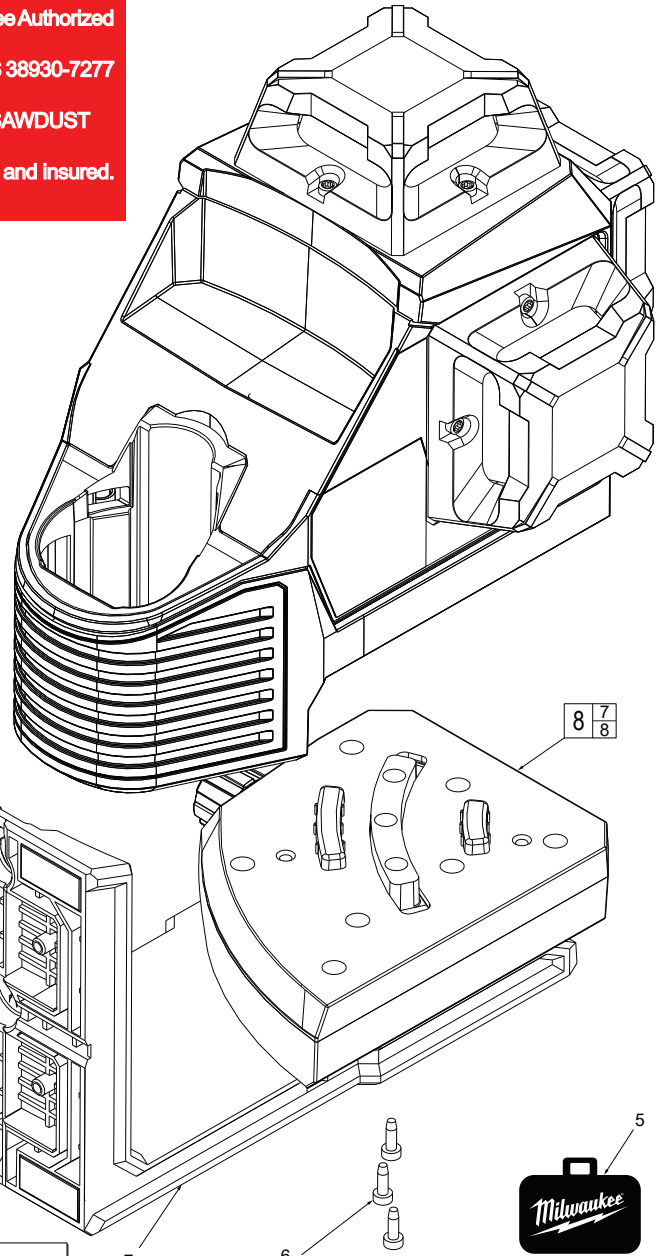
SERVICE PARTS LIST

BULLETIN NO.
54-07-3530

| SPECIFY CATALOG NO. AND SERIAL NO. WHEN ORDERING PARTS | | REVISED BULLETIN | DATE |
|--|----------------|----------------------------|--------------------|
| M12™ 3 Plane Laser | | | Oct. 2020 |
| CATALOG NO. | 3632-20 | STARTING SERIAL NO. | L43A |
| | | | WIRING INSTRUCTION |

Service needs pertaining to accuracy or calibration can only be performed at Milwaukee Authorized Repair Centers:
MILWAUKEE ELECTRIC TOOL central repair 1401 Sycamore Ave. Greenwood, MS 38930-7277
 OR
 Via e-Service at: www.milwaukeetool.com/e-service. Questions, please call 1.800.SAWDUST
 OR
 Return it to a **MILWAUKEE FACTORY SERVICE CENTER** location, freight prepaid and insured.
 A copy of the proof of purchase should be included with the return product."

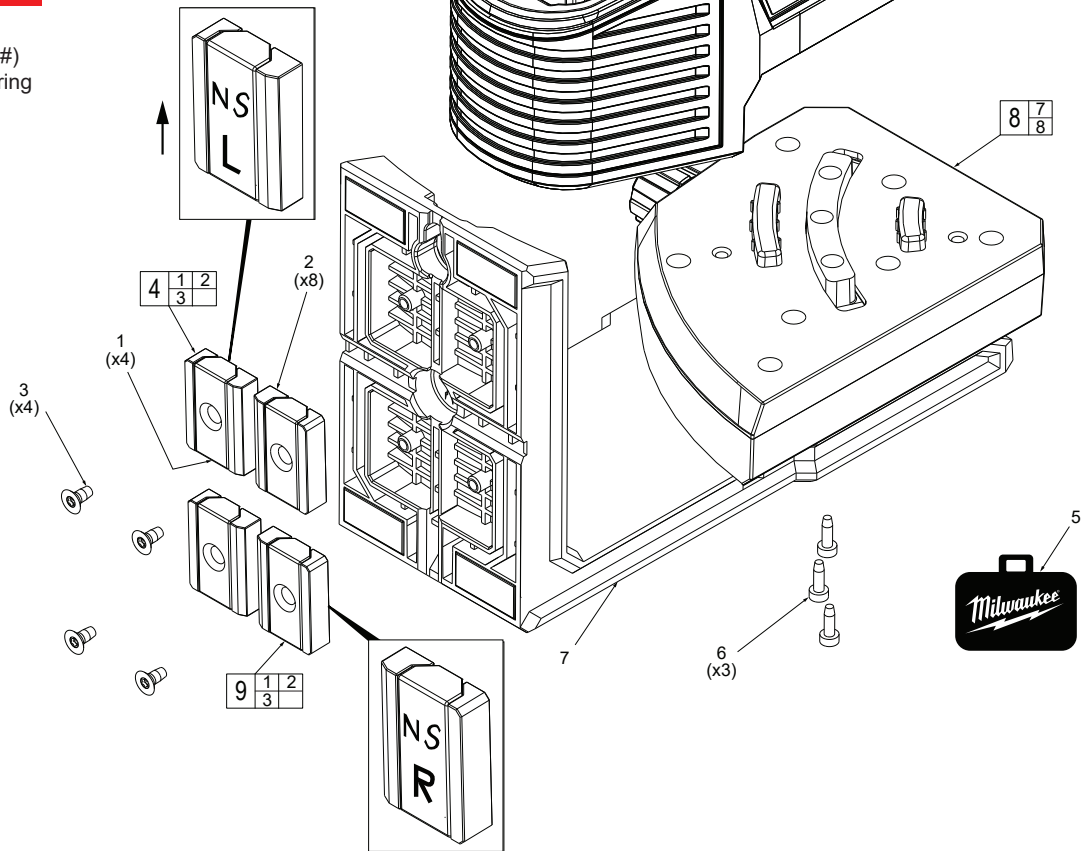
Inspect sticker applied to the face of the Magnet (1). Orient the Magnet and Steel Strap (2) so that the "N/S" faces in the upward direction relative to the tool. The left (L) is inserted into the left side of the bracket and the right (R) magnet is inserted into the right side. Insert the Magnet and Steel Strap into the mount so that the post aligns with the inner diameter on the magnet. After the Magnet and Steel Strap is inserted into the mount, the sticker (3) can be removed and the screws (3) can be hand tightened. Do not over tighten.



EXAMPLE:

| | |
|----|---|
| 00 | 0 |
|----|---|

 Component Parts (Small #)
 Are Included When Ordering
 The Assembly (Large #).



| FIG. | PART NO. | DESCRIPTION OF PART | NO. REQ. |
|------|------------|-------------------------------|----------|
| 1 | ----- | Magnet | (4) |
| 2 | ----- | Steel Strap | (8) |
| 3 | ----- | M3 X 6mm FH ST T10 Screw | (4) |
| 4 | 44-26-0135 | Left Magnet Assembly | (2) |
| 5 | 42-55-0208 | BMC | (1) |
| 6 | ----- | M2.5 x 9.8mm Pan Hd. ST T8 | (3) |
| 7 | ----- | L Bracket w/ Base | (1) |
| 8 | 31-10-0040 | Mount Assembly | (1) |
| 9 | 44-26-0140 | Right Magnet Assembly | (2) |
| 10 | 12-20-3632 | Service Nameplate (Not Shown) | (1) |

FIG. 10 NOTES
 A clean, dry surface is essential for proper performance for any adhesive system. The area intended for application of any adhesive label or nameplate must be prepared by cleaning with isopropyl alcohol. The solvent is to be applied with a clean, lint free applicator and the surface allowed to dry before applying the label or nameplate.