

## 5821-W

Single Receptacle Outlet, Commercial Specification Grade, Smooth Face, 20 Amp, 250 Volt, Side Wire, NEMA 6-20R, 2-Pole, 3-Wire - White

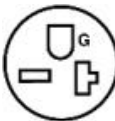


Color :  White

UPC Code : 078477249871

Country Of Origin : United States

RoHS Compliant : Yes

NEMA :  6-20R

Available Colors :



Brown



Ivory



Light Almond

### Technical Information

AC Horsepower Ratings

**At Rated Voltage** : 2 HP

Electrical Specifications

**Amperage** : 20 A

**Current Limiting** : Full Rated Current

**Dielectric Voltage** : Withstands 2000V per UL498

**Pole** : 2

**Temperature Rise** : Max 30C after 100 cycles OL at 150 percent rated current

**Voltage** : 250 VAC

**Wire** : 3

Environmental Specifications

**Flammability** : Rated V-2 per UL 94

**Operating Temperature** : -40°C to 60°C

Material Specifications

**Body Material** : Nylon

**Color** : White

**Face Material** : Nylon

**Grounding Screw** : Brass 8-32

**Line Contacts** : Brass Double Wipe .031 Thick

**Strap Material** : Zinc-Plated Steel

**Terminal Screws** : Brass 8-32

Mechanical Specifications

**Product ID** : Ratings are permanently marked on device

**Screw Terminal Torque** : 14-18 in-lbs

**Terminal Accom.** : 14-10 AWG

**Terminal ID** : Brass-Hot, Green-Ground, Silver-Neutral

**Termination** : Side Wire

Product Features

**Device Type** : Single Receptacle Outlet

**Grade** : Commercial Specification Grade

**NEMA** : 6-20R

Standards and Certifications

**ANSI** : C-73

**CSA C22.2 No. 42** : File 152105

**NEMA** : WD-1 & WD-6

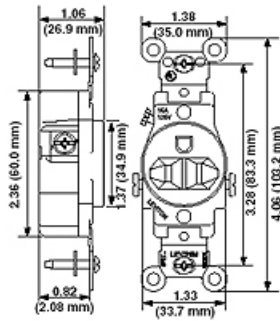
**NOM** : 057

**UL Fed Spec WC-596** : File E13399

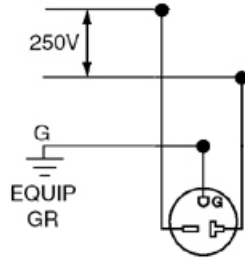
**UL498** : File E13399

**Warranty** : 10-Year Limited

**Dimensional Diagram**



**Wiring Diagram**



6-20R

**SPECIFICATION SUBMITTAL**

JOB NAME: <input type="text"/>	CATALOG NUMBERS: <input type="text"/>	
JOB NUMBER: <input type="text"/>	<input type="text"/>	<input type="text"/>

**Leviton Manufacturing Co., Inc.**

201 North Service Road, Melville, NY 11747

Telephone: +1-800-323-8920 · FAX: +1-800-832-9538 · Tech Line (8:30AM-7:30PM E.S.T. Monday-Friday):

+1-800-824-3005

**Leviton Manufacturing of Canada, Ltd.**

165 Hymus Boulevard, Pointe Claire, Quebec H9R 1E9 · Telephone: +1-800-469-7890 ·

FAX: +1-800-824-3005 · www.leviton.com/canada

**Leviton S. de R.L. de C.V.**

Lago Tana 43, Mexico DF, Mexico CP 11290 · Tel.: (+52)55-5082-1040 · FAX: (+52)5386-

1797 · www.leviton.com.mx

Visit our Website at: [www.leviton.com](http://www.leviton.com)

© 2021 Leviton Manufacturing Co., Inc. All Rights Reserved. Subject to change without notice.

**Leviton has a global presence.**

If you would like to know where your local Leviton office is located please go to:

[www.leviton.com/international/contacts/](http://www.leviton.com/international/contacts/)

