

KECKLEY COMPANY
3400 Cleveland Street P.O. Box 67
Skokie, IL 60076
800-KECKLEY (800.532.5539)
847.674.8422
FAX 847.674.2106
email: sales@keckley.com
website: www.keckley.com

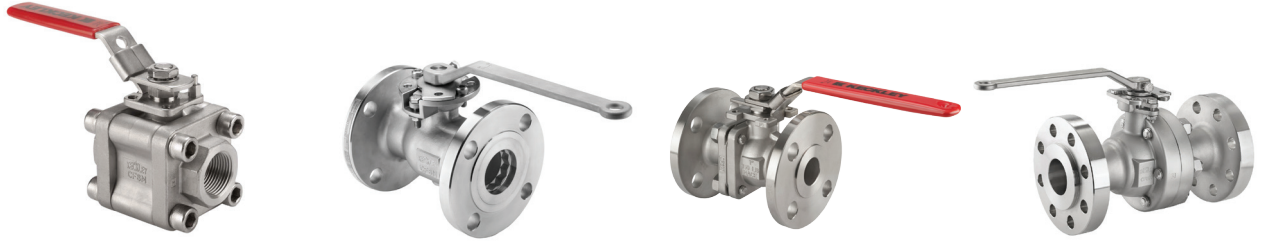
Established 1914



Description	BVS2	BVSC	BVS3	BVS6
Size	1/4" - 4"	1/4" - 2"	1/4" - 2"	1/4" - 2"
Pressure Class	2160 WOG	Class 900 (2160 WOG)	Class 1500 (3600 WOG)	Class 2500 (6000 WOG)
End Connection	FNPT or MNPT x FNPT	FNPT or Socket Weld ¹	FNPT or Socket Weld ¹	FNPT or Socket Weld
Port Size	Full Port	Full Port	Full Port (1/4", 1/2", 3/4", 1", 1 1/2") Reduced Port (3/8", 1", 2")	Full Port (1/4", 1/2", 3/4", 1", 1 1/2") Reduced Port (3/8", 1", 2")
Body/Trim Material	WCB / 316ss or CF8M / 316ss	WCB / 316ss or CF8M / 316ss	WCB / 316ss or CF8M / 316ss	WCB / 316ss or CF8M / 316ss
Seat Material	R-PTFE (Available Options PEEK)	R-PTFE (Available Options PEEK)	Delrin AF (Available Options PEEK)	PEEK
Handle	304ss Latch Lock (Optional: 304ss Locking Oval)	304ss Latch Lock (Optional: 304ss Locking Oval)	304ss Latch Lock (Optional: 304ss Locking Oval)	304ss Latch Lock (Optional: 304ss Locking Oval)
Features	<ul style="list-style-type: none"> Seal Welded API 607 6th Edition Fire-Safe NACE MR0175 Compliant Standard ISO Actuator Mounting Pads on all Sizes 	<ul style="list-style-type: none"> Seal Welded ASME B16.34 Class 900 Fully Compliant to API 608 API 607 6th Edition Fire-Safe NACE MR0175 Compliant Standard ISO Actuator Mounting Pads on all Sizes 	<ul style="list-style-type: none"> Seal Welded ASME B16.34 Class 1500 Fully Compliant to API 608 API 607 6th Edition Fire-Safe NACE MR0175 Compliant Standard ISO Actuator Mounting Pads on all Sizes 	<ul style="list-style-type: none"> Seal Welded ASME B16.34 Class 2500 Fully Compliant to API 608 API 607 6th Edition Fire-Safe NACE MR0175 Compliant Standard ISO Actuator Mounting Pads on all Sizes
Note(s):	1. Seal Material Graphite.	1. PEEK Seats required for Socket Weld Ends. 2. Seal Material Graphite.	1. PEEK Seats required for Socket Weld Ends. 2. Seal Material Graphite.	1. Seal Material Graphite.

ASME (A 351, CF8M) Pressure Temperature Ratings (PSIG) (Standard Seats)

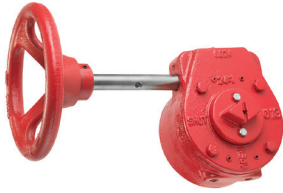
100°F	2160 PSI (1/4" - 2")	2160 PSI	3600 PSI	6000 PSI
200°F	1600 PSI (1/4" - 2")	1633 PSI	[Max 185°F = 2000 PSI]	5000 PSI
300°F	1040 PSI (1/4" - 2")	1105 PSI	Not Rated	4000 PSI
350°F	760 PSI	841 PSI	Not Rated	3500 PSI
400°F	480 PSI	578 PSI	Not Rated	3000 PSI
450°F	200 PSI	314 PSI	Not Rated	1000 PSI
500°F	Not Rated	50 PSI	Not Rated	200 PSI



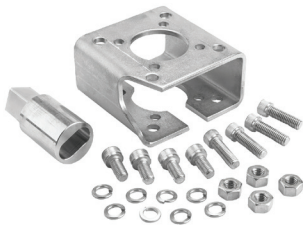
Description	BVM3	BVF1	BVF2	BVF2
Size	1/4" - 2 1/2"	1/2" - 6"	1/2" - 8"	1 1/2" - 4", 6"
Pressure Rating	Class 800 (1920 WOG)	Class 150 & Class 300	Class 150 & Class 300	Class 600
End Connection	NPT or Socket Weld ¹	150# Flanged RF & 300# Flanged RF	150# Flanged RF & 300# Flanged RF	600# Flanged RF or RTJ
Port Size	Full Port & Reduced Port	Reduced Port	Full Port	Full Port (1 1/2", 2", 3", 4") Reduced Port (6")
Body/Trim Material	WCB / 316ss or CF8M / 316ss	WCB / 316ss or CF8M / 316ss	WCB / 316ss or CF8M / 316ss	WCB / 316ss or CF8M / 316ss
Seat Material	R-PTFE (Available Options PEEK)	R-PTFE (Available Options PEEK)	R-PTFE (Available Options PEEK)	R-PTFE
Handle	304ss Latch Lock (Optional: 304ss Locking Oval)	304ss Latch Lock (1/2" - 1") 304ss Locking (1" - 6")	304ss Latch Lock (1/2" - 1") 304ss Locking (1" - 6") Bare Stem (8")	304ss Locking
Features	<ul style="list-style-type: none"> 3-Piece Maintenance Design ASME B16.34 Class 800 Fully Compliant to API 608 API 607 6th Edition Fire-Safe NACE MR0175 Compliant ISO 5211 Actuator Mounting Pads on all Sizes 	<ul style="list-style-type: none"> Unibody Design ASME B16.34 Compliant Fully Compliant to API 608 API 607 6th Edition Fire-Safe NACE MR0175 Compliant Standard ISO Actuator Mounting Pads on all Sizes 	<ul style="list-style-type: none"> 2-Piece Bolted Body ASME B16.34 Compliant Fully Compliant to API 608 API 607 6th Edition Fire-Safe NACE MR0175 Compliant Standard ISO Actuator Mounting Pads on all Sizes 	<ul style="list-style-type: none"> 2-Piece Bolted Body ASME B16.34 Compliant Fully Compliant to API 608 API 607 6th Edition Fire-Safe NACE MR0175 Compliant Standard ISO Actuator Mounting Pads on all Sizes
Note(s):	1. PEEK Seats required for Socket Weld Ends. 2. Seal Material Graphite.	1. Seal Material Graphite.	1. Seal Material Graphite.	1. Seal Material Graphite.

ASME (A 351, CF8M) Pressure Temperature Ratings (PSIG) (Standard Seats)

		150lb	300lb	150lb	300lb	600lb
100°F	1920 PSI	275 PSI	720 PSI	275 PSI	720 PSI	1440 PSI
200°F	1654 PSI	235 PSI	620 PSI	235 PSI	620 PSI	1100 PSI
300°F	1217 PSI	215 PSI	560 PSI	215 PSI	560 PSI	900 PSI
350°F	925 PSI	205 PSI	537 PSI	205 PSI	537 PSI	800 PSI
400°F	633 PSI	195 PSI	515 PSI	195 PSI	515 PSI	515 PSI
450°F	342 PSI	182 PSI	298 PSI	182 PSI	298 PSI	298 PSI
500°F	50 PSI	50 PSI	50 PSI	50 PSI	50 PSI	50 PSI



Description	Gear Operators (GO)	Double Acting Actuators (DA)	Spring Return Actuators (SR)
Features	<ul style="list-style-type: none"> • 1,000 to 18,000 in-lb Models • ISO Mounting Patterns • Standard ISO Actuator • Weatherproof Design with External Lubrication Fitting • External Failure Upon Over-torque 	<ul style="list-style-type: none"> • 125 to 11,000 in-lb Models • ISO 5211 Mounting Patterns • NAMUR Solenoid and Topworks Mounting Patterns • Dual Positions Limit Stops • Stainless Steel Fasteners • Epoxy Coated End Caps • Hard Anodized Body • Standard Position Indicator • Internally Retained Output Shaft • "Double Square" Output Shaft Broaching 	<ul style="list-style-type: none"> • 250 to 7,000 in-lb Models • ISO 5211 Mounting Patterns • NAMUR Solenoid and Topworks Mounting Patterns • Dual Positions Limit Stops • Stainless Steel Fasteners • Epoxy Coated End Caps • Hard Anodized Body • Encapsulated Spring Assemblies • Standard Position Indicator • Internally Retained Output Shaft • "Double Square" Output Shaft Broaching



Description	Mounting Hardware	Limit Switch (LS)	Solenoids (SOL)
Features	<ul style="list-style-type: none"> • Stainless Steel Brackets with Notched Cut-out for Easy Access to Valve Packing Nut • Stainless Steel Couplers • Stainless Steel Fasteners • Complete ISO 5211 Mounting 	<ul style="list-style-type: none"> • Visual Position Indicator • Easy Adjustment of Cam Position • Eight (8) Contacts of Terminal Ports • 1/2" Dual Conduit Entries • NAMUR Mounting Capabilities • Standard IP67 Enclosure 16 Amp 115VAC Rated Switches • Two (2) SPDT Switches 	<ul style="list-style-type: none"> • NAMUR Mounting Capabilities • Convertible from 3-way to 4-way for DA and SR • Inlet and Exhaust - 1/4 NPT • Cylinder Ports - O-Ring Seal Per NAMUR Standard • Standard NEMA 4 • UL Listed
Option(s):		<ol style="list-style-type: none"> 1. NEMA 4/4x (Standard) 2. NEMA 4/4x, 7 & 9 (Explosion Proof) 	<ol style="list-style-type: none"> 1. NEMA 4/4x (Standard) 2. NEMA 4/4x, 7 & 9 (Explosion Proof) 3. 120VAC, 24VDC, & 24VAC Units Available 4. CSA Listing

