

2019 Product Guide

Innovative Products for Irrigation, Lighting, and Gas/Water Utility



KING
INNOVATION®



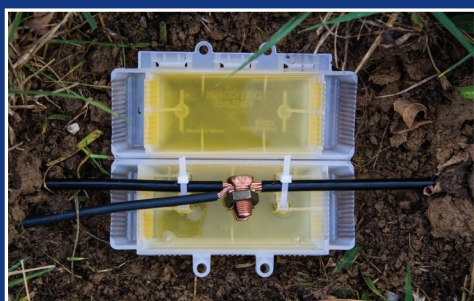
IRRIGATION

King Innovation got its start in Irrigation with King Drains and has since grown in the market because of a commitment to providing quality products. The Black Series Waterproof Connectors have been a constant in the industry and the DryConn brand has expanded to incorporate a variety of waterproof connector styles. King is proud to now offer Blazing brand saddles, fittings and accessories.



LIGHTING

Contractors in the irrigation industry have been using DryConn Waterproof Wire Connectors for years in landscape lighting applications. We have made a commitment to serving customers in this industry with our offering of the Insta-Light® and TreeLight Mount™.



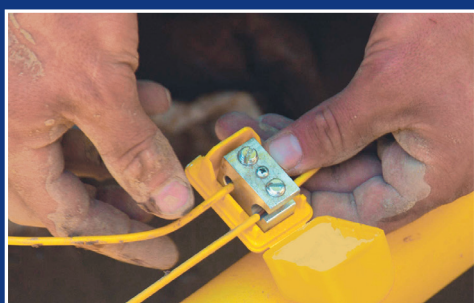
CATHODIC

At King Innovation, protecting splices from harsh outdoor elements like water, temperature and corrosion is what we do best. In the cathodic market, we saw a need for an anode splice box to do just that, and our engineers developed the DryConn Visilock® with SmartGel® to meet this industry's requirements.



WATER UTILITY

King Innovation's interest in the water utility market was spiked when we realized contractors needed a better solution for waterproofing underground tracer wire splices. Our DryConn Direct Bury Lug Aqua ensures safe, waterproof and corrosion proof underground connections without having to cut the main line.



GAS UTILITY

King Innovation's interest in the gas utility market was spiked when we realized contractors needed a better solution for waterproofing underground tracer wire splices. Our DryConn Direct Bury Lug Yellow ensures safe, waterproof and corrosion proof underground connections without having to cut the main line maintaining the integrity of the communication signal.

CONTENTS

MARKETS WE SERVE	2
TABLE OF CONTENTS (YOU ARE HERE!)	3
UL SAFETY	4
DRYCONN® WATERPROOF CONNECTORS	
Black Series	5
DBT-600 & DBR/Y-600	5
DBYN-600 & DBO/B-600	5
CPC-C & CPC-L.....	6
DBR/Y-600 Black	6
DBSR Black Medium.....	6
KSC (King Shrink Crimp).....	7
Dry-Crimp.....	7
Gray/Gray.....	8
DB Power Connect.....	8
Blue/Blue.....	10
Low Voltage Tan	10
316 IR+	10
GTSR (Grease Tube w/Strain Relief).....	10
Direct Bury	18
IDC Connectors.....	20
King 6 Yellow & Blue	20
DB Lug Yellow & Aqua	20
DB Lug PLUS (Yellow & Aqua).....	20
DBSR Yellow & Aqua.....	21
Split Bolt Housing Yellow & Aqua	21
HSC (Heat Shrink Crimp).....	21
Visilock® w/SmartGel.....	21
ACE CONNECTORS™	8
BLAZING™ CONNECTORS	9
KING DRAINS®	11
SNAPTAP® SADDLES	12
BLAZING™ SADDLES	13
BLAZING™ FITTINGS	13
SIPHON KING®	
Siphon King Utility Pumps	14
Siphon King Replacement Parts.....	15
Siphon King Jr.	15
SAPLING SOAKER™	16
BALL BEARING PROBE	16
LEAK-B-GONE™	17
KING GRIPS® & REPLACEMENT PARTS	17
MESH GRIPS	17
GARDNER BENDER CONNECTORS	18
LIGHTING	19
TEST & MEASURE	22-23
TOOLS	24-27
ACCESSORIES	28-32
WIRE MANAGEMENT	33-35
MERCHANDISING DISPLAYS	36-39

CONTACT

42 N. Central Drive
O'Fallon, MO 63366

Phone: 800.633.0232

Fax: 636.519.5410

Engineering Hotline:

877.771.8885

Email:

customerservice

@kinginnovation.com

Website:

kinginnovation.com



RESOURCES



gardnerbender.com



sperryinstruments.com



bergeninc.com



ORDER BY 3:00 CST AND YOUR PRODUCT
WILL BE OUT THE DOOR THAT DAY!



UL SAFETY

The UL Listing is a standard of safety, a mark that guarantees reliable long-term waterproof connections. At King Innovation we maintain a research/development lab and manufacturing facility on-site in O'Fallon, MO to allow for rigorous testing and ongoing quality checks.

Why is UL so important to you?

Liability

Using a connector that does not meet the strict UL standard of quality means a huge liability risk. This risk is virtually eliminated with a UL Listed splice.

Quality

When working with electricity, an unreliable connector is just not an option. A UL listing means safe splices... which means safe irrigation, lighting and electrical systems.

Compliance

A UL connector ensures that you and your customers are in constant compliance with national and local electrical codes in wet, damp and direct bury applications.

What does King do to ensure quality?

Testing

The thorough DryConn testing process ensures that these connectors can withstand 2,200 VAC while submerged, are heat aged and can endure cold... and that's just the beginning.

Manufacturing

A controlled manufacturing process plus the use of superior materials allows DryConn connectors to meet stringent quality requirements. All processes take place in O'Fallon, MO for full visibility and regulation.

3rd Party Audits

Each quarter King is visited by a UL auditor who reviews the manufacturing processes to ensure our quality connector "recipe" is intact.

Never assume all connectors are created equally- that couldn't be further from the truth. Do your research. For a guaranteed safe connection, count on DryConn.

For additional product safety information, call our Engineering Hotline at

(877) 771-8885

DRYCONN® WATERPROOF CONNECTORS

Black® Series The Original Black Connector*

- UL Listed 600V for dry, wet or above/below grade applications when used in an enclosure
- For use in Direct Bury applications when operating at 30V or less
- For use with solid and stranded wire
- Impact resistant
- #1 in the industry
- Waterproof and corrosion proof
- One-step® installation saves time and money
- No pre-twisting required
- Pre-filled with dielectric silicone sealant that never hardens

- SKU# 61135 Black/White- Bag of 25
- SKU# 61145 Black/White- Bag of 100
- SKU# 61146 Black/White- Canister of 150
- SKU# 61148 Black/White- Canister of 500
- SKU# 61235 Black/Gray- Bag of 20
- SKU# 61241 Black/Gray- Canister of 100
- SKU# 61242 Black/Gray- Canister of 500
- SKU# 61245 Black/Gray- Bag of 100
- SKU# 61335 Black/Blue- Bag of 10
- SKU# 61345 Black/Blue- Bag of 50
- SKU# 61350 Black/Blue- Canister of 50
- SKU# 61435 Black/Green- Bag of 20
- SKU# 61441 Black/Green- Canister of 100

Black/White
Min #22/Max #12



Black/Green
Min #22/Max #8



PERFECT FOR LED APPLICATIONS!

Black/Gray
Min #22/Max #8



Black/Blue
Min #14/Max #6



All products available in bags



All products available in canisters



LISTED
SEALED WIRE CONNECTOR SYSTEM
9157



*THE COLOR BLACK IS A TRADEMARK OF KING INNOVATION

DRYCONN® WATERPROOF CONNECTORS



Min #22/Max #8



DBT-600 (Tube with Tan Wing) and DBR/Y-600 (Tube with Red/Yellow Gorilla Nut)

Direct Bury Silicone Filled Tube with Strain Relief

- UL 486D Listed and 600V rated
- For use with solid and stranded wire
- Waterproof and corrosion proof
- Snap fit lid provides strain relief
- UV and impact resistant
- Pre-filled with silicone that never hardens
- Perfect for Two-Wire Decoder Systems

- SKU# 20220 DBT-600- Bag of 2
- SKU# 20225 DBT-600- Box of 100
- SKU# 20230 DBR/Y-600- Bag of 2
- SKU# 20235 DBR/Y-600- Box of 100



Yellow Nut
Min #22/Max #12

Gorilla Nut
Min #22/Max #8

DBYN-600 (Tube with Yellow Nut) and DBO/B-600 (Tube with Orange/Blue Gorilla Nut)

Direct Bury Silicone Filled Tube with Strain Relief

- Perfect for use in two-wire decoder systems and direct bury applications
- For use with solid and stranded wire
- UL 486D Listed for waterproof and direct bury connections
- Max 600V
- UV resistant for above ground applications
- Pre-filled with dielectric silicone sealant that never hardens
- Snap fit lid provides strain relief

- SKU# 20520 DBYN-600- Bag of 2
- SKU# 20525 DBYN-600- Box of 100
- SKU# 20630 DBO/B-600- Bag of 2
- SKU# 20635 DBO/B-600- Box of 100

MADE IN USA OF US AND FOREIGN PARTS

U.S. Pat. 8,431,824 and additional Patents Pending apply. All other trademarks, U.S. and Foreign Patents Pending apply. All Rights Reserved.

IRRIGATION & LIGHTING WIRE CONNECTORS



CPC (Central Point Connector)

- Excellent for making central point connections in low voltage landscape lighting applications
- For use with solid and stranded wire
- Waterproof and corrosion proof
- Strain resistant tube is pre-filled with dielectric silicone sealant that never hardens
- Secure mechanical connection
- Max 50 Volts
- Manufacturer approved for direct bury
- UV and impact resistant
- Blends into landscape, even when not buried



CPC-C (with Crimps)
Min #18/Max #10

CPC-L (with Lug)
Min #18/Max #10

SKU# 20810 CPC-C (with Crimps)- Box of 25
SKU# 20815 CPC-L (with Lug)- Box of 25

MADE IN USA OF US AND FOREIGN PARTS



DBR/Y-600 Black (Tube with Red/Yellow Gorilla Nut)

Direct Bury Silicone Filled Tube with Strain Relief

- UL 486D Listed and 600V rated
- For use with solid and stranded wire
- Waterproof and corrosion proof
- Snap fit lid provides strain relief
- UV and impact resistant
- Pre-filled with silicone that never hardens



Min #22/Max #8



SKU# 20250 DBR/Y-600 Black- Bag of 2
SKU# 20255 DBR/Y-600 Black- Box of 100

MADE IN USA OF US AND FOREIGN PARTS



DBSR® Black Medium Direct Bury Twist-on with Strain Relief

- UL Listed 600V for dry, wet or above/below grade applications when used in an enclosure
- For use in Direct Bury applications when operating at 30V or less
- For use with solid and stranded wire
- Waterproof and corrosion proof
- Pre-filled with dielectric silicone sealant that never hardens
- Easy latch lid provides strain relief



Min #22/Max #6



SKU# 63415 DBSR Black Medium- Canister of 15
SKU# 63475 DBSR Black Medium- Box of 100

U.S. Pat. 7,170,005, 6,815,616, 7,122,742 and additional Patents Pending apply.
All other trademarks, U.S. and Foreign Patents Pending apply. All Rights Reserved.



KSC (King Shrink Crimp)

- For use in landscape lighting or wherever an in-line electrical splice is required
- For use with solid and stranded wire
- Crimp style connector with waterproof heat shrink
- Use with King Krimper tool (#46550) and Mini-Torch (#43010)



Visit www.kinginnovation.com/ksc-king-shrink-crimp-connectors for a complete list of KSC wire combinations

SKU# 72010 KSC-1 (Extra Small)- Bag of 20
SKU# 72020 KSC-2 (Small)- Bag of 20
SKU# 72030 KSC-3 (Medium)- Bag of 20
SKU# 72040 KSC-4 (Large)- Bag of 8

KSC Connector Chart

KSC Connector	King Krimper Size
KSC-1	1.25mm
KSC-2	5.5mm, if using 1#18 use 2mm
KSC-3	8mm
KSC-4	14mm



Crimp KSC connectors using the ratcheting King Krimper tool (#46550).
(See page 25 for King Krimper)



Dry-Crimp Connectors

- Crimp style wire connector
- For use with solid and stranded wire
- Copper crimp with protective housing
- Protective housing contains dielectric silicone sealant to protect and waterproof splice
- Holes in connector housing seal around wire to protect silicone from escaping and continuously encapsulate splice
- Two crimp sizes available to cover a wire range from #18 - #10 AWG
- Item sold with both filled and unfilled housing
- Silicone sealant also available sold separately
- Manufacturer approved for direct bury
- Quick, secure connections
- Allows installer to test connection prior to waterproofing splice
- For use in irrigation systems and low voltage lighting applications



Pre-Filled



Non-Filled
Silicone sealant sold separately

SKU# 20240 Dry-Crimp Non-Filled Connectors- Bag of 25 Splices
(contents include 25 non-filled housings, 25 small and 25 large copper crimps)
SKU# 20245 Dry-Crimp Filled Connectors- Bag of 25 Splices
(contents include 25 pre-filled housings, 25 small and 25 large copper crimps)
SKU# 20248 Silicone Sealant- 1- 5.3oz Tube
SKU# 20249 Replacement Crimp Sleeves- Bag of 25
(contents include 25 small and 25 large copper crimps)

MADE IN USA OF US AND FOREIGN PARTS

DRYCONN®
WATERPROOF CONNECTORS

Gray/Gray

- UL Listed 600V for dry, wet or above/below grade applications when used in an enclosure
- For use in Direct Bury applications when operating at 30V or less
- For use with solid and stranded wire
- Waterproof and corrosion proof
- Pre-filled with dielectric silicone sealant that never hardens
- One-step installation saves time and money
- No pre-twisting required



Min #22/Max #12



SKU# 10111 Gray/Gray- Bag of 20

DRYCONN®
WATERPROOF CONNECTORS

DB Power Connect
Direct Bury Power Connector

- Designed for use in direct bury line voltage applications or in irrigation systems
- For use with solid and stranded wire
- Pre-filled with a non-toxic SmartGel®
- Waterproof and corrosion proof
- For use in outdoor or direct burial locations
- UV and impact resistant
- Eliminates the need for heat shrinks, primers, tapes, resins, and epoxy packs
- Rated up to 600V



Min #14/Max #4

SKU# 98105 DB Power Connect- Bag of 3

ACE
CONNECTOR™

Low Voltage Landscape Lighting Fitting

- Solid brass lug
- For use with solid and stranded wire
- Fast curing heat shrink with adhesive lining
- Weather resistant to withstand outdoor elements
- For use in low voltage landscape lighting and direct bury applications
- Set screw thread pitch allows tighter securing of wires



Small ACE*
Min #18/Max #12



Medium ACE*
Min #18/Max #8



Large ACE
Min #18/Max #8

*UL1838 Compliant
All trademarks, U.S. and Foreign apply. All rights reserved.

SKU# 90320 Small ACE Connector*- Box of 50
SKU# 90325 Small ACE Connector*- Bag of 2
SKU# 90330 Medium ACE Connector*- Box of 50
SKU# 90335 Medium ACE Connector*- Bag of 2
SKU# 90340 Large ACE Connector- Box of 50
SKU# 90345 Large ACE Connector- Bag of 2

BLAZING
SnapLOC

SnapLoc™ Wire Connectors
Waterproof Wire Connectors

- For use in irrigation (BVS) and landscape lighting (BLS) applications
- For use with solid and stranded wire
- No tools required
- Silicone filled connector
- Safe, fast and reliable
- Strong wire restraint
- BVS1: Max 30V
- BVS2: Max 300V
- BLS10: Max 15V, 10AMPS



Large Hole:
Min #14/Max #12

Small Hole:
Min #20/Max #16



BVS1

#18 (Sol/Str)



BLS10

2#12 w/1#18 (Str)

U.S. Pat. 7,335,050

Blazing Valve Splice (BVS)

SKU# BVS1 Clear & Blue- Package of 25
SKU# BVS2 Clear & Yellow- Package of 20

Blazing Lighting Splice (BLS)

SKU# BLS10 Brown- Package of 10

LV9000 & LV9500

Wire Connectors
Waterproof Wire Connectors

- For use in irrigation systems, low voltage lighting, security systems and telephone wire splices
- For use with solid and stranded wire
- For use in boats, recreational vehicles and heavy construction equipment
- Silicone filled, snap-locking connector
- Not for high-voltage connections (Max 30V, 10AMPS)



LV9000
Min #24/Max #18



LV9500
Min #18/Max #10

Low Voltage Series (LV)

SKU# LV9000 Yellow- Package of 24
SKU# LV9500 Black- Package of 12

BLAZING
TwiztLOC

TwiztLoc™ Wire Connectors

- Silicone filled connector
- For use with solid and stranded wire
- For use in irrigation and landscape lighting applications
- For low voltage applications (30V Max, 10 Amps)



TLC10
Min #20/Max #14 (Str)
#18 (Sol)



TLC20
Min #18/Max #12

TwiztLoc Connector (TLC)

SKU# TLC10 Blue/Yellow- Package of 200
SKU# TLC10-25 Blue/Yellow- Package of 25
SKU# TLC20 Gray/Yellow- Package of 100
SKU# TLC20-15 Gray/Yellow- Package of 15

DRYCONN®
WATERPROOF CONNECTORS
Blue/Blue

- UL Listed 600V for dry, wet or above/below grade applications when used in an enclosure
- For use in Direct Bury applications when operating at 30V or less
- For use with solid and stranded wire
- Waterproof and corrosion proof
- One-step® installation saves time and money
- No pre-twisting required
- Pre-filled with dielectric silicone sealant that never hardens

SKU# 10222 Blue/Blue Low Voltage- Bag of 20
SKU# 10241 Blue/Blue Low Voltage- Canister of 100



Min #22/Max #12



DRYCONN®
WATERPROOF CONNECTORS
Tan Low Voltage

- Waterproof and corrosion proof
- Pre-filled with dielectric petroleum sealant that never hardens
- Suitable for low voltage applications including irrigation systems
- For use with solid and stranded wire
- One-step installation saves time and money
- No pre-twisting required
- Eliminates the need for multi-step products
- For low voltage applications (30V Max, 10 Amps)

SKU# 20101 Tan Low Voltage- Card of 4
SKU# 20111 Tan Low Voltage- Bag of 15
SKU# 20122 Tan Low Voltage- Bag of 50
SKU# 20136 Tan Low Voltage- Canister of 50



Min #22/Max #6



DRYCONN®
WATERPROOF CONNECTORS
316 IR+

- No need to strip wires
- For use with solid and stranded wire
- Pre-filled with dielectric silicone sealant that never hardens
- Max Voltage: 600V
- Manufacturer approved for low voltage (30V) wet, damp and direct bury applications
- UV and impact resistant

SKU# 98230 316 IR+- Bag of 30



Min #22/Max #14



U.S. Patent Number 9,496,626. All other trademarks, U.S. and Foreign Patents Pending apply. All Rights Reserved.

DRYCONN®
WATERPROOF CONNECTORS
Direct Bury GTSR

- Grease Filled Tube with Strain Relief**
- Pre-filled with petroleum grease that never hardens
 - For use with solid and stranded wire
 - Waterproof and corrosion proof
 - Easy-latch lid provides strain relief
 - Includes orange or yellow nut for wire splicing
 - Manufacturer approved for direct bury
 - Perfect for low voltage applications up to 50V

SKU# 20205 GTSR w/Orange Nut- Bag of 25
SKU# 20210 GTSR w/Yellow Nut- Bag of 25



Orange Nut Min #22/Max #14
Yellow Nut Min #18/Max #10

MADE IN USA OF US AND FOREIGN PARTS

KING DRAINS®
Soft Grip Drain

- Ergonomic soft grip design makes for comfortable, slip-free installation
- Complements end-of-season blow-outs to remove residual water from irrigation systems and provide freeze protection
- Utilized for both main and lateral line applications
- Backflow check prevents contamination
- Broad dispersing pad protects against root and soil penetration
- Self-cleaning dirt arrester screen prevents clogging of drain
- Pressure sensitive valve releases water slowly at root level

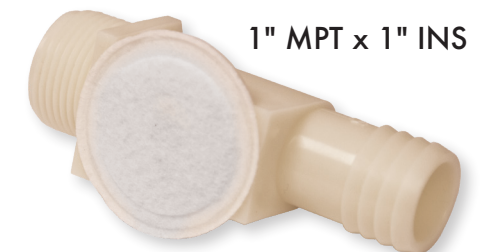


U.S. Patent Numbers 6,886,585 and D568,450. All Rights Reserved.

SKU# 22163 1/2" MPT- Bag of 25
SKU# 23167 3/4" MPT- Bag of 25

KING DRAINS®
End of Line Drain

- Designed for 3/4" or 1" poly pipe
- Complements end-of-season blow-outs to remove residual water from irrigation systems and provide freeze protection
- Pressure sensitive valve releases water slowly at root level
- Self-cleaning dirt arrester screen prevents clogging of drain



1" MPT x 1" INS



3/4" x 1/2" FPT

1" x 1/2" FPT

1" x 3/4" FPT

SKU# 15140 3/4" x 1/2" FPT- Bag of 10
SKU# 16142 1" x 1/2" FPT- Bag of 10
SKU# 17145 1" x 3/4" FPT- Bag of 10
SKU# 21155 1" MPT x 1" INS- Bag of 5

MADE IN USA OF US AND FOREIGN PARTS

U.S. Pat. 6,886,585 and D568,450. All Rights Reserved.

SnapTap[®] PRO

- Tap is threaded to handle 90° Elbow, Straight Barb, or appropriate sprinkler heads
- Ergonomic hurricane handle to cushion fingers and provide maximum comfort
- Superior strength patented "cutting tip" cleanly cuts polyethylene pipe for a tight seal every time
- Push-on saddle for the fastest installation possible

SKU# 22710 1" Saddle w/ 1/2" FPT Tap- Bag of 25
 SKU# 22715 1" Saddle w/ 1/2" 90° Elbow- Bag of 25
 SKU# 22720 1" Saddle w/ 1/2" Straight Barb- Bag of 25

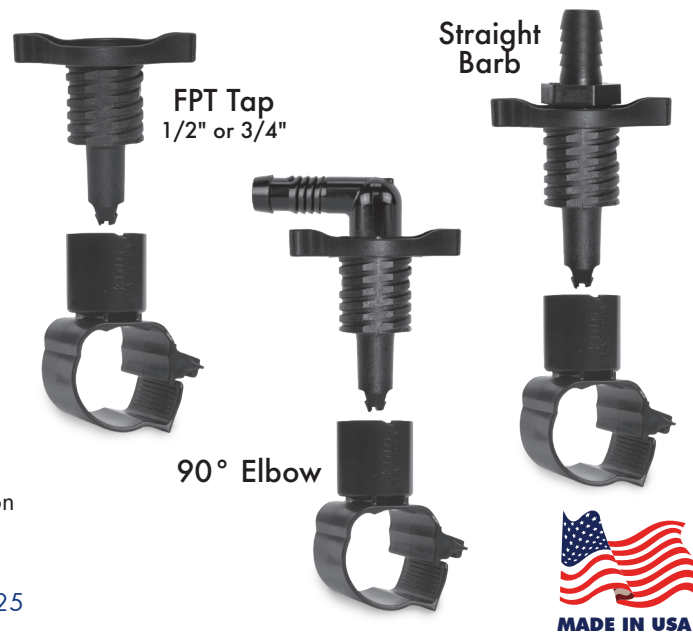


U.S. Pat. 6,510,865. All other trademarks, U.S. and Foreign Patents Pending apply. All Rights Reserved.

SnapTap[®] SADDLES

- Ergonomic handle with 50% more surface area to cushion fingers and provide maximum comfort
- #1 in comfort and durability
- No tools, fittings, or clamps needed
- Ergonomic hurricane handle provides comfortable, quick rotations
- Short thread design allows for the quickest, easiest installation possible without dirt or pebble clogging
- Patented cutting tip cleanly cuts polyethylene pipe for a tight seal every time
- Side snap latch provides a visible, secure connection
- Shorter working height requires less digging
- For both 80# and 100# 1" Poly Pipe

SKU# 22310 1" Saddle w/ 1/2" FPT Tap- Bag of 25
 SKU# 22315 1" Saddle w/90° Elbow- Bag of 25
 SKU# 22320 1" Saddle w/Straight Barb- Bag of 25
 SKU# 22330 1" Saddle w/ 3/4" FPT Tap- Bag of 25



U.S. Pat. 6,510,865 and 6,767,033. All other trademarks, U.S. and Foreign Patents Pending apply. All Rights Reserved.

UNIVERSAL! SnapTap[®] SADDLES

- Ergonomic handle with 50% more surface area to cushion fingers and provide maximum comfort
- Universal adjustable latch provides a visible, secure connection
- Fits 3/4", 1" and 1 1/4" Poly (PE) Pipe
- Installation requires no fittings, no clamps
- Patented cutting tip cleanly penetrates for a tight seal every time

SKU# 22510 1/2" FPT Tap- Bag of 25
 SKU# 22515 w/90° Elbow- Bag of 25
 SKU# 22520 w/Straight Barb- Bag of 25



U.S. Pat. 6,510,865. All other trademarks, U.S. and Foreign Patents Pending apply. All Rights Reserved.

BLAZING SADDLES™

Saddles for Polyethylene Pipe

- The fastest self-tapping saddle
- For use on 3/4" to 1 1/2" Poly and metric equivalents
- No clamping, coring, or cutting required
- Optimal sprinkler head flow, delivers more than 7 gallons per minute at 40 PSI and 12 Gallons Per Minute at 60 PSI
- Barbed fitting is a secure fit and easy installation without tools
- Made of high impact ABS

■ ■ ■ = Tap Color

U.S. Pat. 6,216,723, 6,357,472, 6,773,036, and other patents pending.



- 3/4" Polyethylene**
- SKU# BS4000 Swing Pipe Barb- Bag of 25
 - SKU# BS5000 1/2" FPT- Bag of 25
 - SKU# BS6000 3/4" FPT- Bag of 25
 - SKU# BS5500 Swing Pipe Barb L- Bag of 25
 - SKU# BS5999 17mm Drip Barb- Bag of 25
- 1" Polyethylene**
- SKU# BS7000 1/2" FPT- Bag of 25
 - SKU# BS8000 3/4" FPT- Bag of 25
 - SKU# BS9000 Swing Pipe Barb- Bag of 25
 - SKU# BS7500 Swing Pipe Barb L- Bag of 25
 - SKU# BS9999 17mm Drip Barb- Bag of 25
- 1 1/4" Polyethylene**
- SKU# BS12500 1/2" FPT- Bag of 25
 - SKU# BS12750 3/4" FPT- Bag of 25
 - SKU# BS12900 Swing Pipe Barb- Bag of 25
- 1 1/2" Polyethylene**
- SKU# BS15500 1/2" FPT- Bag of 10
 - SKU# BS15750 3/4" FPT- Bag of 10
 - SKU# BS15900 Swing Pipe Barb- Bag of 10
- 25mm Metric Polyethylene**
- SKU# BS2550 1/2" FPT- Bag of 25
 - SKU# BS2575 3/4" FPT- Bag of 25
 - SKU# BS2590 Swing Pipe Barb- Bag of 25
- 32mm Metric Polyethylene**
- SKU# BS3350 1/2" FPT- Bag of 25
 - SKU# BS3375 3/4" FPT- Bag of 25
 - SKU# BS3390 Swing Pipe Barb- Bag of 25

BLAZING SADDLES™

Saddles for PVC Pipe

- The fastest self-tapping saddle
- For use on 3/4" to 1 1/4" Class PVC pipe
- No clamping, coring, or cutting required
- Optimal sprinkler head flow, delivers more than 7 gallons per minute at 40 PSI and 12 Gallons Per Minute at 60 PSI
- Barbed fitting is a secure fit and easy installation without tools
- Made of high impact ABS

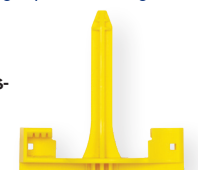
■ ■ ■ = Tap Color

U.S. Pat. 6,216,723, 6,357,472, 6,773,036, and other patents pending.



- 3/4" PVC**
- SKU# BS4PVC Swing Pipe Barb- Bag of 25
 - SKU# BS5PVC 1/2" FPT- Bag of 25
 - SKU# BS6PVC 3/4" FPT- Bag of 25
 - SKU# BS55PVC Swing Pipe Barb L- Bag of 25
 - SKU# BS59PVD 17mm Drip Barb- Bag of 25
- 1" PVC**
- SKU# BS7PVC 1/2" FPT- Bag of 25
 - SKU# BS8PVC 3/4" FPT- Bag of 25
 - SKU# BS9PVC Swing Pipe Barb- Bag of 25
 - SKU# BS75PVC Swing Pipe Barb L- Bag of 25
 - SKU# BS99PVD 17mm Drip Barb- Bag of 25
- 1 1/4" PVC**
- SKU# BS1250P 1/2" FPT- Bag of 25
 - SKU# BS1275P 3/4" FPT- Bag of 25
 - SKU# BS1290P Swing Pipe Barb- Bag of 25

Spike Tool included in Poly and PVC bags- where applicable

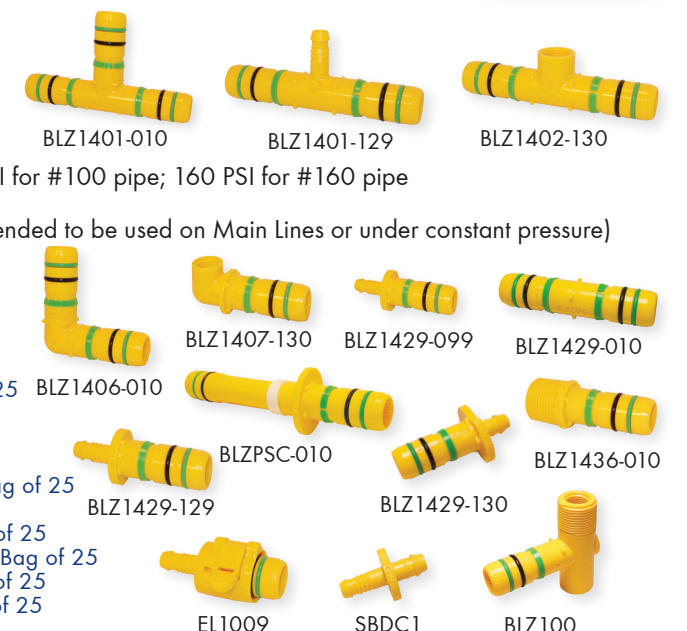


BLAZING FAST FITTINGS™

No tools, clamps or extra fittings.

- Max Operating Pressure: 80 PSI for #80 pipe; 100 PSI for #100 pipe; 160 PSI for #160 pipe
- Suggested Operating Pressure: 10-80 PSI
- Burst Pressure: Exceeds 450 PSI (This product is not intended to be used on Main Lines or under constant pressure)
- Body Material: ABS
- O-Ring Material: EPDM
- Flow Rates are comparable to traditional insert fittings
- Friction Loss is comparable to traditional insert fittings

- SKU# BLZ1401-010 1" x 1" x 1" Insert Tee- Bag of 25
 SKU# BLZ1401-129 1" x 1" x Swing Pipe Barb Tee- Bag of 25
 SKU# BLZ1402-130 1" x 1" x 1/2" FPT Tee- Bag of 25
 SKU# BLZ1406-010 1" x 1" Insert Elbow- Bag of 25
 SKU# BLZ1407-130 1" x 1/2" FPT Insert Elbow- Bag of 25
 SKU# BLZ1429-099 3/4" x Swing Pipe Barb End of Line- Bag of 25
 SKU# BLZ1429-010 1" x 1" Insert Coupler- Bag of 25
 SKU# BLZ1429-129 1" x Swing Pipe Barb End of Line- Bag of 25
 SKU# BLZ1429-130 1" Poly Insert x 17mm Drip Pipe Fitting- Bag of 25
 SKU# BLZ1436-010 1" x 1" MPT Insert Male Adapter- Bag of 25
 SKU# BLZPSC-010 1" x 1" Insert Poly Stretch Coupler- Bag of 25
 SKU# EL1009 1" x Swing Pipe Barb End of Line- Bag of 25
 SKU# BLZ100 1" x Many Insert Fitting- Bag of 25
 SKU# SBDC1 Spiral Barb x 17mm Drip Coupling- Bag of 25



U.S. Pat. 8,662,541, 9,297,486, 9,593,789, D709,994, 8,596,691, 8,172,276. All other trademarks, U.S. and Foreign Patents Pending apply. All Rights Reserved.



Siphon King® Utility Pumps

- Made in USA
- Corrosion proof
- Provides quick removal of water
- Self-priming, lightweight utility pump
- High strength, ergonomic handle can withstand extreme temperatures and harsh usage
- 36" pump provides quick removal of 1 gallon in 4 strokes
- 24" extension available; fits on to existing pump to access hard to reach areas
- Steel shaft improves strength
- Flexible discharge hose for directing water evacuation
- Removable intake foot for easy cleaning
- Perfect for removing water from valve boxes, meter pits, pipe trenches, and anywhere water accumulates



Siphon King Display Rack

(See page 37 for details)

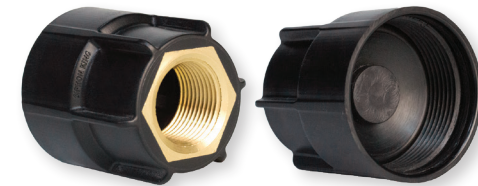
- SKU# 48024 24" Pump x 36" Hose- Quantity 1
- SKU# 48036 36" Pump x 36" Hose- Quantity 1
- SKU# 48072 36" Pump x 72" Hose- Quantity 1
- SKU# 48230 24" Pump Extension- Quantity 1



U.S. Pat. 7726,231. All other trademarks, U.S. and Foreign Patents Pending apply. All Rights Reserved.

Siphon King Gas Pit Pump Adaptor

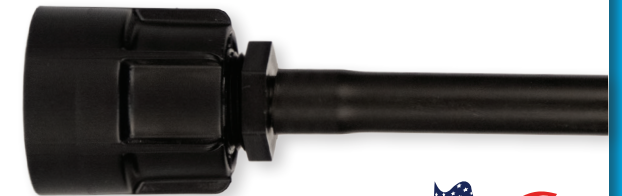
- Connects directly to the drip pot to remove standing water in low pressure gas systems
- Has a 3/4" NPT metal thread insert that will not strip away, even with repeated use



SKU# 48210 Gas Pit Pump Adaptor- Bag of 1

Siphon King Syringe Sucker

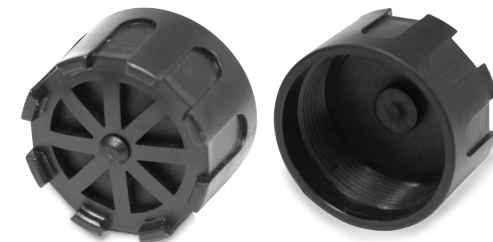
- For use in small spaces, including golf valve bodies, meter pits, narrow trenches, etc.
- 3/4" barb fitting with 12" pipe attachment
- Replace 12" pipe with any length funny pipe for maximum flexibility and reach



SKU# 48215 Syringe Sucker- Card of 1

Siphon King Pump Assembly Foot

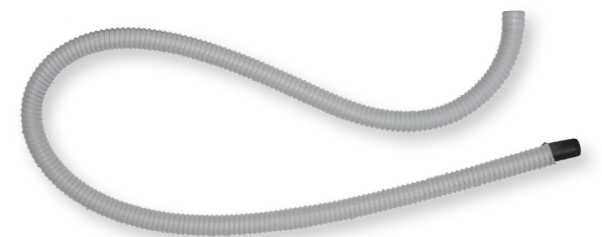
- Screws on easily
- Works with all Siphon King Utility Pumps



SKU# 48205 Pump Assembly Foot- Bag of 1

Siphon King 72" Extension/Replacement Hose with Coupler

- 72" flexible hose directs water away from work site
- Coupler provides extension to existing pump hose



SKU# 48272 72" Extension/Replacement Hose- Bag of 1

MADE IN USA OF US AND FOREIGN PARTS

Siphon King Jr.

- Intake and discharge transfer system
- May be used to transfer liquids, remove water, change oil, siphon gas, or inflate small objects
- Complete with two 50" siphon hoses, a dipstick tube, and an air pressure hose



SKU# 48050 Siphon King Jr. with 50" Hose- Pkg of 1



- Heavy duty PVC
- UV resistant
- Max gallons: 15
- Max tree size: 1" - 4" diameter
- Max tree size can be doubled by zipping two Sapling Soaker bags together
- 5-9 hours of drip time
- Slow release emitters for even water distribution

SKU# 44020 Sapling Soaker- Bag of 1



Built in emitters for even water distribution (image not to scale)

Patents Pending and all other trademarks, U.S. and Foreign Patents apply. All Rights Reserved.



- Heavy duty polyethylene
- UV resistant
- Max gallons: 20
- Max tree size: 6" diameter
- Heavy duty Velcro strap secures Sapling Soaker in high winds preventing blow away
- 5-8 hours of drip time
- 1/4 turn cap for quick fill
- Slow release emitters for even water distribution

SKU# 44010 Sapling Soaker Ring- Bag of 1



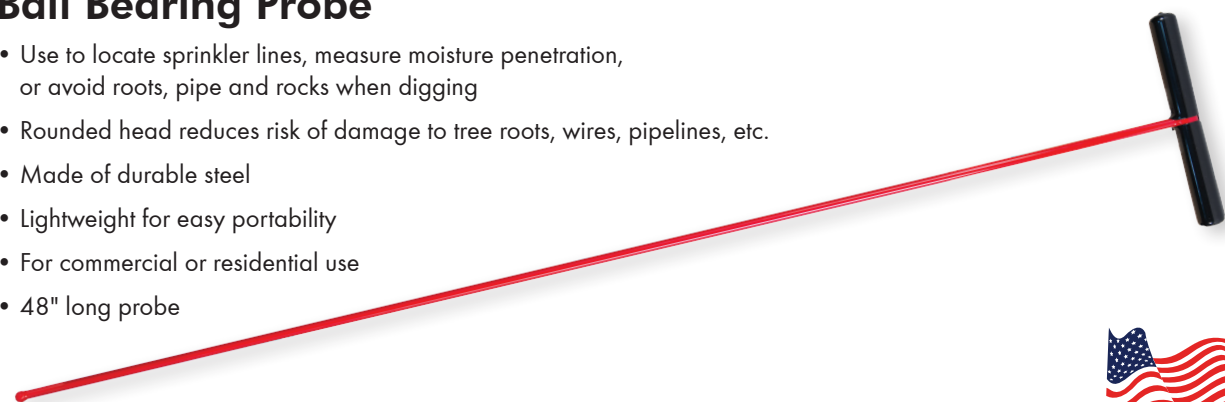
Built in emitters for even water distribution (image not to scale)

U.S. Pat. 9,468,165. All other trademarks, U.S. and Foreign Patents Pending apply. All Rights Reserved.

Ball Bearing Probe

- Use to locate sprinkler lines, measure moisture penetration, or avoid roots, pipe and rocks when digging
- Rounded head reduces risk of damage to tree roots, wires, pipelines, etc.
- Made of durable steel
- Lightweight for easy portability
- For commercial or residential use
- 48" long probe

SKU# 25210 Ball Bearing Probe- Unit of 1



LEAK-B-GONE™

PVC LEAK STOPPER RING

- 60 second solution to repair leaking PVC joints
- Available in seven sizes, for 3/4", 1", 1 1/4", 1 1/2", 2", 3", and 4" PVC pipe
- Easy installation, no tools required
- Provides 360° leak protection, tested to 200 PSI
- For commercial and residential use

- SKU# 45015 3/4" Rings- Bag of 10
- SKU# 45020 1" Rings- Bag of 10
- SKU# 45025 1 1/4" Rings- Bag of 10
- SKU# 45030 1 1/2" Rings- Bag of 10
- SKU# 45035 2" Rings- Bag of 10
- SKU# 45040 3" Rings- Bag of 10
- SKU# 45045 4" Rings- Bag of 10
- SKU# 45050 Assorted 3/4", 1", 1 1/4" & 1 1/2" Rings Bag of 4
- SKU# 45055 Assorted 2", 3" & 4" Rings Bag of 3

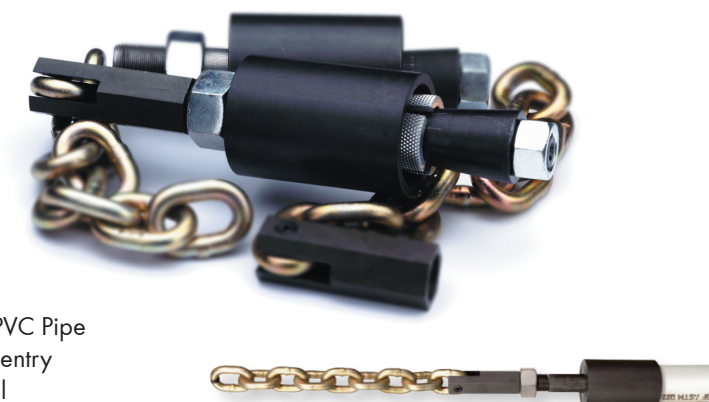


U.S. Pat. 8,371,622, 8,579,296, 8,608,179 and all other trademarks, U.S. and Foreign Patents apply. All Rights Reserved.

KING GRIPS

- Quick coupling and release saves time
- No steel splinters
- Fits all pipe pulling equipment
- Plated for rust prevention
- No tape required
- Available in a convenient kit
- For 3/4" to 2" Polyethylene Pipe and 3/4" to 4" PVC Pipe
- Durable, closed-end design protects pipe from soil entry
- Minimum pipe grip eliminates wasted pipe material

- SKU# 81701 1" 2" Diameter Bullet with 1" to 1 1/2" Shaft, 1" Grip Only- QTY 1
 - SKU# 81315 1" Chain with Male and Female Adapter 3/4" Hex Stock- QTY 1
 - SKU# 81314 Female Adapter 3/4" Hex Stock- QTY 1
 - SKU# 81311 1" Heavy Duty Chain with ML and FML Adapter 1" Hex Stock- QTY 1
 - SKU# 81801 1" PVC Kit Grip and Chain- QTY 1
 - SKU# 81802 1" 80# Poly Kit Grip and Chain- QTY 1
 - SKU# 81803 1" 100# Poly Kit Grip and Chain- QTY 1
 - SKU# QA5562 10" Set Wrench, Extends life of grips- QTY 1
- See price list for a complete list of SKU's



Mesh Grips

- For pulling irrigation PVC and Poly Pipe, directional boring pull backs, insulated wire, wire rope, tubing, and bare conductors
- Reusable
- Available with swivels built into grip
- Coated galvanized cable
- Reverse weave and single wire bail
- Work load capacity of 1,500 to 3,500 lbs
- Various grip lengths, pipe ranges, and weaves available

See price list for a complete list of SKU's



DRYCONN®

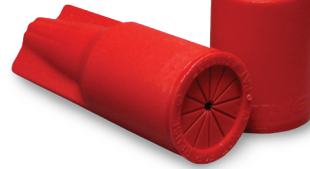
WATERPROOF CONNECTORS

Direct Bury

- UL Listed 600V for dry, wet or above/below grade applications when used in an enclosure
- For use in Direct Bury applications when operating at 30V or less
- For use with solid and stranded wire
- Pre-filled with dielectric silicone sealant that never hardens
- Waterproof and corrosion-proof
- One-step® installation saves time and money
- No pre-twisting required

SKU# 10444 King 4 Yellow- Bag of 10
 SKU# 10555 King 5 Red- Bag of 10
 SKU# 10600 King 6 Blue- Card of 2
 SKU# 10666 King 6 Blue- Bag of 10
 SKU# 10670 King 6 Blue- Box of 100
 SKU# 10990 King 9 Dark Blue- Card of 2
 SKU# 10999 King 9 Dark Blue- Bag of 8
 SKU# 10975 King 9 Dark Blue- Box of 75

King 5 Red
Min #14/Max #10



King 4 Yellow
Min #18/Max #12



King 6 Blue
Min #22/Max #8



King 9 Dark Blue
Min #14/Max #6



GB Gardner Bender

WireGard™

- Designed for conventional copper/copper dry splices
- For use with solid and stranded wire (except PushGard- solid wire only)
- Available in nut, wing and push-in style
- Industry color coded
- Suitable for wire combinations from #22 - #10
- Nut and wing style connectors feature a zinc plated spring and a flame retardant housing
- Push-in style connectors feature a continuity test point for easy voltage checks
- Perfect for indoor, dry applications for both commercial and residential installation/repairs

SKU# 10-003HT WireGard High Temp Black Nut- Box of 100
 SKU# 10-001 WireGard Gray Nut- Box of 100
 SKU# 14-001 WireGard Gray Nut- Bag of 1,000
 SKU# 10-002 WireGard Blue Nut- Box of 100
 SKU# 14-002 WireGard Blue Nut- Bag of 1,000
 SKU# 25-003 WireGard Orange Nut- Bag of 25
 SKU# 17-003 WireGard Orange Nut- Bag of 50
 SKU# 10-003 WireGard Orange Nut- Box of 100
 SKU# 13-003 WireGard Orange Nut- Bag of 500
 SKU# 25-004 WireGard Yellow Nut- Bag of 25
 SKU# 17-004 WireGard Yellow Nut- Bag of 50
 SKU# 10-004 WireGard Yellow Nut- Box of 100
 SKU# 13-004 WireGard Yellow Nut- Bag of 500
 SKU# 10-006 WireGard Red Nut- Box of 100
 SKU# 13-006 WireGard Red Nut- Bag of 250



WingGard Ultra™

SKU# 17-084 WingGard Ultra Yellow Wing- Bag of 50
 SKU# 10-084 WingGard Ultra Yellow Wing- Box of 100
 SKU# 13-084 WingGard Ultra Yellow Wing- Bag of 500
 SKU# 12-084BU WingGard Ultra Yellow Wing- Barrel of 42,000
 SKU# 17-086 WingGard Ultra Red Wing- Bag of 50
 SKU# 10-086 WingGard Ultra Red Wing- Box of 100
 SKU# 13-086 WingGard Ultra Red Wing- Bag of 500
 SKU# 12-086BU WingGard Ultra Red Wing- Barrel of 22,500
 SKU# 10-089 WingGard Ultra Blue Wing- Box of 50
 SKU# 13-089 WingGard Ultra Blue Wing- Bag of 100



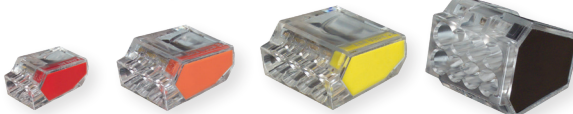
GreenGard™

SKU# 25-095 GreenGard Green Wing- Bag of 25
 SKU# 13-095 GreenGard Green Wing- Box of 500



Hex-Lok Ultra®

SKU# 10-1H1 Hex-Lok Ultra Tan Wing- Box of 100
 SKU# 13-1H1 Hex-Lok Ultra Tan Wing- Bag of 500
 SKU# 12-1H1BU Hex-Lok Ultra Tan Wing- Barrel of 28,000



PushGard™

SKU# 10-PC2 PushGard Yellow Push-In- Jar of 100
 SKU# 10-PC3 PushGard Orange Push-In- Jar of 100
 SKU# 10-PC4 PushGard Yellow Push-In- Jar of 100
 SKU# 10-PC8 PushGard Black Push-In- Jar of 50



TreeLight Mount™

Great for creating a downlight effect in trees

- Mount most landscape lighting fixture brands to trees for a downlight effect
- Landscape lighting fixture attaches to a 1/2" NPT threaded female fitting
- Internal 5/16" hex head allows for fast installation with drill and nut driver bit
- 100% stainless steel with bronze powder coat finish
- 3.5" stand-off bolt accommodates for many years of tree growth
- Eco-friendly design will not damage trees
- Lasts as long as the LED light you are installing
- No yearly maintenance
- Mono (single point) installation makes the TreeLight less likely to infect a tree
- Pass through slot accommodates prewired fixtures

SKU# 25110 TreeLight Mount - Bag of 1



U.S. Pat. 8,967,564 B2. All Rights Reserved.
 (See page 39 for merchandise display)

Works Great With:

Small KSC Connector



See page 7 for product details

Small ACE Connector



See page 8 for product details

Splice Butt Heat Shrink



See page 33 for product details



Insta-Light®

Battery pack for low voltage landscape lighting demos

- Thread fixture stake onto base for uplighting, or use extension coupler for downlighting demos
- Use with LED Light fixtures
- Lightweight, portable construction
- Quickly set up temporary party/ event lighting
- Effortlessly demo low voltage (12VDC) LED light fixtures
- Lock in more sales with leave-behind nighttime demonstrations

SKU# 75500 Insta-Light - Bag of 1



Uplighting



Downlighting



DRYCONN® WATERPROOF CONNECTORS

IDC Connectors (Insulation Displacement Connectors)

- No need to strip wires
- For use with solid/stranded wire and steel core/copper clad steel
- Waterproof and corrosion proof
- Install service line without cutting the main line
- Manufacturer approved for direct bury
- Designed for low voltage tracer splices and cathodic applications up to 50V

SKU# 98305 IDC Yellow- Bag of 5
SKU# 98405 IDC Aqua- Bag of 5

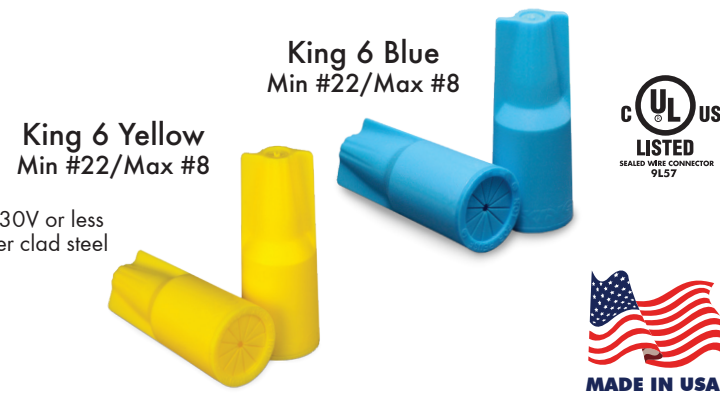


DRYCONN® WATERPROOF CONNECTORS

King 6 Connectors

- UL Listed 600V for dry, wet or above/below grade applications when used in an enclosure
- For use in Direct Bury applications when operating at 30V or less
- For use with solid/stranded wire and steel core/copper clad steel
- Temperature Rating: 105°C (221°F)
- Silicone Sealant: -45°F to 400°F
- Designed for tracer splices and cathodic applications

SKU# 10666 King 6 Blue- Bag of 10
SKU# 31556 King 6 Yellow- Bag of 10

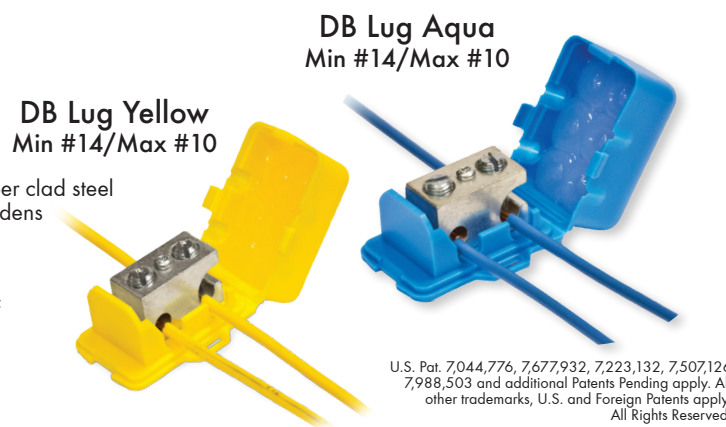


DRYCONN® WATERPROOF CONNECTORS

Direct Bury Lugs

- Waterproof and corrosion proof
- For use with solid/stranded wire and steel core/copper clad steel
- Pre-filled with dielectric silicone sealant that never hardens
- Install service line without cutting the main line
- Installs in one minute or less
- Manufacturer approved for direct bury
- Silicone Sealant Temperature Rating: -45°F to 400°F
- Designed for low voltage tracer splices and cathodic applications up to 50V

SKU# 90120 DB Lug Yellow- Bag of 5
SKU# 90220 DB Lug Aqua- Bag of 5



DRYCONN® WATERPROOF CONNECTORS

Direct Bury Lugs Plus

- #14-8 Solid Copper
- #14-6 Stranded Copper
- #14-10 Steel Core Tracer Wire (CCS)

- Waterproof and corrosion proof
- For use with solid/stranded wire and steel core/copper clad steel
- Install service line without cutting the main line
- One piece for easy installation
- Installs in one minute or less
- Designed for use with solid tracer and cathodic wires
- High impact housing with user friendly design to prevent cuts or handling discomfort
- Use with low voltage tracer and cathodic lines under 50 volts
- Pre-filled with silicone
- Approved for direct bury

SKU# 90740 DB Lug Plus (Yellow)- Bag of 5
SKU# 90750 DB Lug Plus (Aqua)- Bag of 5

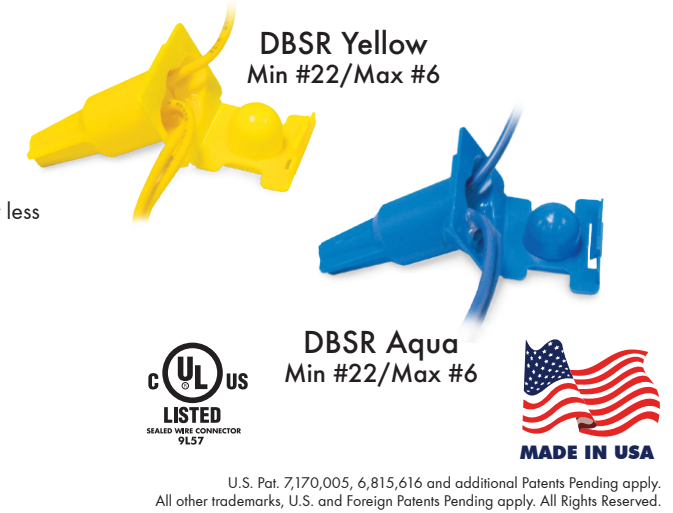


DRYCONN® WATERPROOF CONNECTORS

DBSR® Direct Bury with Strain Relief

- UL Listed 600V for dry, wet or above/below grade applications when used in an enclosure
- For use in Direct Bury applications when operating at 30V or less
- For use with solid and stranded wire
- Pre-filled with dielectric silicone sealant that never hardens
- Waterproof and corrosion proof
- Easy latch lid provides strain relief
- One piece for easy installation
- Silicone Sealant Temperature: -45°F to 400°F
- Designed for tracer splices and cathodic applications

SKU# 63315 DBSR Yellow- Bag of 10
SKU# 63350 DBSR Yellow- Box of 100
SKU# 63615 DBSR Aqua- Bag of 10
SKU# 63650 DBSR Aqua- Box of 100



DRYCONN® WATERPROOF CONNECTORS

Split Bolt Housing

- Designed for low voltage tracer splices and cathodic applications up to 50V
- For use with solid/stranded wire and steel core/copper clad steel
- Use for making tap or branch splices
- Pre-filled with a non-toxic SmartGel® that eliminates hazmat requirements
- Waterproof and corrosion proof
- Eliminates the need for heat shrinks, primers, tapes and epoxy packs
- One piece for fast, easy installation
- Installs in one minute or less
- For use in outdoor or direct-burial locations
- Wire Range: #14 - #10 AWG

SKU# 69205 Split Bolt Housing Yellow- Bag of 10
SKU# 69105 Split Bolt Housing Aqua- Bag of 10



DRYCONN® WATERPROOF CONNECTORS

HSC Connectors Heat Shrink Crimp

- Great for well pump connections
- For use with solid and stranded wire
- Transparent heat shrink allows for visible splice examination
- Crimp connector is UL Listed
- Manufacturer approved for direct bury
- Connectors span a wire range between #14 - #4 AWG

SKU# 71010 HSC1- 14g - 10g Bag of 4 contains: four (4) 14g - 10g crimps and 4 small sleeves
SKU# 71020 HSC2- 8g - 12g Bag of 4 contains: one (1) 14g - 10g crimp, three (3) 8g crimps and 4 small sleeves
SKU# 71030 HSC3- 6g - 8g Bag of 4 contains: one (1) 8g crimp, three (3) 6g crimps, 1 small sleeve and 3 large sleeves
SKU# 71040 HSC4- 4g - 8g Bag of 4 contains: one (1) 8g crimp, three (3) 4g crimps, 1 small sleeve and 3 large sleeves

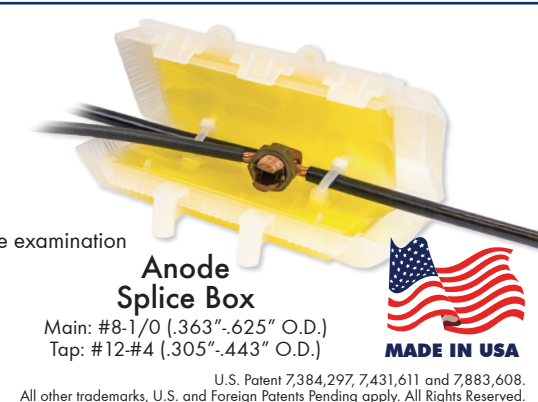


DRYCONN® WATERPROOF CONNECTIONS

VisiLock® with SmartGel®

- Designed to protect cathodic splices from corrosion
- For use with solid and stranded wire
- Waterproof and corrosion proof
- Re-enterable, semi-transparent, encapsulated splice allows for a visible splice examination
- Locking mechanism centers splice in box
- Pre-filled with a non-toxic gel that eliminates hazmat requirements
- One piece for fast, easy installation
- Eliminates heat shrinks, primers, tapes and epoxy packs
- For making tap or branch splices on insulated cables rated up to 100V

SKU# 98010 VisiLock- Box of 1



IrriMeter™

- Auto-ranging smart meter for irrigation applications
- Ohm / DCV / ACV
- Use to quickly and accurately troubleshoot irrigation systems
- Precision measurements for 100% confidence
- Easy one-switch operation and clear LCD display
- Convenient pocket sized meter

SKU# 42010 IrriMeter- Card of 1

Please see IrriMeter Product Manual inside package for a complete list of product specifications, product warnings, and instructions for use.

- Continuity Test
- AC Voltage Test
- Frequency Test
- Diode Test
- DC Voltage Test
- Resistance Test
- Duty Cycle Test



Alligator Clips

- Multi-purpose alligator clips for home, auto and irrigation applications.
- Use as replacements for meters and testers
- Fully insulated
- 22 - 16 AWG

SKU# 14-078 2" Alligator Clips- 2 per pack



Outlet Tester with Stud Finder

- Combined multi-scanner and electrical tester simplifies installation of irrigation controllers, pump controls, lighting transformers, etc.
- 3-selectable modes: stud scan, metal scan or AC Voltage
- Scans and locates wood or metal studs at a depth up to 0.75 inch
- Non-contact AC voltage detection (50-600V AC) to a maximum depth of 3.5 inch through drywall
- Integrated 3-wire wall outlet with GFCI test functionality
- Built-in metal tip for marking stud edge, pipe location or desired mounting point
- Over-molded rubber grips
- Audible and visual indication
- Operates from one 9 volt battery

SKU# PD6902 Outlet Test with Stud Finder- 1 per pkg



Low Voltage Tester

- Electrical tester for low voltage testing
- Checks voltages from 5-50 VAC/DC.
- Hi-impact ABS housing
- Hi-Vis 360° indication
- Tests AC/DC Voltage
- Convenient Pocket Clip
- Insulated alligator clips on end of test leads for convenience
- Use to troubleshoot irrigation and low voltage lighting systems

SKU# ET6200 Low Voltage Tester, 1 per pkg



Digital Multimeter

- Use to troubleshoot irrigation and low voltage lighting systems
- Withstands tough worksite applications - features impact resistant housing with protective over mold
- Auto-ranging capability
- Compact and lightweight
- DC Voltage: 200mV, 2V, 20V, 200V, 600V
- AC Voltage: 200mV, 2V, 20V, 200V, 500V
- Resistance: 200, 2K, 200K, 2M, 20M ohm
- 35" test leads included in package
- Operates from 2 AAA batteries

SKU# DM6250 Digital Multimeter- 1 per pack



Adjustable Non-Contact Volt Detector

- Adjustable non-contact sensitivity detects voltage from 12-1000V AC
- Troubleshoot irrigation systems without the need to strip wires
- The adjustable Volt Sensor allows for sensitivity adjustments in multiple-wire applications when precision and safety are crucial
- Audible and 360° visual indication
- Operates from single AAA battery
- Patented battery self-test feature
- Pocket Clip
- Soft grip, contoured design
- Frequency 50-60Hz

SKU# VD6505 Adjustable Non-Contact Volt Detector- 1 per pack



Digital Multimeter, 8 Function AC/DC

- Test lead input icons for correct lead placement
- Industry leading LCD display size
- Measures AC/DC voltage and current
- Impact resistant housing with protective rubber boot
- Internal overload safety fuse
- Operates from one 9 volt battery

SKU# DM6400 Digital Multimeter, 8 Function AC/DC- 1 per pack



Clamp Meter

- Precise True RMS Circuitry
- Integrated non-contact voltage detection
- Data hold capability to maintain reading on display
- Auto power off functionality to save battery life
- Designed and tested according to cETLus standards and is CAT 3 600V rated

SKU# DSA600TRMS Clamp Meter- 1 per pack



ToneProbe

Tone and Probe Wire Cable Tracing Kit

- Intuitive transmitter design for function and tone options
- Three unique audible tones for multiple wire traces
- Low battery indicator
- Auto-off saves battery use
- Heavy-duty alligator clips with multiple piercing options and reinforced strain reliefs

SKU# ET65220 ToneProbe- 1 per pack



Stop Shock II

- Single LED provides immediate indication of the wiring error, no need for a chart to carry, memorize or interpret!
- Advanced ground testing circuitry precisely detects the required low resistance values
- Hi-impact ABS housing withstands a 10ft drop and offers a 250 pound crush rating
- Bright 360 LED indicator light

SKU# HGT6520 Stop Shock II, 1 per pkg



Automatic Wire Stripper & Crimper

- Cut and strip 10-26 AWG copper or aluminum wire, solid or stranded
- Crimps 10-22 AWG insulated terminals and 4-22 AWG non-insulated terminals
- Crimp 7-8 mm ignition terminals
- Comfortable high-leverage handle design
- Automatic jaw-loaded wire stripper self-adjusts

SKU# GS-394 Automatic Wire Stripper & Crimper- Card of 1



Automatic Wire Stripper

- Strips wires clean with one easy squeeze, up to a full 7/8" Strips solid or stranded wire
- Blades cut insulation without nicking conductor. Jaws open automatically to remove wire without crushing ends
- AWG size clearly marked at each cutting hole
- Comfortable no-slip handles

SKU# SE-92 Automatic Wire Stripper- Card of 1



ArmorEdge Long Nose Wire Stripper

- Forged steel construction, induction hardened cutting blade
- Cuts mild steel, brass, copper, and aluminum wire
- Strips 8-20 AWG Solid, 10-22 AWG Stranded
- Straight and curved serrated jaws
- Crimps insulated and non-insulated connectors
- Bolt Cutting: 6-32, 8-32
- Ergonomic handle with easy-to-read laser-etched markings

SKU# GBP-61N ArmorEdge Wire Stripper- Card of 1



ArmorEdge Wire Stripper

- Stainless steel, hardened cutting blade
- Cuts mild steel, brass, copper, and aluminum wire
- Strips 10-18 AWG Solid, 12-20 AWG Stranded
- Bolt Cutting: 6-32, 8-32, 10-32
- Precision ground plier nose and wire looping holes
- Ergonomic handle with easy-to-read laser-etched markings
- Spring action return

SKU# GESP-55 ArmorEdge Wire Stripper- Card of 1



ArmorEdge Wire Stripper

- Stainless steel, hardened cutting blade
- Cuts mild steel, brass, copper, and aluminum wire
- Strips 8-20 AWG Solid, 10-22 AWG Stranded
- Crimps 10-22 AWG insulated and non-insulated terminals, coaxial connectors
- Bolt Cutting: 4-40, 5-40, 6-32, 8-32, 10-24, 10-32
- Precision ground plier nose and wire looping holes
- Ergonomic handle with easy-to-read laser-etched markings

SKU# GESP-70 ArmorEdge Wire Stripper- Card of 1



Cable Cutter

- Cuts cleanly with high leverage one hand operation
- Cuts soft copper and aluminum cable
- Precision ground, high strength steel blades
- 8" length

SKU# GC-375 Cable Cutter- Card of 1



Ratcheting Cable Cutter

- Ratcheting mechanism for increased leverage
- Variable-force cutting action permits choice between high force and speed
- Dual-action handles cut from either direction; easy to use in tight spots
- Rubber hand grips permit firm grip control
- Hardened alloy-steel blades are easily sharpened without removing them from the tool

SKU# GRC-750 Ratcheting Cable Cutter- Card of 1



High-Leverage Cutter

- The lightweight handles offer hand grips for comfort and control throughout multiple uses
- Easily cut cable
- Features comfortable rubber grips
- Length: 21"

SKU# GC-500 High-Leverage Cutter- Card of 1



GORILLA WIRE STRIPPER™

- Ergonomic comfort squeeze handle eases hand fatigue and provides non-slip grip
- Features handle lock closure for added safety
- Tools available for multiple solid and stranded wire gauges

SKU# 46005 Gorilla Wire Stripper w/Handle Lock #20-#10 AWG- Card of 1

SKU# 46501 Gorilla Wire Stripper/Crimper/Cutter#22-#10 AWG- Card of 1

SKU# 46515 Gorilla Wire Stripper/Cutter w/Handle Lock #20-#10 AWG- Card of 1



GORILLA UF STRIPPER™

- Strips off outer jacket in one quick motion
- Will not nick copper wire like a traditional knife blade
- Small enough to reach inside boxes and enclosures
- Made of heat-treated carbon steel with long lasting blade
- Ergonomic grip protects tired hands

SKU# 46200 Gorilla UF/NM-B Cable Stripper- Card of 1



Min/Max Strip #14-#10 AWG

King Krimper Tool

- For use with KSC (King Shrink Crimp) connectors
- Ratcheting style tool
- Pre-defined compression for each connector size guarantees a secure connection
- Durable tool for extended use

SKU# 46550 King Krimper- Card of 1



I-tool[®] 2.0

Irrigation Multi-Tool

- 16 tools, includes 6 Irrigation Tools
- Compatible with all major brands
- Punch precise holes in poly
- Quickly remove sediment
- Effortlessly adjust arc
- Pull up any brand sprinkler head
- Lightweight compact style
- Precise construction
- Withstands extended use
- Carrying case included

SKU# 46600 I-tool 2.0 Card of 1

U.S. Pat. D731,270S, D742,714, 9,358,676, D743,234S and all other trademarks, U.S. and Foreign Patents apply. All Rights Reserved.



Electrician's Knife

- Key ring for continuous easy access
- Tempered carbon-steel blades sharpen easily and hold their edge
- Compact 3 3/4" in size
- Spear blade for general cutting and 2 1/2" screwdriver blade with safety lock

SKU# KF-200 Electrician's Knife- Card of 1



SWITCH BLADE PRO

One Touch Quick Release Blade

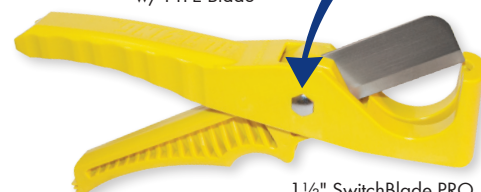
One Touch Quick Release Blade



2" SwitchBlade PRO w/ PTFE Blade



1 1/2" SwitchBlade PRO w/ PTFE Blade



1 1/2" SwitchBlade PRO w/ Stainless Steel Blade

SwitchBlade PRO Cutter

- QUICK RELEASE BLADE: push button blade release for the fastest blade swap on the market
- Cleanly cuts non-metallic flexible conduit
- Comfort fit handle conforms to your hand
- Replacement blades available
- 10 pack dispenser with magnetic backing (not available for 2")

SKU# SB5000 1 1/2" Switchblade PRO w/PTFE Coated Blade- Card of 1

SKU# BL5001 PTFE Coated Replacement Blade- Card of 1

SKU# BL5010 PTFE Coated Replacement Blades- Pack of 10

SKU# SB5000SS 1 1/2" Switchblade PRO w/Stainless Steel Blade- Card of 1

SKU# BL5001SS Stainless Steel Replacement Blade- Card of 1

SKU# BL5010SS Stainless Steel Replacement Blades- Pack of 10

SKU# SB6000 2" Switchblade PRO w/PTFE Coated Blade- Card of 1

SKU# BL6001 2" PTFE Coated Replacement Blade- Card of 1

10 PACK BLADE DISPENSER W/MAGNETIC BACKING



PTFE Blades for SB5000

Stainless Steel Blades for SB5000SS

U.S. Pat. D694,603, 9,566,716, 6,658,738. All Rights Reserved.

2" Ratchet Poly/PVC Pipe Cutter w/Grounding Stud

- Static dissipating grounding stud increases safety
- Stainless Steel blade for precision cuts
- Cuts up to 2" SCH40, 200 Class PVC Pipe or Yellow (PE) Gas Pipe
- Cuts up to 2" Poly (PE) Pipe
- Strong and durable cast aluminum body
- Easy to change blade

SKU# 46360 2" Ratchet- Card of 1

SKU# 46351 2" Ratchet Replacement Blade- Card of 1



2" Ratchet Poly/PVC Pipe Cutter

- Cuts up to 2" SCH40, Class PVC Pipe or Yellow (PE) Gas Pipe
- Cuts up to 2" Poly (PE) Pipe
- Stainless Steel blade for precision cuts
- Strong and durable cast aluminum body
- Easy to change blade

SKU# 46350 2" Ratchet- Card of 1

SKU# 46351 2" Ratchet Replacement Blade- Card of 1



1 1/4" Ratchet Poly/PVC Pipe Cutter

- Cleanly cuts up to 1 1/4" SCH40, Class PVC Pipe and up to 1 1/4" Poly (PE) Pipe
- Durable cast aluminum body
- Pointed steel blade for ease of cutting

SKU# 46310 1 1/4" Ratchet- Card of 1

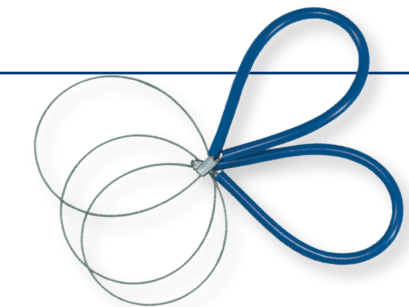
SKU# 46311 1 1/4" Ratchet Replacement Blade- Card of 1



Cable Saw

- 36" Cable Saw
- For fast cutting of PVC plumbing, drain, and irrigation pipe
- Great for tight spaces

SKU# 46300 Cable Saw- Card of 1



Spray-Loc

Spray-Loc

- Easily clean or replace nozzles
- Locks sprinkler head in upward position
- Made of high impact ABS
- Reusable
- 5 Spray Lock tools per ring (all tools one size)

SKU# SL-C550 Blazing Spray-Loc- Ring of 5

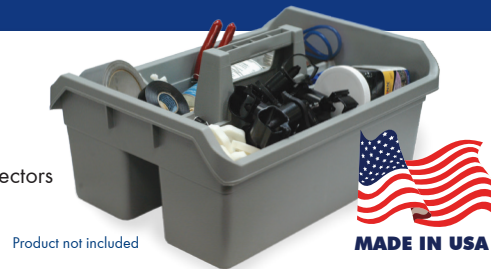
(See page 39 for merchandise display)



Gray Tote Tray

- Easily transport glue, tools, and other supplies to and from job sites
- Oversized for maximum capacity without the worry of spilling
- Storage grooves on the side of handle allow for smaller supplies, such as connectors
- Heavy duty construction

SKU# 47027 Gray Tote Tray- QTY 1



Metal Staples

- Burr-free steel construction
- Recessed head protects cable jacket during installation
- Releasable
- Legs drive straight to resist splitting wood
- Drive in with a hammer; sharp tips for easy start
- Contractor preferred length
- Metal construction with a graphite metallic finish
- Made from steel for strength
- Made in the USA

SKU# MS-1550T Metal Staples 1/2"- Pack of 24
SKU# MS-1575T Metal Staples 9/16"- Pack of 18



Insulated Staples

- Ideal for securing and protecting 2 conductor #12 and #14 Non-Metallic BX, MC, AC and UF cable
- Durable polyethylene insulator protects cables and helps prevent arc faults
- Steel construction provides strength
- Sharp, burr-free tips for easy starting and reduction in damage to wood
- For framing and construction applications, place staple over cable and install using hammer
- 1/2" W
- Made in the USA

SKU# MSI-1525T Insulated Staples 1/2"- Pack of 15



Coaxial Staples

- Great for irrigation wire
- Secures cable of 1/4" diameter or less
- Black polyethylene saddle offers UV resistance for indoor and outdoor applications
- Zinc-plated nail resists rust and corrosion
- Drive in with a hammer
- Suitable for indoor and outdoor applications
- 1 nail per staple for quick and easy installation
- 1/4" W

SKU# PCC-1525 Coaxial Staples 1/4"- Pack of 25



Plastic Electrical Staples

- Polyethylene saddles will not rust, rot or deteriorate
- Zinc-plated nails resist rust and corrosion
- Fast and easy to install - both nails drive together without splitting wood
- Nail heads are recessed for minimum exposure

SKU# PS-50 White Plastic Staple- Bag of 50
SKU# PS-225J White Plastic Staple- Bag of 50
SKU# PS-150 White Plastic Staple- Box of 100



PTFE Thread Tape

- 520" roll
- Creates a watertight seal around threaded pipe joints
- Resists water and corrosion
- Flexible and easy to tear for quick installation
- 0.004" thick, medium density
- Tensile Strength: 3.5 lbs/inch, Elongation: 25%
- Temperature Range: -375°F to 500°F

SKU# 86020 1/2" x 520" PTFE Thread Tape- QTY 1
SKU# 86021 3/4" x 520" PTFE Thread Tape- QTY 1
SKU# 86022 1" x 520" PTFE Thread Tape- QTY 1



Repair Tape

- A quick fix during emergency repairs- leaky hoses, pipe insulation, electrical connections, tool handles, air ducts, and cord/rope ends
- Non-adhesive formula leaves no sticky residue
- Repair Tape is waterproof, weatherproof, and air tight
- Insulate and protect around the house and minimize the need for emergency repairs
- Waterproof and insulate wire connections with no extra equipment or heat required
- Non-Stick Repair Tape fuses only to itself when applied under tension. No sticky residue remains on wrapped surfaces
- Operates and remains flexible from -60°F (-51°C) to 500°F (260°C)
- Stretches up to 300% its original length with 60 ppi tear strength
- A permanent air and water tight seal, Repair Tape has excellent UV Resistance
- Secure: Repair Tape begins to bond immediately on contact with itself. Repositioning is not recommended after 2 minutes of contact, and the bond is permanent within 24 hours

SKU# HTP-1010 Repair Tape, Black, 10', 1 per pack
SKU# HTP-1010WHT Repair Tape, White, 10', 1 per pack



Electrical Tape

- Use for marking and coding wires
- For applications up to 600V
- Temperature rating up to 80°C (176°F)
- UL listed and CSA certified
- Vinyl electrical tape is a tough 7 mil tape with excellent adhesive ability
- Resistant to abrasion, UV rays, moisture and many acids

SKU# GTG-667P Green Electrical Tape, 3/4" x 66', 1 roll per pack
SKU# GTW-667P White Electrical Tape, 3/4" x 66', 1 roll per pack
SKU# GTPC-550 Electrical Tape, 1/2" x 20', Assorted Colors, 5 rolls per pack
SKU# 86001 Black Vinyl Electrical Tape (UL Listed)- QTY 1



Pipe Wrap Tape

- Provides UV and Weather Protection
- Stretchable, strong adhesive
- Great for cast and ductile iron, galvanized steel, electrical conduit types of pipes and fittings
- Waterproof and non-corrosive
- 2" x 100 feet x 10 mil

SKU# 86080 Pipe Wrap Tape- QTY 1



UPC Pipe Wrap Tape

- Provides UV and Weather Protection
- Stretchable, strong adhesive
- Great for cast and ductile iron, galvanized steel, electrical conduit types of pipes and fittings
- Waterproof and non-corrosive
- 2" x 100 feet x 10 mil

SKU# 86081 UPC Pipe Wrap Tape- QTY 1



Duct Tape

- 9 mil, multi-purpose grade tape
- 2" x .0085" x 60 yards
- 48 mm x .210 mm x 55 m
- Excellent adhesion to a wide variety of surfaces
- Use for a broad range of applications or bundling
- Conforms well to irregular spaces

SKU# 86070 Duct Tape- QTY 1



Extension Cords

- Length: 25', 50' or 100'
- Cord color: Yellow or Orange
- Rating: 15A, 125V

SKU# OC100123LT 100' Yellow 12/3 Cord- QTY 1
SKU# OC25143 25' Orange 14/3 Cord- QTY 1
SKU# OC50143 50' Orange 14/3 Cord with Triple Tap- QTY 1
SKU# OC25123-3T 25' Yellow 12/3 Cord with Triple Tap- QTY 1



Black Nylon Cable Ties

- Easy to use ties for landscape lighting on decks or trees, home, electrical, or any fastening needs
- Self-locking, one-piece, low profile head conserves space
- For maximum comfort, smooth rounded edges will not cut hands or insulation
- Available in 8", 11", 14", 17" and 24" sizes
- 8" cable tie available with or without screw mount head
- 1" x 1" adhesive black cable mount available
- Rated for indoor/outdoor use
- Easy to use self-locking ties for many fastening uses
- UV resistant
- Nylon toughness
- Flammability rating: UL 94V-2
- Plenum rated AH-2

SKU# 46-308UVB 8" Black Cable Ties- Bag of 100
 SKU# 46-210UVB 11" Black Cable Ties- Bag of 100
 SKU# 46-315UVB 14" Black Cable Ties- Bag of 100
 SKU# 46-418UVB 17" Black Cable Ties- Bag of 50
 SKU# 46-424UVB 24" Black Cable Ties- Bag of 50
 SKU# 48-308UVB 8" Black Cable Ties with Screw Mount- Bag of 100
 SKU# MB-20UVB Black Cable Mount (not UL Listed)- Bag of 100



Natural Nylon Cable Ties

- Bent tip on all series of cable ties allows easier pick-up insertion, and pull-up
- V-shaped raised ridges on bent tip gives a sure grip and easier pull-up
- Engineered and manufactured for excellent performance
- For maximum comfort, smooth rounded edges will not cut hands or insulation
- Raised ridges on bent tip for a sure grip
- Nylon toughness
- UL 94V-2 flammability classification
- Complies with military spec
- Self-locking, one-piece, low profile head conserves space
- Rated for indoor/outdoor use
- Easy to use self-locking ties for many fastening uses
- Plenum rated AH-2

SKU# 46-104 4" Nylon Cable Ties- Bag of 100
 SKU# 46-308 8" Nylon Cable Ties- Bag of 100
 SKU# 46-310 11" Nylon Cable Ties- Bag of 100
 SKU# 46-315 14" Nylon Cable Ties- Bag of 100



Black Xtreme Cable Ties

- Designed to perform under intense UV and cold weather conditions - your project stays securely bundled no matter what Mother Nature brings
- Engineered from improved Nylon 66 and ISO certified to maintain their properties down to -40°F/C
- UL listed for indoor and outdoor applications from -40°F to 185°F (-20°C - 85°C)
- 50lb. tensile strength
- UV Black

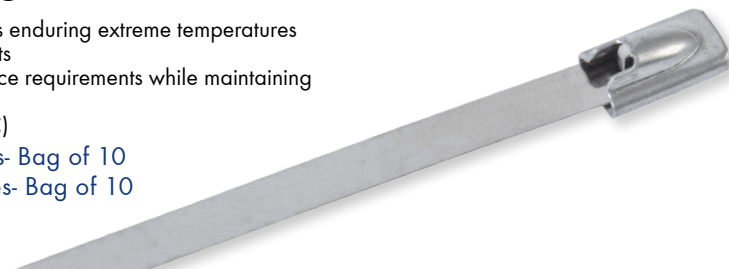
SKU# 45-308UVBFZ 8" Xtreme Cable Tie, Black- Bag of 20
 SKU# 45-311UVBFZ 11" Xtreme Cable Tie, Black- Bag of 20
 SKU# 45-314UVBFZ 14" Xtreme Cable Tie, Black- Bag of 20
 SKU# 46-308UVBFZ 8" Xtreme Cable Tie, Black- Bag of 100
 SKU# 46-311UVBFZ 11" Xtreme Cable Tie, Black- Bag of 100
 SKU# 46-314UVBFZ 14" Xtreme Cable Tie, Black- Bag of 100



Stainless Steel Cable Ties

- Resists chemicals and radiation exposure as well as enduring extreme temperatures
- Stainless steel design is great for clean environments
- Self-locking ball mechanism meets low insertion force requirements while maintaining high tensile strength
- Operating temperature rated up to 572°F (300°C)

SKU# 45-306SS 6" Stainless Steel Cable Ties- Bag of 10
 SKU# 45-312SS 11" Stainless Steel Cable Ties- Bag of 10



Blazing Measuring Wheel

- Road marking, paving, fencing, lawn, landscape, sports fields
- Property assessment, traffic control, insurance
- Mainly used on uneven surface over long distances
- Professional design with Brake Trigger and Reset Trigger
- Measure up to 10,000 feet, inch increments
- High traction flat tire mounted onto rim
- Wheel runs on roller bearings
- Firm and solid kickstand

SKU# BMW12 Measuring Wheel- Carton of 1



Wheel diameter 12"
 Wheel circumference 38"

Parts Sack

- No spilling or losing pieces
- Adjustable belt secures pouch on your hip
- Use for small parts, wire connectors, drip fittings, barbs, and clamps
- Use multiple bags for any parts needed
- Made of robust and water resistant nylon
- No spill, large mouth design
- Adjustable draw cord closure
- Quick release nylon belt included
- Outer Bag Material: Nylon
- Inner Bag Material: Polyester Fleece

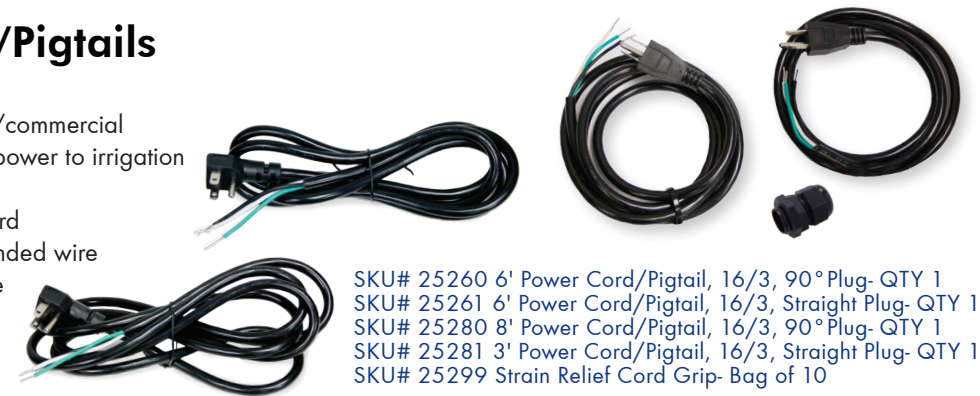
SKU# 47030 Parts Sack- Bag of 1



Bag Size: 5.5" X 4.3"
 Diameter: 4.3"
 Belt Width: .60"
 Belt Length: 48"

Power Cords/Pigtails

- ETL Listed for safety
- For multiple residential/commercial applications including power to irrigation controllers, etc.
- Three (3) conductor cord
- Wire Gauge: #16 stranded wire
- For indoor/outdoor use
- NEMA 5-15P
- 125 VAC



SKU# 25260 6' Power Cord/Pigtail, 16/3, 90° Plug- QTY 1
 SKU# 25261 6' Power Cord/Pigtail, 16/3, Straight Plug- QTY 1
 SKU# 25280 8' Power Cord/Pigtail, 16/3, 90° Plug- QTY 1
 SKU# 25281 3' Power Cord/Pigtail, 16/3, Straight Plug- QTY 1
 SKU# 25299 Strain Relief Cord Grip- Bag of 10

Anchor Kit

- Kit includes 100 #10 x 1" slotted Phillips combination pan head screws
- Kit includes 100 1/4" x 1" plastic anchors
- Free carbide-tipped drill bit included

SKU# 25130 Anchor Kit- QTY 1



Drywall Anchor Kit

- Pre-drills its own small precise hole in drywall
- Attaches through drywall
- Available in zinc or plastic anchors
- Kit includes 50 pan head screws and anchors

SKU# 25140 Drywall Plastic Anchors- QTY 1
 SKU# 25150 Drywall Zinc Anchors- QTY 1



Storage Organizers

- Perfect for storage and organization
- High-impact plastic pail with heavy duty handle
- Storage trays fit snugly inside pail
- Full size sorter trays interchange with half size trays
- Water-resistant lids are easy to put on and take off
- Available in multiple tray quantities for customization

SKU# 47502 5 Gallon Yellow Pail- 1 Lid, 2 Large and 2 Small Black Trays

SKU# 47405 5 Gallon Yellow Pail- 1 Lid, 3 Large Black Trays

SKU# 47506 5 Gallon Yellow Pail- 1 Lid, 6 Small Black Trays



Product not included

Bucket, Lid and Divider Buckets:

- High impact pail with heavy duty handle
- Great for organization and storage needs
- Lid sold separately

Dividers:

- Fits cleanly into buckets to divide into four sections
- Carry pipe fittings, saddles, connectors, and more without intermixing sizes and styles
- Durable material withstands prolonged use

SKU# 47400 Logo Bucket QTY 1

SKU# 47410 Logo Bucket Lid QTY 1

SKU# 47420 Logo Bucket Dividers QTY 1



Front

Back

65' Steel Fish Tape

- Great for fishing wire through conduit and locating underground pipes
- 65' fish tape
- Ergonomic handle
- 8.5 Inch external ring diameter with 4 Inch internal ring diameter

SKU# FTS-65R Fish Tape- Pack of 1



25' Steel Fish Tape

- Compact design houses 25' of tape and fits in tool box or on tool belt
- Wedge-shaped tip prevents hang-up
- Low-memory tape does not curl during extension; perfect for non-conduit situations
- Formed handle fits easily in hand and is positioned to function as a pulling grip
- Compact tape rewind knob for quick retrieval of tape

SKU# EFT-21PN Fish Tape- Pack of 1



15' Mini Cable Snake

- Use for fishing and pulling irrigation and low voltage lighting wires through conduit
- Compact, rugged design can be easily carried and stored
- 15 foot flat steel wire tape fishes under carpets, down walls and over ceilings
- Low-memory tape does not curl during extension - perfect for non-conduit situations
- Durable, high-impact housing resists breaking

SKU# EFT-15 Mini Cable Snake- Pack of 1



Mini-Torch

- Perfect for use with heat shrink style wire connectors
- Uses butane gas (not included)
- Quick light torch with easily adjustable continuous flame
- Compact size for portability
- Includes soldering attachment
- Fuel: Butane
- Operating Time: 30-40 minutes
- Approximate Temperature: Up to 1300°C (2372°F) (blue flame)

SKU# 43010 Mini-Torch- QTY 1

Size: 5.8" h x 4.3" l x 2.40" w
Weight: 5.29oz
Gas container capacity: 0.85oz

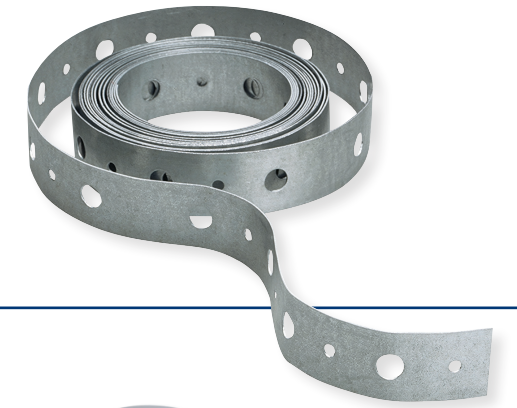
DANGER- EXTREMELY FLAMMABLE
WARNING- CONTENTS UNDER PRESSURE



Hanger Strap

- For hanging or fastening conduit, pipe or cables
- Galvanized to protect against rust and corrosion
- Flexible for easy use
- Pre-punched holes for easy mounting
- 1 per pack
- Shrink Temperature: 120°C

SKU# GHS-1510 Hanger Strap 10' x 3/4" x 20 gauge, 1 per pack



Plastic Conduit Strap

- Securely fasten Schedule 40 PVC, copper tubing, and other electrical and plumbing cables and pipes
- Secures conduit, pipe, tube, or bundle
- Made of heavy-duty polyethylene
- Withstands extreme cold and UV rays
- Will not corrode like metal straps
- Easy to install
- Made in the USA

SKU# GCC-120 1/2" Plastic Conduit Strap, 20 per bag

SKU# GCC-220 3/4" Plastic Conduit Strap, 20 per bag

SKU# GCC-310 1" Plastic Conduit Strap, 10 per bag



Splice Butt Heat Shrink

- Use to extend light and fixture wires
- Adhesive lined butt connectors designed for waterproof heat shrink applications
- Insulates and protects connections from wire pullout, moisture intrusion and abrasion
- Heat-activated adhesive melts and flows to create a reliable and water resistant seal
- Resists salt water, oil, gasoline and other environmental contaminants
- UL and CSA safety listings
- The translucent, gauge printed heat shrink allows for visual inspection after crimp connection
- Clean looking splice for lighting installations in trees

SKU# AMT-4123 Splice Butt Heat Shrink, 7 per clam

#16-14 AWG



Splice Butt Heat Shrink Kit

- Adhesive lined butt connectors are specially designed for waterproof heat shrink applications
- Crimp easily without splitting to secure the connection in place
- Heat shrinking forms a final water-tight seal and the ultimate vibration and strain relief
- Strong connections reduce wire pull out and keep you powered even when faced with heavy vibration
- 22 - 10 AWG assorted butt splices
- 24 per pack

SKU# GBX-TK Splice Butt Heat Shrink Kit, 24 per kit



Vinyl Insulated Terminal Kit

- 61 ring terminals (22-10 AWG, 3/8" to #16 stud)
- 55 spade terminals (22-14 AWG, #10 to #6 stud)
- 26 butt splices (20-10 AWG)
- 33 male/female disconnects (22-12 AWG, 1/4" tab)

SKU# TK-175 Terminal Kit, 175 pc kit



Cable Clamps

- Lightweight plastic construction provides resistance to high and low temperature extremes
- Clean, smooth edges for easy handling and to help prevent cable damage
- Durable, crack-resistant plastic withstands tough conditions at the job site
- Use to hold harnesses, cables and tubing (not included) in construction, maintenance and assembly-line operations
- Mounting holes provided for easy installation with a screw or nail (not included)
- Temperature range: -54°C (-66°F) to 170°C (340°F)
- Easy to install

SKU# PPC-1538 Plastic Cable Clamps, 3/8", 15 per pack
 SKU# PPC-1538UVB Plastic Cable Clamps, 3/8", 15 per pack
 SKU# PPC-1550 Plastic Cable Clamps, 1/2", 12 per pack
 SKU# PPC-1550UVB Plastic Cable Clamps, 1/2", 12 per pack



Cable Wraptor

- Organize cords, hoses, wires, chains and
- Large hang hole is perfect to store and hang
- Stainless steel hinge and spring to prevent rusting
- "T" handle feature allows for easy carrying ropes, cordsets and extension cords
- Large teeth design for secure locking system
- Easy release trigger
- Cable tie looping hole for permanent attachment
- Spring-loaded hinge helps close tail

SKU# CW-T2R2 Cable Wraptor, 1 per pack



U-Phase™ Wire Markers

- Slide marker tip across wire to quickly mark and code irrigation and lighting wire
- Valve activated tip keeps paint fresh
- Marking Temp Range: 0° to 110°F (-18° to 44°C)
- Small lightweight marker design allows for easy storage
- 675' of usage versus the standard 66' of a roll of vinyl tape
- Marks up to #6 AWG wire with highly visible quick-drying permanent paint
- Paint resists abrasion, moisture, dirt, oil and UV light
- Conforms to ASTM D 4236
- Black, Red, White, Green

SKU# GWM-AST U-Phase Wire Markers (assorted), 4 per pack



Wire Marker Book

- Pocket-sized booklets of cloth wire markers and matching terminal markers
- Saves time and money during all on-site initial hookup, troubleshooting, maintenance and repair
- Fabric resists moisture, dirt and oil
- Non-smear legends assure high visibility for instant, positive identification
- Matching terminal marker with every wire marker, plus an extra page of blank write-on wire and terminal markers for special legends

SKU# 42-027 Wire Marker Booklet, 0-9- Pack of 1
 SKU# 42-028 Wire Marker Booklet, A-Z, 0-15, Symbols- Pack of 1



Underground UF Splice Kit

- Accommodates waterproof splicing of #14-#18 AWG UF Copper Wire
- Connector set screws engage each wire securely for a solid splice
- Minimum conductor size 14/2 with ground, max conductor size 8/3 with ground
- 600V Max

SKU# HST-1300 Underground UF Splice Kit, 1 per pack



Closed End Connector

- Crimp connector for use with solid or stranded wire
- #22-#14 AWG
- Vibration, corrosion and chemical resistant
- Tin-plated seamless copper

SKU# 20-089 Nylon Pigtail Connector, White, 10 pc clam



Copper Crimp Connectors

- For permanent copper-to-copper wire connections
- Copper construction
- Pressure-type connection
- Strong vibration resistance
- Rated for use up to 600V

SKU# 10-310C Copper Crimp Connector, 100 pc clam
 SKU# 10-311C Copper Crimp Connector, 50 pc clam



#18-10 AWG

Clamp Ground Rod

- 1/2" - 1", 10 - 2 AWG
- Secure ground wires to ground rod

SKU# 14-GRC Clamp Ground Rod, Bronze- 1 per pack



Black Liquid Electrical Tape

- Brush on liquid tape forms a protective, waterproof, UV resistant, dielectric seal around spliced electrical wire to protect against corrosion and shortages
- Formula is resistant to chemicals, solvents, saltwater and other common fluids
- Quick-drying formula cures in 24 hours
- Will not unravel or deteriorate like traditional tape
- Remains flexible in extreme temperatures and climates -30 to 200°F and -34 to 93°C

SKU# LTB-400 Black Liquid Electrical Tape, 1 jar per pack
 SKU# LTG-400 Green Liquid Electrical Tape, 1 jar per pack



Black Spray Liquid Tape

- Liquid coating used to insulate and protect electrical splices and connections
- Waterproof, will not unravel or deteriorate like traditional tape
- Brush on applicator included

SKU# LTS-400 Black Spray Liquid Tape, 6oz, 1 can per pack

Self Sealing Tape

- High quality tape insulates and seals surfaces
- Fuses to itself during application to stay watertight
- Silicone tape provides permanent hold in 24 hours or in minutes with the application of heat

SKU# RTP-3422 Rubber Tape, 3/4" x 22', 1 roll per pack



Merchandiser Rack

- 6 ft. tall with (header card)
- 15.25" wide (2 sided display area)
- 16.25" deep
- Display high volume, high margin items that will make the irrigation contractor's job easier
- List price rack value \$3,300 (with product)
- All rack orders ship freight prepaid
- Must order one case of all items

SKU# RET360 QTY 1

INCREASE ORDER TOTAL WITH HIGH MARGIN ADD ONS!

From wire markers, repair tape and outdoor rated cable ties to wire strippers, voltage detectors and digital measuring tools, this rack has something that every contractor needs!

ITEMS INCLUDED:

SKU #	DESCRIPTION	PACK QTY	CASE QTY
46200	Gorilla UF/NM-B Cable Stripper	1 pc card	5 cards
10-310C	Crimp Connector, Copper, 18-10 AWG	100 pc clam	5 clams
14-078	Alligator Clip, Fully-Ins, 22-14 AWG, 2"	2 pc card	10 cards
14-GRC	Clamp, Ground Rod, Bronze, 1/2"-1", 10-2 AWG	1 pc card	10 cards
42-028	Wire Marker Booklet, A-Z, 0-15, Symbols	1 pc bag	10 bags
45-308UVBFZ	Cable Tie, 8", Xtreme Black, 50lb	20 pc bag	10 bags
45-311UVBFZ	Cable Tie, 11", Xtreme Black, 50lb	20 pc bag	10 bags
45-314UVBFZ	Cable Tie, 14", Xtreme Black, 50lb	20 pc bag	10 bags
46-308UVBFZ	Cable Tie, 8", Xtreme Black, 50lb	100 pc bag	10 bags
AMT-4123	Splice, Butt, Heat Shrink, Adhesive Lined, Transparent, 16-14 AWG, Blue	7 pc clam	10 clams
BL5001	PTFE Coated Replacement Blade for SB5000	1 pc card	1 card
CW-T2R2	Cable Wraptor, 2 Medium, Black/Red	2 pc card	5 cards
DM6200	Digital Multimeter, Manual, 4 Function, 13 Range	1 pc card	4 cards
EFT-15	Mini Cable Snake, 15	1 pc clam	5 clams
ET6200	Low Voltage Tester, 5-50, VAC/DC	1 pc card	5 cards
GBX-TK	Splice Kit, Butt, Heat Shrink, Adhesive Lined, Transparent, 8 Red, 10 Blue, 6 Yellow	24 pc clam	4 clams
GCC-310	Plastic Strap, 1"	10 pc bag	10 bags
GHS-1510	Strap Hanger, 10-ft x 3/4" x 20 Gauge	1 pc card	10 cards
GS-394	Automatic Stripper & Crimper	1 pc card	5 cards
GTPC-550	Electrical Tape, 1/2" x 20, Assorted Colors	1 roll	10 rolls
GWM-AST	U-Phase Wire Marker Assorted, Black/Red/White/Green, 4 Markers	4 pc card	8 cards
HTP-1010	Tape, Repair Tape, 10	1 pc card	5 cards
LTB-400	Black Liquid Electrical Tape	1 pc clam	5 clams
MS-1550T	Metal Staple, 2 Cond, 1/2"	24 pc card	8 cards
MS-1575T	Metal Staple, 3 Cond 9/16"	18 pc card	8 cards
MSI-1525T	Insulated Staple, 1/2"	15 pc card	5 cards
PCC-1525	Coaxial Staple, 1/4", Clip-on	25 pc clam	10 clams
PPC-1550	Cable Clamp, 1/2"	12 pc bag	10 bags
PPC-1550UVB	UVB Cable Clamp, 1/2"	12 pc bag	10 bags
SB5000	Switch Blade Pro w/PTFE Coated Blade	1 pc. card	5 cards
SBDC1	Fast Fittings Spiral Barb X 17mm Drip Coupling	25 pc bag	4 bags
SE-92	Automatic Wire Stripper	1 pc card	5 cards
TK-175	Kit Terminal, Reusable Case	175 pc case	5 cases
VD6505	Adjustable Non-Contact Voltage Detector, 12-600 VAC	1 pc card	5 cards
RET360	Merchandiser Rack	1 rack	1 rack



Siphon King Display Rack

- 25" tall x 18" wide x 18" deep
- Metal construction, assembles in seconds, no tools required
- Holds 16 Siphon King pumps
- Four sided signage allows for ease of movement and placement anywhere

SKU# RET250- QTY 1]

9" Accessory Hook

Display shown with 8- 36" x 72" Pumps, 4- 24" x 24" pumps, 4- 24" Extension Pumps, 2- Siphon King Syringe Sucker cards and 2- 72" Extension hoses. (Product not included)

9" Accessory Hook

- Fits onto RET250 display without any tools or hassle
- Holds Siphon King accessory items: Syringe Sucker and Extension Hose

SKU# RET251- QTY 1

Display Riser

- Attaches to lower shelf of RET250 display
- Riser allows 24" pump (48024) and 24" Extension Pump (48230) to be displayed

SKU# RET252- QTY 1

Window Cling

- Double sided for viewing inside and outside of store
- 7" long x 4.5" tall
- Easy removal; won't leave residue on windows
- Displays colorful Siphon King logo

SKU# RET825- QTY 1



Display Riser



Window Cling



Peg Board Metal Shelf

- 24" wide x 4" deep
- Fits over standard 1" square peg board panels
- Holds all DryConn connector canister sizes
- Great for behind the counter product merchandising

SKU# RET650 QTY 1

Product not included

Gondola Shelf Strips

- Approximately 24" width x 1 1/4" height
- Easily slides into most shelf channels
- Provides attractive brand identification
- Pack of two (2) shelf strips

SKU# RET850 QTY 1

Peg Board Backer Panel

- 27" tall x 24" wide
- Fits over standard 1" square peg board panels
- Accepts 1/8" or 1/4" peg hooks
- Great for behind the counter product merchandising

SKU# RET350- QTY 1

6" Peg Board Hooks

SKU# RET550- QTY 1 Bag of 20

Product not included



Metal Clip Strip

- 31" long
- Strong gripping clips hold up to 12 individual products
- Easily merchandise fast moving products such as bagged connectors, cutters, or replacement blades

SKU# RET450- QTY 1

Product not included



I-tool 2.0 Display

- Great vibrant display for the counter
- Buy 6 tools, display ships FREE!

See page 26 for product details



TreeLight Mount

- Great vibrant display for the counter
- Buy 6 tools, display ships FREE!

See page 19 for product details



Spray-Loc

Spray-Loc Display

- Great vibrant display for the counter
- Buy 10 rings, display ships FREE!

See page 27 for product details

DryConn Window Cling

- 7" long x 1.75" tall
- Double sided for viewing inside and outside of store
- Easy removal; won't leave residue on windows
- Promotes dependable DryConn® brand

SKU# RET820 QTY 1



