

SECTION D - FITTINGS & VALVES

Brass Compression Fittings 131-132

Chrome Plated Compression Fittings 133

45° Flare Tube Fittings 134-135

Space Heater & Gas Range Fittings 136

Yellow Brass Pipe Fittings 137-138

PEX Fittings 139-140

Push On Fittings 141-146

Red Brass Pipe Fittings 147-148

Bronze Pipe Fittings 149-153

Chrome Plated Pipe Nipples & Fittings 154-155

Brass Garden Hose Fittings 156-157

Brass Hose Barbs 158

Nylon Fittings..... 159-160

Poly Insert Fittings..... 161

Red Brass Insert Fittings..... 162

Galvanized Insert Fittings..... 163

Brass Needle Valves 164

Shut-Off Valves 165

Drain Cocks/Air Cocks..... 166

Ball Valves 167-169

Valves 170

Hose Bibbs 171

Gear Clamps 172-173

Flange Connection Gaskets & Kits 174-175

Rubber Sheet/Gasket Material 176

Water Hammer Arresters 177-178



Compression Cap

Style 61C



PART NO.	TUBE SIZE	CTN/MSTR
C74001	1/4"	500/1000
C74002	3/8"	500/1000
C74147	1/2"	1
C74155	5/8"	1

Compression Sleeve

Style 60



PART NO.	TUBE SIZE	CTN/MSTR
C74003	1/8"	1
C74004	3/16"	1
C74005	1/4"	1
C74006	5/16"	1
C74007	3/8"	10000
C74151	7/16"	1
C74008	1/2"	1
C74009	5/8"	2000/4000
C74010	3/4"	100/1000
C74011	7/8"	1

Compression Nuts

Style 61



• CARTON QUANTITIES ONLY

PART NO.	TUBE SIZE	CTN/MSTR
C74012	1/8"	200
C74013	3/16"	100
C74014	1/4"	500/2000
C74015	5/16"	25
C74016	3/8"	1/2000
C74152	7/16"	10
C74017	1/2"	1
C74018	5/8"	100/400
C74019	3/4"	1
C74020	7/8"	1

Delrin Compression Sleeve

Style 60P



• CARTON QUANTITIES ONLY

PART NO.	TUBE SIZE	CTN/MSTR
C74096	1/4"	100
C74097	3/8"	100
C74098	1/2"	100
C74099	5/8"	50

Brass Compression Insert

Style 63P



PART NO.	TUBE SIZE	CTN/MSTR
C74100	1/4"	100/5000
C74100T	1/4"	10
C74101	3/8"	1000/9000
C74101T	3/8"	10
C74102	1/2"	50
C74103	5/8"	100/3000

Compression Union

Style 62



PART NO.	TUBE SIZE	CTN/MSTR
C74021	1/8"	100/1000
C74022	3/16"	1
C74023	1/4"	100/500
C74024	5/16"	50/500
C74025	3/8"	250/500
C74154	7/16"	1
C74026	1/2"	20/260
C74027	5/8"	20/200
C74028	3/4"	50/150
C74029	7/8"	50/100
C74030	3/8" x 1/4"	1/500
C74031	1/2" x 3/8"	50/300
C74032	5/8" x 3/8"	100/400
C74033	5/8" x 1/2"	25/200

Compression Union - LEAD FREE

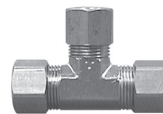
Style 62



PART NO.	TUBE SIZE	CTN/MSTR
C74023LF	1/4"	100/600
C74025LF	3/8"	50/400
C74026LF	1/2"	20/260
C74027LF	5/8"	250
C74029LF	7/8"	1/100
C74030LF	3/8" x 1/4"	1/500
C74031LF	1/2" x 3/8"	1
C74032LF	5/8" x 3/8"	1

Compression Tee

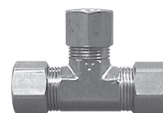
Style 64



PART NO.	TUBE SIZE	CTN/MSTR
C74034	1/4"	1/500
C74035	5/16"	1
C74036	3/8"	125/250
C74037	3/8" x 3/8" x 1/4"	1/300
C74038	1/2"	1/150
C74104	1/2" x 1/2" x 3/8"	1
C74039	5/8"	50/100
C74145	5/8" x 5/8" x 3/8"	1
C74106	5/8" x 5/8" x 1/2"	1
C74107	3/4"	1
C74108	7/8"	10/30

Compression Tee - LEAD FREE

Style 64



PART NO.	TUBE SIZE	CTN/MSTR
C74034LF	1/4"	1
C74036LF	3/8"	300
C74038LF	1/2"	1
C74039LF	5/8"	1

Compression x FIP Branch Tee

Style 78



PART NO.	TUBE x FIP	CTN/MSTR
C74091	3/8" x 1/8"	1
C74092	3/8" x 1/4"	1

Compression x MIP Branch Tee

Style 72



PART NO.	TUBE x MIP	CTN/MSTR
C74056	3/8" x 1/4"	1
C74057	3/8" x 3/8"	1

Compression x Sweat Adapter

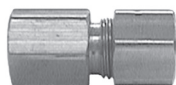
Style 666



PART NO.	TUBE x OD (1/2" swt)	CTN/MSTR
C74093	3/8" x 5/8"	100/250

Compression x FIP Connector

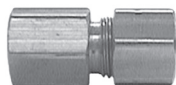
Style 66



PART NO.	TUBE x FIP	CTN/MSTR
C74045	1/4" x 1/8"	250/1000
C74046	1/4" x 1/4"	50/500
C74113	1/4" x 3/8"	250/500
C74114	1/4" x 1/2"	100/400
C74115	5/16" x 1/8"	1
C74047	5/16" x 1/4"	1
C74048	3/8" x 1/8"	1
C74049	3/8" x 1/4"	50/500
C74050	3/8" x 3/8"	100/400
C74051	3/8" x 1/2"	100/400
C74156	3/8" x 3/4"	50/400
C74116	1/2" x 1/4"	50/500
C74052	1/2" x 3/8"	1
C74053	1/2" x 1/2"	1
C74117	1/2" x 3/4"	75/300
C74054	5/8" x 1/2"	1
C74118	5/8" x 3/4"	1/100
C74119	3/4" x 1/2"	1
C74120	3/4" x 3/4"	10
C74150	7/8" x 1/2"	1
C74055	7/8" x 3/4"	10/150

Compression x FIP Connector - LEAD FREE

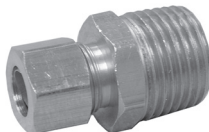
Style 66



PART NO.	TUBE x FIP	CTN/MSTR
C74050LF	3/8" x 3/8"	1
C74051LF	3/8" x 1/2"	1
C74052LF	1/2" x 3/8"	1
C74053LF	1/2" x 1/2"	1
C74054LF	5/8" x 1/2"	1
C74055LF	7/8" x 3/4"	1

Compression x MIP Connector

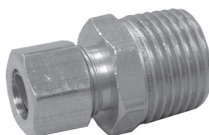
Style 68



PART NO.	TUBE x MIP	CTN/MSTR
C74121	1/8" x 1/8"	1
C74122	3/16" x 1/8"	1
C74058	1/4" x 1/8"	100/1000
C74059	1/4" x 1/4"	50/600
C74060	1/4" x 3/8"	50/500
C74123	1/4" x 1/2"	125/500
C74061	5/16" x 1/8"	250/500
C74062	5/16" x 1/4"	50/500
C74063	3/8" x 1/8"	1
C74064	3/8" x 1/4"	200/800
C74065	3/8" x 3/8"	100/400
C74066	3/8" x 1/2"	100/400
C74067	3/8" x 3/4"	20/200
C74068	1/2" x 1/4"	50/500
C74069	1/2" x 3/8"	10/250
C74070	1/2" x 1/2"	100/400
C74124	1/2" x 3/4"	125/250
C74146	5/8" x 3/8"	50/200
C74071	5/8" x 1/2"	50/200
C74072	5/8" x 3/4"	20/200
C74125	3/4" x 1/2"	100/200
C74126	3/4" x 3/4"	50/100
C74149	7/8" x 1/2"	20/200
C74073	7/8" x 3/4"	1
C74157	7/8" x 1"	50/100

Compression x MIP Connector - LEAD FREE

Style 68



PART NO.	TUBE x MIP	CTN/MSTR
C74058LF	1/4" x 1/8"	1
C74059LF	1/4" x 1/4"	1
C74060LF	1/4" x 3/8"	1
C74064LF	3/8" x 1/4"	1
C74065LF	3/8" x 3/8"	1
C74066LF	3/8" x 1/2"	1
C74069LF	1/2" x 3/8"	1
C74070LF	1/2" x 1/2"	1
C74071LF	5/8" x 1/2"	1
C74072LF	5/8" x 3/4"	1
C74073LF	7/8" x 3/4"	1

Compression Elbow

Style 65



PART NO.	TUBE SIZE	CTN/MSTR
C74040	1/4"	1
C74041	3/8"	50/300
C74042	1/2"	50/200
C74109	1/2" x 3/8"	1
C74043	5/8"	50/100
C74044	5/8" x 3/8"	100/400
C74110	5/8" x 1/2"	1
C74111	3/4"	1/30
C74112	7/8"	1

Compression Elbow - LEAD FREE

Style 65



PART NO.	TUBE SIZE	CTN/MSTR
C74041LF	3/8"	1
C74042LF	1/2"	1
C74043LF	5/8"	1
C74044LF	5/8" x 3/8"	1

Compression x FIP Elbow

Style 70



PART NO.	TUBE x MIP	CTN/MSTR
C74074	1/4" x 1/8"	1
C74075	1/4" x 1/4"	1
C74127	1/4" x 3/8"	1
C74128	1/4" x 1/2"	1
C74129	3/8" x 1/8"	1
C74076	3/8" x 1/4"	1
C74077	3/8" x 3/8"	1
C74078	3/8" x 1/2"	20/250
C74130	1/2" x 1/4"	1
C74131	1/2" x 3/8"	1
C74079	1/2" x 1/2"	1
C74080	5/8" x 1/2"	1
C74132	5/8" x 3/4"	1

Compression x MIP Elbow

Style 69



PART NO.	TUBE x MIP	CTN/MSTR
C74133	1/8" x 1/8"	1
C74134	3/16" x 1/8"	1
C74081	1/4" x 1/8"	1
C74082	1/4" x 1/4"	50/700
C74135	1/4" x 3/8"	1
C74136	1/4" x 1/2"	1
C74083	5/16" x 1/8"	1
C74084	5/16" x 1/4"	1
C74137	3/8" x 1/8"	50/400
C74085	3/8" x 1/4"	50/500
C74086	3/8" x 3/8"	20/300
C74087	3/8" x 1/2"	100/400
C74138	3/8" x 3/4"	1
C74139	1/2" x 1/4"	1
C74088	1/2" x 3/8"	1
C74089	1/2" x 1/2"	50/300
C74140	1/2" x 3/4"	1
C74141	5/8" x 3/8"	75/300
C74090	5/8" x 1/2"	10/250
C74142	5/8" x 3/4"	1
C74143	3/4" x 1/2"	1
C74144	3/4" x 3/4"	10/100
C74148	7/8" x 3/4"	1

Compression x MIP Elbow - LEAD FREE

Style 69



PART NO.	TUBE x MIP	CTN/MSTR
C74081LF	1/4" x 1/8"	1
C74082LF	1/4" x 1/4"	1
C74085LF	3/8" x 1/4"	1
C74086LF	3/8" x 3/8"	1
C74087LF	3/8" x 1/2"	1
C74088LF	1/2" x 3/8"	1
C74089LF	1/2" x 1/2"	1

Pilot Line Breakaway Nut



PART NO.	DESCRIPTION	CTN/MSTR
C74158	1/4" OD	1

Chrome Plated Compression Nut



PART NO.	TUBE SIZE	CTN/MSTR
C74094	3/8"	500/2000
C74095	1/2"	1
N61010	5/8"	1

Chrome Plated Union



PART NO.	TUBE SIZE	CTN/MSTR
N62006	3/8"	50
N62008	1/2"	1
N62010	5/8"	125/300
N62086	1/2" x 3/8"	1
N62106	5/8" x 3/8"	1
N62108	5/8" x 1/2"	1

Chrome Plated Elbow



PART NO.	TUBE SIZE	CTN/MSTR
N65106	5/8" x 3/8"	1

CP Compression x FIP Connector



PART NO.	TUBE x FIP	CTN/MSTR
N66066	3/8" x 3/8"	1
N66068	3/8" x 1/2"	125/250
N66086	1/2" x 3/8"	25/250
N66088	1/2" x 1/2"	125/250

CP Compression x MIP Connector



PART NO.	TUBE x MIP	CTN/MSTR
N68066	3/8" x 3/8"	100/500
N68068	3/8" x 1/2"	100/400
N68086	1/2" x 3/8"	150/300
N68088	1/2" x 1/2"	150/300

CP Compression x Sweat Adapter



PART NO.	TUBE x OD	CTN/MSTR
N66610	3/8" x 5/8" (1/2" swt)	100/200

CP Compression x FIP Elbow



PART NO.	TUBE x FIP	CTN/MSTR
N70066	3/8" x 3/8"	100/400
N70068	3/8" x 1/2"	1/150
N70086	1/2" x 3/8"	1
N70088	1/2" x 1/2"	1

CP Compression x MIP Elbow



PART NO.	TUBE x MIP	CTN/MSTR
N69066	3/8" x 3/8"	1
N69068	3/8" x 1/2"	1
N69086	1/2" x 3/8"	1
N69088	1/2" x 1/2"	1

3' Chrome Plated Brass Cover Tubes



- Plain ends (no threads)
- 20 gauge

PART NO.	DESCRIPTION	CTN/MSTR
T73125	1-1/4" OD x 3' tube	1/25
T73138	1-3/8" OD x 3' tube	1/25
T73150	1-1/2" OD x 3' tube	1/25
T73175	1-3/4" OD x 3' tube	1/25
T73200	2" OD x 3' tube	1/20

Short Flare Nut

Style 41S

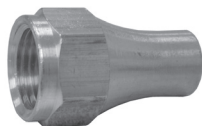


PART NO.	TUBE SIZE	CTN/MSTR
F40001	3/16"	1
F40002	1/4"	100/1200
F40003	5/16"	1
F40004	3/8"	100/2000
F40005	1/2"	10/200
F40006	5/8"	5/200
F40007	3/4"	1
F40126	7/8"	1

D

Long Flare Nut

Style 641FS Style 41L



PART NO.	TUBE SIZE	CTN/MSTR
F40008	3/8"	1
F40131	1/4"	1
F40132	1/2"	1
F40133	5/8"	1

Short Forged Flare Nut

Style 641 FS



PART NO.	TUBE SIZE	CTN/MSTR
F40009	1/4"	1
F40010	3/8"	1
F40011	1/2"	5/200
F40012	5/8"	5/200
F40013	3/8"x 1/4"	1
F40014	1/2"x 3/8"	1
F40119	5/8"x 1/2"	1

Plug

Style 39



PART NO.	TUBE SIZE	CTN/MSTR
F40015	1/4"	1
F40016	3/8"	90/960
F40017	1/2"	50/500
F40018	5/8"	1

Cap

Style 40



PART NO.	TUBE SIZE	CTN/MSTR
F40019	1/4"	1
F40098	5/16"	1
F40020	3/8"	100
F40021	1/2"	100/500
F40022	5/8"	40/480

Flare Tees

Style 44



PART NO.	TUBE SIZE	CTN/MSTR
F40033	1/4"	1
F40034	5/16"	1
F40035	3/8"	10/200
F40036	1/2"	10/200
F40037	5/8"	5/200
F40124	3/4"	1
F40038	3/8"x 3/8"x 1/4"	1
F40039	1/2"x 1/2"x 3/8"	1
F40120	5/8"x 5/8"x 1/2"	1

Flare x MIP Branch Tee

Style 45



PART NO.	TUBE x MIP	CTN/MSTR
F40040	3/8"x 1/4"	1
F40041	3/8"x 3/8"	1

Female Flare Swivel

Style 70



PART NO.	TUBE SIZE	CTN/MSTR
F40125	1/4"	1
F40095	3/8"	100/400
F40096	1/2"	20/250
F40097	5/8"	10/150

Flare Union

Style 42



PART NO.	TUBE SIZE	CTN/MSTR
F40123	3/16"	1
F40023	1/4"	1
F40024	5/16"	1
F40025	3/8"	50/400
F40026	1/2"	10/200
F40027	5/8"	10/200
F40100	3/4"	10/150
F40127	7/8"	1
F40028	3/8"x 1/4"	1
F40029	1/2"x 1/4"	1
F40030	1/2"x 3/8"	10/200
F40031	5/8"x 3/8"	1
F40032	5/8"x 1/2"	1

Flare x MIP Half Union

Style 48



PART NO.	TUBE x MIP	CTN/MSTR
F40062	3/16" x 1/8"	1
F40063	1/4" x 1/8"	1
F40064	1/4" x 1/4"	10/200
F40107	1/4" x 3/8"	1
F40108	1/4" x 1/2"	1
F40065	5/16" x 1/8"	1
F40066	5/16" x 1/4"	1
F40067	3/8" x 1/8"	1
F40068	3/8" x 1/4"	50/500
F40069	3/8" x 3/8"	10/200
F40070	3/8" x 1/2"	10/200
F40071	3/8" x 3/4"	20/240
F40072	1/2" x 1/4"	1
F40073	1/2" x 3/8"	10/200
F40074	1/2" x 1/2"	10/200
F40075	1/2" x 3/4"	10/200
F40109	5/8" x 3/8"	1
F40076	5/8" x 1/2"	20/300
F40077	5/8" x 3/4"	20/200
F40110	3/4" x 1/2"	1
F40112	3/4" x 3/4"	1
F40122	7/8" x 3/4"	1

Flare Elbow

Style 55



PART NO.	TUBE SIZE	CTN/MSTR
F40078	1/4"	1
F40079	3/8"	1
F40080	1/2"	10/250
F40081	5/8"	1

Flare x FIP Elbow

Style 50



PART NO.	TUBE x FIP	CTN/MSTR
F40104	1/4" x 1/4"	1
F40105	1/4" x 3/8"	1
F40056	3/8" x 1/4"	1
F40057	3/8" x 3/8"	1
F40058	3/8" x 1/2"	1
F40059	1/2" x 3/8"	1
F40060	1/2" x 1/2"	1
F40061	5/8" x 1/2"	1
F40106	5/8" x 3/4"	1
F40135	1/2" x 3/4"	1/200

Flare x FIP Coupling

Style 46



PART NO.	TUBE x FIP	CTN/MSTR
F40042	1/4" x 1/8"	1
F40043	1/4" x 1/4"	1
F40117	1/4" x 3/8"	1
F40118	1/4" x 1/2"	1
F40044	5/16" x 1/8"	1
F40045	5/16" x 1/4"	1
F40046	3/8" x 1/8"	1
F40047	3/8" x 1/4"	1
F40048	3/8" x 3/8"	30/300
F40049	3/8" x 1/2"	10/200
F40050	3/8" x 3/4"	1
F40051	1/2" x 1/4"	1
F40052	1/2" x 3/8"	30/300
F40053	1/2" x 1/2"	10/200
F40054	1/2" x 3/4"	20/240
F40055	5/8" x 1/2"	10/200
F40101	5/8" x 3/4"	1
F40102	3/4" x 1/2"	1
F40103	3/4" x 3/4"	1
F40121	7/8" x 3/4"	1

Flare x MIP Elbow

Style 49



PART NO.	TUBE x MIP	CTN/MSTR
F40082	1/4" x 1/8"	1
F40083	1/4" x 1/4"	1
F40113	1/4" x 3/8"	1
F40084	5/16" x 1/8"	1
F40085	5/16" x 1/4"	1
F40086	3/8" x 1/8"	1
F40087	3/8" x 1/4"	1
F40088	3/8" x 3/8"	32/384
F40089	3/8" x 1/2"	20/300
F40090	3/8" x 3/4"	1
F40091	1/2" x 3/8"	10/200
F40114	1/2" x 1/4"	1
F40092	1/2" x 1/2"	10/200
F40093	1/2" x 3/4"	1
F40128	5/8" x 3/8"	1
F40094	5/8" x 1/2"	1
F40115	5/8" x 3/4"	1
F40111	3/4" x 1/2"	1
F40116	3/4" x 3/4"	1

Space Heater Fittings

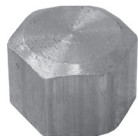
Nut



• 9/16"-24 Fine threaded flare

PART NO.	OD	CTN/MSTR
F41001	3/8"	1
F41002	3/8"x 1/4"	1

Cap



• 9/16"-24 Fine threaded flare

PART NO.	OD	CTN/MSTR
F41003	3/8"	1

Union



• 9/16"-24 Fine threaded flare

PART NO.	OD	CTN/MSTR
F41008	3/8"	1

Female Coupling



• 9/16"-24 Fine threaded flare

PART NO.	OD x FIP	CTN/MSTR
F41004	3/8"x 3/8"	1
F41005	3/8"x 1/2"	1

Male Half Union



• 9/16"-24 Fine threaded flare

PART NO.	OD x MIP	CTN/MSTR
F41006	3/8"x 3/8"	1
F41007	3/8"x 1/2"	1

Tee



• 9/16"-24 Fine threaded flare

PART NO.	OD	CTN/MSTR
F41009	3/8"	1/100

Female Elbow



• 9/16"-24 Fine threaded flare

PART NO.	OD x FIP	CTN/MSTR
F41011	3/8" x 1/2"	1

Male Elbow



• 9/16"-24 Fine threaded flare

PART NO.	OD x MIP	CTN/MSTR
F41012	3/8" x 3/8"	1
F41013	3/8" x 1/2"	1

Gas Range Fittings

Flare x Male



• CARTON QUANTITY: 5

PART NO.	OD x MIP	CTN/MSTR
F48108	5/8" (15/16-16)x 1/2"	1
F481012	5/8" (15/16-16)x 3/4"	1

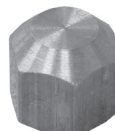
Flare x Female



• CARTON QUANTITY: 5

PART NO.	OD x FIP	CTN/MSTR
F46108	5/8"(15/16-16) x 1/2"	1
F461012	5/8" (15/16-16) x 3/4"	1

Flare Cap & Nut



• CARTON QUANTITY: 5

PART NO.	SIZE	CTN/MSTR
F401516 (cap)	15/16"	1
F411516 (nut)	15/16"	1

D

90° Elbow



PART NO.	IPT	CTN/MSTR
P20002	1/8"	1
P20004	1/4"	1
P20006	3/8"	1
P20008	1/2"	1

90° Male Elbow



PART NO.	IPT	CTN/MSTR
P13986	1/2"	1

90° Street Elbow



PART NO.	IPT	CTN/MSTR
P16002	1/8"	1
P16004	1/4"	200/600
P16006	3/8"	1
P16008	1/2"	1

45° Elbow



PART NO.	IPT	CTN/MSTR
P10452	1/8"	1
P10454	1/4"	1

45° Street Elbow



PART NO.	IPT	CTN/MSTR
P12402	1/8"	1
P12404	1/4"	1
P12406	3/8"	1
P12408	1/2"	1

Tee



PART NO.	IPT	CTN/MSTR
P10012	1/8"	1
P10014	1/4"	1
P10016	3/8"	1
P10018	1/2"	1

Bell Reducer



PART NO.	IPT	CTN/MSTR
P19042	1/4" x 1/8"	1
P19062	3/8" x 1/8"	1
P19064	3/8" x 1/4"	1
P19082	1/2" x 1/8"	1
P19084	1/2" x 1/4"	1
P19086	1/2" x 3/8"	1
P19128	3/4" x 1/2"	1

Coupling



PART NO.	IPT	CTN/MSTR
P10032	1/8"	1
P10034	1/4"	1
P10036	3/8"	1
P10038	1/2"	1
P10312	3/4"	1

Cap



PART NO.	IPT	CTN/MSTR
P10082	1/8"	1
P10084	1/4"	1
P10086	3/8"	1
P10088	1/2"	1
P10812	3/4"	1

Square Head Plug



PART NO.	IPT	CTN/MSTR
P10092	1/8"	1
P10094	1/4"	84/1008
P10096	3/8"	1
P10098	1/2"	1
P10912	3/4"	1

HEX Head Plug



PART NO.	IPT	CTN/MSTR
P12102	1/8"	1
P12104	1/4"	1
P12106	3/8"	1
P12108	1/2"	1
P12112	3/4"	1

D

Countersunk Plug



PART NO.	IPT	CTN/MSTR
P20092	1/8"	1
P20094	1/4"	1
P20096	3/8"	1
P20098	1/2"	1

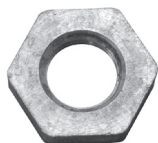
Long Nipple



PART NO.	IPT	CTN/MSTR
P13224	1/8" x 1-1/2"	1
P13232	1/8" x 2"	1
P13424	1/4" x 1-1/2"	1
P13432	1/4" x 2"	1
P13624	3/8" x 1-1/2"	1
P13632	3/8" x 2"	1

Lock Nut

D



PART NO.	IPT	CTN/MSTR
P11102	1/8"	1
P11104	1/4"	1
P11106	3/8"	1
P11108	1/2"	1

HEX Nipple



PART NO.	IPT	CTN/MSTR
P12202	1/8"	1
P12204	1/4"	1
P12206	3/8"	50/450
P12208	1/2"	1
P12212	3/4"	1
P12342	1/4" x 1/8"	1
P12362	3/8" x 1/8"	1
P12364	3/8" x 1/4"	1
P12384	1/2" x 1/4"	1
P12386	1/2" x 3/8"	1
P12328	3/4" x 1/2"	1/200

HEX Bushing



PART NO.	IPT	CTN/MSTR
P11042	1/4" x 1/8"	1
P11062	3/8" x 1/8"	1
P11064	3/8" x 1/4"	90/1080
P11082	1/2" x 1/8"	40/320
P11084	1/2" x 1/4"	40/400
P11086	1/2" x 3/8"	40/480
P11122	3/4" x 1/8"	1
P11124	3/4" x 1/4"	1
P11126	3/4" x 3/8"	40/240
P11128	3/4" x 1/2"	1/400

Face Bushing



PART NO.	IPT	CTN/MSTR
P11964	3/8" x 1/4"	1
P11986	1/2" x 3/8"	1
P11928	3/4" x 1/2"	1

Close Nipple



PART NO.	IPT	CTN/MSTR
P11202	1/8"	1
P11204	1/4"	1
P11206	3/8"	1
P11208	1/2"	1
P11212	3/4"	1

Brass PEX Couplings



PART NO.	SIZE	CTN/MSTR
C76001	1/2"	100/1000
C76002	3/4"	50/500
C76003	1"	50/300
C76004	3/4" x 1/2"	50/500
C76005	1" x 3/4"	25/250

Brass PEX 90° Ell



PART NO.	SIZE	CTN/MSTR
C76008	1/2"	100/500
C76009	3/4"	50/250
C76010	1"	25/100

Brass PEX x MIP 90° Ell



PART NO.	SIZE	CTN/MSTR
C76013	1/2" x 1/2"	25/100

Brass PEX Equal Tee



PART NO.	SIZE	CTN/MSTR
C76014	1/2"	50/500
C76015	3/4"	50/250
C76016	1"	25/100

Brass PEX Tee



PART NO.	SIZE	CTN/MSTR
C76017	1/2" x 1/2" x 3/4"	50/250
C76018	3/4" x 1/2" x 1/2"	50/250
C76019	3/4" x 1/2" x 3/4"	25/250
C76020	3/4" x 3/4" x 1/2"	25/250
C76021	1" x 3/4" x 3/4"	25/100
C76022	1" x 1" x 1/2"	25/100
C76023	1" x 1" x 3/4"	25/100
C76024	3/4" x 3/4" x 1"	25/100
C76025	1" x 3/4" x 1/2"	5/100

Brass PEX x Female Sweat Adapter



PART NO.	PEX x FSW	CTN/MSTR
C76027	1/2" x 1/2"	100/500
C76028	3/4" x 3/4"	50/250
C76029	1/2" x 3/4"	25/250
C76030	1" x 1"	25/200

Brass PEX x Male Adapter



PART NO.	PEX x MIP	CTN/MSTR
C76034	1/2" x 1/2"	25/400
C76035	1/2" x 3/4"	25/200
C76036	3/4" x 3/4"	50/250
C76037	1" x 1"	50/250
C76038	1" x 3/4"	25/100

Brass PEX x FIP Female Adapter



PART NO.	PEX x FIP	CTN/MSTR
C76041	1/2" x 1/2"	50/250
C76042	1/2" x 3/4"	50/200
C76043	3/4" x 3/4"	25/200
C76044	1" x 1"	25/250

Brass PEX x Male Sweat Adapter



PART NO.	PEX x MALE	CTN/MSTR
C76047	3/8" x 1/2"	50/500
C76048	1/2" x 1/2"	50/500
C76049	1/2" x 3/4"	25/100
C76050	3/4" x 3/4"	50/250
C76051	1" x 1"	25/100

Brass PEX x FIP Swivel Plastic Nut



PART NO.	PEX x FIP	CTN/MSTR
C76055	3/8" x 1/2"	25/250
C76056	1/2" x 1/2"	25/100
C76057	1/2" x 7/8"	25/100

Brass PEX x FIP 90° Ell Swivel Plastic Nut



PART NO.	PEX x FIP	CTN/MSTR
C76060	1/2" x 1/2"	50/200
C76061	1/2" x 7/8"	50/200

Brass PEX Ball Valve



PART NO.	PEX x PEX	CTN/MSTR
B63050	1/2"	10/100
B63075	3/4"	10/100
B63100	1"	6/48

Brass PEX Plug



PART NO.	PEX x FIP	CTN/MSTR
C76065	1/2"	100/1000
C76066	3/4"	100/500
C76067	1"	25/250

Brass PEX Crimp Ring



PART NO.	PEX x FIP	CTN/MSTR
C76070	3/8"	100/2000
C76071	1/2"	100/2000
C76072	3/4"	100/1000
C76073	1"	100/1000

Brass PEX x FIP Drop Ear 90° Ell



PART NO.	PEX x FIP	CTN/MSTR
C76080	1/2" x 1/2"	25/200
C76081	3/4" x 1/2"	25/200
C76079	1/2" x 1/2"	25/200

C76-080

C76-079

Oetiker PEX Stainless Steel Clamp



- The original patented pex assembly clamp designated by ASTM F 2098
- Ingenious stepless design provides uniform compression for a 360° watertight seal
- Available for 3/8", 1/2", 3/4" and 1" ASTM F 876/877 pex tubing sizes
- Specified for use with ASTM F 1807 and F 2159 insert fittings

PART NO.	SIZE	CTN/MSTR
C76074	3/8"	100/2000
C76075	1/2"	100/2000
C76076	3/4"	50/2000
C76077	1"	50/1300

TECHNICAL DATA

APPLICATION: HOT AND PLUMBING & HYDRONIC HEATING COLD WATER

MAXIMUM OPERATING TEMPERATURE: 180°F

MAXIMUM OPERATING PRESSURE (PSI): 100

MATERIAL: STAINLESS STEEL UNS S304000

Plastic PEX Tee

Lead Free



- Listed by Warnock Hersey
- Meets ASTM F2159, F877 and CSA B1375
- Will not rust or corrode
- Unaffected by household cleaners and chemicals
- Smooth interior for better water flow
- Resists scale build-up

PART NO.	SIZE	CTN/MSTR
C76700	1/2"	50/400
C76701	3/4"	25/200

Plastic Pex Elbow

Lead Free



- Listed by Warnock Hersey
- Meets ASTM F2159, F877 and CSA B1375
- Will not rust or corrode
- Unaffected by household cleaners and chemicals
- Smooth interior for better water flow
- Resists scale build-up

PART NO.	SIZE	CTN/MSTR
C76702	1/2"	50/500
C76703	3/4"	25/350
C76720	1"	10/150

Plastic Pex Coupling

Lead Free



- Listed by Warnock Hersey
- Meets ASTM F2159, F877 and CSA B1375
- Will not rust or corrode
- Unaffected by household cleaners and chemicals
- Smooth interior for better water flow
- Resists scale build-up

PART NO.	SIZE	CTN/MSTR
C76704	1/2"	50/1000
C76705	3/4"	50/600
C76706	3/4" x 1/2"	50/600
C76722	1"	25/200
C76723	1" x 3/4"	25/300

Plastic Pex Adapter

Lead Free



- Listed by Warnock Hersey
- Meets ASTM F2159, F877 and CSA B1375
- Will not rust or corrode
- Unaffected by household cleaners and chemicals
- Smooth interior for better water flow
- Resists scale build-up

PART NO.	PEX x MPT	CTN/MSTR
C76707	1/2" x 1/2"	50/500
C76708	3/4" x 3/4"	25/300
C76727	1" x 1"	10/150

Plastic Pex Tee

Lead Free



- Listed by Warnock Hersey
- Meets ASTM F2159, F877 and CSA B1375
- Will not rust or corrode
- Unaffected by household cleaners and chemicals
- Smooth interior for better water flow
- Resists scale build-up

PART NO.	SIZE	CTN/MSTR
C76709	1/2" x 1/2" x 3/4"	25/300
C76710	3/4" x 1/2" x 1/2"	25/300
C76711	3/4" x 1/2" x 3/4"	25/250
C76712	3/4" x 3/4" x 1/2"	25/300

Plastic Pex Plug

Lead Free



- Listed by Warnock Hersey
- Meets ASTM F2159, F877 and CSA B1375
- Will not rust or corrode
- Unaffected by household cleaners and chemicals
- Smooth interior for better water flow
- Resists scale build-up

PART NO.	SIZE	CTN/MSTR
C76740	1/2"	100/2000
C76741	3/4"	100/1000

PlumBite Push On Fittings

- Heat free method for joining Copper, CPVC and PEX tube and are designed to save time and money on installations
- To make an effective joint with PEX tube, the included liner must be used. (DO NOT SUBSTITUTE with other manufacturer's liner.)
- Push fit
- Reduced installation time
- Ideal for service and repair
- "O-ring" design for leak free seals
- EPDM O-ring seal
- 316 Stainless steel retaining ring
- Designed for use with ASTM B88 hard drawn and annealed copper tube, type K, L, or M, in the 1/2" through 3/4" size range; CPVC water tube per ASTM D2846/2846M and PEX tube that meets the requirements of ASTM F876 & F877
- Operate at temperatures from 0° to 250°F at a maximum working pressure of 200 PSI
- Sold in bag quantity only

Type of Service	System Operating Conditions
FLUIDS	
Hot and Cold Potable Water	32°F to 200°F, max. 200 PSI
Potable Water System Flushing	Compliant with major plumbing codes
Chilled Water w/Corrosion Inhibitors	0°F to 250°F, max 200 PSI Ethylene Glycol - 50% max. concentration Propylene Glycol - 50% max. concentration
Hydronic Heating	0°F to 250°F, max 200 PSI Ethylene Glycol - 50% max. concentration Propylene Glycol - 50% max. concentration
Rainwater/Greywater	32° F to 250°F, max. 200 PSI

Coupling



PART NO.	SIZE	CTN/MSTR
C76500	1/2"	5/100
C76501	3/4"	5/100
C76550	1"	5/100

Reducer Coupling



PART NO.	SIZE	CTN/MSTR
C76502	3/4" x 1/2"	15/60
C76551	1" x 3/4"	5/100

Adapter C x F



PART NO.	SIZE	CTN/MSTR
C76503	1/2"	10/100
C76504	3/4"	20/60
C76553	1"	5/100

Adapter C x M



PART NO.	SIZE	CTN/MSTR
C76505	1/2"	10/200
C76506	3/4"	5/100
C76554	1"	5/100

90° Ell



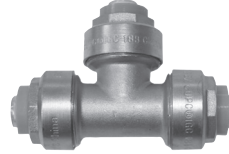
PART NO.	SIZE	CTN/MSTR
C76507	1/2"	10/150
C76508	3/4"	5/80
C76558	1"	5/50

Drop Ear 90° Ell C x F



PART NO.	SIZE	CTN/MSTR
C76509	1/2"	10/100

Tee



PART NO.	SIZE	CTN/MSTR
C76510	1/2"	10/100
C76511	3/4"	10/100
C76512	3/4" x 3/4" x 1/2"	5/50
C76513	3/4" x 1/2" x 3/4"	5/50
C76514	3/4" x 1/2" x 1/2"	5/50
C76555	1"	5/50
C76556	1" x 1" x 3/4"	5/50

Cap



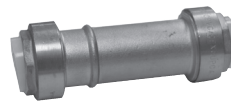
PART NO.	SIZE	CTN/MSTR
C76515	1/2"	10/200
C76516	3/4"	5/150
C76557	1"	5/200

Ball Valve



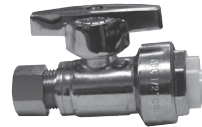
PART NO.	SIZE	CTN/MSTR
C76561	1/2"	10/60
C76562	3/4"	10/40
C76563	1"	6/24

Repair Coupling



PART NO.	SIZE	CTN/MSTR
C76530	1/2"	5/70
C76531	3/4"	5/70
C76532	1"	5/40

Supply Stop



PART NO.	SIZE	CTN QTY
C76570	Straight 1/2" x 3/8"OD	1/120
C76571	Angle 1/2" x 3/8"OD	1/120

Removal Tool



PART NO.	SIZE	CTN QTY
C76520	1/2"	1/500
C76521	3/4"	5/250
C76522	1"	5/200

PlumBite Push On Fittings - LEAD FREE

- Heat free method for joining Copper, CPVC and PEX tube and are designed to save time and money on installations
- To make an effective joint with PEX tube, the included liner must be used. (DO NOT SUBSTITUTE with other manufacturer's liner.)
- Push fit
- Reduced installation time
- Ideal for service and repair
- "O-ring" design for leak free seals
- EPDM O-ring seal
- 316 Stainless steel retaining ring
- Designed for use with ASTM B88 hard drawn and annealed copper tube, type K, L, or M, in the 1/2" through 3/4" size range; CPVC water tube per ASTM D2846/2846M and PEX tube that meets the requirements of ASTM F876 & F877
- Operate at temperatures from 0° to 250°F at a maximum working pressure of 200 PSI
- Sold in bag quantity only

D

Type of Service	System Operating Conditions
FLUIDS	
Hot and Cold Potable Water	32°F to 200°F, max. 200 PSI
Potable Water System Flushing	Compliant with major plumbing codes
Chilled Water w/Corrosion Inhibitors	0°F to 250°F, max 200 PSI
	Ethylene Glycol - 50% max. concentration Propylene Glycol - 50% max. concentration
Hydronic Heating	0°F to 250°F, max 200 concentration
	Ethylene Glycol - 50% max. concentration Propylene Glycol - 50% max. concentration
Rainwater/Greywater	32° F to 250°F, max. 200 PSI

Coupling



PART NO.	SIZE	CTN/MSTR
C76500LF	1/2"	1
C76501LF	3/4"	1

Reducer Coupling



PART NO.	SIZE	CTN/MSTR
C76502LF	3/4" x 1/2"	1

Adapter C x F



PART NO.	SIZE	CTN/MSTR
C76503LF	1/2"	1
C76504LF	3/4"	1

Adapter C x M



PART NO.	SIZE	CTN/MSTR
C76505LF	1/2"	1
C76506LF	3/4"	1

90° Ell



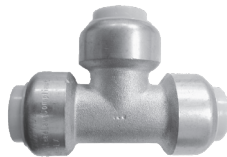
PART NO.	SIZE	CTN/MSTR
C76507LF	1/2"	1
C76508LF	3/4"	1

Drop Ear 90° Ell C x F



PART NO.	SIZE	CTN/MSTR
C76509LF	1/2"	1

Tee



PART NO.	SIZE	CTN/MSTR
C76510LF	1/2"	1
C76511LF	3/4"	1
C76512LF	3/4" x 3/4" x 1/2"	1
C76513LF	3/4" x 1/2" x 3/4"	1
C76514LF	3/4" x 1/2" x 1/2"	1

Cap



PART NO.	SIZE	CTN/MSTR
C76515LF	1/2"	1
C76516LF	3/4"	1

Removal Tool



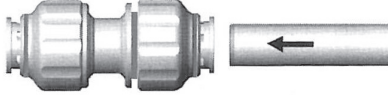
PART NO.	SIZE	CTN/MSTR
C76520	1/2"	1
C76521	3/4"	1
C76522	1"	1

Twist To Lock Plastic Fittings

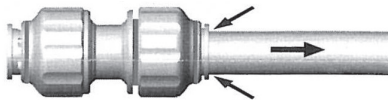
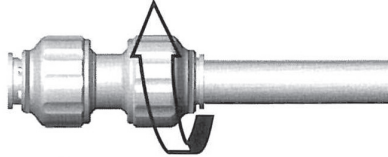
- IAPMO Listed NSF-61, ASSE 1061
- Reduced installation time
- Ideal for service and repair
- “O-ring” design for leak-free seals
- Working temps and pressure:
180PSI@68°F, 100PSI@150°F, 45PSI@180°F

INSTRUCTIONS FOR USE

To Connect: Squarely cut tubing or pipe to desired length, removing all burrs. Push fitting onto the end of tube or pipe. Fitting will grip before it seals. Ensure that tubing or pipe is pushed into the fitting until the end is fully seated into the internal tube stop.



To Lock Fitting: Twist the screw cap until colored line is no longer visible.



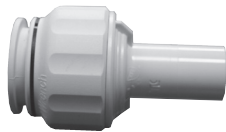
Plastic inserts are required for plastic pipe connections in heating installations. It is recommended to use pipe inserts for plastic pipe connections in standard residential plumbing (hot and cold water) installations.

Drop Ear Elbow CTS



PART NO.	SIZE	CTN/MSTR
C76800	1/2"	3/144

Enlarger Connector CTS STACK x CTS



PART NO.	SIZE	CTN/MSTR
C76801	3/4" x 1"	3/120

Female Adapter CTS x FIP



PART NO.	SIZE	CTN/MSTR
C76802	1/2" x 1/2"	3/321
C76803	1/2" x 3/4"	3/480
C76804	3/4" x 3/4"	3/216
C76805	1" x 1"	3/36

Female Garden Hose Adapter CTS x FGH



PART NO.	SIZE	CTN/MSTR
C76806	1/2" x 3/4"	3/168

Male Adapter CTS x MIP



PART NO.	SIZE	CTN/MSTR
C76807	1/2" x 1/2"	3/330
C76808	1/2" x 3/4"	3/282
C76809	3/4" x 3/4"	3/192

Male Elbow CTS x MIP



PART NO.	SIZE	CTN/MSTR
C76810	1/2" x 1/2"	3/168

Reducing Connector CTS x CTS Stem



PART NO.	SIZE	CTN/MSTR
C76811	1/2" x 3/4"	3/300

Swivel Elbow Union CTS x FIP



PART NO.	SIZE	CTN/MSTR
C76812	1/2" x 1/2"	3/160

Swivel Union Connector CTS x BC



PART NO.	SIZE	CTN/MSTR
C76813	1/2" x BC	3/300

Tube End Stop CTS



PART NO.	SIZE	CTN/MSTR
C76814	1/2"	3/336
C76815	3/4"	3/640
C76816	1"	3/135

Union Connector CTS x CTS



PART NO.	SIZE	CTN/MSTR
C76825	3/8"	3/351
C76826	1/2" x 3/8"	3/528
C76827	1/2"	3/480
C76828	3/4" x 1/2"	3/330
C76829	3/4"	3/288
C76830	1" x 3/4"	3/180
C76831	1"	3/165

Tube Elbow Union CTS x CTS Stem

D



PART NO.	SIZE	CTN/MSTR
C76817	1/2" x 1/2"	3/345
C76818	3/4" x 3/4"	3/180

Tee Union CTS x CTS x CTS



PART NO.	SIZE	CTN/MSTR
C76832	1/2"	3/150
C76833	3/4" x 3/4" x 1/2"	3/180
C76834	3/4"	3/90
C76835	1"	3/78
C76836	1" x 3/4" x 3/4"	3/81
C76837	3/4" x 1/2" x 1/2"	3/180

Elbow Union CTS x CTS



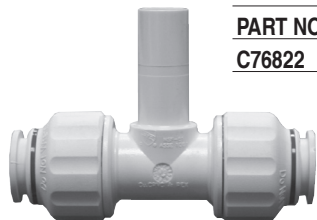
PART NO.	SIZE	CTN/MSTR
C76819	1/2"	3/480
C76820	3/4"	3/60
C76821	1"	3/138

Hand Valve Union Connector CTS x CTS



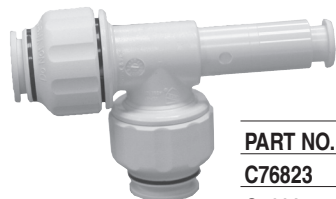
PART NO.	SIZE	CTN/MSTR
C76838	1/2"	3/210
C76839	3/4"	3/120

Tube Tee Union Connector CTS x CTS x CTS Stem



PART NO.	SIZE	CTN/MSTR
C76822	1/2" x 1/2" x 1/2"	3/180

Stack Tube Tee Union CTS



PART NO.	SIZE	CTN/MSTR
C76823	1/2"	3/195
C76824	3/4"	3/102

Plastic Push On Fittings

- Quick and easy installation
- Very durable and fatigue resistant
- Manufactured from safe, non-toxic materials meeting the requirements of the US FDA, WRAS, ANSI/NSF-51, 61 and SK Zert
- All connections can be assembled and disassembled repeatedly

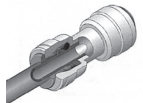


1. Cut the part of the tube to be inserted into the fitting to plane the end.
2. Make sure to use a clean tube without any foreign material or cracks.

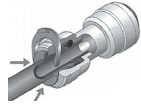


3. When inserting the tube, remove any obstructions before fully inserting the tube. Make sure the tube is fully inserted.

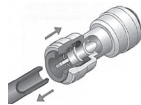
4. Inserting the tube into the fitting only takes moderate force. The tube or fitting should not be scratched or damaged in the process, as this is the main cause for water leaks later on.



5. To make sure that the fitting is properly connected to the tube, pull it once. After pulling, insert a spanner under the collet and push the tube into the fitting once more for a complete insertion.



6. When no play is desired for the fitting and tube, use our company's LC to eliminate the play of the fitting.



7. Make sure to completely eliminate pressure before disassembling the fitting.

8. When disassembling the tube, push the clip in direction to the main assembly and then pull the tube out for easy disassembling.

9. Fittings and tubes can be reused.

Straight Needle Valve CTS x MIP



PART NO.	SIZE	CTN/MSTR
C76840	1/4" x 1/4"	400/1600
C76841	3/8" x 3/8"	100/400

Straight Needle Valve CTS



PART NO.	SIZE	CTN/MSTR
C76842	1/4"	100/400
C76843	3/8"	150/600

Angle Valve CTS x FIP



PART NO.	SIZE	CTN/MSTR
C76844	1/4" x 1/4"	300/1200
C76845	3/8" x 3/8"	100/400

Straight Valve CTS x MIP



PART NO.	SIZE	CTN/MSTR
C76846	1/4" x 1/4"	50/600
C76847	3/8" x 3/8"	100/400

Straight Valve CTS x CTS



PART NO.	SIZE	CTN/MSTR
C76848	1/4"	150/600
C76849	3/8"	100/400

End Cap CTS



PART NO.	SIZE	CTN/MSTR
C76850	1/4"	500/3600
C76851	3/8"	600/2400
C76852	1/2"	400/1600

Plug CTS



PART NO.	SIZE	CTN/MSTR
C76853	1/4"	600/2400
C76854	3/8"	1000/4000
C76855	1/2"	500/2000

Union & Reducing Union CTS x CTS



PART NO.	SIZE	CTN/MSTR
C76856	1/4"	700/2800
C76857	3/8" x 1/4"	250/1000
C76858	3/8" x 3/8"	250/1000
C76859	1/2" x 3/8"	200/800

Bulkhead Union CTS x CTS



PART NO.	SIZE	CTN/MSTR
C76860	1/4" x 1/4"	200/800
C76861	3/8" x 3/8"	200/800
C76862	1/2" x 3/8"	100/400

Tee & Reducing Tee CTS x CTS x CTS



PART NO.	SIZE	CTN/MSTR
C76863	1/4"	400/1600
C76864	3/8" x 3/8" x 1/4"	200/800
C76865	3/8"	150/600
C76866	1/2" x 1/2" x 3/8"	100/400
C76867	1/2"	100/400

Elbow CTS x MIP



PART NO.	SIZE	CTN/MSTR
C76884	1/4" x 1/8"	800/3200
C76885	1/4" x 1/4"	600/2400
C76886	1/4" x 3/8"	500/2000
C76887	3/8" x 1/4"	800/3200
C76888	3/8" x 3/8"	300/1200

D

Elbow & Reducing Elbow CTS x CTS



PART NO.	SIZE	CTN/MSTR
C76868	1/4"	700/2800
C76869	3/8"	300/1200
C76870	1/2"	150/600

Elbow Adapter CTS x CTS Stem



PART NO.	SIZE	CTN/MSTR
C76889	1/4" x 1/4"	500/2000
C76890	3/8" x 3/8"	200/800

Coupling CTS x FIP



PART NO.	SIZE	CTN/MSTR
C76871	1/4" x 1/8"	400/1600
C76872	1/4" x 1/4"	600/2400
C76873	3/8" x 1/4"	300/1200

Connector CTS Stem x Tube ID



PART NO.	SIZE	CTN/MSTR
C76891	3/8" x 3/8"	800/3200
C76892	3/8" x 1/2"	200/800
C76893	1/2" x 1/2"	400/1600

Kitchen Faucet Adapter Tee FIP x MIP x CTS



PART NO.	SIZE	CTN/MSTR
C76874	1/2" x 1/2" x 1/4"	100/400
C76875	1/2" x 1/2" x 3/8"	100/400

Connector CTS x MIP



PART NO.	SIZE	CTN/MSTR
C76876	1/4" x 1/8"	800/3200
C76877	1/4" x 1/4"	800/3200
C76878	1/4" x 3/8"	600/2400
C76879	3/8" x 1/4"	400/1600
C76880	3/8" x 3/8"	400/1600
C76881	3/8" x 1/2"	200/800
C76882	1/2" x 3/8"	300/1200
C76883	1/2" x 1/2"	200/800

Red Brass Pipe Nipples - LEAD FREE

Meets ASTM B687



PART NO.	IPT	CTN/MSTR
N20000	1/8"x close	5/200
N20001	1/8"x 1 1/2"	5/200
N20002	1/8"x 2"	5/200
N20003	1/8"x 2 1/2"	5/25
N20004	1/8"x 3"	5/100
N20005	1/8"x 3 1/2"	5/100
N20006	1/8"x 4"	5/100
N20007	1/8"x 4 1/2"	5/100
N20008	1/8"x 5"	5/100
N20009	1/8"x 5 1/2"	1
N20010	1/8"x 6"	5/125
N20012	1/8"x 7"	1
N20014	1/8"x 8"	1
N20016	1/8"x 9"	5/300
N20018	1/8"x 10"	1
N20020	1/8"x 11"	1
N20022	1/8"x 12"	1/200
N21000	1/4"x close	5/200
N21001	1/4"x 1 1/2"	5/100
N21002	1/4"x 2"	5/100
N21003	1/4"x 2 1/2"	5/100
N21004	1/4"x 3"	5/100
N21005	1/4"x 3 1/2"	5/100
N21006	1/4"x 4"	5/50
N21007	1/4"x 4 1/2"	5/50
N21008	1/4"x 5"	5/40
N21009	1/4"x 5 1/2"	5/25
N21010	1/4"x 6"	5/40
N21012	1/4"x 7"	1
N21014	1/4"x 8"	5/150
N21016	1/4"x 9"	1
N21018	1/4"x 10"	1/100
N21020	1/4"x 11"	1/100
N21022	1/4"x 12"	5/100
N22000	3/8"x close	5/100
N22001	3/8"x 1 1/2"	5/100
N22002	3/8"x 2"	5/30
N22003	3/8"x 2 1/2"	5/80
N22004	3/8"x 3"	5/50
N22005	3/8"x 3 1/2"	5/25
N22006	3/8"x 4"	5/40
N22007	3/8"x 4 1/2"	5/35
N22008	3/8"x 5"	5/30
N22009	3/8"x 5 1/2"	25/100
N22010	3/8"x 6"	5/30
N22012	3/8"x 7"	5/160
N22014	3/8"x 8"	1/160
N22016	3/8"x 9"	1
N22018	3/8"x 10"	1

Red Brass Pipe Nipples cont...

PART NO.	IPT	CTN/MSTR
N22020	3/8"x 11"	1
N22022	3/8"x 12"	1
N23000	1/2"x close	5/75
N23001	1/2"x 1 1/2"	5/60
N23002	1/2"x 2"	5/50
N23003	1/2"x 2 1/2"	5/35
N23004	1/2"x 3"	5/35
N23005	1/2"x 3 1/2"	5/25
N23006	1/2"x 4"	5/25
N23007	1/2"x 4 1/2"	25/100
N23008	1/2"x 5"	5/25
N23009	1/2"x 5 1/2"	5/25
N23010	1/2"x 6"	5/25
N23012	1/2"x 7"	1/100
N23014	1/2"x 8"	1/100
N23016	1/2"x 9"	1/80
N23018	1/2"x 10"	1/80
N23020	1/2"x 11"	1
N23022	1/2"x 12"	1/50
N24000	3/4"x close	5/40
N24001	3/4"x 1 1/2"	5/30
N24002	3/4"x 2"	5/30
N24003	3/4"x 2 1/2"	5/25
N24004	3/4"x 3"	5/25
N24005	3/4"x 3 1/2"	5/35
N24006	3/4"x 4"	5/25
N24007	3/4"x 4 1/2"	5/30
N24008	3/4"x 5"	5/30
N24009	3/4"x 5 1/2"	5/25
N24010	3/4"x 6"	5/25
N24012	3/4"x 7"	1/65
N24014	3/4"x 8"	1/25
N24016	3/4"x 9"	1/25
N24018	3/4"x 10"	1/45
N24020	3/4"x 11"	1/45
N24022	3/4"x 12"	1/45
N25000	1"x close	5/25
N25002	1"x 2"	5/25
N25003	1"x 2 1/2"	5/40
N25004	1"x 3"	5/40
N25005	1"x 3 1/2"	5/25
N25006	1"x 4"	5/25
N25007	1"x 4 1/2"	5/25
N25008	1"x 5"	20/80
N25009	1"x 5 1/2"	1
N25010	1"x 6"	5/10
N25012	1"x 7"	1/400
N25014	1"x 8"	1/40
N25016	1"x 9"	1
N25018	1"x 10"	1/30
N25020	1"x 11"	1/30

D

Red Brass Pipe Nipples cont...

PART NO.	IPT	CTN/MSTR
N25022	1"x 12"	1/30
N27000	1 1/4"x close	5/25
N27002	1 1/4"x 2"	5/25
N27003	1 1/4"x 2 1/2"	5/10
N27004	1 1/4"x 3"	5/10
N27005	1 1/4"x 3 1/2"	5/10
N27006	1 1/4"x 4"	5/10
N27007	1 1/4"x 4 1/2"	5/10
N27008	1 1/4"x 5"	5/10
N27009	1 1/4"x 5 1/2"	5/10
N27010	1 1/4"x 6"	5/10
N27012	1 1/4"x 7"	1/20
N27014	1 1/4"x 8"	1/10
N27016	1 1/4"x 9"	1/10
N27018	1 1/4"x 10"	1/10
N27020	1 1/4"x 11"	1/10
N27022	1 1/4"x 12"	1/20
N28000	1 1/2"x close	5/25
N28002	1 1/2"x 2"	5/25
N28003	1 1/2"x 2 1/2"	1/60
N28004	1 1/2"x 3"	5/15
N28005	1 1/2"x 3 1/2"	5/10
N28006	1 1/2"x 4"	5/15
N28007	1 1/2"x 4 1/2"	5/10
N28008	1 1/2"x 5"	5/20
N28009	1 1/2"x 5 1/2"	5/10
N28010	1 1/2"x 6"	5/10
N28012	1 1/2"x 7"	1/30
N28014	1 1/2"x 8"	5/20
N28016	1 1/2"x 9"	1/20
N28018	1 1/2"x 10"	1/10
N28020	1 1/2"x 11"	1/15
N28022	1 1/2"x 12"	1/15
N29000	2"x close	5/10
N29003	2"x 2 1/2"	5/10
N29004	2"x 3"	5/10
N29005	2"x 3 1/2"	5/15
N29006	2"x 4"	5/15
N29007	2"x 4 1/2"	5/10
N29008	2"x 5"	1/25
N29009	2"x 5 1/2"	1/25
N29010	2"x 6"	1/25
N29012	2"x 7"	1/10
N29014	2"x 8"	1/10

Red Brass Pipe Nipples cont...

PART NO.	IPT	CTN/MSTR
N29016	2"x 9"	1/10
N29018	2"x 10"	1/10
N29020	2"x 11"	1/10
N29022	2"x 12"	1/10
N30000	2 1/2" x close	1/40
N30004	2 1/2"x 3"	1/40
N30005	2 1/2"x 3 1/2"	5/10
N30006	2 1/2"x 4"	1/20
N30007	2 1/2"x 4 1/2"	1/20
N30008	2 1/2"x 5"	1/20
N30009	2 1/2"x 5 1/2"	1/15
N30010	2 1/2"x 6"	1/20
N31000	3"x close	1/20
N31004	3"x 3"	1/20
N31005	3"x 3 1/2"	1/10
N31006	3"x 4"	1/10
N31007	3"x 4 1/2"	1/10
N31008	3"x 5"	1/10
N31009	3"x 5 1/2"	1/10
N31010	3"x 6"	1/10

D

90° Elbow



PART NO.	SIZE	CTN/MSTR
B74001	1/8"	150/600
B74002	1/4"	100/400
B74003	3/8"	75/300
B74004	1/2"	50/200
B74005	3/4"	25/100
B74006	1"	1/80
B74007	1-1/4"	1/50
B74008	1-1/2"	1/35
B74009	2"	1/20
B74010	2-1/2"	1/10
B74011	3"	1/6
B74012	4"	1
B74340	3/8" x 1/4"	1
B74341	1/2" x 1/4"	1
B74342	1/2" x 3/8"	1
B74343	3/4" x 1/2"	30/120
B74344	1" x 1/2"	1
B74345	1" x 3/4"	25/100
B74346	1-1/4" x 1"	1/60
B74347	1-1/2" x 1-1/4"	1/40
B74348	2" x 1-1/2"	1/20
B74386	3/4" x 1/4"	40/160
B74387	3/4" x 3/8"	1
B74388	1-1/4" x 1/2"	1
B74389	1-1/4" x 3/4"	1
B74390	1-1/2" x 3/4"	1/20
B74391	1-1/2" x 1"	1/15

90° Street Elbow



PART NO.	SIZE	CTN/MSTR
B74021	1/8"	200/800
B74022	1/4"	100/400
B74023	3/8"	60/240
B74024	1/2"	50/200
B74025	3/4"	25/100
B74026	1"	1/50
B74027	1-1/4"	1/40
B74028	1-1/2"	1/35
B74029	2"	1/20
B74030	2-1/2"	1/9
B74031	3"	1/6
B74032	4"	1/2

D

90° Street Elbow - LEAD FREE



PART NO.	SIZE	CTN/MSTR
B74024LF	1/2"	5/60
B74025LF	3/4"	5/35
B74026LF	1"	5/45

90° Elbow - LEAD FREE



PART NO.	SIZE	CTN/MSTR
B74002LF	1/4"	1
B74003LF	3/8"	1
B74004LF	1/2"	1
B74341LF	1/2" x 1/4"	1
B74005LF	3/4"	1
B74006LF	1"	1
B74344LF	1" x 1/2"	1
B74345LF	1" x 3/4"	1
B74008LF	1-1/2"	1
B74347LF	1-1/2" x 1-1/4"	1
B74009LF	2"	1

45° Elbow



PART NO.	SIZE	CTN/MSTR
B74041	1/8"	200/800
B74042	1/4"	1
B74043	3/8"	75/300
B74044	1/2"	50/200
B74045	3/4"	25/100
B74046	1"	1/90
B74047	1-1/4"	1
B74048	1-1/2"	1/40
B74049	2"	25
B74050	2-1/2"	1/12
B74051	3"	1/8
B74052	4"	1/4

SPECIFICATIONS:

ANSI B16.15
 ANSI B2.1 (PIPE THREADS)
 FED WW-P-460
 FED WW-U-516
 150 PSI @400°F WSP
 225 PSI WOG@ -20°F / 150°F

45° Elbow - LEAD FREE



PART NO.	SIZE	CTN/MSTR
B74044LF	1/2"	1
B74045LF	3/4"	1
B74046LF	1"	1

45° Street Elbow



PART NO.	SIZE	CTN/MSTR
B74061	1/8"	200/800
B74062	1/4"	60/240
B74063	3/8"	25/150
B74064	1/2"	50/200
B74065	3/4"	25/100
B74066	1"	1/80
B74067	1-1/4"	1/50
B74068	1-1/2"	1/35
B74069	2"	1/20

D

45° Street Elbow - LEAD FREE



PART NO.	SIZE	CTN/MSTR
B74067LF	1-1/4"	1

Union



PART NO.	SIZE	CTN/MSTR
B74261	1/8"	1
B74262	1/4"	60/240
B74263	3/8"	30/120
B74264	1/2"	25/100
B74265	3/4"	20/80
B74266	1"	1/50
B74267	1-1/4"	1/35
B74268	1-1/2"	1/25
B74269	2"	1/18
B74270	2-1/2"	1/10
B74271	3"	1/8
B74272	4"	1/3

Union - LEAD FREE



PART NO.	SIZE	CTN/MSTR
B74264LF	1/2"	1
B74265LF	3/4"	1
B74266LF	1"	1
B74267LF	1-1/4"	1
B74269LF	2"	1

Tee



PART NO.	SIZE	CTN/MSTR
B74081	1/8"	120/480
B74082	1/4"	75/300
B74083	3/8"	50/200
B74084	1/2"	25/100
B74085	3/4"	1/85
B74086	1"	1/35
B74087	1-1/4"	1/35
B74088	1-1/2"	1/24
B74089	2"	1/15
B74090	2-1/2"	8
B74091	3"	1/4
B74092	4"	1/2
B74354	1/2" x 3/8"	35
B74355	3/4" x 1/4"	25/100
B74356	3/4" x 3/8"	25/100
B74357	3/4" x 1/2" x 1/2"	100
B74358	3/4" x 1/2" x 3/4"	1/100
B74359	3/4" x 1/2"	25/100
B74360	1" x 1/2" x 1/2"	1/70
B74361	1" x 1/2" x 1"	1
B74362	1" x 1/2"	1/75
B74363	1" x 3/4" x 3/4"	5/120
B74364	1" x 3/4" x 1"	1/65
B74365	1" x 3/4"	1/70
B74369	1-1/4" x 3/4"	1/35
B74366	1-1/4" x 1"	1/35
B74367	1-1/2" x 1-1/4"	1
B74368	2" x 1-1/2"	1/15
B74392	3/8" x 1/4"	60/240
B74393	1/2" x 3/8" x 1/2"	1
B74394	1/2" x 1/2" x 3/4"	1
B74397	1-1/2" x 1"	1/20

Tee - LEAD FREE



PART NO.	SIZE	CTN/MSTR
B74082LF	1/4"	1
B74083LF	3/8"	1
B74084LF	1/2"	1
B74085LF	3/4"	1
B74086LF	1"	1
B74087LF	1-1/4"	1
B74088LF	1-1/2"	1
B74090LF	2-1/2"	1
B74354LF	1/2" x 3/8"	1
B74395LF	3/4" x 1/4"	1
B74358LF	3/4" x 1/2" x 3/4"	1
B74359LF	3/4" x 1/2"	1
B74395LF	3/4" x 3/8"	1
B74365LF	1" x 3/4"	1
B74367LF	1-1/2" x 1-1/4"	1
B74369LF	1-1/4" x 3/4"	1
B74368LF	2" x 1-1/2"	1

Cap



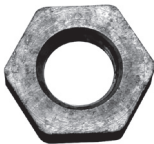
PART NO.	SIZE	CTN/MSTR
B74181	1/8"	1
B74182	1/4"	200/800
B74183	3/8"	150/600
B74184	1/2"	100/400
B74185	3/4"	50/200
B74186	1"	40/160
B74187	1-1/4"	1/100
B74188	1-1/2"	1/100
B74189	2"	1/70
B74190	2-1/2"	1
B74191	3"	1/25
B74192	4"	1/10

Cap - LEAD FREE



PART NO.	SIZE	CTN/MSTR
B74183LF	3/8"	1
B74184LF	1/2"	1
B74185LF	3/4"	1
B74186LF	1"	1

Bronze Locknuts



PART NO.	SIZE	CTN/MSTR
B74380	1/2"	150/600
B74381	3/4"	90/360
B74382	1"	60/240
B74383	1-1/4"	1
B74384	1-1/2"	1
B74385	2"	1

Coupling/ Reducer



PART NO.	SIZE	CTN/MSTR
B74121	1/8"	200/800
B74122	1/4"	150/600
B74123	3/8"	100/400
B74124	1/2"	50/200
B74125	3/4"	5/100
B74126	1"	1/100
B74127	1-1/4"	1/175
B74128	1-1/2"	1/50
B74129	2"	1/30
B74130	2-1/2"	1/18
B74131	3"	1/12
B74132	4"	1/6
B74140	1/4" x 1/8"	150/600
B74141	3/8" x 1/8"	1
B74142	3/8" x 1/4"	90/360
B74143	1/2" x 1/8"	75/300
B74144	1/2" x 1/4"	75/300
B74145	1/2" x 3/8"	70/280
B74146	3/4" x 1/4"	50/200
B74147	3/4" x 3/8"	45/180
B74148	3/4" x 1/2"	45/180
B74149	1" x 1/2"	30/120
B74150	1" x 3/4"	25/100
B74151	1-1/4" x 1/2"	1
B74152	1-1/4" x 3/4"	1/90
B74153	1-1/4" x 1"	1/80
B74154	1-1/2" x 1/2"	1
B74155	1-1/2" x 3/4"	1/80
B74156	1-1/2" x 1"	1/65
B74157	1-1/2" x 1-1/4"	60
B74158	2" x 3/4"	1/40
B74159	2" x 1"	1/40
B74160	2" x 1-1/4"	1/40
B74161	2" x 1-1/2"	1/35
B74162	2-1/2" x 2"	1/20
B74163	3" x 2"	1/16
B74164	4" x 3"	1/6

D

Coupling/ Reducer - LEAD FREE



PART NO.	SIZE	CTN/MSTR
B74123LF	3/8"	1
B74124LF	1/2"	1
B74125LF	3/4"	1
B74126LF	1"	1
B74127LF	1-1/4"	1
B74128LF	1-1/2"	1
B74129LF	2"	1
B74132LF	4"	1
B74144LF	1/2" x 1/4"	1
B74145LF	1/2" x 3/8"	1
B74148LF	3/4" x 1/2"	1
B74150LF	1" x 3/4"	1
B74152LF	1-1/4" x 3/4"	1
B74153LF	1-1/4" x 1"	1
B74154LF	1-1/2" x 1/2"	1
B74161LF	2" x 1-1/2"	1

Extension Piece



PART NO.	SIZE	CTN/MSTR
B74370	3/4"	40/160
B74400	1/2"	1

Countersunk Plug



PART NO.	SIZE	CTN/MSTR
B74321	1/8"	1
B74322	1/4"	1
B74323	3/8"	1
B74324	1/2"	150/600
B74325	3/4"	100/400
B74326	1"	50/200
B74327	1-1/4"	30/140
B74328	1-1/2"	1/120
B74329	2"	1/75
B74330	2-1/2"	1/72
B74331	3"	1/32
B74332	4"	1/20

Corded Square Head Plug

D



PART NO.	SIZE	CTN/MSTR
B74284	1/2"	150/600
B74285	3/4"	100/400
B74286	1"	50/200
B74287	1-1/4"	140
B74288	1-1/2"	120
B74289	2"	1/75
B74290	2-1/2"	1/40
B74291	3"	1/32
B74292	4"	1/20

Countersunk Plug - LEAD FREE



PART NO.	SIZE	CTN/MSTR
B74331LF	3"	1

Cored Square Head Plug - LEAD FREE



PART NO.	SIZE	CTN/MSTR
B74284LF	1/2"	1
B74285LF	3/4"	1
B74286LF	1"	1

Cross



PART NO.	SIZE	CTN/MSTR
B74101	1/8"	1
B74102	1/4"	60/240
B74103	3/8"	35/140
B74104	1/2"	25/100
B74105	3/4"	1/60
B74106	1"	1/40
B74107	1-1/4"	1/24
B74108	1-1/2"	1/22
B74109	2"	1/12

Solid Square Head Plug



PART NO.	SIZE	CTN/MSTR
B74301	1/8"	1
B74302	1/4"	1/690
B74303	3/8"	1/310
B74304	1/2"	100/400
B74305	3/4"	50/200
B74306	1"	35/140
B74307	1-1/4"	1/100
B74308	1-1/2"	1/65
B74309	2"	1/35
B74310	2-1/2"	1/20
B74311	3"	1/12
B74312	4"	1/8

Cross - LEAD FREE



PART NO.	SIZE	CTN/MSTR
B74107LF	1-1/4"	1
B74108LF	1-1/2"	1

Solid Square Head Plug - LEAD FREE



PART NO.	SIZE	CTN/MSTR
B74304LF	1/2"	1
B74305LF	3/4"	1
B74306LF	1"	1

HEX Brushing

PART NO.	SIZE	CTN/MSTR
B74200	1/4" x 1/8"	1
B74201	3/8" x 1/8"	250/1000
B74202	3/8" x 1/4"	250/1000
B74203	1/2" x 1/8"	150/600
B74204	1/2" x 1/4"	150/600
B74205	1/2" x 3/8"	1/1000
B74206	3/4" x 1/8"	75/300
B74207	3/4" x 1/4"	80/320
B74208	3/4" x 3/8"	85/340
B74209	3/4" x 1/2"	90/360
B74210	1" x 1/4"	50/200
B74211	1" x 3/8"	50/200
B74212	1" x 1/2"	50/200
B74213	1" x 3/4"	50/200
B74214	1-1/4" x 1/4"	1/160
B74215	1-1/4" x 3/8"	1
B74216	1-1/4" x 1/2"	1/120
B74217	1-1/4" x 3/4"	1/120
B74218	1-1/4" x 1"	1/120
B74219	1-1/2" x 1/4"	1
B74220	1-1/2" x 3/8"	1
B74221	1-1/2" x 1/2"	1/120
B74222	1-1/2" x 3/4"	1/85
B74223	1-1/2" x 1"	1/115
B74224	1-1/2" x 1-1/4"	1/120
B74225	2" x 1/4"	1
B74226	2" x 3/8"	1/70
B74227	2" x 1/2"	1/20
B74228	2" x 3/4"	1/60
B74229	2" x 1"	1/60
B74230	2" x 1-1/4"	1/65
B74231	2" x 1-1/2"	1/65
B74232	2-1/2" x 2"	1/40
B74233	3" x 2"	1/20
B74234	3" x 2-1/2"	1/24
B74235	4" x 3"	1/12

HEX Bushing - LEAD FREE

PART NO.	SIZE	CTN/MSTR
B74203LF	1/2" x 1/8"	1
B74204LF	1/2" x 1/4"	1
B74205LF	1/2" x 3/8"	1
B74207LF	3/4" x 1/4"	1
B74209LF	3/4" x 1/2"	1
B74212LF	1" x 1/2"	1
B74213LF	1" x 3/4"	1
B74217LF	1-1/4" x 3/4"	1
B74218LF	1-1/4" x 1"	1
B74220LF	1-1/2" x 3/8"	1
B74222LF	1-1/2" x 3/4"	1
B74223LF	1-1/2" x 1"	1
B74224LF	1-1/2" x 1-1/4"	1
B74228LF	2" x 3/4"	1
B74229LF	2" x 1"	1
B74231LF	2" x 1-1/2"	1
B74232LF	2-1/2" x 2"	1
B74235LF	4" x 3"	1

D

Chrome Plated Nipples & Pipe Lengths



PART NO.	SIZE	CTN/MSTR
N15100	3/8" x close	50/400
N15150	3/8" x 1-1/2"	25/400
N15200	3/8" x 2"	50/400
N15250	3/8" x 2-1/2"	50/300
N15300	3/8" x 3"	50/300
N15350	3/8" x 3-1/2"	50/200
N15400	3/8" x 4"	25/100
N15450	3/8" x 4-1/2"	50/200
N15500	3/8" x 5"	50/200
N15550	3/8" x 5-1/2"	25/100
N15600	3/8" x 6"	25/100
N15900	3/8" x 12"	25/50
N15918	3/8" x 18"	1/50
N15924	3/8" x 24"	1/10
N15936	3/8" x 36"	1/10
N15948	3/8" x 48"	1/10
N15960	3/8" x 60"	1/8
N15972	3/8" x 72"	1/10
N16100	1/2" x close	50/400
N16150	1/2" x 1-1/2"	50/400
N16200	1/2" x 2"	50/400
N16250	1/2" x 2-1/2"	75/300
N16300	1/2" x 3"	75/300
N16350	1/2" x 3-1/2"	50/200
N16400	1/2" x 4"	25/100
N16450	1/2" x 4-1/2"	25/100
N16500	1/2" x 5"	1
N16550	1/2" x 5-1/2"	25/100
N16600	1/2" x 6"	25/100
N16900	1/2" x 12"	10/50
N16918	1/2" x 18"	1/10
N16924	1/2" x 24"	1/10
N16936	1/2" x 36"	1/10
N16948	1/2" x 48"	1/10
N16960	1/2" x 60"	1/10
N16972	1/2" x 72"	10
N17100	3/4" x close	50/100
N17150	3/4" x 1-1/2"	50/200
N17200	3/4" x 2"	100/200
N17250	3/4" x 2-1/2"	25/200
N17300	3/4" x 3"	1/30
N17350	3/4" x 3-1/2"	1
N17400	3/4" x 4"	25/100
N17450	3/4" x 4-1/2"	25/100
N17500	3/4" x 5"	25/100
N17550	3/4" x 5-1/2"	25/100
N17600	3/4" x 6"	25/100
N18100	1" x close	20/200
N18200	1" x 2"	20/200
N18250	1" x 2-1/2"	20/100
N18300	1" x 3"	25/100
N18400	1" x 4"	25/100
N18500	1" x 5"	10/50
N18600	1" x 6"	10/50

D

90° Elbow



PART NO.	SIZE	CTN/MSTR
B50001	3/8"	25/100
B50002	1/2"	50/200
B50003	3/4"	25/100
B50004	1"	1/80

90° Elbow - LEAD FREE



PART NO.	SIZE	CTN/MSTR
B50002LF	1/2"	1
B50003LF	3/4"	1

90° Street Elbow



PART NO.	SIZE	CTN/MSTR
B50093	3/8"	60/240
B50094	1/2"	25/100
B50098	3/4"	25/100
B50103	1"	1/50

90° Street Elbow - LEAD FREE



PART NO.	SIZE	CTN/MSTR
B50094LF	1/2"	1
B50098LF	3/4"	1

45° Elbow



PART NO.	SIZE	CTN/MSTR
B50011	3/8"	25/100
B50012	1/2"	50/200
B50013	3/4"	25/100
B50014	1"	1/90

45° Elbow - LEAD FREE



PART NO.	SIZE	CTN/MSTR
B50011LF	3/8"	1
B50012LF	1/2"	1
B50013LF	3/4"	1

Tee



PART NO.	SIZE	CTN/MSTR
B50031	3/8"	50/200
B50032	1/2"	50/100
B50033	3/4"	1/85
B50034	1"	1

Tee - LEAD FREE



PART NO.	SIZE	CTN/MSTR
B50032LF	1/2"	1
B50033LF	3/4"	1

Coupling



PART NO.	SIZE	CTN/MSTR
B50041	3/8"	25/400
B50042	1/2"	50/200
B50043	3/4"	25/100
B50044	1"	25/100

Coupling - LEAD FREE



PART NO.	SIZE	CTN/MSTR
B50042LF	1/2"	1
B50043LF	3/4"	1
B50044LF	1"	1

Reducer



PART NO.	SIZE	CTN/MSTR
B50051	1/2"x 3/8"	70/280
B50052	3/4"x 1/2"	45/180

Reducer - LEAD FREE



PART NO.	SIZE	CTN/MSTR
B50052LF	3/4"x 1/2"	1

Bushing



PART NO.	SIZE	CTN/MSTR
B50072	1/2"x 3/8"	50/200
B50073	3/4"x 1/2"	90/360
B50074	1"x 1/2"	1
B50075	1"x 3/4"	50/200

Bushing - LEAD FREE



PART NO.	SIZE	CTN/MSTR
B50073LF	3/4"x 1/2"	1

Union



PART NO.	SIZE	CTN/MSTR
B50091	3/8"	30/120
B50092	1/2"	25/100
B50097	3/4"	20/80
B50100	1"	50

Union - LEAD FREE



PART NO.	SIZE	CTN/MSTR
B50092LF	1/2"	1
B50097LF	3/4"	1

Plug



PART NO.	SIZE	CTN/MSTR
B50095	3/8"	75/300
B50096	1/2"	100/400
B50099	3/4"	1
B50101	1"	35/140

Plug - LEAD FREE



PART NO.	SIZE	CTN/MSTR
B50096LF	1/2"	1
B50099LF	3/4"	1

Cap



PART NO.	SIZE	CTN/MSTR
B50081	3/8"	150/600
B50082	1/2"	100/400
B50083	3/4"	50/200
B50084	1"	40/160

Cap - LEAD FREE



PART NO.	SIZE	CTN/MSTR
B50082LF	1/2"	1
B50083LF	3/4"	1

D

Male Hose To Male Pipe



PART NO.	MHT x MPT	CTN/MSTR
G20002	3/4" x 1/2"	20/200
G20003	3/4" x 3/4" (1/2" FIP tap)	20/200
G20004	3/4" x 1/2" (1/2" swt)	50/200

Male Hose To Male Pipe - LEAD FREE



PART NO.	MHT x MPT	CTN/MSTR
G20102	3/4" x 1/2"	1/40
G20103	3/4" x 3/4" (1/2" FIP tap)	50/200

Male Hose To Male Hose



PART NO.	MHT x MHT	CTN/MSTR
G20008	3/4" x 3/4" (1/2" FIP tap)	20/200

Male Hose To Male Hose - LEAD FREE



PART NO.	MHT x MHT	CTN. QTY.
G20108	3/4" x 3/4" (1/2" FIP tap)	1/40

Male Hose To Female Pipe



PART NO.	MHT x FPT	CTN/MSTR
G20010	3/4" x 1/2"	100/500
G20011	3/4" x 3/4"	20/200

Male Hose To Female Pipe - LEAD FREE



PART NO.	MHT x FPT	CTN/MSTR
G20110	3/4" x 1/2"	1/40
G20111	3/4" x 3/4"	1/40

Female Hose To Male Pipe



PART NO.	FHT x MPT	CTN/MSTR
G20005	3/4" x 1/2" (1/2" SWT)	
G20015	3/4" x 1/2"	50/250
G20016	3/4" x 3/4"	50/250
G20017	3/4" x 3/4" (1/2" FIP tap)	50/200

Female Hose To Male Pipe - LEAD FREE



PART NO.	FHT x MPT	CTN/MSTR
G20115	3/4" x 1/2"	50/200
G20116	3/4" x 3/4"	1/40

Female Hose To Female Pipe



PART NO.	FHT x FPT	CTN/MSTR
G20020	3/4" x 1/2"	50/200
G20021	3/4" x 3/4"	50/200

Female Hose To Female Pipe - LEAD FREE



PART NO.	FHT x FPT	CTN/MSTR
G20120	3/4" x 1/2"	1/40
G20121	3/4" x 3/4"	1/40

Female Hose To Female Hose Swivel



PART NO.	FHT x FHT	CTN/MSTR
G20030	3/4" x 3/4"	20/200

Female Hose To Female Hose Swivel - LEAD FREE



PART NO.	FHT x FHT	CTN/MSTR
G20130	3/4" x 3/4"	1/40

Female Hose To Female Pipe Swivel



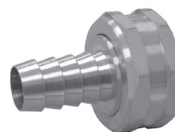
PART NO.	FHT x FPT	CTN/MSTR
G20031	3/4" x 1/2"	20/200
G20032	3/4" x 3/4"	125/250

Female Hose To Female Pipe Swivel - LEAD FREE



PART NO.	FHT x FPT	CTN/MSTR
G20131	3/4" x 1/2"	1/40
G20132	3/4" x 3/4"	1/40

Hose Barb To Female Hose Swivel



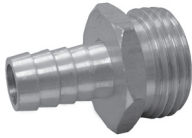
PART NO.	HB x FHT	CTN/MSTR
G20035	3/8" x 3/4"	140
G20036	1/2" x 3/4"	20/245
G20037	5/8" x 3/4"	1
G20038	3/4" x 3/4"	1

Hose Barb To Female Hose Swivel - LEAD FREE



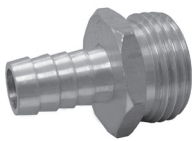
PART NO.	HB x FHT	CTN/MSTR
G20136	1/2" x 3/4"	50/200
G20137	5/8" x 3/4"	50/200
G20138	3/4" x 3/4"	50/200

Hose Barb To Male Hose



PART NO.	HB x MHT	CTN/MSTR
G20040	3/8" x 3/4"	1
G20041	1/2" x 3/4"	50/200
G20042	5/8" x 3/4"	1/200
G20043	3/4" x 3/4"	50/200

Hose Barb To Male Hose - LEAD FREE



PART NO.	HB x MHT	CTN/MSTR
G20141	1/2" x 3/4"	50/200
G20142	5/8" x 3/4"	50/200
G20143	3/4" x 3/4"	50/200

Male Pipe To Female Hose Swivel



PART NO.	MPT x FHT	CTN/MSTR
G20045	1/4" x 3/4"	1
G20047	1/2" x 3/4"	50/200

Hose WYE



PART NO.	DESCRIPTION	CTN/MSTR
G20050	3/4" x 3/4"	20/200

Hose WYE - LEAD FREE



PART NO.	DESCRIPTION	CTN/MSTR
G20150	3/4" x 3/4"	1/100

Garden Hose Shut Off



• Buna-N seals

PART NO.	DESCRIPTION	CTN/MSTR
G20051	Dual shut off/green ABS	100
G20052	Single shut off/green ABS	1/200
G20053	Brass hose with shut off "y"	15/60
G20054	CP die cast with shut off "y"	20/100

Garden Hose Cap



PART NO.	FHT	CTN/MSTR
G20055	3/4"	100/600
G20056	3/4" with chain	1/500

Garden Hose Cap - LEAD FREE



PART NO.	FHT	CTN/MSTR
G20155	3/4" with washer	1/500

Garden Hose Washer



PART NO.	SIZE	CTN/MSTR
G20057	3/4" vinyl	100/5000
G20057R	3/4" red rubber	100/2500

Garden Hose Filter Washer



PART NO.	SIZE	CTN/MSTR
G20060	3/4"	2000

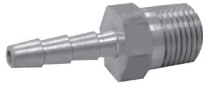
Evaporation Cooler Drain



PART NO.	MHT x FPT	CTN/MSTR
G20006	3/4" x 1/2"	25/200

Hose Barb To Male Pipe

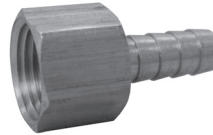
• Barb refers to hose I.D.



PART NO.	BARB x MPT	CTN/MSTR
G25022	1/8" x 1/8"	1
G25032	3/16" x 1/8"	1
G25034	3/16" x 1/4"	1
G25042	1/4" x 1/8"	1
G25044	1/4" x 1/4"	1
G25046	1/4" x 3/8"	1
G25048	1/4" x 1/2"	1
G25052	5/16" x 1/8"	500/1000
G25054	5/16" x 1/4"	1
G25056	5/16" x 3/8"	1
G25062	3/8" x 1/8"	1
G25064	3/8" x 1/4"	1
G25066	3/8" x 3/8"	1
G25068	3/8" x 1/2"	50/500
G25612	3/8" x 3/4"	1
G25084	1/2" x 1/4"	1
G25086	1/2" x 3/8"	1
G25088	1/2" x 1/2"	350
G25812	1/2" x 3/4"	1
G25106	5/8" x 3/8"	250/500
G25108	5/8" x 1/2"	1
G25101	5/8" x 3/4"	1
G25128	3/4" x 1/2"	1
G25121	3/4" x 3/4"	200
G25161	1" x 3/4"	1
G25169	1" x 1"	1

Hose Barb To Female Pipe

• Barb refers to hose I.D.



PART NO.	BARB x FPT	CTN/MSTR
G26022	1/8" x 1/8"	1
G26032	3/16" x 1/8"	1
G26034	3/16" x 1/4"	1
G26042	1/4" x 1/8"	1
G26044	1/4" x 1/4"	1
G26046	1/4" x 3/8"	1
G26052	5/16" x 1/8"	1
G26054	5/16" x 1/4"	1
G26056	5/16" x 3/8"	1
G26062	3/8" x 1/8"	1
G26064	3/8" x 1/4"	1
G26066	3/8" x 3/8"	1
G26068	3/8" x 1/2"	100/200
G26084	1/2" x 1/4"	1
G26086	1/2" x 3/8"	1
G26088	1/2" x 1/2"	1
G26121	3/4" x 3/4"	1
G26161	1" x 3/4"	1

D

Hose Barb To Male Pipe Elbow



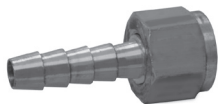
PART NO.	BARB x MPT	CTN/MSTR
G27042	1/4" x 1/8"	1
G27044	1/4" x 1/4"	1
G27054	5/16" x 1/4"	1
G27062	3/8" x 1/8"	1
G27064	3/8" x 1/4"	1
G27066	3/8" x 3/8"	1
G27068	3/8" x 1/2"	1
G27084	1/2" x 1/4"	1
G27086	1/2" x 3/8"	1
G27088	1/2" x 1/2"	1
G27106	5/8" x 3/8"	1
G27108	5/8" x 1/2"	1

Barb To Barb Hose Splicers



PART NO.	BARB	CTN/MSTR
G29003	3/16"	1
G29004	1/4"	1
G29005	5/16"	250/1000
G29006	3/8"	100/800
G29008	1/2"	1
G29010	5/8"	1

Hose Barb To Female Ball End Swivel



PART NO.	BARB x NPSM	CTN/MSTR
G28044	1/4" x 1/4"	1
G28066	3/8" x 3/8"	1
G28088	1/2" x 1/2"	1

Hose Barb Tee



PART NO.	BARB x MPT	CTN/MSTR
G24004	1/4"	1
G24006	3/8"	1

Nylon Hose Barb Splicer



PART NO.	BARB x BARB	CTN/MSTR
N10001	1/8" x 1/8"	10/100
N10002	1/4" x 1/4"	10/100
N10003	5/16" x 5/16"	10/100
N10004	3/8" x 3/8"	10/100
N10005	1/2" x 1/2"	10/100
N10006	5/8" x 5/8"	10/100
N10007	3/4" x 3/4"	10/100
N10008	1" x 1"	5/50

Nylon Hose Barb Tees



PART NO.	BARB x BARB	CTN/MSTR
N11001	1/8" x 1/8" x 1/8"	10/100
N11002	1/4" x 1/4" x 1/4"	10/100
N11003	3/8" x 3/8" x 3/8"	10/100
N11004	1/2" x 1/2" x 3/8"	10/100
N11005	1/2" x 1/2" x 1/2"	10/100
N11006	5/8" x 5/8" x 5/8"	10/100
N11007	3/4" x 3/4" x 3/4"	10/100
N11008	1" x 1" x 1"	5/50

Nylon Hose Barb Elbows



PART NO.	BARB x BARB	CTN/MSTR
N12001	1/4" x 1/4"	10/100
N12002	3/8" x 3/8"	10/100
N12003	1/2" x 1/2"	10/100
N12004	5/8" x 5/8"	10/100
N12005	3/4" x 3/4"	10/100
N12006	1" x 1"	5/50

Nylon Garden Hose Cap



PART NO.	FHT	CTN/MSTR
N06001	3/4"	10/100

Nylon Female Hose Barb Adapter



PART NO.	BARB x FPT	CTN/MSTR
N15001	1/2" x 1/2"	10/100

Nylon Hose Barb Adapter



PART NO.	MPT x BARB	CTN/MSTR
N14001	1/4" x 1/4"	10/100
N14002	1/4" x 3/8"	10/100
N14003	3/8" x 1/4"	10/100
N14004	3/8" x 3/8"	10/100
N14005	3/8" x 1/2"	10/100
N14006	1/2" x 1/4"	10/100
N14007	1/2" x 3/8"	10/100
N14008	1/2" x 1/2"	10/100
N14009	1/2" x 5/8"	10/100
N14010	1/2" x 3/4"	10/100
N14011	3/4" x 3/8"	10/100
N14012	3/4" x 1/2"	10/100
N14013	3/4" x 5/8"	10/100
N14014	3/4" x 3/4"	10/100
N14015	3/4" x 1"	5/50
N14016	1" x 1/2"	5/50
N14017	1" x 5/8"	5/50
N14018	1" x 3/4"	5/50
N14019	1" x 1"	5/50

D

Nylon Male Garden Hose To Female Pipe



PART NO.	MHT x FPT	CTN/MSTR
N18001	3/4" x 1/2"	10/100
N18002	3/4" x 3/4"	10/100

Nylon Male Garden Hose To Male Pipe



PART NO.	MHT x MPT	CTN/MSTR
N09001	3/4" x 1/2"	10/100
N09002	3/4" x 3/4"	10/100

Nylon Female Garden Hose To Female Pipe



PART NO.	FHT x FPT	CTN/MSTR
N07001	3/4" x 1/2"	10/100

Male Insert Adapter



- NSF certified
- For flexible polyethylene plastic pipe

PART NO.	SIZE	CTN/MSTR
I11001	1/2"	10/100
I11002	3/4"	10/100
I11003	1"	10/100
I11004	1 1/4"	10/100
I11005	1 1/2"	10/100
I11006	2"	10/100

Insert Combination Elbow



- NSF certified
- For flexible polyethylene plastic pipe

PART NO.	SIZE	CTN. QTY.
I11025	1/2"	10/100
I11026	3/4"	10/100
I11027	1"	10/100
I11028	1 1/4"	10/100

D

Insert Coupling



- NSF certified
- For flexible polyethylene plastic pipe

PART NO.	SIZE	CTN/MSTR
I11007	1/2"	10/100
I11008	3/4"	10/100
I11009	1"	10/100
I11010	1 1/4"	10/100
I11011	1 1/2"	10/100
I11012	2"	10/100

Insert Elbow



- NSF certified
- For flexible polyethylene plastic pipe

PART NO.	SIZE	CTN/MSTR
I11013	1/2"	10/100
I11014	3/4"	10/100
I11015	1"	10/100
I11016	1 1/4"	10/100
I11017	1 1/2"	10/100
I11018	2"	5/50

Insert Tee



- NSF certified
- For flexible polyethylene plastic pipe

PART NO.	SIZE	CTN/MSTR
I11019	1/2"	10/100
I11020	3/4"	10/100
I11021	1"	10/100
I11022	1 1/4"	10/100
I11023	1 1/2"	10/100
I11024	2"	5/50

Male Insert Adapter



- NSF approved
- For flexible polyethylene plastic pipe

PART NO.	SIZE	CTN/MSTR
I10001	1/2"	10/100
I10002	3/4"	10/250
I10003	1"	10/160
I10004	1-1/4"	10/80
I10005	1-1/2"	5/60
I10006	2"	5/40

Insert Elbow



- NSF approved
- For flexible polyethylene plastic pipe

PART NO.	SIZE	CTN/MSTR
I10023	1/2"	10/300
I10024	3/4"	10/180
I10025	1"	10/100
I10026	1-1/4"	5/60
I10027	1-1/2"	5/40
I10028	2"	5/25

Female Insert Adapter



- NSF approved
- For flexible polyethylene plastic pipe

PART NO.	SIZE	CTN/MSTR
I10007	1/2"	10/400
I10008	3/4"	10/250
I10009	1"	10/160
I10010	1-1/4"	10/80

Insert Tee



- NSF approved
- For flexible polyethylene plastic pipe

PART NO.	SIZE	CTN/MSTR
I10029	1/2"	10/180
I10030	3/4"	10/100
I10031	1"	10/60
I10032	1-1/4"	5/40
I10033	1-1/2"	5/30
I10034	2"	5/15

Insert Coupling



- NSF approved
- For flexible polyethylene plastic pipe

PART NO.	SIZE	CTN/MSTR
I10011	1/2"	10/400
I10012	3/4"	10/250
I10013	1"	10/160
I10014	1-1/4"	10/80
I10015	1-1/2"	5/60
I10016	2"	5/40

Insert x MIP Combination Elbow



- NSF approved
- For flexible polyethylene plastic pipe

PART NO.	SIZE	CTN/MSTR
I10035	1/2"	10/300
I10036	3/4"	10/200
I10037	1"	10/100
I10038	1-1/4"	5/50
I10039	1-1/2"	5/50

Reducing Insert Coupling



- NSF approved
- For flexible polyethylene plastic pipe

PART NO.	SIZE	CTN/MSTR
I10017	3/4" x 1/2"	10/300
I10018	1" x 1/2"	10/220
I10019	1" x 3/4"	10/220
I10020	1-1/4" x 1"	10/100
I10021	1-1/2" x 1-1/4"	5/15
I10022	2" x 1-1/2"	5/15

Insert Reducing Tee



- NSF approved
- For flexible polyethylene plastic pipe

PART NO.	SIZE	CTN/MSTR
I10043	3/4" x 3/4" x 1/2"	1
I10044	3/4" x 1/2" x 1/2"	1
I10045	1" x 1" x 1/2"	1
I10046	1" x 1" x 3/4"	1
I10047	1" x 3/4" x 3/4"	1
I10048	1-1/2" x 1-1/2" x 1"	1
I10049	2" x 2" x 1"	1

Male Insert Reducer



- NSF approved
- For flexible polyethylene plastic pipe

PART NO.	SIZE	CTN/MSTR
I10040	3/4" x 1/2"	10/300
I10041	1" x 3/4"	10/220
I10042	1-1/4" x 1"	10/100

Steel Male Insert Adapter



• For flexible polyethylene plastic pipe

PART NO.	SIZE	CTN/MSTR
I12001	1/2"	25/100
I12002	3/4"	25/100
I12003	1"	20/120
I12004	1-1/4"	20/80
I12005	1-1/2"	10/100
I12006	2"	10/40

D

INSERT FITTINGS VS HOSE BARBS?

Insert Fittings only fit polyethylene plastic pipe (water service pipe).

Hose Barbs are designed to fit the inside diameter of various rubber hose sizes.

Both types of fittings are normally secured with hose gear clamps.

Steel Female Insert Adapter



• For flexible polyethylene plastic pipe

PART NO.	SIZE	CTN/MSTR
I12007	1/2"	1
I12008	3/4"	1
I12009	1"	10/30
I12010	1-1/4"	1
I12011	1-1/2"	10
I12012	2"	1

Steel Insert Coupling



• For flexible polyethylene plastic pipe

PART NO.	SIZE	CTN/MSTR
I12013	1/2"	1
I12014	3/4"	1/25
I12015	1"	1/20
I12016	1-1/4"	1/20
I12017	1-1/2"	10/60
I12018	2"	10

Male Insert Adapter



• For flexible polyethylene plastic pipe

PART NO.	SIZE	CTN/MSTR
I13001	1/2"	10/200
I13002	3/4"	10/200
I13003	1"	10/100
I13004	1 1/4"	10/100
I13005	1 1/2"	10/60
I13006	2"	5/40

Male Insert Reducer



• For flexible polyethylene plastic pipe

PART NO.	INSERT x MPT	CTN/MSTR
I13007	1" x 3/4"	1/100
I13008	1-1/4" x 1"	1/100
I13030	1" x 1 1/4"	10/100

Female Insert Adapter



• For flexible polyethylene plastic pipe

PART NO.	SIZE	CTN/MSTR
I13009	1/2"	10/100
I13010	3/4"	10/100
I13011	1"	1/200
I13012	1 1/4"	1/100
I13013	1 1/2"	1
I13014	2"	5/50

Insert x MIP 90° Elbow



• For flexible polyethylene plastic pipe

PART NO.	INSERT	MIP	CTN/MSTR
I13031	3/4"	3/4"	1/100
I13032	1"	3/4"	1/100
I13033	1"	1"	10/100
I13034	1 1/4"	1 1/4"	1/50

Insert x Sweat Adapters



• For flexible polyethylene plastic pipe

PART NO.	INSERT	SWEAT	CTN/MSTR
I13035	1/2"	1/2"	1
I13036	3/4"	3/4"	10/100
I13037	1"	1"	10/200
I13038	1 1/4"	1-1/4"	1

Insert x FIP Tee



• For flexible polyethylene plastic pipe

PART NO.	INSERT x FIP TEE	CTN/MSTR
I13039	1/2" x 1/2"	1
I13040	3/4" x 3/4"	1
I13041	1" x 1"	1
I13042	1 1/4" x 1 1/4"	1/10

Insert Coupling



• For flexible polyethylene plastic pipe

PART NO.	SIZE	CTN/MSTR
I13015	1/2"	1
I13016	3/4"	1/100
I13017	1"	1/100
I13018	1 1/4"	1/100
I13019	1 1/2"	1/100
I13020	2"	10/100

Insert Tee



• For flexible polyethylene plastic pipe

PART NO.	SIZE	CTN/MSTR
I13021	3/4"	1/100
I13022	1"	1/100
I13023	1 1/4"	10/50

Insert Elbow



• For flexible polyethylene plastic pipe

PART NO.	SIZE	CTN/MSTR
I13024	3/4"	1/100
I13025	1"	1/100
I13026	1 1/4"	1/50

Insert Male Rope Adapter



• For flexible polyethylene plastic pipe

PART NO.	SIZE	CTN/MSTR
I13027	1"	1/100
I13028	1 1/4"	1
I13029	1" x 1 1/4"	1/100

Straight Needle Valve



PART NO.	FLARE x FLARE	CTN/MSTR
N10244	1/4" x 1/4"	1
N10266	3/8" x 3/8"	1

Angle Compression Needle Valve

D



PART NO.	COMP x MIP	CTN/MSTR
N10442	1/4" x 1/8"	50/500
N10444	1/4" x 1/4"	1
N10464	3/8" x 1/4"	1

Straight Compression Needle Valve



PART NO.	COMP x COMP	CTN/MSTR
N10544	1/4" x 1/4"	150/300
N10566	3/8" x 3/8"	25/250

Straight Compression Needle Valve

• N10642 is Lead Free



PART NO.	COMP x MIP	CTN/MSTR
N10642	1/4" x 1/8"	50/500
N10644	1/4" x 1/4"	25
N10664	3/8" x 1/4"	1

Pipe Needle Valves



PART NO.	FIP x FIP	CTN/MSTR
N10944	1/4" x 1/4"	1

Needle Valve Tee Kit



PART NO.	COMP x COMP	CTN/MSTR
N78064	3/8" x 1/4"	1

Brass Saddle Clamp



- Fits up to 3/4" iron pipe
- Fits up to 1" hard copper
- Unassembled

PART NO.	FPT	CTN/MSTR
N01038	1/8"	1

Brass Saddle Clamp With Valve



- Fits up to 3/4" iron pipe
- Fits up to 1" hard copper
- Unassembled

PART NO.	OD	CTN/MSTR
N01039	1/4"	1

Self Piercing Valve



- 1/4" OD compression outlet
- Fits 3/8" to 1.315" OD tube
- Lead Free

PART NO.	TUBE SIZE	CTN/MSTR
S92001	1/4"	50/100

Ikemaker Or Humidifier Kit



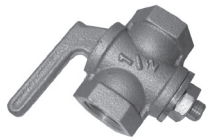
- 1/4" tubing
- Self piercing valve
- Brass fittings
- Lead Free

PART NO.	TUBE SIZE	CTN/MSTR
S92025	1/4" x 25' poly tubing	1/10
S92030	1/4" x 25' copper tubing	1/10
S92031	1/4" x 15' copper tubing	1/10

Gas Shut-Off Valve

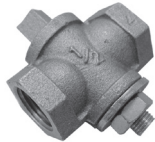
- Rated at 2 PSIG
- Cast bronze plug style

MADE IN THE
USA



Lever Handle

Part No.	Size	Qty
G17025	1/4"	25
G17037	3/8"	1
G17050	1/2"	1
G17075	3/4"	1
G17100	1"	1
G17125	1-1/4"	1
G17150	1-1/2"	10
G17200	2"	5



Square Head

Part No.	Size	Qty
G18025	1/4"	1
G18037	3/8"	1
G18050	1/2" AGA	50
G18075	3/4" AGA	50
G18100	1"	25
G18125	1-1/4"	1
G18150	1-1/2"	10
G18200	2"	5



Flat/Tee Head

Part No.	Size	Qty
G19025	1/4"	1
G19037	3/8"	1
G19050	1/2" AGA	50
G19075	3/4" AGA	1
G19100	1"	25
G19125	1-1/4"	15
G19150	1-1/2"	10
G19200	2"	5

Flare x Flare



• 30 PSI

PART NO.	SIZE	CTN/MSTR
N01014	3/8"	1

Female Pipe x Female Pipe



• 30 PSI

PART NO.	SIZE	CTN/MSTR
N01010	1/8"	1
N01011	1/4"	1

Female Pipe x Male Pipe



• 30 PSI

PART NO.	SIZE	CTN/MSTR
N01027	1/8"	1
N01028	1/4"	1
N01029	3/8"	1

D

Drain Cock Tee Handle w/Bibb



• Hose x Male IPT

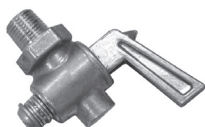
PART NO.	SIZE	CTN/MSTR
N01032	1/4"	100/500

Drain Cock External Seat



PART NO.	SIZE	CTN/MSTR
N01033	1/8"	1
N01034	1/4"	200/1000
N01035	3/8"	5/200

Drain Cock



PART NO.	SIZE	CTN/MSTR
N01001	1/8"	1
N01002	1/4"	1

Satin Brass Air Cock Female x Male Lever Handle Hex Shoulder



• Spring Bottoms

PART NO.	SIZE	CTN/MSTR
A11011	1/8" x 1/8"	1/100
A11001	1/4" x 1/4"	100/200

Satin Brass Air Cock Male x Spigot Tee Handle Hex Shoulder



• Spring Bottoms

PART NO.	SIZE	CTN/MSTR
A11002	1/4" x spigot	100/200

Satin Brass Air Cock Female x Male Tee Handle Hex Shoulder



• Spring Bottoms

PART NO.	SIZE	CTN/MSTR
A11003	1/4" x 1/4"	1/200

Satin Brass Air Cock Female x Female Lever Handle Round Shoulder



• Spring Bottoms

PART NO.	SIZE	CTN/MSTR
A11004	1/4" x 1/4"	1/100

Satin Brass Air Cock Female x Female Tee Handle Hex Shoulder



• Spring Bottoms

PART NO.	SIZE	CTN/MSTR
A11005	1/4" x 1/4"	1/200

Satin Brass Air Cock Female x Female Tee Handle Round Shoulder



• Spring Bottoms

PART NO.	SIZE	CTN/MSTR
A11016	1/8" x 1/8"	1/50
A11006	1/4" x 1/4"	100/200

Satin Brass Air Cock Female x Female Lever Handle Hex Shoulder



• Spring Bottoms

PART NO.	SIZE	CTN/MSTR
A11017	1/8" x 1/8"	1/100
A11007	1/4" x 1/4"	1/100

Satin Brass Air Cock Female x Male Tee Handle Round Shoulder



• Spring Bottoms

PART NO.	SIZE	CTN/MSTR
A11008	1/4" x 1/4"	100/200

Gas Ball Valves

- CSA- certified for use with natural, manufactured, mixed, liquefied petroleum and LP gas/air mixtures up to 2 psig
- UL listed 757x (1/2" and 3/4")
- Forged brass body
- Chrome plated brass ball
- Temperatures up to 175°F
- Threaded ends comply with ANSI B2.1
- 3/8"x 3/4" one piece body
- 1"-2" two-piece body with plated steel handle
- Made in Italy



Lever Handle, Female x Female



PART NO.	SIZE	CTN/MSTR
B64375	3/8" FIP	10/100
B64050	1/2" FIP	10/100
B64075	3/4" FIP	10/100
B64100	1" FIP	6/36
B64125	1 1/4" FIP	4/24
B64150	1 1/2" FIP	4/16
B64200	2" FIP	2/10

Tee Handle, Female x Female



PART NO.	SIZE	CTN/MSTR
B65375	3/8" FIP	10/100
B65050	3/8" FIP	10/100
B65075	3/4" FIP	10/100
B65100	1" FIP	6/36

Square Head, Female x Female



PART NO.	SIZE	CTN/MSTR
B66375	3/8" FIP	10/100
B66050	1/2" FIP	10/100
B66075	3/4" FIP	10/100
B66100	1" FIP	6/36

Two-Piece Gas Ball Valves

- CSA- certified for use with natural, manufactured, mixed liquefied petroleum and L.P. gas/air mixtures up to 2 psig
- Forged brass body
- Chrome plated brass ball
- Temperatures up to 125°F
- Two-piece body
- Made in Italy



PART NO.	SIZE	CTN/MSTR
B64450	1/2"	10/50
B64475	3/4"	10/50

Texas Pattern Gas Ball Valve

- CSA certified
- Female IPS x hose end x 1/8" MIP
- Lever handle
- One piece forged body
- Made in Italy



PART NO.	SIZE	CTN/MSTR
B69121	1/2" FIP x 1/8" MIP	10/100

Lever Handle Gas Ball Valves

- Forged brass body
- 3/4" Chrome plated forged brass ball
- Temperatures up to 175°F
- Threaded ends comply with ANSI B2.1
- CSA- certified for use with natural, manufactured, mixed, liquefied petroleum and LP gas/air mixtures up to 2 psig
- One piece body construction
- Made in Italy



Flare x Female



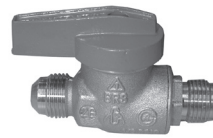
PART NO.	SIZE	CTN/MSTR
B67375	3/8" flare x 1/2" FIP	10/100
B67050	1/2" flare x 1/2" FIP	10/100
B67937	15/16" flare x 1/2" FIP	10/100
B67975	15/16" flare x 3/4" FIP	10/100

Flare x Male



PART NO.	SIZE	CTN/MSTR
B68001	1/2" flare x 1/2" MIP	10/100

Flare x Flare



PART NO.	SIZE	CTN/MSTR
B68375	3/8" flare x 3/8" flare	10/100
B68050	1/2" flare x 1/2" flare	10/100
B68058	5/8" flare x 5/8" flare	10/100

Gas Heater Valves

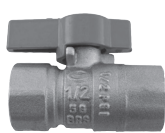
- 9/16" - 24 Fine Thread Flare (for 3/8" tube)
- Forged brass body
- Chrome plated forged brass ball
- CSA certified for use with natural, manufactured, mixed, liquefied petroleum and LP gas/air mixtures up to 2 psig
- One piece body construction
- Temperatures up to 175°F
- Made in Italy



PART NO.	SIZE	CTN/MSTR
B69050	9/16"-24 x 1/2" FIP	10/100

Brass Gas Ball Valves

- Two-piece forged brass body with chrome plated brass ball
- Double O-ring packing
- PTFE Seats
- 1/4 turn aluminum handle
- 1/2 PSI for indoor appliance connections per ANSI Z21.15/CGA 9.1
- Blowout-proof stem
- 5 PSI for indoor shutoff per CGA 91-002 & ASME B16.44
- CUS certified



Female x Female		
PART NO.	SIZE	CTN/MSTR
B67100	1/2" FIP x 1/2" FIP	1/160
B67101	3/4" FIP x 3/4" FIP	1/100

- Two-piece forged brass body with chrome plated brass ball
- Double O-ring packing
- PTFE Seats
- 1/4 turn aluminum handle
- 1/2 PSI for indoor appliance connections per ANSI Z21.15/CGA 9.1
- 5 PSI for indoor shutoff per CGA 91-002 & ASME B16.44
- CUS certified



Flare x Female		
PART NO.	SIZE	CTN/MSTR
B67102	3/8" FL x 1/2" FIP	1/160
B67103	1/2" FL x 1/2" FIP	1/160

Flare x Male		
PART NO.	SIZE	CTN/MSTR
B67104	1/2" FL x 1/2" MIP	1/160

Flare		
PART NO.	SIZE	CTN/MSTR
B67105	3/8" FL x 3/8" FL	1/160
B67106	1/2" FL x 1/2" FL	1/160

- Full-port design
- Forged brass body up to 4"
- Chrome plated brass ball
- Adjustable packing nut
- Non-sticking teflon seats
- 1/4 turn zinc plated steel handle
- 600psi, WOG (water, oil, gas)
- Working steam pressure: 150psi
- Blowout-proof stem
- Teflon packing for safety against leakage
- CUS / FM / NSF61 / UL certified



Threaded		
PART NO.	SIZE	CTN/MSTR
B67200	3/8"	20/100
B67201	1/2"	50/100
B67202	3/4"	30/60
B67203	1"	20/40
B67204	1-1/4"	12/24
B67205	1-1/2"	9/18
B67206	2"	6/12

- Full-port design
- Forged brass body up to 4"
- Chrome plated brass ball
- Adjustable packing nut
- Non-sticking teflon seats
- 1/4 turn zinc plated steel handle
- 600psi, WOG (water, oil, gas)
- Working steam pressure: 150psi
- Blowout-proof stem
- Teflon packing for safety against leakage
- FM / NSF61 / UL certified



Sweat		
PART NO.	SIZE	CTN/MSTR
B67207	3/8"	20/100
B67208	1/2"	50/100
B67209	3/4"	30/60
B67210	1"	20/40
B67211	1-1/4"	12/24
B67212	1-1/2"	9/18
B67213	2"	6/12

- Full-port with waste design
- Forged brass body
- Chrome plated brass ball
- Adjustable packing nut
- Non-sticking teflon seats
- 1/4 turn zinc plated steel handle
- 600psi, WOG (water, oil, gas)
- Working steam pressure: 150psi
- Blowout-proof stem
- Teflon packing for safety against leakage
- NSF61 certified



Brass Ball & Waste Valve Sweat		
PART NO.	SIZE	CTN/MSTR
B67214	1/2"	10/60
B67215	3/4"	10/60
B67216	1"	5/40



Brass Ball & Waste Valve Threaded		
PART NO.	SIZE	CTN/MSTR
B67217	1/2"	10/60
B67218	3/4"	10/60
B67219	1"	5/40

- Cast brass body
- Cast iron handle
- 125 PSI WOG to 100° F
- Maximum Temperature 180°F



Brass Stop Valve Threaded		
PART NO.	SIZE	CTN/MSTR
B67312	1/2"	6/48
B67313	3/4"	6/48



Brass Stop & Waste Valve Threaded		
PART NO.	SIZE	CTN/MSTR
B67315	3/4"	6/48



Brass Stop Valve Sweat		
PART NO.	SIZE	CTN/MSTR
B67316	1/2"	6/48
B67317	3/4"	6/48

- Forged brass body
- Copper or threads to hose
- Cast iron handle
- Non-sticking teflon seats
- 125 PSI WOG to 100°F
- Maximum Temperature 180°F
- Size range- 1/2" MIP (1/2" SWEAT) 3/4"MHT 3/4"MIP (1/2" SWEAT) 3/4"MHT



Brass Broiler Drain Valve - Male		
PART NO.	SIZE	CTN/MSTR
B67320	1/2" MIP x 3/4" MHT	6/48
B67321	3/4" MIP x 3/4" MHT	6/48

- Forged brass body
- Threads to hose
- Cast iron handle
- 125 PSI WOG to 100°F
- Maximum Temperature 180°F
- Size range- 1/2" FIP * 3/4"MHT



Brass Broiler Drain Valve - Female		
PART NO.	SIZE	CTN/MSTR
B67322	1/2" FIP x 3/4" MHT	6/48
B67323	3/4" FIP x 3/4" MHT	6/48

Full Port Ball Valves

600# WOG/ 125# WSP

- Forged brass
- Chrome plated ball
- Teflon seats
- Blowout-proof stem
- Vinyl grip and vibration-proof locknut
- Temperature range: -20°F to 350°F (call for pressure rating when temperature is above 210°F)
- CSA- certified (1/2"-2") for use with natural, manufactured, mixed, liquefied petroleum and LP gas/air mixtures up to 2 psi
- Complies with Federal Specification WW-V-35B, Type II, Style 3
- Threaded ends comply with ANSI B2.1
- Solder ends comply with ANSI B16.18
- Made in Italy



Threaded Ends



PART NO.	SIZE	PORT	CTN/MSTR
B60025	1/4"	0.315	20/200
B60375	3/8"	0.394	10/100
B60050	1/2"	0.590	10/100
B60075	3/4"	0.787	10/100
B60100	1"	0.984	10/50
B60125	1 1/4"	1.260	10/20
B60150	1 1/2"	1.575	4/20
B60200	2"	1.968	4/20
B60250	2 1/2"	2.283	2/6
B60300	3"	2.677	2/2
B60400	4"	3.543	1/2

Solder Ends



PART NO.	SIZE	PORT	CTN/MSTR
B61050	1/2"	0.590	10/100
B61075	3/4"	0.787	5/60
B61100	1"	0.984	6/36
B61125	1 1/4"	1.260	4/24
B61150	1 1/2"	1.575	4/16
B61200	2"	1.968	2/10

Threaded Ends With 1/8" Waste



PART NO.	SIZE	PORT	CTN/MSTR
B60650	1/2"	0.590	10/100
B60675	3/4"	0.787	10/100
B60610	1"	0.984	10/100

Solder Ends With 1/8" Waste



PART NO.	SIZE	PORT	CTN/MSTR
B60750	1/2"	0.590	10/100
B60775	3/4"	0.787	10/100
B60710	1"	0.984	10/100

PVC Ball Valves Solvent End

- One piece body construction
- Standard port
- EPDM seats and o-rings
- Working pressure 150 psi at 73°F
- Quarter turn operation
- Not for compressed air
- Ideal for swimming pools, irrigation and water supply uses
- Solvent ends comply with ASTM D 2466
- Threaded ends comply with ANSI B2.1
- For cold water lines
- Large flow opening



PART NO.	SIZE	CTN/MSTR
B90050	1/2"	1/162
B90075	3/4"	1/80
B90100	1"	1/84
B90125	1 1/4"	1/50
B90150	1 1/2"	1/50
B90200	2"	1/24
B90250	2 1/2"	1/15
B90300	3"	1/2
B90400	4"	1/1

PVC Ball Valves Threaded Ends

- One piece body construction
- Standard port
- EPDM seats and o-rings
- Working pressure 150 psi at 73°F
- Quarter turn operation
- Not for compressed air
- Ideal for swimming pools, irrigation and water supply uses
- Solvent ends comply with ASTM D 2466
- Threaded ends comply with ANSI B2.1
- For cold water lines
- Large flow opening



PART NO.	SIZE	CTN/MSTR
B91050	1/2"	1/162
B91075	3/4"	25/100
B91100	1"	1/84
B91125	1 1/4"	1/60
B91150	1 1/2"	1/40
B91200	2"	6/24
B91250	2 1/2"	1/16
B91300	3"	1/10
B91400	4"	1/1

CPVC Ball Valves

- NSF approved!
- Standard port
- For use on CPVC tubing size (OD)
- Teflon seats
- EPDM o-rings
- One piece body construction
- Large flow opening
- For hot or cold water lines up to 100 psi at temperature up to 180°F
- Solvent ends comply with ASTM D2846
- Quarter turn operation



PART NO.	SIZE	CTN/MSTR
B92050	1/2" (5/8" OD)	10/100
B92075	3/4" (7/8" OD)	10/100

Radiator Coin Key Air Valve And Key

• CARTON QUANTITY ONLY



PART NO.	DESCRIPTION	CTN/MSTR
R20001	Vent valve with key	1/100
R20002	Key only	100/5000
R20003	Valve only	100/1000

Single Union PVC Swimming Pool Valves



- Teflon seats
- 150 psi working pressure
- EPDM o-rings seal on union end
- Suitable for swimming pools, spas and plumbing
- Full port
- Solvent ends

PART NO.	SIZE	CTN/MSTR
B95150	1-1/2"	8/32
B95200	2"	5/20

Inline PVC Check Valves



- Stainless steel spring
- EPDM seats
- Maintenance-free operation
- .5 psi required to open unit
- 200 psi static pressure rating at 77°F
- Use anywhere to stop backflow and siphoning
 - Swimming Pools - Hot Tubs - Spas
 - Solar Installations

Solvent Ends

PART NO.	SIZE	CTN/MSTR
C30050	1/2"	30/120
C30075	3/4"	30/120
C30100	1"	16/64
C30125	1-1/4"	12/48
C30150	1-1/2"	1/32
C30200	2"	4/16

Threaded Ends



PART NO.	SIZE	CTN/MSTR
C31050	1/2"	30/120
C31075	3/4"	30/120
C31100	1"	16/64
C31125	1-1/4"	12/48
C31150	1-1/2"	6/32
C31200	2"	4/16

D

Dual Check Backflow Preventer



- Female by female
- Forged brass body
- 150 psi
- Acetyl-resin check modules
- Stainless steel spring
- 180° F maximum temperature

PART NO.	SIZE	CTN/MSTR
B59001	3/4"	1/100
B59002	1"	1/25

Forged Brass Hose Bibb



- Hard chrome ball
- Quarter-turn operation
- Teflon seats
- T-handle

PART NO.	SIZE	CTN/MSTR
B60950	1/2"	10/100
B60975	3/4"	10/100

Cast Brass Hose Bibb



PART NO.	MIP x MALE HOSE	CTN/MSTR
B59050	1/2" x 3/4"	10/100
B59075	3/4" x 3/4"	10/100
B59100	1" x 1"	6/72

Hose Bibb Reducer



- Reduces 1" hose bibb to standard 3/4" garden hose

PART NO.	FHT x MHT	CTN/MSTR
G20058	1" x 3/4"	1

Hose Bibb Vacuum Breaker



- 3/4" hose thread
- Vandal-proof breakoff screw
- Brass
- ASSE 1011

PART NO.	DESCRIPTION	CTN/MSTR
G04003	Vacuum breaker	20/200

Economy Hose Bibb Vacuum Breaker



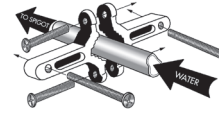
- Brass
- 3/4" hose thread

PART NO.	DESCRIPTION	CTN/MSTR
G04004	Economy Vacuum Breaker	20/200

Hose Faucet Anchor



- Long lasting solution to loosen exterior faucets
- Works with any wall material (brick, concrete, vinyl siding or stucco)
- For repair or new home applications
- Fits all exterior or faucet water lines
- Corrosion free



PART NO.	DESCRIPTION	CTN/MSTR
B59000	Hose faucet anchor	1/100

D

Micro Size

MADE IN THE
USA

• CARTON QUANTITY ONLY
• 5/16" band

Part Stainless



PART NO.	TRADE SIZE	SIZE	CTN/MSTR
G08004	4	1/4" - 5/8"	10/1000
G08006	6	5/16" - 7/8"	10/1000
G08008	8	3/8" - 1"	10/500
G08012	12	1/2" - 1 1/4"	10/500
G08016	16	1/2" - 1 1/2"	10/500
G08020	20	3/4" - 1 3/4"	10/500
G08024	24	1" - 2"	10/500

All Stainless



PART NO.	TRADE SIZE	SIZE	CTN/MSTR
G09004	4	1/4" - 5/8"	10/1000
G09006	6	5/16" - 7/8"	10/1000
G09008	8	1/2" - 1"	10/500
G09012	12	1/2" - 1 1/4"	10/500
G09016	16	1/2" - 1 1/2"	10/500
G09020	20	3/4" - 1 3/4"	10/500
G09024	24	1" - 2"	10/500

Full Size

MADE IN THE
USA

• CARTON QUANTITY ONLY
• 1/2" band

Part Stainless



PART NO.	TRADE SIZE	SIZE	CTN/MSTR
G10006	6	3/8" - 7/8"	10/200
G10008	8	7/16" - 1"	10/200
G10010	10	1/2" - 1 1/16"	10/500
G10012	12	1/2" - 1 1/4"	10/500
G10016	16	3/4" - 1 1/2"	10/500
G10020	20	3/4" - 1 3/4"	10/500
G10024	24	1" - 2"	10/500
G10032	32	1 1/2" - 2 1/2"	10/500
G10036	36	7/8" - 2 3/4"	10/500
G10040	40	1 1/8" - 3"	10/200
G10052	52	1 7/8" - 3 3/4"	10/100
G10072	72	3 1/8" - 5"	10/100
G10080	80	3 5/8" - 5 1/2"	10/100
G10104	104	5" - 7"	10/100

All Stainless



PART NO.	TRADE SIZE	SIZE	CTN/MSTR
G11006	6	3/8" - 7/8"	10/200
G11008	8	7/16" - 1"	10/200
G11010	10	1/2" - 1 1/16"	10/500
G11012	12	1/2" - 1 1/4"	10/500
G11016	16	11/16" - 1 1/2"	10/500
G11020	20	3/4" - 1 3/4"	10/500
G11024	24	1" - 2"	10/500
G11028	28	1 5/16" - 2 1/4"	10/500
G11032	32	1 9/16" - 2 1/2"	10/500
G11036	36	7/8" - 2 3/4"	10/500
G11040	40	1 1/8" - 3"	10/200
G11044	44	2 1/4" - 3 1/4"	10/200
G11048	48	1 5/8" - 3 1/2"	10/200
G11052	52	1 7/8" - 3 3/4"	10/200
G11056	56	2 1/8" - 4"	10/100
G11064	64	2 1/2" - 4 1/2"	10/100
G11072	72	3" - 5"	10/100
G11080	80	3 1/2" - 5 1/2"	10/100
G11088	88	4" - 6"	10/100
G11096	96	4 3/4" - 6 1/2"	10/100
G11104	104	5" - 7"	10/100

"68" Series Stainless Gear Clamps

- 9/16" band
- All stainless, 300 grade construction
- Ideal for well drilling and applications requiring marine grade stainless clamps
- CARTON QUANTITY ONLY

MADE IN THE
USA



PART NO.	TRADE SIZE	SIZE	CTN/MSTR
G14006	6	3/8" - 7/8"	10/200
G14008	8	7/16" - 1"	10/200
G14010	10	1/2" - 1 1/16"	10/500
G14012	12	1/2" - 1 1/4"	10/500
G14016	16	11/16" - 1 1/2"	10/500
G14020	20	3/4" - 1 3/4"	10/500
G14024	24	1" - 2"	10/500
G14028	28	1 1/4" - 2 1/4"	10/500
G14032	32	1 1/2" - 2 1/2"	10/500
G14036	36	1 3/4" - 2 3/4"	10/200
G14040	40	1 1/8" - 3"	10/200
G14044	44	2 1/4" - 3 1/4"	10/200
G14048	48	1 5/8" - 3 1/2"	10/200
G14052	52	1 7/8" - 3 3/4"	10/100
G14056	56	2 1/8" - 4"	10/100
G14064	64	2 1/2" - 4 1/2"	10/100
G14072	72	3" - 5"	10/100
G14080	80	3 1/2" - 5 1/2"	10/100
G14088	88	4" - 6"	10/100
G14096	96	4 1/2" - 6 1/2"	10/100
G14104	104	5" - 7"	10/100

Stainless Steel Gear Clamps

- All stainless
- Hanging bag
- CARTON QUANTITY ONLY



PART NO.	TRADE SIZE	SIZE	CTN/MSTR
G16008	8	7/16" - 1"	100/1000
G16010	10	1/2" - 1 1/16"	100/1000
G16012	12	1/2" - 1 1/4"	100/1000
G16016	16	11/16" - 1 1/2"	100/1000
G16020	20	3/4" - 1 3/4"	100/1000
G16024	24	1" - 2"	1
G16028	28	1 1/4" - 2 1/4"	100/1000
G16032	32	1 1/2" - 2 1/2"	100/1000
G16036	36	1 3/4" - 2 3/4"	100/1000
G16040	40	1 1/8" - 3"	100/500
G16044	44	2 1/4" - 3 1/4"	100/500
G16048	48	1 5/8" - 3 1/2"	100/500
G16052	52	1 7/8" - 3 3/4"	100/500
G16056	56	2 1/8" - 4"	100/500
G16064	64	2 1/2" - 4 1/2"	100/500
G16072	72	3" - 5"	1
G16080	80	3 1/2" - 5 1/2"	50/200
G16088	88	4" - 6"	50/250
G16096	96	4 1/2" - 6 1/2"	50
G16104	104	5" - 7"	50/250

D

Replacement Clamp For Flexible Couplings

- CARTON QUANTITY ONLY

MADE IN THE
USA



PART NO.	DESCRIPTION	CTN/MSTR
G15002	2" Replacement clamp	10
G15003	3" Replacement clamp	10
G15004	4" Replacement clamp	10/100
G15006	6" Replacement clamp	1
G15008	8" Replacement clamp	1

Asbestos- Free Full Face Gasket



- Meets ASTM F152, F36A and F146
- Manufactured of Garlock 4401
- 1/16" thick
- Temperature rating of 750°F

PART NO.	SIZE	LBS.
G54075	3/4"	150
G54001	1"	150
G54013	1 1/4"	150
G54015	1 1/2"	150
G54002	2"	150
G54025	2 1/2"	150
G54003	3"	150
G54035	3 1/2"	150
G54004	4"	150
G54005	5"	150
G54006	6"	150
G54008	8"	150
G54010	10"	150
G54012	12"	150

Red Rubber Full Face Gasket



- Meets ASTM D1330
- 1/16" thick
- Temperature rating of 350° F

PART NO.	SIZE	LBS.
G51050	1/2"	150
G51075	3/4"	150
G51001	1"	150
G51013	1 1/4"	150
G51015	1 1/2"	150
G51002	2"	150
G51025	2 1/2"	150
G51003	3"	150
G51035	3 1/2"	150
G51004	4"	150
G51005	5"	150
G51006	6"	150
G51008	8"	150
G51010	10"	150
G51012	12"	150

D

Asbestos- Free Ring Gasket



- Meets ASTM F152, F36A and F146
- Manufactured of Garlock 4401
- 1/16" thick
- Temperature rating of 750°F

PART NO.	SIZE	LBS.
G53050	1/2"	150
G53075	3/4"	150
G53001	1"	150
G53013	1 1/4"	150
G53015	1 1/2"	150
G53002	2"	150
G53025	2 1/2"	150
G53003	3"	150
G53035	3 1/2"	150
G53004	4"	150
G53005	5"	150
G53006	6"	150
G53008	8"	150
G53010	10"	150
G53012	12"	150

Red Rubber Ring Gasket



- Meets ASTM D1330
- 1/16" thick
- Temperature rating of 350° F

PART NO.	SIZE	LBS.
G52075	3/4"	150
G52001	1"	150
G52013	1 1/4"	150
G52015	1 1/2"	150
G52002	2"	150
G52025	2 1/2"	150
G52003	3"	150
G52035	3 1/2"	150
G52004	4"	150
G52005	5"	150
G52006	6"	150
G52008	8"	150
G52010	10"	150
G52012	12"	150

Asbestos- Free Full Face Gasket



- Meets ASTM F152, F36A and F146
- Gaskets are 1/16" thick
- ASTM A307 hex bolts and heavy hex nuts
- Constructed of Garlock 4401

PART NO.	PIPE SIZE	BOLT SIZE	BOLTS/ KIT
G54115	1-1/2"	1/2" x 2-1/4"	4
G54102	2"	5/8" x 2-3/4"	4
G54125	2-1/2"	5/8" x 3"	4
G54103	3"	5/8" x 3"	4
G54104	4"	5/8" x 3"	8
G54105	5"	3/4" x 3-1/4"	8
G54106	6"	3/4" x 3-1/4"	8
G54108	8"	3/4" x 3-1/2"	8
G54110	10"	7/8" x 3-3/4"	12
G54112	12"	7/8" x 4"	12

Red Rubber Ring Gasket Kits



- Meets ASTM D1330
- Gaskets are 1/16" thick
- ASTM A307 hex bolts and heavy hex nuts

PART NO.	PIPE SIZE	BOLT SIZE	BOLTS/ KIT
G52115	1-1/2"	1/2" x 2-1/4"	4
G52102	2"	5/8" x 2-3/4"	4
G52125	2-1/2"	5/8" x 3"	4
G52103	3"	5/8" x 3"	4
G52104	4"	5/8" x 3"	8
G52105	5"	3/4" x 3-1/4"	8
G52106	6"	3/4" x 3-1/4"	8
G52108	8"	3/4" x 3-1/2"	8
G52110	10"	7/8" x 3-3/4"	12

Asbestos- Free Ring Gasket Kits



- Meets ASTM F152, F36A and F146
- Gaskets are 1/16" thick
- ASTM A307 hex bolts and heavy hex nuts
- Constructed of Garlock 4401

PART NO.	PIPE SIZE	BOLT SIZE	BOLTS/ KIT
G53101	1"	1/2" x 2"	4
G53113	1-1/4"	1/2" x 2-1/4"	4
G53115	1-1/2"	1/2" x 2-1/4"	4
G53102	2"	5/8" x 2-3/4"	4
G53125	2-1/2"	5/8" x 3"	4
G53103	3"	5/8" x 3"	4
G53104	4"	5/8" x 3"	8
G53105	5"	3/4" x 3-1/4"	8
G53106	6"	3/4" x 3-1/4"	8
G53108	8"	3/4" x 3-1/2"	8
G53110	10"	7/8" x 3-3/4"	12

Insulation Kits With Poly Sleeves



- Use with flange connection kits
- To form dielectric connection; fiber washers

PART NO.	DESCRIPTION	CTN. QTY.
G55150	1-1/2" Insulation kit	1
G55200	2" Insulation kit	1
G55250	2-1/2" Insulation kit	1
G55300	3" Insulation kit	1
G55350	4" Insulation kit	1
G55400	5" Insulation kit	1
G55450	6" Insulation kit	1
G55500	8" Insulation kit	1
G55550	10" Insulation kit	1
G55600	12" Insulation kit	1

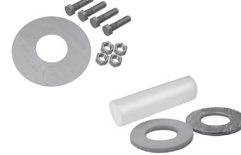
Red Rubber Full Face Gasket Kits



- Meets ASTM D1330
- Gaskets are 1/16" thick
- ASTM A307 hex bolts and heavy hex nuts

PART NO.	PIPE SIZE	BOLT SIZE	BOLTS/ KIT
G51102	2"	5/8" x 2-3/4"	4
G51125	2-1/2"	5/8" x 3"	4
G51103	3"	5/8" x 3"	4
G51135	3-1/2"	5/8" x 3"	8
G51104	4"	5/8" x 3"	8
G51105	5"	3/4" x 3-1/4"	8
G51106	6"	3/4" x 3-1/4"	8
G51108	8"	3/4" x 3-1/2"	8
G51110	10"	7/8" x 3-3/4"	12
G51112	12"	7/8" x 4"	12

Asbestos-Free Ring Gasket Kits Supplied w/Insulation Kits



PART NO.	PIPE SIZE	BOLT SIZE	BOLTS/ KIT
G53203	3"	5/8" x 3"	4
G53204	4"	5/8" x 3"	8
G53206	6"	3/4" x 3 1/4"	8
G53215	1 1/2"	1/2" x 2 1/4"	4
G53225	2 1/2"	5/8" x 3"	4

Asbestos-Free Full Face Gasket Kits Supplied w/Insulation Kits



PART NO.	PIPE SIZE	BOLT SIZE	BOLTS/ KIT
G54215	1-1/2"	1/2" x 2-1/4"	4
G54202	2"	5/8" x 2-3/4"	4
G54225	2-1/2"	5/8" x 3"	4
G54203	3"	5/8" x 3"	4
G54204	4"	5/8" x 3"	8
G54205	5"	3/4" x 3-1/4"	8
G54206	6"	3/4" x 3-1/4"	8
G54208	8"	3/4" x 3-1/2"	8
G54210	10"	7/8" x 3-3/4"	12
G54212	12"	7/8" x 4"	12

Red Rubber Sheet Packing/Gasket Material

- Priced per roll (approximately 100 pounds)
- FULL ROLLS ONLY



PART NO.	DESCRIPTION	CTN QTY
G55016	1/16"x 36"x 60'	1 roll
G55018	1/8"x 36"x 30'	1 roll
G55014	1/4"x 36"x 15'	1 roll

D

Red Rubber Sheet Packing/Gasket Material



- Single 3'x 5' sheet

PART NO.	MATERIAL	THICKNESS	CTN QTY
G55116	Red Rubber (1 sheet)	1/16"	1 roll/
G55118	Red Rubber (1 sheet)	1/8"	1 roll

Gasket And Washer Materials



- Make your own gaskets and washers
- 6"x 6" square in hanging display bag

PART NO.	MATERIAL	THICKNESS	CTN QTY
G55001	Red Rubber (1 sheet)	1/16"	1
G55002	Black Fiber (1 sheet)	1/32"	1
G55003	Cork/Rubber (1 sheet)	1/16"	1
G55004	Combo (1 sheet of each)	—	1

Circulator Flange Gasket Pair

- SOLD IN PAIRS ONLY



PART NO.	DESCRIPTION	CTN QTY
G55005	Circulator Flange Gasket	1

Water Hammer Arresters

- Maximum working temp: 250°F
- Maximum working pressure: 300psi
- Burst pressure: 2900psi
- Polly Bagged



FIXTURE	TYPE OF SUPPLY CONTROL	PUBLIC			PRIVATE		
		TOTAL	C.W.	H.W.	TOTAL	C.W.	H.W.
Water Closet	Flush Valve	10	10	--	6	6	--
Water Closet	Flush Tank	5	5	--	3	3	--
Pedestal Urinal	Flush Valve	10	10	--	--	--	--
Stall or Wall Unit	Flush Valve	5	5	--	--	--	--
Stall or Wall Unit	Flush Tank	3	3	--	--	--	1
Lavatory	Faucet	2	1-1/2	1-1/2	1	1	1-1/2
Bathtub	Faucet	4	2	3	2	1-1/2	1-1/2
Shower Head	Mixing Valve	4	2	3	2	1	2
Bathroom Group	Flush Valve Closet	--	--	--	8	8	3
Bathroom Group	Flush Tank Closet	--	--	--	6	6	3
Separate Shower	Mixing Valve	--	--	--	2	1	2
Service Sink	Faucet	3	3	3	--	--	--
Laundry Tubs (3)	Faucet	--	--	--	3	3	3
Combination Fixture	Faucet	--	--	--	3	3	3

Now apply the total fixture units to Table B to obtain your PDI size value.

PDI SIZE ARRESTER:	AA	A	B	C	D	E	F
FIXTURE UNITS:	1-5	1-11	12-32	33-60	61-113	114-154	155-330
THREAD SIZE:	1/2	1/2	3/4	3/4	1	1	1
CATALOG NUMBER:	ALL A95 SERIES						

MIP AA



PART NO.	SIZE	CTN/MSTR
A95001	1/2"	25/150

MSWT AA



PART NO.	SIZE	CTN/MSTR
A95002	1/2"	25/150

MSWT AA



PART NO.	SIZE	CTN/MSTR
A95003	3/4"	25/150

CPVC AA



PART NO.	SIZE	CTN/MSTR
A95004	1/2"	25/150

OD COMP AA



PART NO.	SIZE	CTN/MSTR
A95005	5/8"	25/150

PEX TEE AA



PART NO.	SIZE	CTN/MSTR
A95006	3/8"	25/150
A95007	1/2"	25/150

OD TEE AA



PART NO.	SIZE	CTN/MSTR
A95008	1/4"	25/75
A95009	3/8"	25/75
A95010	5/8"	25/75

Female Comp. x OD Comp.



PART NO.	SIZE	CTN/MSTR
A95014	3/8" x 3/8"	25/75

MHT x FHS AA



PART NO.	SIZE	CTN/MSTR
A95011	3/4"	25/75

Water Hammer Arresters - LEAD FREE

- Maximum working temp: 250°F
- Maximum working pressure: 300psi
- Burst pressure: 2900psi
- Polly Bagged



D

FIXTURE	TYPE OF SUPPLY CONTROL	PUBLIC			PRIVATE		
		TOTAL	C.W.	H.W	TOTAL	C.W.	H.W
Water Closet	Flush Valve	10	10	--	6	6	--
Water Closet	Flush Tank	5	5	--	3	3	--
Pedestal Urinal	Flush Valve	10	10	--	--	--	--
Stall or Wall Unit	Flush Valve	5	5	--	--	--	--
Stall or Wall Unit	Flush Tank	3	3	--	--	--	1
Lavatory	Faucet	2	1-1/2	1-1/2	1	1	1-1/2
Bathtub	Faucet	4	2	3	2	1-1/2	1-1/2
Shower Head	Mixing Valve	4	2	3	2	1	2
Bathroom Group	Flush Valve Closet	--	--	--	8	8	3
Bathroom Group	Flush Tank Closet	--	--	--	6	6	3
Separate Shower	Mixing Valve	--	--	--	2	1	2
Service Sink	Faucet	3	3	3	--	--	--
Laundry Tubs (3)	Faucet	--	--	--	3	3	3
Combination Fixture	Faucet	--	--	--	3	3	3

Now apply the total fixture units to Table B to obtain your PDI size value.

PDI SIZE ARRESTER:	AA	A	B	C	D	E	F
FIXTURE UNITS:	1-5	1-11	12-32	33-60	61-113	114-154	155-330
THREAD SIZE:	1/2	1/2	3/4	3/4	1	1	1
CATALOG NUMBER:	ALL A95 SERIES						

MIP AA



PART NO.	SIZE	CTN/MSTR
A97001	1/2"	1

MSWT AA



PART NO.	SIZE	CTN/MSTR
A97002	1/2"	1

CPVC AA



PART NO.	SIZE	CTN/MSTR
A97004	1/2"	1

PEX TEE AA



PART NO.	SIZE	CTN/MSTR
A97007	1/2"	1

OD TEE AA



PART NO.	SIZE	CTN/MSTR
A97009	3/8"	1

MHT x FHS AA



PART NO.	SIZE	CTN/MSTR
A97011	3/4"	1