



REDI-VENT® Air Admittance Valve

General:

An air admittance valve shall be acceptable as a vent termination for any individual vent, common vent, circuit vent, loop vent, island fixture vent, vent stack or stack vent that is provided to prevent siphonage of a fixture trap. An air admittance valve can be used as an alternative to extending a vent through the roof (or sidewall) to the open atmosphere.

Location:

- A. The REDI-VENT shall be located a minimum of 4" above the horizontal branch drain or fixture drain being vented and a minimum of 6" above the flood level of the highest fixture for stack venting.
- B. Each valve should be installed in an accessible location.

Installation:

- A. The valve should be connected to the piping in accordance with the manufacturer's installation instructions.
- B. Only thread seal tape can be used on the valves' threads. Use of primer, solvent cement, or pipe dope will void the Studor® warranty.
- C. The valve should be installed in the vertical, upright position after rough-in and pressure testing of the DWV system.
- D. A minimum of one vent shall extend to the open atmosphere for every building drainage system.
- E. The valve should not be installed in a non-neutralized special (chemical) waste system or in supply and return air plenums.
- F. The valve may be installed on sewer ejectors, if installed according to engineer design and prior local code approval.
- G. For installation in areas with temperature range between -40 and 150° F.

Features:

- A. Screening on the inside and outside of the valve to protect the sealing assembly from insects and debris.
- B. Will vent up to 20 DFUs on a horizontal branch.
- C. Limited lifetime warranty for replacement of defective valves.

Materials:

- A. ABS (acrylonitrile butadiene styrene) valve with silicone membrane
- B. ABS or PVC (adaptor)

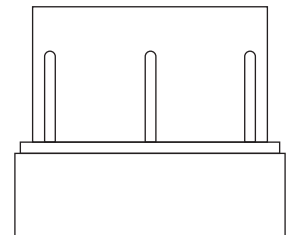
Performance Standards:

ANSI/ASSE 1051—2009 single fixture and branch type AAVs
 ANSI/ASSE 1050—2009 stack type AAVs
 NSF Standard 14—2009 Plastics Piping System and Componentsv

Code Compliance:

- International Plumbing Code (IPC)
- International Residential Code (IRC)
- Uniform Plumbing Code (UPC Section 301.2 Alternative Materials and Methods)
- National Standard Plumbing Code (NSPC) - Appendix "E"
- National Plumbing Code of Canada (NPC)

Listings:



Fits 1-1/2" or 2" pipe sizes

Horizontal Branch Size	Max DFUs
1-1/2"	3
2"	6
3"	20
4"	20
Stack Size	Max DFUs
1-1/2"	8

Item #	Model #	Product Description	Quantity
Standard Pack			
20346	20346	1 ½" or 2" PVC Adapter	24
20349	20349	1 ½" or 2" ABS Adapter	24
Bulk Pack			
20299	20299	1 ½" or 2" PVC Adapter	60
20298	20298	1 ½" or 2" ABS Adapter	60
REDI-VENT Adapter®			
44833	44833	PVC Adapter for REDI-VENT for use in Du-All WMOB	25
20336	20336	ABS Adapter for REDI-VENT for use in Du-All WMOB	25

* The X-Pack is the MINI-VENT® with hang tag.