



Klo-Shure® 7-Series Strut Mount Insulation Couplings

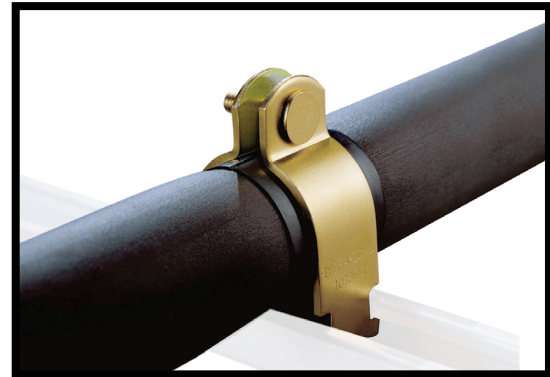
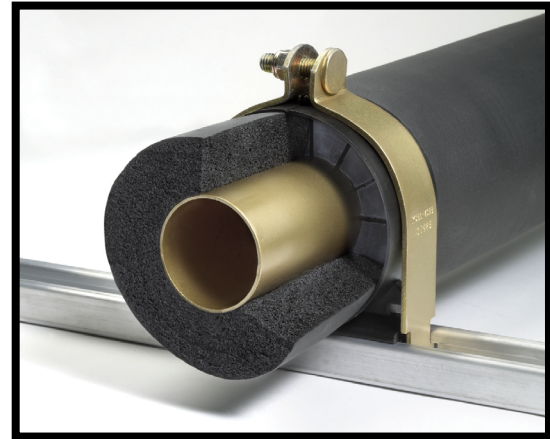
Product Guide

The patented Klo-Shure 7-Series Insulation Couplings supports and secures the copper tube independent of the insulation. The insulation is then inserted into the coupling to provide a superior vapor barrier to other methods. The weight of the secured member will not crush or tear the insulation over time.



Key Features

- UL Classified 2043 (25/50) for use in plenums and air handling systems.
- Superior vapor barrier at suspension points.
- Eliminate shock and vibration.
- Three times faster installation of closed-cell or elastomeric insulation than traditional methods.
- Dramatically improved finished appearance of insulated tubing.
- Eliminates insulation compression at suspension points.
- All metal components have a Trivalent (non-hex) plating.
- Available in 304 and 316 stainless steel.
- For use with strut mounted clamps.
- Available for 1/4" to 4-1/8" O.D. tube.
- Insulation wall thickness sizes include: 3/8"; 1/2"; 3/4"; 1" and 1-1/2".
- Molded with high strength Thermoplastic Olefin (TPO).
- Temperature rating: -60°F to +225°F



Use Recommendations

1. Coupling spacing should be no more than 60 diameters.
2. Install clamps as close as possible to each side of bend to prevent movement.
3. Overwrap of Klo-Shure coupling with insulation is not required.
4. Acceptable for horizontal, vertical, and inverted installations.

Klo-Shure 7-Series strut mounted parts include the Klo-Shure coupling, strut clamps with welded fastener and locknut.
For use with elastomeric insulation.



UL Standard 2043, 2nd Edition:
"Fire Test for Heat and Visible Smoke Release
for Discrete Products and Their Accessories
Installed in Air-Handling Spaces."

1751 Summit Drive ■ Auburn Hills, Michigan 48326 ■ (248) 373-5151

Hydra-Zorb.com



Klo-Shure® 7-Series Strut Mount Insulation Couplings

Product Guide

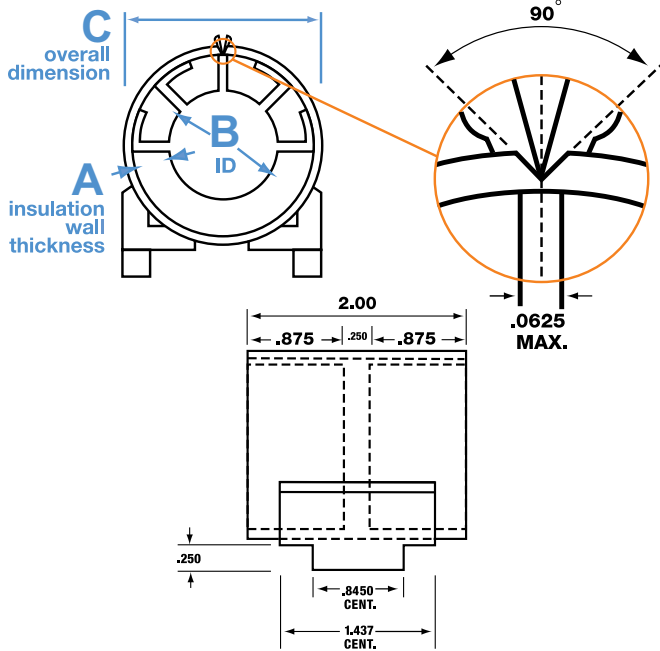
Part Numbering System

All Klo-Shure couplings consist of a 6-digit part number. The example below shows the breakdown of typical part numbers.

Part Number Example: The example below shows our numbering system for a strut mounted coupling for 1-5/8" tube with 1" wall insulation.

728162

- first digit**
7 = series
- second digit**
2 = strut mount
0 = clevis
- third digit**
insulation wall thickness based on 1/8" increments
3 = 3/8"
4 = 1/2"
6 = 3/4"
8 = 1"
9 = 1-1/2"
- last three digits**
outer diameter of the tubing/inner diameter of Klo-Shure coupling (decimal equivalent in inches)



A	B KLO-SHURE ID* TUBE OD	C OVERALL DIMENSION	PART NO.	QUANTITY PER BOX
Klo-Shure	1/4" OD	1.12	723025	40
Strut Mounted	3/8" OD	1.25	723037	25
Coupling for	1/2" OD	1.37	723050	20
3/8" wall insulation	5/8" OD	1.50	723062	20
	3/4" OD	1.62	723075	20
	7/8" OD	1.75	723087	20
	1" OD	1.87	723100	20
	1-1/8" OD	2.00	723112	20
	1-3/8" OD	2.25	723137	20
	1-5/8" OD	2.50	723162	10
	2-1/8" OD	3.00	723212	10
Klo-Shure	1/4" OD	1.37	724025	25
Strut Mounted	3/8" OD	1.50	724037	25
Coupling for	1/2" OD	1.62	724050	20
1/2" wall insulation	5/8" OD	1.75	724062	20
	3/4" OD	1.87	724075	20
	7/8" OD	2.00	724087	20
	1" OD	2.12	724100	20
	1-1/8" OD	2.25	724112	20
	1-3/8" OD	2.50	724137	20
	1-5/8" OD	2.75	724162	10
	2-1/8" OD	3.25	724212	10
	2-5/8" OD	3.75	724262	10
	3-1/8" OD	4.25	724312	10
	3-5/8" OD	4.75	724362	10
	4-1/8" OD	5.25	724412	10

***Note:** Klo-Shure ID equals copper tube O.D. Chart indicates coupling sizes currently available from Hydra-Zorb. All metal parts have Trivalent plating. Please contact factory for part number assistance.

A	B KLO-SHURE ID* TUBE OD	C OVERALL DIMENSION	PART NO.	QUANTITY PER BOX
Klo-Shure	1/4" OD	1.87	726025	20
Strut Mounted	3/8" OD	2.00	726037	20
Coupling for	1/2" OD	2.12	726050	10
3/4" wall insulation	5/8" OD	2.25	726062	10
	3/4" OD	2.37	726075	10
	7/8" OD	2.50	726087	10
	1-1/8" OD	2.75	726112	10
	1-3/8" OD	3.00	726137	10
	1-5/8" OD	3.25	726162	10
	2-1/8" OD	3.75	726212	10
	2-5/8" OD	4.25	726262	10
	3-1/8" OD	4.75	726312	10
	3-5/8" OD	5.25	726362	10
	4-1/8" OD	5.75	726412	10
Klo-Shure	1/4" OD	2.37	728025	10
Strut Mounted	5/16" OD	2.43	728031	10
Coupling for	3/8" OD	2.50	728037	10
1" wall insulation	1/2" OD	2.62	728050	10
	5/8" OD	2.75	728062	10
	3/4" OD	2.87	728075	10
	7/8" OD	3.00	728087	10
	1-1/8" OD	3.25	728112	10
	1-3/8" OD	3.50	728137	10
	1-5/8" OD	3.75	728162	10
	2-1/8" OD	4.25	728212	10
	2-5/8" OD	4.75	728262	10
	3-1/8" OD	5.25	728312	10
	3-5/8" OD	5.75	728362	10
	4-1/8" OD	6.25	728412	5
Klo-Shure	5/16" OD	3.43	729031	10
Strut Mounted	3/8" OD	3.50	729037	10
Coupling for	1/2" OD	3.62	729050	10
1-1/2" wall insulation	5/8" OD	3.75	729062	10
	7/8" OD	4.00	729087	10
	1-1/8" OD	4.25	729112	10
	1-3/8" OD	4.50	729137	10
	1-5/8" OD	4.75	729162	10
	2-1/8" OD	5.25	729212	10
	2-5/8" OD	5.75	729262	10
	3-1/8" OD	6.25	729312	5
	4-1/8" OD	7.25	729412	5