

HoldRite®  
Engineered Solutions

Products  
2019



# HoldRite® ProGuard® Protect Your Stub-Out

AN RWC BRAND  
**RWC**



## **A Valued Member of the RWC Family of Brands**

RWC is a powerful family of innovative brands that deliver, control, optimize and solve to make our customers' lives easier. As part of the RWC family, HoldRite adds value through providing plumbing and firestop solutions that operate as an efficient system with our other subsidiaries. We own every part of our manufacturing process from concept to delivery, and strive each day to ensure the quality of our products. HoldRite products have been designed and manufactured in the USA since 1982.

HoldRite has created a national footprint with strategically placed locations across the United States. With allied resources in Georgia, Alabama, Tennessee, Nevada and California, HoldRite is able to distribute patent protected products to consumers in North America.

## **Converting Makeshift Methods into Engineered Solutions Since 1982**

In 1982, Master Plumber George Hubbard designed a pipe support solution (The HoldRite® #101-18) to replace the time-consuming and labor-intensive method of cutting blocks of wood for every job. Hubbard's invention revolutionized plumbing in North America by ushering in the plumbing methodology of secondary pipe support.

Today, HoldRite® is an industry leader in products and services including secondary pipe supports, acoustic noise and vibration plumbing solutions, sleeving and firestop systems, equipment support, water heater accessories, and drain waste and vent (DWV) solutions.

Understanding your perspective has always been in our DNA. Even though we've evolved into an international company and recognized brand leader, we know our value comes from providing superior products and services for building projects, without increasing costs.

Thank you for giving us the opportunity to pioneer new products and transform the plumbing industry together.

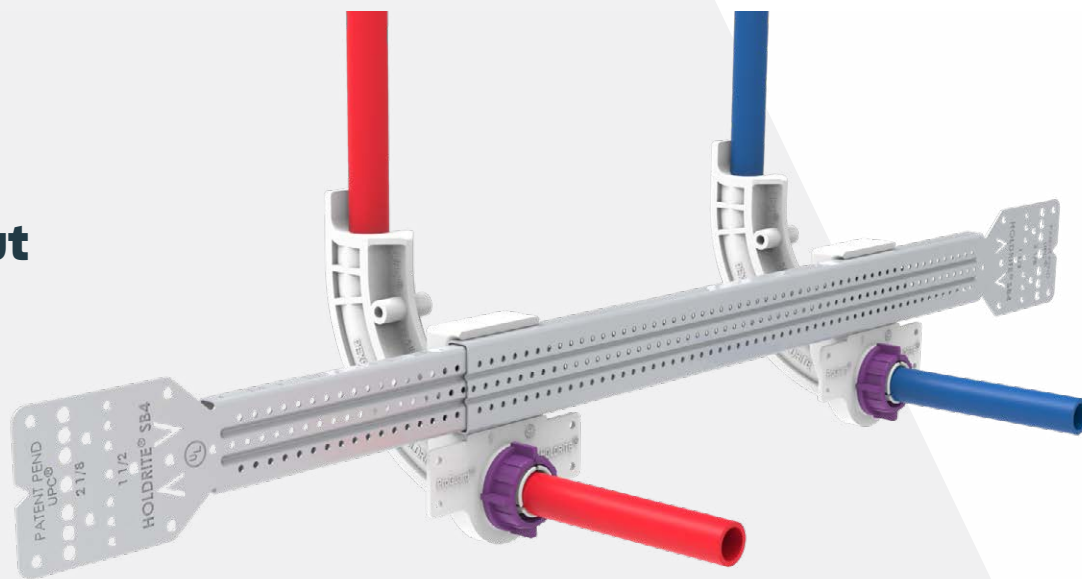
**HoldRite.com**

# HoldRite® ProGuard®

Protect Your Stub-Out

Compatible with PEX, copper and CPVC

PEX  
Stub-Out



Pick Your Stub-Out Method

Compatible with PEX, Copper & CPVC

PEX to Copper  
Stub-Out



# Wall Clearance Analysis: PEX Stub-Out Support

## The Expert in PEX Stub-Out Supports

For over twenty years, HoldRite® has been the expert in pioneering and producing innovative PEX stub-out support products for plumbing contractors, mechanical engineers, and PEX manufacturers in the North American potable water system market.

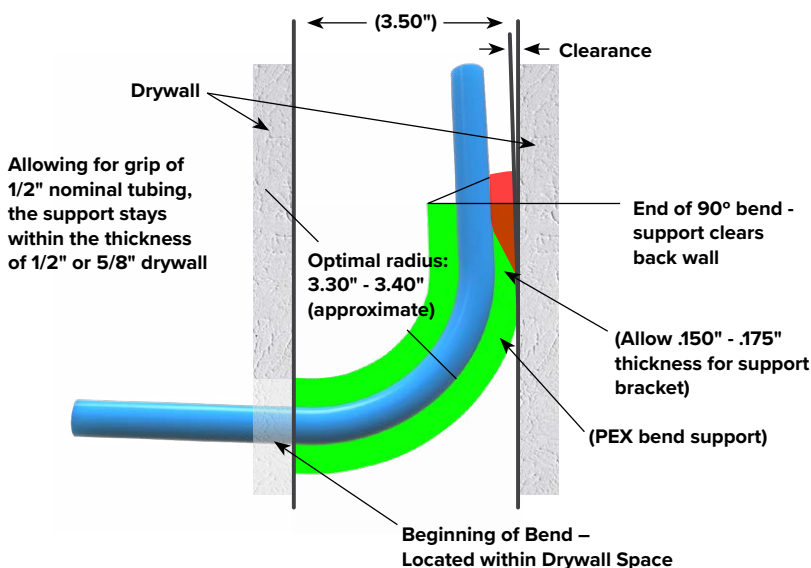
As the industry leader in stub-out pipe supports, our engineering design team has seen our PexRite® technologies successfully installed by contractors. Their unique requirements led us to a more thorough understanding of PEX tubing performance, differences in regional installation methodologies, extreme climate and temperature ranges, and the challenges of various plumbing applications.

At the forefront of the evolution of PEX in North America, HoldRite® can listen, learn, and innovate within the plumbing ecosystem. With this applied knowledge we continue to expand our reputation for **“Converting Makeshift Methods into Engineered Solutions<sup>SM</sup>.”**

## Observation & Discussion: Ideal PEX Stub-Out Solution

Below is a commonly observed schematic of a PEX stub-out within a confined wall that demonstrates the risk of extreme bending of PEX, the challenges of fitting PEX within the wall, and the ideal solution for a PEX stub-out support.

**Figure 1: Schematic of Commonly Observed In-Wall PEX Stub-Out with Ideal Bend Support**



### Ideal Solution - Broadest PEX Bend that:

- Fits within wall, including bend support
- Remains flush with drywall surface
- Retains nominal clearance at rear of installation
- Allows nominal clearance length for gripping tubing at near right angle exit from wall

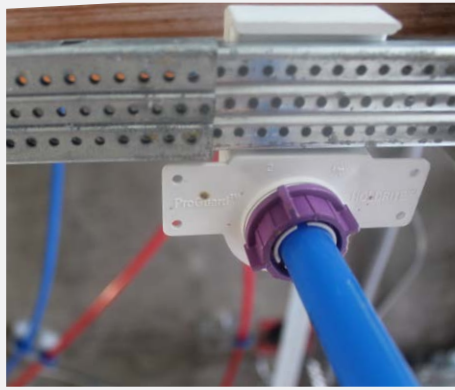
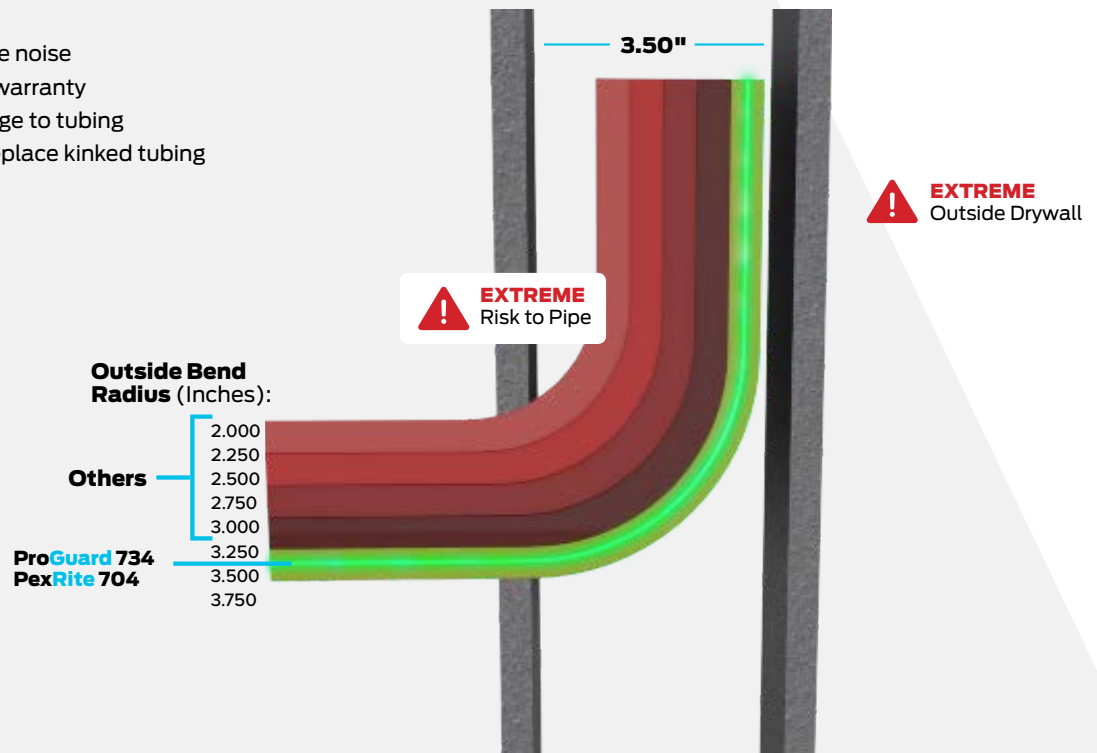
## Conclusion: HoldRite ProGuard® #734 Optimally Designed to Protect the PEX Stub-Out

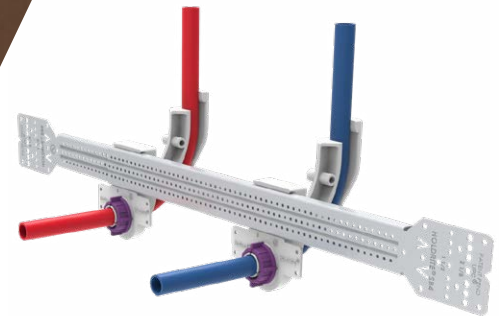
The HoldRite ProGuard® #734 in-wall PEX stub-out solution provides a rigid installation while maintaining the optimal outside bend radius range recommendation of 3.3" to 3.4". It also locks the stub-out in the Z-axis to prevent unwanted front to back slippage, making this patent pending design the ideal solution.

**Figure 2: In Wall PEX Stub-Out Radius Analysis**

### Summary: Bend radius that is too small risks:

- Kinking or flattening of tubing at installation, or due to movement of tubing in wall
- Reduced flow rate
- Increased turbulence noise
- Loss of PEX tubing warranty
- Weakening or damage to tubing
- Need for repair, to replace kinked tubing





### **HoldRite ProGuard®**

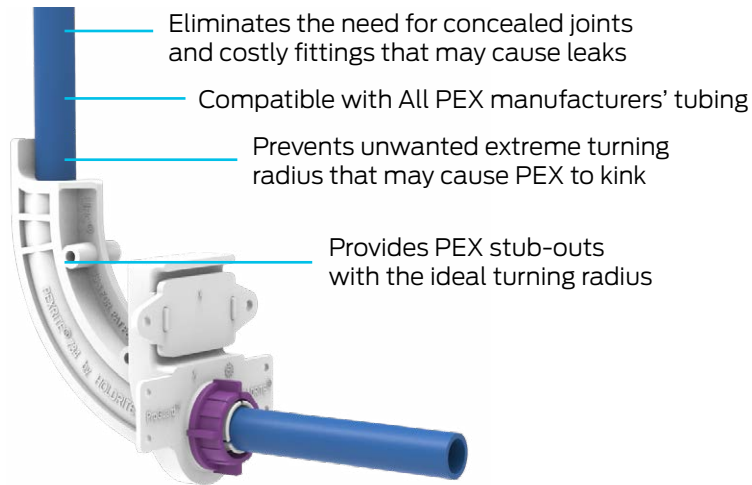
**#734 | 1/2" CTS (PEX only)**

- Secures tubing from unwanted forward or backward movement
- Protects PEX stub-outs and ensures they are inside the wall envelope
- Provides 360° turning radius
- Reduces noise and vibration
- Fire Rated: Meets UL 94 V-0
- Fast and easy to install
- Tightens by hand — no tools or hardware required

# Pick Your Stub-Out Method

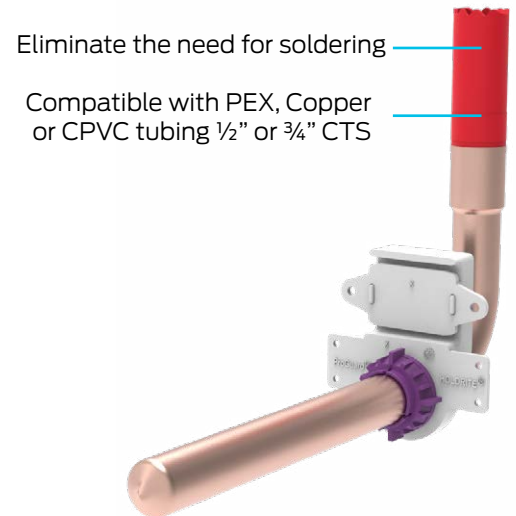
## Pex Tubing

HoldRite ProGuard®  
#734 | 1/2" CTS (PEX only)



## Copper or Rigid Tubing

HoldRite ProGuard®  
#731 or #732 | 1/2" CTS or 3/4" CTS



# HoldRite ProGuard® Integrates Directly with #SB3 or #SB4 HoldRite® Stout Bracket® Only



- Telescopes between studs for stout support (10 1/4" to 25 1/2")
- Ideal system for lavatory/sink, toilet, shower, water heater and vertical support applications
- Great versatility - Install bracket flush against the stud or inset bracket within the stud bay
- Supports both 2-eared and 3-eared 90s – Ideal for shower heads
- Compatible with many HoldRite® and other manufacturers' clamps



## The Single Bracket Platform #SB3 & #SB4

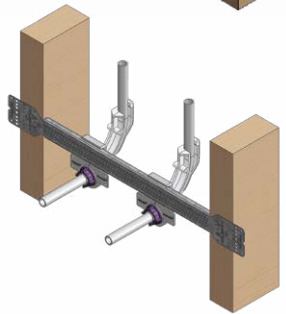
# HoldRite ProGuard® by Application

HoldRite ProGuard® integrates with the HoldRite® #SB3/#SB4 platform to provide an engineered solution for various construction projects (single family, multi-family, hotel, other). Regardless of what type of material (PEX, copper, or CPVC) selected by the contractor, or application (sink, toilet, shower, vertical mid-span, other) that requires support and alignment, HoldRite® provides a professional system that is versatile, fast & easy to install, protects the stub-outs required turning radius, and secures the tubing from unwanted forward or backward movement.



**SINK**  
Copper to  
PEX 1/2" Solution  
HoldRite ProGuard®  
#SB3-7312

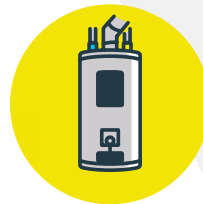
OR



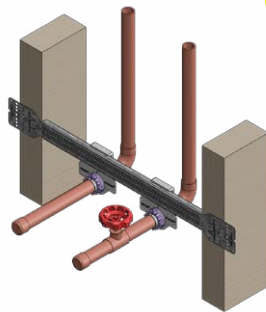
**SINK**  
PEX 1/2" Solution  
HoldRite ProGuard®  
#SB3-7342



## Kitchen

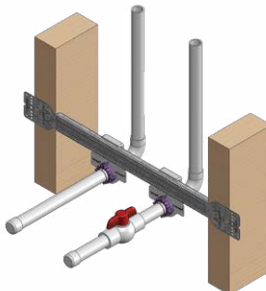


## Water Heater



**WATER HEATER**  
Copper 3/4" Solution  
HoldRite ProGuard®  
#SB3-7322

OR

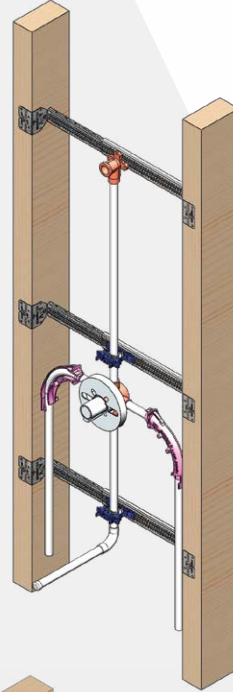
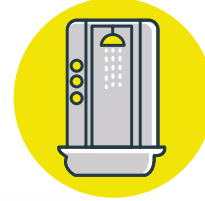


**WATER HEATER**  
CPVC 3/4" Solution  
HoldRite ProGuard®  
#SB3-7322





# Bathroom

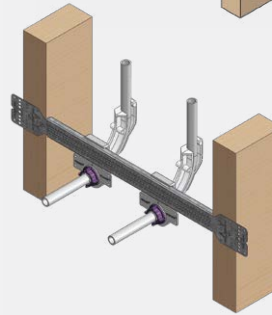


**TUB/SHOWER**  
**Support Solution**  
 HoldRite® #SB3  
 HoldRite® #255  
 PexRite® #704

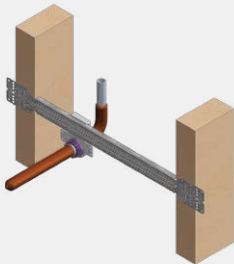


**LAVATORY**  
**Copper to**  
**PEX 1/2" Solution**  
 HoldRite ProGuard®  
 #SB3-7312

OR

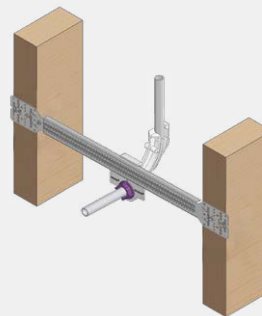


**LAVATORY**  
**PEX 1/2" Solution**  
 HoldRite ProGuard®  
 #SB3-7342



**TOILET**  
**Copper to**  
**PEX 1/2" Solution**  
 HoldRite ProGuard®  
 #SB3-7311

OR



**TOILET**  
**PEX 1/2" Solution**  
 HoldRite ProGuard®  
 #SB3-7341

# HoldRite ProGuard® Installation Instructions

## HoldRite ProGuard® #734 Installation Instructions



**1** Secure bracket to studs using two screws/nails at each end



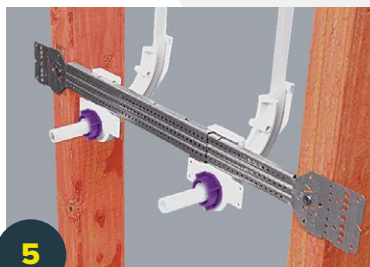
**2** Secure #734 clamps at desired positions with rear nut



**3** Slide 1/2" tubing through clamp



**4** Bend PEX into clamp. Then tighten front nut



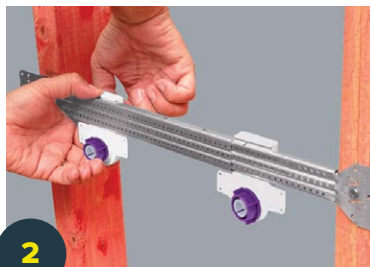
**5** Repeat for second clamp and installation is complete



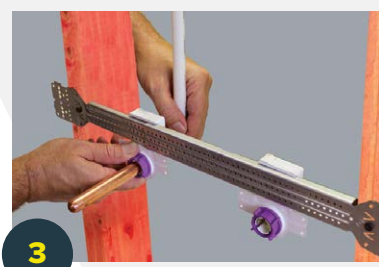
## HoldRite ProGuard® #731 Installation Instructions



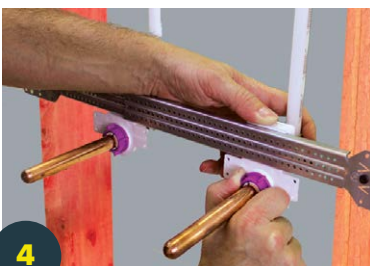
**1** Secure bracket to studs, using two screws/nails at each end



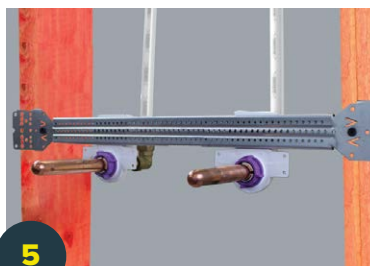
**2** Secure #731 clamps at desired positions with rear nut



**3** Slide 1/2" tubing through clamp



**4** Secure tubing by tightening front nut



**5** Repeat for second clamp and installation is complete

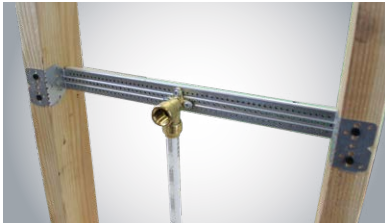




# HoldRite ProGuard® Supports



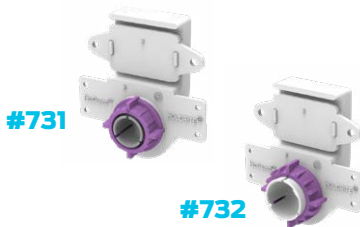
SB3 & SB4



## HoldRite® Stout Bracket®

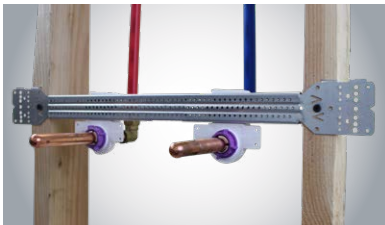
- Galvanized telescoping bracket
- Ideal for shower, sink/lavatory, toilet, water heater, vertical mid-span, & more
- Supports both 2-eared and 3-eared 90s
- Telescoping design supports PEX, copper, and CPVC, and other items
- Integrates with ProGuard™ #731, #732, and #734

Model Number	Bracket Size	For Pipe Size(s)	Box Qty
SB3	10-1/4" to 17-1/2"	Various	50
SB4	14-1/2" to 25-1/2"	Various	50



#731

#732



## HoldRite® ProGuard®

- Stub-out clamps that integrate with model #SB3 and #SB4
- Compatible with PEX, CPVC, or Copper Tubing
- Flame Rated: UL 94 V-0

**#731** - Stub-out clamp ideal for 1/2" CTS PEX-to-copper transition, copper, CPVC at lavatory/sink or toilet

**#732** - Stub-out clamp ideal for 3/4" CTS PEX-to-copper transition, copper or CPVC tubing at water heater

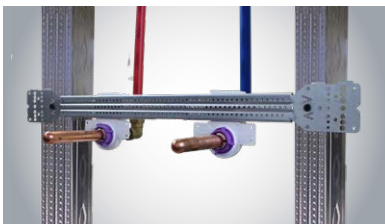
Model Number	Description	Box Qty
731	Stub-out clamp support 1/2" CTS	50
732	Stub-out clamp support 3/4" CTS	50



SB3-7311 or SB4-7311



SB4-7312 or SB4-7312



## HoldRite® ProGuard® for Toilets and Sinks/Lavatories

- **Pre-assembled kits** for toilets and sinks/lavatories (1/2" CTS)
- Compatible with PEX, copper, or CPVC
- Ideal for PEX-to-copper transition
- Flame Rated: UL 94 V-0

Model Number	Description	Box Qty
SB3-7311	(1) SB3 Stout Bracket®, (1) 731 stub-out clamp support	25
SB3-7312	(1) SB3 Stout Bracket®, (2) 731 stub-out clamp supports	25
SB4-7311	(1) SB4 Stout Bracket®, (1) 731 stub-out clamp support	25
SB4-7312	(1) SB4 Stout Bracket®, (2) 731 stub-out clamp supports	25

# HoldRite ProGuard® Supports



SB3-7322



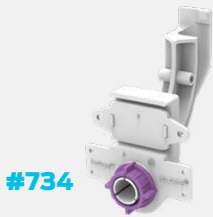
SB4-7322



## HoldRite® ProGuard® for Water Heaters

- **Pre-assembled kits** for water heaters ( $\frac{3}{4}$ " CTS)
- Compatible with PEX, copper, or CPVC
- Ideal for PEX-to-Copper transition
- Flame Rated: UL 94 V-0

Model Number	Description	Box Qty
SB3-7322	(1) SB3 Stout Bracket®, (2) 732 stub-out clamp supports	25
SB4-7322	(1) SB4 Stout Bracket®, (2) 732 stub-out clamp supports	25



#734



SB3-7341 or SB4-7341



SB3-7342 or SB4-7342



## HoldRite® ProGuard® for PEX only

- **Pre-assembled PEX ONLY turn-out and turn-out kits** for toilets and sinks/lavatories
- Provides PEX stub-outs with the ideal turning radius
- Prevents unwanted extreme turning radius that may cause PEX to kink
- Eliminates in-wall fittings and concealed joints
- Flame Rated: UL 94 V-0
- Compatible with all manufacturers'  $\frac{1}{2}$ " CTS PEX tubing

Model Number	Description	Box Qty
734	Turn-out support for $\frac{1}{2}$ " CTS PEX tubing only	50
SB3-7341	(1) SB3 Stout Bracket®, (1) 734 turn-out clamp support	25
SB3-7342	(1) SB3 Stout Bracket®, (2) 734 turn-out clamp supports	25
SB4-7341	(1) SB4 Stout Bracket®, (1) 734 turn-out clamp support	25
SB4-7342	(1) SB4 Stout Bracket®, (2) 734 turn-out clamp supports	25

# PexRite® Supports

**HoldRite®  
Lock-n-Load™**



#701

**PexRite®  
Lock-n-Load™**



#702

**PexRite®**



#704

**PexRite®  
Pop-Up™**



#708

**PexRite®  
Pop-Up™**



#708-E

**PexRite®  
Pop-Up™**



#707

**PexRite®  
Pop-Up™**



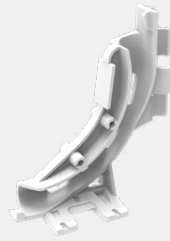
#707-E

**PexRite®  
Pop-Up™**



#705

**PexRite®  
Pop-Up™**



#706

**PexRite®  
90° Bend Supports**



#710

**PexRite®  
90° Bend Supports**



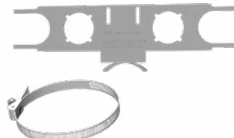
#711

**HoldRite®**



#721

**HoldRite®**



#110-R

**HoldRite®**



#709

**HoldRite®**



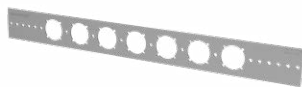
#709-L

**HoldRite®**



#709-EXT

**HoldRite®**



#103-18 or #103-26

**HoldRite®  
Stout Bracket™**



#SB1S or #SB2S

**HoldRite®  
Stout Bracket™**



#SB3 or #SB4

# HoldRite® Inserts & Clamps

## HoldRite® Cold Line Isolator Inserts



#424-RB through #426-RB

## HoldRite® Hot Line Isolator Inserts



#424-RR through #426-RR

## HoldRite® Isolator Inserts



#424 through #426

## HoldRite® Isolator inserts



#104 through #106

## HoldRite® Isolator inserts



#404-R through #406-R



Solutions to  
Shape the World™

Stay up to date visit [www.HoldRite.com](http://www.HoldRite.com)

Connect With Us



Manufactured & Distributed by Reliance Worldwide Corporation