

Electrical Supports and Firestop Sleeves

Brochure



A Valued Member of the RWC Family of Brands

RWC is a powerful family of innovative brands that deliver, control, optimize and solve to make our customers' lives easier. As part of the RWC family, HoldRite™ adds value by providing plumbing, electrical, and firestop solutions that operate as an efficient system with our other subsidiaries.

We own every part of our manufacturing process from concept to delivery, and strive each day to ensure the quality of our products. HoldRite™ products have been designed and manufactured in the USA since 1982.

HoldRite™ has created a national footprint with strategically placed locations across the United States. With allied resources in Georgia, Alabama, Tennessee, Nevada and California, HoldRite™ is able to distribute patent protected products to consumers in North America.

Innovating the Construction Industry Since 1982

In 1982, Master Plumber George Hubbard designed a pipe support solution (The HoldRite™ 101-18) to replace the time-consuming and labor-intensive method of cutting blocks of wood for every job. Hubbard's invention revolutionized plumbing in North America by ushering in the plumbing methodology of secondary pipe support.

Today, HoldRite™ is an industry leader in products and services including secondary pipe supports, acoustic noise and vibration plumbing solutions, sleeving and firestop systems, equipment support, water heater accessories, and drain waste and vent (DWV) solutions.

Understanding your perspective has always been in our DNA. Even though we've evolved into an international company and recognized brand leader, we know our value comes from providing superior products and services for building projects, without increasing costs.

Thank you for giving us the opportunity to pioneer new products and transform the electrical industry together.

holdrite.com



Training

At HoldRite™, we recognize the importance of training the industry on our innovative products in order for contractors, distributors and engineers to quickly adopt these products and reap the benefits of specifying, installing and selling them. With HoldRite University, you can experience HoldRite's wide variety of product training courses dedicated to our core products.

Online Training - Learn as you go with accessible education that's virtual and self-paced. For more information, visit <https://go.bluevolt.com/holdrite/s/>

On-site Training - Customizable on-site training with hands-on instruction.

Electrical In-Slab Support Solutions



Single Tube In-Slab Support, Adjustable Cap

Features and benefits

- Ideal for slabs 7-1/2" to 8" thick
- Includes Locator whiskers to locate buried tubing
- Compatible with 3/4" electrical conduit
- Available for single and double pipe runs
- Multi-run versatility with interlocking feet, ideal for manifold locations

Model#	Size	Pipe Size	Box Qty
703-SC	8-1/4" X 4" X 7-2/5"	1/2" PEX Tubing	20



Double Tube In-Slab Support, Adjustable Cap

Features and benefits

- Ideal for slabs 7-1/2" to 8" thick
- Includes Locator whiskers to locate buried tubing
- Compatible with 3/4" electrical conduit
- Available for single and double pipe runs
- Multi-run versatility with interlocking feet, ideal for manifold locations

Model#	Size	Pipe Size	Box Qty
703-DC	8-1/4" X 4" X 7-2/5"	1/2" PEX Tubing	20



Single Tube In-Slab Support, Ext. Screw Cap

Features and benefits

- Ideal for slabs 7-1/2" to 10" thick (extensions available for slabs greater than 10")
- Includes Locator whiskers to locate buried tubing
- Compatible with 3/4" electrical conduit
- Available for single and double pipe runs
- Multi-run versatility with interlocking feet, ideal for manifold locations

Model#	Size	Pipe Size	Box Qty
703-SEC	8-1/4" X 4" X 7-2/5"	1/2" PEX Tubing	20



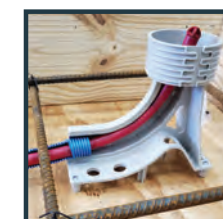
Double Tube In-Slab Support, Ext. Screw Cap

Features and benefits

- Ideal for slabs 7-1/2" to 10" thick (extensions available for slabs greater than 10")
- Includes Locator whiskers to locate buried tubing
- Compatible with 3/4" electrical conduit
- Available for single and double pipe runs
- Multi-run versatility with interlocking feet, ideal for manifold locations

Model#	Size	Pipe Size	Box Qty
703-DEC	8-1/4" X 4" X 7-2/5"	1/2" PEX Tubing	20

Easy Installation



Patent Pending

Electrical

In-Slab Support Solutions



703-EXT

703 Extension

Features and benefits

- For use with slabs greater than 10 inches
- Each extension adds 3" of height and are attached via a threaded connection

Model#	Size	Box Qty
703-EXT	4" X 4" X 3-1/2"	20



703-BBUL

703 Blue Bullet

Features and benefits

- Protects the end of the PEX from damage and debris
- Eases installation when inserting PEX through the 703 body

Model#	Size	Pipe Size	Box Qty
703-BBUL	0.725" X 0.70" X 0.208"	1/2" PEX Tubing	25



703-RBUL

703 Red Bullet

Features and benefits

- Protects the end of the PEX from damage and debris
- Eases installation when inserting PEX through the 703 body

Model#	Size	Pipe Size	Box Qty
703-RBUL	0.725" X 0.70" X 0.208"	1/2" PEX Tubing	25



703-RET

703 PEX Retainer Ring

Features and benefits

- Secures PEX within recessed cavity
- Prevents movement of the PEX prior to the slab pour

Model#	Size	Pipe Size	Box Qty
703-RET	0.97" X 0.97" X 0.08"	1/2" PEX Tubing	25



707

PEXRite Pop-Up

Features and benefits

- Cast-in-place 90° Pop-Up for flex conduit
- Interlocking feet - snap multiples together
- Easy side entry for flex conduit
- Supports single runs up to 7/8" O.D.
- Secure to concrete form deck or groundwork rebar

Model#	Size	For Pipe Size(s)	Box Qty
707	8-1/2" X 8-5/8" X 1-1/4"	3/8" to 7/8" O.D.	25



707-E

PEXRite Pop-Up

Features and benefits

- Cast-in-place 90° Pop-Up for flex conduit or rigid 90s
- Interlocking feet - snap multiples together
- Easy zip-tie access to secure flex or rigid conduit 90°
- Supports single runs up to 1-1/2" O.D.
- Secure to concrete form deck or groundwork rebar

Model#	Size	For Pipe Size(s)	Box Qty
707-E	8-1/2" X 8-5/8" X 1-1/4"	3/8" to 1-1/2" O.D.	25



708

PEXRite Pop-Up

Features and benefits

- Cast-in-place 90° Pop-Up for flex conduit
- Interlocking feet - snap multiples together
- Easy side-entry for flex conduit
- Supports single runs up to 1-1/8" O.D.
- Secure to concrete form deck or groundwork rebar

Model#	Size	For Pipe Size(s)	Box Qty
708	10-1/2" X 11-1/8" X 2-1/2"	3/8" to 1-1/8" O.D.	15



708-E

PEXRite Pop-Up

Features and benefits

- Cast-in-place 90° Pop-Up for flex conduit or rigid 90's
- Interlocking feet - snap multiples together
- Easy zip-tie access to secure flex or rigid conduit 90°
- Supports single runs up to 2-1/2" O.D.
- Secure to concrete form deck or groundwork rebar

Model#	Size	For Pipe Size(s)	Box Qty
708-E	10-1/2" x 11-1/6" x 3-1/4"	3/8" to 2-1/2" IPS	15

Easy Installation



Patent Pending

Electrical Supports

- Fast, safe & professional electrical support solutions
- Increased efficiency for supporting pipe and conduit
- Improve your rough-in speed and accuracy
- Reduce your overall installed costs



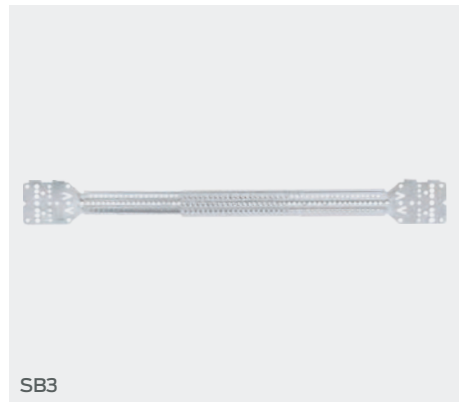
SB1

HoldRite™ Stout Bracket

Features and benefits

- Telescoping multi-purpose platform
- UL Listed bar hanger for junction and outlet box applications
- Galvanized steel for strength and durability
- Supports outlet boxes, conduit, wiring, cabling, etc. using HoldRite clamps or common attachments

Model#	Stud Bay Widths	For Pipe Size(s)	Box Qty
SB1	10" to 18"	Various	50
SB2	13" to 25"	Various	50



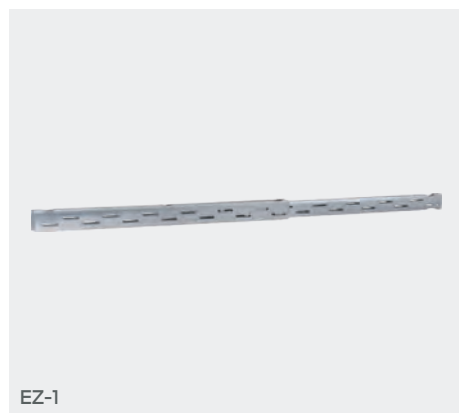
SB3

HoldRite™ Stout Bracket

Features and benefits

- Telescoping multi-purpose platform
- UL Listed bar hanger for junction and outlet box applications
- Galvanized steel for strength and durability
- Supports outlet boxes, conduit, wiring, cabling, etc. using HoldRite clamps or common attachments
- SB3 extends 10-1/4" to 17-1/2"
- SB4 extends 14-1/2" to 25-1/2"

Model#	Stud Bay Widths	For Pipe Size(s)	Box Qty
SB3	10-1/4" to 17-1/2"	Various	50
SB4	14-1/2" to 25-1/2"	Various	50



EZ-1

HoldRite™ EZ-Strut

Features and benefits

- Versatile telescoping trapeze platform suspends from all-thread rod
- UL Listed bar hanger for junction and outlet box applications
- Galvanized steel for strength and durability
- Manufacturer rated for up to 1,100 lbs uniform load
- Supports conduit, wiring, cabling, etc. using HoldRite clamps or common attachments
- EZ-1 extends 12" to 21"
- EZ-2 extends 23" to 40"

Model#	Clamp Size	For Pipe Size(s)	Box Qty
EZ-1	12" to 21"	Various	25
EZ-2	23" to 40"	Various	25



250

HoldRite™ Variable Isolation Clamp

Features and benefits

- Variable-fit clamps for range of sizes
- Secure conduit, cabling, etc. to HoldRite SB and EZ series brackets or other surfaces
- Available in ASTM E84 25/50 plenum-rated materials as #250-S and #280-S
- UL94V-2 flame-rated nylon
- #250 secures up to 1" CTS
- #280 secures 1" to 2" CTS/IPS

Model#	Clamp Size	For Pipe Size(s)	Box Qty
250	2-3/8" X 2-5/8"	Up to 1" CTS	50
280	4-3/8" X 5-1/8"	1" - 2" CTS/IPS	50



255

HoldRite™ Variable Isolation Clamp

Features and benefits

- Variable-fit clamps for range of sizes
- Secure conduit, cabling, etc. to HoldRite SB and EZ series brackets or any flat surface
- Available in ASTM E84 25/50 plenum-rated materials as #255-S and #285-S
- UL94V-2 flame-rated nylon
- #255 secures up to 1" CTS
- #285 secures 1" to 2" CTS/IPS

Model#	Clamp Size	For Pipe Size(s)	Box Qty
255	2-7/8" X 2"	Up to 1" CTS	50
285	4-3/8" X 4"	1" - 2" CTS/IPS	50



257-P

HoldRite™ Strut Clamp

Features and benefits

- Variable-fit clamps for range of sizes
- Secure conduit, cabling, etc. to standard strut/channel
- Available in ASTM E84 25/50 plenum-rated materials as #257-S and #287-S
- Installs without tools
- UL94V-2 flame-rated nylon
- (-P) refers to pads

Model#	Size	For Pipe Size(s)	Box Qty
257	2-1/2" x 2-7/8"	Up to 1" CTS	50
287	3-1/2" x 4-7/8"	1" - 2" CTS/IPS	50
257-P	2-1/2" x 2-7/8"	Up to 1" CTS	50
287-P	3-1/2" x 4-7/8"	1" - 2" CTS / IPS	50



426-RR

HoldRite™ Isolators

Features and benefits

- Anti-abrasion and isolation insert, 1-1/8" I.D.
- Fits 1-11/32" and 1-3/8" diameter holes in sheet metal from 14-25GA
- #426RR made of UL94V-2 flame-rated material
- #426RR colored red, perfect as visual cue for fire alarm wiring/conduit circuits
- Also available in ASTM E84 25/50 plenum-rated material as #426-S

Model#	Hole Size	Pipe Size	Box Qty
426-RR	1-11/32" & 1-3/8"	1" CTS	50

Firestop Sleeves

- Telescoping & adjustable cap options
- Easy to identify electrical firestop sleeves with green base and locator whiskers
- UL Listed firestop device (2- or 3-hour F ratings)
- Fast, safe & professional solution for running metal conduits, plastic conduits, cables or open cable bundles



HFP-G5

HoldRite™ HydroFlame Pro Series Telescoping Electrical Firestop Sleeves

Features and benefits

- Ideal for flat concrete form decks and corrugated metal decks
- Available for 1/2" to 6" penetrants – conduit, cables, cable bundles, etc.
- Built-in fire, smoke/gas and water protection
- Telescoping design adjusts from 7-1/2" to 11-3/4" in 1/4" increments (extensions available)
- Safety caps meet OSHA hole cover requirements
- Allows for contraction, expansion, movement and off-center pipes
- Can be field cut as low as 2-1/2" tall

Model#	Penetrating Conduit or Cable Bundle	Nominal Penetrant Size	Box Qty
HFP-G1	Plastic, metal and cable bundles	1/2" - 1"	10
HFP-G2	Plastic, metal and cable bundles	1-1/4" - 2"	10
HFP-G3	Plastic, metal and cable bundles	2" - 3"	10
HFP-G4	Plastic, metal and cable bundles	3" - 4"	10
HFP-G5	Plastic, metal and cable bundles	4" - 5"	2
HFP-G6	Plastic, metal and cable bundles	5" - 6"	2



HFP-G4B

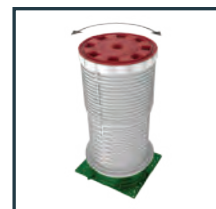
HoldRite™ HydroFlame Pro Series Electrical Firestop Sleeves with Adjustable Cap

Features and benefits

- Ideal for flat concrete form decks and corrugated metal decks
- Available for 1/2" to 6" penetrants – conduit, cables, cable bundles, etc.
- Built-in fire, smoke/gas and water protection
- Safety cap adjusts from 7-1/4" to 8" in 1/4" increments
- Safety caps meet OSHA hole cover requirements
- Allows for contraction, expansion, movement and off-center pipes
- Can be field cut as low as 3-1/2" tall

Model#	Penetrating Conduit or Cable Bundle	Nominal Penetrant Size	Box Qty
HFP-G1B	Plastic, metal and cable bundles	1/2" - 1"	10
HFP-G2B	Plastic, metal and cable bundles	1-1/4" - 2"	10
HFP-G3B	Plastic, metal and cable bundles	2" - 3"	10
HFP-G4B	Plastic, metal and cable bundles	3" - 4"	10
HFP-G5B	Plastic, metal and cable bundles	4" - 5"	2
HFP-G6B	Plastic, metal and cable bundles	5" - 6"	2

Easy Installation



Lock outer sleeve in place



Nail to form deck



Remove cap with safety cap tool

Transforming Firestop Solutions

Cast-in-Place Sleeve System

- Telescoping sleeves allow easy adjustment from 7-1/2" to 11-3/4" high
Additional extension sold separately for slabs thicker than 11-3/4"
- Green locator whiskers for electrical included
Easily locate buried electrical sleeves after concrete pour
- Faster install
6 times faster to install than makeshift methods
- Works on conduit (metal or plastic)
Great for running multi-power and data cables
- UL Listed firestop device
Meets and exceeds building code requirements
- Green sleeve base for electrical
Easily identify electrical sleeve locations from underside of the deck after concrete has poured

UL Rating Chart

Type	UL Rating	Status
Water	W	✓
Smoke / Gas	L	✓
Fire	F	✓
Thermal	T*	✓

*T-Rating when penetrant is non-metallic



Patented and Patent Pending.





For more information, visit
holdrite.com

Connect with us



Certifications

The most up-to-date certifications can be found at holdrite.com.

Manufactured & Distributed by Reliance Worldwide Corporation®.
HR_Electrical Support Brochure_01.2022

