

HOLDRITE® Silencer™

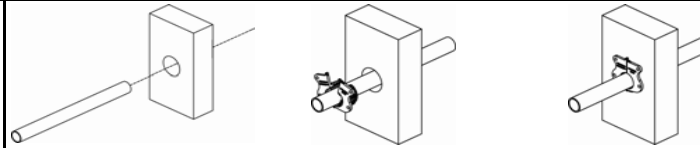
(Acoustical Product Installation Instructions)

THROUGH-STUD ISOLATORS / SUSPENSION CLAMPS

#261 (1/2"CTS), #262 (3/4"CTS), #263 (1"CTS), #264 (1-1/4"CTS)

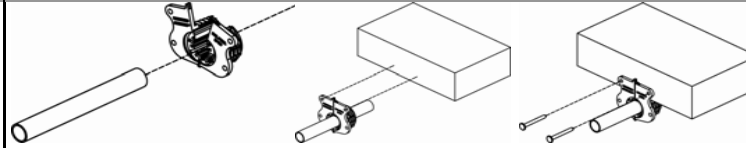
When used as a "Through-Stud Isolator"

- 1) Install tubing through hole in framing member.
- 2) Open clamp and install over tubing.
- 3) Close clamp and slide fully into hole.



When used as a "Suspension Clamp"

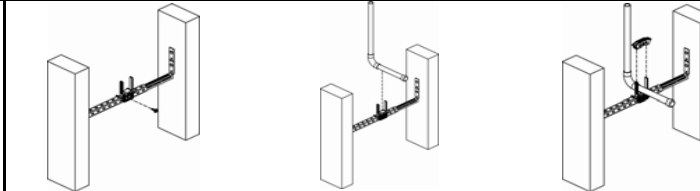
- 1) Open clamp and install over tubing.
- 2) Slide into position next to the framing member.
- 3) Attach clamp to framing with two (2) fasteners.



STOUT CLAMP™ (Variable size)

#250 (3/8"-1"CTS), #280 (1"-2"CTS/IPS)

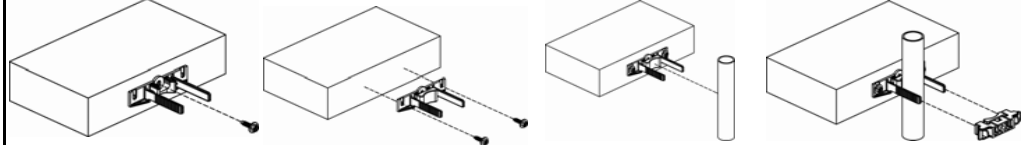
- 1) Place base of clamp onto bracket/framing. Secure w/ one screw.
- 2) Place tubing onto base of clamp, with rubber isolator in place.
- 3) Push top of clamp over two posts on base of clamp. (Only hand tight)



STANDARD CLAMPS (Variable size)

#255 (3/8"-1"CTS), #285 (1"-2"CTS/IPS)

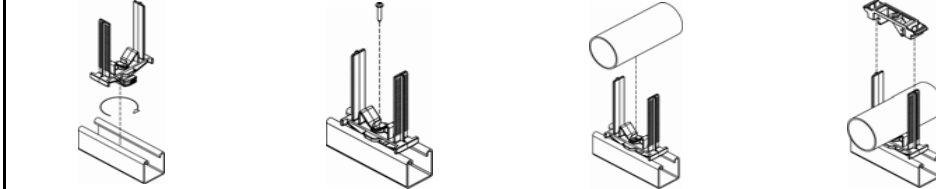
- 1) Secure base of clamp to framing or other flat surface w/ one screw, or
- 2) Optional: Insert two (2) screws through end tabs.
- 3) Place tubing onto base of clamp, with rubber isolator in place.
- 4) Push top of clamp over two posts on base of clamp. (Only hand tight)



STRUT CLAMPS (Variable size)

#257-P (3/8"-1"CTS), #287-P (1"-2"CTS/IPS)

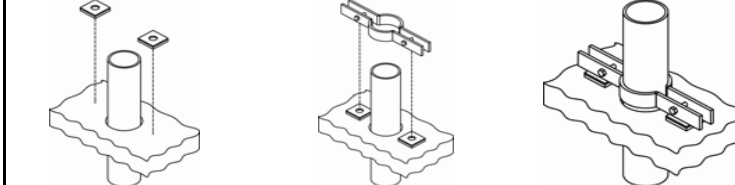
- 1) Insert base of clamp into strut/channel, twist 90° clockwise.
- 2) Optional: To increase grip, insert screw (provided) thru base of clamp.
- 3) Place tubing onto base of clamp, with rubber isolator in place.
- 4) Push top of clamp over two posts on base of clamp. (Only hand tight)



RISER CLAMP PAD

#276, #278

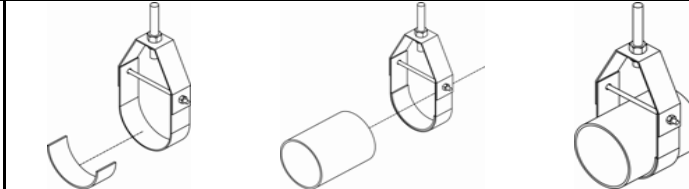
- 1) Put isolation pad in position for riser clamp or leg of equipment.
- 2) Install riser clamp or equipment leg on top of isolation pad.



ACOUSTICAL INSULATION LINER

#270, #271, Felt #8, Felt #100

- 1) Cut to desired length, sufficient to isolate piping from hanger or building surface.
- 2) Place isolation liner onto framing, bracket, hanger, etc.
- 3) Install piping into hanger or next to isolated surface.



"Converting Makeshift Plumbing Methods into Engineered Solutions"

393 Enterprise Street, San Marcos, CA 92078 Phone: 800.321.0316 Fax: 760.744.0507