

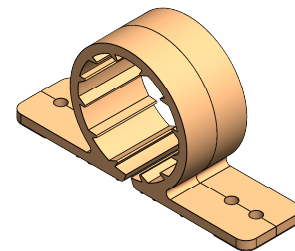
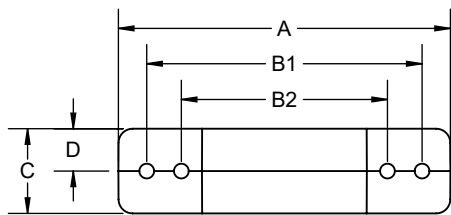
Product Submittal	
Name	
Date	
Architect/Owner	
Contractor	
Tag	
Notes	

## HoldRite® Standard Clamps Specification Sheet/Drawing

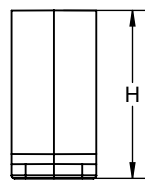
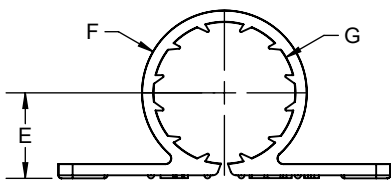
The HOLDRITE #23X Series Standard Clamps are designed to support 1/2" through 2" tubing. Helps to eliminate noise transfer and isolates against dissimilar metal contact. Compatible with Copper, PEX, CPVC and other tubing.

### Product Information:

- Material:  
Polypropylene, Tan, #231 thru #236 (CTS)  
Polypropylene, Gray, #237 & 238 (IPS)
- Suspension clamp mounts to HOLDRITE Stout Brackets®, #170 Series Brackets, or flush mounted to walls/joists to support Copper, PEX and CPVC tubing



#233 SHOWN



MODEL	SIZE	A	B1	B2	C	D	E	F	G	H
#231	1/2"	2.14	1.63	----	.69	.34	.50	Ø.94	Ø.76	.97
#232	3/4"	2.94	2.44	1.64	.70	.35	.62	Ø1.19	Ø1.01	1.22
#233	1"	2.94	2.44	1.83	.75	.38	.76	Ø1.46	Ø1.26	1.49
#234	1-1/4"	2.99	2.44	----	.84	.42	.90	Ø1.74	Ø1.52	1.77
#235	1-1/2"	3.75	3.25	2.50	.88	.44	1.03	Ø2.00	Ø1.77	2.03
#236	2"	3.75	3.25	----	.99	.49	1.28	Ø2.51	Ø2.27	2.54
#237	1-1/2"	3.75	3.25	----	.88	.44	1.16	Ø2.27	Ø2.04	2.30
#238	2"	3.75	3.25	----	.99	.49	1.41	Ø2.76	Ø2.52	2.79