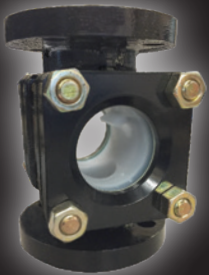


ChemTite[®]

PFA Lined for Severe Duty

BALL CHECK VALVES



FEATURES

- Heavy Duty PFA Liner Resists Cracking
- Dovetail Locking Grooves for PFA Retention
- Size Range: 1" to 6"
- Pressure Rating: Full Vacuum to 250 psig (17.23 bar)
- Operating Temperature: (-)20°F to (+)400°F
- UV Resistant Epoxy Coating
- Eliminates & Prevents
 - Back-Flow of Liquids in Pipelines
 - Pump Impeller Rotation in Opposite Direction
 - Siphoning of Pumps
- Resistant To:
 - All acids
 - All solvents
 - All bleach solutions
 - All phenols
 - All caustics
 - All peroxides
 - All organic and inorganic chlorides & sulfates

THE ORIGINAL IN THE USA

Since 1931, Hills-McCanna[®] has earned a reputation for innovative products that serve demanding applications better than before. Today, the Hills-McCanna[®] legacy continues with the ChemTite[®] series. ChemTite[®] products are built with American quality for peace of mind and dependability in tough chemical applications.



*Designed, Engineered,
Fluoropolymer Lined and
Assembled in the USA!*



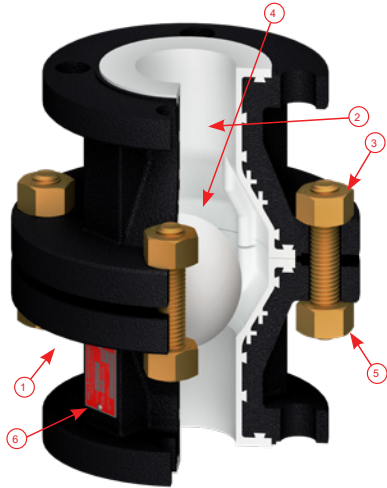
Phone: (616)554-3900
Fax: (616)554-9308

Hills-McCanna[®]
an ANDRONACO INDUSTRIES company

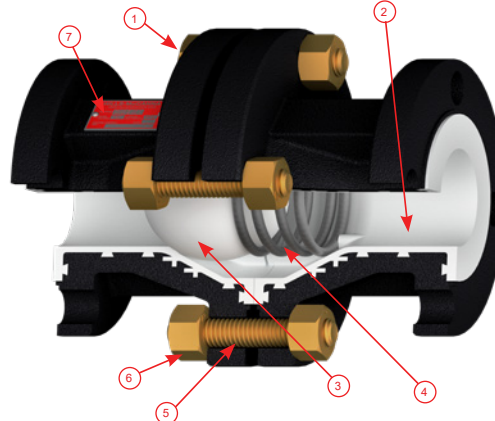
ChemTite®

PFA Lined for Severe Duty

BALL CHECK VALVES



For Vertical Applications



PFA-encapsulated spring-loaded option for horizontal service

Parts List

ITEM	QTY	DESCRIPTION	MATERIAL
1	2	CHECK VALVE BODY HALF	ASTM A395 DCI
2	1	LINER	PFA
3	4-8	STUD	YELLOW ZINC PLATED ASTM A193 Gr. B7
4	1	CHECK VALVE BALL	VIRGIN PTFE
5	8-16	HEX NUT	YELLOW ZINC PLATED ASTM A194 Gr. 2H
6	1	NAME PLATE	STAINLESS STEEL

Spring Loaded Parts List

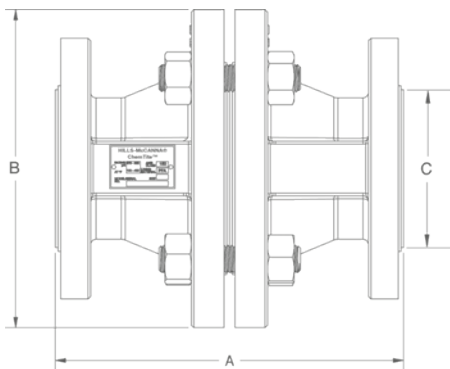
ITEM	QTY	DESCRIPTION	MATERIAL
1	2	CHECK VALVE BODY HALF	ASTM A395 DCI
2	1	LINER	PFA
3	1	CHECK VALVE BALL	VIRGIN PTFE
4	1	SPRING	PFA ENCAPSULATED 302 STAINLESS STEEL
5	4-8	STUD	YELLOW ZINC PLATED ASTM A193 Gr. B7
6	8-16	HEX NUT	YELLOW ZINC PLATED ASTM A194 Gr. 2H
7	1	NAMEPLATE	STAINLESS STEEL

Sizes

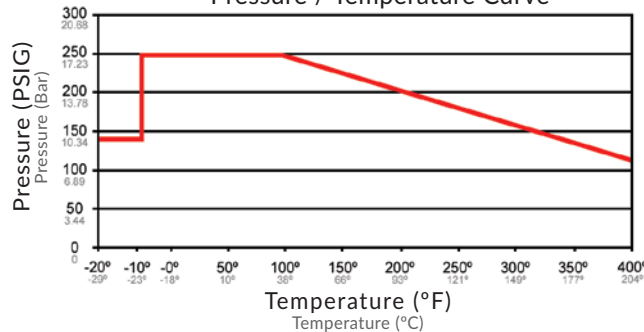
SIZE	(A) LENGTH	(B) DIAMETER	(C) FLARE DIAMETER
1"	6"	5½"	2"
1½"	7"	6½"	2½"
2"	8"	7-5/16"	3"
3"	9½"	9-7/8"	5"
4"	11½"	11¼"	6 - 5/16"
6"	14"	15½"	8"

Cv Data

VALVE SIZE	FULL OPEN Cv
1"	17
1½"	51
2"	73
3"	140
4"	244
6"	530



Pressure / Temperature Curve



Hills-McCanna® information is based on technical data and testing that Hills-McCanna® believes to be reliable and is subject to change without notice. The information is intended for use by persons having technical skill, and at their own discretion and risk. Since conditions of product are outside of Hills-McCanna® control, Hills-McCanna® makes no warranties, express or implied, and assumes no liability in connection with any use of this information. Hills-McCanna® is a registered trademark of Hills-McCanna, LLC.

ChemTite® BALL CHECK VALVES