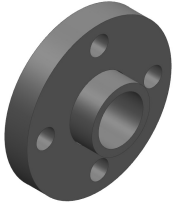
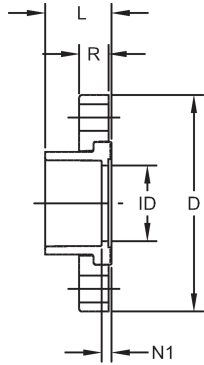


## Van Stone Flange (S)



- ANSI 150 Class according to ANSI B16.5
- 1/2" - 12" pressure rating is 150 psi @ 73°F (10.3 bar @ 22.7°C)
- 14" - 24" pressure rating is 100 psi @ 73°F (6.9 bar @ 22.7°C) - Steel Ring
- HC = Honeycomb (Front)



Size (inch)	P/L	Code	Pack Qty	# holes	Bolt Dia. (inch)	bolt cir. dia. (inch)	D (inch)	L (inch)	N1 (inch)	R (inch)	ID (inch)	Design
1/2	25	<b>9854-005</b>	5	4	1/2	2.38	3.53	1.10	0.18	0.57	0.60	HC
3/4	25	<b>9854-007</b>	5	4	1/2	2.75	3.87	1.23	0.18	0.59	0.82	HC
1	25	<b>9854-010</b>	5	4	1/2	3.13	4.25	1.38	0.20	0.66	1.03	HC
1 1/4	25	<b>9854-012</b>	5	4	1/2	3.50	4.62	1.52	0.21	0.69	1.36	HC
1 1/2	25	<b>9854-015</b>	5	4	1/2	3.88	5.01	1.68	0.25	0.75	1.60	HC
2	25	<b>9854-020</b>	5	4	5/8	4.75	6.02	1.84	0.29	0.82	2.06	HC
2 1/2	25	<b>9854-025</b>	5	4	5/8	5.50	7.01	2.15	0.33	0.98	2.49	HC
3	25	<b>9854-030</b>	5	4	5/8	6.00	7.50	2.33	0.39	1.02	3.09	HC
4	25	<b>9854-040</b>	5	8	5/8	7.50	8.99	2.75	0.24	1.10	4.06	HC
6	25	<b>9854-060</b>	2	8	3/4	9.50	10.98	3.55	0.48	1.25	6.11	HC
8	25	<b>9854-080</b>	2	8	3/4	11.75	13.51	4.60	0.51	1.71	8.00	HC
10	02	<b>9854-100</b>	2	12	7/8	14.25	15.97	5.66	0.53	1.73	10.10	HC
12	02	<b>9854-120</b>	2	12	7/8	17.00	18.95	6.71	0.57	1.72	11.96	HC
14	A34	<b>9854-140N</b>	1	12	7/8	18.75	21.00	11.75	4.75	0.50	12.50	FAB
16	625	<b>9854-160N</b>	1	16	1	21.25	23.50	13.50	5.50	0.50	14.31	FAB
18	A34	<b>9854-180N</b>	1	16	1 1/8	22.75	25.00	14.50	5.50	0.50	16.13	FAB
20	A34	<b>9854-200N</b>	1	20	1 1/8	25.00	27.50	17.25	7.25	0.50	18.00	FAB
24	A34	<b>9854-240N</b>	1	20	1 1/4	29.50	32.00	19.50	7.50	0.50	21.56	FAB

The technical data are not binding. They neither constitute expressly warranted characteristics nor guaranteed properties nor a guaranteed durability. They are subject to modification. Our General Terms of Sale apply.

Georg Fischer Piping Systems Ltd, Postfach, CH-8201 Schaffhausen/Switzerland

Phone +41 -(0)52-631 1111

e-mail: [info.ps@georgfischer.com](mailto:info.ps@georgfischer.com)

Internet: <http://www.gfps.com>