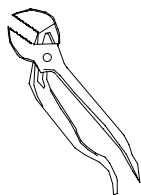


UNIVERSAL FILTER KIT - EWF3001 INCLUDES

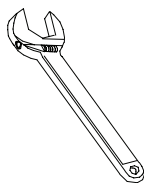
- Numbered components
- Step by step installation guide
- Line drawings of each step w/ numbered components

NUMBERED COMPONENTS:

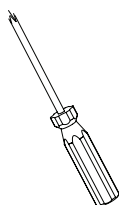
1. Filter Head and Bracket
2. 71300C WaterSentry Filter
3. Mounting Screws
4. Angle Stop Valve
5. Tubing, 3/8" Poly
6. Tubing, 1/4" Poly
7. Manual

**TOOLS REQUIRED:**

Groove joint pliers



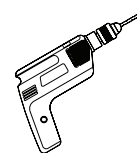
Wrench



Screwdriver



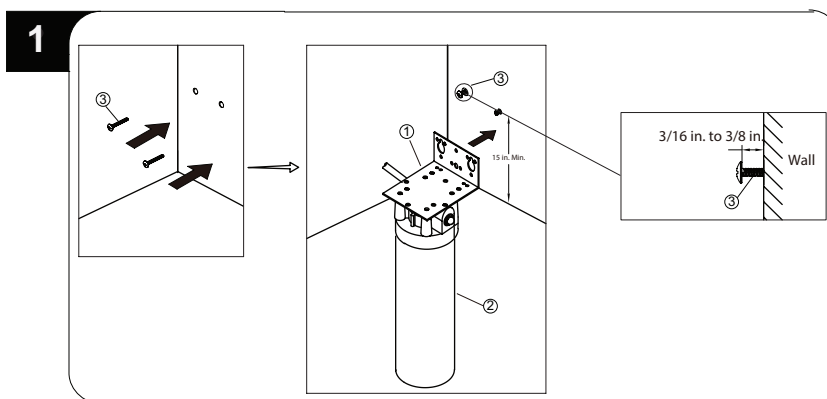
Safety goggles



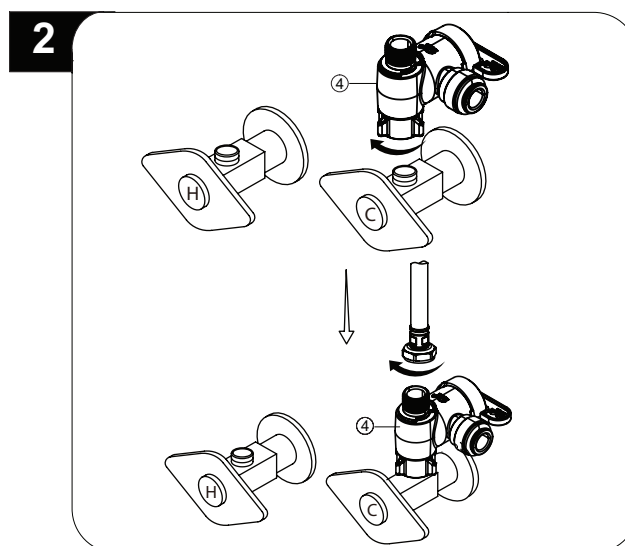
Electric drill

Patent zurn-elkay.com/patents**⚠ WARNING:** Cancer and Reproductive Harm - www.P65Warnings.ca.gov**⚠ ADVERTENCIA:** Cáncer y daño reproductivo - www.P65Warnings.ca.gov**⚠ AVERTISSEMENT:** Cancer et effets néfastes sur la reproduction - www.P65Warnings.ca.gov

INSTALLING UNIVERSAL FILTER KIT:

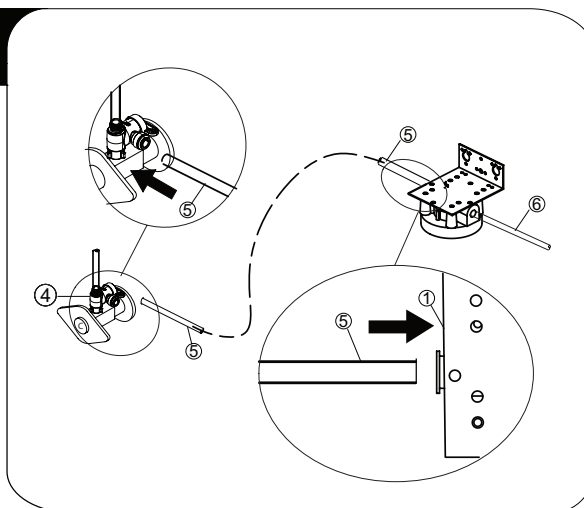


1. Before installation, select the location for the filter bracket and head (1). The screws should be placed a minimum of 15 in. above the bottom of the floor where the filtration system is to be mounted. Any distance lower than 15 in. may result in the filter (2) interfering with the floor of the cabinet when removing the filter for replacement. Use the filter bracket and head (1) as a template to mark the screw hole locations where the screws are to be installed. Install screws into the wall, leaving 3/16 in. to 3/8 in. clearance between the head of the screw and wall. Hang the filter head (1) on screws (3) and tighten.



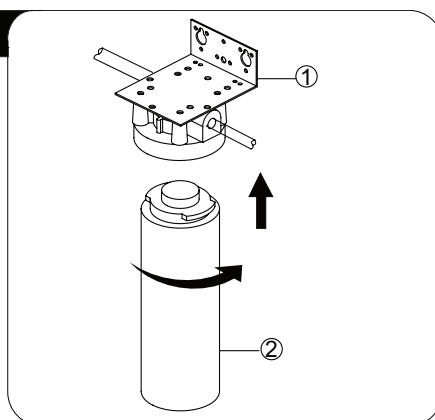
2. Attach the angle stop valve (4) onto the outlet of the cold water supply valve and tighten by hand. Do not overtighten. Thread the nut on the cold water supply line onto the angle stop valve tee connector (4) and tighten with wrench. Do not overtighten.

3



3. Insert the one end of the 3/8" tubing (5) into the valve (4). Trim the tube to length and insert the other end into the inlet side of the filter head. Pull moderately to ensure the connection has been made. If it is necessary to remove the tube, press the ring on the quick connector in while pulling the tube to disconnect. Connect one end of the 1/4" tubing (6) to the outlet of the filter head pull moderately to ensure the connection has been made. Trim the tube to length and connect to your faucet.

4



4. Install the filter (2) onto the filter head (1). After the thread of the filter (2) is completely screwed into the filter head (1), installation is complete.
5. After connection is completed, turn on the cold water supply valve and check for leaks. Turn on the faucet (cold) and flush the system for ten minutes. This removes any harmless particles and air that may be present.

PREPARATION FOR FILTER REPLACEMENT:

1. Clear the space around and under the filter to allow access to and removal.
2. Turn the cold water supply valve to the off position.
3. Turn on the faucet to relieve any remaining water pressure. For filter replacement instructions, filter capabilities, and warranty information, review the Performance Data Sheet.

REPLACEMENT FILTER OPTIONS

ELKAY Part No. 71300C — PFOA/PFOS and Lead Reduction Filter

Change every 2,250 gallons, or once a year – whichever occurs first.