



FIELD SUPPLIES



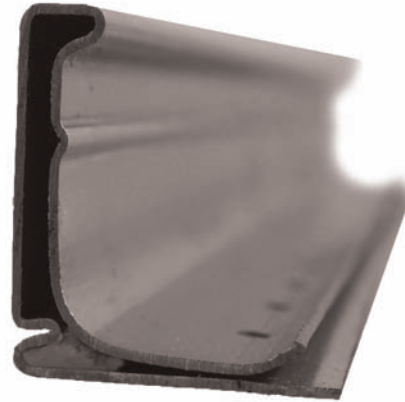
WHERE QUALITY MATTERS
WHERE QUALITY MATTERS



The Contractor's Choice / America's Choice
Corporate: (800) 503-9805 Fax: (201) 964-9030
www.elgenmfg.com



New Products



Punched Flange

U.S. Patent 9,212,770; Canadian Patent 2,638,806;
U.S. Patent Pending - Application No. 14/947,743



Spiral Elbows



Two-way Gripper



Long-tab Access Door

Table Of Contents



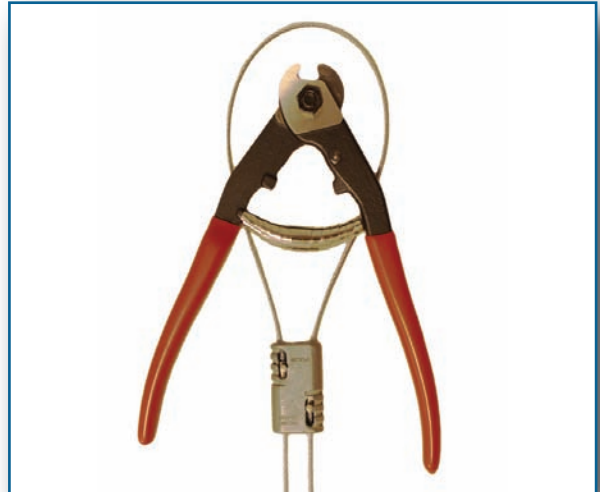
Two-Way Wire Gripper	Page 1
Spiral Elbows	Page 2
High Quality Fittings	Page 3
Conical & Press-on Collar	Page 4
HETO	Page 5
Snap Lock Pipe & Fittings	Page 6
Round Saddle / Damper Blades	Page 7
Duct Protection Film	Page 8
Access Doors	Page 9
Sealants & Adhesives	Page 11
FSK/Aluminum Tapes	Page 12
C & F Cleats	Page 13
4 Bolt Connection Accessories	Page 14
Strut & Hangers	Page 15
Louvers & Fire Dampers	Page 17
Stainless Steel & Nylon Straps	Page 18
Tek Screws	Page 19
Fasteners & Hardware	Page 20
Tools	Page 22
Cross Reference	Page 23
Improved Packaging	Page 24



Two - Way Wire Gripper



Two-Way Wire Gripper



Wire Cutter

WORKING LOADS:
125 LBS - 250 LBS - 650 LBS

ASTM E8 & A370 Approved



100 PC Starter Kit

**TENSILE TESTED
BY INERTEC
TO ASTM A370**

**VERIFIED BY SMACNA
TESTING & RESEARCH
INSTITUTE AS AN APPROVED
DUCT HANGER SYSTEM
PRESCRIBED IN THE SMACNA
HVAC DUCT CONSTRUCTION
STANDARDS (HVAC-DCS).**



Wire Rope with 3" Loop



500' Wire Rope on Spool





1 X CENTERLINE ELBOWS

26 GA

90° and 45°

4" - 24" Round

3" Straight in and Out

Airtight Lock-Seam Construction

Optional Construction

G90 Galvanized & Aluminum

Galvaneal (Paint Grip) & Agion (Antimicrobial Coating)



1.5 X CENTERLINE ELBOWS

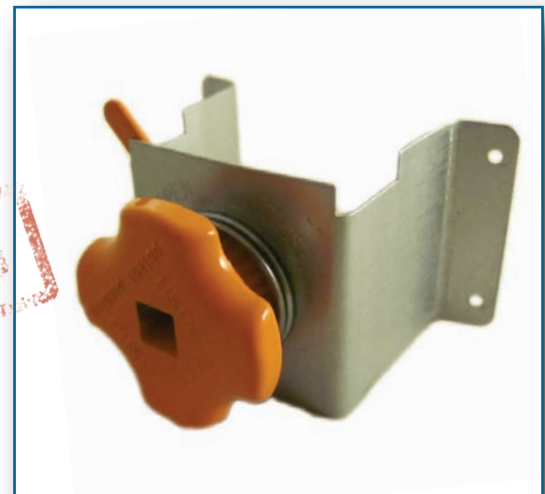
ZERO-LEAK SNAP-IN BUSHING



- Zero Air Leakage - at +40" W.G.
- Zero Rattle
 - Durable, but Flexible Material
 - Comes Standard on ALL Our Stand-off-Equipped Fittings

SUPER STANDOFF

- All Metal Construction
- One Hand Operation
- No Wing Nut to Come Loose
- No Need for Additional Balancing
- No Need To Search for a Handle Through Insulation
- No Rattle





Conical & Press-on Collar



With Volume Damper



With Shaft Extension



With HD Standoff and 3/8" Square Rod

PRESS-ON COLLAR

Made from a Single Piece of 24 GA Metal

Stitch Welded Seam for Added Strength & Low Leakage

1" Flange

1/8" x 1" Polyethylene "High Density" Gasket

Stainless Steel & Aluminum

CONICAL

26 GA - 24 GA

Stitch Welded Seam for Added Strength & Low Leakage

1" Flange

1/8" x 1" Polyethylene "High Density" Gasket

Stainless Steel & Aluminum

Options

- Volume Damper
- Heavy Duty Standoff
- Shaft Extension



Without Volume Damper



With Shaft Extension



With HD Standoff and 3/8" Square Rod





Without Volume Damper

26 GA - 24 GA

1/8" x 1" Polyethylene
"High Density" Gasket

Welded Seam For Added Strength
&
Low Leakage

Stainless Steel & Aluminum

Options

- Volume Damper
- Heavy Duty Standoff
- Shaft Extension



With Volume Damper



With Shaft Extension



**With Heavy Duty
Standoff and 3/8" Square Rod**



CENTER-HIGH HETO



45° TILTED HETO

Snap Lock Pipe & Fittings



SNAP-LOCK PIPE

30 GA - 26 GA - 24 GA
2' & 5' Lengths
3" - 24" Round

Stainless Steel & Aluminum



ADJUSTABLE ELBOW-TAP

26 GA - 24 GA
3" - 24" Round

Stainless Steel & Aluminum

Options
Volume Damper
Heavy Duty Standoff
Shaft Extension



ADJUSTABLE ELBOW

26 GA - 24 GA
3" - 24" Round

Stainless Steel & Aluminum

Welded Seam For Added Strength
&
Low Leakage



BELLMOUTH COLLAR (High Pressure)

3" - 24" Round

Stainless Steel & Aluminum

Options
Volume Damper
Shaft Extension



REDUCER

26 GA - 24 GA
6" x 4"
8" x 6"
10" x 8"
12" x 10"
14" x 12"

Welded Seam
for Added Strength &
Low Leakage



DAMPER SLEEVE

20 GA - 26 GA
3" - 24" Round

Welded Seam For Added Strength
&
Low Leakage

Stainless Steel & Aluminum





Round Saddle / Damper Blades



Large Flange Type

ROUND SADDLE

26 GA - 24 GA
3" - 24" Round

Conical Type

Stainless Steel & Aluminum

Curved Press-on Type

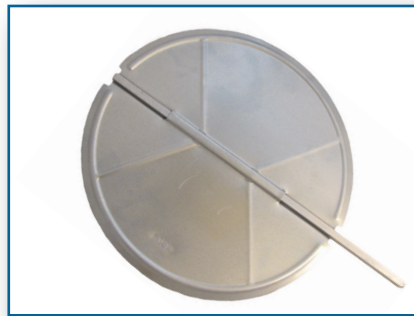
Spiral Coupling

HETO Type



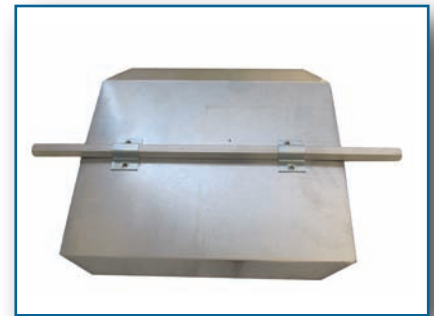
DAMPER BLADE

26 GA
4" - 24" Round
Stainless Steel & Aluminum
wing nut / handle / washer sold separately



HEAVY DUTY DAMPER BLADE (WITH OR WITHOUT ROD)

4" - 8" - 22 GA
10" - 16" - 20 GA
Stainless Steel & Aluminum



SQUARE DAMPER BLADE (WITH 3/8" SQUARE ROD)

26 GA - 24 GA - 22 GA
Stainless Steel & Aluminum



Duct Protection Film



ADVANTAGES OF ELGEN'S WRAP

- No Need To Tape
- No Loose Ends Flapping
- Easy On/Easy Off
- Does Not Leave Any Residue
- Resists Tearing Due To Its High Rubber Content

Designed To Adhere To The Following Sheet Metals:

- Galvanized/Stainless Steel/Aluminum/
Black Iron/Galvanneal (Paint grip)/
PCD Coated



Customizable with Your Logo

Available Sizes

Rolls
2' - 3' - 4' - 5'

Available Thickness

2 mil - 3 mil - 4.5 mil

Available Colors

Blue - Clear - Black - Green - Red - Orange

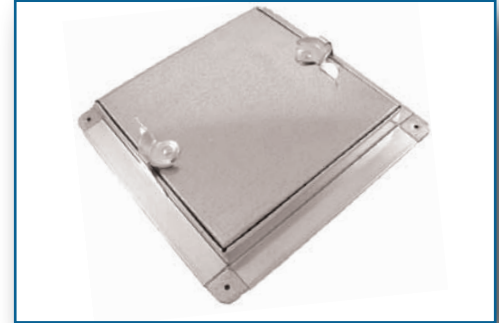
Custom Colors and Sizes Available





**Tab Door - Cammed
"B" Door**

Stock Sizes	
6" x 6"	18" x 18"
8" x 8"	20" x 20"
10" x 10"	24" x 24"
12" x 12"	16" x 12"
14" x 14"	24" x 12"
16" x 16"	



**Press-On Door - Cammed
"C" Door**

**6" To 14" - 10 Per Box
16" To 24" - 6 Per Box**

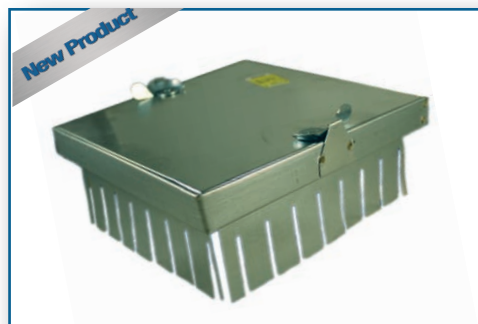
**24 Hour Turnaround
For Custom Sizes & Alloys
Stainless Steel & Aluminum**



**Tab Door - Hinged & Cammed
"A" Door**



**Press-On Door - Hinged & Cammed
"H" Door**



Long-Tab Door



Water Based Duct Sealer

73% Solids

UL 181 Listed

Qualifies for LEED EQ 4.1 Credits

**New square bucket reduces damage
in transit, and takes up less space**



Duct Sealer 10.3 oz Tube



100% Silicone



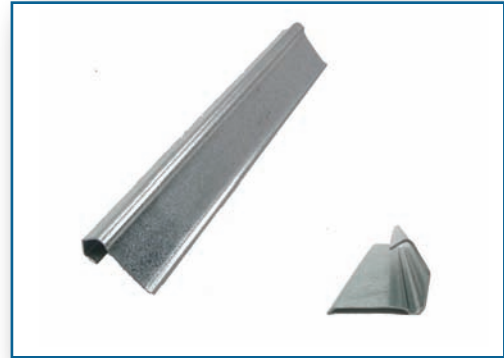
Paint Brush



Caulking Guns



E-55 Cleat
22 GA & 20 GA
Box Qty - 250
SS/SS#304 - SS/SS#316
Aluminum - PCD Coated
Galvanneal (Paint Grip)
Available In 6 - Pcs Breakaway Strip



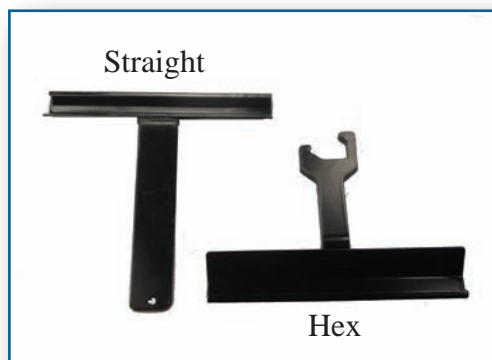
Universal Cleat
22 GA & 20 GA
Box Qty - 300
SS/SS#304 - SS/SS#316
Aluminum - PCD Coated
Galvanneal (Paint Grip)
Available In 6 - Pcs Breakaway Strip



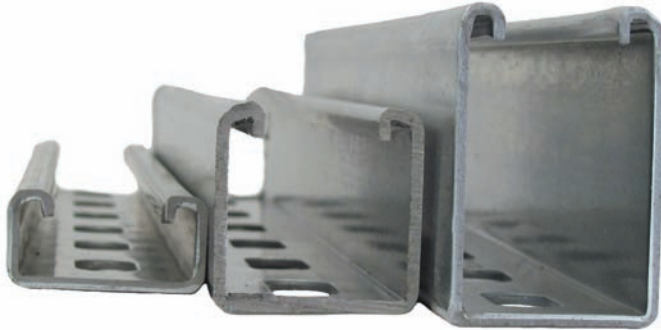
F-Cleat
20 GA
Box Qty - 500
Stainless Steel & Aluminum



PVC-Cleat
Optional Profiles
J/C - F - Elgen Flange
Used For Breakaway Connections
Box Qty - 500



Cleat Tools



Back-to-Back Welded Strut

STRUT CHANNEL



Spring Nuts



U-Clamps



90° Brackets



Saddle Washer



Square Washer

Available Sizes

13/16" - 1-5/8" - 2-7/16" - 3-1/4"

In Stock - 10' & 20' Lengths
Cut To Length Available Upon Request

12 GA - In Stock

14 GA - In Stock

SS/SS#304 - SS/SS#316

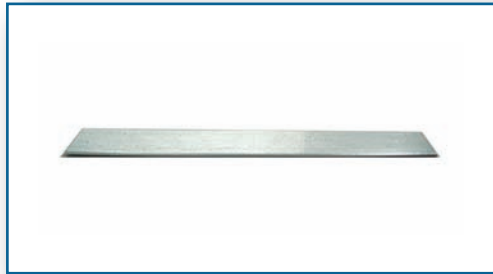
Aluminum - Painted

Galvanneal (Paint Grip)



Clevis Hanger

Strut & Hangers



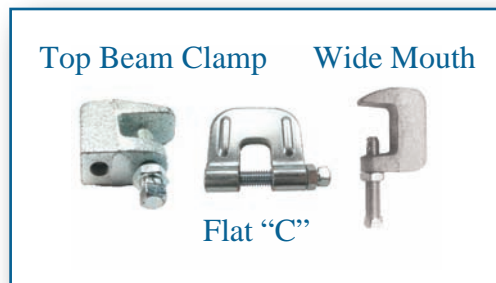
1" Hanger Strap

In Stock 16 GA - 18 GA
20 GA - 22 GA - 24 GA
10' Lengths
Other Gauges Available Upon Request
Stainless & Aluminum



Strap Hangers

All Sizes Available



Beam Clamps

All Sizes Available
Stainless Steel



Hanger Strap Bracket



**Hex Nut & Washer
Threaded Rod Couplings**

All Sizes Available
Stainless Steel & Aluminum



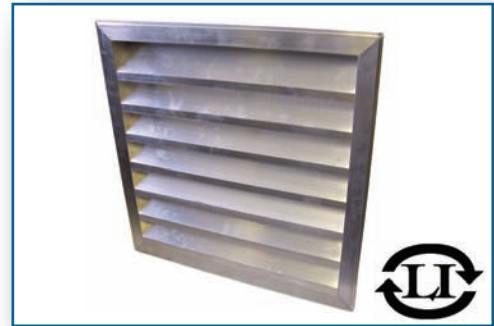
Threaded Rod

All Sizes Available
Stainless Steel & Aluminum





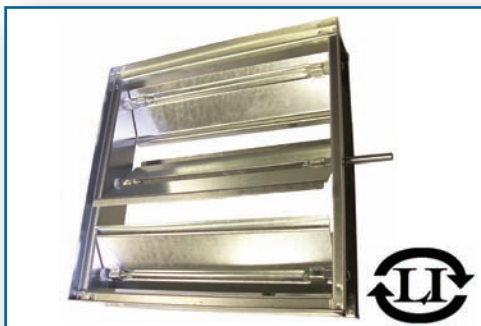
Fire Damper
All Sizes Available



Louver
All Sizes Available



Firestop Sealant



Air Control Damper
All Sizes Available



Punched Angle
1-1/2" x 1-1/2"
2" x 2"
16 GA - 14GA

Stainless Steel & Nylon Straps



Stainless Steel Flex Ties
Sizes for 6", 8", 10", 12", 16", and 20" Round



Nylon Straps
36" and 48" Long



Nylon Strapping Tool



Uninsulated Flex Duct



Insulated Flex Duct



SELF DRILLING SCREW



“Sharp Point” - Won’t Run On Light Gauges

“Hardened Point” - Will Drill Through Up To 3/16” Thick Steel

“Highest Head In The Industry” To Seat Better In The Magnetic Chucks

“Simply Put - We Feel It Is The Best Screw In The Industry”

In Stock
Stainless Steel
Aluminum



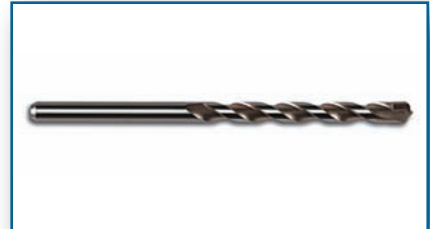
Fasteners & Hardware



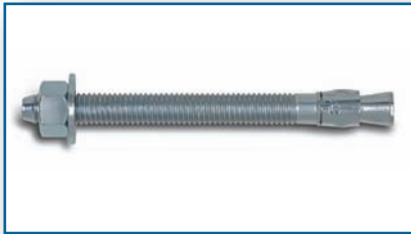
Sawzall Blades



**SDS Drill Bit
For Concrete**



**High Speed Drill Bits
For Steel**



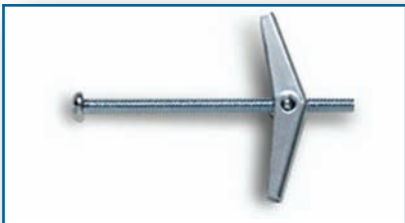
Stud Anchor



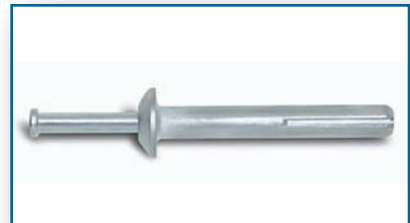
Wire Mesh
1/2" X 1/2" Holes
4' - 5' Lengths
Welded & Galvanized
16 GA - 19 GA
SS/SS#304 - SS/SS#316
Aluminum



Wedge Anchor



Toggle Bolt



Nail



Drop-In Anchor



Double Expansion Anchor

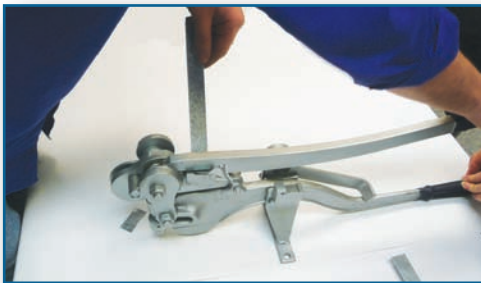




**Genie Superlift Contractor
Genie Super Hoist**



Vermette Lift



Multi Tool



Kett Shear



**Kett-Shear
For Cutting Spiral Pipe**



Uni-Shear



Cross Reference

	ELGEN	PAGE
MBX4-100	ZLL-3-3-3	31
MFN4-100	ZLN-3-3-3	31
MFT4-100	ZLSG-3-3-3	31
MFD4-100	ZLH-3-3-3	31
MB6X4-100	ZLL-3-6-3	31
MF6N4-100	ZLN-3-6-3	31
MF6D4-100	ZLH-3-6-3	31
MF6T4-100	ZLSG-3-6-3	31
EBX-100	SLUL	31
EFN-100	SLUN	31
JBX-100	SLRL	31
JRN-100	SLRN	31
JRD-100	SLRH	31
MBX4X4X4	ZLL-4-4-4	31
MFN4X4X4	ZLN-4-4-4	31
	ZLN-4-6-4	31

	ELGEN	PAGE
SRST 1-148	E-121	41
SRST 1 1/2-148	E-122	41
SRST 2-148	E-123	41
SRST 1-388	E-124	41
SRST 1 1/2-388	E-125	41
SRST 2-388	E-126	41
SRST 1-128	E-127	41
SRST 1 1/2-128	E-128	41
SRST 2-128	E-129	41

	ELGEN	PAGE
K-2	RP-2X	39
KR-3	RP-3	39
K-4	RP-4	39
K-5	RP-5	39
KL-7	RP-5C	39
KL-7R	RP-5CR	39
KS-145	EDR-2X	36
KS-145L	EDR-2XL	36
KSR-195	EDR-3	36
KSR-195L	EDR-3XL	36
KS-385	EQR-4	38
KS-12	EQR-5	38

	ELGEN	PAGE
BKO-4	DOL-1/2K	44
BK-2	DSC-550	44
BKP-814	AL-1	46
BKP-22	OL-1	46
BKP-24	DP-7	46
BKP-25	DP-1	46
BKP-10	DP-4	49
BKP-13	DA-1	49
BKP-5	DA-2X	45
BKP-6	DA-3X	45
BKP-7	DA-4X	49
SRP-14	DC-15	48
SRP-40	SPL-10	48
TH-1	TH-7	48
KP-25	RC-3	48
KP-26	RC-4	48

	ELGEN	PAGE
SB-114	E-100	40
SB-138	E-101	40
SB-112	E-102	40
SB-314	E-103	40
SB-338	E-104	40
SB-312	E-105	40
SR-140	E-106	40
SR-380	E-107	40
SR-120	E-108	40
SRH-240	E-109	40
SRH-280	E-110	40
SRH-220	E-111	40
SR-148	E-112	40
SR-388	E-113	40
SR-128	E-114	40
SRH-248	E-115	40
SRH-288	E-116	40
SRH-228	E-117	40

	ELGEN	PAGE
VR-2	EVR-1	28
JVR-2	EVR-2	28
	ELR-5	43

	ELGEN	PAGE
ESO-14-100	EE-121	41
ESO-14-150	EE-122	41
ESO-14-200	EE-123	41
ESO-38-100	EE-124	41
ESO-38-150	EE-125	41
ESO-38-200	EE-126	41
ESO-12-100	EE-127	41
ESO-12-150	EE-128	41
ESO-12-200	EE-129	41

	ELGEN	PAGE
JB-1	RP-1	37
KP-6	RP-6	37
KP-6L	RP-6XL	37
KP-7	RP-7	37
KP-7L	RP-7XL	37
KP-8S	RP-8X	37
KP-8L	RP-8XL	37
KP-8XL	RP-8XXXL	37
KP-9S	RP-9	37
KP-9L	RP-9XL	37
KP-9XL	RP-9XXXL	37
KP-10R	RP-10	37
KP-10S	RP-11	37

	ELGEN	PAGE
RS-156	E-69	37
RS-256	E-70	37
RS-356	E-71	37
RB-50	E-708	37
RB-25	E-702	37
RP-1	E-705	37
RP-2	E-706	37
RP-3	E-704	37
KS-7	ESR-1	36

	ELGEN	PAGE
SP-5	#10	42
SP-10	#15	42
SP-20	#20	42
	#20-L	42
	#30	42



Improved Packaging



Our Ultra Vane packaged in a crate similar to the one shown.



All of our superior quality fittings are wrapped with a protective film before leaving our facility.

All Snap Lock Pipe will come delivered in crates.

