

Eight[®]

Insect Control

TRUSTED SINCE 1926

BONIDE[®]

Garden & Home^{II}

Ready to Use

Kills over 130 insect pests

For lawns, vegetables, trees,
shrubs and ornamentals

Kills on contact

ACTIVE INGREDIENT:

Lambda-cyhalothrin 0.002%

OTHER INGREDIENTS: 99.998%

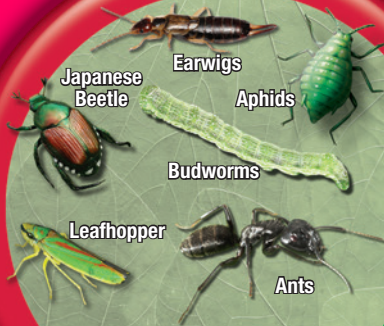
TOTAL 100.000%

EPA Est. No. 4-NY-1 EPA Reg. No. 4-467

For use outdoors around the home only

Keep Out Of Reach Of Children

CAUTION (See back booklet for additional
Precautionary Statements & First Aid)





Garden & Home^{II}

Ready to Use

- ✓ Kills on contact
- ✓ For use on vegetables, roses, lawns, flowers, shrubs, trees and other outdoor plants and surfaces
- ✓ Kills over 130 insects/pests without harming plants
- ✓ Convenient to use as a spot treatment

Store and transport in an upright position.
EPA Reg. No. 4-467 EPA Est. No. 4-NY-1
Buyers Guarantee Limited to Label Claims.
©Bonide Products, LLC, All Rights Reserved
Distributed by: Bonide Products, LLC
6301 Sutliff Road, Oriskany, NY 13424

BN

DIRECTIONS FOR USE

It is a violation of Federal law to use this product in a manner inconsistent with its labeling.

STOP - READ ENTIRE LABEL BEFORE USE.

Do not allow children or pets into the treated area until dry.

In New York State, this product may not be applied to lawns within 100 ft. of a coastal marsh, or stream that drains directly into a coastal marsh.

Do not water the treated area to the point of run-off. Do not make applications during rain. All outdoor applications must be limited to spot or crack-and-crevice treatments only, except for the following permitted uses:

- (1) Treatment to soil or vegetation around structures;
- (2) Applications to lawns, turf, and other vegetation;
- (3) Applications to building foundations, up to a maximum height of 3 feet.

Other than applications to building foundations, all outdoor applications to impervious surfaces such as sidewalks, driveways, patios, porches and structural surfaces (such as windows, doors, and eaves) are limited to spot and crack-and-crevice applications only.

APPLICATION INSTRUCTIONS

- Shake well before each use.
- To avoid extreme wetting and waste of product, adjust nozzle to narrow fan spray. Hold sprayer about 1 foot from plant and spray just enough to cover the area that is to be treated.

SPRAYER DIRECTIONS

- Remove sprayer wand from the holster and pull sprayer cord **ALL THE WAY OUT**.
- Cut cable tie which holds pump handle.
- Rotate pump handle clockwise to unlock.

- Pump handle until pressure has built up in container.
- Squeeze lever on sprayer wand to spray product.
- Push handle down, rotate counterclockwise to lock in place.

NOTE: This product will not stain most home siding. However, before using, it is recommended to test on the siding (vinyl in particular) in an area that is not readily visible. Recheck after a few hours. If any staining is observed, DO NOT use.

LAWNS	
SURFACE INSECTS	APPLICATION INSTRUCTIONS
Ants* Armyworms Cockroaches (German & American) Crickets Cutworms Earwigs European crane flies Fleas Fruit flies Green June beetles Lawn moths (sod webworms) Millipedes Palmetto bugs Sowbugs Mites Spittlebugs Springtails Deer ticks (which may transmit Lyme Disease) Water bugs	A few hours prior to application, completely wet the grass, and apply as a thorough coverage spray. One quart will treat 62.5 sq. ft. For ideal control of surface insects, postpone additional watering or mowing for 24 hours. Treat ants and other insects when they begin to appear or when you notice lawn damage. Do not apply more than 10 times per location, per year.
*Allegheny mound, Argentine, Black carpenter, Cornfield, Field, Florida carpenter, Harvester, Honey, Pavement, Southern, Sugar, Nuisance.	

OUTDOOR PESTS**INSECTS****APPLICATION INSTRUCTIONS**

Ants*	To significantly reduce the potential for entry by crawling pests, apply a constant band of insecticide around building foundation. Apply as a spot or crack-and-crevice spray around windows, doors, eaves, vents and other areas. For more effective treatments, remove debris, leaf litter and other matter that is adjacent to the foundation that could possibly harbor pests. Apply a 3 ft. band around the structure and upwards along the foundation to 3 feet. Apply as a spot or crack-and-crevice spray around windows, doors, and roof overhangs. For the insecticide to reach the soil or thatch layer where pests may be active, apply as a coarse spray to completely wet the foundation and/or band area. 1 quart will treat 62.5 sq. ft. of surface area.
Centipedes	
Cockroaches	
Crickets	
Fleas	
Flies	
Gnats	
Millipedes	
Mosquitoes	
Pillbugs	
Scorpions	
Sowbugs	
Spiders	
Deer ticks	

*Allegheny mound, Argentine, Black carpenter, Cornfield, Field, Florida carpenter, Harvester, Honey, Pavement, Southern, Sugar, Nuisance.

OUTDOOR SURFACES**INSECTS****APPLICATION INSTRUCTIONS**

Ants*	Make a residual application to ornamental plants adjacent to foundations of building. Apply as a spot or crack-and-crevice spray to surfaces such as, but not limited to porches, screens, window frames, eaves, patios and garages where these pests are active.	
Centipedes		
Cockroaches		
Crickets		
Fleas		
Flies		
Gnats		Works for up to 8 weeks on vinyl siding.
Millipedes		
Mosquitoes		
Pillbugs		

OUTDOOR SURFACES Cont.

INSECTS	APPLICATION INSTRUCTIONS
Scorpions Sowbugs Spiders Deer ticks	

*Allegheny mound, Argentine, Black carpenter, Cornfield, Field, Florida carpenter, Harvester, Honey, Pavement, Southern, Sugar, Nuisance.

ORNAMENTAL TREES, SHRUBS & FLOWERS

APPLICATION INSTRUCTIONS: Apply thoroughly as a foliar spray to both sides of plant leaves and all plant surfaces where insects are present. For optimum results, apply early prior to high insect populations.

NOTE: For **Scale** control, treat the whole plant, including the stem, trunks, and twigs.

For **Bagworm** control, apply when bagworm larvae start to hatch.

Use Site	Insects Controlled
For use on ornamental trees, shrubs and flowers such as, but not limited to: Ageratum, Ash, Aster, Arborvitae, Arizona Cypress, Azaleas, Begonia, Birch, Boxwood, Box Elder, Camellias, Cherry (ornamental), Non-bearing Citrus, Chrysanthemum, Carnation, Coleus, Common Ninebark, Conifers, Douglas Fir, Elm, English Ivy, Euonymus, Exacum, Weeping Fig, Fir, Gladioli, Gold Bells, Hawthorn, Holly, Honeysuckle, Hypoestes, Ivy, Juniper,	Ants*, Armyworms, Aphids, Azalea caterpillar, Bagworms, Black vine weevil (adult), Boxelder bugs, Broadmites, Brown softscale, Budworms, California oakworm, California redscale (crawlers), Cankerworms, Clovermites, Cockroaches, Crickets, Cutworms, Eastern tent caterpillar, Elm leaf beetles, European sawfly, Fall webworm, Flea beetles, Forest tent caterpillar, fungus gnat, Gypsy moth larvae, Japanese beetle (adults), June beetles (adults), Lace bugs, Leaf feeding caterpillars, Leafhoppers, Leafminers (adult), Leaf rollers, Leaf skeletonizers,

ORNAMENTAL TREES, SHRUBS & FLOWERS Cont.

Use Site	Insects Controlled
Lilac, Locust, Maple, Marigold, Mimosa, Mock Orange, Nannyberry, Oak, Orchid, Palm, Pansy, Pea Shrub, Petunia, Philodendron, Pine, Ornamental Plum, Poinsettia, Poplar, Tulip, Poplar, Rhododendron, Roses, Snapdragon, Snowberry, Spruce, Taxus, Willow, Zinnia.	Mealybugs, Midges, Oleander moth larvae, Pillbug, Pineneedle scale (crawler), Pine sawfly, Pine shoot beetles, Pinetip moths, Plant bugs, Root weevil, Sawfly, Scale insects (crawlers), Spiders, Spider mites, Spittlebugs, Striped beetles, Striped oakworm, Thrips, Tip moth, Tussock moth larvae, Whiteflies

*Allegheny mound, Argentine, Black carpenter, Cornfield, Field, Florida carpenter, Harvester, Honey, Pavement, Southern, Sugar, Nuisance.

VEGETABLES

APPLICATION INSTRUCTIONS: Apply for complete coverage, trying to hit the underside of leaves.

NOTE: Do not apply more than 5 times per growing season to corn. For all other crops do not apply more than 9 times per growing season.

VEGETABLES	INSECTS CONTROLLED	PHI*
Broccoli, Brussels sprouts, Cabbage, Cavalo broccoli, Cauliflower, Chinese broccoli, Chinese cabbage, Chinese mustard, Kohlrabi	Alfalfa looper, Aphid, Armyworm, Beet armyworm, Cabbage looper, Cabbage webworm, Corn earworm, Cutworm, Diamondback moth, Fall armyworm, Flea beetle, Grasshopper, Imported cabbageworm, Japanese beetle (adult), Leafhopper, Lygus bug, Meadow spittlebug, Plant bug, Southern cabbageworm, Spider mite, Stink bug, Thrips, Yellow-striped armyworm, Whitefly	1
Corn (sweet & pop)	Armyworm, Bean leaf beetle, Beet armyworm, Cereal leaf beetle, Chinch bug, Corn earworm, Corn leaf aphid, Cutworm, English grain aphid, European corn borer, Grasshopper, Green bug, Green cloverworm, Hop vine	21

VEGETABLES Cont.

VEGETABLES	INSECTS CONTROLLED	PHI*
	borer, Japanese beetle (adult), Meadow spittlebug, Mexican corn rootworm beetle (adult), Northern corn rootworm beetle (adult), Sap beetle (adult), Southern corn rootworm beetle (adult), Southwestern corn borer, Stalk borer, Stink bug, Tobacco budworm, Western bean cutworm, Western corn rootworm beetle (adult)	
Corn (sweet only)	Aphid, Aster leafhopper, Corn silkfly (adult), Southern armyworm, Spider mite, Tarnished plant bug, Western bean cutworm	21
Lettuce (head & leaf)	Aphid, Alfalfa looper, Armyworm, Beet armyworm, Cabbage looper, Corn earworm, Cutworm, Diamondback moth, European corn borer, Fall armyworm, Flea beetle, Grasshopper, Green cloverworm, Imported cabbageworm, Japanese beetle (adult), Leafhopper, Meadow spittlebug, Plant bug, Saltmarsh caterpillar, Southern armyworm, Spider mite, Stink bug, Tobacco budworm, Vegetable beetle (adult), Whitefly	1
Onion (bulb) & Garlic	Aphid, Armyworm, Cutworm, Flower thrips, Leafminer (adult), Onion maggot (adult), Onion thrips, Plant Bug, Seedcorn maggot (adult), Stink bug, Tobacco thrips, Western flower thrips	14
Tomato & Tomatillo	Aphid, Beet armyworm, Cabbage looper, Colorado potato beetle, Cutworm spp., European corn borer, Fall armyworm, Flea beetle, Grasshopper, Hornworm, Leafhopper, Leafminer, Meadow spittlebug, Plant bug, Southern armyworm, Stink bug, Tobacco budworm, Tomato fruitworm, Tomato pinworm, Yellow-striped armyworm, Whitefly	5
*PHI = Pre-Harvest Interval. Number of days to wait between the last application and harvest.		

STORAGE & DISPOSAL

Pesticide Storage: Store and transport in upright position. Store only in original container, in a cool dry place inaccessible to children or pets. **Pesticide Disposal:** *If partly filled* - Call your local solid waste agency for disposal instructions. Never place unused product down any indoor or outdoor drain. **Container Disposal:** *If empty* - Non-refillable container. Do not reuse or refill this container. Offer for recycling, if available.

FIRST AID

If on skin or clothing:	Take off contaminated clothing. Rinse skin immediately with plenty of water for 15-20 minutes. Call a poison control center or doctor for treatment advice.
--------------------------------	---

Have the product container or label with you when calling a poison control center or doctor for treatment advice. You may also contact the National Pesticide Information Center at 1-800-858-7378 for emergency medical treatment information.

PRECAUTIONARY STATEMENTS

Hazards to Humans and Domestic Animals

CAUTION: Harmful if absorbed through skin. Avoid contact with skin, eyes or clothing. Wash hands thoroughly with soap and water after handling and before eating, drinking, chewing gum, or using tobacco.

Environmental Hazards

This product is extremely toxic to fish and other aquatic organisms. To protect the environment, do not allow pesticide to enter or run off into storm drains, drainage ditches, gutters or surface waters. Applying this product in calm weather when rain is not predicted for the next 24 hours will help to ensure that wind or rain does not blow or wash pesticide off the treatment area.

This product is highly toxic to bees exposed to direct treatment or residues on blooming crops or weeds. Do not apply this product or allow it to drift to blooming crops or weeds if bees are visiting the treatment area.

Seller warrants that this product complies with the specifications expressed in this label. To the extent consistent with applicable law, Seller makes no other warranties, and disclaims all other warranties, express or implied, including but not limited to warranties of merchantability and fitness for the intended purpose. To the extent consistent with applicable law, Seller's liability or default, breach or failure under this label shall be limited to the amount of the purchase price. To the extent consistent with applicable law, Seller shall have no liability for consequential damages.

For information on pesticide products (including health concerns, medical emergencies, or pesticide incidents) call National Pesticide Information Center at 1-800-858-7378.