



## Horizontal Mount, Integral Vacuator™ Valve

### Severe Duty, Two-Stage Filtration for Large Construction & Mining Machines

#### Applications

- Allows up to 1200 cfm airflow throughput per air cleaner
- Horizontal installation
- Designed for large industrial and construction machines — crawler tractors, crane loaders, excavators, and air compressors with large engines operating in severe dust environments

#### Air Cleaner Features

- Unique, flared inlet allows maximum airflow with low restriction
- 21" body diameters
- Two-stage air cleaning deals with very dusty environment:
  - (1) Built-in louver spins air to separate up to 85% of incoming dust before it reaches the filter
  - (2) Primary filter removes up to 99.99% of the remaining dust
- Built-in Vacuator™ Valve collects and releases pre-cleaned dust
- Safety filter on all models protects engine inlet during primary filter change out
- Housing is metal and coated with a corrosion and chemical resistant polymer paint

#### Filter Features

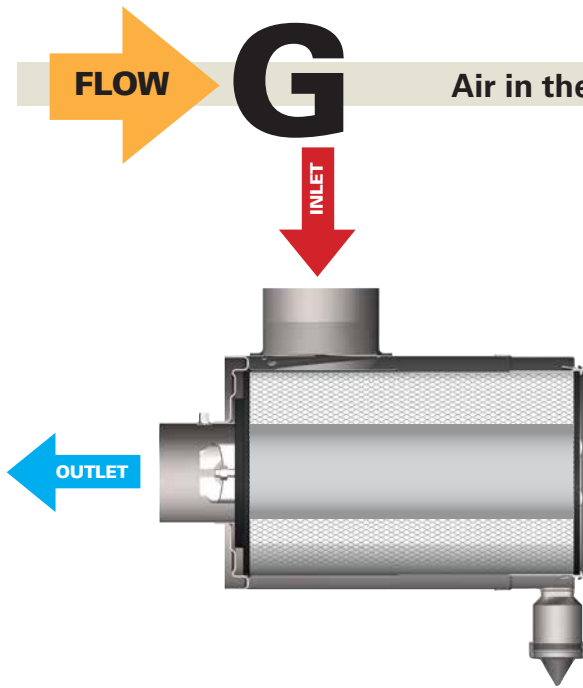
- Replacement filter choices include an extended service, high efficiency filter for restriction maintenance, or a standard life filter for scheduled maintenance

#### Accessories

- See the Accessories section for details on Donaldson air intake add-ons that can enhance the performance of your system
- Each FVG is tapped to accept a filter service indicator
- Order mounting bands, hoods, and other accessories separately



FVG air cleaners are used in tandem on this underground mining equipment to double the airflow throughput to the engine.



**Air in the Side, Out the End** (standard flow filters)

### When Selecting an Air Cleaner . . .

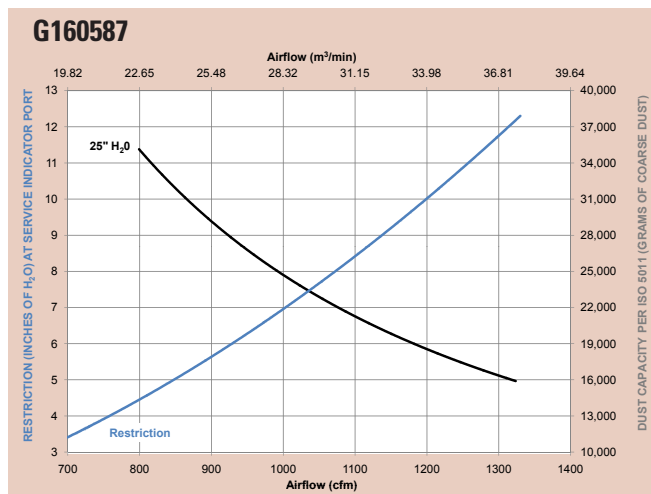
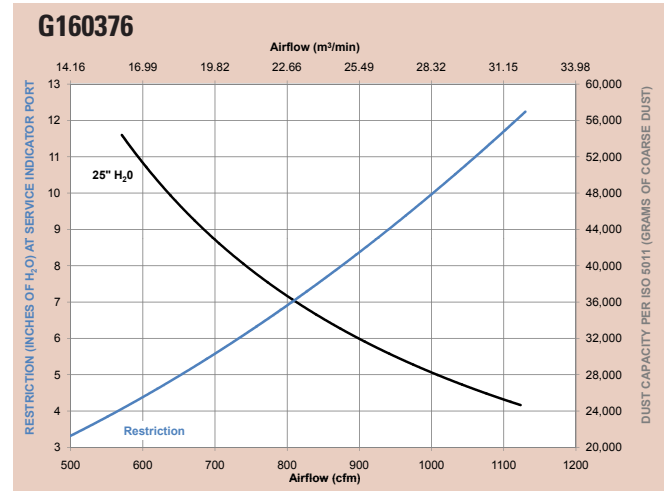
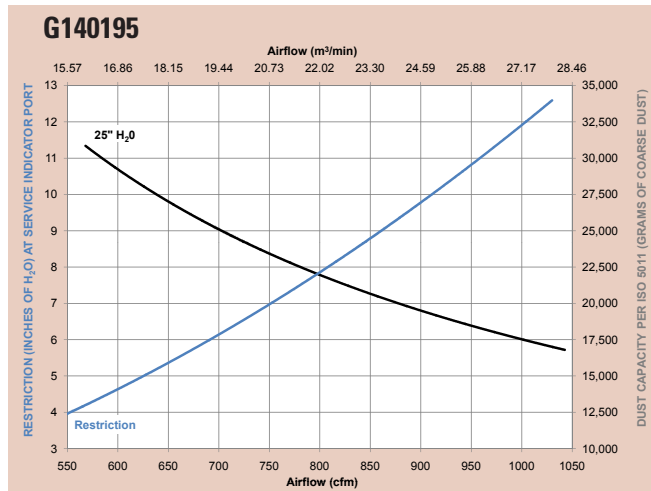
Determine the airflow requirements of your engine, then find the corresponding cfm airflow in the table below. The restriction numbers (shown in inches of water) indicate the approximate initial restriction of each model air cleaner at that cfm. If there are two air cleaner models that fit your parameters, choosing the one with the lower restriction will provide longer filter service life. When calculating total initial restriction of the entire air intake system, include the restriction caused by ducting, elbows, and pre-cleaners. See pages 257-258 for ducting restriction estimates.

#### Initial Airflow Restriction

CFM @ "H <sub>2</sub> O			Air Cleaner Model
6"	8"	10"	
690	810	910	G140195
730	880	1000	G160376
930	1070	1200	G160587

Looking for a different air cleaner with newer Donaldson technologies? Check out the FRG Air Cleaners. This line has models that cover this airflow range.

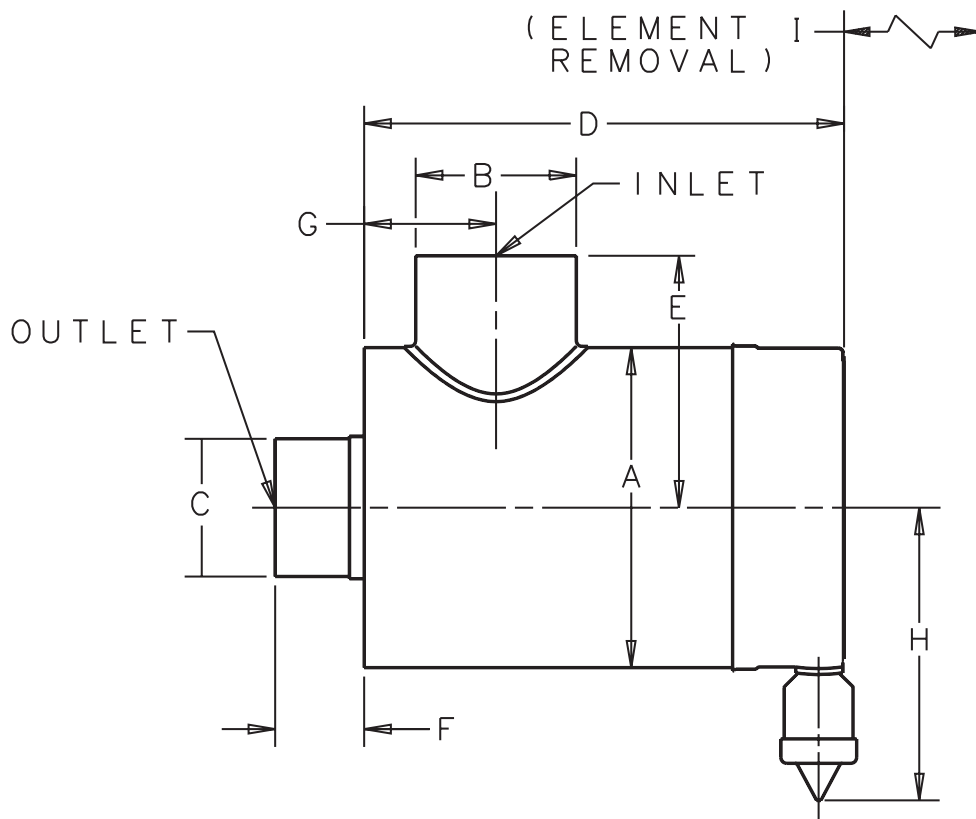
### FVG Air Cleaner Performance Curves (Restriction & Dust Capacity)\*



\*Results generated using laboratory testing pursuant to ISO5011. Actual performance during use may vary depending on multiple factors, including specific product configuration, external conditions and application.



## FVG Cycloflow™ Specification Illustration

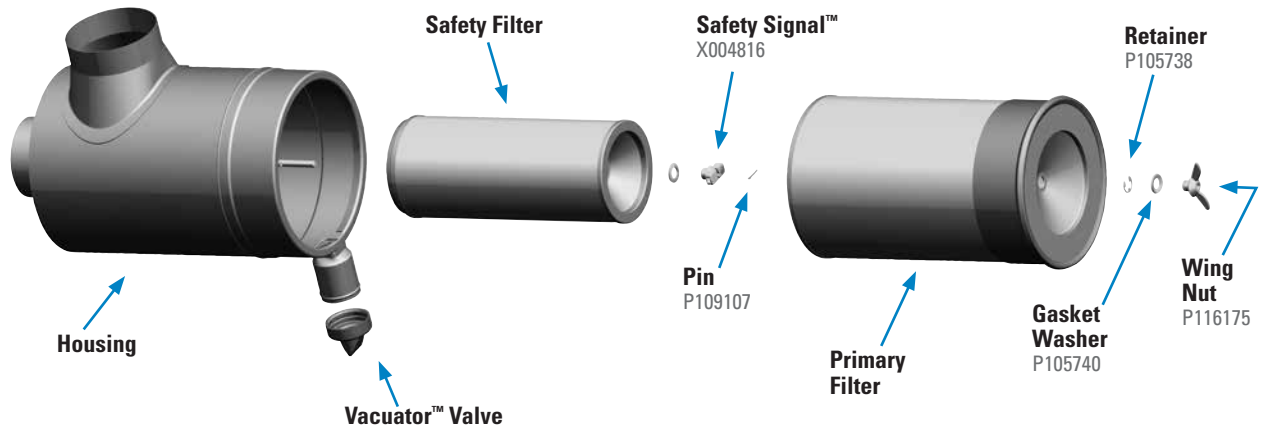


### FVG Specifications

Air Cleaner Models	Body Diameter (A)		Inlet Diameter (B)		Outlet Diameter (C)		Length (D)		Inlet Length (E)		Inlet Length (F)		Inlet Length (G)		Service Clearance (H)		Service Clearance (I)		Weight	
	in	mm	in	mm	in	mm	in	mm	in	mm	in	mm	in	mm	in	mm	in	mm	lbs	kg
G140195	13.95	354	7.00	178	6.00	152	20.87	530	10.98	279	3.88	99	5.75	146	12.71	323	20.72	526	48	22
G160376	16.00	406	7.00	178	7.00	178	20.87	530	13.00	330	3.88	99	5.28	134	13.80	351	20.72	526	62	28
G160587	16.00	406	7.00	178	7.00	178	24.87	632	13.00	330	3.88	99	5.75	146	13.80	351	24.50	622	66	30

For FVG air cleaner service servicing information see page 142.

## FVG Exploded View



## FVG Service Parts & Accessories

### G140195 FVG

Elbow, 45° .....	P105547
Elbow, 90° .....	P105535
Filter, primary .....	P182043 .....3
Filter, primary-Donaldson Blue® .....	DBA5043
Filter, primary - SM .....	P181043
Filter, safety .....	P124860
Gasket washer .....	P105740
Hump hose .....	P105612
Informer™ indicator 25" H <sub>2</sub> O .....	X002277
Inlet hood, metal .....	H000339
Inlet hood, plastic .....	H000607
Mounting bands, metal .....	H000350 .....2
Outlet band clamp .....	P148347
Pin .....	P109107
Retainer .....	P105738
SafetySignal indicator .....	X004816
Vacuator™ Valve .....	P103198
Wing nut .....	P116175

### G160376 FVG

Elbow, 45° .....	P105548
Elbow, 90° .....	P105536
Filter, primary .....	P124867
Filter, safety .....	P124866
Gasket washer .....	P105740
Hump hose .....	P105613
Informer™ indicator 25" H <sub>2</sub> O .....	X002277
Inlet hood, metal .....	H000339
Inlet hood, plastic .....	H000607
Mounting bands, metal .....	H000351 .....2
Outlet band clamp .....	P148348
Pin .....	P109107
Retainer .....	P105738
SafetySignal indicator .....	X004816
Vacuator™ Valve .....	P103198
Wing nut .....	P116175

### G160587 FVG

Elbow, 45° .....	P105548
Elbow, 90° .....	P105536
Filter, primary .....	P182049 .....3
Filter, primary-Donaldson Blue® .....	DBA5049
Filter, primary - SM .....	P181049
Filter, safety .....	P116446
Gasket washer .....	P105740
Hump hose .....	P105613
Informer™ indicator 25" H <sub>2</sub> O .....	X002277
Inlet hood, metal .....	H000339
Inlet hood, plastic .....	H000607
Mounting bands, metal .....	H000351 .....2
Outlet band clamp .....	P148348
Pin .....	P109107
Retainer .....	P105738
Vacuator™ Valve .....	P105220
Wing nut .....	P116175

### NOTES:

- 2 = Two required for proper installation
- 3 = Shipped with air cleaner initially

SM=Scheduled Maintenance

Donaldson Blue® = High Efficiency,  
Extended Service

Even More

# Donaldson Delivers Innovative Filtration Solutions for Engines, Equipment and the People Who Use Them

## Fuel Filtration

Expanded line of fuel filters protect engine components and extend equipment life.

- Donaldson Blue® Fuel filters with Synteq XP™ nanofiber media deliver the cleanest fuel — providing better protection for your injectors.
- Includes a full complement of filters to fit Stanadyne® and Racor® fuel systems, and Cummins® engines.



Stanadyne® is a registered trademark of Stanadyne Corporation. Racor® is a registered trademark of Parker Hannifin Corporation. Cummins® is a registered trademark of Cummins Inc.

## Lube Filtration

Donaldson lube filters keep engine oil clean by capturing contaminants that can cause engine damage.

- With coverage for a full range of popular engines, Donaldson lube filters meet or exceed application requirements.
- Donaldson Blue® lube filters — with Synteq™ media — deliver improved lubricant flow, improved cold start performance and a higher level of engine protection to prolong engine and equipment life.



## Mufflers & Exhaust Accessories

- For more than 60 years, Donaldson has been a leading supplier of exhaust systems, components and accessories for medium- and heavy-duty diesel powered trucks and equipment.



## Hydraulic and Transmission Filtration

- Offering a broad line of spin-on, cartridge-style and in-tank hydraulic filters — including high, medium and low pressure options — that protect transmissions, machinery and components in hundreds of applications.
- A complete line of hydraulic accessories to accommodate virtually any mobile application.
- T.R.A.P.™ breather technology
- Donaldson Duramax® filters are the highest rated medium pressure filters available.



## Coolant Filtration

- Donaldson coolant filters remove contaminants and maintain cooling system balance — keeping today's hot-running engines cool and reducing downtime.
- Donaldson Blue® coolant filters allow you to extend filter life while maintaining coolant condition.

